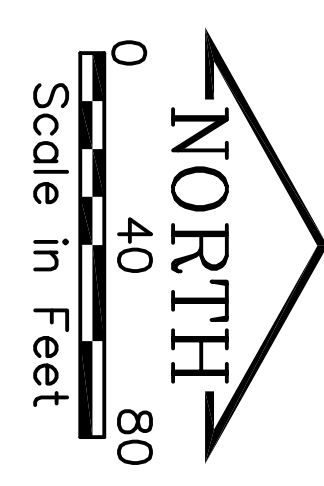
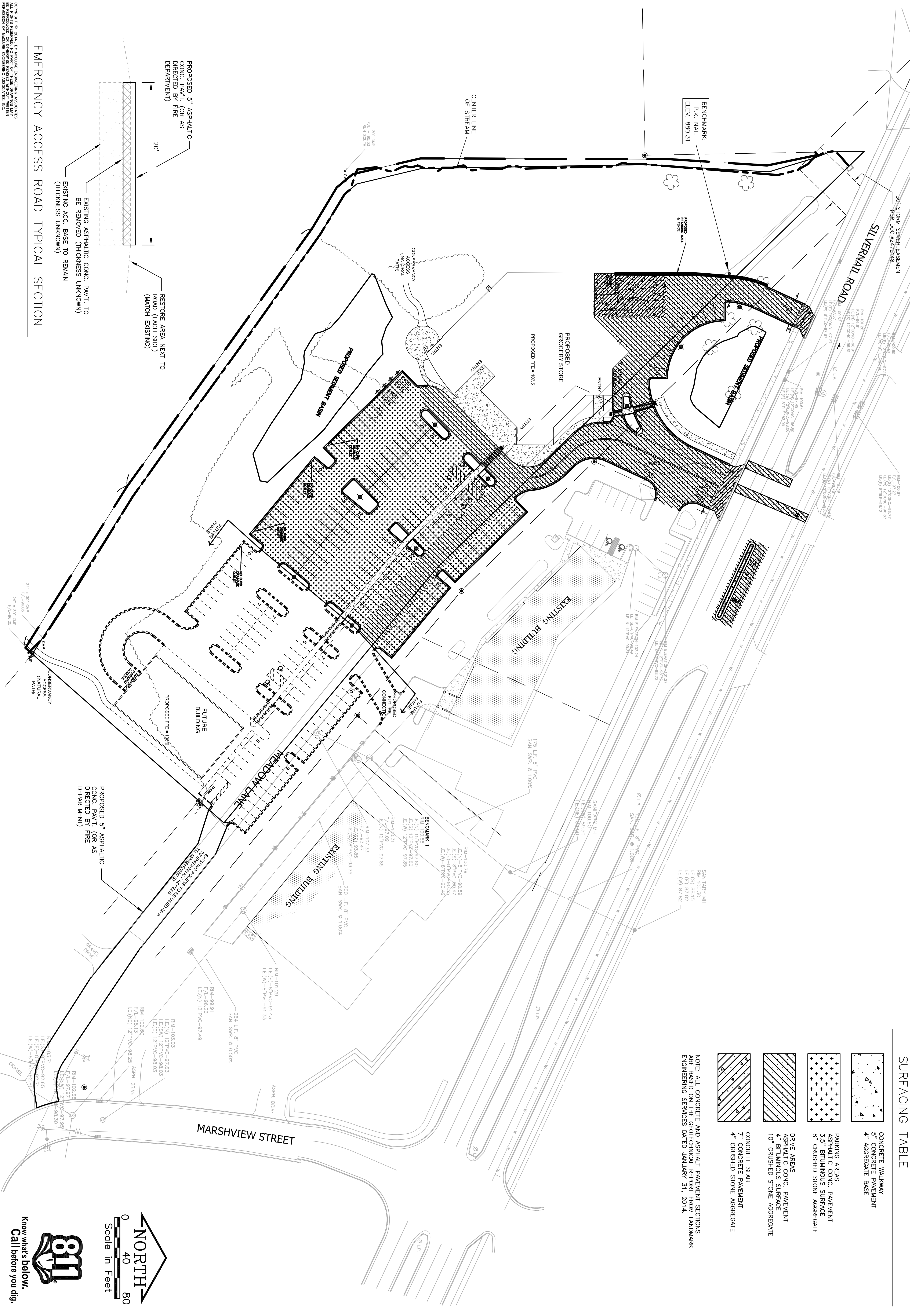


SURFACING TABLE

	CONCRETE WALKWAY
	5" CONCRETE PAVEMENT
	4" AGGREGATE BASE
	PARKING AREAS
	ASPHALTIC CONC. PAVEMENT
	4" BITUMINOUS SURFACE
	8" CRUSHED STONE AGGREGATE
	DRIVE AREAS
	ASPHALTIC CONC. PAVEMENT
	4" BITUMINOUS SURFACE
	10" CRUSHED STONE AGGREGATE
	CONCRETE SLAB
	7" CONCRETE PAVEMENT
	4" CRUSHED STONE AGGREGATE

NOTE: ALL CONCRETE AND ASPHALT PAVEMENT SECTIONS ARE BASED ON THE GEOTECHNICAL REPORT FROM LANDMARK ENGINEERING SERVICES DATED JANUARY 31, 2014.



811
Know what's below.
Call before you dig.

EMERGENCY ACCESS ROAD TYPICAL SECTION
EXISTING ASPHALTIC CONC. PAVT. TO BE REMOVED (THICKNESS UNKNOWN)
PROPOSED 5" ASPHALTIC CONC. PAVT. (OR AS DIRECTED BY FIRE DEPARTMENT)

6600 SHEET NO.	REVISIONS NO. ITEM DATE	PLOTTING SCALE: 1" = 40' DESIGNED BY: KCH DRAWN BY: JBB CHECKED BY: KCH DATE: MAY 28, 2014	 McClure Engineering Associates, Inc. 5417 North 118th Court Milwaukee, Wisconsin 53225 (414) 616-4880 FAX (414) 616-4885	PAVING PLAN GOOD HARVEST MARKET II, LLC 1850 MEADOW LANE 262-544-9380 WAUKESHA, WI.	FILE NAME: W:\USERS\jheff\goodharvest\13025 E8.dwg JOB NUMBER: 08-15-13-025
	08-15-13-025				