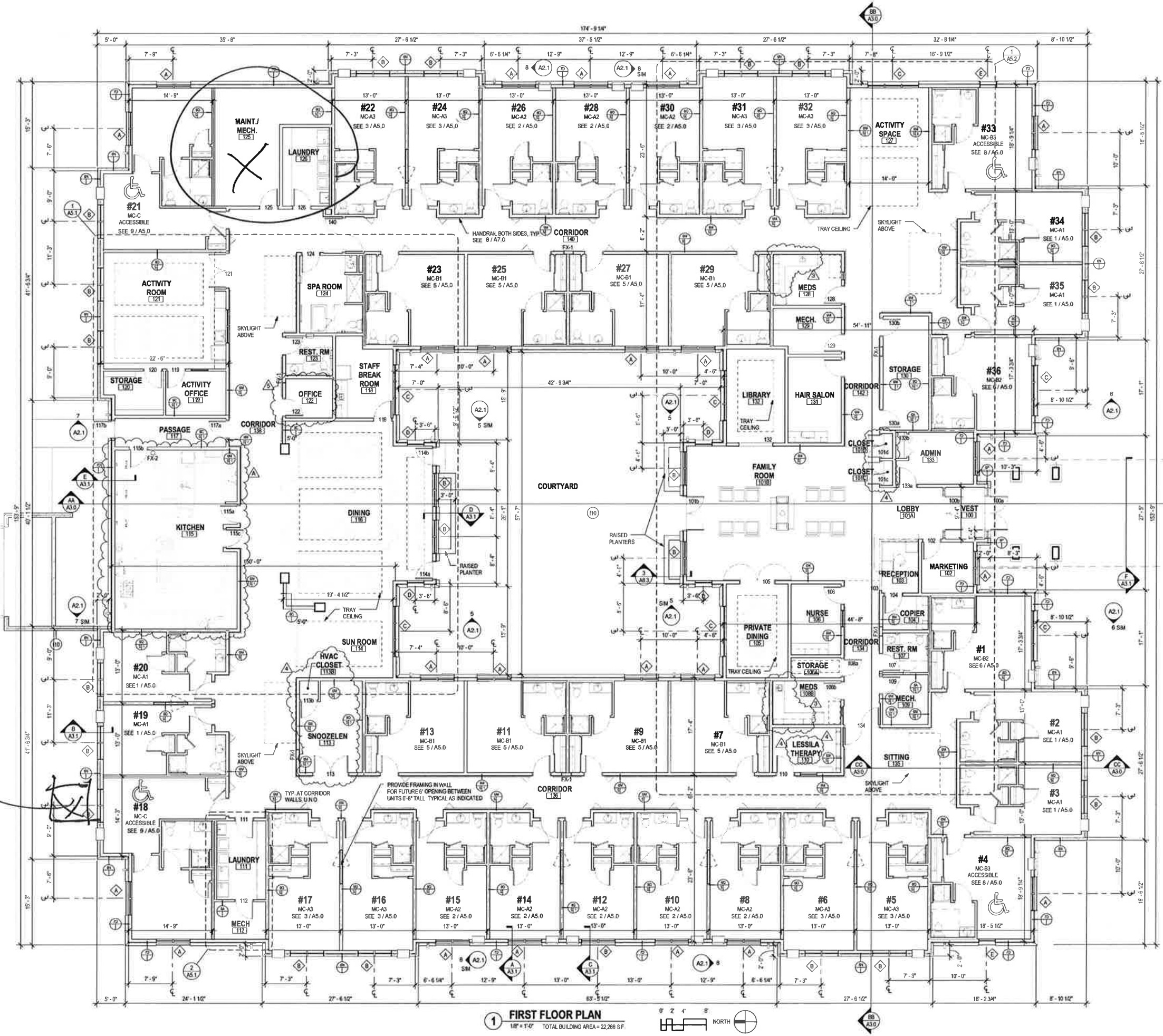


- ### FLOOR PLAN GENERAL NOTES
- A. SEE SHEET A5.0 - A5.2 FOR LARGE SCALE PLANS REFER TO LARGE SCALE PLANS FOR ADDITIONAL WALL TYPES, DIMENSIONS, DOOR NUMBERS AND INTERIOR ELEVATION DESIGNATIONS
 - B. SEE SHEET A7.0 FOR INTERIOR ELEVATIONS, ACCESSIBLE MOUNTING AND CLEARANCE INFORMATION
 - C. COORDINATE SIZE AND LOCATIONS OF ALL MECHANICAL/ELECTRICAL/PLUMBING EQUIPMENT AND REQUIRED OPENINGS. VERIFY SIZE/PROFILE/LOCATION WITH PLUMBER/MECHANICAL/ELECTRICAL
 - D. GENERAL CONTRACTOR TO PROVIDE CONCRETE EQUIPMENT PADS/CURBS AS REQUIRED FOR MECHANICAL/ELECTRICAL EQUIPMENT. VERIFY SIZE/PROFILE/LOCATION WITH PLUMBER/MECHANICAL/ELECTRICAL
 - E. GENERAL CONTRACTOR TO INSTALL FOAM FILLER AT ALL MASONRY WALL CONTROL/EXPANSION JOINTS AND SEAL BOTH SIDES (WALL REINFORCING TO DISCONTINUE AT JOINTS). SEE DETAIL 10 / A8.2
 - F. GENERAL CONTRACTOR TO PROVIDE WOOD BLOCKING BETWEEN WOOD STUDS AS REQUIRED FOR CASEWORK/HANDRAIL/TOILET ACCESSORIES ETC. MOUNTING
 - G. PROVIDE VINYL CARPET EDGE AT ALL CARPET TO DISSIMILAR FLOOR MATERIALS UNLESS NOTED OTHERWISE (UN O).
 - H. REFER TO EXTERIOR ELEVATIONS FOR EXTERIOR WALL CONTROL JOINTS
 - I. ADA CLEARANCE CIRCLES AND BOXES SHOWN ON PLAN ARE FOR INFORMATION PURPOSES ONLY
 - J. EXTERIOR OVERALL DIMENSIONS ARE TO FACE OF FOUNDATION UNLESS NOTED OTHERWISE. PARTITION DIMENSIONS ARE FROM FACE OF STUD TO FACE OF STUD UNLESS NOTED OTHERWISE
 - K. LOCATE DOORS WITHIN WALLS CENTERED ON WALL, HALL, CLOSET OR 4' FROM ADJACENT WALL UNLESS DIMENSIONED OTHERWISE
 - L. SEE DETAIL 12 / A8.2 FOR RECESSED FIRE EXTINGUISHER CABINETS AND MEMORY BOX CABINETS LOCATED IN SOUND AND FIRE WALLS
 - M. FX = FIRE EXTINGUISHER CABINETS
FX1 = 10LB ABC EXTINGUISHER IN SEMI RECESSED CABINET
FX2 = 5LB TYPE K EXTINGUISHER WITH WALL MOUNTING BRACKET
 - N. ACCESSIBLE DWELLING UNITS ARE DESIGNED TO COMPLY WITH THE REQUIREMENTS OF 2003 ICC/ANSI 117.1 REQUIREMENTS FOR FULL ACCESSIBILITY AS REQUIRED FOR INSTITUTIONAL OCCUPANCIES
 - O. ALL OTHER UNITS NOT INDICATED AS FULLY ACCESSIBLE ARE "TYPE B" UNITS. REFER TO ENLARGED PLANS FOR INFORMATION AND REFERENCES TO TYPE B ACCESSIBLE CRITERIA
 - P. REFER TO 11 / A8.2 FOR TYPICAL FIRE RATED COLUMN DETAIL AT ALL STEEL COLUMNS. SIMILAR CONDITION AT STEEL COLUMNS WITHIN EXTERIOR WALLS

6515 Grand Teton Plaza, Suite 120
Madison, Wisconsin 53719
608.829.4444 608.829.4445
dimensionmadison.com

**MSP - WAUKESHA
MEMORY CARE**

1831 Meadow Lane,
Waukesha, WI



1 FIRST FLOOR PLAN
1/8" = 1'-0" TOTAL BUILDING AREA = 22,286 SF

ORIGINAL TRANSFORMED LOCATION w/ LANDSCAPE PLAN

DATE OF ISSUE: 08/16/2013

REVISIONS:

1	Addendum A	9/18/2013
2	CB#3	1/9/2014
3	CB#4	1/31/2014
4	CB#5	4/30/2014

PROJECT # 11102

FIRST FLOOR PLAN

A1.1R