

Waukesha City Hall Waukesha, WI

BWB R

1241 John Q Hammons Dr., Ste. 503 Madison, WI 53717 608.829.3701 bwbr.com

Consultants

This document may be an electronic file or may be printed from an electronic file provided to the user. It is the sole responsibility of the user to ensure that the content and quality is consistent with the content and quality of the original documents on file at BWBR.

Issued For

Item Date

This Sheet may be a Reduced Copy

The bar above is 1" long on a Full Size Sheet. Drawing Scales apply to Full Size Sheets.

Keyplan

ZONE 1 (WEST)

ZONE 2 (EAST)

ZONE 3 (SKYWAY)

ZONE 4 (EXISTING PARKING GARAGE)

Comm. No. 3.2018006.00

Drawn PH, AS

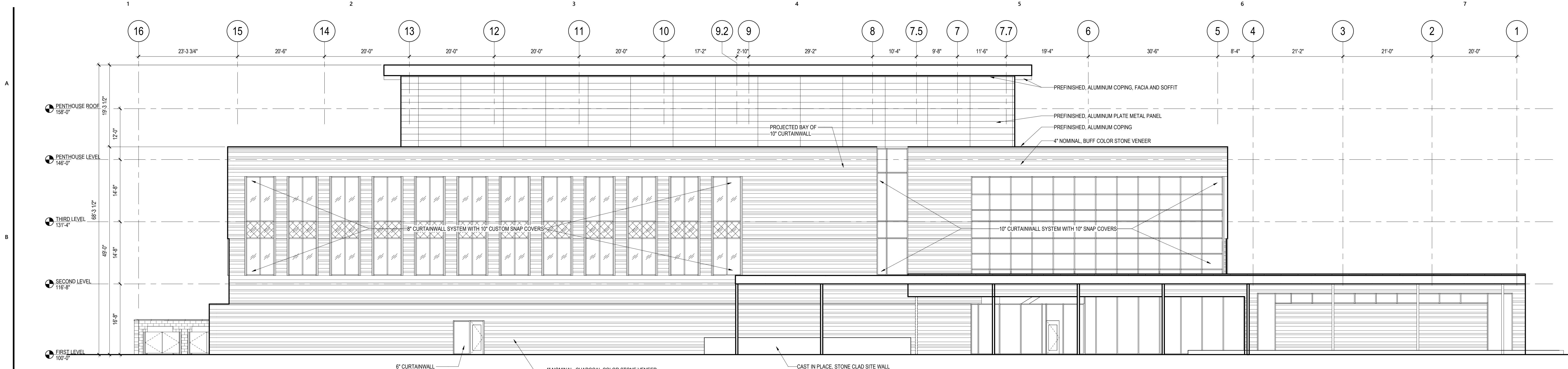
Sheet Title

EXTERIOR ELEVATIONS - CITY HALL

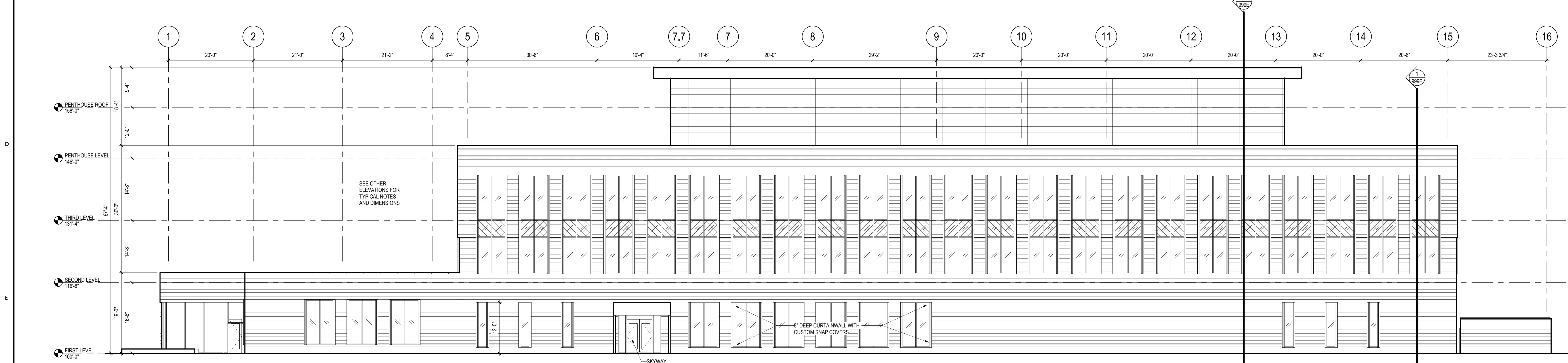
Sheet No.

510

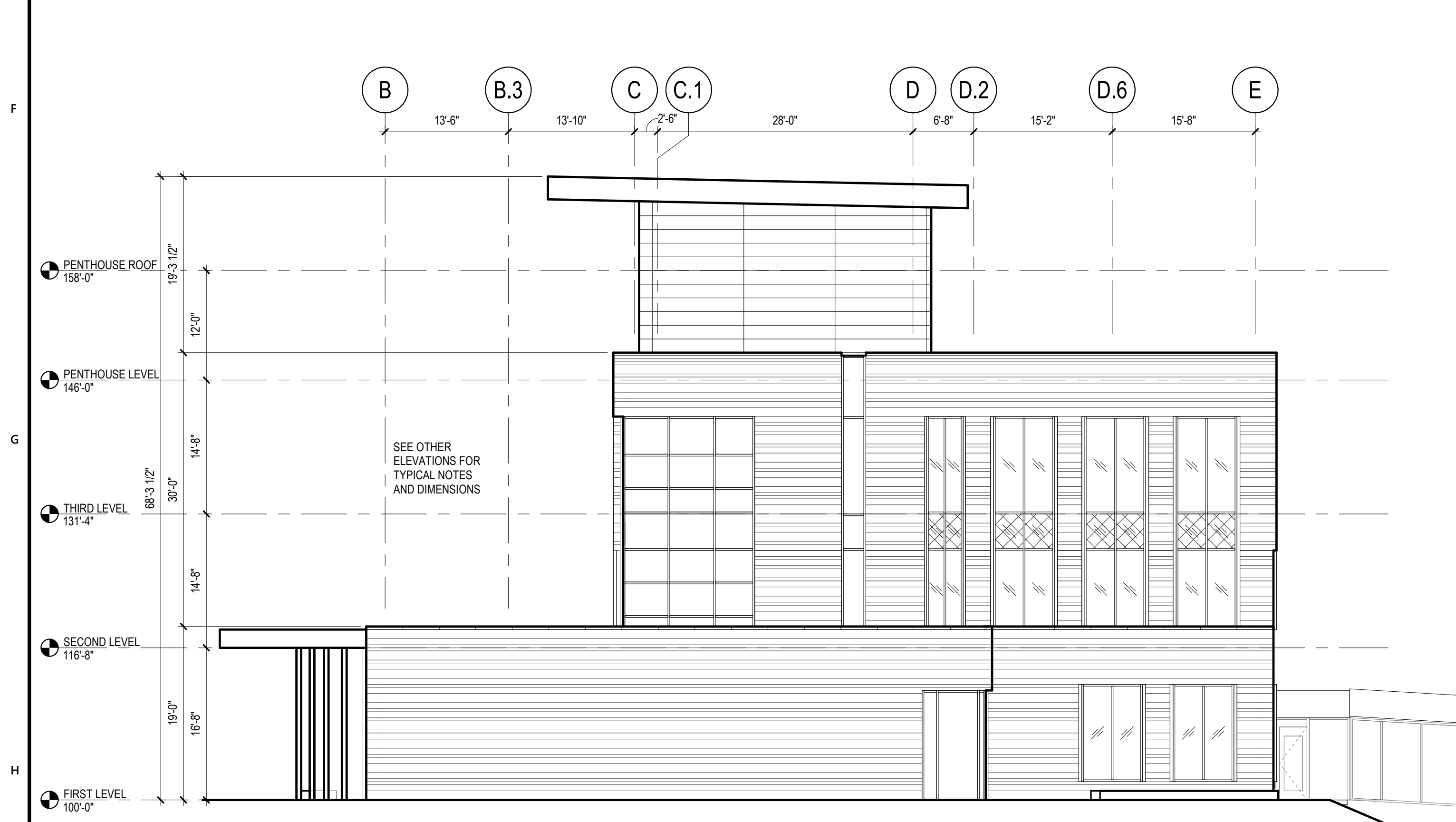
Copyright, BWBR



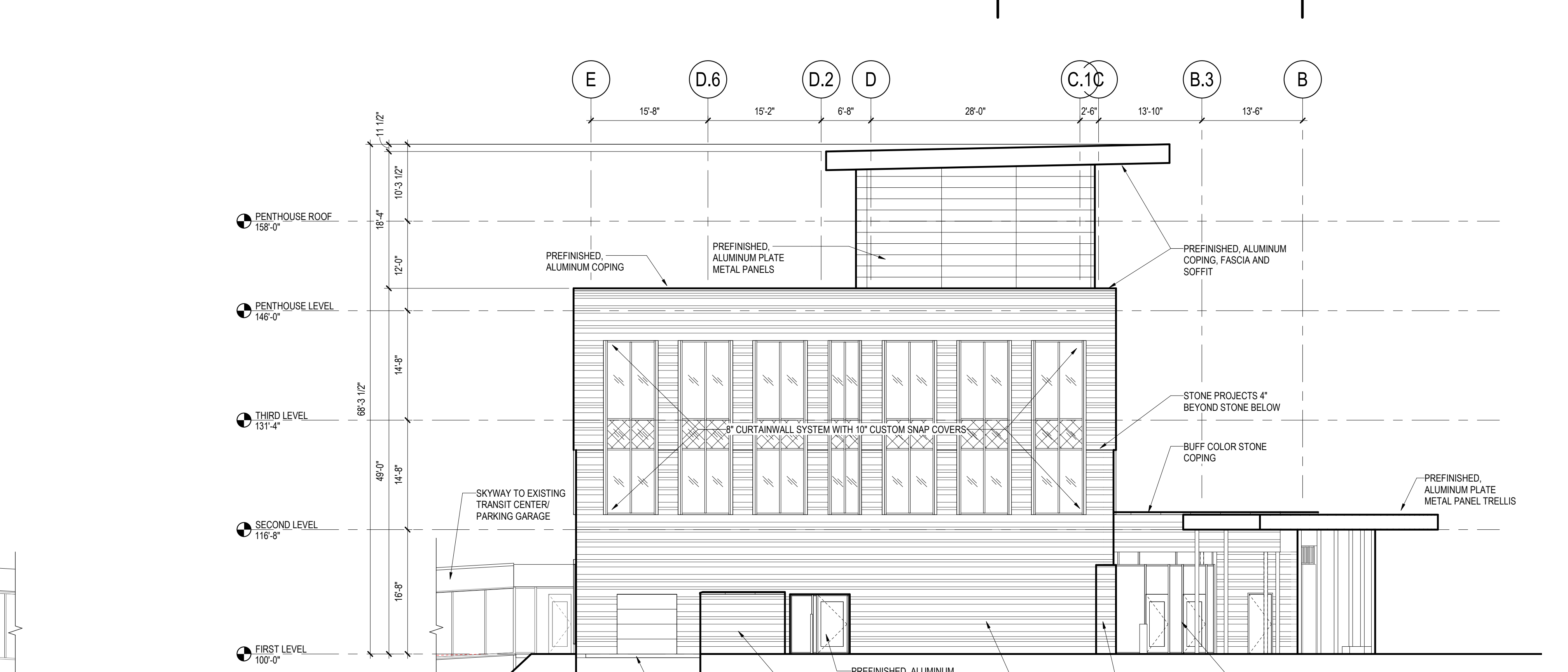
1C EXTERIOR ELEVATION - NORTH
510 1" = 10'-0"



1E EXTERIOR ELEVATION - SOUTH
510 1" = 10'-0"



1H EXTERIOR ELEVATION - WEST
510 1" = 10'-0"



1A EXTERIOR ELEVATION - EAST
510 1" = 10'-0"

2/14/2019 3:31:28 PM