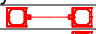



Luminaire Schedule						
Symbol	Qty	Label	Arrangement	Total Lamp Lumens	LLF	Description
	2	KT-ALED140-M2-OSA-NM-850-VDIM_1	Back-Back	19565	0.900	B2B Area Light 140w 5000k Type 5
	6	KT-ALED140-M2-OSA-NM-850-VDIM	Single	19905.3	0.900	Single Area Light 140w 5000k Type 3

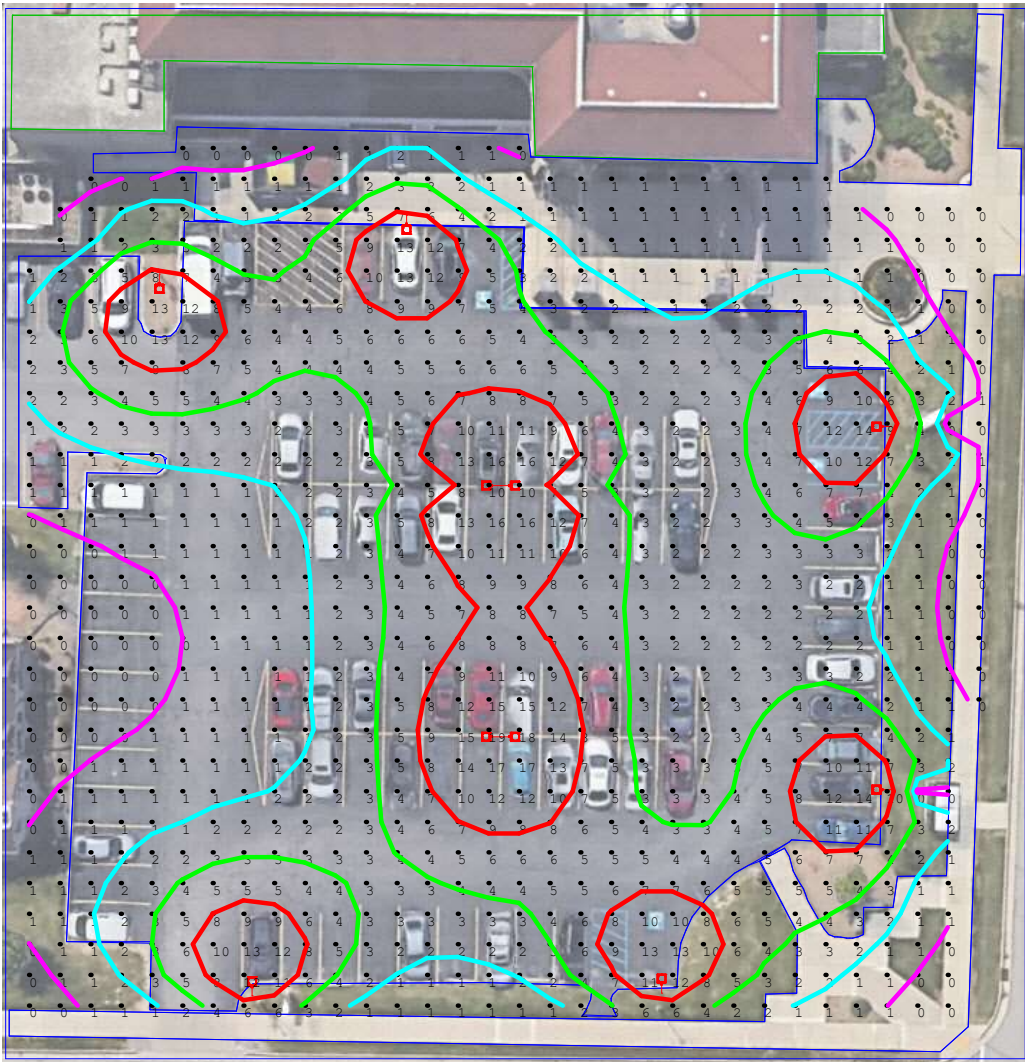
Calculation Summary								
Label	CalcType	Units	Avg	Max	Min	Avg/Min	Max/Min	Workplane Height
CalcPts_1	Illuminance	Fc	3.61	19	0	N.A.	N.A.	0

Luminaire Location Summary						
LumNo	Label	X	Y	Mount Height	Orient	Tilt
1	KT-ALED140-M2-OSA-NM-850-VDIM	203.3	145.5	15	180	15
2	KT-ALED140-M2-OSA-NM-850-VDIM	203.3	62.5	15	180	15
3	KT-ALED140-M2-OSA-NM-850-VDIM	150.9	16	15	90	15
4	KT-ALED140-M2-OSA-NM-850-VDIM	57.3	15.4	15	90	15
5	KT-ALED140-M2-OSA-NM-850-VDIM	92.6	193.8	15	270	15
6	KT-ALED140-M2-OSA-NM-850-VDIM	36.1	180.3	15	270	15
7	KT-ALED140-M2-OSA-NM-850-VDIM_1	114.1	74.6	15	0	15
8	KT-ALED140-M2-OSA-NM-850-VDIM_1	114.1	132	15	0	15



<p>Carroll Uni Campus Center  KT-ALED140-M2-3,5  MH- 15'</p>	<p><b>Keystone Technologies Lighting Layout</b>  2750 Morris Road  Lansdale, PA 19446  Phone 1-800-464-2680  Email: <a href="mailto:LightingLayouts@keystonetech.com">LightingLayouts@keystonetech.com</a></p>
--	--





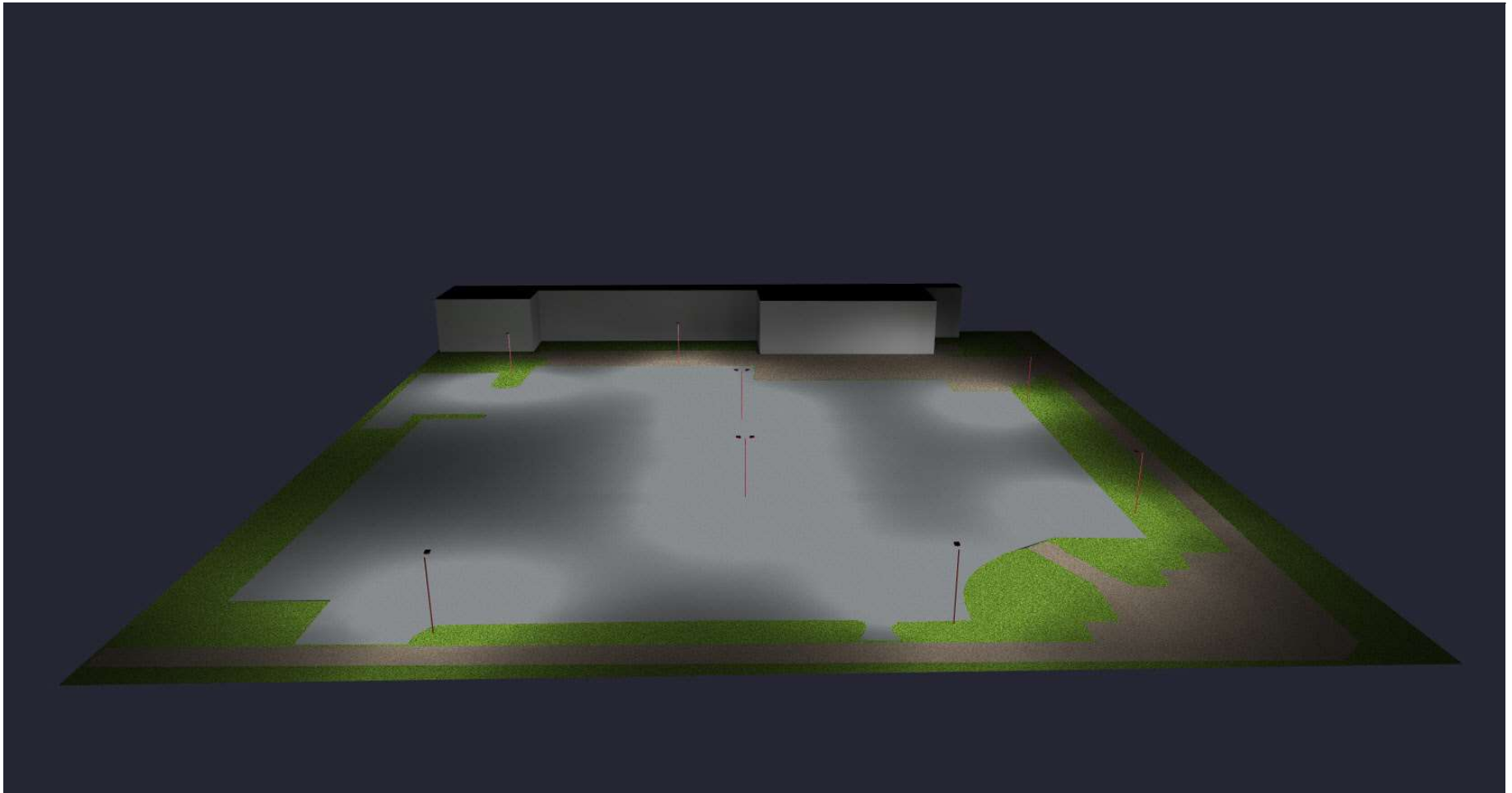
View of point by point

Carroll Uni Campus Center  
 KT-ALED140-M2-3,5  
 Red = 8+ FC's Green = 4 FC  
 Blue = 2 FC Violet = 1 FC

### Keystone Technologies Lighting Layout

2750 Morris Road  
 Lansdale, PA 19446  
 Phone 1-800-464-2680  
 Email: [LightingLayouts@keystonetech.com](mailto:LightingLayouts@keystonetech.com)



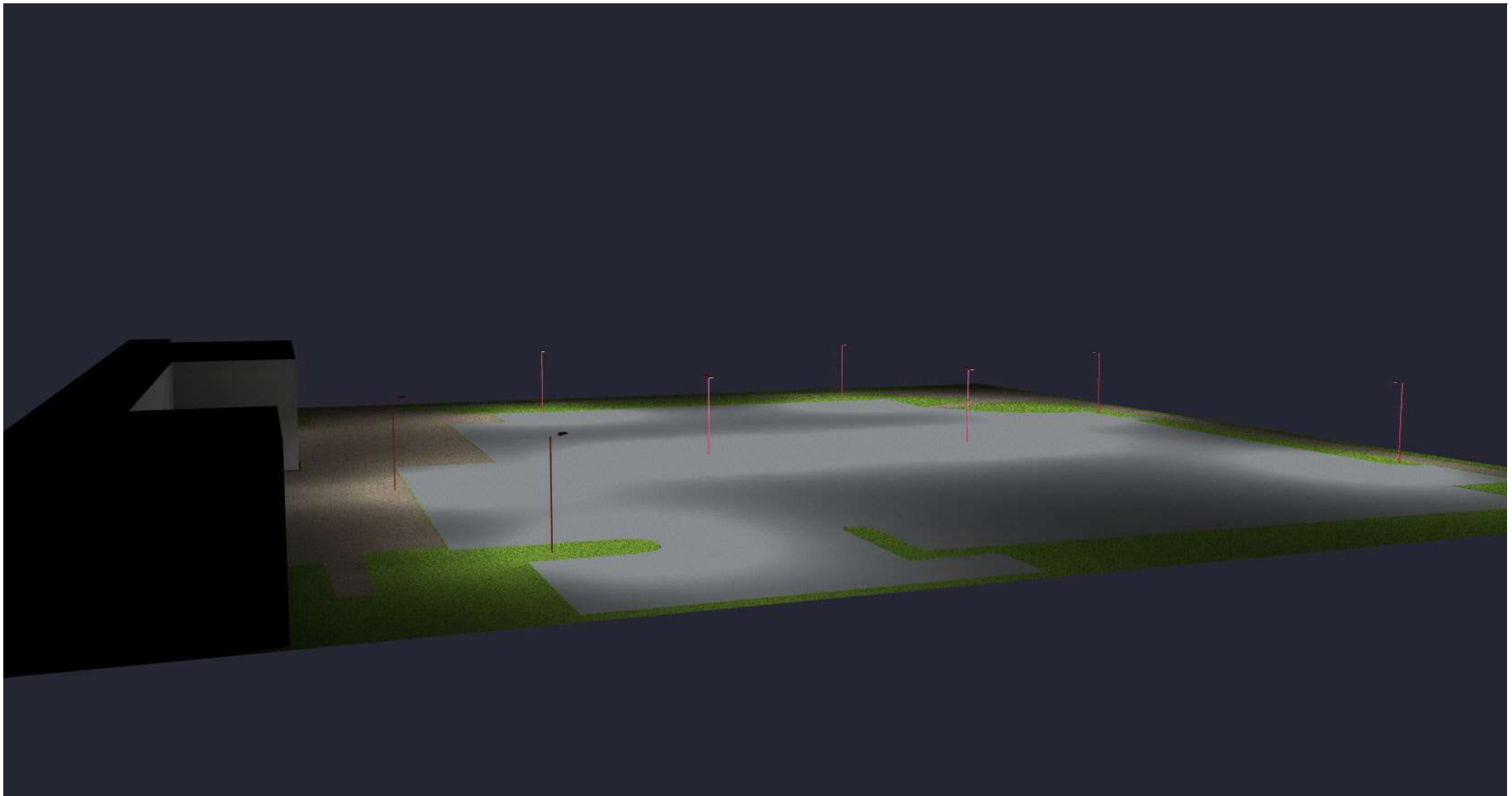


Carroll Uni Campus Center  
KT-ALED140-M2-3,5  
MH- 15'

### Keystone Technologies Lighting Layout

2750 Morris Road  
Lansdale, PA 19446  
Phone 1-800-464-2680  
Email: [LightingLayouts@keystonetech.com](mailto:LightingLayouts@keystonetech.com)



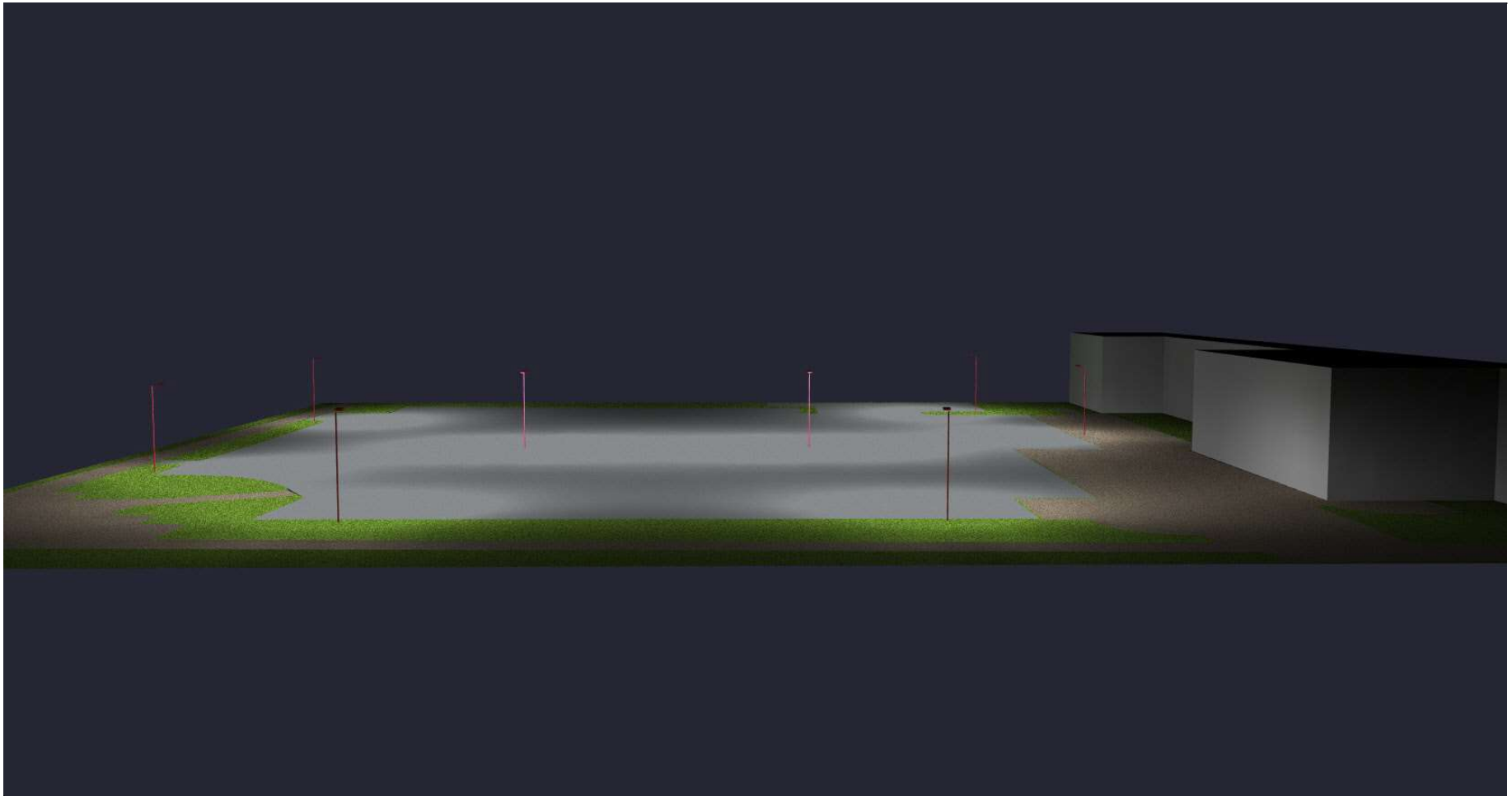


Carroll Uni Campus Center  
KT-ALED140-M2-3,5  
MH- 15'

### Keystone Technologies Lighting Layout

2750 Morris Road  
Lansdale, PA 19446  
Phone 1-800-464-2680  
Email: [LightingLayouts@keystonetech.com](mailto:LightingLayouts@keystonetech.com)





Carroll Uni Campus Center  
KT-ALED140-M2-3,5  
MH- 15'

### Keystone Technologies Lighting Layout

2750 Morris Road  
Lansdale, PA 19446  
Phone 1-800-464-2680  
Email: [LightingLayouts@keystonetech.com](mailto:LightingLayouts@keystonetech.com)



Thank you for allowing Keystone Technologies the opportunity to create and provide this Lighting Layout report.

Illumination results shown on this lighting design are based on project parametrics provided to Keystone used in conjunction with luminaire photometric testing conducted under laboratory conditions. Actual project conditions differing from these design parameters may affect field results, such as (but not limited to) windows, furnishings, floor/ceiling/wall surface texture reflectivity, site cleanliness, and lighting component tolerances. Illumination results shown have not been field verified by Keystone and therefore the actual measured results may vary from actual field conditions.

The customer is responsible for verifying dimensional accuracy along with compliance with any applicable electrical, lighting, or energy code. In no event will Keystone Technologies be held responsible for any loss resulting from any use of this lighting design.

Carroll Uni Campus Center  
KT-ALED140-M2-3,5  
MH- 15'

### Keystone Technologies Lighting Layout

2750 Morris Road  
Lansdale, PA 19446  
Phone 1-800-464-2680  
Email: [LightingLayouts@keystonetech.com](mailto:LightingLayouts@keystonetech.com)

