

FINAL ENGINEERING PLANS

FOR

McDONALD'S RESTAURANT

2340 E. MORELAND BOULEVARD
 WAUKESHA, WI
 WAUKESHA COUNTY
 SITE CODE: 048-0107

BENCHMARK / CONTROL

SOURCE: BENCHMARKS ESTABLISH VIA TRIMBLE VRS NETWORK. DATUM IS NAVD83, GROUND SCALE FACTOR: 1.0000843019

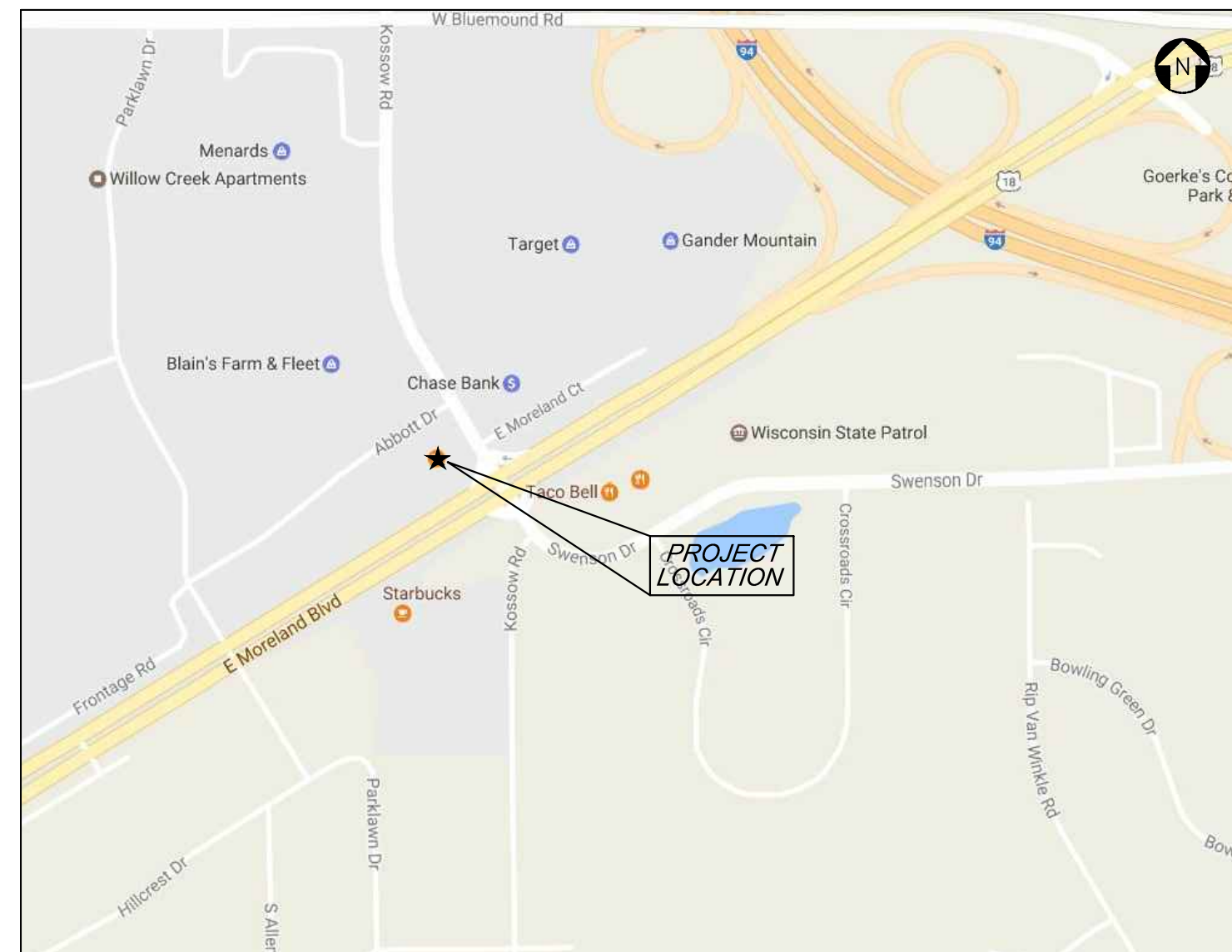
SITE:

STATION DESIGNATION: SBM #1
 ESTABLISHED BY: V3 COMPANIES
 DATE: 11/27/12

ELEVATION: 895.99 (MEASURED)
 DATUM: NAVD83
 DESCRIPTION: CUT SQUARE AT NORTHEAST CORNER OF COMED TRANSFORMER BASE AT NORTHEAST CORNER OF SITE.

STATION DESIGNATION: SBM #2
 ESTABLISHED BY: V3 COMPANIES
 DATE: 11/27/12

ELEVATION: 897.66 (MEASURED)
 DATUM: NAVD83
 DESCRIPTION: NORTHWEST FLANGE BOLT OF FIRST HYDRANT EAST OF KOSSOW RD. ON THE FRONTAGE ROAD.



LOCATION MAP
 NO SCALE

DEVELOPER

McDonald's USA, LLC
 711 Jorie Boulevard, 3rd Floor
 Oak Brook, Illinois 60523
 630 251 0445
 Contact: Dawn Bourseau

THESE PLANS AND SPECIFICATIONS ARE THE PROPERTY OF McDONALD'S CORPORATION AND SHALL NOT BE REPRODUCED WITHOUT THEIR WRITTEN PERMISSION.

INDEX OF DRAWINGS

DWG. NO.	DESCRIPTION	REVISIONS					
		1	2	3	4	5	6
C-0.0	TITLE SHEET						
C-2.0	EROSION CONTROL PLAN						
C-2.1	EROSION CONTROL DETAILS						
C-3.0	SITE PLAN						
C-3.1	LAYOUT PLAN						
C-3.2	SIGNAGE PLAN						
C-4.0	GRADING PLAN						
C-5.0	UTILITY PLAN						
C-8.0	PHOTOMETRIC PLAN						
L-1.0	LANDSCAPE PLANS						

PROJECT TEAM	ARCHITECT	McDONALD'S CORPORATION 1 McDONALD'S PLAZA OAK BROOK, ILLINOIS 60523 CONTACT: TERA O'MALLEY
	LANDSCAPE ARCHITECT	DANIEL WEINBACH & PARTNERS, LTD. 53 WEST JACKSON BOULEVARD, SUITE 250 CHICAGO, ILLINOIS 60604 312 427 2888 CONTACT: BRAD MEYERHOFF
	ENGINEER	V3 COMPANIES 7325 JANES AVENUE WOODRIDGE, ILLINOIS 60517 630 724 9200 CONTACT: ANDREW UTTAN, P.E., LEED AP
	SURVEYOR	V3 COMPANIES 7325 JANES AVENUE WOODRIDGE, ILLINOIS 60517 630 724 9200 CONTACT: CHUCK BARTOSZ, PLS
	PHOTOMETRIC DESIGN	SECURITY LIGHTING DESIGN 1085 JOHNSON DRIVE BUFFALO GROVE, ILLINOIS 60089 847 279 0627 CONTACT: MARK WERTH
UTILITIES	ELECTRIC	
	WATER & SEWER	
	GAS	
APPROVAL / REVIEW		

811 • (800) 242-8511
 www.DiggersHotline.com

PREPARED FOR: **McDonald's USA, LLC**
 These drawings and specifications are the confidential and proprietary property of McDonald's USA, LLC and shall not be copied or reproduced for use on this specific site in conjunction with its issue date and are not suitable for use on a different site or at a later time. Use of the services of properly licensed architects and engineers. Reproduction of the contract documents for reuse on another project is not authorized.

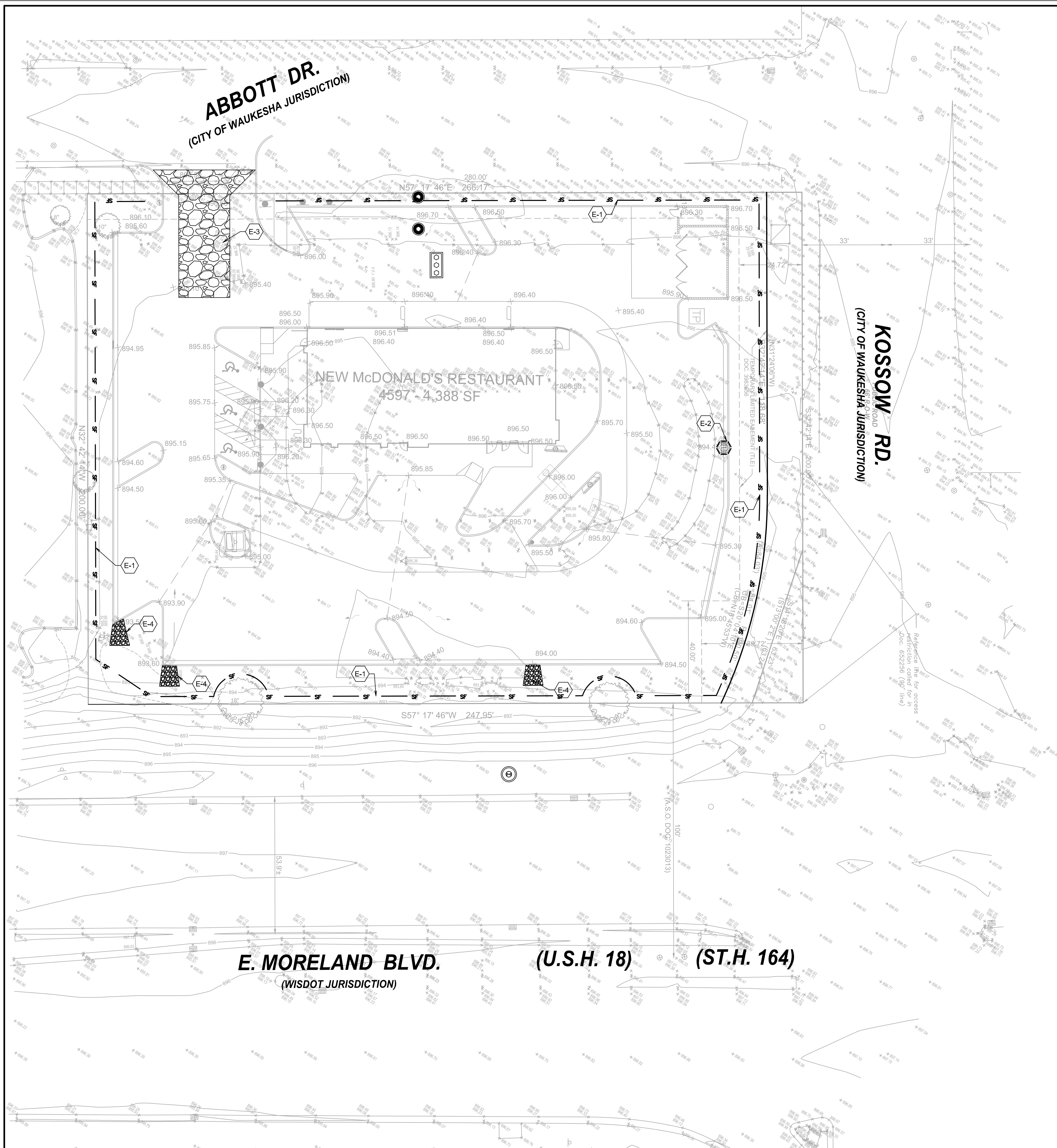
PREPARED BY: **V3 Companies**
 7325 Janes Avenue
 Woodridge, IL 60517
 630.724.9200 phone
 630.724.9202 fax
 www.v3co.com

DRAWN BY: JWB
 STD ISSUE DATE: 01-19-17
 REVIEWED BY: JWB
 DATE ISSUED: 01-19-17

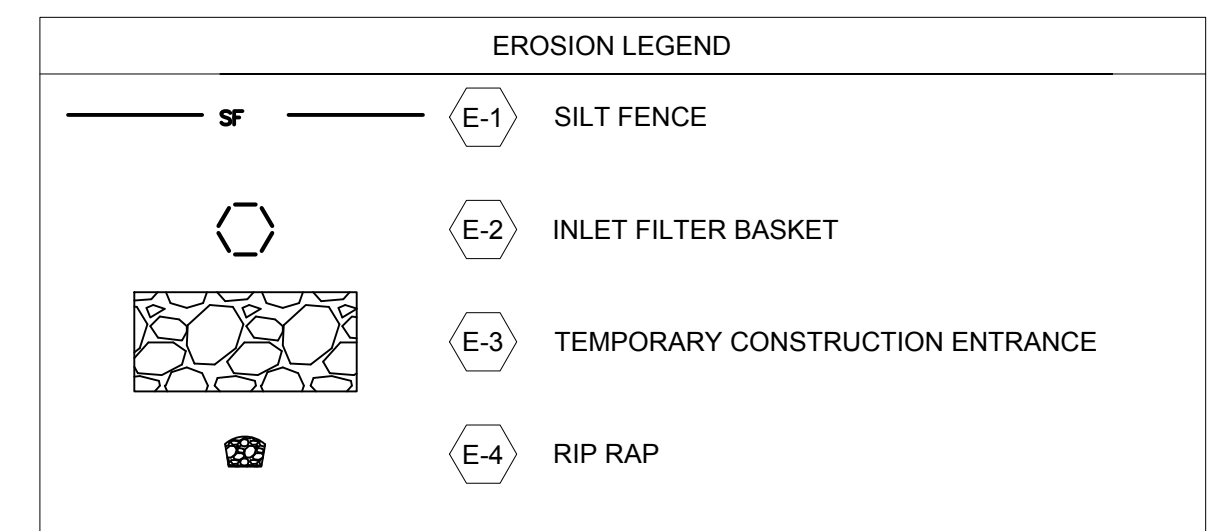
TITLE: TITLE SHEET
 DESCRIPTION: MCDONALD'S - WAUKESHA, WI
 SITE ADDRESS: 2340 E. MORELAND BLVD., WAUKESHA, WI
 SITE ID: 048-0107

SHEET NO: C-0.0
 TITLE SHEET

REV	DATE	DESCRIPTION	BY



- EROSION CONTROL NOTES:**
- CONTRACTOR TO INSTALL CONSTRUCTION ENTRANCE PRIOR TO COMMENCEMENT OF WORK.
 - CONTRACTOR TO INSTALL SILT FENCE PRIOR TO COMMENCEMENT OF ANY EARTHWORK. CONTRACTOR TO MAINTAIN SILT FENCE AS SHOWN AND INSTALL ADDITIONAL SILT FENCE WHEREVER NECESSARY THROUGHOUT CONSTRUCTION ACTIVITIES TO MINIMIZE SOIL EROSION.
 - CONTRACTOR TO INSTALL INLET PROTECTION ON ALL OPEN LID STRUCTURES. SEE INLET PROTECTION DETAIL ON SHEET C-2.2.
 - EROSION CONTROL BLANKET (ROLLMAX ERONET S150 OR APPROVED EQUAL) SHALL BE PLACED ON ALL AREAS WITH SIDE SLOPES OF 4:1 OR GREATER, AND IN BOTTOM AND SIDE SLOPES OF SWALES WHERE NOTED.
 - ALL SEDIMENT AND EROSION CONTROL MEASURES IN AND AROUND THE PROPOSED IMPROVEMENTS ARE TO REMAIN IN PLACE AND TO BE MAINTAINED THROUGHOUT CONSTRUCTION ACTIVITIES UNTIL THE PROPOSED IMPROVEMENTS ARE COMPLETED AND THE SITE ADEQUATELY STABILIZED.



NO.	DATE	DESCRIPTION	BY

PREPARED BY:

V3 Companies
 7325 Janes Avenue
 Woodridge, IL 60517
 630.724.9200 phone
 630.724.9202 fax
 www.v3co.com

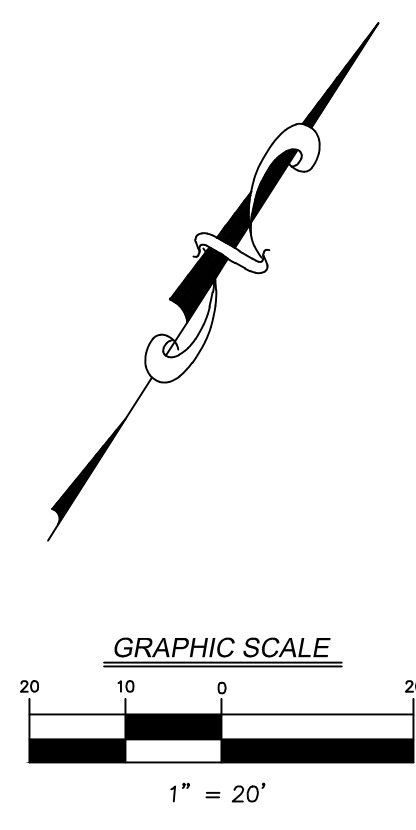
Visio, Vertere, Virtute... The Vision to Transform with Excellence

PREPARED FOR:

M. McDonald's USA, LLC

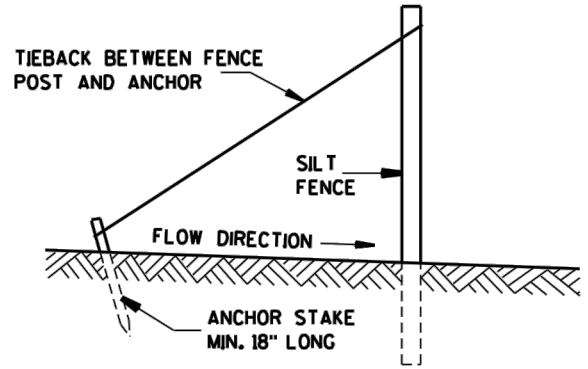
These drawings and specifications are the confidential and proprietary property of McDonald's USA, LLC and shall not be copied or reproduced for use on this specific site in conjunction with its issue date and are not suitable for use on a different site or at a later time. Use of the drawings and specifications for any other project without the written services of properly licensed architects and engineers. Reproduction of the contract documents for reuse on another project is not authorized.

TITLE	DRAWN BY	STD ISSUE DATE	REVIEWED BY	DATE ISSUED	SITE ADDRESS
EROSION CONTROL PLAN	JWG	01-19-17	JWG	01-19-17	2340 E. MORELAND BLVD., WAUKESHA, WI
SHEET NO. C-2.1	DESCRIPTION: MCDONALD'S - WAUKESHA, WI				
EROSION CONTROL PLAN					

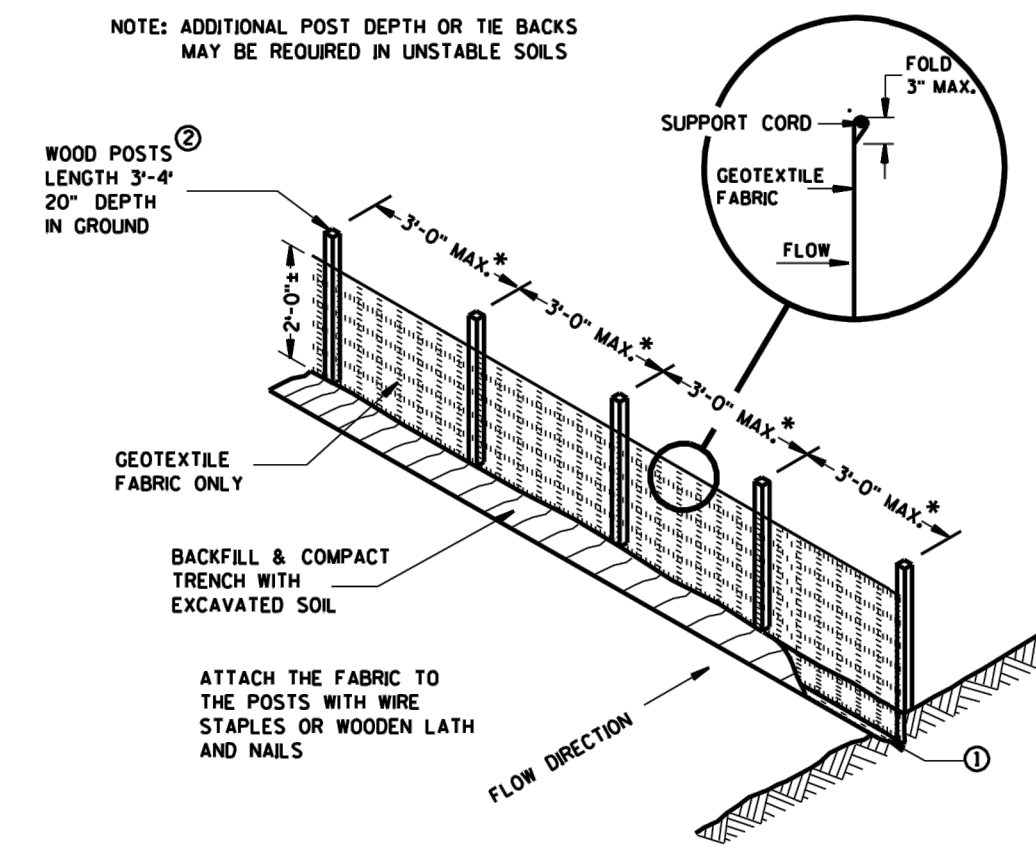


GENERAL NOTES

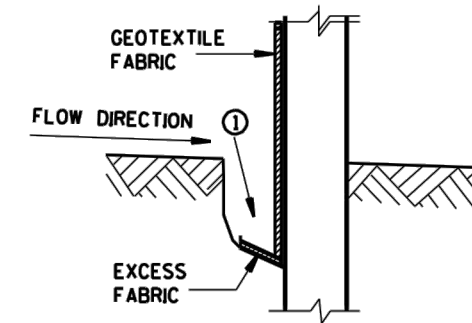
- TRENCH SHALL BE A MINIMUM OF 4" WIDE & 6" DEEP TO BURY AND ANCHOR THE GEOTEXTILE FABRIC. FOLD MATERIAL TO FIT TRENCH AND BACKFILL & COMPACT TRENCH WITH EXCAVATED SOIL.
- WOOD POSTS SHALL BE A MINIMUM SIZE OF 1/2" X 1/2" OF OAK OR HICKORY.
- CONSTRUCT SILT FENCE FROM A CONTINUOUS ROLL IF POSSIBLE BY CUTTING LENGTHS TO AVOID JOINTS. IF A JOINT IS NECESSARY USE ONE OF THE FOLLOWING TWO METHODS: A) TWIST METHOD -- OVERLAP THE END POSTS AND TWIST OR ROTATE, AT LEAST 180 DEGREES; B) HOOK METHOD -- HOOK THE END OF EACH SILT FENCE LENGTH.



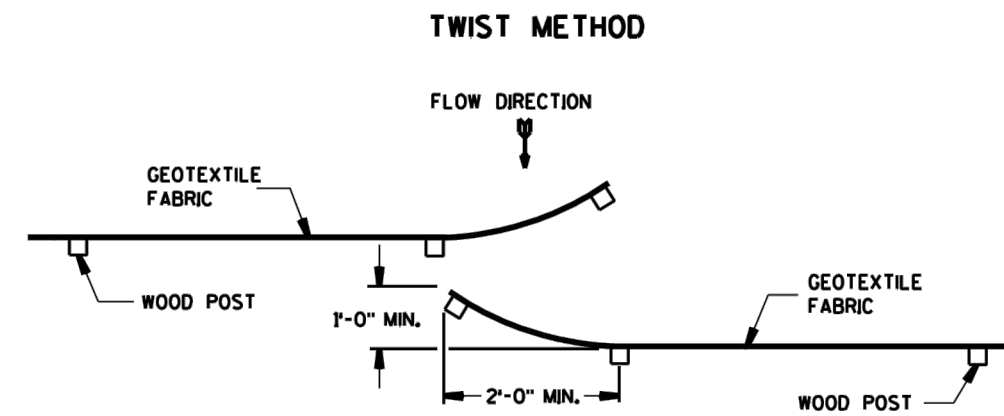
SILT FENCE TIE BACK
(WHEN ADDITIONAL SUPPORT REQUIRED)



SILT FENCE



TRENCH DETAIL



TWIST METHOD



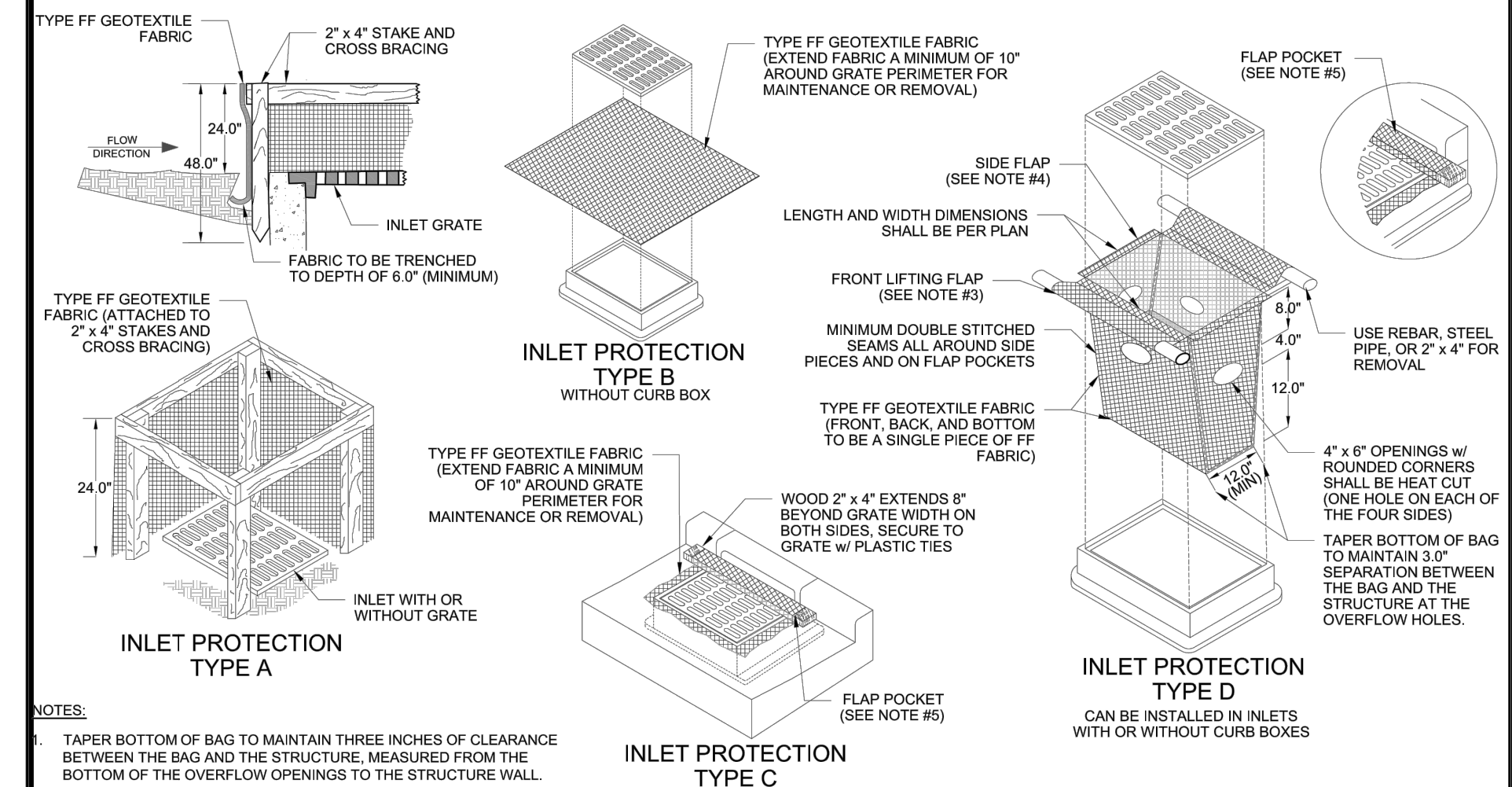
HOOK METHOD

JOINING TWO LENGTHS OF SILT FENCE

This drawing based on Wisconsin Department of Transportation Standard Detail Drawing 8 E 9-6.

SILT FENCE

FIGURE 1. INLET PROTECTION TYPES A, B, C AND D

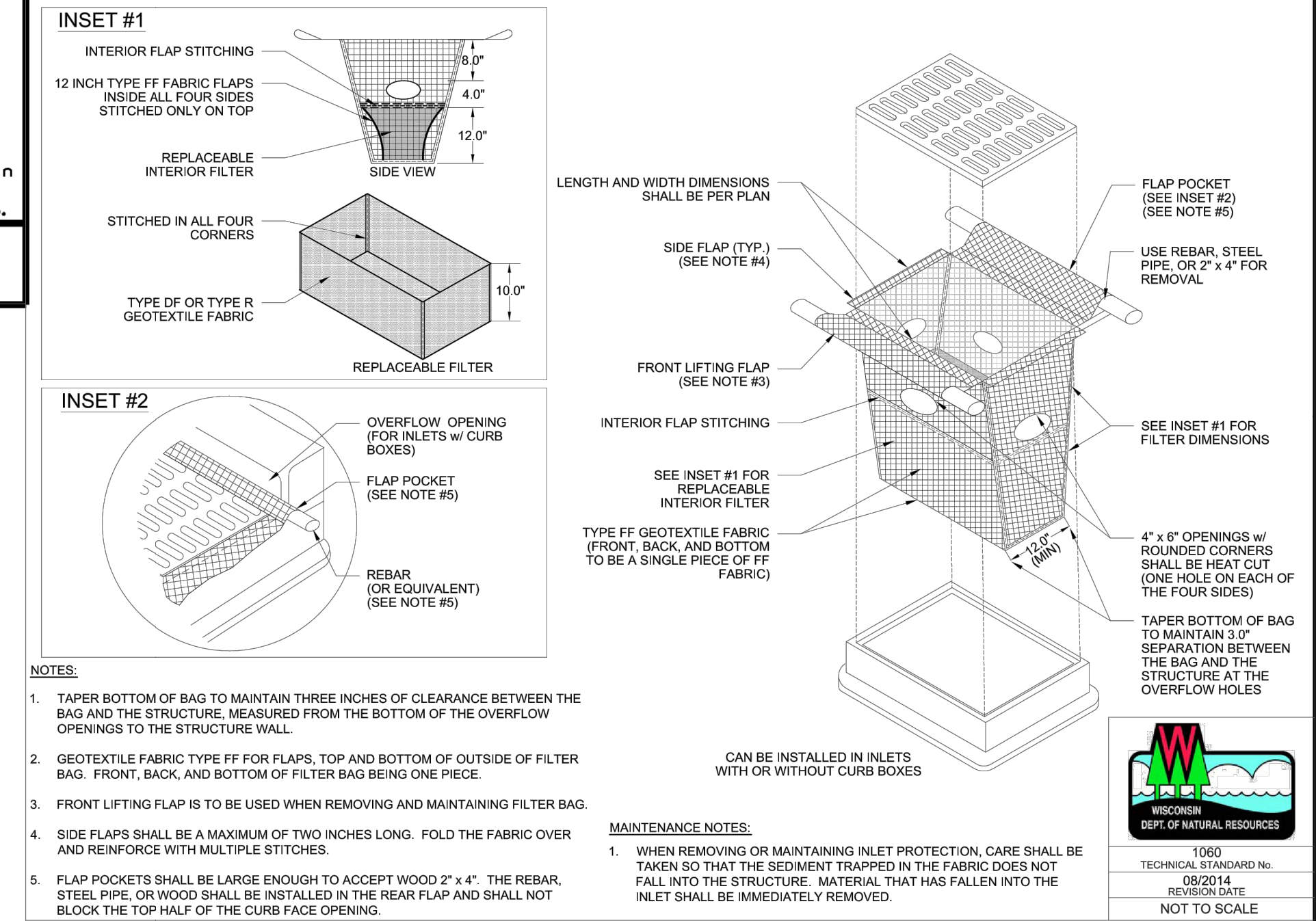


- NOTES:**
- TAPER BOTTOM OF BAG TO MAINTAIN THREE INCHES OF CLEARANCE BETWEEN THE BAG AND THE STRUCTURE, MEASURED FROM THE BOTTOM OF THE OVERFLOW OPENINGS TO THE STRUCTURE WALL.
 - GEOTEXTILE FABRIC TYPE FF FOR FLAPS, TOP AND BOTTOM OF OUTSIDE OF FILTER BAG. FRONT, BACK, AND BOTTOM OF FILTER BAG BEING ONE PIECE.
 - FRONT LIFTING FLAP IS TO BE USED WHEN REMOVING AND MAINTAINING FILTER BAG.
 - SIDE FLAPS SHALL BE A MAXIMUM OF TWO INCHES LONG. FOLD THE FABRIC OVER AND REINFORCE WITH MULTIPLE STITCHES.
 - FLAP POCKETS SHALL BE LARGE ENOUGH TO ACCEPT WOOD 2" x 4". THE REBAR, STEEL PIPE, OR WOOD SHALL BE INSTALLED IN THE REAR FLAP AND SHALL NOT BLOCK THE TOP HALF OF THE CURB FACE OPENING.

- MAINTENANCE NOTES:**
- WHEN REMOVING OR MAINTAINING INLET PROTECTION, CARE SHALL BE TAKEN SO THAT THE SEDIMENT TRAPPED IN THE FABRIC DOES NOT FALL INTO THE STRUCTURE. MATERIAL THAT HAS FALLEN INTO THE INLET SHALL BE IMMEDIATELY REMOVED.



FIGURE 2. INLET PROTECTION TYPE D-M



- NOTES:**
- TAPER BOTTOM OF BAG TO MAINTAIN THREE INCHES OF CLEARANCE BETWEEN THE BAG AND THE STRUCTURE, MEASURED FROM THE BOTTOM OF THE OVERFLOW OPENINGS TO THE STRUCTURE WALL.
 - GEOTEXTILE FABRIC TYPE FF FOR FLAPS, TOP AND BOTTOM OF OUTSIDE OF FILTER BAG. FRONT, BACK, AND BOTTOM OF FILTER BAG BEING ONE PIECE.
 - FRONT LIFTING FLAP IS TO BE USED WHEN REMOVING AND MAINTAINING FILTER BAG.
 - SIDE FLAPS SHALL BE A MAXIMUM OF TWO INCHES LONG. FOLD THE FABRIC OVER AND REINFORCE WITH MULTIPLE STITCHES.
 - FLAP POCKETS SHALL BE LARGE ENOUGH TO ACCEPT WOOD 2" x 4". THE REBAR, STEEL PIPE, OR WOOD SHALL BE INSTALLED IN THE REAR FLAP AND SHALL NOT BLOCK THE TOP HALF OF THE CURB FACE OPENING.

- MAINTENANCE NOTES:**
- WHEN REMOVING OR MAINTAINING INLET PROTECTION, CARE SHALL BE TAKEN SO THAT THE SEDIMENT TRAPPED IN THE FABRIC DOES NOT FALL INTO THE STRUCTURE. MATERIAL THAT HAS FALLEN INTO THE INLET SHALL BE IMMEDIATELY REMOVED.

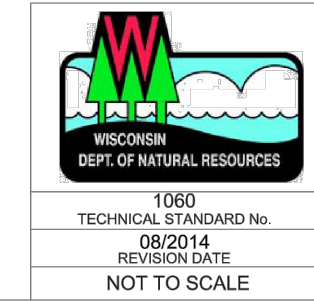
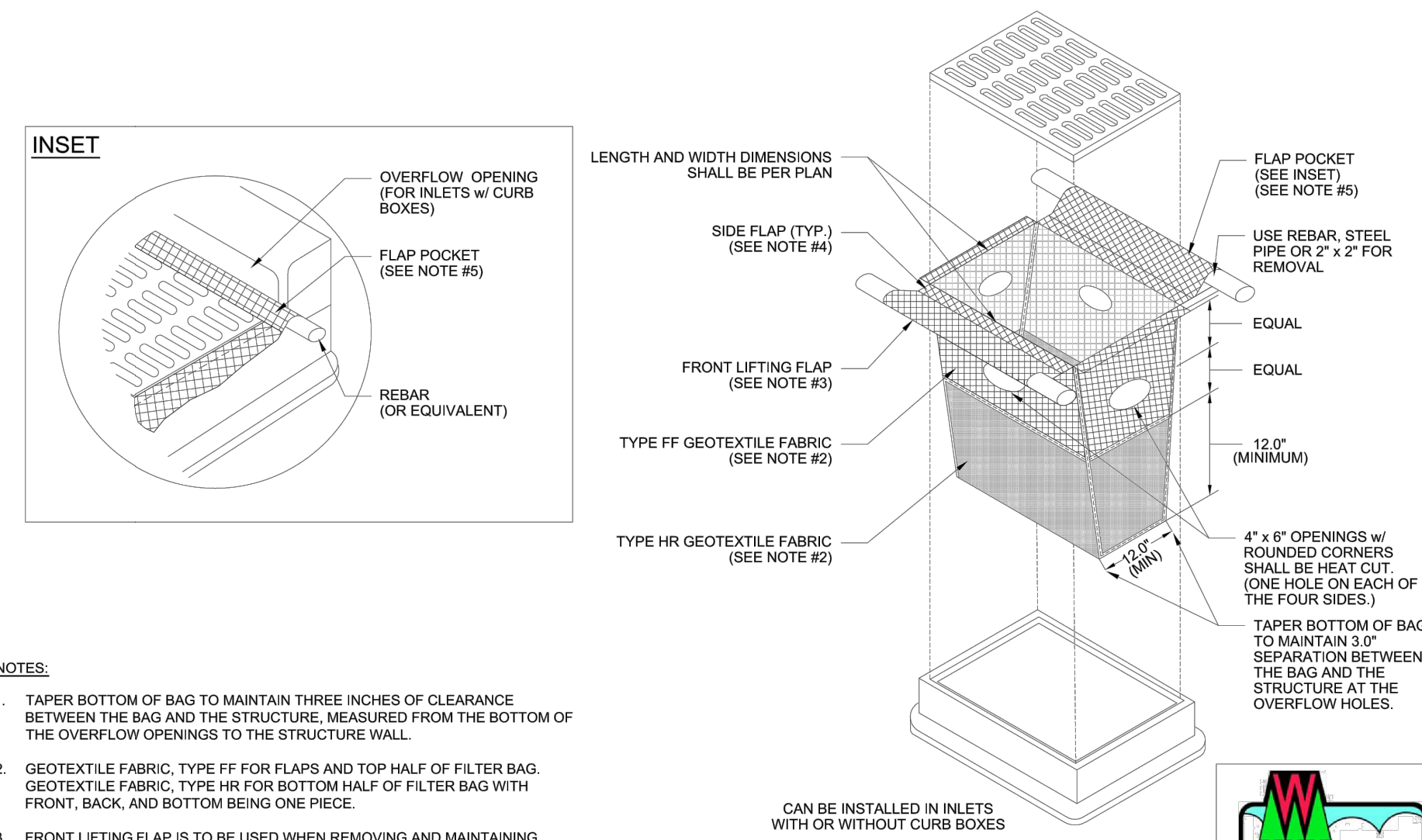
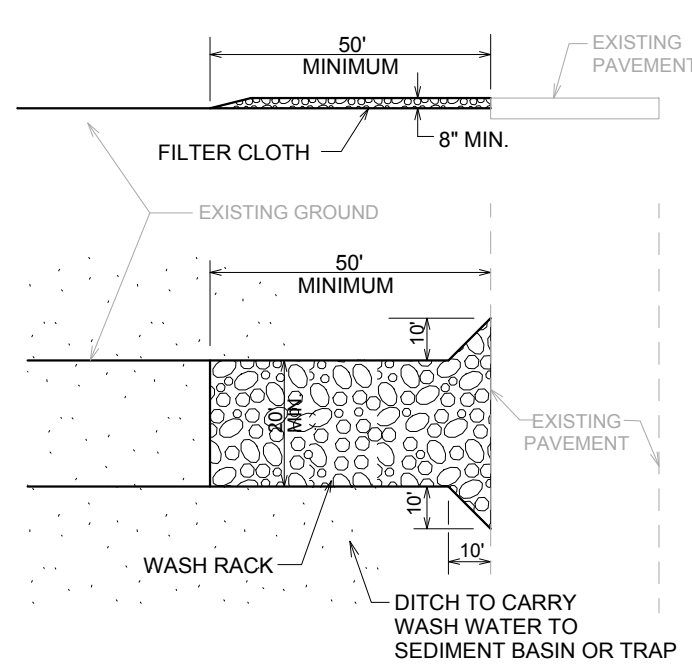
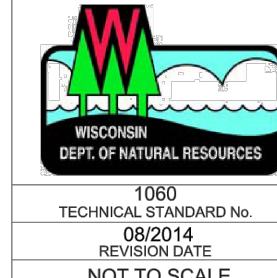


FIGURE 3. INLET PROTECTION TYPE D-HR



- NOTES:**
- TAPER BOTTOM OF BAG TO MAINTAIN THREE INCHES OF CLEARANCE BETWEEN THE BAG AND THE STRUCTURE, MEASURED FROM THE BOTTOM OF THE OVERFLOW OPENINGS TO THE STRUCTURE WALL.
 - GEOTEXTILE FABRIC, TYPE FF FOR FLAPS AND TOP HALF OF FILTER BAG. GEOTEXTILE FABRIC, TYPE HR FOR BOTTOM HALF OF FILTER BAG WITH FRONT, BACK, AND BOTTOM BEING ONE PIECE.
 - FRONT LIFTING FLAP IS TO BE USED WHEN REMOVING AND MAINTAINING FILTER BAG.
 - SIDE FLAPS SHALL BE A MAXIMUM OF TWO INCHES LONG. FOLD THE FABRIC OVER AND REINFORCE WITH MULTIPLE STITCHES.
 - FLAP POCKETS SHALL BE LARGE ENOUGH TO ACCEPT WOOD 2" x 4". THE REBAR, STEEL PIPE, OR WOOD SHALL BE INSTALLED IN THE REAR FLAP AND SHALL NOT BLOCK THE TOP HALF OF THE CURB FACE OPENING.

- MAINTENANCE NOTES:**
- WHEN REMOVING OR MAINTAINING INLET PROTECTION, CARE SHALL BE TAKEN SO THAT THE SEDIMENT TRAPPED IN THE FABRIC DOES NOT FALL INTO THE STRUCTURE. MATERIAL THAT HAS FALLEN INTO THE INLET SHALL BE IMMEDIATELY REMOVED.

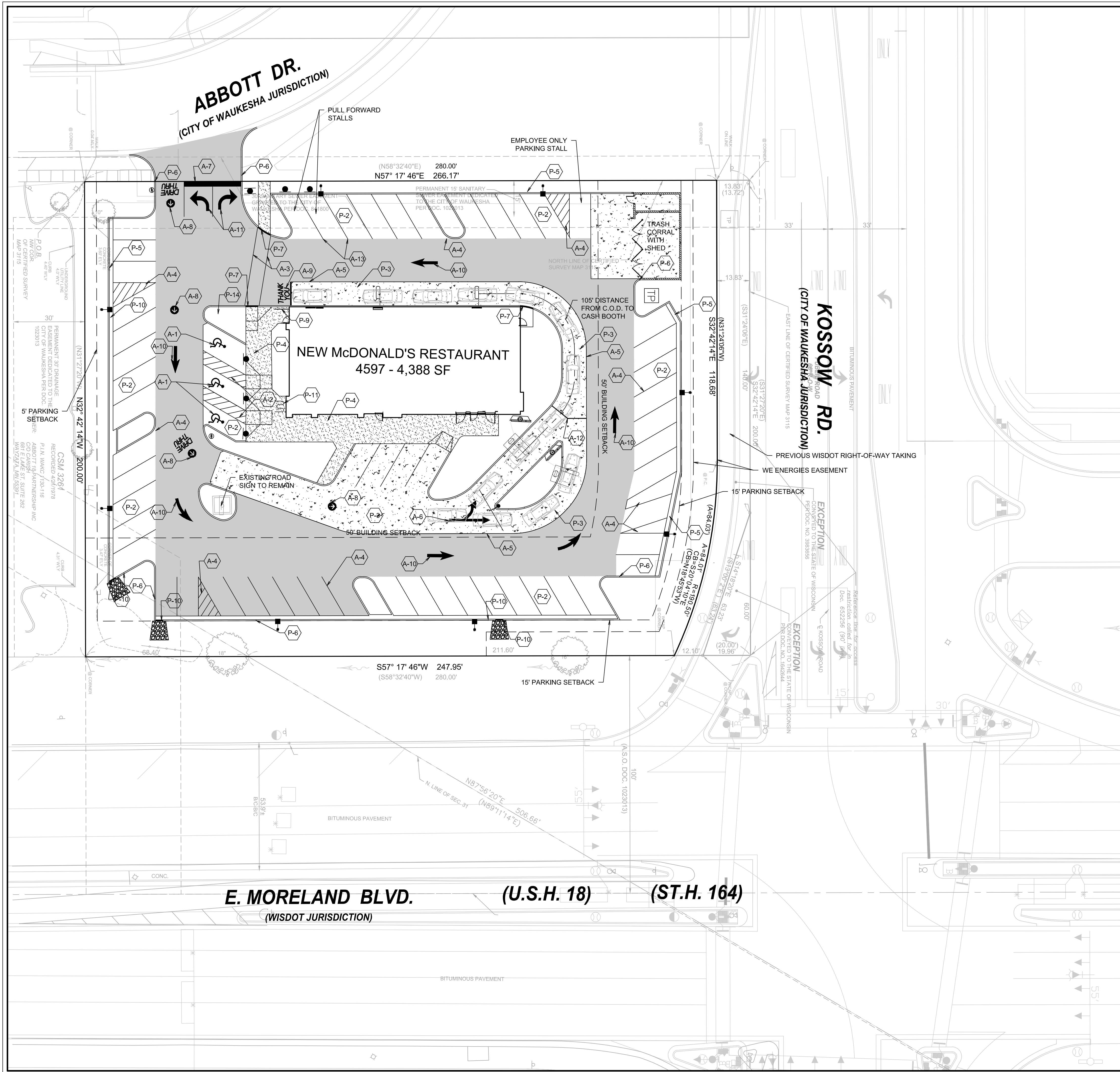


CONSTRUCTION ENTRANCE SPECIFICATIONS

- STONE SIZE - USE 2" STONE OR RECLAIMED OR RECYCLED CONCRETE EQUIVALENT.
- THICKNESS - NOT LESS THAN EIGHT (8) INCHES.
- FILTER CLOTH - SHALL BE PLACED OVER THE ENTIRE AREA PRIOR TO PLACING OF STONE.
- MAINTENANCE - THE ENTRANCE SHALL BE MAINTAINED IN A CONDITION WHICH WILL PREVENT TRACKING OR FLOWING OF SEDIMENT ONTO PUBLIC RIGHTS-OF-WAY. THIS MAY REQUIRE PERIODIC TOP DRESSING WITH ADDITIONAL STONE AS CONDITIONS DEMAND AND REPAIR AND/OR CLEANOUT OF ANY MEASURES USED TO TRAP SEDIMENT. ALL SEDIMENT SPILLED, DROPPED, SPILLED, DROPPED, WASHED OR TRACKED ONTO PUBLIC RIGHTS-OF-WAYS MUST BE REMOVED IMMEDIATELY.
- WASHING - WHEELS SHALL BE CLEANED TO REMOVE SEDIMENT PRIOR TO ENTRANCE ONTO PUBLIC RIGHT-OF-WAY. WHEN WASHING IS REQUIRED, IT SHALL BE DONE ON AN AREA STABILIZED WITH STONE AND WHICH DRAINS INTO AN APPROVED SEDIMENT TRAPPING DEVICE.
- PERIODIC INSPECTION AND NEEDED MAINTENANCE SHALL BE PROVIDED AFTER EACH RAIN.

STABILIZED CONSTRUCTION ENTRANCE (TYPICAL)

BY		DESCRIPTION	
DATE		REV	
PREPARED BY:	V3 Companies 7325 Janes Avenue Woodridge, IL 60517 630.724.9200 phone 630.724.9202 fax www.v3co.com		
REVISION DATE:	1060 TECHNICAL STANDARD NO. 08/2014 REVISION DATE NOT TO SCALE		
TITLE	EROSION CONTROL DETAILS		
DESCRIPTION	MCDONALD'S - WAUKESHA, WI		
SHEET NO.	048-0107		
SITE ADDRESS	2340 E. MORELAND BLVD., WAUKESHA, WI		
DATE ISSUED	01-19-17		
REVIEWED BY	JWG		
STD ISSUE DATE	01-19-17		
DRAWN BY	GREL		
SHEET NO.	C-2.2		
TITLE	EROSION CONTROL DETAILS		



PAVING LEGEND

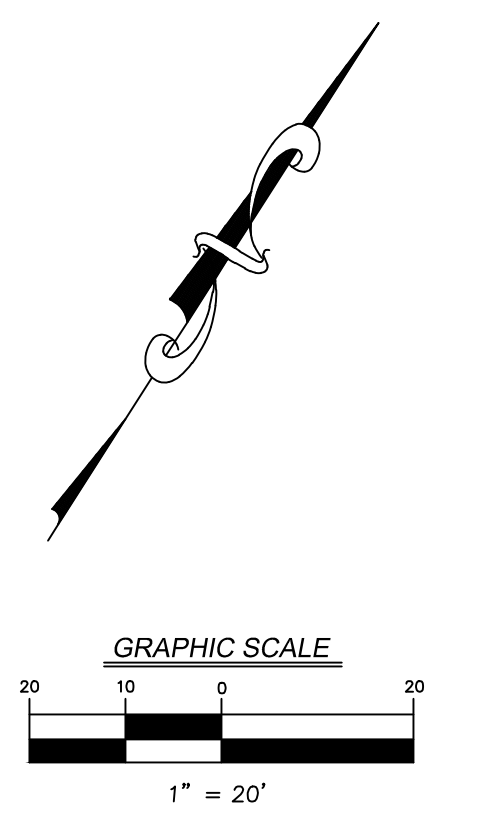
P-1	HEAVY BITUMINOUS PAVEMENT
P-2	STANDARD DUTY PAVEMENT
P-3	CONCRETE PAVEMENT
P-4	CONCRETE SIDEWALK

KEY	DESCRIPTION	STRIPING LEGEND
P-5	10" X 24" CONCRETE CURB	A-1 ADA ACCESSIBLE STALL WITH SYMBOL PER ADA REQUIREMENTS
P-6	6" CONCRETE BARRIER CURB	A-2 ACCESSIBLE AISLE - 4" YELLOW STRIPES @ 45°, 2' O.C.
P-7	DEPRESSED CONCRETE CURB	A-3 6" WIDE PEDESTRIAN ACCESS AISLE WITH 4" WHITE STRIPES
P-8	DETECTABLE WARNING STRIP	A-4 4" WIDE PARKING STRIPE OR STRIPED AREA - 4" WHITE STRIPES @ 45°, 2' O.C.
P-9	HANDRAIL	A-5 6" YELLOW DRIVE-THRU STRIPE
P-10	3LF OF DEPRESSED CURB FOR DRAINAGE	A-6 DOUBLE HEADED ARROW PAINTED YELLOW
P-11	OPTIONAL BIKE RACK	A-7 2' WIDE WHITE STOP BAR
P-12	B6-12 CURB & GUTTER	A-8 "DRIVE-THRU" W/ARROW YELLOW PAVEMENT MARKING
P-13	B6-18 CURB & GUTTER	A-9 "THANK YOU" YELLOW PAVEMENT MARKING WITH 6" DOUBLE PAINTED YELLOW STRIPE
P-14	FLAGPOLE	A-10 YELLOW PARKING LOT DIRECTIONAL ARROWS
		A-11 WHITE INGRESS / EGRESS ARROWS
		A-12 6" WIDE YELLOW MERGE STRIPE
		A-13 6" YELLOW STRIPE

SITE DATA

STREET LOCATION: 2340 E. MORELAND BOULEVARD, WAUKESHA, WI 53186
 SITE AREA: 52,751 SF (1.21 AC.)
 CURRENT ZONING: B-5 COMMUNITY BUSINESS
 BUILDING AREA: 4,388 SF

REQUIREMENTS	REQUIRED	PROVIDED
ZONING REQUIREMENTS		
LANDSCAPE SETBACKS		
NORTH SIDE	10'	5.0'
WEST SIDE	10'	9.6'
EAST SIDE	10'	15'
SOUTH SIDE	10'	15'
INTERIOR LANDSCAPE		
BUILDING SETBACKS		
NORTH SIDE	50'	52.8'
WEST SIDE	10'	84.6'
EAST SIDE	50'	95.3'
SOUTH SIDE	50'	100.4'
PARKING STALL SIZE	9'x18'	9'x18'
DRIVE AISLE WIDTH		
ONE WAY (60° PARKING)	X'	18', 20'
TWO WAY (90° PARKING)	N/A	
PARKING		
(1 STALL/100 SF GROSS FLOOR AREA)	44 STALLS	55 STANDARD 3 ACCESSIBLE 58 TOTAL
PERVIOUS/IMPERVIOUS AREAS		
PERVIOUS AREA		13,828.1 SF
IMPERVIOUS AREA		38,922.5 SF
GREEN SPACE PERCENTAGE		26.2%

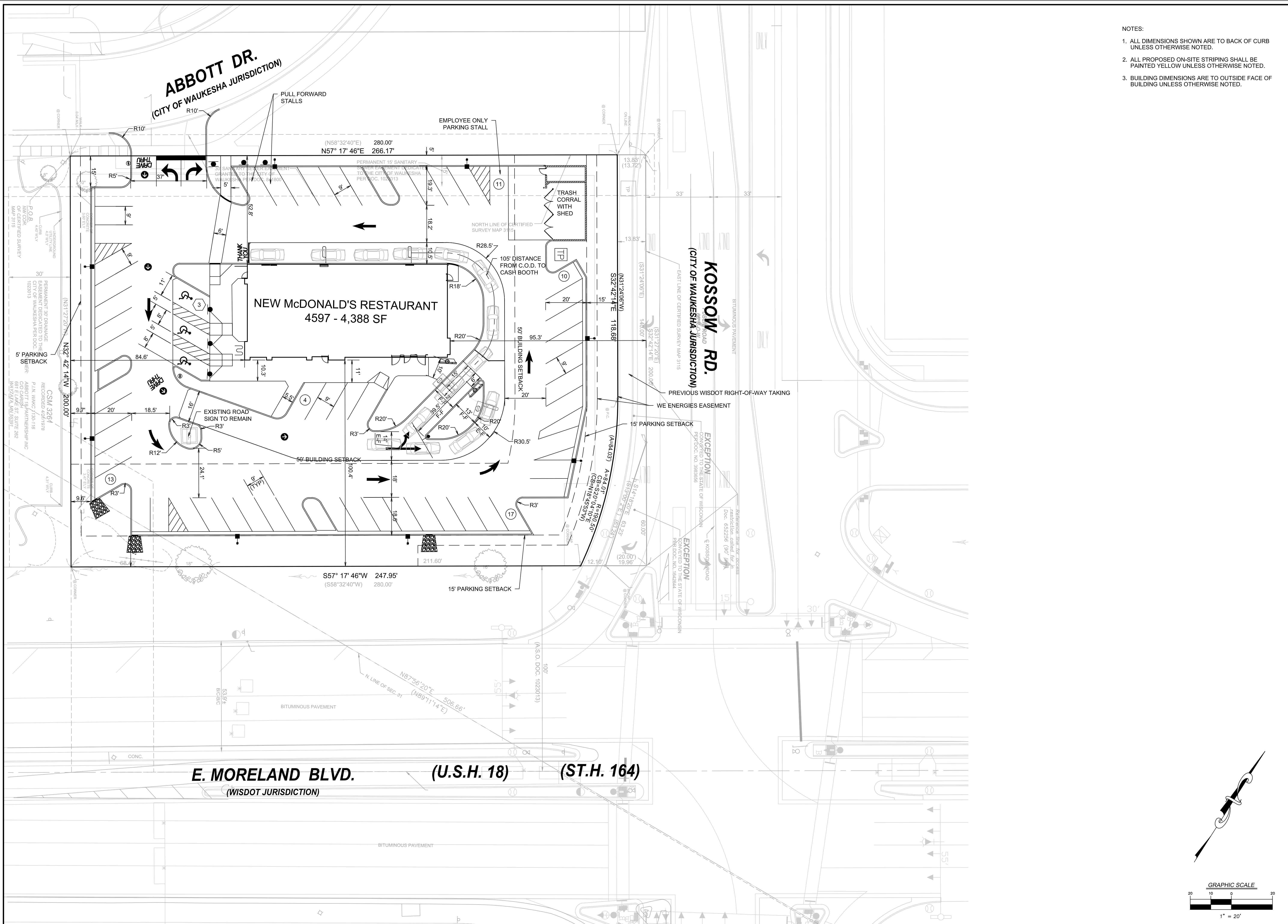


PREPARED BY: V3 Companies
 7325 Janes Avenue
 Woodridge, IL 60517
 630.724.9200 phone
 630.724.9202 fax
 www.v3co.com

PREPARED FOR: **M. McDonald's USA, LLC**
 These drawings and specifications are the confidential and proprietary property of McDonald's USA, LLC and shall not be copied or reproduced in any form without the prior written consent of McDonald's USA, LLC. Use of these drawings for any other project is strictly prohibited. Use of these drawings for any other project is strictly prohibited. Use of these drawings for any other project is strictly prohibited.

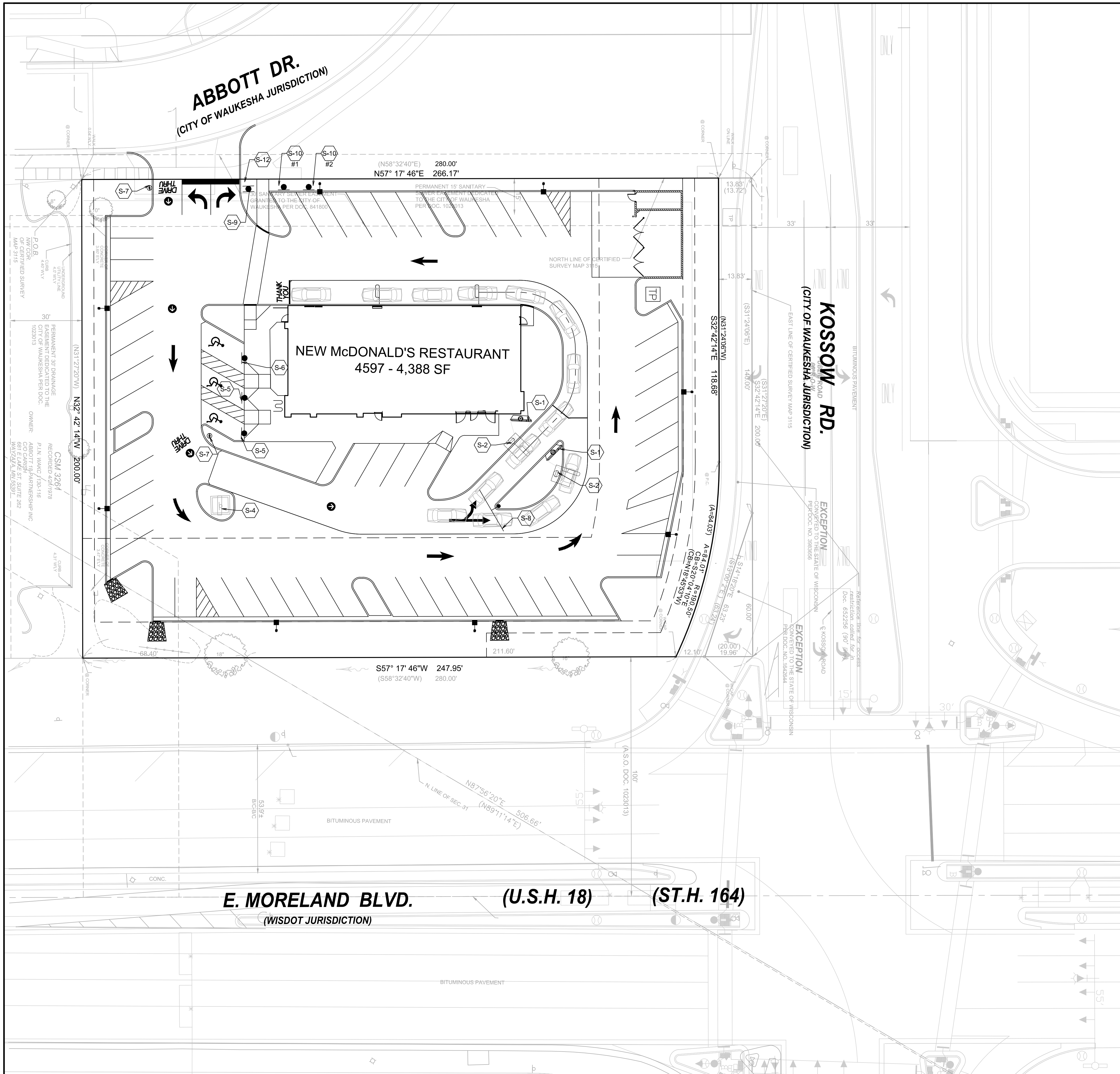
TITLE	DATE	BY
SITE PLAN	01-19-17	JWG
DESCRIPTION		
MCDONALD'S - WAUKESHA, WI		
SHEET NO.	048-0107	
SITE ADDRESS	2340 E. MORELAND BLVD., WAUKESHA, WI	

06240-31A - SITE PLAN



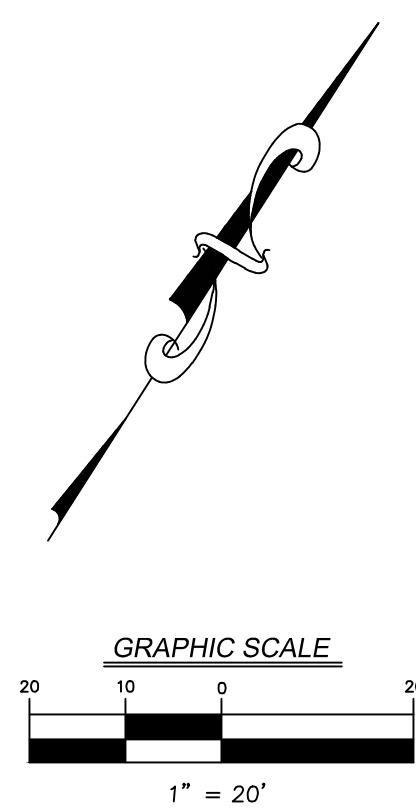
- NOTES:
1. ALL DIMENSIONS SHOWN ARE TO BACK OF CURB UNLESS OTHERWISE NOTED.
 2. ALL PROPOSED ON-SITE STRIPING SHALL BE PAINTED YELLOW UNLESS OTHERWISE NOTED.
 3. BUILDING DIMENSIONS ARE TO OUTSIDE FACE OF BUILDING UNLESS OTHERWISE NOTED.

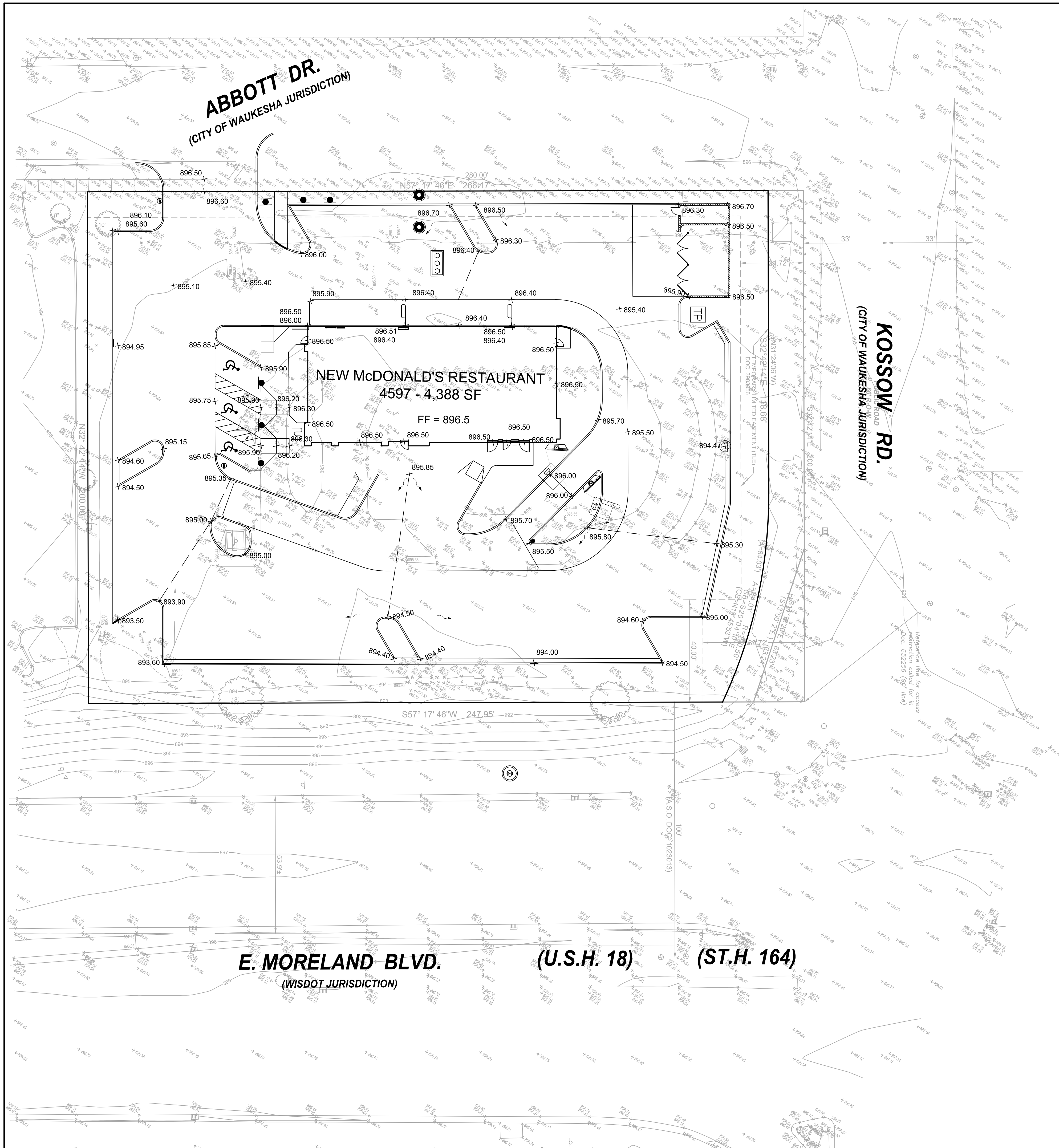
SHEET NO.	TITLE	DRAWN BY	SITE ADDRESS	DATE ISSUED	BY
C-3.1	LAYOUT PLAN	JWG	2340 E. MORELAND BLVD., WAUKESHA, WI	01-19-17	
DESCRIPTION		MCDONALD'S - WAUKESHA, WI			
PREPARED FOR		M. McDonald's USA, LLC			
PREPARED BY		V3 Companies 7325 Janes Avenue Woodridge, IL 60517 630.724.9200 phone 630.724.9202 fax www.v3co.com			
SHEET NO.		048-0107			
TITLE		LAYOUT PLAN			
DRAWN BY		JWG			
DATE ISSUED		01-19-17			
SITE ADDRESS		2340 E. MORELAND BLVD., WAUKESHA, WI			
DESCRIPTION		MCDONALD'S - WAUKESHA, WI			
PREPARED FOR		M. McDonald's USA, LLC			
PREPARED BY		V3 Companies 7325 Janes Avenue Woodridge, IL 60517 630.724.9200 phone 630.724.9202 fax www.v3co.com			
SHEET NO.		048-0107			
TITLE		LAYOUT PLAN			
DRAWN BY		JWG			
DATE ISSUED		01-19-17			
SITE ADDRESS		2340 E. MORELAND BLVD., WAUKESHA, WI			
DESCRIPTION		MCDONALD'S - WAUKESHA, WI			



SIGN LEGEND	
	S-1 MENU BOARD
	S-2 COD W/ CANOPY
	S-3 PROPOSED NEXT-GENERATION MONUMENT SIGN
	S-4 EXISTING McDONALD'S ROAD SIGN
	S-5 BOLLARD MOUNTED MUTCD SIGN R7-8 - HANDICAP PARKING
	S-6 BOLLARD MOUNTED MUTCD SIGN R7-8C - ADA VAN ACCESSIBLE PARKING
	S-7 DIRECTIONAL SIGN WITHOUT LOGO
	S-8 DOUBLE GATEWAY WELCOME SIGN
	S-9 STOP SIGN
	S-10 PULL FORWARD SIGN ON MOVABLE PEDESTAL
	S-11 RIGHT TURN ONLY SIGN
	S-12 DO NOT ENTER SIGN

DRAWN BY AREI	STD ISSUE DATE 01-19-17	REVIEWED BY JWVG	DATE ISSUED 01-19-17	TITLE	SHEET NO.	BY
				SIGNAGE PLAN		
PREPARED FOR M. McDonald's USA, LLC <small>These drawings and specifications are the confidential and proprietary property of McDonald's USA, LLC and shall not be copied or reproduced for use on this specific site in conjunction with its issue date and are not suitable for use on a different site or at a later time. Use of the services of properly licensed architects and engineers. Reproduction of the contract documents for reuse on another project is not authorized.</small>				DESCRIPTION	REV	
MCDONALD'S - WAUKESHA, WI SITE ADDRESS 048-0107 2340 E. MORELAND BLVD., WAUKESHA, WI				048-0107		
				C-3.2		
				SIGNAGE PLAN		



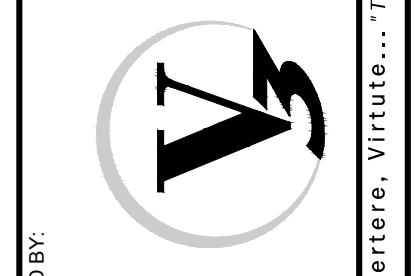


- NOTES:
1. ALL PAVEMENT SPOT GRADE ELEVATIONS AND RIM ELEVATIONS WITHIN OR ALONG CURB AND GUTTER REFER TO EDGE OF PAVEMENT ELEVATIONS UNLESS OTHERWISE NOTED.
 2. ALL ELEVATIONS SHOWN DEPICT FINISHED GRADE UNLESS OTHERWISE NOTED. SUBTRACT TOPSOIL THICKNESS OR PAVEMENT SECTION TO ESTABLISH SUBGRADE ELEVATIONS.
 3. PROVIDE 1.50% CROSS SLOPE AND 4.00% MAXIMUM LONGITUDINAL SLOPE ON ALL SIDEWALKS AND PEDESTRIAN PATHS UNLESS OTHERWISE INDICATED. PLEASE NOTE THAT THE WISCONSIN ACCESSIBILITY CODE REQUIRES A MAXIMUM CONSTRUCTED CROSS SLOPE OF 2.00% AND LONGITUDINAL SLOPE OF 5.00%.

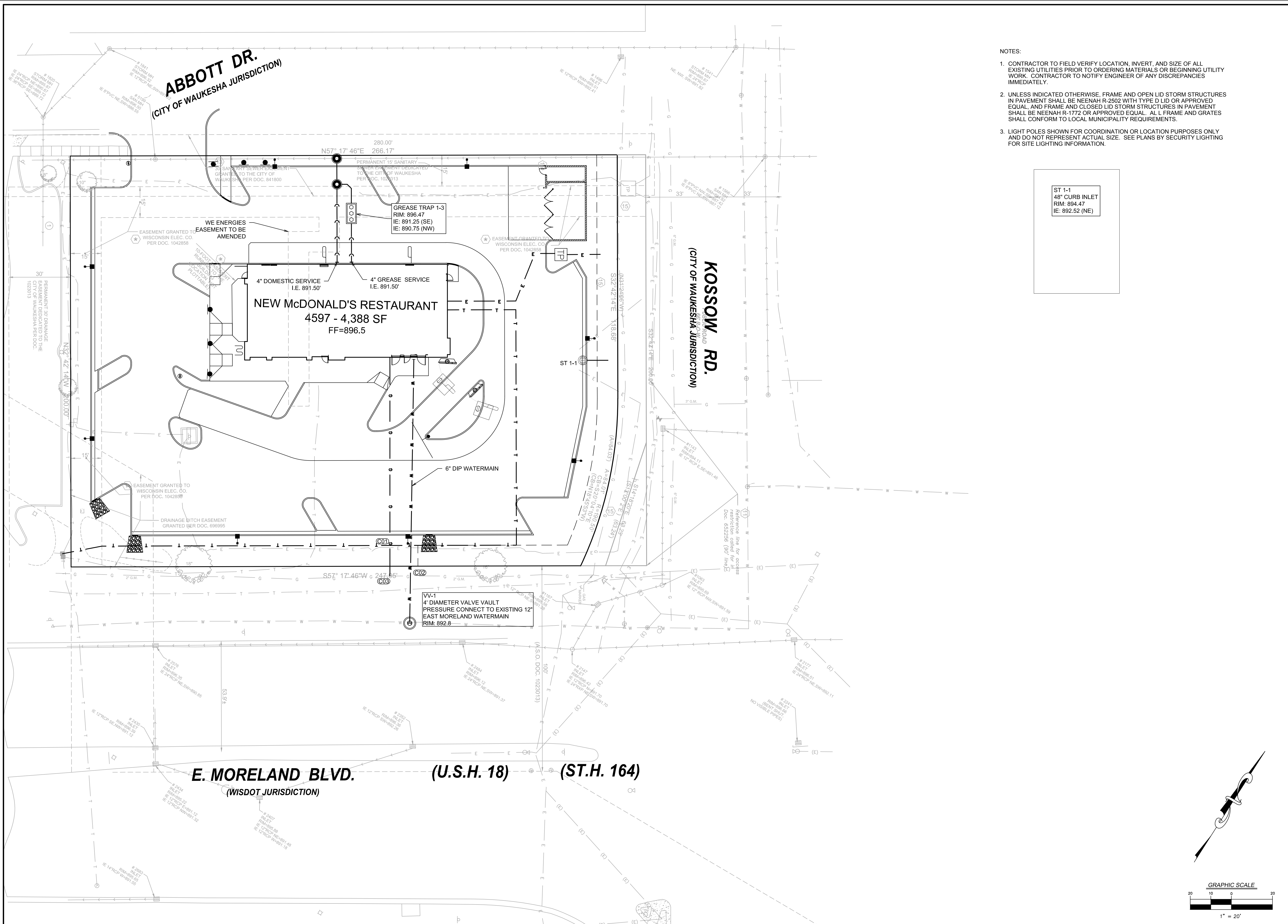
SHEET NO.	TITLE	DRAWN BY	STD ISSUE DATE	REVIEWED BY	DATE ISSUED	SITE ADDRESS	DESCRIPTION	REV	DATE	DESCRIPTION	BY
048-0107	GRADING PLAN	REI	01-19-17	JWG	01-19-17	2340 E. MORELAND BLVD., WAUKESHA, WI	MCDONALD'S - WAUKESHA, WI				
C-4.0	GRADING PLAN										

PREPARED FOR:
M. McDonald's USA, LLC
 These drawings and specifications are the confidential and proprietary property of McDonald's USA, LLC and shall not be copied or reproduced for use on this specific site in conjunction with its issue date and are not suitable for use on a different site or at a later time. Use of these drawings and specifications without the express written consent of the services of properly licensed architects and engineers. Reproduction of the contract documents for reuse on another project is not authorized.

PREPARED BY:
V3 Companies
 7325 Janes Avenue
 Woodridge, IL 60517
 630.724.9200 phone
 630.724.9202 fax
 www.v3co.com

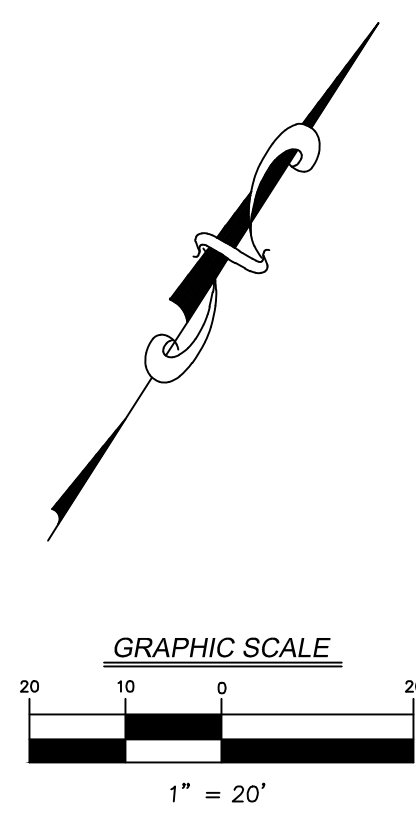


--	--	--	--	--	--	--	--	--	--	--	--



- NOTES:
- CONTRACTOR TO FIELD VERIFY LOCATION, INVERT, AND SIZE OF ALL EXISTING UTILITIES PRIOR TO ORDERING MATERIALS OR BEGINNING UTILITY WORK. CONTRACTOR TO NOTIFY ENGINEER OF ANY DISCREPANCIES IMMEDIATELY.
 - UNLESS INDICATED OTHERWISE, FRAME AND OPEN LID STORM STRUCTURES IN PAVEMENT SHALL BE NEENAH R-2502 WITH TYPE D LID OR APPROVED EQUAL, AND FRAME AND CLOSED LID STORM STRUCTURES IN PAVEMENT SHALL BE NEENAH R-1772 OR APPROVED EQUAL. ALL L FRAME AND GRATES SHALL CONFORM TO LOCAL MUNICIPALITY REQUIREMENTS.
 - LIGHT POLES SHOWN FOR COORDINATION OR LOCATION PURPOSES ONLY AND DO NOT REPRESENT ACTUAL SIZE. SEE PLANS BY SECURITY LIGHTING FOR SITE LIGHTING INFORMATION.

ST 1-1
48" CURB INLET
RIM: 894.47
IE: 892.52 (NE)



SHEET NO.	UTILITY PLAN		DATE	REV	DESCRIPTION	BY
	C-5.0					
TITLE	UTILITY PLAN					
DESCRIPTION	MCDONALD'S - WAUKESHA, WI					
SITE ID	048-0107	SITE ADDRESS	2340 E. MORELAND BLVD., WAUKESHA, WI			
DRAWN BY	JREI	STD ISSUE DATE	01/19/17			
REVIEWED BY	JWVG	DATE ISSUED	01/19/17			
<p>PREPARED FOR: M. McDonald's USA, LLC</p> <p>These drawings and specifications are the confidential and proprietary property of McDonald's USA, LLC and shall not be copied or reproduced for use on this specific site in conjunction with its issue date and are not suitable for use on a different site or at a later time. Use of the services of properly licensed architects and engineers. Reproduction of the contract documents for reuse on another project is not authorized.</p>						
<p>PREPARED BY: V3 Companies 7325 Janes Avenue Woodridge, IL 60517 630.724.9200 phone 630.724.9202 fax www.v3co.com</p>						
<p>Visio, Vertere, Virtute... The Vision to Transform with Excellence</p>						

NOTES:

- THE FOOTCANDLE LEVELS AS SHOWN ARE BASED ON THE FOLLOWING CRITERIA. ANY SUBSTITUTIONS IN SPECIFIED FIXTURES OR CHANGES TO LAYOUT WILL AFFECT LIGHTING LEVELS SHOWN AND WILL NOT BE THE RESPONSIBILITY OF SECURITY LIGHTING.
- THE CONTRIBUTION OF THE SDDFIT / BUILDING LIGHTING IS NOT REFLECTED ON THE DRAWING UNLESS SDDFIT / BUILDING LIGHTING IS SPECIFIED IN THE FIXTURE SCHEDULE BELOW.
- DISTANCE BETWEEN READINGS 10'
- FINAL ADJUSTMENTS TO AIMING ANGLE/DIRECTION OF FIXTURES MAY BE REQUIRED TO ELIMINATE LIGHT TRESPASS OR GLARE ONTO ADJOINING PROPERTIES OR ROADWAYS.

ABBOTT DR.
(CITY OF WAUKESHA JURISDICTION)

KOSSOW RD.
(CITY OF WAUKESHA JURISDICTION)

NEW MCDONALD'S RESTAURANT
4597 - 4,388 SF

PAVED SURFACE READINGS

Average 3.1
Maximum 7.6
Minimum 0.6
Avg/Min 5.22
Max/Min 12.67


PROPERTY LINE READINGS

Average 0.1
Maximum 0.5
Minimum 0.0
Avg/Min N/A
Max/Min N/A

VP-L Viper (Large)

FEATURES

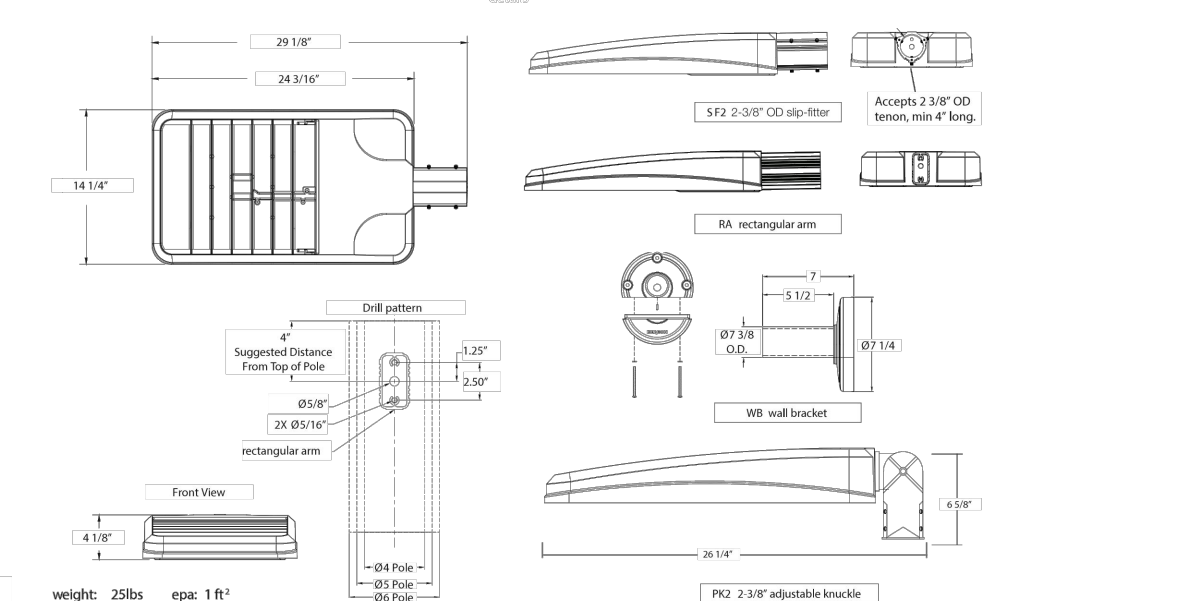
- The Beacon Viper luminaire is available in two sizes with a wide choice of different LED wattage configurations and optical distributions designed to replace HID lighting up to 1000W MH or HPS and with 5 different mounting options for application in a wide variety of new and existing installations. Luminaires are suitable for wet locations.
- Each Viper luminaire is supplied with an one piece optical cartridge system consisting of an LED engine, LED lamps, optics, gasket and stainless steel bezel.
- A thermal circuit, LIFESHIELD™, shall protect the luminaire from excessive temperature by interfacing with the 0-10V dimmable drivers to reduce drive current as necessary.
- Aluminum thermal clad board with 0.062" thick aluminum base layer, thermally conductive dielectric layer, 0.0014" thick copper circuit layer circuit layer designed with copper pours to minimize thermal impedance across dielectric.



ORDERING INFORMATION

MODEL	CCT-COLOR TEMP.	VOLTAGE	MOUNTING OPTIONS	COLOR
VP-L Viper (Large)	5K 5000°K (std.) 4K 4000°K 3K 3000°K	UNW 120-277V 347 347V 450 480V	RA Rectangular Arm SF2 2 1/2" OD Slipfitter PK2 2 1/2" Adjustable Knuckle WB Wall Bracket	B8T Basic Black Textured BMT Black Matte Textured W8T White Textured MBT Metallic Bronze Textured B2T Bronze Textured GYS Gray Smooth DPS Dark Platinum Smooth GAT Green Textured MST Metallic Silver Textured MTT Metallic Titanium Textured OWI Old World Iron RAL

DETAILS



SQUARE STRAIGHT STEEL POLES

Specifications

SSP SERIES

- Square straight steel shaft
- One-piece construction
- 2 3/8" OD tenons, or factory-drilled side mount
- Ground lug standard (3/8" 16 thread)
- Steel base plate
- Two-piece base cover
- Four L-shaped fully galvanized anchor bolts with nuts and washers, metal template
- Finished in weatherproof powder-coat paint
- Gasketed hand hole standard

ORDERING INFORMATION

Pole Catalog Number	Height	Strength EPA	Wind Load Rating: 10mpg EPA	10mpg EPA	10mpg EPA	Pole Size	Base Size	Anchor Bolt Size	Suggested Bolt Circle	Min. Pole	Max. Pole	Pole Weight lbs.
SSP-4118-XXX-XX	18	13.8	10.6	8.2	6.3	4"	10.25"	3/4"	10.5"	8-11"	4"	147
SSP-4125-XXX-XX	25	6.4	4.3	2.7	1.4	4"	10.25"	3/4"	10.5"	8-11"	4"	190
SSP-5125-XXX-XX	25	8.8	5.9	3.6	1.9	5"	12"	1"	10.5"	10-13.5"	4"	231
SSP-4725-XXX-XX	25	10.9	8.1	6.0	4.4	4"	11"	3/4"	10.5"	8-11"	4"	266
SSP-5725-XXX-XX	22	22.4	17.3	13.5	10.5	5"	12"	1"	10.5"	10-13.5"	4"	263
SSP-5730-XXX-XX	28	13.7	9.9	7.1	4.9	5"	12"	1"	10.5"	10-13.5"	4"	340
SSP-5730-XXX-XX	30	11.5	8.0	5.4	3.4	5"	12"	1"	10.5"	10-13.5"	4"	398

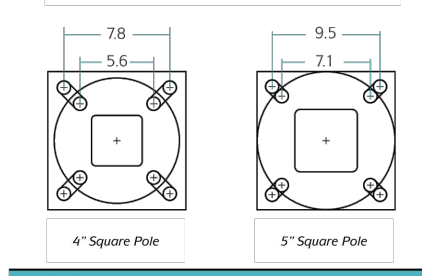
1 Rating Number - based on steel does not include tenon or mounting for side mounting
2 Rating Number - based on aluminum does not include tenon or mounting for side mounting
3 Allowance for base coating based on AASHTO 2009 (1985) specifications
4 Minimum acceptable luminaire and socket weight is determined by multiplying the EPA values above by 0.95
5 Factory applied finishes must be used unless another finish is specified in the drawing
6 Factory applied finishes must be used unless another finish is specified in the drawing

CATALOG LOGIC

SAMPLE CATALOG NUMBER

SSP XX XX X X XX XX

Series	Shaft Size	Nominal Height	Top Type	Mounting Arrangement	Fixture Type	Option	Finish
SSP	Square	Square	Square	Square	Square	Square	Square

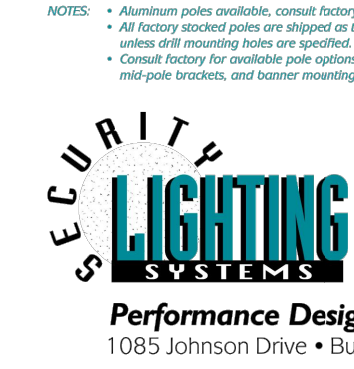


- FINISH**
- DB Dark Bronze
 - BK Black
 - WH White
 - PS Platinum Silver
 - OD Natural Galvanized Finish

- SECURITY LIGHTING MOUNTING ARRANGEMENT**
- A One Fixture
 - B Two Fixtures at 90°
 - C Two Fixtures at 180°
 - D Three Fixtures at 90°
 - F Four Fixtures at 90°
 - P Tenon only

SECURITY LIGHTING TENON TOP MOUNTING BRACKET

- FINITURE TYPE**
- 0 None, tenon only
 - 1 ASD/F, PSD, RSD, RCL, W, MGC, SL, CRM, CM, CM2
- OPTION**
- BLANK Standard
 - GL Hot Dip Galvanized



A HUBBELL LIGHTING, INC. COMPANY
 Performance Designed Lighting Products
 1085 Johnson Drive • Buffalo Grove, IL 60089 • TOLL-FREE: 800-544-4848 • PHONE: 847-279-0627 • FAX: 847-279-0642
 www.securitylighting.com Rev 1/12

FIXTURE TYPE:	SYMBOL	FIXTURE QUANTITY	CONFIG	QUANTITY	TENON TOP FITTERS	QUANTITY	EPA	MOUNTING HEIGHT	LLF	POLE TYPE:	QUANTITY	WIND Load	ALLOWED EPA
VP-L-96NB-280-4K-T4-UNV-RA--BLC	☐	8	SGL	8	TTFVIPER	8	1.00	21'	0.87	SSP-4118-GL--TT (4")	8	90mph	7.2

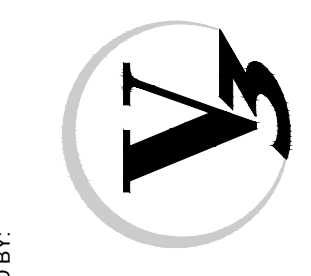
* PROJECT WIND LOAD CRITERIA BASED ON:
 50 YEAR MEAN RECURRENCE INTERVAL
 7-10 WIND SPEEDS (3-SEC PEAK GUST MPH)

THIS DRAWING MEETS OR EXCEEDS MINIMUM CURRENT ILLUMINATION SPECIFICATIONS OF A 3-4 FOOTCANDLE AVERAGE, UNLESS SUPERSEDED BY OTHER REQUIREMENTS.

THIS LAYOUT MAY NOT MEET TITLE 24 OR LOCAL ENERGY REQUIREMENTS. IF THIS LAYOUT NEEDS TO BE TITLE 24 COMPLIANT OR MEET OTHER ENERGY REQUIREMENTS, PLEASE CONSULT FACTORY WITH SPECIFIC DETAILS REGARDING PROJECT REQUIREMENTS SO THAT REVISIONS MAY BE MADE TO THE DRAWING.

THIS LIGHTING PATTERN REPRESENTS ILLUMINATION LEVELS CALCULATED FROM LABORATORY DATA TAKEN UNDER CONTROLLED CONDITIONS IN ACCORDANCE WITH ILLUMINATING ENGINEERING SOCIETY APPROVED METHODS. ACTUAL PERFORMANCE OF ANY MANUFACTURER'S LUMINAIRES MAY VARY DUE TO VARIATION IN ELECTRICAL VOLTAGE, TOLERANCE IN LAMPS, AND OTHER VARIABLE FIELD CONDITIONS.

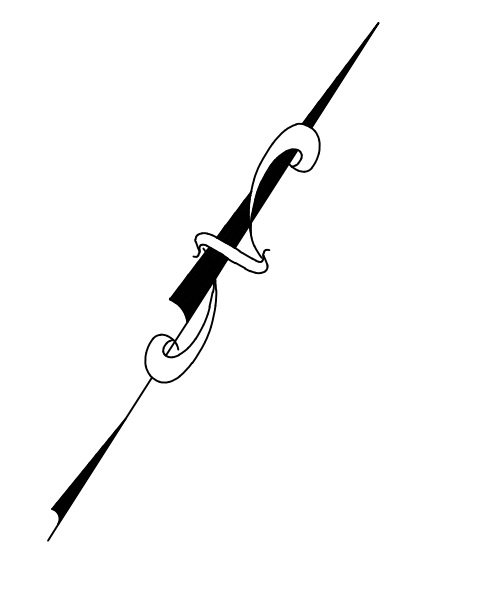
V3 Companies
 7325 Janes Avenue
 Woodridge, IL 60517
 630.724.9200 phone
 630.724.9202 fax
 www.v3co.com



M. McDonald's USA, LLC
 These drawings and specifications are the confidential and proprietary property of McDonald's USA, LLC and shall not be copied or reproduced in any manner without the prior written consent of McDonald's USA, LLC for use on a different site or at a later time. Use of these drawings and specifications without the prior written consent of McDonald's USA, LLC constitutes a violation of copyright law and may result in the revocation of the license of the contract documents for reuse on another project is not authorized.

DRAWN BY	DATE	STY	ISSUE DATE	ISSUE
AW	01-19-17	1	01-19-17	1

TITLE: PHOTOMETRIC PLAN
 DESCRIPTION: MCDONALD'S - WAUKESHA, WI
 SHEET NO: C-8.0
 PHOTOMETRIC PLAN



048-0107
C-8.0
 PHOTOMETRIC PLAN