

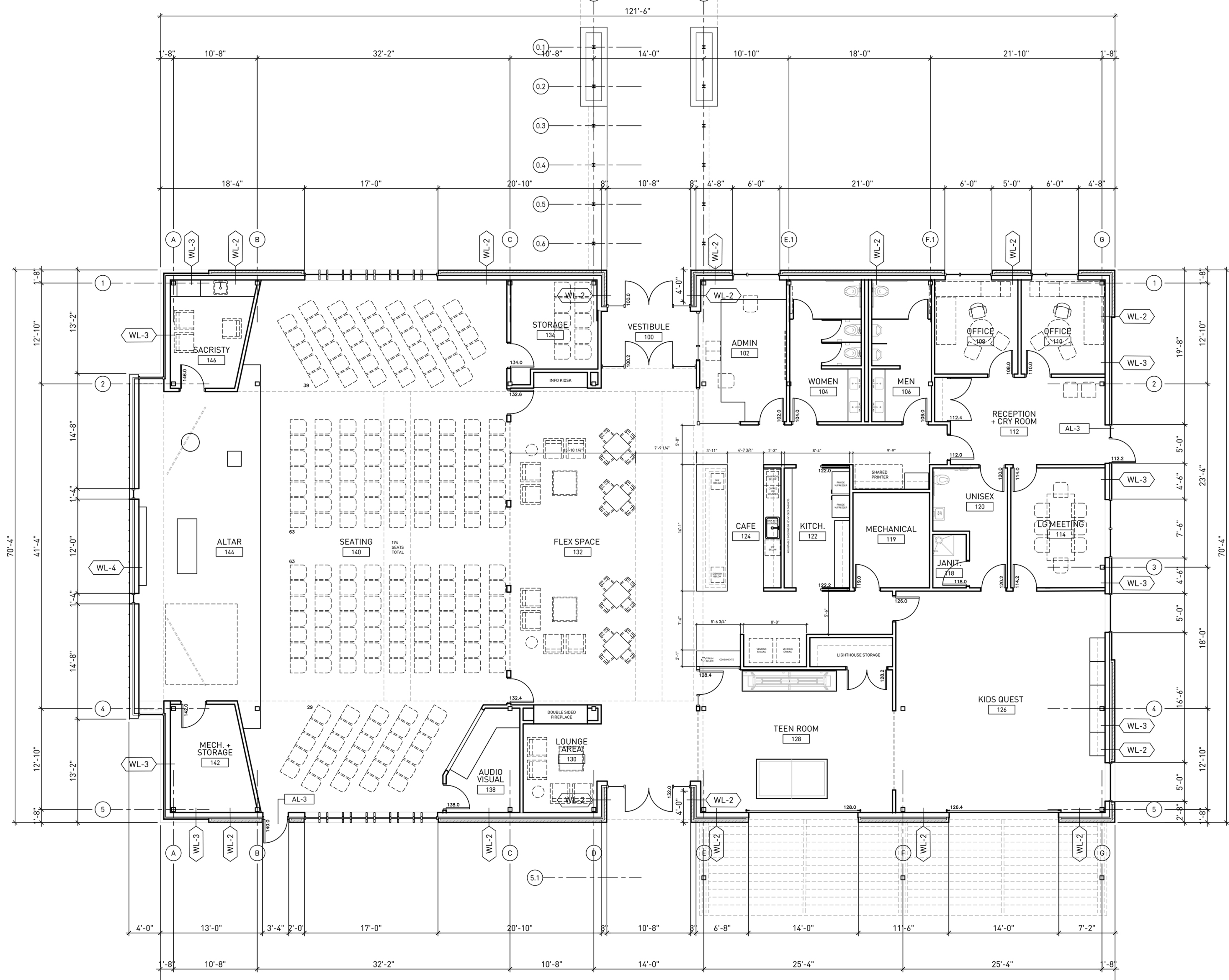


TREDO GROUP

219 N MILWAUKEE ST  
SUITE 630  
MILWAUKEE WISCONSIN  
53202

(414) 539 3336

TREDOGROUP.COM



PROJECT NAME  
**LIVING WORD**  
XXX XXXXXXXXXXXX  
WAUKESHA  
WISCONSIN 5XXXX

DRAWING ISSUE HISTORY  
DD xx-xx-2018 BIDDING DOCUMENTS

SET TYPE  
DD BID SET

AA PROJECT NUMBER  
XXXXXX

DATE  
06-13-2018

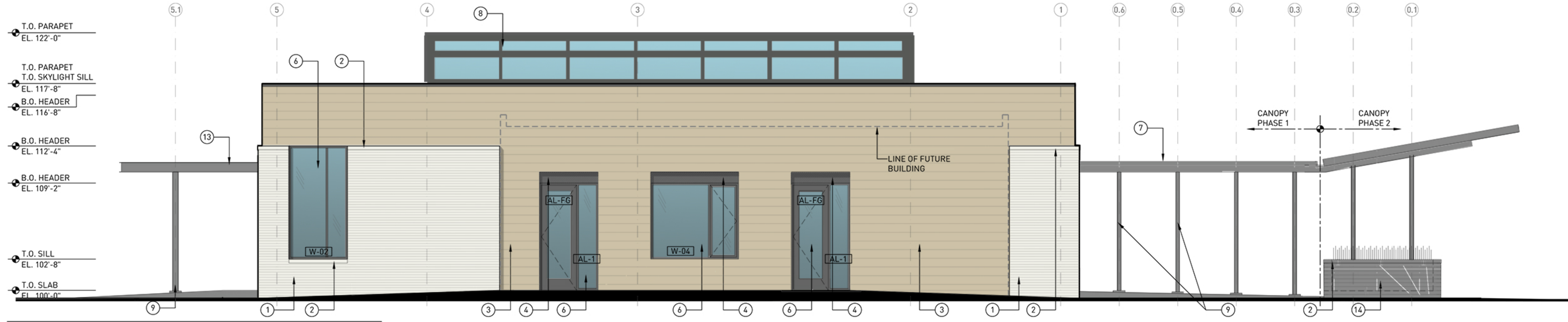
SHEET TITLE  
FLOOR PLAN

SHEET NUMBER

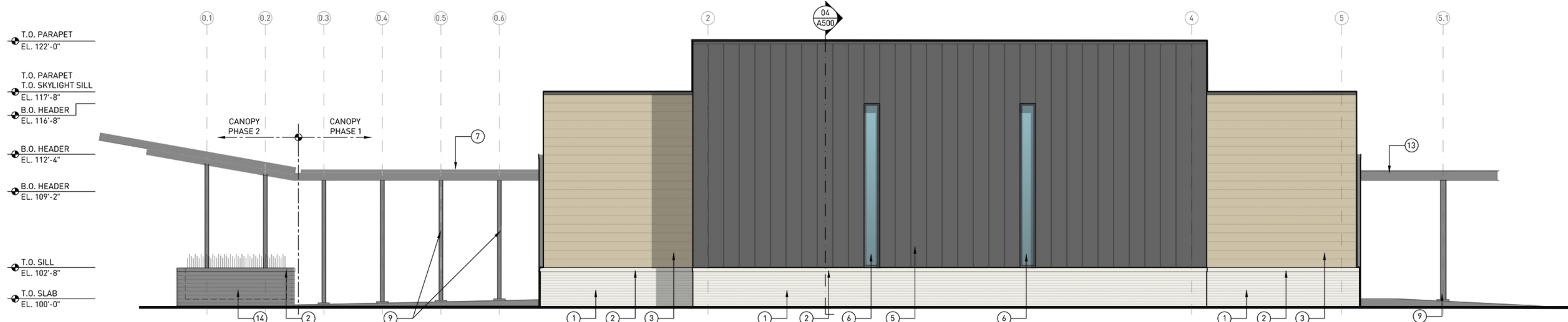
**A 100**

**EXTERIOR ELEVATION KEYNOTES**

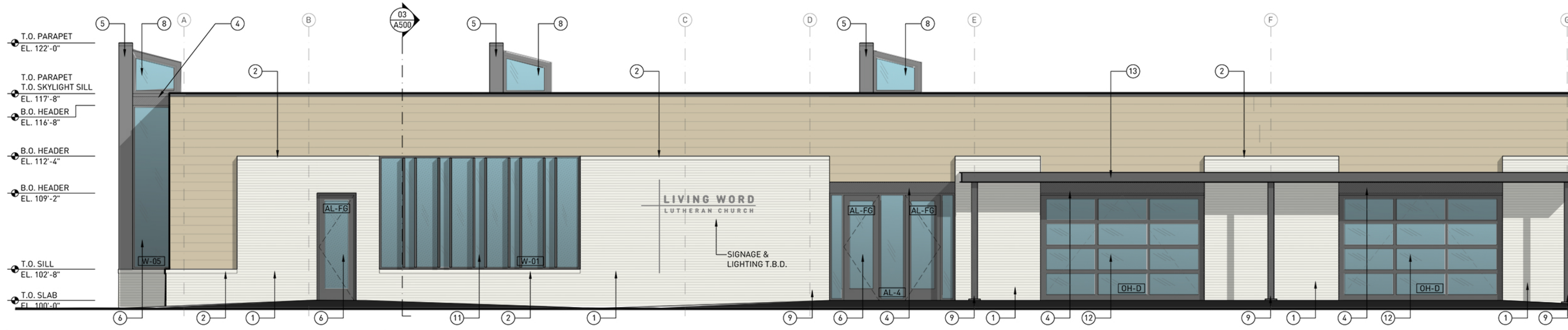
1. MODULAR BRICK VENEER
2. DECORATIVE CONCRETE MASONRY SILL / CORNICE
3. POLY-ASH SIDING
4. POLY-ASH WINDOW HEAD TRIM
5. DOUBLE-LOCK STANDING SEAM ZINC SIDING
6. ALUMINUM STOREFRONT SYSTEM
7. METAL CANOPY FASCIA
8. SKYLIGHT
9. STEEL COLUMN - PAINTED
10. FLUSH COMPOSITE WOOD SIDING
11. ALUMINUM STOREFRONT SYSTEM W/ VERTICAL FINS
12. ALUMINUM GARAGE DOOR SYSTEM
13. STEEL TRELLIS CANOPY
14. MODULAR BRICK VENEER PLANTER WALL



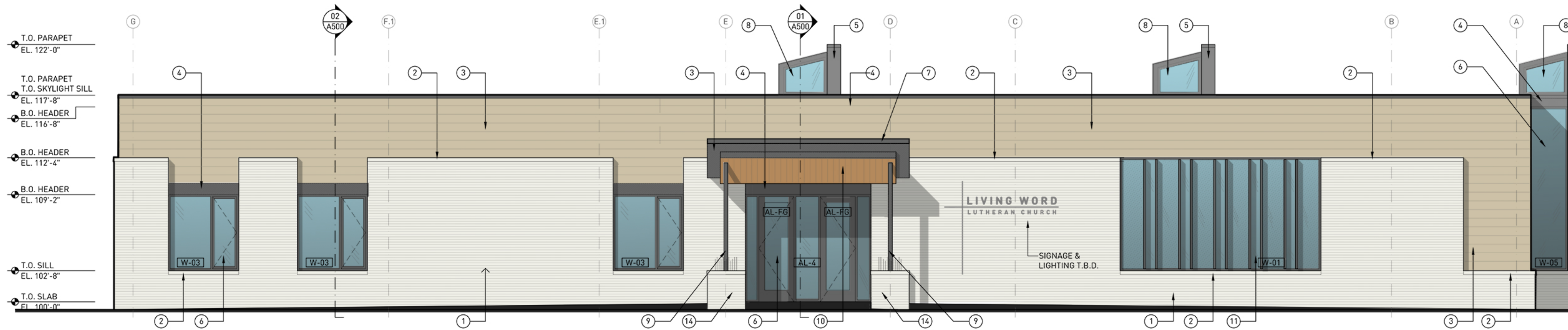
**04 NORTH EXTERIOR ELEVATION** SCALE - 3/16" = 1'-0"



**03 SOUTH EXTERIOR ELEVATION** SCALE - 3/16" = 1'-0"



**02 EAST EXTERIOR ELEVATION** SCALE - 3/16" = 1'-0"



**01 WEST EXTERIOR ELEVATION** SCALE - 3/16" = 1'-0"



**TREDO GROUP**  
 219 N MILWAUKEE ST  
 SUITE 630  
 MILWAUKEE WISCONSIN  
 53202  
 (414) 539 3336  
 TREDOGROUP.COM

PROJECT NAME  
**LIVING WORD**  
 XXXXXXXXXXXXXXX  
 WAUKESHA  
 WISCONSIN 5XXXX

DRAWING ISSUE HISTORY  
 DD xx-xx-2018 BIDDING DOCUMENTS

SET TYPE  
 DD BID SET

AA PROJECT NUMBER  
 XXXXXX

DATE  
 06-13-2018

SHEET TITLE  
 EXTERIOR ELEVATIONS

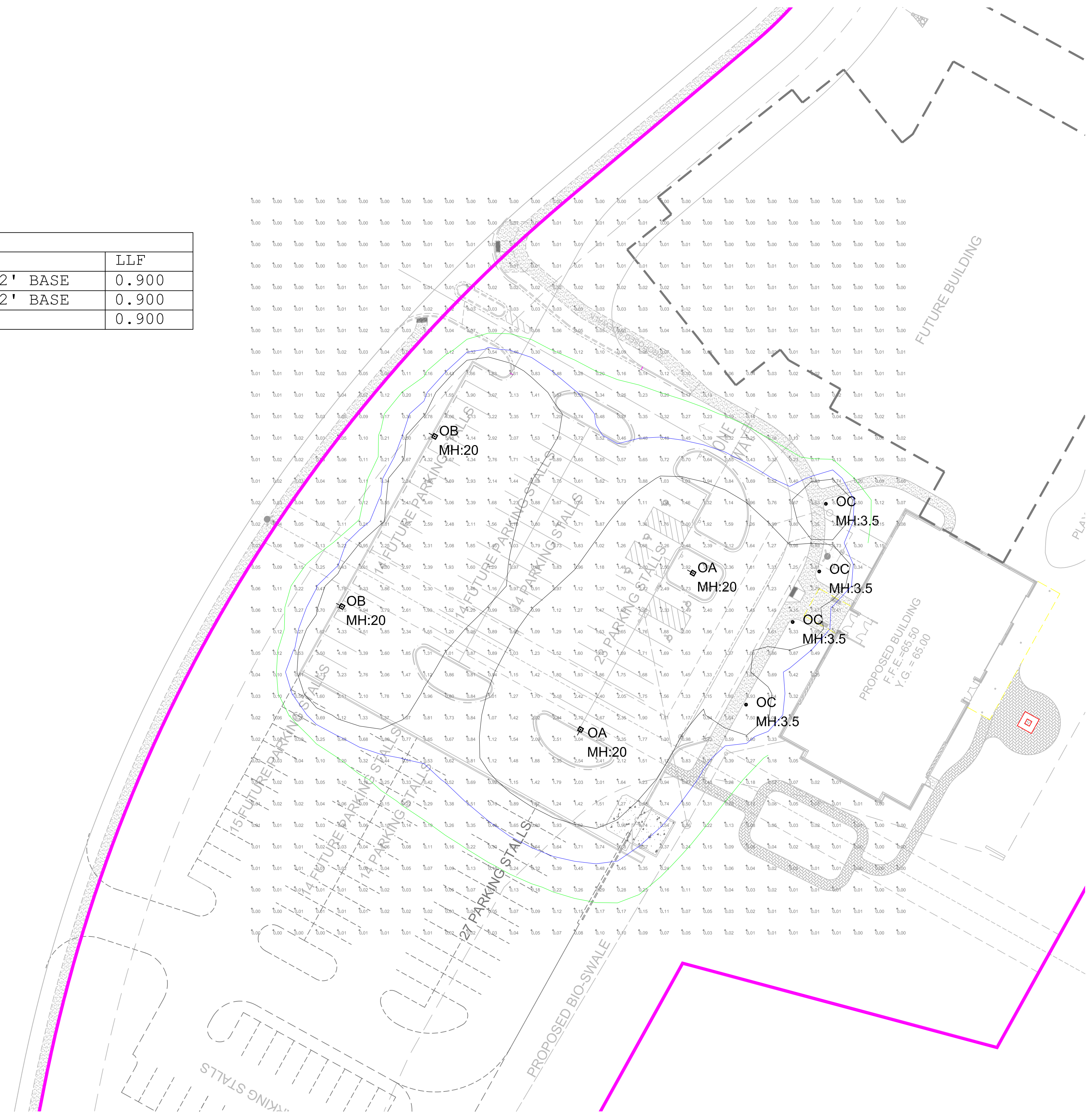
SHEET NUMBER

**A400**

# SIGHT LIGHTING PLAN CALCS

Luminaire Schedule				
Qty	Label	Manufacturer	Description	LLF
2	OA	McGraw-Edison	GLEON-AF-03-LED-E1-5WQ + 18' POLE + 2' BASE	0.900
2	OB	McGraw-Edison	GLEON-AF-03-LED-E1-SL4 + 18' POLE + 2' BASE	0.900
4	OC	Cree	PWY-EDG-5M-P4-02-E-UL-xx-350-40K	0.900

Calculation Summary					
Label	Avg	Max	Min	Avg/Min	Max/Min
Parking Lot	1.79	5.2	0.5	3.58	10.40



## Cree Edge™ Series

LED Pathway Luminaire

### Product Description

Durable die-cast aluminum luminaire housing mounts directly to 4" (102mm) diameter pole (included) without visible mounting hardware for clean appearance. Pole mounts to rugged die cast aluminum internal flange secured by three 3/8" - 16x6" anchor bolts with 1-1/4" hook (provided). **Note:** T45 Torx 3/8" socket required for head installation. Top mounted LEDs for superior optical performance and light control.

**Applications:** Landscape, walk-ways and general site lighting

### Performance Summary

Patented NanoOptic® Product Technology

Made in the U.S.A. of U.S. and imported parts

**CRI:** Minimum 70 CRI

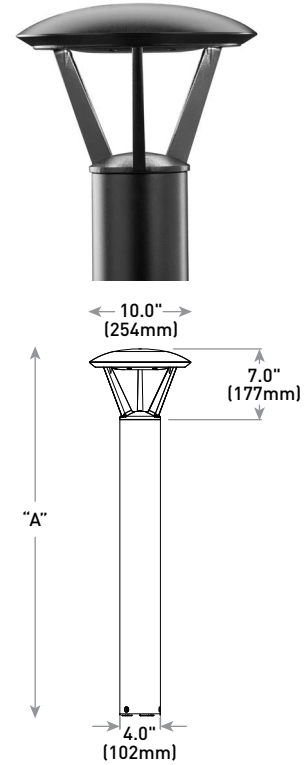
**CCT:** 4000K (+/- 300K), 5700K (+/- 500K) standard

**Limited Warranty\*:** 10 years on luminaire/10 years on Colorfast DeltaGuard® finish

\*See <http://lighting.cree.com/warranty> for warranty terms

### Accessories

Field-Installed
<b>Upgrade Kit</b> - Used for replacement of existing bollards with a bolt hole circle of 5.75" (146mm) XA-XBP8RSV      XA-XBP8RWH XA-XBP8RBK      XA-XBP8RBZ



Model	Dim. "A"	Weight*
Landscape (P0)	13" (330mm)	12.7 lbs. (5.8kg)
Landscape (P1)	18" (457mm)	13.3 lbs. (6.0kg)
Pathway (P3)	36" (914mm)	17.9 lbs. (8.1kg)
Pathway (P4)	42" (1068mm)	18.6 lbs. (8.4kg)
Pedestrian (P8)	96" (2438mm)	28.4 lbs (12.9kg)

\* Add 4.5 lbs. (2.0kg) for 347-480V

### Ordering Information

Example: PWY-EDG-2M-P0-02-E-UL-SV-350

PWY-EDG			02	E				
Product	Optic	Mounting	LED Count (x9)	Series	Voltage	Color Options	Drive Current	Options
PWY-EDG	<b>2M</b> Type II Medium <b>3M</b> Type III Medium <b>5M</b> Type V Medium <b>5S</b> Type V Short	<b>P0</b> 13" (330mm) landscape <b>P1</b> 18" (457mm) landscape <b>P3</b> 36" (914mm) pathway <b>P4</b> 42" (1067mm) pathway <b>P8</b> 96" (2438mm) pedestrian	02	E	<b>UL</b> Universal 120-277V <b>UH*</b> Universal 347-480V - Available with P3, P4, and P8 mounts only <b>12</b> 120V <b>27</b> 277V	<b>BK</b> Black <b>BZ</b> Bronze <b>SV</b> Silver <b>WH</b> White	<b>350</b> 350mA <b>525</b> 525mA - Available with P1, P3, P4, and P8 mounts only	<b>F Fuse</b> - When code dictates fusing, use time delay fuse - Refer to <a href="#">ML spec sheet</a> for availability with ML options <b>HL Hi/Low (Dual Circuit Input)</b> - Available with UL voltage and 525mA driver current only - Refer to <a href="#">HL spec sheet</a> for details - Sensor not included <b>TL Two-Level (175/525 w/integrated sensor control)</b> - Available with 12 or 27 voltages only - Refer to <a href="#">TL spec sheet</a> for details <b>TL2 Two-Level (0/350 w/integrated sensor control)</b> - Available with 12 or 27 voltages only - Refer to <a href="#">TL spec sheet</a> for details <b>TL3 Two-Level (0/525 w/integrated sensor control)</b> - Available with 12 or 27 voltages only - Refer to <a href="#">TL spec sheet</a> for details <b>WB Welded Base Plate</b> - Standard on P8 mount option, available with P3 and P4 mount - Includes welded base cover <b>40K 4000K Color Temperature</b> - Minimum 70 CRI - Color temperature per luminaire

\* 347-480V utilizes magnetic step-down transformer. For input power for 347-480V, refer to the Electrical Data table



Rev. Date: V5 08/11/2016



# LIGHT BOLLARD

## Cree Edge™ LED Pathway Luminaire

### Product Specifications

#### CONSTRUCTION & MATERIALS

- Durable die-cast aluminum luminaire housing mounts directly to 4" (102mm) diameter pole (included) without visible mounting hardware for clean appearance
- Pole mounts to rugged die cast aluminum internal flange secured by three 3/8"-16x6" anchor bolts with 1-1/4" hook (provided).  
**Note:** T45 Torx 3/8" socket required for head installation
- Top mounted LEDs for superior optical performance and light control
- Exclusive Colorfast DeltaGuard® finish features an E-Coat epoxy primer with an ultradurable powder topcoat, providing excellent resistance to corrosion, ultraviolet degradation and abrasion. Black, bronze, silver and white are available
- **Weight:** See Dimension and Weight Chart on pages 1 and 4

#### ELECTRICAL SYSTEM

- **Input Voltage:** 120-277V or 347-480V, 50/60Hz, Class 1 drivers
- **Power Factor:** > 0.9 at full load at 120V
- **Total Harmonic Distortion:** < 20% at full load at 120V
- Integral 10kV surge suppression protection standard
- When code dictates fusing, a slow blow fuse or type C/D breaker should be used to address inrush current

#### REGULATORY & VOLUNTARY QUALIFICATIONS

- cULus Listed
- Suitable for wet locations
- 10kV surge suppression protection tested in accordance with IEEE/ANSI C62.41.2
- Luminaire and finish endurance tested to withstand 5,000 hours of elevated ambient salt fog conditions as defined in ASTM Standard B 117
- Meets Buy American requirements within ARRA
- RoHS compliant. Consult factory for additional details

Electrical Data* (A)								
LED Count (x9)	System Watts 120-277V	System Watts 347-480V	Total Current					
			120V	208V	240V	277V	347V	480V
350mA								
02	22	28	0.18	0.12	0.10	0.10	0.09	0.13
525mA								
02	34	40	0.29	0.19	0.17	0.15	0.12	0.13

\* Electrical data at 25°C (77°F). Actual wattage may differ by +/- 10% when operating between 120-480V +/- 10%

Recommended Cree Edge™ Series Lumen Maintenance Factors (LMF) <sup>1</sup>					
Ambient	Initial LMF	25K hr Projected <sup>2</sup> LMF	50K hr Projected <sup>2</sup> LMF	75K hr Calculated <sup>3</sup> LMF	100K hr Calculated <sup>3</sup> LMF
5°C (41°F)	1.04	0.99	0.97	0.95	0.93
10°C (50°F)	1.03	0.98	0.96	0.94	0.92
15°C (59°F)	1.02	0.97	0.95	0.93	0.91
20°C (68°F)	1.01	0.96	0.94	0.92	0.90
25°C (77°F)	1.00	0.95	0.93	0.91	0.89

<sup>1</sup> Lumen maintenance values at 25°C are calculated per TM-21 based on LM-80 data and in-situ luminaire testing

<sup>2</sup> In accordance with IESNA TM-21-11, Projected Values represent interpolated value based on time durations that are within six times (6X) the IESNA LM-80-08 total test duration (in hours) for the device under testing ((DUT) i.e. the packaged LED chip)

<sup>3</sup> In accordance with IESNA TM-21-11, Calculated Values represent time durations that exceed six times (6X) the IESNA LM-80-08 total test duration (in hours) for the device under testing ((DUT) i.e. the packaged LED chip)

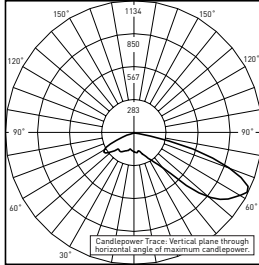
# LIGHT BOLLARD

Cree Edge™ LED Pathway Luminaire

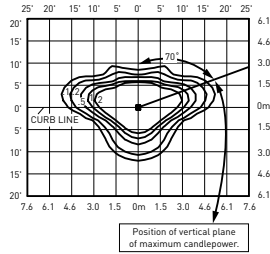
## Photometry

All published luminaire photometric testing performed to IESNA LM-79-08 standards by a NVLAP accredited laboratory. To obtain an IES file specific to your project consult: <http://lighting.cree.com/products/outdoor/bollards-and-pathway/cree-edge-pathway>

### 2M



RESTL Test Report #: PL5758-001  
 PWY-EDG-2M-\*\*-02-E-UL-350-40K  
 Initial Delivered Lumens: 1,549



PWY-EDG-2M-\*\*-02-E-UL-350-40K  
 Mounting Height: 3' [0.9m] A.F.G.  
 Initial Delivered Lumens: 1,565  
 Initial FC at grade

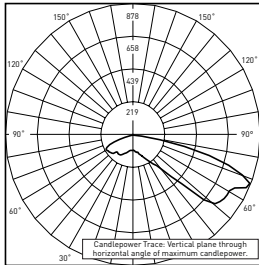
### Type II Medium Distribution

LED Count (x9)	4000K		5700K	
	Initial Delivered Lumens*	BUG Ratings** Per TM-15-11	Initial Delivered Lumens*	BUG Ratings** Per TM-15-11
<b>350mA</b>				
02	1,565	B1 U0 G1	1,625	B1 U0 G1
<b>525mA</b>				
02	2,191	B1 U0 G1	2,276	B1 U0 G1

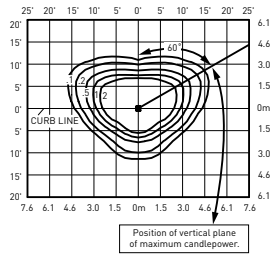
\* Initial delivered lumens at 25°C (77°F). Actual production yield may vary between -10 and +10% of initial delivered lumens

\*\* For more information on the IES BUG (Backlight-Uplight-Glare) Rating visit: [www.ies.org/PDF/Erratas/TM-15-11BugRatingsAddendum.pdf](http://www.ies.org/PDF/Erratas/TM-15-11BugRatingsAddendum.pdf)

### 3M



RESTL Test Report #: PL5698-001  
 PWY-EDG-3M-\*\*-02-E-UL-350-40K  
 Initial Delivered Lumens: 1,470



PWY-EDG-3M-\*\*-02-E-UL-350-40K  
 Mounting Height: 3' [0.9m] A.F.G.  
 Initial Delivered Lumens: 1,389  
 Initial FC at grade

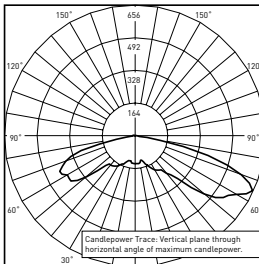
### Type III Medium Distribution

LED Count (x9)	4000K		5700K	
	Initial Delivered Lumens*	BUG Ratings** Per TM-15-11	Initial Delivered Lumens*	BUG Ratings** Per TM-15-11
<b>350mA</b>				
02	1,389	B1 U0 G1	1,442	B1 U0 G1
<b>525mA</b>				
02	1,944	B1 U0 G1	2,019	B1 U0 G1

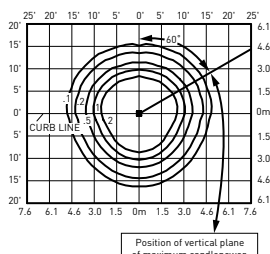
\* Initial delivered lumens at 25°C (77°F). Actual production yield may vary between -10 and +10% of initial delivered lumens

\*\* For more information on the IES BUG (Backlight-Uplight-Glare) Rating visit: [www.ies.org/PDF/Erratas/TM-15-11BugRatingsAddendum.pdf](http://www.ies.org/PDF/Erratas/TM-15-11BugRatingsAddendum.pdf)

### 5M



RESTL Test Report #: PL5798-001  
 PWY-EDG-5M-\*\*-02-E-UL-350-40K  
 Initial Delivered Lumens: 1,780



PWY-EDG-5M-\*\*-02-E-UL-350-40K  
 Mounting Height: 3' [0.9m] A.F.G.  
 Initial Delivered Lumens: 1,666  
 Initial FC at grade

### Type V Medium Distribution

LED Count (x9)	4000K		5700K	
	Initial Delivered Lumens*	BUG Ratings** Per TM-15-11	Initial Delivered Lumens*	BUG Ratings** Per TM-15-11
<b>350mA</b>				
02	1,666	B1 U2 G1	1,730	B1 U2 G1
<b>525mA</b>				
02	2,333	B2 U2 G2	2,422	B2 U2 G2

\* Initial delivered lumens at 25°C (77°F). Actual production yield may vary between -10 and +10% of initial delivered lumens

\*\* For more information on the IES BUG (Backlight-Uplight-Glare) Rating visit: [www.ies.org/PDF/Erratas/TM-15-11BugRatingsAddendum.pdf](http://www.ies.org/PDF/Erratas/TM-15-11BugRatingsAddendum.pdf)

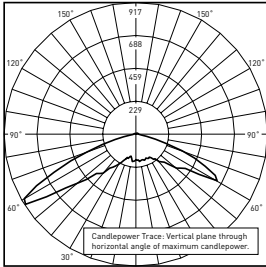
# LIGHT BOLLARD

## Cree Edge™ LED Pathway Luminaire

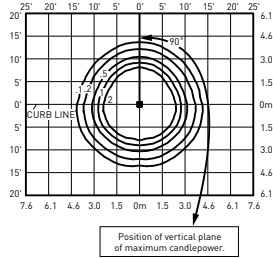
### Photometry

All published luminaire photometric testing performed to IESNA LM-79-08 standards by a NVLAP accredited laboratory. To obtain an IES file specific to your project consult: <http://lighting.cree.com/products/outdoor/bollards-and-pathway/cree-edge-pathway>

55



RESTL Test Report #: PL5759-001  
PWY-EDG-5S-\*\*-02-E-UL-350-40K  
Initial Delivered Lumens: 1,897



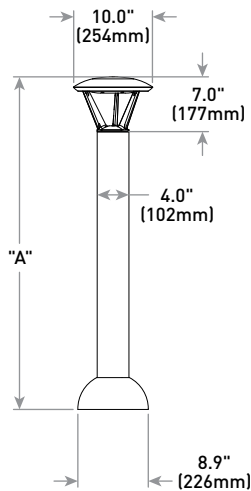
PWY-EDG-5S-\*\*-02-E-UL-350-40K  
Mounting Height: 3' [0.9m] A.F.G.  
Initial Delivered Lumens: 1,868  
Initial FC at grade

Type V Short Distribution				
LED Count (x9)	4000K		5700K	
	Initial Delivered Lumens*	BUG Ratings** Per TM-15-11	Initial Delivered Lumens*	BUG Ratings** Per TM-15-11
350mA				
02	1,868	B1 U2 G1	1,940	B1 U2 G1
525mA				
02	2,615	B1 U2 G1	2,716	B1 U2 G1

\* Initial delivered lumens at 25°C (77°F). Actual production yield may vary between -10 and +10% of initial delivered lumens

\*\* For more information on the IES BUG (Backlight-Uplight-Glare) Rating visit: [www.ies.org/PDF/Erratas/TM-15-11BugRatingsAddendum.pdf](http://www.ies.org/PDF/Erratas/TM-15-11BugRatingsAddendum.pdf)

### with Welded Base



Model	Dim. "A"	Weight*
Pathway (P3)	36" [914mm]	17.9 lbs. [8.1kg]
Pathway (P4)	42" [1068mm]	18.6 lbs. [8.4kg]
Pedestrian (P8)	96" [2438mm]	28.4 lbs [12.9kg]

\* Add 4.5 lbs. [2.0kg] for 347-480V

# LIGHT FIXTURE

# McGraw-Edison

## DESCRIPTION

The Galleon™ LED luminaire delivers exceptional performance in a highly scalable, low-profile design. Patented, high-efficiency AccuLED Optics™ system provides uniform and energy conscious illumination to walkways, parking lots, roadways, building areas and security lighting applications. IP66 rated and UL/cUL Listed for wet locations.

<b>Catalog #</b>		<b>Type</b>
<b>Project</b>		
<b>Comments</b>		<b>Date</b>
<b>Prepared by</b>		

## SPECIFICATION FEATURES

### Construction

Extruded aluminum driver enclosure thermally isolated from Light Squares for optimal thermal performance. Heavy-wall, die-cast aluminum end caps enclose housing and die-cast aluminum heat sinks. A unique, patent pending interlocking housing and heat sink provides scalability with superior structural rigidity. 3G vibration tested and rated. Optional tool-less hardware available for ease of entry into electrical chamber. Housing is IP66 rated.

### Optics

Patented, high-efficiency injection-molded AccuLED Optics technology. Optics are precisely designed to shape the distribution maximizing efficiency and application spacing. AccuLED Optics create consistent distributions with the scalability to meet customized application requirements. Offered standard in 4000K (+/- 275K) CCT 70 CRI. Optional 3000K, 5000K and 6000K CCT.

### Electrical

LED drivers are mounted to removable tray assembly for ease of maintenance. 120-277V 50/60Hz, 347V 60Hz or 480V 60Hz operation. 480V is compatible for use with 480V Wye systems only. Standard with 0-10V dimming. Shipped standard with Eaton proprietary circuit module designed to withstand 10kV of transient line surge. The Galleon LED luminaire is suitable for operation in -40°C to 40°C ambient environments. For applications with ambient temperatures exceeding 40°C, specify the HA (High Ambient) option. Light Squares are IP66 rated. Greater than 90% lumen maintenance expected at 60,000 hours. Available in standard 1A drive current and optional 600mA, 800mA and 1200mA drive currents (nominal).

### Mounting

**STANDARD ARM MOUNT:** Extruded aluminum arm includes internal bolt guides allowing for easy positioning of fixture during mounting. When mounting two or more luminaires at 90° and 120° apart, the EA extended arm may be required. Refer to the

arm mounting requirement table. Round pole adapter included. For wall mounting, specify wall mount bracket option. **QUICK MOUNT ARM:** Adapter is bolted directly to the pole. Quick mount arm slide into place on the adapter and is secured via two screws, facilitating quick and easy installation. The versatile, patent pending, quick mount arm accommodates multiple drill patterns ranging from 1-1/2" to 4-7/8". Removal of the door on the quick mount arm enables wiring of the fixture without having to access the driver compartment. A knock-out enables round pole mounting.

### Finish

Housing finished in super durable TGIC polyester powder coat paint, 2.5 mil nominal thickness for superior protection against fade and wear. Heat sink is powder coated black. Standard housing colors include black, bronze, grey, white, dark platinum and graphite metallic. RAL and custom color matches available.

### Warranty

Five-year warranty.

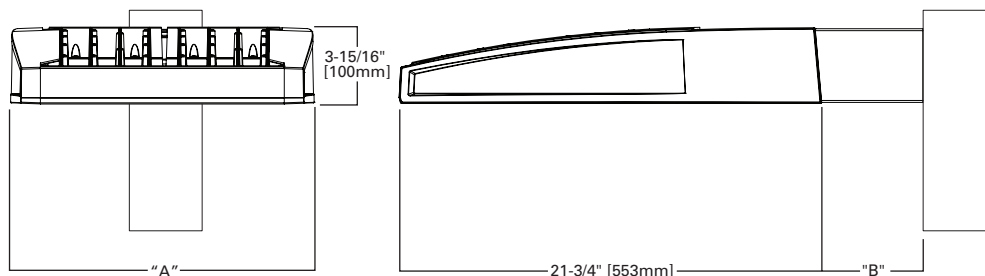


## GLEON GALLEON LED

1-10 Light Squares  
Solid State LED

AREA/SITE LUMINAIRE

## DIMENSIONS

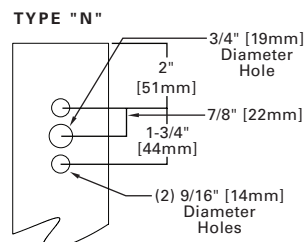


## DIMENSION DATA

Number of Light Squares	"A" Width	"B" Standard Arm Length	"B" Optional Arm Length <sup>1</sup>	Weight with Arm (lbs.)	EPA with Arm <sup>2</sup> (Sq. Ft.)
1-4	15-1/2" (394mm)	7" (178mm)	10" (254mm)	33 (15.0 kgs.)	0.96
5-6	21-5/8" (549mm)	7" (178mm)	10" (254mm)	44 (20.0 kgs.)	1.00
7-8	27-5/8" (702mm)	7" (178mm)	13" (330mm)	54 (24.5 kgs.)	1.07
9-10	33-3/4" (857mm)	7" (178mm)	16" (406mm)	63 (28.6 kgs.)	1.12

NOTES: 1. Optional arm length to be used when mounting two fixtures at 90° on a single pole. 2. EPA calculated with optional arm length.

## DRILLING PATTERN



## CERTIFICATION DATA

UL/cUL Wet Location Listed  
ISO 9001  
LM79 / LM80 Compliant  
3G Vibration Rated  
IP66 Rated  
DesignLights Consortium® Qualified\*

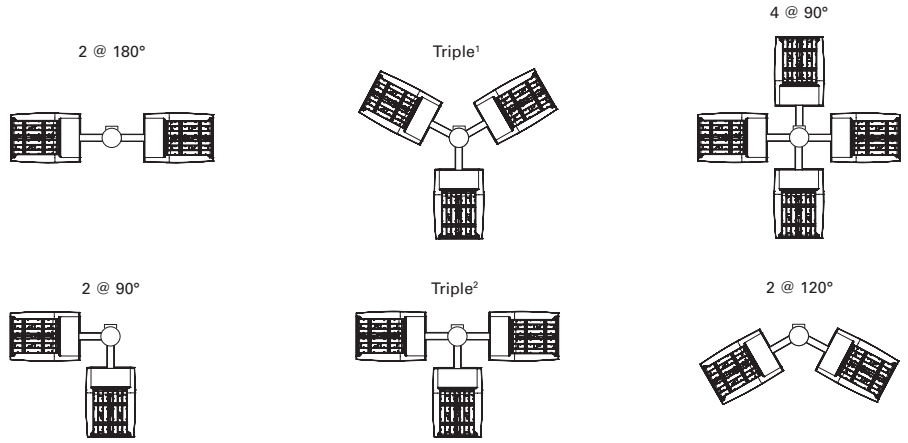
## ENERGY DATA

**Electronic LED Driver**  
>0.9 Power Factor  
<20% Total Harmonic Distortion  
120V-277V 50/60Hz  
347V & 480V 60Hz  
-40°C Min. Temperature  
40°C Max. Temperature  
50°C Max. Temperature (HA Option)



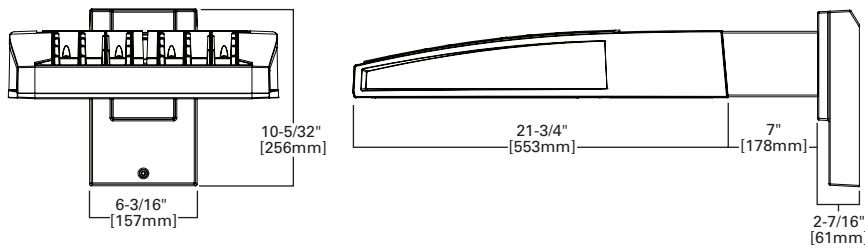
## ARM MOUNTING REQUIREMENTS

Configuration	90° Apart	120° Apart
GLEON-AF-01	7" Arm (Standard)	7" Arm (Standard)
GLEON-AF-02	7" Arm (Standard)	7" Arm (Standard)
GLEON-AF-03	7" Arm (Standard)	7" Arm (Standard)
GLEON-AF-04	7" Arm (Standard)	7" Arm (Standard)
GLEON-AF-05	10" Extended Arm (Required)	7" Arm (Standard)
GLEON-AF-06	10" Extended Arm (Required)	7" Arm (Standard)
GLEON-AF-07	13" Extended Arm (Required)	13" Extended Arm (Required)
GLEON-AF-08	13" Extended Arm (Required)	13" Extended Arm (Required)
GLEON-AF-09	16" Extended Arm (Required)	16" Extended Arm (Required)
GLEON-AF-10	16" Extended Arm (Required)	16" Extended Arm (Required)

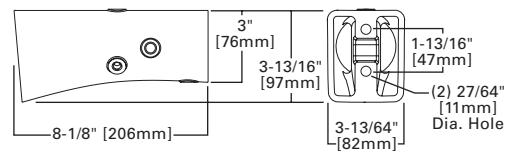


NOTES: 1 Round poles are 3 @ 120°. Square poles are 3 @ 90°. 2 Round poles are 3 @ 90°.

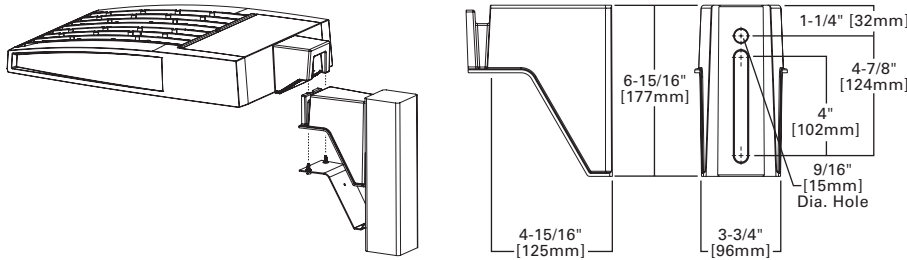
## STANDARD WALL MOUNT



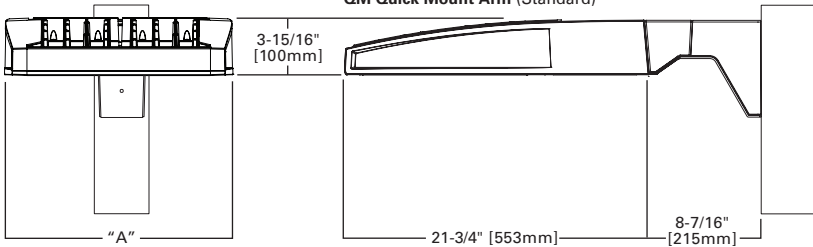
## MAST ARM MOUNT



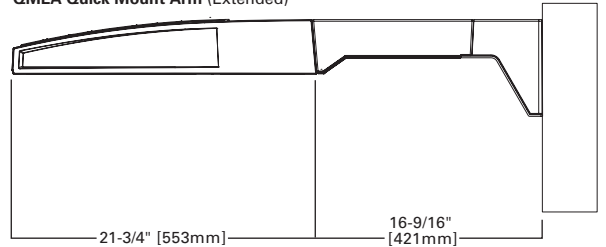
## QUICK MOUNT ARM (INCLUDES FIXTURE ADAPTER)



QM Quick Mount Arm (Standard)



QMEA Quick Mount Arm (Extended)

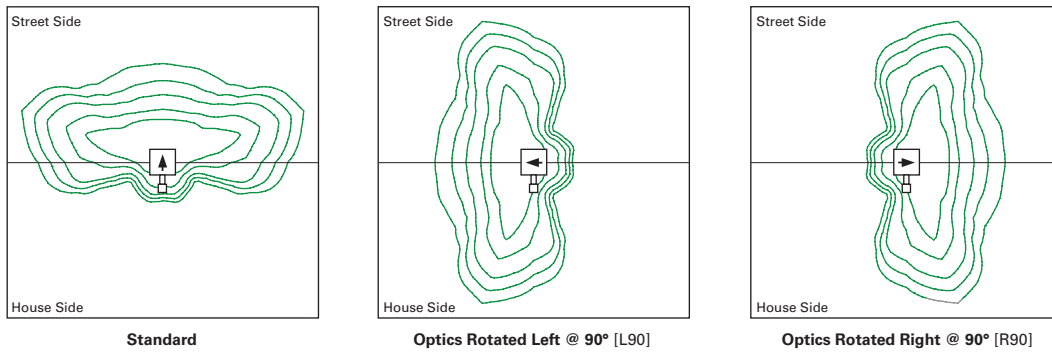


## QUICK MOUNT ARM DATA

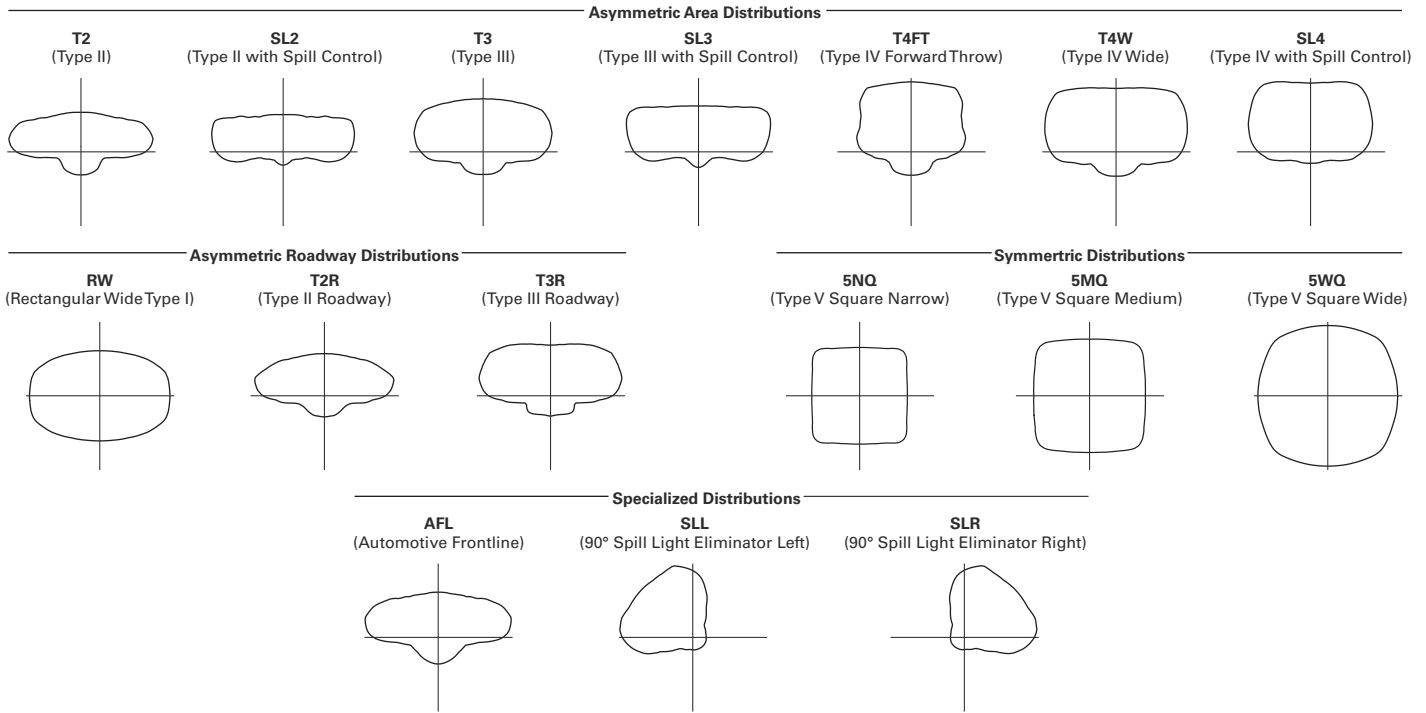
Number of Light Squares <sup>1,2</sup>	"A" Width	Weight with QM Arm (lbs.)	Weight with QMEA Arm (lbs.)	EPA (Sq. Ft.)
1-4	15-1/2" (394mm)	35 (15.91 kgs.)	38 (17.27 kgs.)	1.11
5-6 <sup>3</sup>	21-5/8" (549mm)	46 (20.91 kgs.)	49 (22.27 kgs.)	
7-8	27-5/8" (702mm)	56 (25.45 kgs.)	59 (26.82 kgs.)	

NOTES: 1 QM option available with 1-8 light square configurations. 2 QMEA option available with 1-6 light square configurations. 3 QMEA arm to be used when mounting two fixtures at 90° on a single pole.

## OPTIC ORIENTATION



## OPTICAL DISTRIBUTIONS

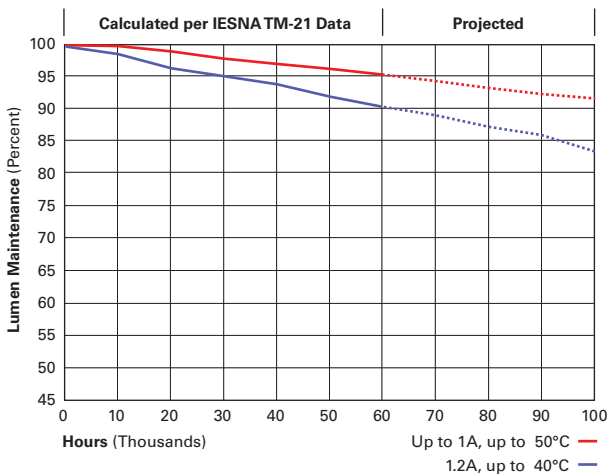


## LUMEN MAINTENANCE

Drive Current	Ambient Temperature	TM-21 Lumen Maintenance (60,000 Hours)	Projected L70 (Hours)
Up to 1A	Up to 50°C	> 95%	416,000
1.2A	Up to 40°C	> 90%	205,000

## LUMEN MULTIPLIER

Ambient Temperature	Lumen Multiplier
0°C	1.02
10°C	1.01
25°C	1.00
40°C	0.99
50°C	0.97



# POLE FOR LIGHT FIXTURE

# Steel Poles



## RTS ROUND TAPERED STEEL

Catalog #		Type
Project		
Comments		Date
Prepared by		

### FEATURES

- ASTM Grade steel base plate with ASTM A366 base cover
- Hand hole assembly 3" x 5" on RTS poles
- 20'-50' mounting heights
- Drilled or tenon (specify)

### DESIGN CONSIDERATIONS

Wind induced vibrations resulting from steady, unidirectional winds and other aerodynamic forces, as well as vibration and coefficient of height factors for non-grounded mounted installations (e.g., installations on bridges or buildings) are not included in this document. The information contained herein is for general guidance only and is not a replacement for professional judgement. Consult with a professional, and local and federal standards, before ordering to ensure product is appropriate for the intended purpose and installation location. Also, please review Eaton's Light Pole White Paper for risk factors and design considerations. [Learn more.](#)

Specifications and dimensions subject to change without notice. Consult your lighting representative at Eaton or visit [www.eaton.com/lighting](http://www.eaton.com/lighting) for available options, accessories and ordering information.

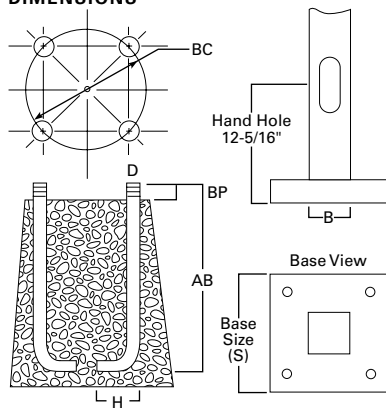
### ORDERING INFORMATION

SAMPLE NUMBER: RTS8A30SF2XXG

Product Family	Shaft Size (Inches) <sup>1</sup>	Wall Thickness (Inches)	Mounting Height (Feet)	Base Type	Finish	Mounting Type	Number and Location of Arms	Arm Lengths (Feet)	Options (Add as Suffix)
RTS=Round Tapered Steel	6=6" 7=7" 8=8" 9=9" 0=10"	A=0.120" D=0.180"	20=20' 25=25' 30=30' 35=35' 39=39' 45=45' 50=50'	S=Square Steel Base	F=Dark Bronze G=Galvanized Steel J=Summit White K=Carbon Bronze L=Dark Platinum R=Hartford Green S=Silver T=Graphite Metallic V=Grey W=White X=Custom Color Y=Black	2=2-3/8" O.D. Tenon (4" Long) 3=3-1/2" O.D. Tenon (5" Long) 4=4" O.D. Tenon (6" Long) 9=3" O.D. Tenon (4" Long) 6=2-3/8" O.D. Tenon (6" Long) 7=4" O.D. Tenon (10" Long) A=Type A Drilling C=Type C Drilling E=Type E Drilling F=Type F Drilling G=Type G Drilling J=Type J Drilling K=Type K Drilling M=Type M Drilling N=Type N Drilling R=Type R Drilling S=Standard Upsweep Arm Z=Type Z Drilling	1=Single 2=2 at 180° 3=Triple <sup>2</sup> 4=4 at 90° 5=2 at 90° 6=3 at 90° 7=2 at 120° X=None	X=None	A=1/2" Tapped Hub <sup>3</sup> B=3/4" Tapped Hub <sup>3</sup> C=Convenience Outlet <sup>4</sup> E=GFCI Convenience Outlet <sup>4</sup> G=Ground Lug H=Additional Hand Hole <sup>5</sup> V=Vibration Damper

NOTES: 1. All shaft sizes nominal. 2. Square poles are 3 at 90°, round poles are 3 at 120°. 3. Tapped Hub is located 5' below the pole top and on the same side of pole as hand hole, unless specified otherwise. 4. Outlet is located 4' above base and on same side of pole as hand hole, unless specified otherwise. Receptacle not included, provision only. 5. Additional hand hole is located 12" below pole top and 90° from standard hand hole location, unless otherwise specified.

### DIMENSIONS



# POLE FOR LIGHT FIXTURE

### Effective Projected Area (At Pole Top)

Mounting Height (Feet)	Catalog Number <sup>1,2</sup>	Wall Thickness (Inches)	Base Square <sup>3</sup> (Inches)	Bolt Circle Diameter (Inches)	Anchor Bolt Projection <sup>3</sup> (Inches)	Shaft Taper <sup>3</sup> (Inches)	Anchor Bolt Diameter x Length x Hook (Inches)	Net Weight (Pounds)	Maximum Effective Projected Area (Square Feet) <sup>4</sup>				Max. Fixture Load - Includes Bracket (Pounds)
									80 mph	90 mph	100 mph	110 mph	
<b>MH</b>			<b>S</b>	<b>BC</b>	<b>BP</b>	<b>B</b>	<b>D x AB x H</b>						
20	RTS6A20S	0.120	10-1/2	11	4-1/2	6.3 x 3.5	3/4 x 25 x 3	145	19.6	15.0	11.6	9.5	100
25	RTS7A25S	0.120	10-1/2	11	4-1/2	7.0 x 3.5	3/4 x 25 x 3	187	14.7	11.0	8.6	6.8	200
30	RTS8A30S	0.120	12-1/2	12-1/2	5	7.7 x 3.5	1 x 36 x 4	254	18.0	13.5	10.5	8.4	300
35	RTS8A35S	0.120	12-1/2	12-1/2	5	8.4 x 3.5	1 x 36 x 4	305	16.1	11.9	9.1	7.2	300
35	RTS9D35S	0.180	12-1/2	12-1/2	5	8.4 x 3.5	1 x 36 x 4	452	20.5	15.4	12.0	9.6	300
39	RTS9A39S	0.120	12-1/2	12-1/2	5	8.9 x 3.5	1 x 36 x 4	347	14.5	10.7	8.1	6.2	300
39	RTS9D39S	0.180	12-1/2	12-1/2	5	8.9 x 3.5	1 x 36 x 4	516	16.9	12.5	9.6	7.5	300
45	RTS0A45S <sup>5</sup>	0.120	13-1/2	13-1/2	5	10.2 x 4.2	1 x 36 x 4	466	14.5	10.1	7.7	5.8	300
45	RTS0D45S <sup>5</sup>	0.180	13-1/2	13-1/2	6	10.2 x 4.2	1-1/4 x 42 x 6	670	27.0	20.5	16.1	13.0	300
50	RTS0A50S <sup>5</sup>	0.120	13-1/2	13-1/2	5	10.2 x 3.5	1 x 36 x 4	490	7.4	4.9	3.3	2.2	400
50	RTS0D50S <sup>5</sup>	0.180	13-1/2	13-1/2	6	10.2 x 3.5	1-1/4 x 42 x 6	704	19.8	14.7	11.2	8.6	400

### Effective Projected Area (Two Feet Above Pole Top)

Mounting Height (Feet)	Catalog Number <sup>1,2</sup>	Wall Thickness (Inches)	Base Square <sup>3</sup> (Inches)	Bolt Circle Diameter (Inches)	Anchor Bolt Projection <sup>3</sup> (Inches)	Shaft Taper <sup>3</sup> (Inches)	Anchor Bolt Diameter x Length x Hook (Inches)	Net Weight (Pounds)	Maximum Effective Projected Area (Square Feet) <sup>4</sup>				Max. Fixture Load - Includes Bracket (Pounds)
									80 mph	90 mph	100 mph	110 mph	
<b>MH</b>			<b>S</b>	<b>BC</b>	<b>BP</b>	<b>B</b>	<b>D x AB x H</b>						
20	RTS6A20S	0.120	10-1/2	11	4-1/2	6.3 x 3.5	3/4 x 25 x 3	145	17.4	13.4	10.4	8.4	100
25	RTS7A25S	0.120	10-1/2	11	4-1/2	7.0 x 3.5	3/4 x 25 x 3	187	13.7	10.0	7.8	6.2	200
30	RTS8A30S	0.120	12-1/2	12-1/2	5	7.7 x 3.5	1 x 36 x 4	254	16.7	12.6	9.7	7.7	300
35	RTS8A35S	0.120	12-1/2	12-1/2	5	8.4 x 3.5	1 x 36 x 4	305	15.1	11.2	8.6	6.7	300
35	RTS9D35S	0.180	12-1/2	12-1/2	5	8.4 x 3.5	1 x 36 x 4	452	19.5	14.6	11.3	9.0	300
39	RTS9A39S	0.120	12-1/2	12-1/2	5	8.9 x 3.5	1 x 36 x 4	347	13.8	10.1	7.6	5.9	300
39	RTS9D39S	0.180	12-1/2	12-1/2	5	8.9 x 3.5	1 x 36 x 4	516	16.1	11.9	9.1	7.1	300
45	RTS0A45S <sup>5</sup>	0.120	13-1/2	13-1/2	5	10.2 x 4.2	1 x 36 x 4	466	13.2	9.8	7.3	5.6	300
45	RTS0D45S <sup>5</sup>	0.180	13-1/2	13-1/2	6	10.2 x 4.2	1-1/4 x 42 x 6	670	26.0	19.8	15.5	12.4	300
50	RTS0A50S <sup>5</sup>	0.120	13-1/2	13-1/2	5	10.2 x 3.5	1 x 36 x 4	490	7.1	4.7	3.7	2.1	400
50	RTS0D50S <sup>5</sup>	0.180	13-1/2	13-1/2	6	10.2 x 3.5	1-1/4 x 42 x 6	704	19.0	14.1	10.7	8.3	400

NOTES:

1. Catalog number includes pole with hardware kit. Anchor bolts not included. Before installing, make sure proper anchor bolts and templates are obtained.
2. Tenon size or machining for rectangular arms must be specified. Hand hole position relative to drill location.
3. Shaft size, base square, anchor bolts and projections may vary slightly. All dimensions nominal.
4. EPAs based on shaft properties with wind normal to flat. EPAs calculated using base wind velocity as indicated plus 30% gust factor.
5. Two-piece pole.