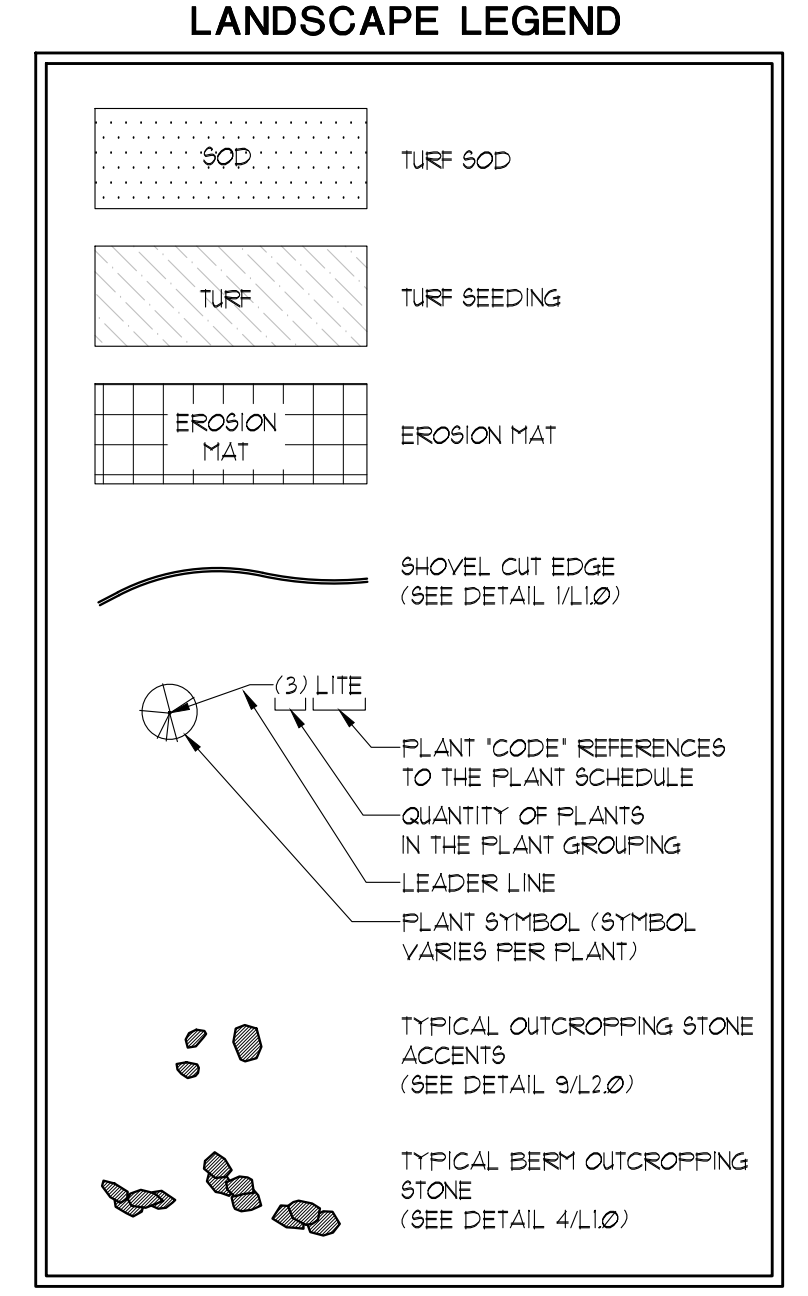
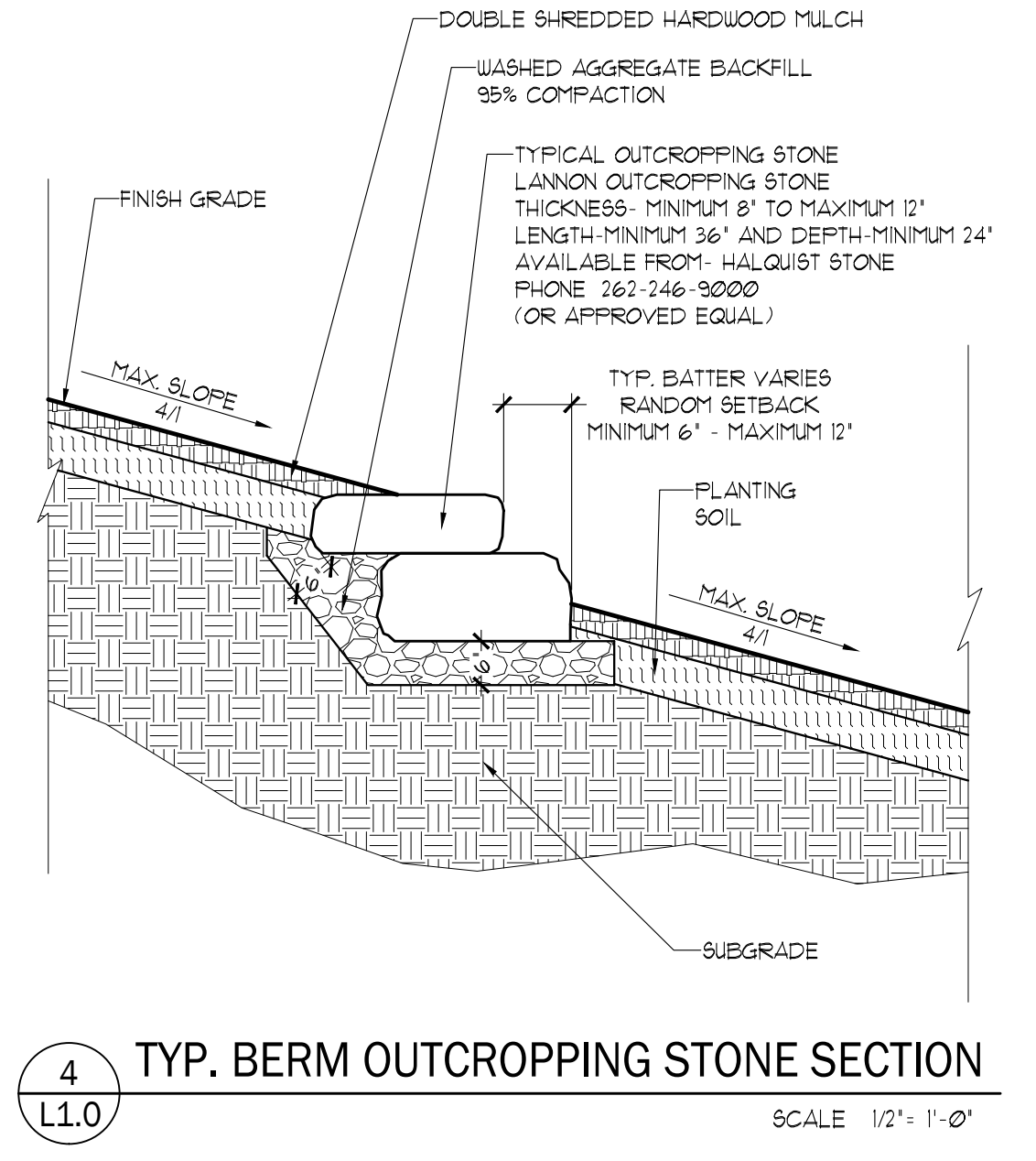
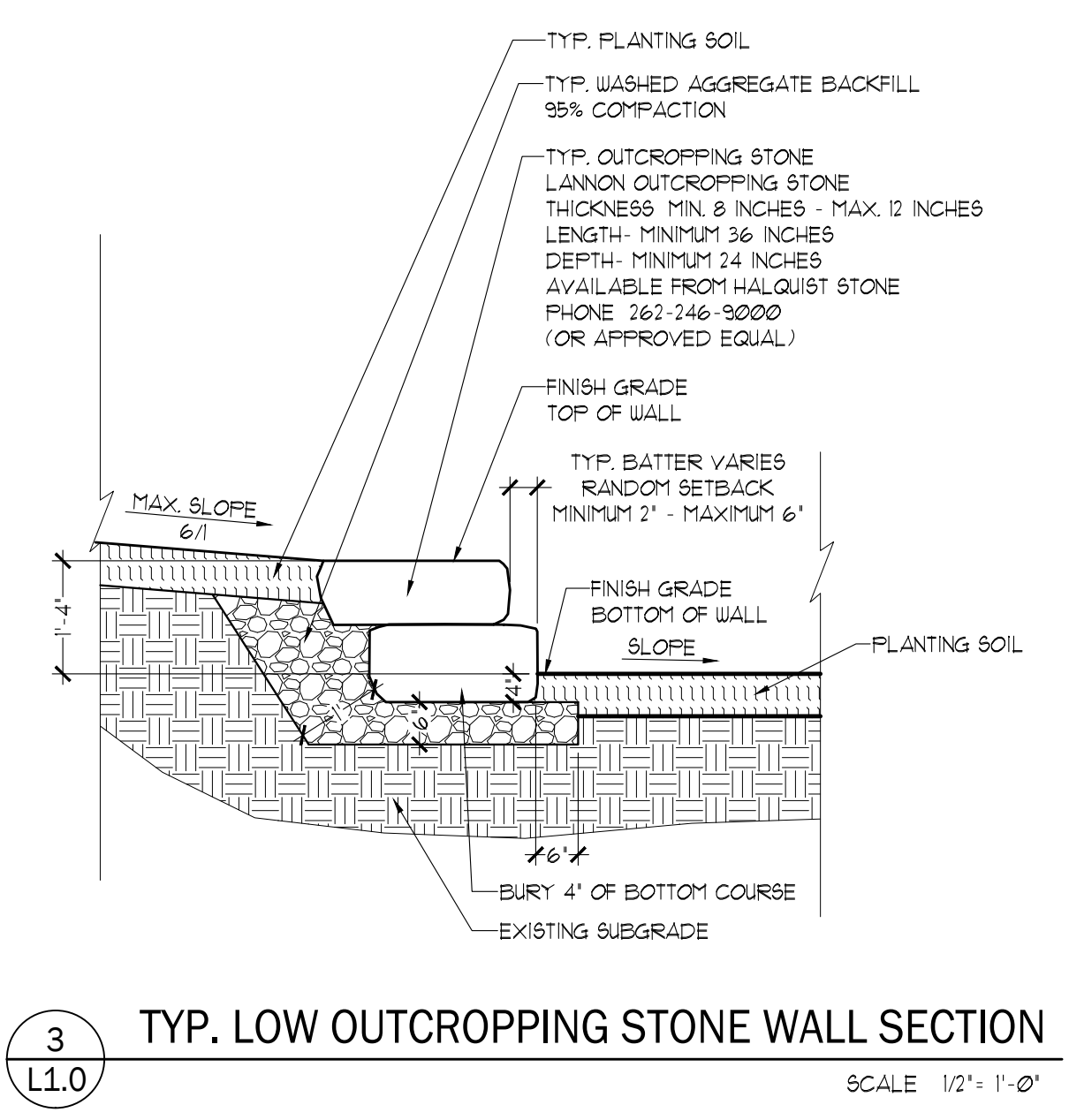
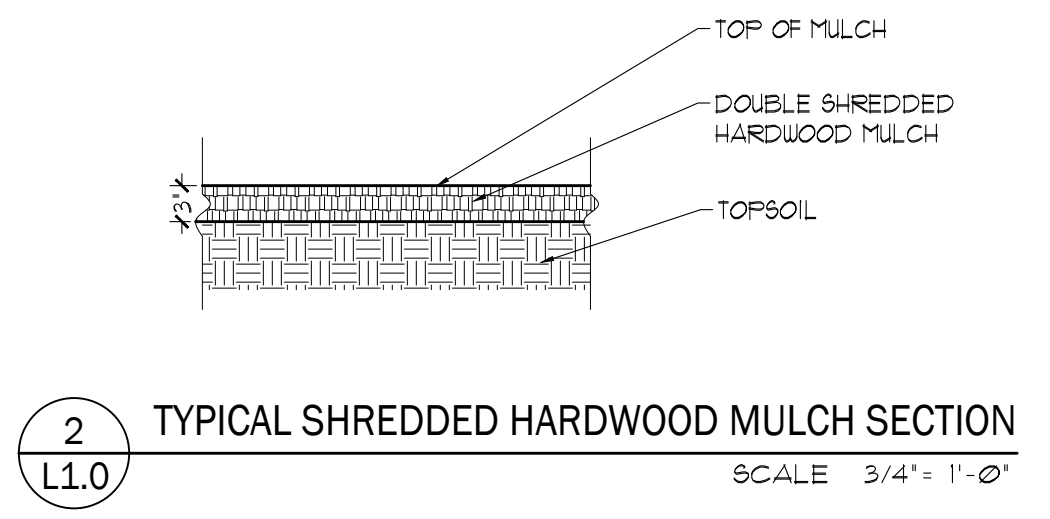
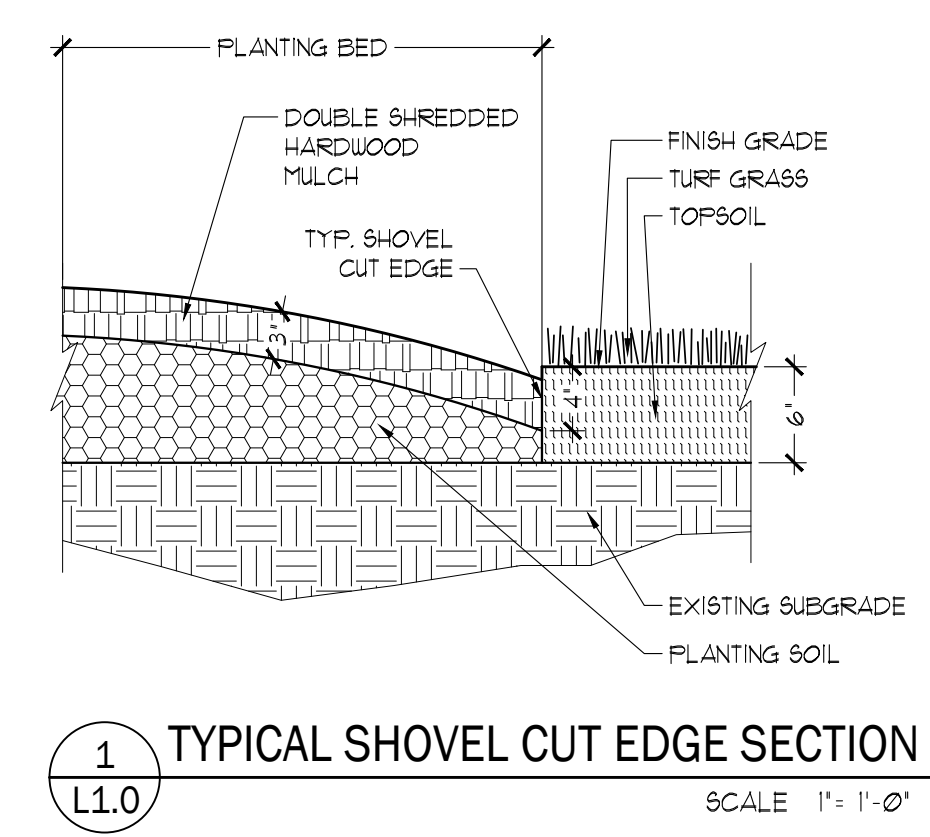


**GENERAL NOTES:**

1. LOCATE ALL PRIVATE AND PUBLIC UNDERGROUND UTILITIES PRIOR TO THE COMMENCEMENT OF ANY DIGGING/CLEARING OPERATIONS.
2. ALL FINISH GRADES TO BE ONE HALF INCH BELOW TOP OF CURBS AND PAVEMENT.
3. TYP. PLANTING BEDS TO A MINIMUM DEPTH OF 6 INCHES PRIOR TO PLANTING.
4. TOPRESS ALL PLANTING BEDS WITH 3 INCHES DOUBLE SHREDDED HARDWOOD MULCH. ALL PLANTING BEDS THAT ABUT LAWN SHALL HAVE A SHOVEL CUT EDGE.
5. ALL AREAS INDICATED AS 'SOD' SHALL BE SOED AS SPECIFIED. ALL AREAS INDICATED AS 'TURF' SHALL BE SEEDED AS SPECIFIED. ALL AREAS DISTURBED DURING CONSTRUCTION INCLUDING TRENCHING DISTURBANCE SHALL BE SOEDED OR TURF SEEDED. SEE CIVIL PLANS FOR APPROXIMATE LIMITS OF GRADING AND TRENCHING WORK.
6. PLANT QUANTITIES INDICATED IN THE PLANT SCHEDULE ARE FOR CONVENIENCE ONLY. PLANT QUANTITIES SHALL BE VERIFIED BY THE CONTRACTOR WHEN DISCREPANCIES BETWEEN THE SCHEDULE, LABELS AND THE PLAN OCCUR. THE QUANTITY DRAWN ON THE PLAN SHALL BE THE OFFICIAL QUANTITY.
7. REMOVE ALL EXISTING PLANTS, SOD, ROCKS, MULCH, DEBRIS, ETC. TO PERMIT THE INSTALLATION OF NEW PLANT MATERIAL.
8. TURF SEED THE LANDSCAPE AREA BETWEEN THE PROPERTY LINE AND EXISTING STREET WITHIN THE RIGHT-OF-WAY ADJACENT TO THE PROJECT SITE AS INDICATED. SEED SHALL MATCH THE PROPOSED SEED USED ON THE PROJECT SITE IN ORDER TO BLEND THE TWO AREAS SEAMLESSLY TOGETHER. INSTALL IN ACCORDANCE WITH MUNICIPAL REQUIREMENTS OF AUTHORITIES HAVING JURISDICTION OR ACCORDING TO THE LANDSCAPE SPECIFICATIONS IF THERE ARE NO MUNICIPAL REQUIREMENTS.
9. LIGHT POLES AND UNDERGROUND UTILITIES ARE SHOWN FOR CONVENIENCE. SEE SITE LIGHTING PLAN FOR OFFICIAL LIGHT POLE LOCATIONS AND CIVIL PLANS FOR OFFICIAL UNDERGROUND UTILITY LOCATIONS.
10. INSTALL THE SMITEX FENCE IN ACCORDANCE WITH THE MANUFACTURER'S WRITTEN INSTALLATION INSTRUCTIONS AND DETAILS.



**PARAGON DESIGN GROUP, LLC**

• SITE DESIGN •  
• LANDSCAPE ARCHITECTURE •  
• PLANNING •

2776 North Sholes Avenue  
Milwaukee, WI 53210  
Tel: 414.449.1555  
Fax: 414.449.2425  
www.paragondg.com

PROJECT NAME  
**COAST WASH EXPRESS - WAUKESHA**

PROJECT LOCATION  
S.T.H. 164 & ARCADIAN AVE.  
WAUKESHA, WI

CLIENT NAME & ADDRESS  
COAST WASH EXPRESS - WAUKESHA  
S.T.H. 164 & ARCADIAN AVE.  
WAUKESHA, WI

SHEET TITLE  
**LANDSCAPE PLAN**

REVISIONS

Date	By
8-18-2017 (ADD BERMS)	BJB
9-11-2017 (SITE REVIS.)	BJB

PROFESSIONAL SEAL



USE OF INFORMATION

THESE DRAWINGS, AS INSTRUMENTS OF SERVICE, REMAIN THE PROPERTY OF PARAGON DESIGN GROUP, LLC. ANY CHANGES, PUBLICATION OR UNAUTHORIZED USE IS PROHIBITED UNLESS EXPRESSLY APPROVED.

FILE NAME: Coast Wash LA

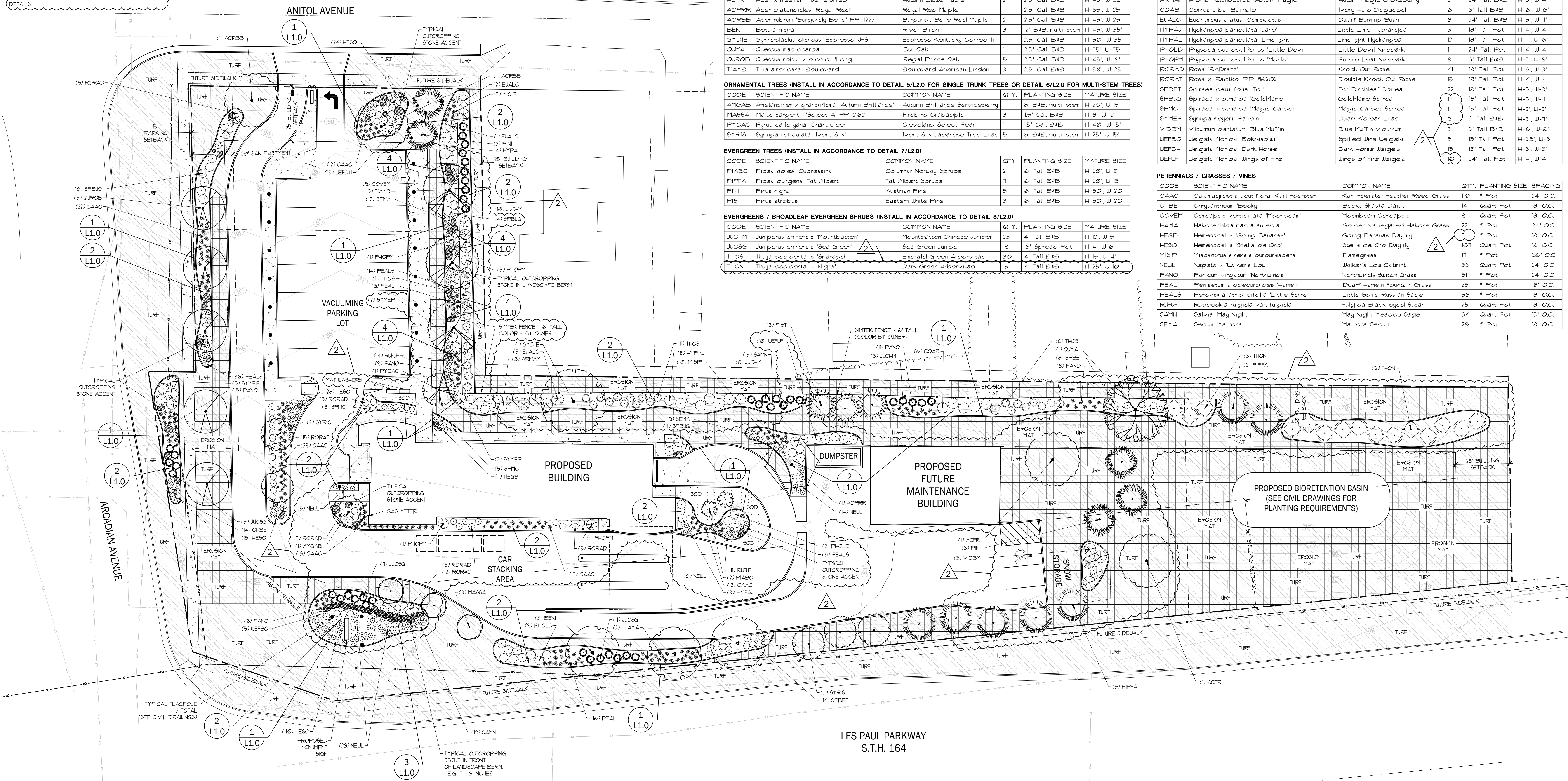
DRAWN BY: BJB

CHECKED BY: BJB

PDG PROJECT #: 16-700

DATE: 7-17-2017

SHEET NO.



**PLANT SCHEDULE**

**CANOPY TREES (INSTALL IN ACCORDANCE TO DETAIL 5/L1.0 FOR SINGLE TRUNK TREES OR DETAIL 6/L1.0 FOR MULTI-STEM TREES)**

CODE	SCIENTIFIC NAME	COMMON NAME	QTY.	PLANTING SIZE	MATURE SIZE
ACFR	Acer x freemanii 'Jefferspire'	Autumn Blaze Maple	2	2.5' Cal. Bx4B	H-45' W-30'
ACFR	Acer platanoides 'Royal Red'	Royal Red Maple	1	2.5' Cal. Bx4B	H-35' W-25'
ACRBB	Acer rubrum 'Burgundy Belle' PP 1222	Burgundy Belle Red Maple	2	2.5' Cal. Bx4B	H-45' W-25'
BENI	Besula nigra	River Birch	3	12' Bx4B, multi-stem	H-45' W-35'
GYDIE	Gymnocladus dioica 'Espresso-JF8'	Espresso Kentucky Coffee Tr.	1	2.5' Cal. Bx4B	H-50' W-25'
QUMA	Quercus macrocarpa	Bur Oak	1	2.5' Cal. Bx4B	H-75' W-75'
QUROB	Quercus robur x bicolor 'Long'	Regal Prince Oak	5	2.5' Cal. Bx4B	H-45' W-18'
TIAMB	Tilia americana 'Boulevarde'	Boulevarde American Linden	3	2.5' Cal. Bx4B	H-50' W-25'

**ORNAMENTAL TREES (INSTALL IN ACCORDANCE TO DETAIL 5/L1.0 FOR SINGLE TRUNK TREES OR DETAIL 6/L1.0 FOR MULTI-STEM TREES)**

CODE	SCIENTIFIC NAME	COMMON NAME	QTY.	PLANTING SIZE	MATURE SIZE
AMGAB	Amelanchier x grandiflora 'Autumn Brilliance'	Autumn Brilliance Serviceberry	1	8' Bx4B, multi-stem	H-20' W-15'
MASBA	Malus sargentii 'Select A' PP 12,621	Firebird Crabapple	3	1.5' Cal. Bx4B	H-8' W-12'
PYCAC	Pyrus calleryana 'Chanticleer'	Cleveland Select Pear	1	1.5' Cal. Bx4B	H-40' W-15'
SYRIS	Syringa reticulata 'Ivory Silk'	Ivory Silk Japanese Tree Lilac	5	8' Bx4B, multi-stem	H-25' W-15'

**EVERGREEN TREES (INSTALL IN ACCORDANCE TO DETAIL 7/L1.0)**

CODE	SCIENTIFIC NAME	COMMON NAME	QTY.	PLANTING SIZE	MATURE SIZE
PIABC	Picea abies 'Cupressina'	Columnar Norway Spruce	2	6' Tall Bx4B	H-20' W-8'
PIFFA	Picea pungens 'Fat Albert'	Fat Albert Spruce	7	6' Tall Bx4B	H-20' W-15'
FINI	Pinus nigra	Austrian Pine	5	6' Tall Bx4B	H-50' W-20'
PIST	Pinus strobus	Eastern White Pine	3	6' Tall Bx4B	H-50' W-20'

**EVERGREENS / BROADLEAF EVERGREEN SHRUBS (INSTALL IN ACCORDANCE TO DETAIL 8/L1.0)**

CODE	SCIENTIFIC NAME	COMMON NAME	QTY.	PLANTING SIZE	MATURE SIZE
JUCHM	Juniperus chinensis 'Mouribatten'	Mouribatten Chinese Juniper	23	4' Tall Bx4B	H-12' W-8'
JUCSG	Juniperus chinensis 'Sea Green'	Sea Green Juniper	19	18' Spread Pot	H-4' W-6'
THOS	Thuja occidentalis 'Emerald'	Emerald Green Arborvitae	30	4' Tall Bx4B	H-15' W-4'
THON	Thuja occidentalis 'Nigra'	Dark Green Arborvitae	15	4' Tall Bx4B	H-25' W-10'

**PERENNIALS / GRASSES / WINES**

CODE	SCIENTIFIC NAME	COMMON NAME	QTY.	PLANTING SIZE	SPACING
CAAC	Calamagrostis scutiflora 'Karl Foerster'	Karl Foerster Feather Reed Grass	10	4' Pot	24" O.C.
CHBE	Chrysanthemum 'Becky'	Becky Shasta Daisy	14	Quart. Pot	18" O.C.
COVEN	Cordaphis verticillata 'Moonbeam'	Moonbeam Cordaphis	9	Quart. Pot	18" O.C.
HAMA	Hakonechloa macra aureola	Golden Variegated Hakone Grass	22	4" Pot	24" O.C.
HEGB	Hemerocallis 'Going Bananas'	Going Bananas Daylily	1	4" Pot	18" O.C.
HESO	Hemerocallis 'Stella de Oro'	Stella de Oro Daylily	101	Quart. Pot	18" O.C.
MISIP	Miscanthus sinensis purpurascens	Flamegrass	11	4" Pot	36" O.C.
NEUL	Nepeta x Walker's Low	Walker's Low Catmint	53	Quart. Pot	24" O.C.
PANO	Panicum virgatum 'Northhills'	Northhills Switch Grass	51	4" Pot	24" O.C.
FEAL	Festuca elatior 'Hamel'	Dwarf Hamel Fountain Grass	25	4" Pot	18" O.C.
FEALS	Ferovkia striatifolia 'Little Spire'	Little Spire Russian Sage	58	4" Pot	18" O.C.
RUFUF	Rudbeckia fulgida var. fulgida	Fulgida Black-eyed Susan	25	Quart. Pot	18" O.C.
SB4N	Salvia 'May Night'	May Night Meadow Sage	34	Quart. Pot	15" O.C.
SEHA	Sedum 'Matrona'	Matrona Sedum	28	4" Pot	18" O.C.

**SHEET INDEX**

L1.0- LANDSCAPE PLAN  
L2.0- LANDSCAPE DETAILS  
SPECIFICATION SECTION 32 90 00- PLANTING

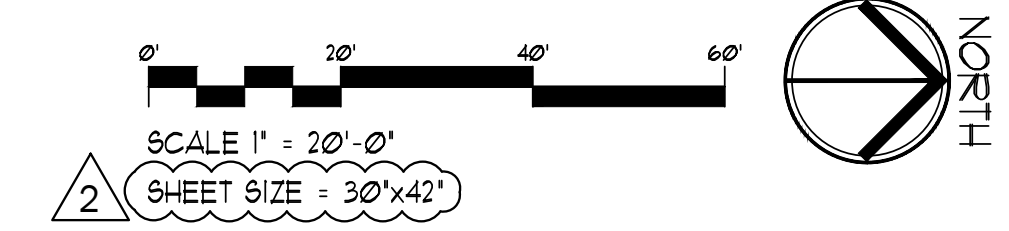
**CALL DIGGERS HOTLINE**  
1-800-242-8511  
TOLL FREE

WIS. STATUTE 182.0175(1974)  
REQUIRES MIN. OF 3 WORK DAYS  
NOTICE BEFORE YOU DIG.

**ABBREVIATIONS**

ABBREVIATION	FULL WORDS
Bx4B	Balled and burlapped
CAL	Caliper
DBH	Diameter at breast height (Approximately 4 ft above finish grade)
DIA	Diameter
EX	Existing
HTT	Height to tip
O.C.	On center
SQ. FT. or SF	Square feet
TYP.	Typical
TR	Tree

INFORMATION SHOWN ON THIS DRAWING IS BASED ON SURVEY AND CIVIL ENGINEERING DRAWINGS DEVELOPED BY JRT CONSULTING, LLC WITH A LATEST REVISED DATE OF 4-14-2017 THEREON AND UNDER A SEPARATE CONTRACT WITH THE OWNER. THE LANDSCAPE ARCHITECT MAKES NO WARRANTIES OR REPRESENTATIONS AS TO THE ACCURACY AND COMPLETENESS OF THE PLANS. ALL INFORMATION SHOWN ON THE DRAWINGS SHALL BE FIELD VERIFIED BY THE CONTRACTOR.



**L1.0**