

SURVEY FOR WAKC 1301968

# TOPOGRAPHIC MAP

KNOWN AS 1200 LENGTH AVENUE, CITY OF WINDSOR, WINDSOR COUNTY, MISSOURI  
 LOTS 1-08 OF CERTAIN QUARTY MAP NO. 7194, BEING PART OF THE NORTHEAST 1/4 OF THE SOUTHWEST 1/4 AND SOUTHWEST 1/4 OF THE  
 NORTHEAST 1/4 OF SECTION 2, TOWNSHIP 2 NORTH, RANGE 19 EAST, OF THE CITY OF WINDSOR, WINDSOR COUNTY, MISSOURI.  
 APRIL 29, 2009  
 MAY 11, 2011

**ANOKA AVE.**  
 60' PUBLIC R.O.W.

**MONITORING WELL TABLE - LOCATED FEBRUARY 15, 2009**

ID#	TOP OF B.M.A. ELEVATION	GROUND ELEVATION	DEPTH	DATE
1	851.0	851.0	0.0	2/15/09
2	852.0	852.0	0.0	2/15/09
3	853.0	853.0	0.0	2/15/09
4	854.0	854.0	0.0	2/15/09
5	855.0	855.0	0.0	2/15/09
6	856.0	856.0	0.0	2/15/09
7	857.0	857.0	0.0	2/15/09
8	858.0	858.0	0.0	2/15/09
9	859.0	859.0	0.0	2/15/09
10	860.0	860.0	0.0	2/15/09
11	861.0	861.0	0.0	2/15/09
12	862.0	862.0	0.0	2/15/09
13	863.0	863.0	0.0	2/15/09
14	864.0	864.0	0.0	2/15/09
15	865.0	865.0	0.0	2/15/09
16	866.0	866.0	0.0	2/15/09
17	867.0	867.0	0.0	2/15/09
18	868.0	868.0	0.0	2/15/09
19	869.0	869.0	0.0	2/15/09
20	870.0	870.0	0.0	2/15/09
21	871.0	871.0	0.0	2/15/09
22	872.0	872.0	0.0	2/15/09
23	873.0	873.0	0.0	2/15/09
24	874.0	874.0	0.0	2/15/09
25	875.0	875.0	0.0	2/15/09
26	876.0	876.0	0.0	2/15/09
27	877.0	877.0	0.0	2/15/09
28	878.0	878.0	0.0	2/15/09
29	879.0	879.0	0.0	2/15/09
30	880.0	880.0	0.0	2/15/09

**LEGEND**

- BOUNDARY
- ADJACENT PROPERTY
- ADJACENT LOT
- ADJACENT ROAD
- ADJACENT RAILROAD
- ADJACENT WATERWAY
- ADJACENT AIRWAY
- ADJACENT POWERLINE
- ADJACENT TELEPHONE LINE
- ADJACENT FENCE
- ADJACENT DRAINAGE
- ADJACENT EROSION
- ADJACENT CONSTRUCTION
- ADJACENT UTILITIES
- ADJACENT STRUCTURES
- ADJACENT VEGETATION
- ADJACENT TOPOGRAPHY
- ADJACENT SURFACE
- ADJACENT SUBSTRATE
- ADJACENT BEDROCK
- ADJACENT SOILS
- ADJACENT CLIMATE
- ADJACENT AIR QUALITY
- ADJACENT NOISE
- ADJACENT VIBRATION
- ADJACENT ELECTROMAGNETIC INTERFERENCE
- ADJACENT OTHER

**ISLE TABLE**

LINE	LENGTH	BEARING
1	126.593	S89°28'58"W
2	126.593	S89°28'58"W
3	126.593	S89°28'58"W
4	126.593	S89°28'58"W
5	126.593	S89°28'58"W
6	126.593	S89°28'58"W
7	126.593	S89°28'58"W
8	126.593	S89°28'58"W
9	126.593	S89°28'58"W
10	126.593	S89°28'58"W
11	126.593	S89°28'58"W
12	126.593	S89°28'58"W
13	126.593	S89°28'58"W
14	126.593	S89°28'58"W
15	126.593	S89°28'58"W
16	126.593	S89°28'58"W
17	126.593	S89°28'58"W
18	126.593	S89°28'58"W
19	126.593	S89°28'58"W
20	126.593	S89°28'58"W
21	126.593	S89°28'58"W
22	126.593	S89°28'58"W
23	126.593	S89°28'58"W
24	126.593	S89°28'58"W
25	126.593	S89°28'58"W
26	126.593	S89°28'58"W
27	126.593	S89°28'58"W
28	126.593	S89°28'58"W
29	126.593	S89°28'58"W
30	126.593	S89°28'58"W
31	126.593	S89°28'58"W
32	126.593	S89°28'58"W
33	126.593	S89°28'58"W
34	126.593	S89°28'58"W
35	126.593	S89°28'58"W
36	126.593	S89°28'58"W
37	126.593	S89°28'58"W
38	126.593	S89°28'58"W
39	126.593	S89°28'58"W
40	126.593	S89°28'58"W
41	126.593	S89°28'58"W
42	126.593	S89°28'58"W
43	126.593	S89°28'58"W
44	126.593	S89°28'58"W
45	126.593	S89°28'58"W
46	126.593	S89°28'58"W
47	126.593	S89°28'58"W
48	126.593	S89°28'58"W
49	126.593	S89°28'58"W
50	126.593	S89°28'58"W
51	126.593	S89°28'58"W
52	126.593	S89°28'58"W
53	126.593	S89°28'58"W
54	126.593	S89°28'58"W
55	126.593	S89°28'58"W
56	126.593	S89°28'58"W
57	126.593	S89°28'58"W
58	126.593	S89°28'58"W
59	126.593	S89°28'58"W
60	126.593	S89°28'58"W
61	126.593	S89°28'58"W
62	126.593	S89°28'58"W
63	126.593	S89°28'58"W
64	126.593	S89°28'58"W
65	126.593	S89°28'58"W
66	126.593	S89°28'58"W
67	126.593	S89°28'58"W
68	126.593	S89°28'58"W
69	126.593	S89°28'58"W
70	126.593	S89°28'58"W
71	126.593	S89°28'58"W
72	126.593	S89°28'58"W
73	126.593	S89°28'58"W
74	126.593	S89°28'58"W
75	126.593	S89°28'58"W
76	126.593	S89°28'58"W
77	126.593	S89°28'58"W
78	126.593	S89°28'58"W
79	126.593	S89°28'58"W
80	126.593	S89°28'58"W
81	126.593	S89°28'58"W
82	126.593	S89°28'58"W
83	126.593	S89°28'58"W
84	126.593	S89°28'58"W
85	126.593	S89°28'58"W
86	126.593	S89°28'58"W
87	126.593	S89°28'58"W
88	126.593	S89°28'58"W
89	126.593	S89°28'58"W
90	126.593	S89°28'58"W
91	126.593	S89°28'58"W
92	126.593	S89°28'58"W
93	126.593	S89°28'58"W
94	126.593	S89°28'58"W
95	126.593	S89°28'58"W
96	126.593	S89°28'58"W
97	126.593	S89°28'58"W
98	126.593	S89°28'58"W
99	126.593	S89°28'58"W
100	126.593	S89°28'58"W

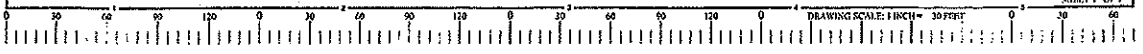
S.W. COR. OF SEC. 1/4 OF SEC. 2-4-19 CONC. MON. BY BRASS CAP IN 1900.56 E. 3537.95

S.E. COR. OF SEC. 1/4 OF SEC. 2-4-19 CONC. MON. BY BRASS CAP IN 1900.56 E. 3537.95

STARTING BENCHMARK  
 REFERENCE B.M. FOR S.W. COR. OF SEC. 1/4 OF SEC. 2-4-19 CONC. MON. BY BRASS CAP IN 1900.56 E. 3537.95

THE TOPOGRAPHIC SURVEY INFORMATION AS SHOWN HEREON IS BASED UPON INFORMATION PROVIDED BY THE CLIENT AND THE SURVEYOR HAS NOT CONDUCTED AN INDEPENDENT VERIFICATION OF THE SAME. THE SURVEYOR ASSUMES NO LIABILITY FOR ANY ERRORS OR OMISSIONS THAT MAY OCCUR IN THE USE OF THIS INFORMATION.

**R.A. Smith National, Inc.**  
 Beyond Surveying and Engineering



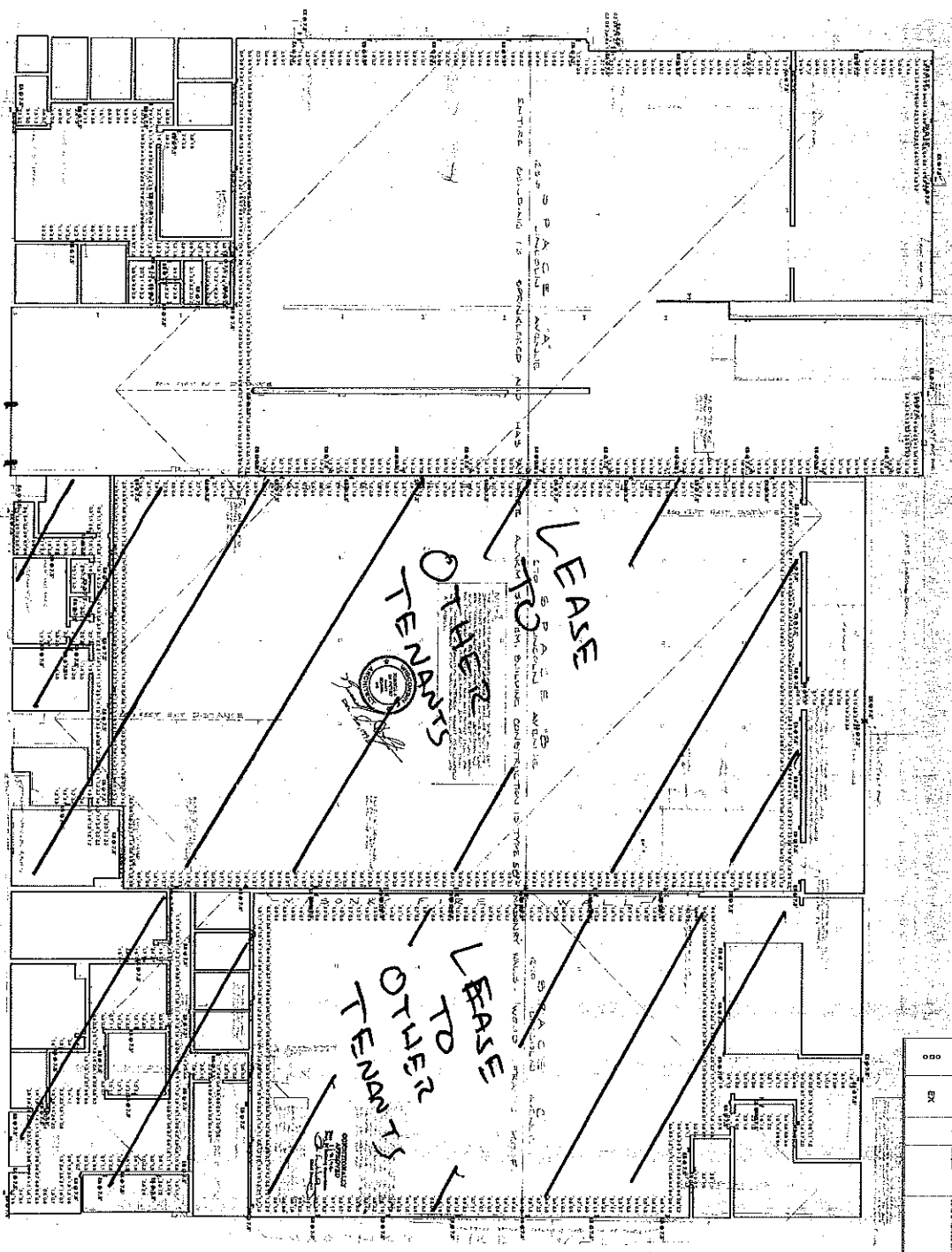
R.A. Smith National, Inc.

# Floor Plan

Name: \_\_\_\_\_  
 Title: \_\_\_\_\_  
 Date: \_\_\_\_\_  
 Project: \_\_\_\_\_  
 Location: \_\_\_\_\_  
 Scale: \_\_\_\_\_  
 Drawing No.: \_\_\_\_\_

Category	Area (sq. ft.)	Volume (cu. ft.)	Weight (lb.)
Concrete	1,234	3,085	12,345
Steel	567	1,417	5,678
Wood	890	2,225	8,901
Other	123	317	1,234
<b>Total</b>	<b>2,824</b>	<b>7,044</b>	<b>28,234</b>

Item No.	Description	Quantity	Unit	Material	Notes
000	EA	1	EA	Concrete	Foundation
000	EB	1	EA	Steel	Structural
000	EC	1	EA	Wood	Framing
000	ED	1	EA	Other	Roofing



ADD  
 DRIVE W  
 DOOR

LEASE  
 TO  
 OTHER  
 TENANTS

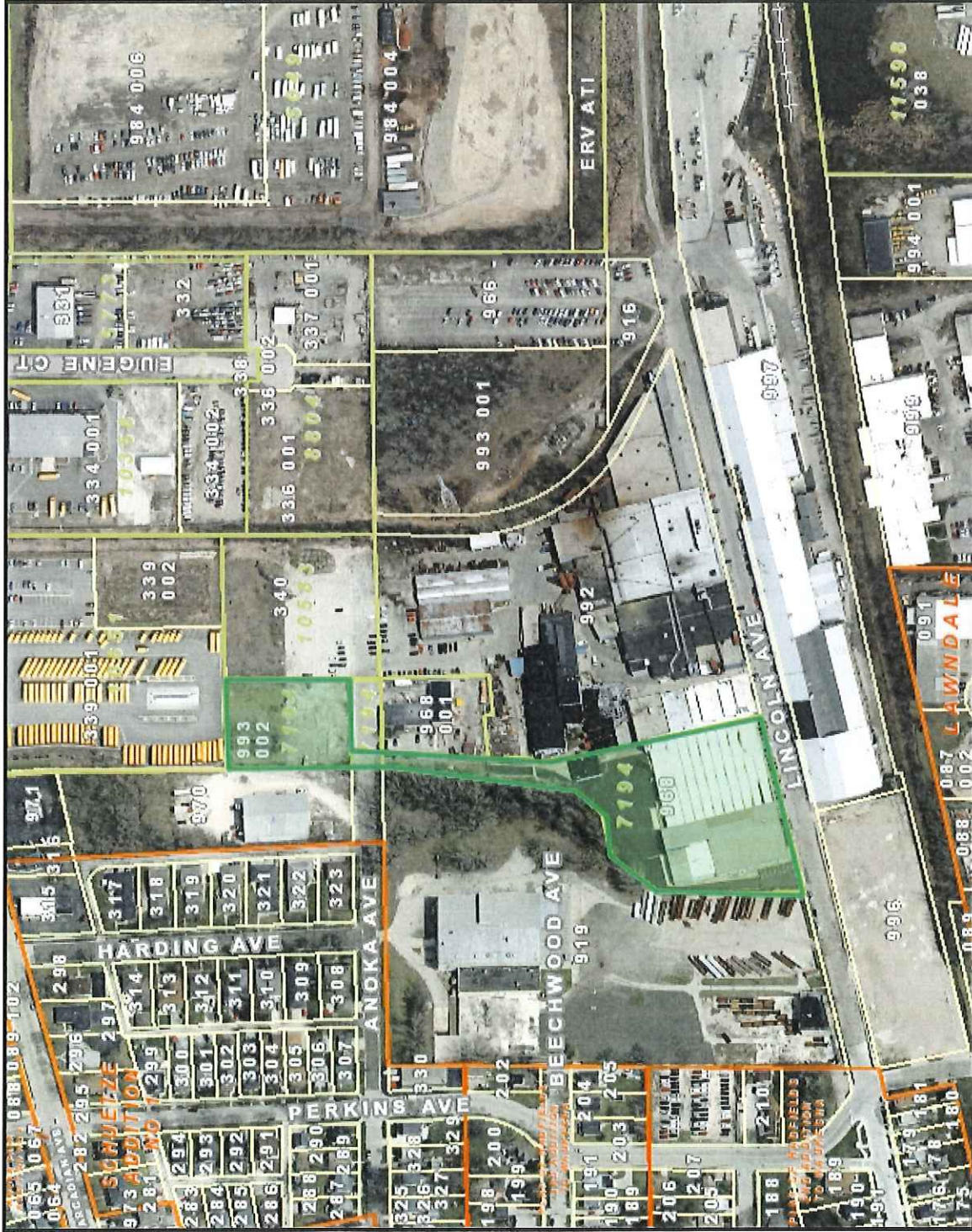
LEASE  
 TO  
 OTHER  
 TENANTS





LAND INFORMATION SYSTEMS DIVISION

# Waukesha County GIS Map



Legend

- Parcels
- Retired Parcels
- Retired Plats

The information and depictions herein are for informational purposes and Waukesha County specifically disclaims accuracy in this reproduction and specifically admonishes and advises that if specific and precise accuracy is required, the same should be determined by procurement of certified maps, surveys, plats, Flood Insurance Studies, or other official means. Waukesha County will not be responsible for any damages which result from third party use of the information and depictions herein, or for use which ignores this warning.

0 302.61 Feet

Notes:

Printed: 1/25/2019



# SITE PLAN

## 1750 LINCOLN AVENUE, WAUKESHA



24 PARKING STALLS (STRIPED)

SITE PLAN

WAKC1301993002



SITE PLAN

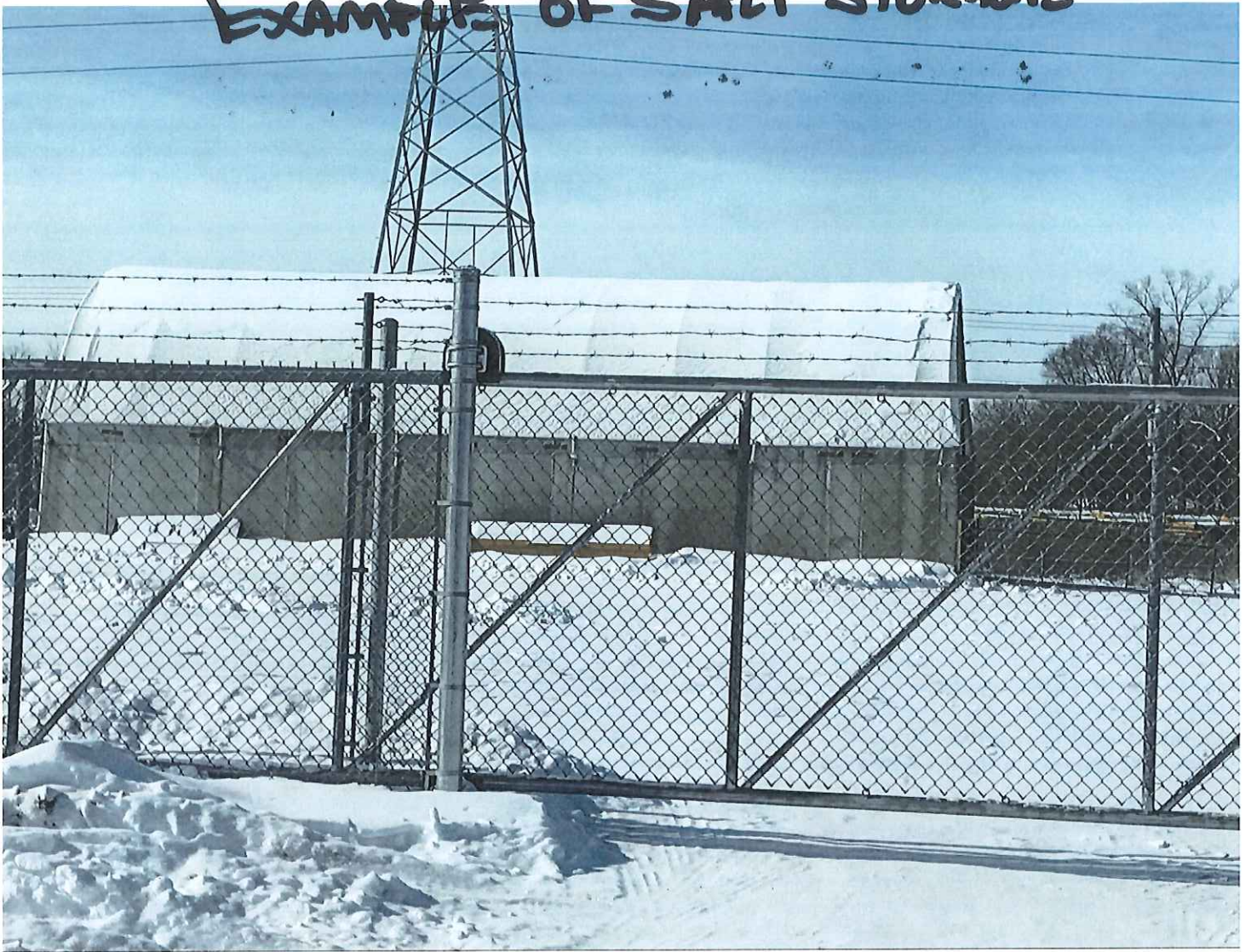
WAKC1301993002



# EXAMPLE OF SALT STORAGE

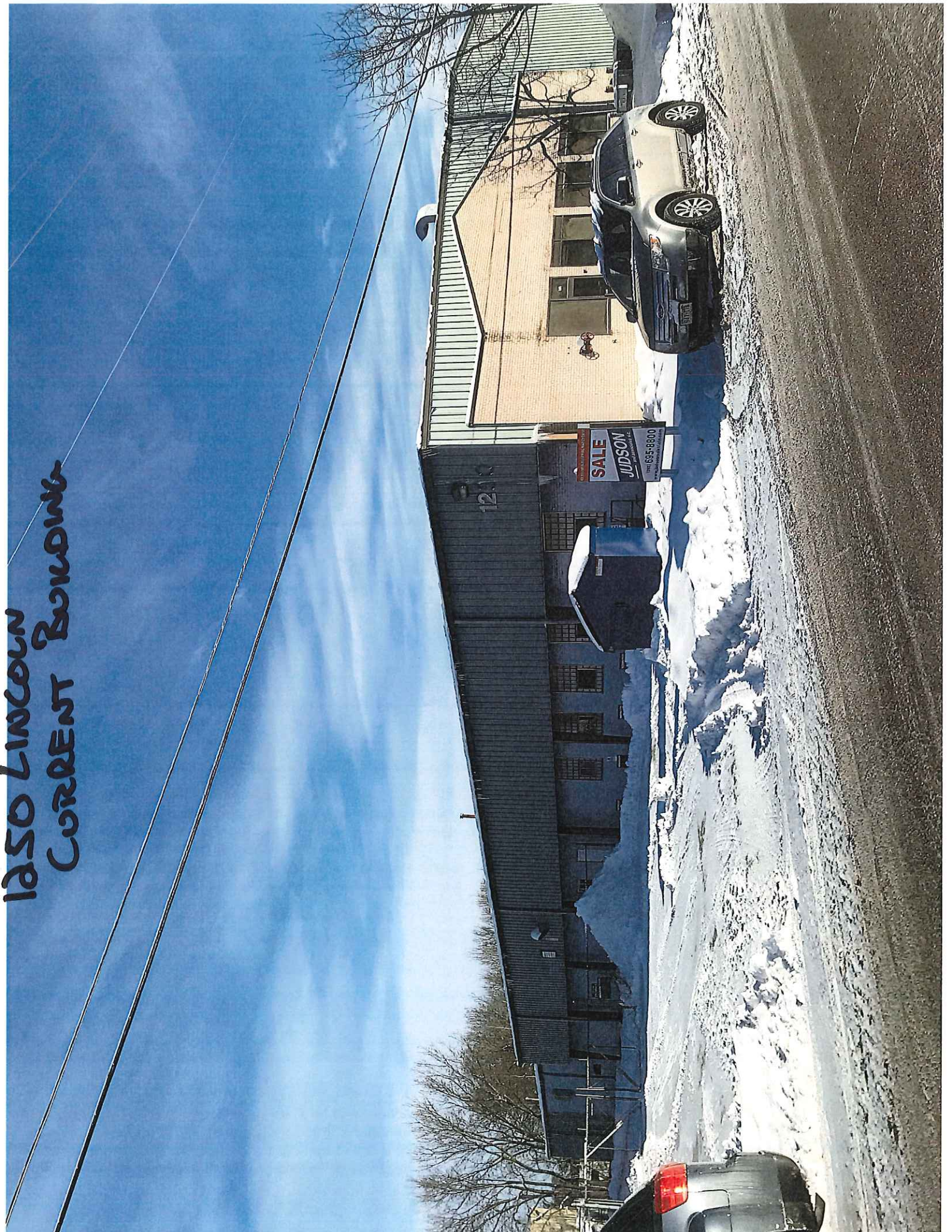


# EXAMPLE OF SALT STORAGE





1250 LINCOLN  
CURRENT BUILDING



1250 LINCOLN  
CURRENT BUILDING

