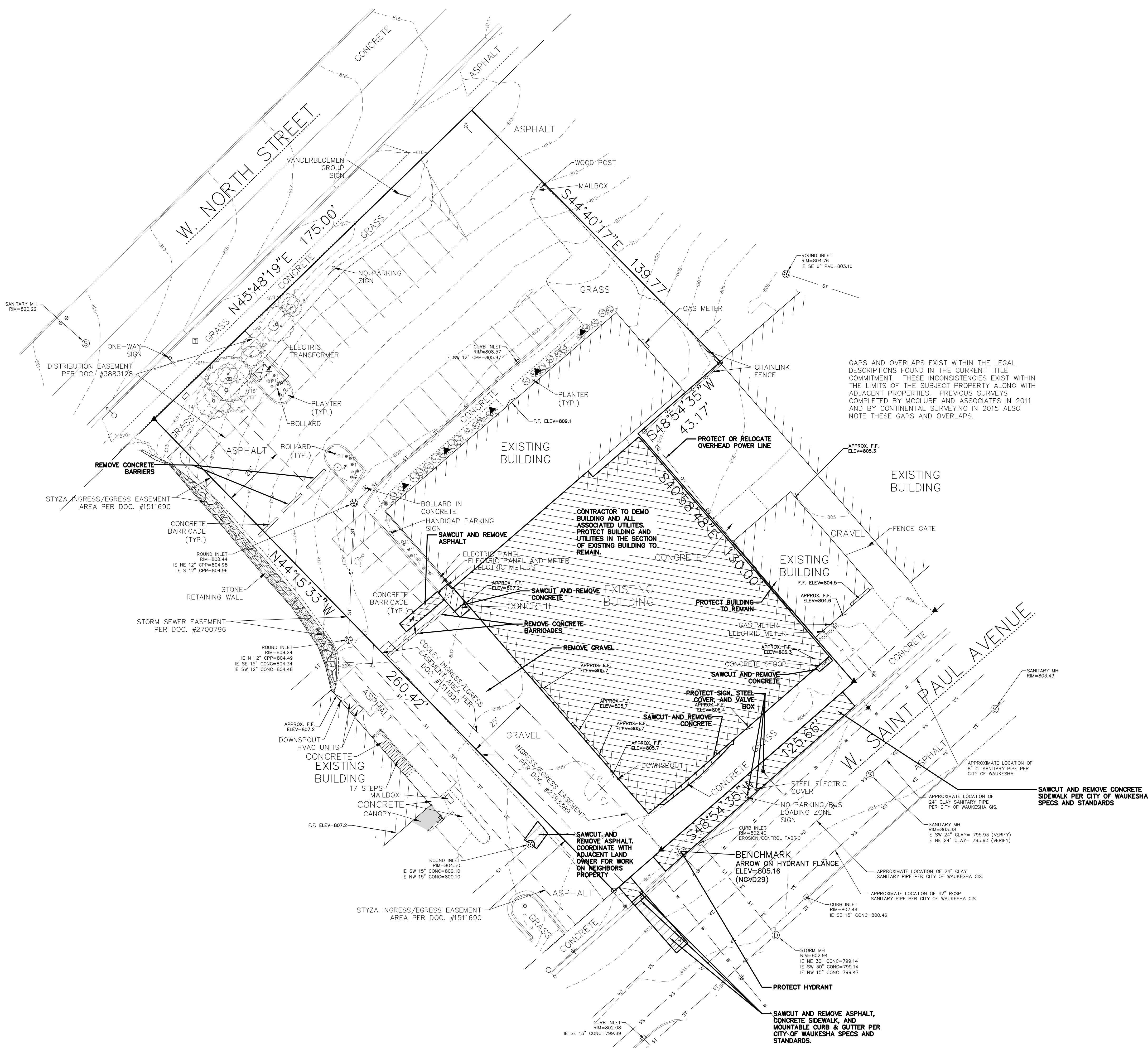


ST. PAUL PLACE PARTNERS, LLC  
**222 WEST SAINT PAUL AVE.**  
 WAUKESHA, WI • 53188



GAPS AND OVERLAPS EXIST WITHIN THE LEGAL DESCRIPTIONS FOUND IN THE CURRENT TITLE COMMITMENT. THESE INCONSISTENCIES EXIST WITHIN THE LIMITS OF THE SUBJECT PROPERTY ALONG WITH ADJACENT PROPERTIES. PREVIOUS SURVEYS COMPLETED BY MCCLURE AND ASSOCIATES IN 2011 AND BY CONTINENTAL SURVEYING IN 2015 ALSO NOTE THESE GAPS AND OVERLAPS.

NOTE:  
 PROPERTY LINES AND EASEMENTS SHOWN ON THIS PLAN WERE DRAFTED FROM INFORMATION CONTAINED IN TITLE COMMITMENT FILE NO. 034020 BY KNIGHT BARRY TITLE GROUP, DATED MAY 31, 2016. AN UPDATED PLAT OF SURVEY OR ALTA SURVEY HAS NOT BEEN AUTHORIZED AND THE PROPERTY LINES SHOWN ON THIS PLAN MAY BE INCOMPLETE OR IN ERROR.

NOTE:  
 SURFACE INDICATIONS OF UTILITIES ALONG WITH BIGGER'S HOTLINE MARKINGS ON THE SURVEYED PARCEL HAVE BEEN SHOWN. SIZES AND ELEVATION OF UNDERGROUND UTILITIES SHOWN HEREON ARE BASED ON FIELD MEASUREMENTS OF VISIBLE STRUCTURES IN COMBINATION WITH AVAILABLE DATA PROVIDED TO EXCEL ENGINEERING. EXCEL ENGINEERING MAKES NO GUARANTEE THAT ALL THE EXISTING UTILITIES IN THE SURVEYED AREA HAVE BEEN SHOWN NOR THAT THEY ARE IN THE EXACT LOCATION INDICATED. CONTRACTOR SHALL BE RESPONSIBLE FOR VERIFYING THE LOCATION OF ALL UTILITIES CRITICAL TO CONSTRUCTION.

PROFESSIONAL SEAL

**SHEET DATES**  
 ISSUE DATE NOV. 9, 2018

REVISIONS

**SHEET INFORMATION**  
 EXISTING SITE AND DEMOLITION PLAN  
 SHEET NUMBER

**C1.1**

