

**Court House
Project Step 2
Renovate 1959
Court House
#201705**

515 W Moreland Boulevard
Waukesha, Wisconsin 53188

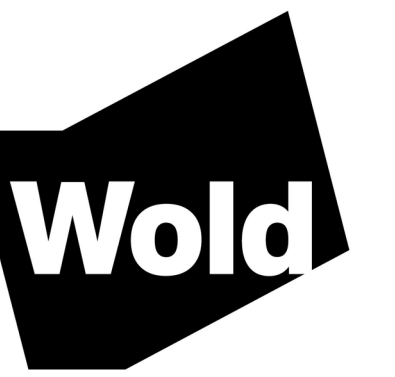
Waukesha County
515 W Moreland Boulevard
Waukesha, Wisconsin



KUENY ARCHITECTS

10905 Corporate Drive, Suite 100
Pleasant Prairie, Wisconsin 53158

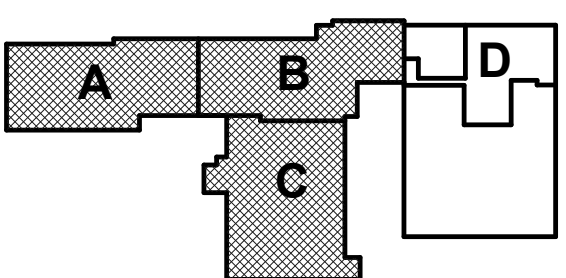
kuenyarch.com | 262.857.8101



**WOLD ARCHITECTS
AND ENGINEERS**

230 North Smith Street, Suite 310
Palatine, Illinois 60067

woldae.com | 847.241.6100

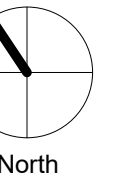


KEY PLAN

I hereby certify that this plan, specification or report was prepared by me or under my direct supervision and that I am a duly Licensed ARCHITECT under the laws of the State of Wisconsin

ARCH NAME		
License Number:	reg num	Date issue date
Revisions		
Description	Date	Num
Revision 1	January 01, 2013	1

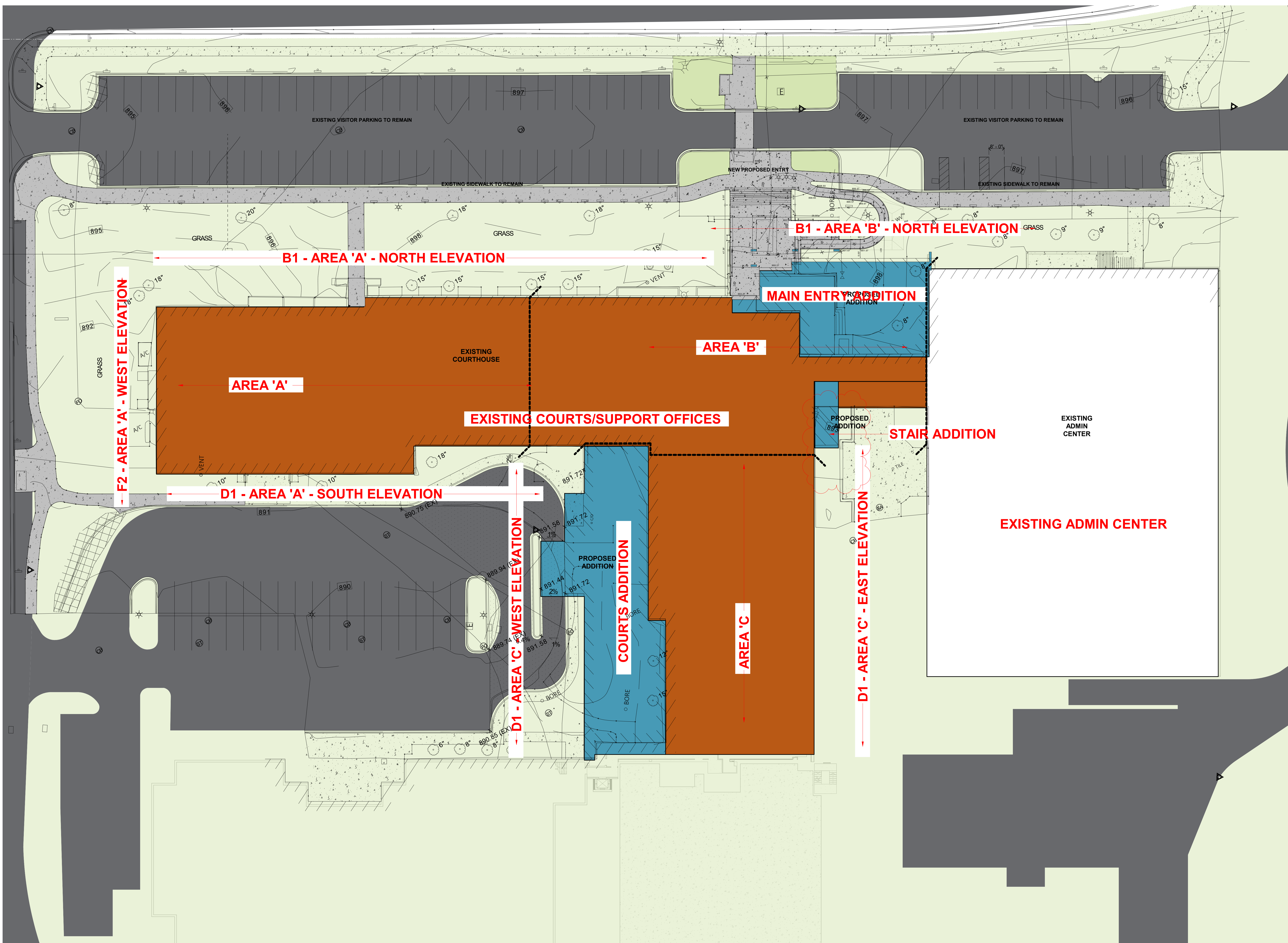
Comm: 203101
Date: 1/23/2023
Drawn: JW
Check: JW



MASTER SITE PLAN

Scale: 1" = 20'-0"

A0.002



NOT FOR CONSTRUCTION

IL

A

Kueny Architects, Inc., 10905 Corporate Drive, Suite 100, Pleasant Prairie, WI 53158
 Wold Architects and Engineers, 230 North Smith Street, Suite 310, Palatine, IL 60067
 1/23/2023 11:52 AM