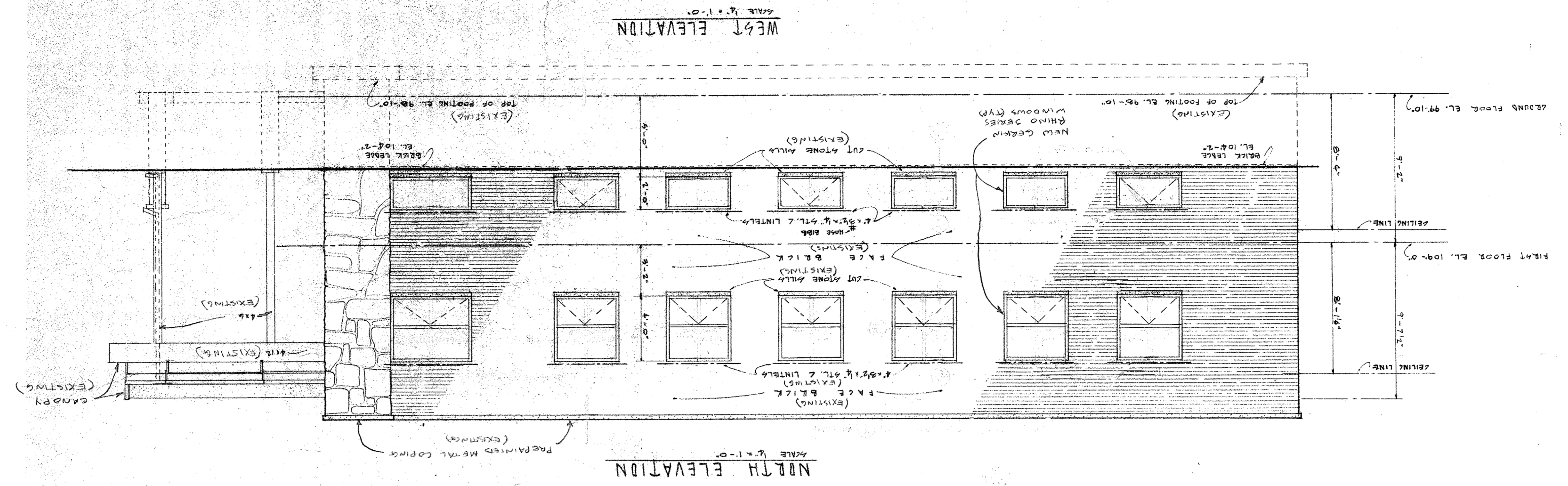
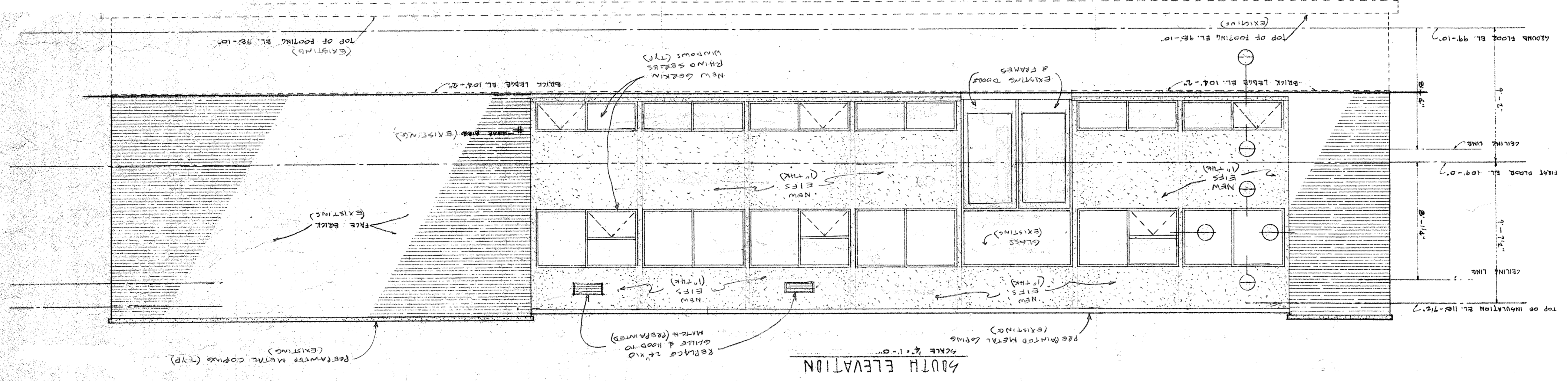
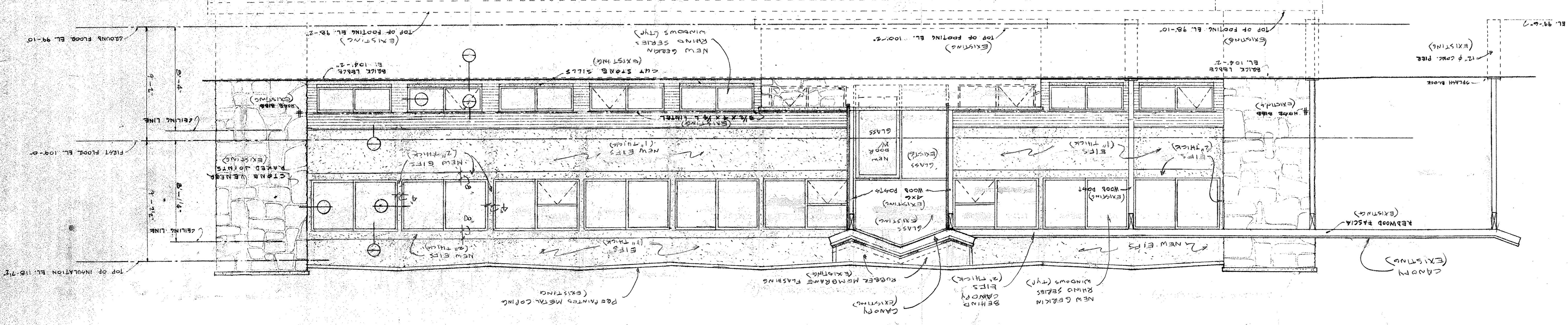


DRAWN BY: LARRY RUKA	JOB NO. A161474	PLAN DATE 3/28/16	DATE PRINTED	SHEET NO.	TITLE: <b>NORTH, SOUTH AND WEST ELEVATIONS</b>
					CLIENT: G.L. RUKA INVESTMENTS, LLC P.O. BOX 697 BROOKFIELD, WI 53008-0697 414 W. MORELAND BLVD. WAUKESHA, WI
Website: www.RukaAndAssociates.com 1565 Oak Grove Road, Brookfield, WI 53005 cell: 414/254-5178 email: larry@rukaengr.com fax: 262/432-2010 <b>LARRY R. RUKA, P.E.</b> <b>ARCHITECTURAL ENGINEERS</b> <b>Ruka &amp; Associates, Inc.</b>					

NOTES:  
 1) EIFS - EXTERIOR INSULATION FINISHING SYSTEM  
 2) GASKIN WINDOWS SHALL HAVE 1" THICK PAGES WITH TINTED GLASS AND ALUMINUM FRAMES ANODIZED BROWN. OPERABLE WINDOWS SHALL BE AWMING STYLE WITH RAINSCREENS ON INSIDE.



WEST ELEVATION  
SCALE 1/4\"/>

NORTH ELEVATION  
SCALE 1/4\"/>

SOUTH ELEVATION  
SCALE 1/4\"/>