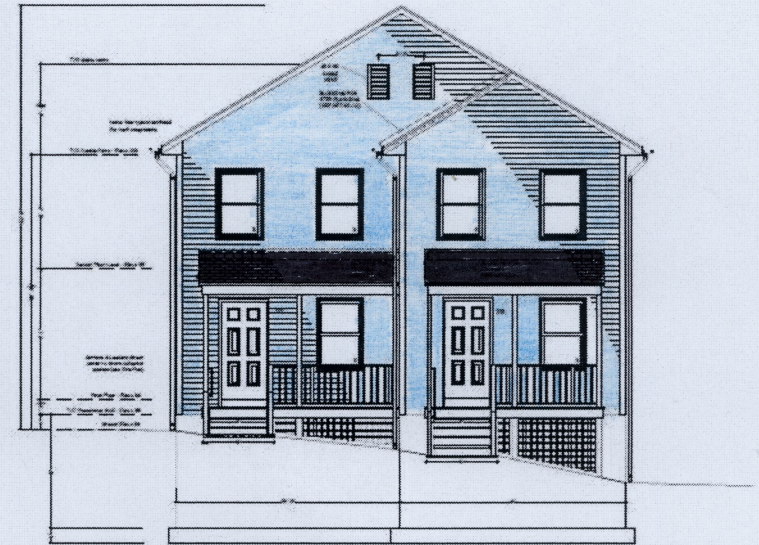


LEFT SIDE ELEVATION



FRONT ELEVATION



PROJECT: 199-201 GRANFIELD AVENUE, BRIDGEPORT
Two Family House

Habitat for Humanity of CFC

Drawn & Designed: HPKPC, Construction Division
Marie E. Vinyard, M.A.

1542 Barren Ave., Bridgeport CT 06610
(203) 333-2942
www.habitatcfc.org

REVISIONS:

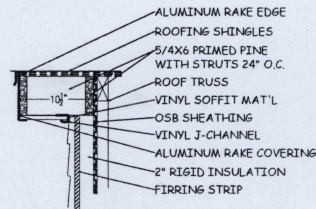
ELEVATIONS

DATE: FEBRUARY 6, 2009

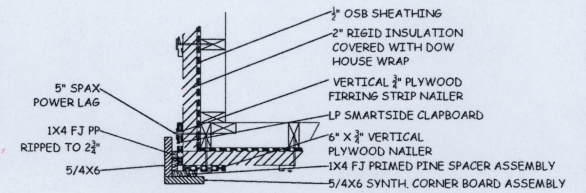
SCALE: 1/8" = 1'-0"

DRAWING NO.:

A1.1



RAKE SOFFIT DETAIL
SCALE: 1/8" = 1'-0"



CORNER BOARD ASSEMBLY DETAIL
SCALE: 1/8" = 1'-0"



LEFT SIDE ELEVATION



FRONT ELEVATION



PROJECT: 199-201 GRANFIELD AVENUE, BRIDGEPORT
Two Family House

Habitat for Humanity of CFC

Drawn & Designed: HFCFC, Construction Division
Maria E. Yngoyen, M.A.

1542 Barnum Ave., Bridgeport CT 06610
(203)333-2642

REVISIONS:

www.habitatcfc.org

ELEVATIONS

DATE: FEBRUARY 6, 2019

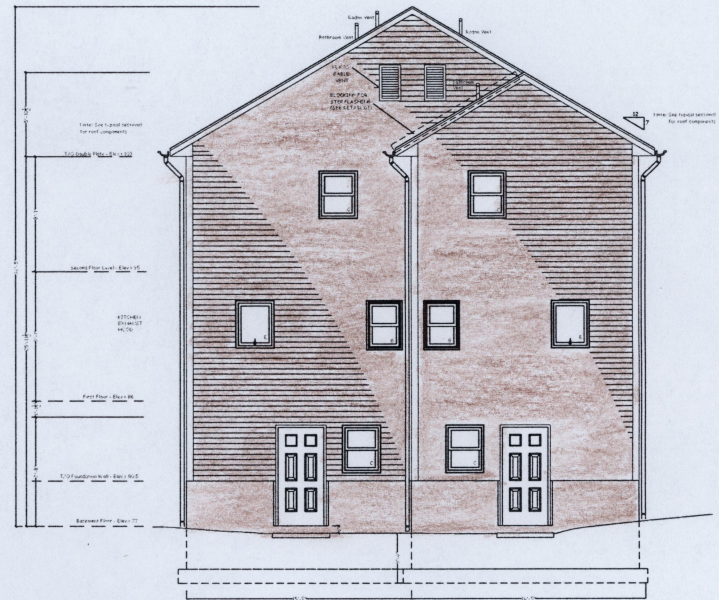
SCALE: 1/4" = 1'-0"

DRAWING No.:

A1.1



RIGHT SIDE ELEVATION



BACK ELEVATION



PROJECT: 199-201 GRANFIELD AVENUE, BRIDGEPORT
Two Family House

Habitat for Humanity of CFC

Drawn & Designed: HFCFC, Construction Division
Maria E. Yngoyen, M.A.

1542 Barnum Ave., Bridgeport CT 06610
(203)333-2642

REVISIONS:

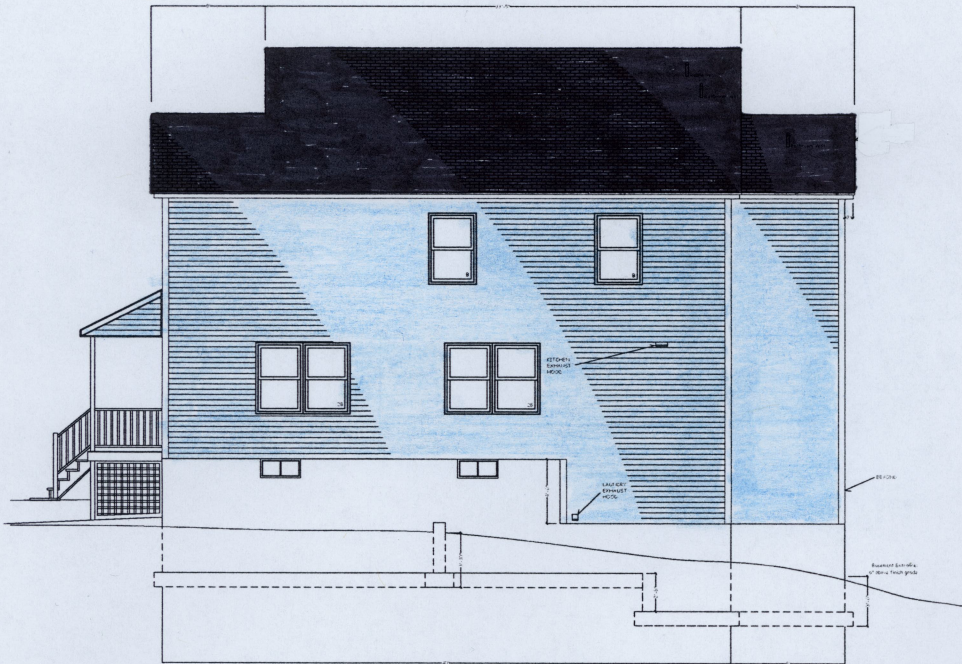
ELEVATIONS

DATE: FEBRUARY 6, 2019

SCALE: 1/4" = 1'-0"

DRAWING No.:

A1.2



RIGHT SIDE ELEVATION



BACK ELEVATION



PROJECT: 199-201 GRANFIELD AVENUE, BRIDGEPORT
Two Family House

Habitat for Humanity of CFC

Drawn & Designed: HFHCFC, Construction Division
Maria E. Yrigoyen, M.A.

1542 Barnum Ave., Bridgeport CT 06610
(203)333-2642

REVISIONS:

ELEVATIONS

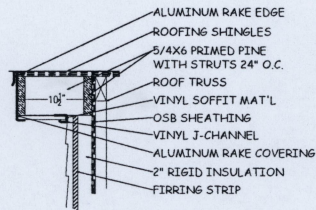
DATE: FEBRUARY 6, 2019

SCALE: 1/4" = 1'-0"

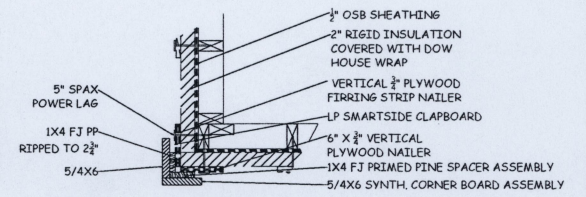
DRAWING No.:

A1.2

www.habitatcfc.org



RAKE SOFFIT DETAIL
SCALE: 1/2" = 1'-0"



CORNER BOARD ASSEMBLY DETAIL
SCALE: 1/2" = 1'-0"



LEFT SIDE ELEVATION



FRONT ELEVATION



PROJECT: 199-201 GRANFIELD AVENUE, BRIDGEPORT
Two Family House

Habitat for Humanity of CFC

Drawn & Designed: HFHCFC, Construction Division
Maria E. Ynggyen, M.A.

1542 Barnum Ave., Bridgeport CT 06610
(203)333-2642

REVISIONS:

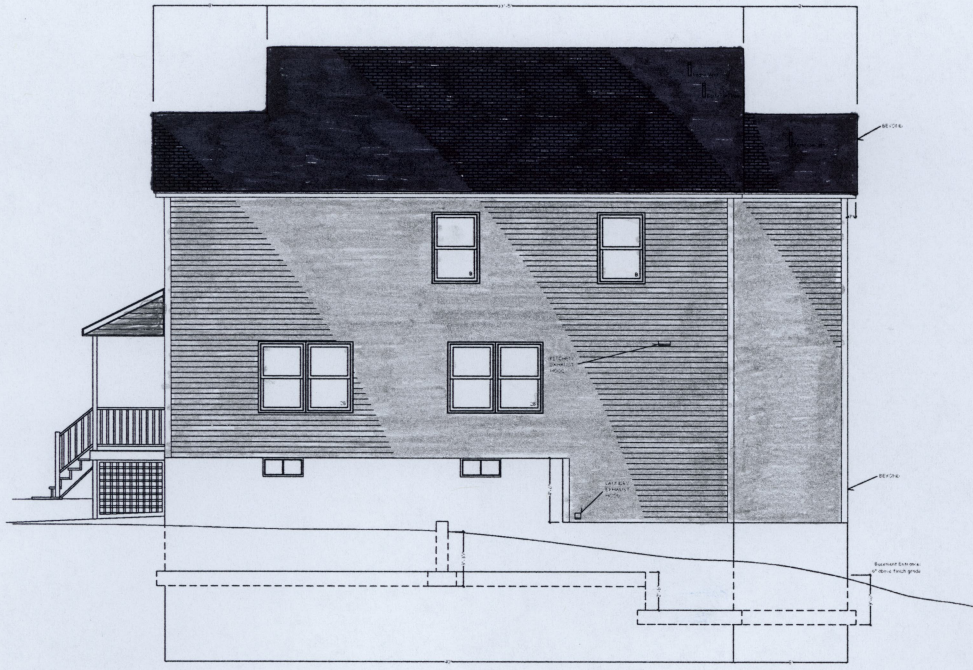
ELEVATIONS

DATE: FEBRUARY 6, 2019

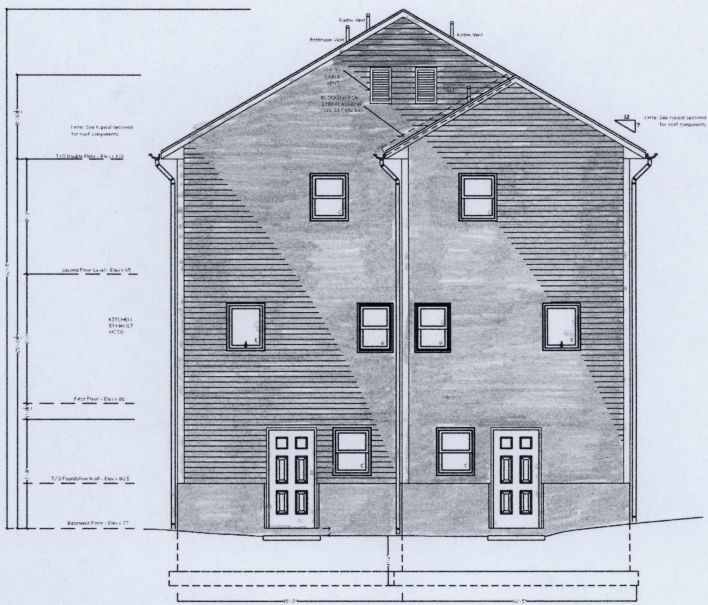
SCALE: 1/4" = 1'-0"

DRAWING No.:

A1.1



RIGHT SIDE ELEVATION



BACK ELEVATION



PROJECT: 199-201 GRANFIELD AVENUE, BRIDGEPORT
Two Family House

Habitat for Humanity of CFC

Drawn & Designed: HFH-CFC, Construction Division
Maria E. Yrigoyen, M.A.

1542 Barnum Ave., Bridgeport CT 06610
(203)333-2642

www.habitatcfc.org

ELEVATIONS

REVISIONS:

DATE: FEBRUARY 6, 2019

SCALE: 1/4" = 1'-0"

DRAWING No.:

A1.2