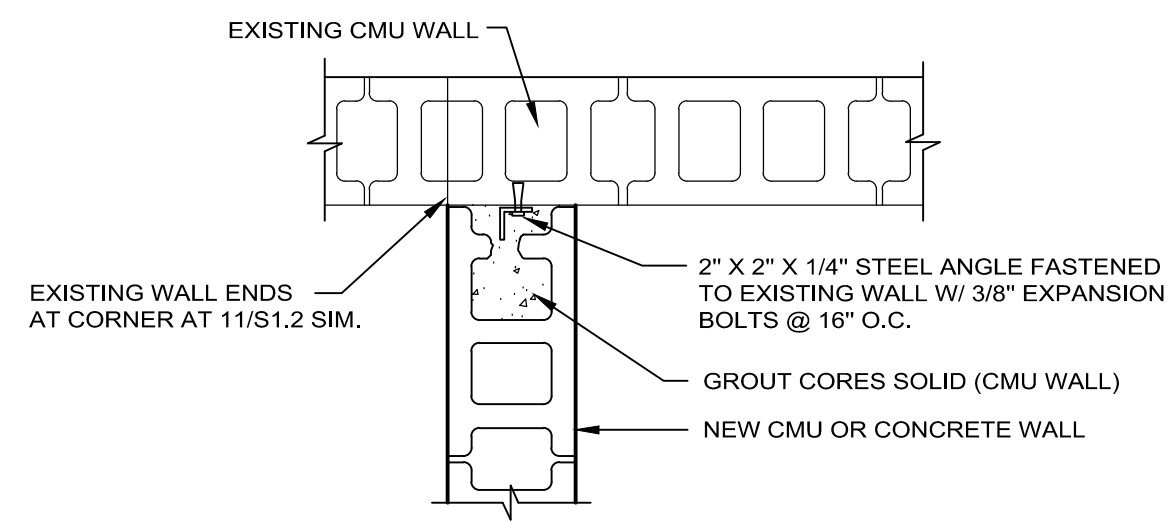
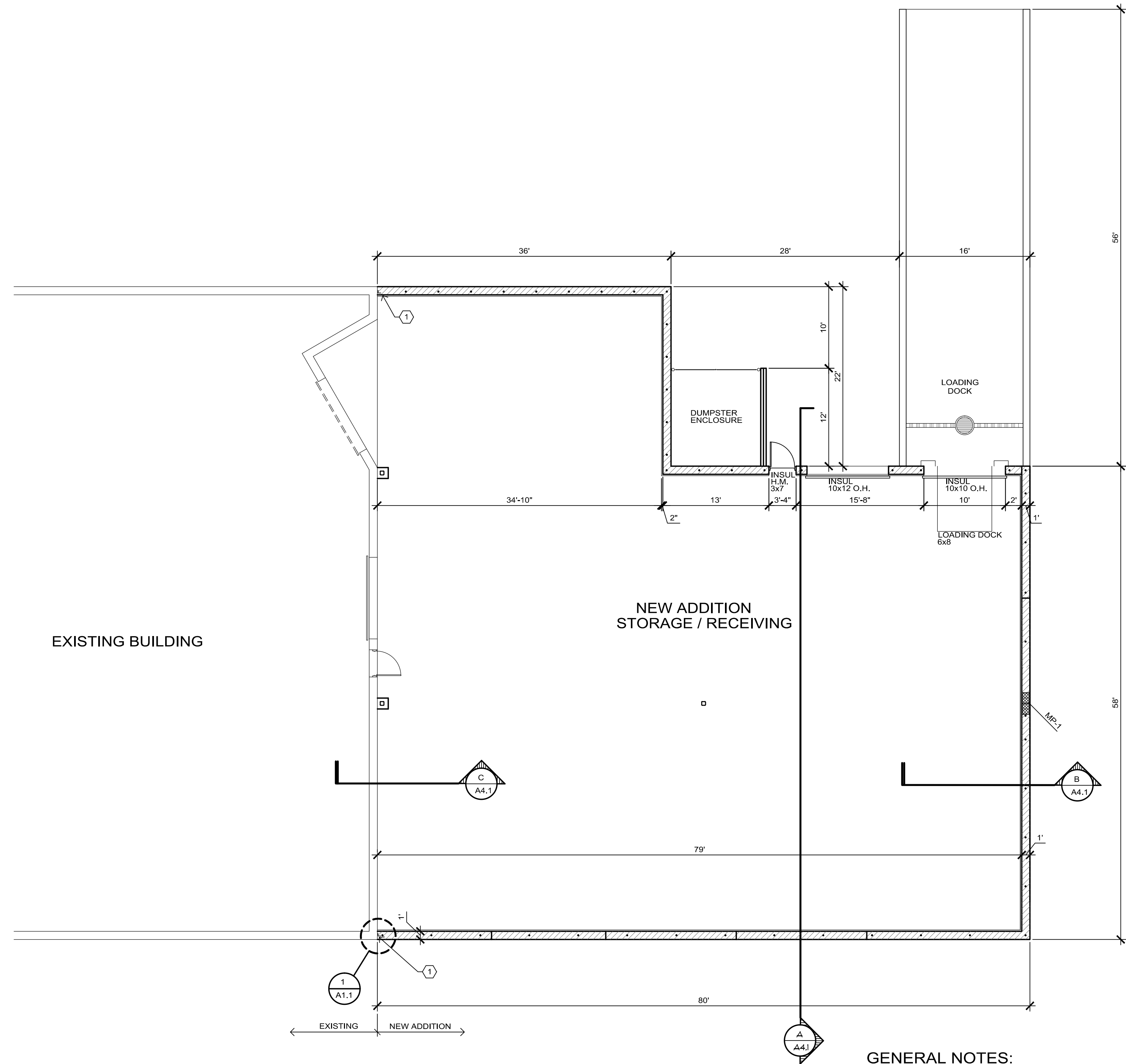


MASONRY PIER SCHEDULE			
TYPE "A"		TYPE "B"	
MARK	TYPE	SIZE (L) IN INCHES	VERTICAL REINFORCEMENT (NOTE 2)
MP1	B	32"	(8)-#6

- NOTES
- (1) W = WALL WIDTH -- SEE PLAN.
 - (2) PROVIDE DOWELS OF SAME SIZE AND NUMBER AS VERTICAL REINFORCEMENT. MINIMUM LAP PER GENERAL NOTES WITH STANDARD ACI HOOK INTO FOOTING.
 - (3) RUN HORIZONTAL REINFORCEMENT THROUGH PIER.
 - (4) FILL CELLS SOLID WITH 3000 PSI CONCRETE USE ONLY 2 CELL BLOCK. SEE MASONRY GENERAL NOTES FOR GROUTING METHODS ALLOWED.
 - (5) UNLESS SHOWN OTHERWISE, THE JAMBS OF ALL WINDOWS, DOORS OR OTHER OPENINGS SHALL HAVE THE END CELL GROUTED SOLID FULL HEIGHT.
 - (6) FOR LINTELS GREATER THAN 10'-0" LONG, PROVIDE 3/8"x4" LONG HEADED WELDED STUDS @ 32" o.c. ON TOP FLANGE.



1 WALL CONNECTION
 SCALE: 1/2" = 1'-0"



FLOOR PLAN
 SCALE: 1/8" = 1'-0"



GENERAL NOTES:

1. INDICATES GROUTED REBAR LOCATIONS IN CMU WALL W/ #6 REBAR @ 72" o.c.
2. ALL DIMENSIONS ARE TO FINISH SURFACES

FLOOR PLAN CONSTRUCTION NOTES:

1. PROVIDE VERTICAL ANGLE AT WALL CONNECTION PER DETAIL 1A1.1.