

Waukesha City Hall Waukesha, WI

BWB R

1241 John Q Hammons Dr., Ste. 503 Madison, WI 53717 608.829.3701 bwbr.com

raSmith 16745 W. Bluemound Road Brookfield, WI 53005-9938 (262) 781-1000 rasmith.com

This document may be an electronic file or may be printed from an electronic file provided to the user. It is the sole responsibility of the user to ensure that the content and quality is consistent with the content and quality of the original documents on file at BWBR.

Name \_\_\_\_\_ Date \_\_\_\_\_ Lic./Reg. No. \_\_\_\_\_

Issued For \_\_\_\_\_

Item \_\_\_\_\_ Date \_\_\_\_\_

\_\_\_\_\_

\_\_\_\_\_

\_\_\_\_\_

\_\_\_\_\_

\_\_\_\_\_

\_\_\_\_\_

\_\_\_\_\_

\_\_\_\_\_

\_\_\_\_\_

\_\_\_\_\_

\_\_\_\_\_

\_\_\_\_\_

\_\_\_\_\_

\_\_\_\_\_

\_\_\_\_\_

\_\_\_\_\_

\_\_\_\_\_

\_\_\_\_\_

\_\_\_\_\_

\_\_\_\_\_

\_\_\_\_\_

\_\_\_\_\_

\_\_\_\_\_

\_\_\_\_\_

\_\_\_\_\_

\_\_\_\_\_

\_\_\_\_\_

\_\_\_\_\_

\_\_\_\_\_

\_\_\_\_\_

\_\_\_\_\_

\_\_\_\_\_

\_\_\_\_\_

\_\_\_\_\_

\_\_\_\_\_

\_\_\_\_\_

\_\_\_\_\_

\_\_\_\_\_

\_\_\_\_\_

\_\_\_\_\_

\_\_\_\_\_

\_\_\_\_\_

\_\_\_\_\_

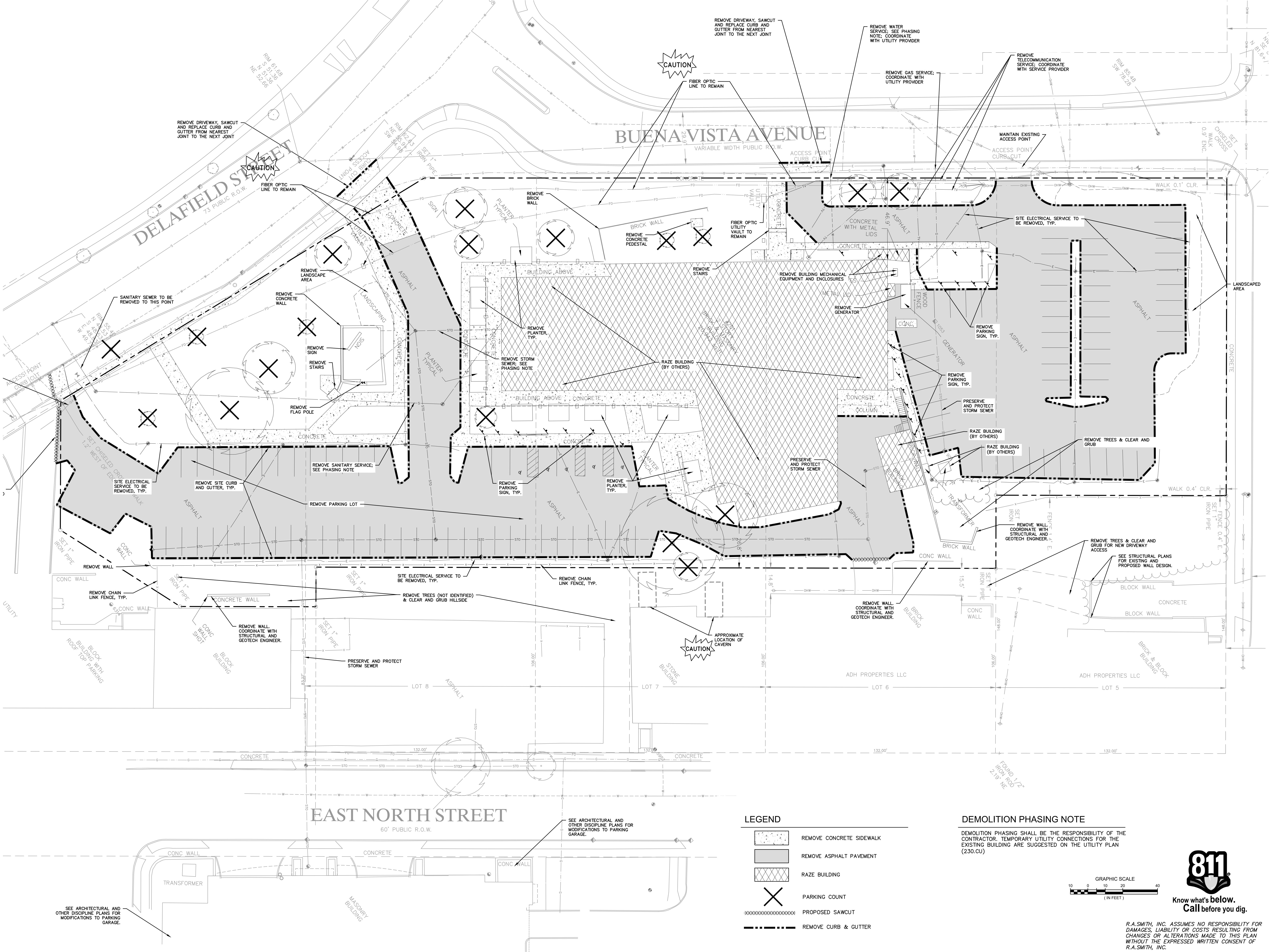
\_\_\_\_\_

\_\_\_\_\_

\_\_\_\_\_

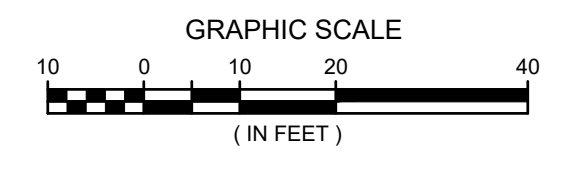
\_\_\_\_\_

\_\_\_\_\_



LEGEND
REMOVE CONCRETE SIDEWALK
REMOVE ASPHALT PAVEMENT
RAZE BUILDING
PARKING COUNT
PROPOSED SAWCUT
REMOVE CURB & GUTTER

DEMOLITION PHASING NOTE
DEMOLITION PHASING SHALL BE THE RESPONSIBILITY OF THE CONTRACTOR. TEMPORARY UTILITY CONNECTIONS FOR THE EXISTING BUILDING ARE SUGGESTED ON THE UTILITY PLAN (230.CU)

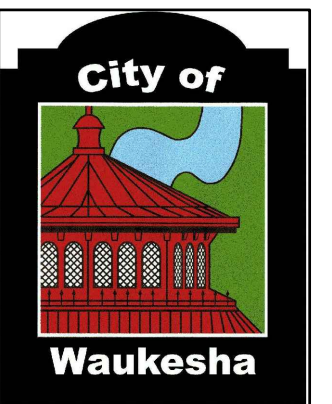


Know what's below. Call before you dig.

R.A. SMITH, INC. ASSUMES NO RESPONSIBILITY FOR DAMAGES, LIABILITY OR COSTS RESULTING FROM CHANGES OR ALTERATIONS MADE TO THIS PLAN WITHOUT THE EXPRESSED WRITTEN CONSENT OF R.A. SMITH, INC.

200.CD

Copyright BWBR



Waukesha City Hall  
Waukesha, WI



1241 John Q Hammons Dr., Ste. 503  
Madison, WI 53717  
608.829.3701  
bwbr.com

raSmith  
16745 W. Bluemound Road  
Brookfield, WI 53005-9938  
CREATIVITY BEYOND ENGINEERING  
608.781.1000  
rasmith.com

This document may be an electronic file or may be printed from an electronic file provided to the user. It is the sole responsibility of the user to ensure that the content and quality is consistent with the content and quality of the original documents on file at BWBR.

Name \_\_\_\_\_  
Date \_\_\_\_\_ Lic./Reg. No. \_\_\_\_\_

Issued For \_\_\_\_\_

Item \_\_\_\_\_ Date \_\_\_\_\_

\_\_\_\_\_

\_\_\_\_\_

\_\_\_\_\_

\_\_\_\_\_

\_\_\_\_\_

\_\_\_\_\_

\_\_\_\_\_

\_\_\_\_\_

\_\_\_\_\_

\_\_\_\_\_

\_\_\_\_\_

\_\_\_\_\_

\_\_\_\_\_

\_\_\_\_\_

\_\_\_\_\_

\_\_\_\_\_

\_\_\_\_\_

\_\_\_\_\_

\_\_\_\_\_

\_\_\_\_\_

\_\_\_\_\_

\_\_\_\_\_

\_\_\_\_\_

\_\_\_\_\_

\_\_\_\_\_

\_\_\_\_\_

\_\_\_\_\_

\_\_\_\_\_

\_\_\_\_\_

\_\_\_\_\_

\_\_\_\_\_

\_\_\_\_\_

\_\_\_\_\_

\_\_\_\_\_

\_\_\_\_\_

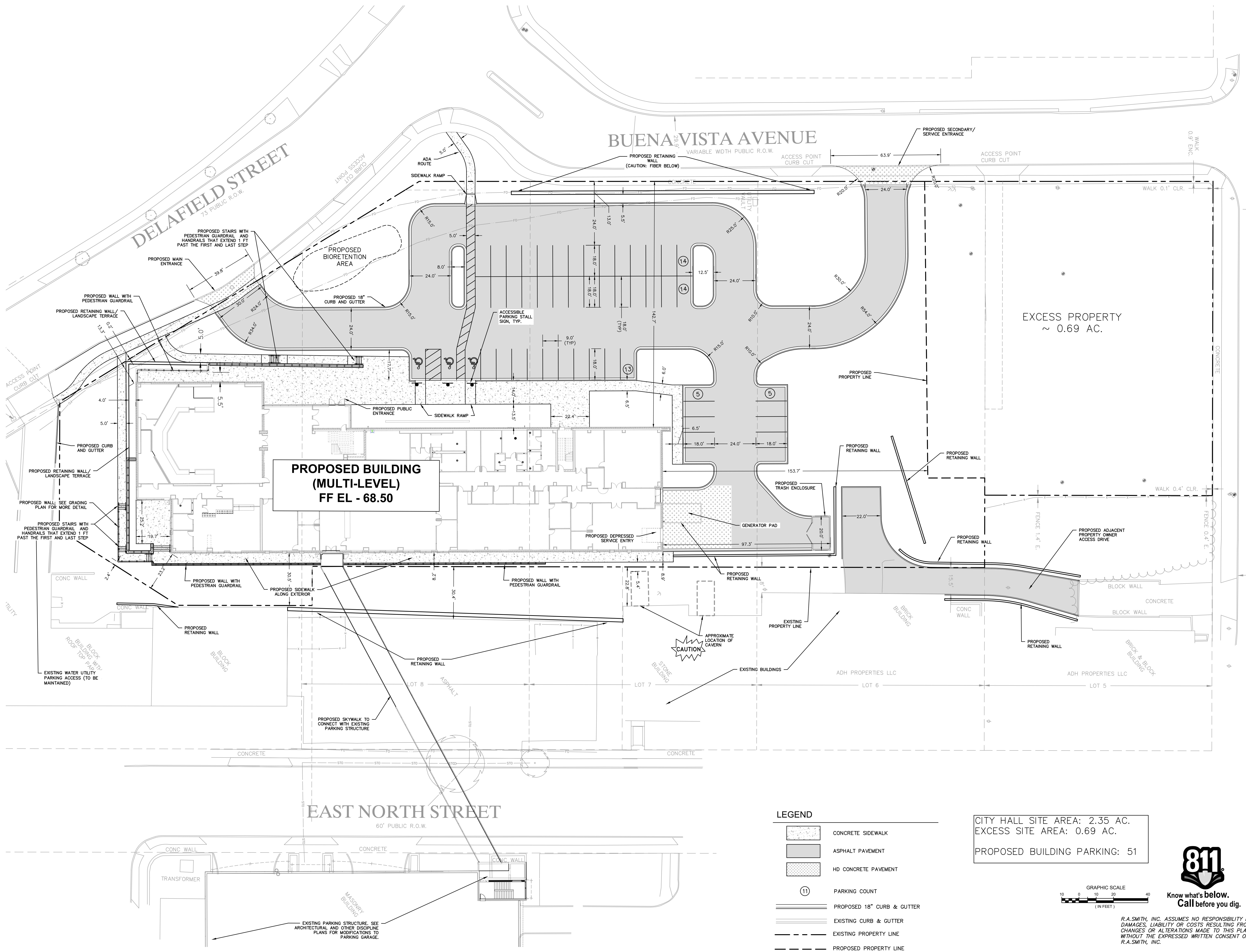
\_\_\_\_\_

\_\_\_\_\_

\_\_\_\_\_

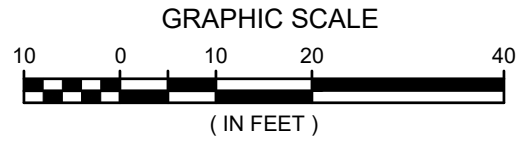
\_\_\_\_\_

\_\_\_\_\_



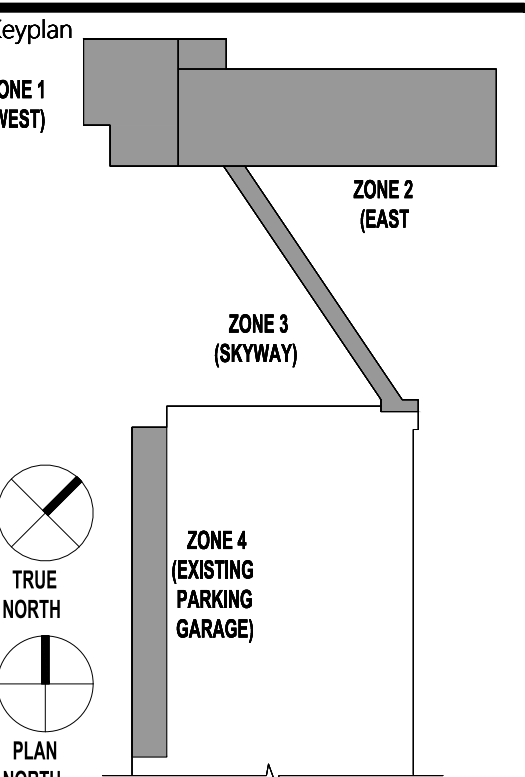
- LEGEND**
- CONCRETE SIDEWALK
  - ASPHALT PAVEMENT
  - HD CONCRETE PAVEMENT
  - PARKING COUNT
  - PROPOSED 18" CURB & GUTTER
  - EXISTING CURB & GUTTER
  - EXISTING PROPERTY LINE
  - PROPOSED PROPERTY LINE

CITY HALL SITE AREA: 2.35 AC.  
EXCESS SITE AREA: 0.69 AC.  
PROPOSED BUILDING PARKING: 51



R.A. SMITH, INC. ASSUMES NO RESPONSIBILITY FOR DAMAGES, LIABILITY OR COSTS RESULTING FROM CHANGES OR ALTERATIONS MADE TO THIS PLAN WITHOUT THE EXPRESSED WRITTEN CONSENT OF R.A. SMITH, INC.

**NOT FOR CONSTRUCTION**  
**FOR REFERENCE ONLY**



raSmith Project No. 3170507  
Project Manager TOM MORTENSEN

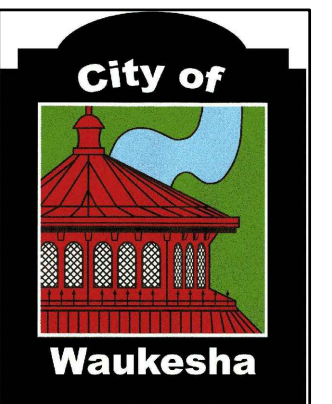
Sheet Title CIVIL SITE PLAN

Sheet No.

210.CS

Copyright BWBR





Waukesha  
City Hall  
Waukesha, WI



1241 John Q Hammons Dr., Ste. 503  
Madison, WI 53717  
608.829.3701  
bwbr.com



16745 W. Bluemound Road  
Brookfield, WI 53005-9938  
(262) 781-1000  
raSmith.com

This document may be an electronic file or may be printed from an electronic file provided to the user. It is the sole responsibility of the user to ensure that the content and quality is consistent with the content and quality of the original documents on file at BWBR.

I hereby certify that this plan, specification or report was prepared by me or under my direct supervision and that I am a duly Licensed Registered Architect under the laws of the State of Wisconsin.

Name \_\_\_\_\_

Date \_\_\_\_\_ Lic./Reg. No. \_\_\_\_\_

Issued For \_\_\_\_\_

Item \_\_\_\_\_ Date \_\_\_\_\_

\_\_\_\_\_

\_\_\_\_\_

\_\_\_\_\_

\_\_\_\_\_

\_\_\_\_\_

\_\_\_\_\_

\_\_\_\_\_

\_\_\_\_\_

\_\_\_\_\_

\_\_\_\_\_

\_\_\_\_\_

\_\_\_\_\_

\_\_\_\_\_

\_\_\_\_\_

\_\_\_\_\_

\_\_\_\_\_

\_\_\_\_\_

\_\_\_\_\_

\_\_\_\_\_

\_\_\_\_\_

\_\_\_\_\_

\_\_\_\_\_

\_\_\_\_\_

\_\_\_\_\_

\_\_\_\_\_

raSmith Project No. \_\_\_\_\_ Project Manager

3170507 TOM MORTENSEN

Sheet Title

**CIVIL UTILITY PLAN**

Sheet No.

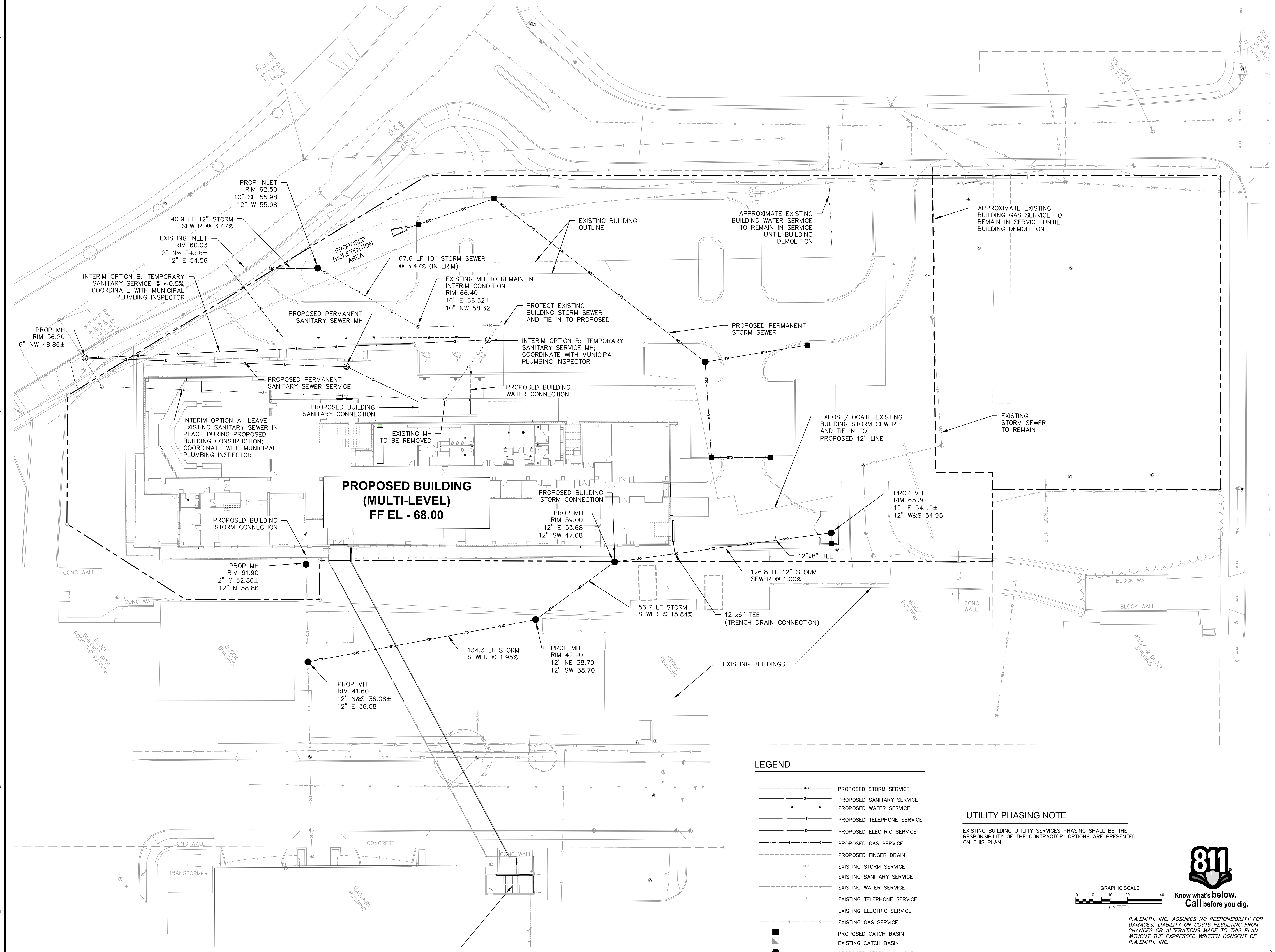
\_\_\_\_\_

Sheet No.

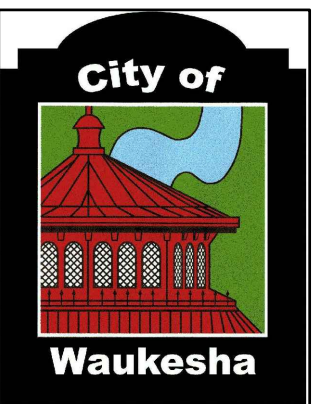
\_\_\_\_\_

230.CU

Copyright BWBR



**NOT FOR CONSTRUCTION FOR REFERENCE ONLY**



Waukesha  
City Hall  
Waukesha, WI

**B W B R**

1241 John Q Hammons Dr., Ste. 503  
Madison, WI 53717  
608.829.3701  
bwbr.com

Consultants  
**raSmith** 16745 W. Bluemound Road  
Brookfield, WI 53005-9938  
CREATIVITY BEYOND ENGINEERING (262) 781-1000  
rasmith.com

This document may be an electronic file or may be printed from an electronic file provided to the user. It is the sole responsibility of the user to ensure that the content and quality is consistent with the content and quality of the original documents on file at BWBR.

I hereby certify that this plan, specification or report was prepared by me or under my direct supervision and that I am a duly Licensed Registered Architect under the laws of the State of Wisconsin.

Name \_\_\_\_\_  
Date \_\_\_\_\_ Lic./Reg. No. \_\_\_\_\_

Issued For \_\_\_\_\_

Item \_\_\_\_\_ Date \_\_\_\_\_

\_\_\_\_\_

\_\_\_\_\_

\_\_\_\_\_

\_\_\_\_\_

\_\_\_\_\_

\_\_\_\_\_

\_\_\_\_\_

\_\_\_\_\_

\_\_\_\_\_

\_\_\_\_\_

\_\_\_\_\_

\_\_\_\_\_

\_\_\_\_\_

\_\_\_\_\_

\_\_\_\_\_

\_\_\_\_\_

\_\_\_\_\_

\_\_\_\_\_

\_\_\_\_\_

\_\_\_\_\_

\_\_\_\_\_

\_\_\_\_\_

\_\_\_\_\_

\_\_\_\_\_

\_\_\_\_\_

\_\_\_\_\_

\_\_\_\_\_

\_\_\_\_\_

\_\_\_\_\_

\_\_\_\_\_

\_\_\_\_\_

\_\_\_\_\_

\_\_\_\_\_

\_\_\_\_\_

\_\_\_\_\_

\_\_\_\_\_

\_\_\_\_\_

\_\_\_\_\_

\_\_\_\_\_

\_\_\_\_\_

\_\_\_\_\_

\_\_\_\_\_

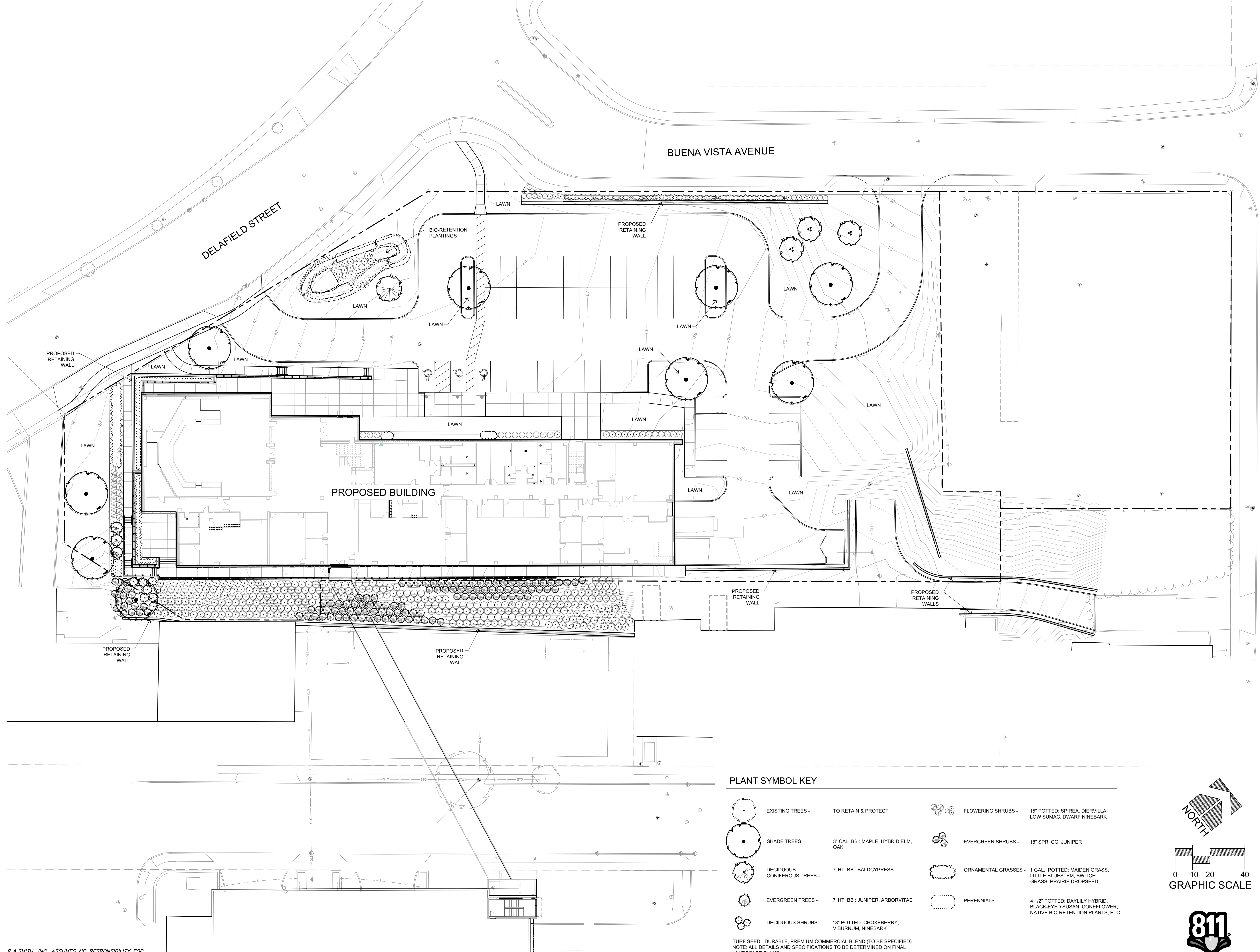
\_\_\_\_\_

\_\_\_\_\_

\_\_\_\_\_

\_\_\_\_\_

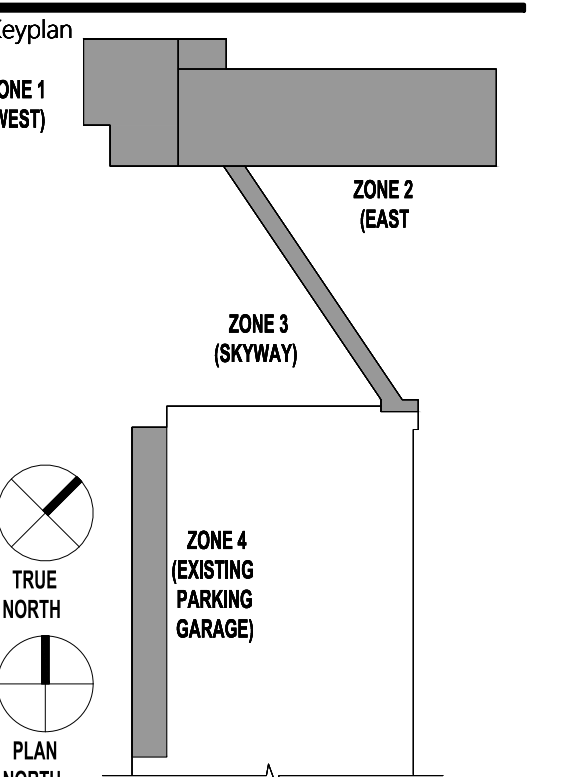
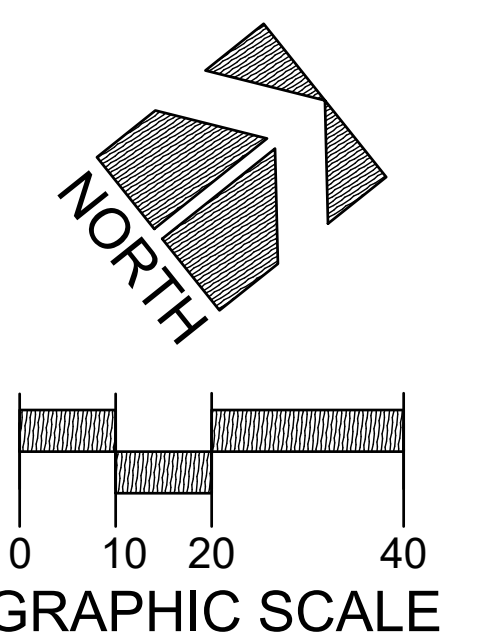
\_\_\_\_\_



**PLANT SYMBOL KEY**

	EXISTING TREES - TO RETAIN & PROTECT		FLOWERING SHRUBS - 15" POTTED: SPIREA, DIERVILLA, LOW SUMAC, DWARF NINEBARK
	SHADE TREES - 3" CAL. BB : MAPLE, HYBRID ELM, OAK		EVERGREEN SHRUBS - 18" SPR. CG: JUNIPER
	DECIDUOUS CONIFEROUS TREES - 7 HT. BB : BALDCYPRESS		ORNAMENTAL GRASSES - 1 GAL. POTTED: MAIDEN GRASS, LITTLE BLUESTEM, SWITCH GRASS, PRAIRIE DROPSSEED
	EVERGREEN TREES - 7 HT. BB : JUNIPER, ARBORVITAE		PERENNIALS - 4 1/2" POTTED: DAYLILY HYBRID, BLACK-EYED SUSAN, CONEFLOWER, NATIVE BIO-RETENTION PLANTS, ETC.
	DECIDUOUS SHRUBS - 18" POTTED: CHOKEBERRY, VIBURNUM, NINEBARK		

TURF SEED - DURABLE, PREMIUM COMMERCIAL BLEND (TO BE SPECIFIED)  
NOTE: ALL DETAILS AND SPECIFICATIONS TO BE DETERMINED ON FINAL LANDSCAPE PLANS.



R.A.SMITH, INC. ASSUMES NO RESPONSIBILITY FOR DAMAGES, LIABILITY OR COSTS RESULTING FROM CHANGES OR ALTERATIONS MADE TO THIS PLAN WITHOUT THE EXPRESSED WRITTEN CONSENT OF R.A.SMITH, INC.



**C240.LP**

Sheet No. \_\_\_\_\_