

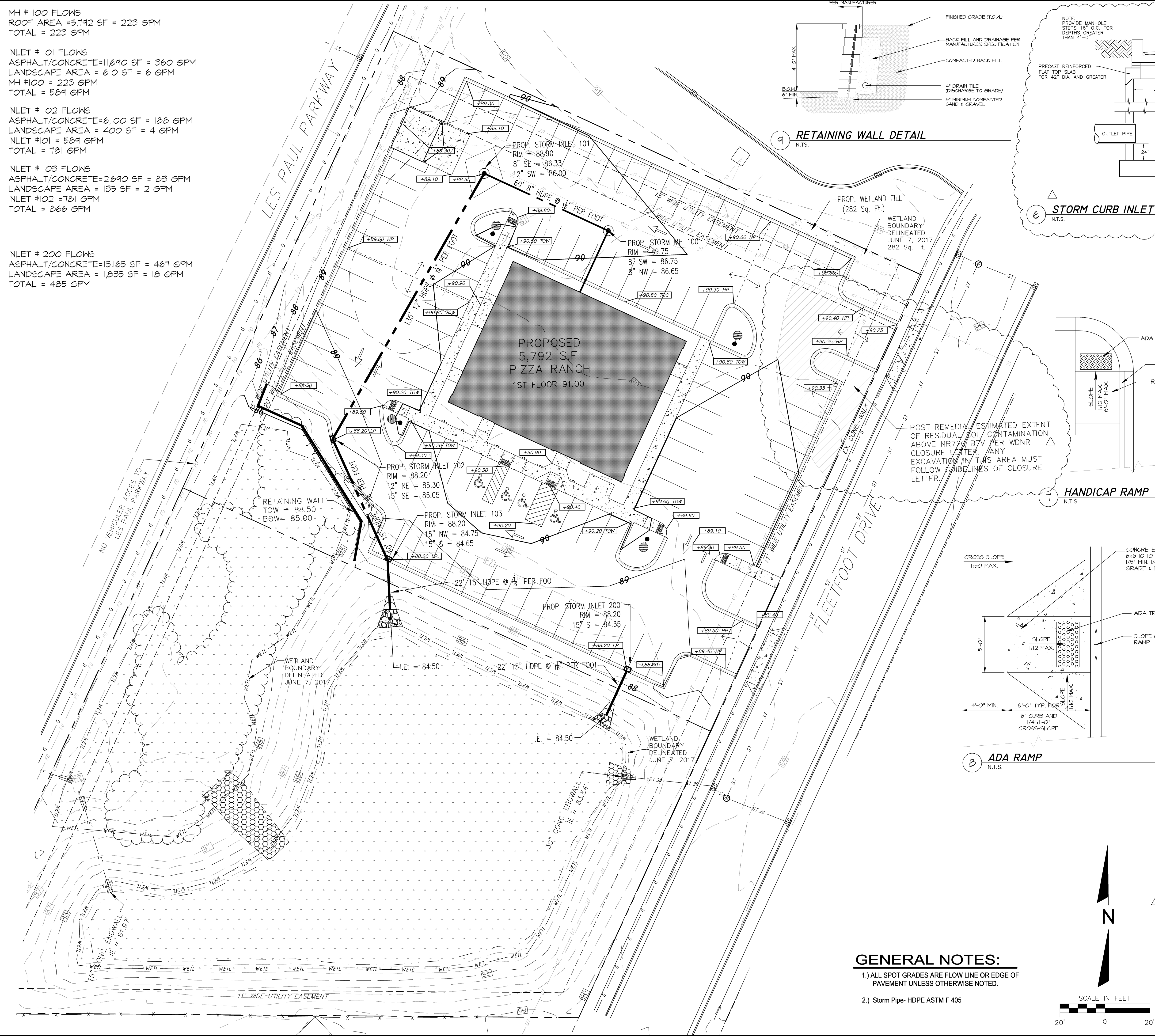
MH # 100 FLOWS
 ROOF AREA = 5,792 SF = 223 GPM
 TOTAL = 223 GPM

INLET # 101 FLOWS
 ASPHALT/CONCRETE=11,690 SF = 360 GPM
 LANDSCAPE AREA = 610 SF = 6 GPM
 MH #100 = 223 GPM
 TOTAL = 589 GPM

INLET # 102 FLOWS
 ASPHALT/CONCRETE=6,100 SF = 188 GPM
 LANDSCAPE AREA = 400 SF = 4 GPM
 INLET #101 = 589 GPM
 TOTAL = 781 GPM

INLET # 103 FLOWS
 ASPHALT/CONCRETE=2,690 SF = 83 GPM
 LANDSCAPE AREA = 135 SF = 2 GPM
 INLET #102 = 781 GPM
 TOTAL = 866 GPM

INLET # 200 FLOWS
 ASPHALT/CONCRETE=15,165 SF = 461 GPM
 LANDSCAPE AREA = 1,835 SF = 18 GPM
 TOTAL = 485 GPM



9 RETAINING WALL DETAIL
 N.T.S.

6 STORM CURB INLET 102, 103 & 200
 N.T.S.

1 STORM INLET 101
 N.T.S.

7 HANDICAP RAMP
 N.T.S.

8 ADA RAMP
 N.T.S.

2 DUMPSTER ENCLOSURE FRONT
 1/4" = 1'-0"

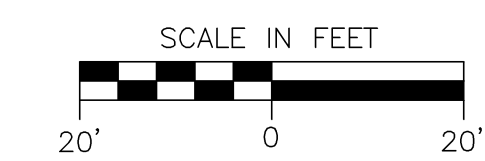
3 DUMPSTER ENCLOSURE REAR
 1/4" = 1'-0"

4 DUMPSTER ENCLOSURE LEFT
 1/4" = 1'-0"

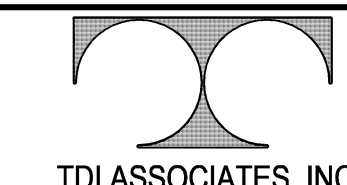
5 DUMPSTER ENCLOSURE RIGHT
 1/4" = 1'-0"

GENERAL NOTES:

- 1) ALL SPOT GRADES ARE FLOW LINE OR EDGE OF PAVEMENT UNLESS OTHERWISE NOTED.
- 2) Storm Pipe- HDPE ASTM F 405



REVISIONS:	
NOTE	DATE
Δ	08-02-17

TDI ASSOCIATES, INC All Rights Reserved N8 W2290 JOHNSON DRIVE, SUITE B4 WAUKESHA, WISCONSIN 53186 PHONE 262-409-2530 FAX 262-409-2531	 TDI ASSOCIATES, INC. ARCHITECTURE, ENGINEERING, PLANNING	OWNERSHIP OF DOCUMENTS This document and the ideas and design incorporated herein, as an instrument of professional service, is the sole property of TDI Associates, Inc. and it is to be used in whole or in part for any other project or purpose without the expressed written authorization of TDI Associates, Inc.
SCALE: 1" = 20'-0"	JOB NO: 15-383.000	DATE: 07-19-17
DESIGNED BY: ROB	DRAWN BY: ROB	CHECKED BY:
APPROVED BY:	ENGINEER	DATE
		SHEET C-3.0