



200 Mason Street #3
Onalaska, WI 54650
(608) 784 - 6808
info@larsonarchitect.com



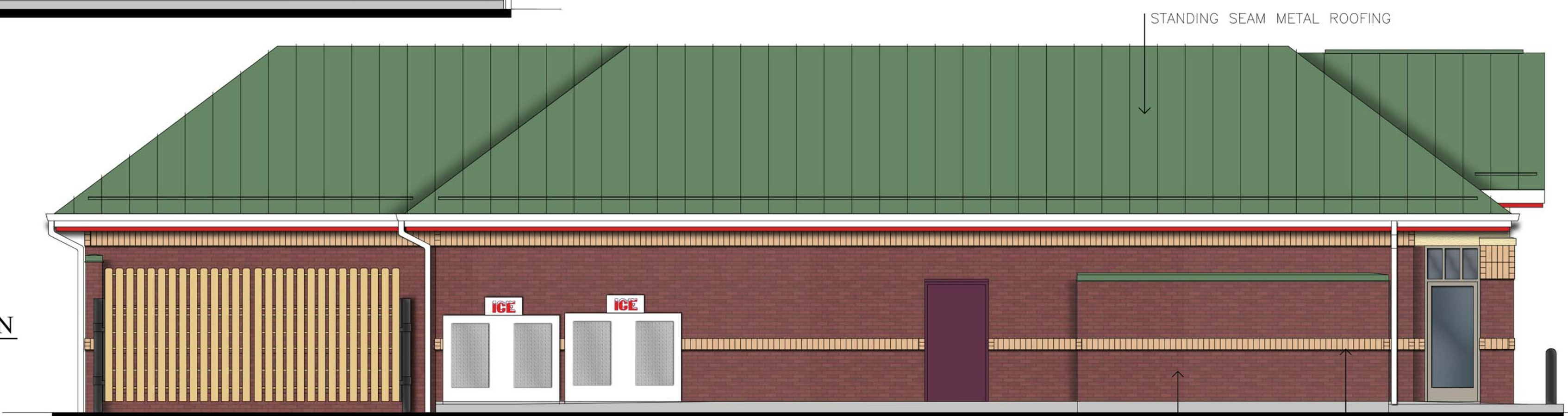
RED BRICK | TAN BRICK SOLDIER COURSE | TAN STUCCO

FRONT ELEVATION
1/4" = 1'-0"



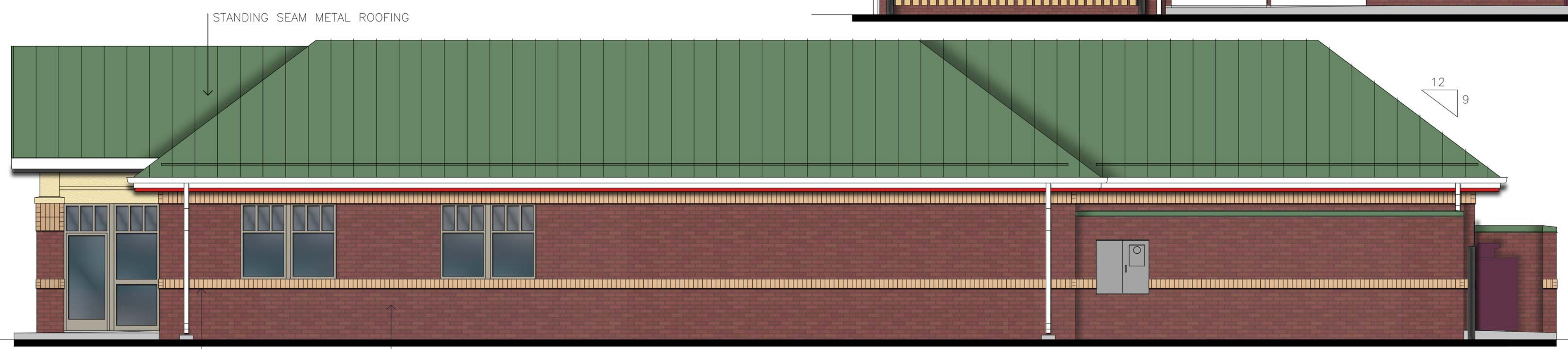
RED BRICK | TAN SOLDIER COURSE

LEFT ELEVATION
3/16" = 1'-0"



RED BRICK | TAN SOLDIER COURSE

RIGHT ELEVATION
3/16" = 1'-0"



TAN SOLDIER COURSE | RED BRICK

BACK ELEVATION
3/16" = 1'-0"



RH MN COMBO
PROTOTYPE

A200