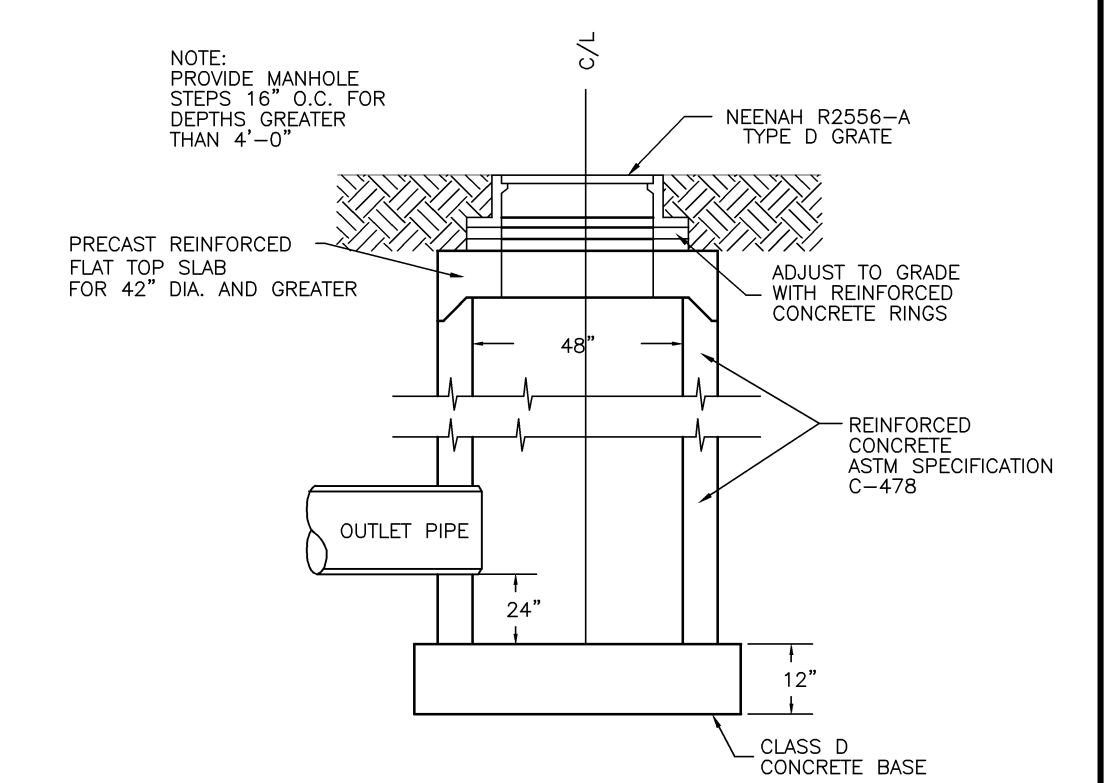
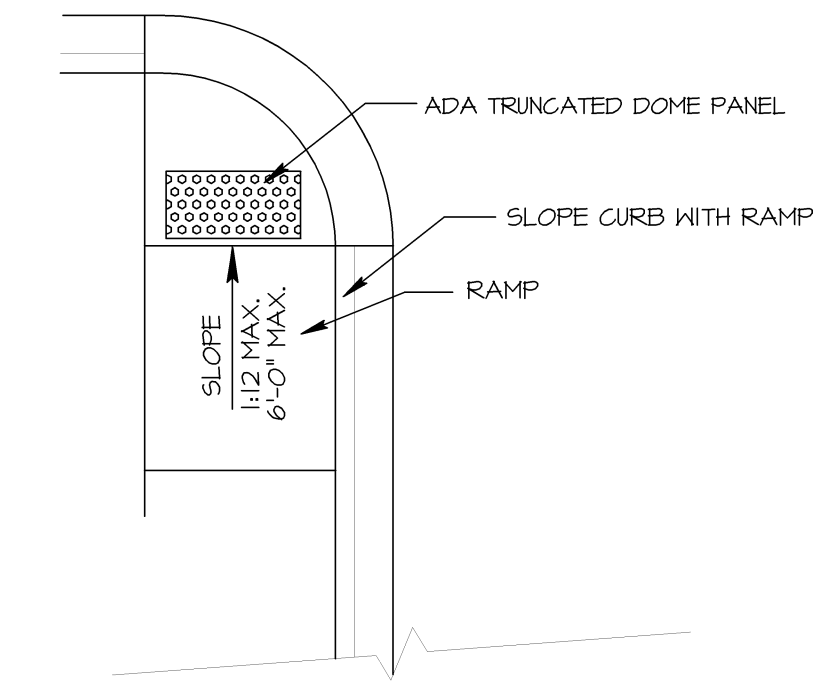


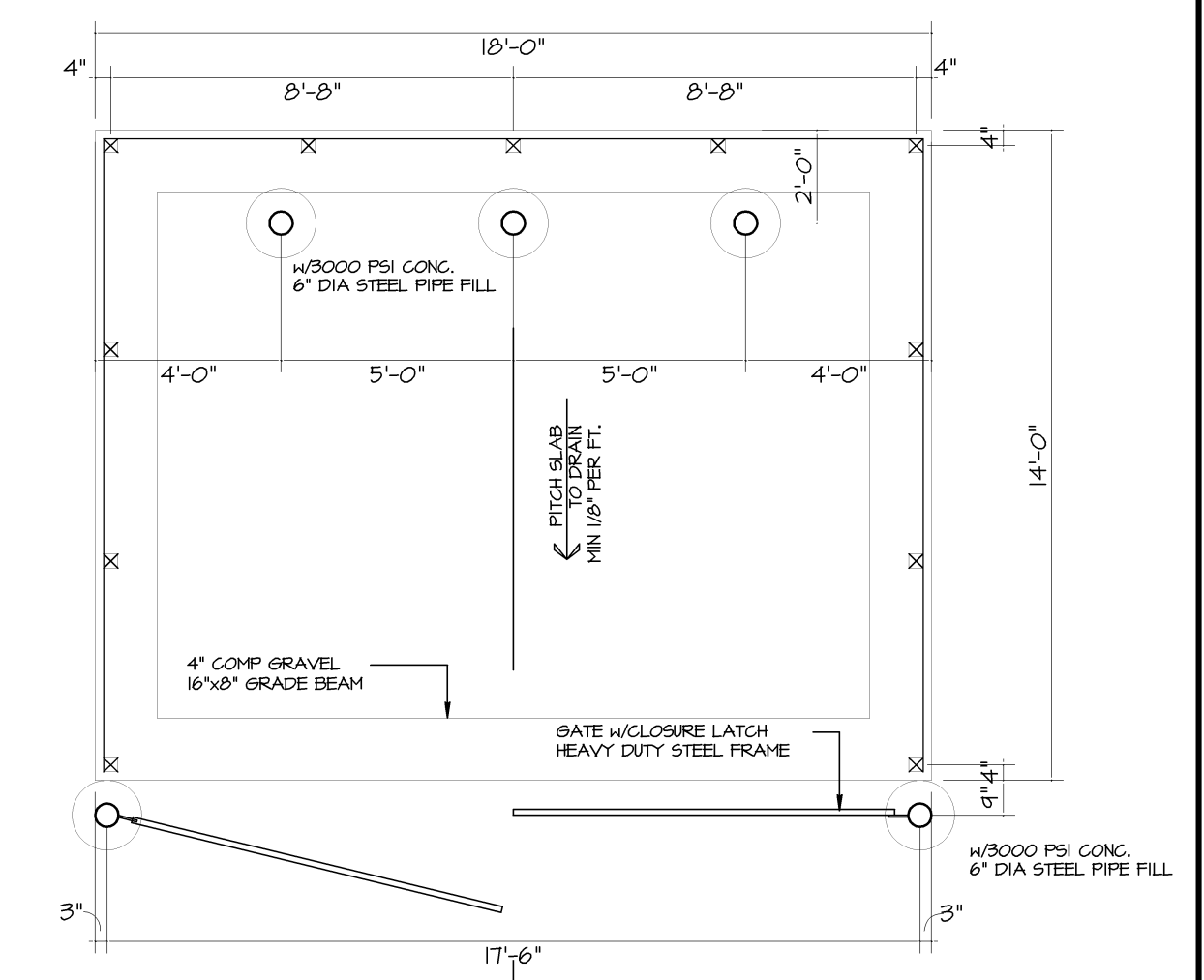
5 RETAINING WALL DETAIL
N.T.S.



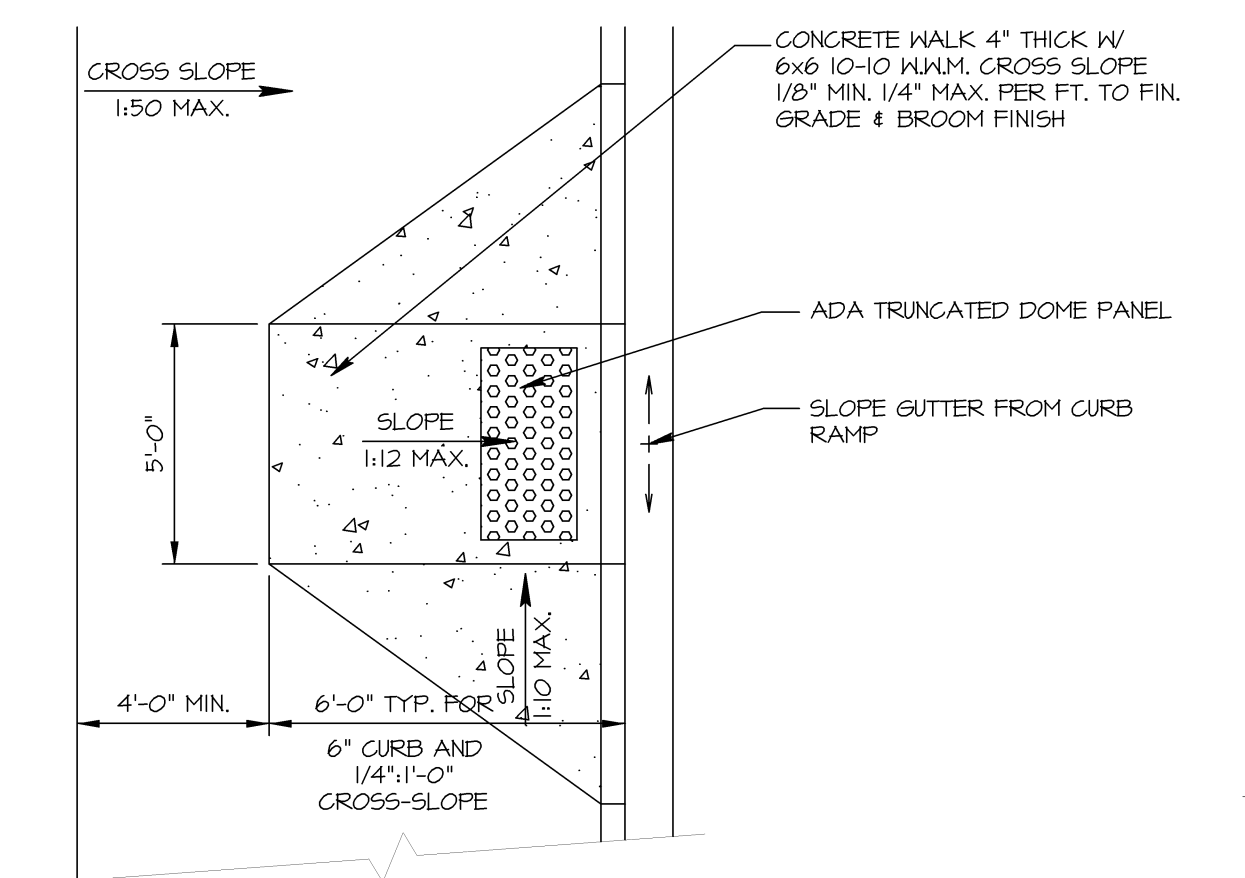
1 STORM CATCHBASIN
N.T.S.



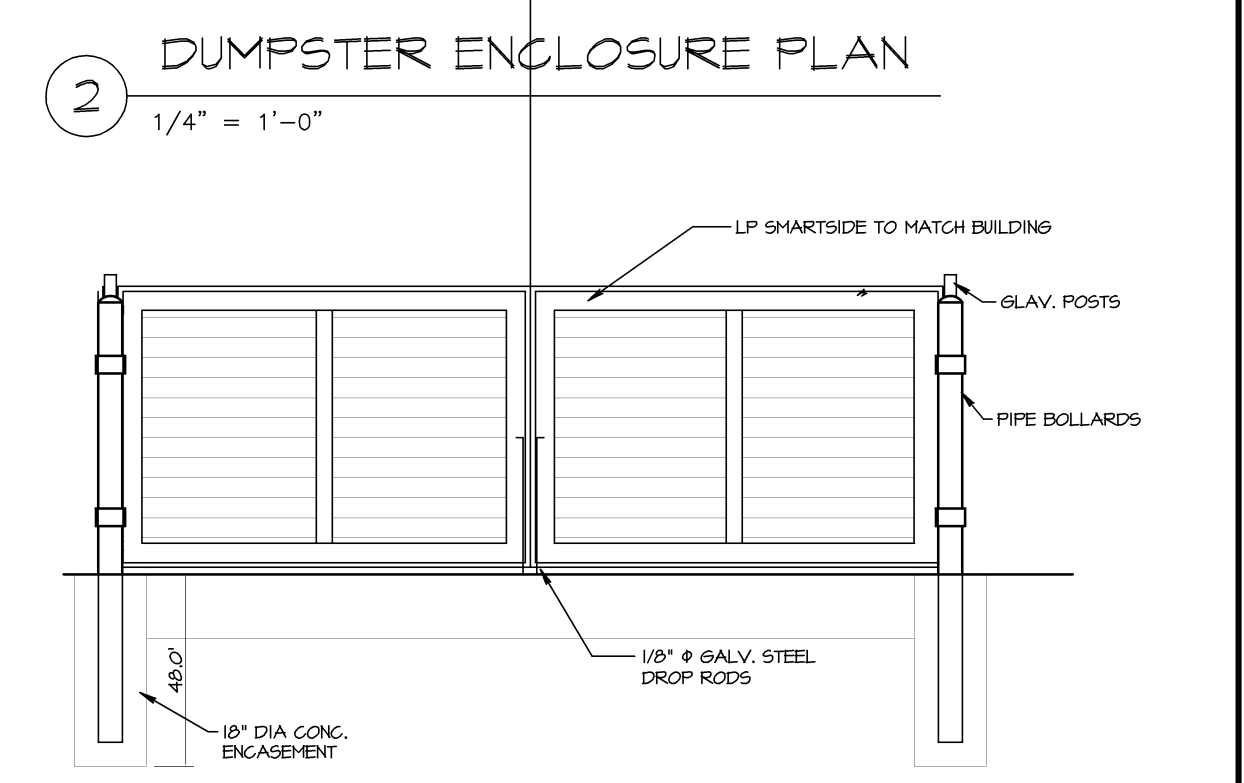
6 HANDICAP RAMP
N.T.S.



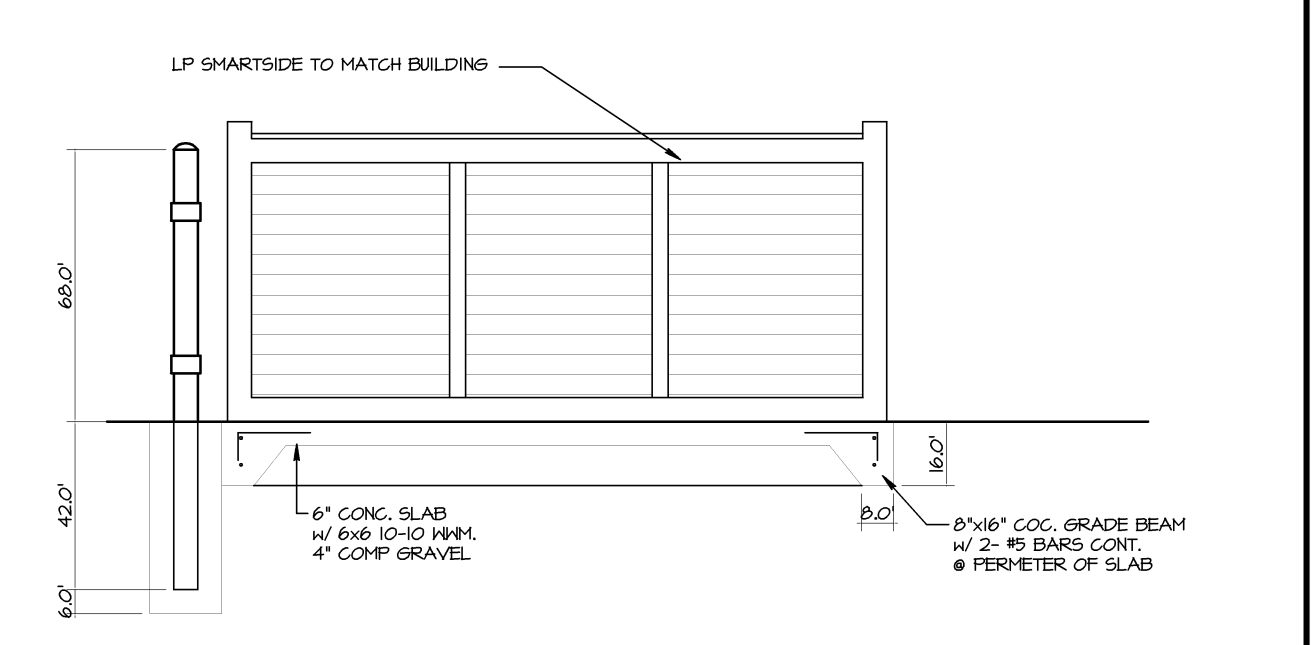
2 DUMPSTER ENCLOSURE PLAN
1/4" = 1'-0"



7 ADA RAMP
N.T.S.



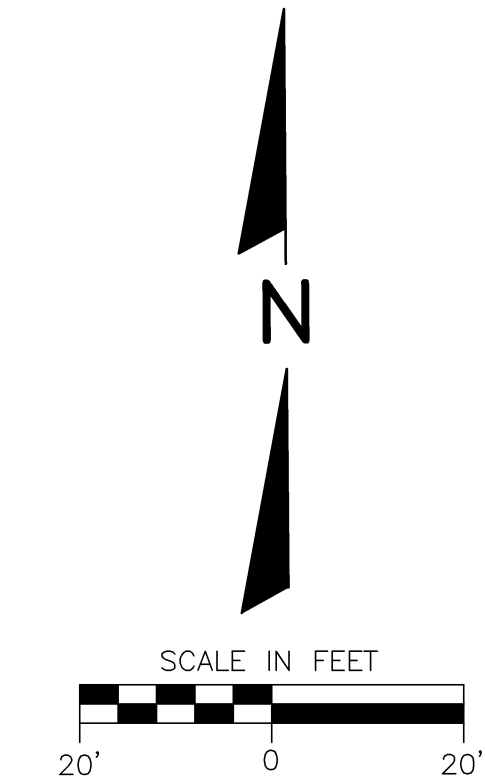
3 DUMPSTER ENCLOSURE FRONT
1/4" = 1'-0"

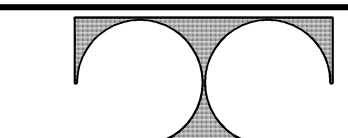


4 DUMPSTER ENCLOSURE SIDE
1/4" = 1'-0"

GENERAL NOTES:

- 1.) ALL SPOT GRADES ARE FLOW LINE OR EDGE OF PAVEMENT UNLESS OTHERWISE NOTED.
- 2.) Storm Pipe- HDPE ASTM F 405



REVISIONS:		TDI ASSOCIATES, INC		OWNERSHIP OF DOCUMENTS	
NOTE	DATE	All Rights Reserved		This document and the ideas and design incorporated herein, as an instrument of professional service, is the sole property of TDI Associates, Inc. and it shall be held in whole or in part for any other project or purpose without the expressed written authorization of TDI Associates, Inc.	
		N8 W2290 JOHNSON DRIVE, SUITE B4 WAUKESHA, WISCONSIN 53186 PHONE 262-469-2530 FAX 262-469-2531		 TDI ASSOCIATES, INC. ARCHITECTURE, ENGINEERING, PLANNING	
CITY OF WAUKESHA, WI					
PIZZA RANCH - FLEETWOOD DRIVE					
SITE GRADING/DRAINAGE PLAN					
SCALE: 1"= 20'-0"		JOB NO: 15-383.000		DATE: 07-10-17	
DESIGNED BY: ROB		DRAWN BY: ROB		CHECKED BY:	
APPROVED BY:					
ENGINEER		DATE		SHEET C-3.0	