

SITE PLAN

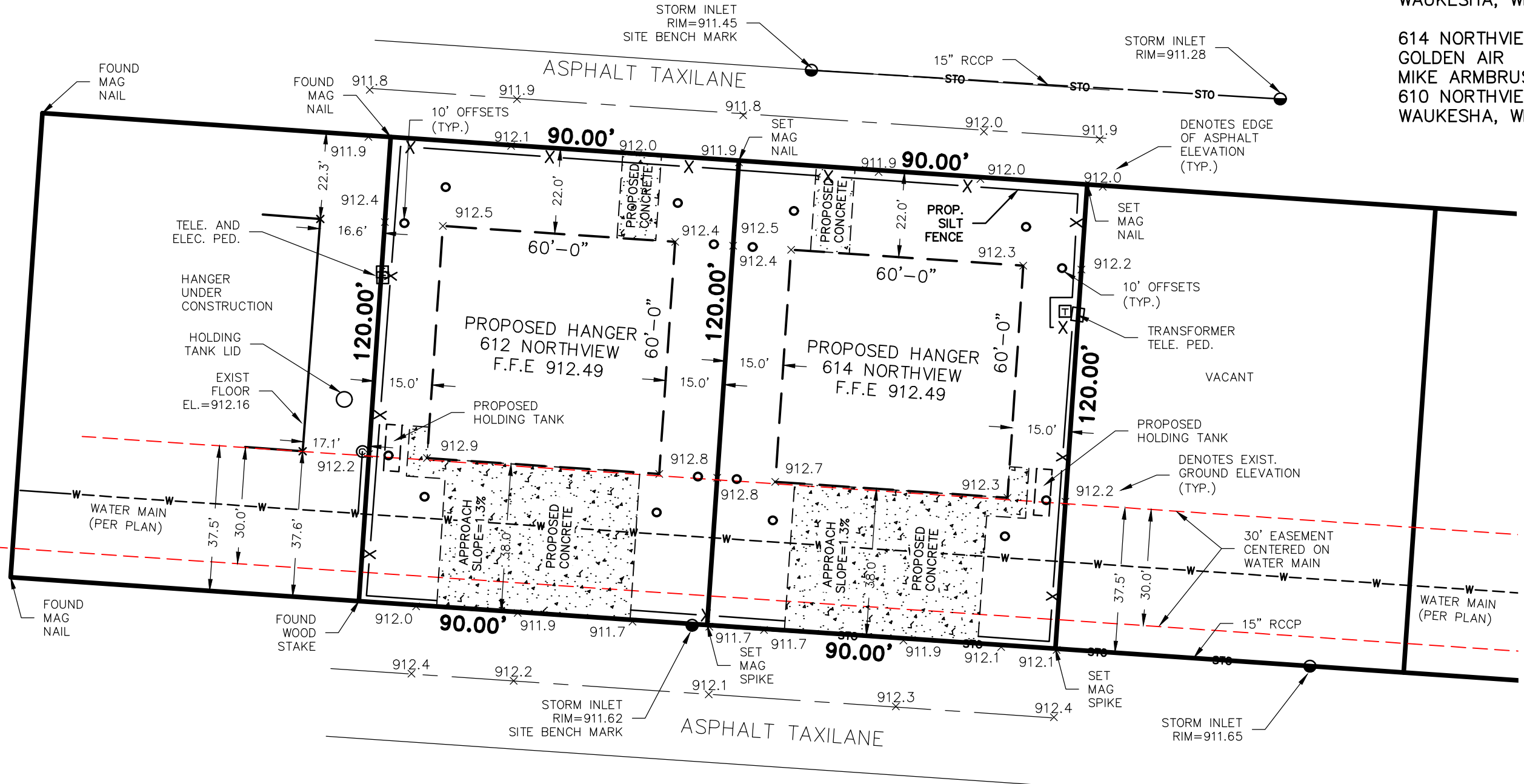
612 AND 614 NORTHVIEW, WAUKESHA COUNTY AIRPORT, WAUKESHA, WISCONSIN

PREPARED BY:
 raSmith
 WILLIAM R. HENRICHS PLS
 16745 W. BLUEMOUND RD.
 BROOKFIELD, WI. 53005-5938
 262-317-3265

169420 WRH
 JULY 8, 2024

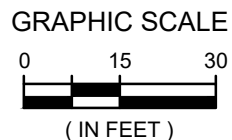
PREPARED FOR:
 612 NORTHVIEW
 TEN MILE, LLC
 MIKE ARMBRUSTER
 610 NORTHVIEW ROAD
 WAUKESHA, WI 53188

614 NORTHVIEW
 GOLDEN AIR
 MIKE ARMBRUSTER
 610 NORTHVIEW ROAD
 WAUKESHA, WI 53188



R.A.SMITH, INC. ASSUMES NO RESPONSIBILITY FOR DAMAGES, LIABILITY OR COSTS RESULTING FROM CHANGES OR ALTERATIONS MADE TO THIS PLAN WITHOUT THE EXPRESSED WRITTEN CONSENT OF R.A.SMITH, INC.

ALL COPYRIGHTS TO THESE DRAWINGS ARE RESERVED. THEY MAY NOT BE COPIED, CHANGED, OR ASSIGNED TO ANY THIRD PARTY IN ANY MANNER WITHOUT OBTAINING THE EXPRESSED WRITTEN PERMISSION OF R.A.SMITH, INC.



raSmith
 CREATIVITY BEYOND ENGINEERING
 16745 W. Bluemound Road
 Brookfield, WI 53005-5938
 (262) 781-1000
 rasmith.com

S:\5169420\Dwg\169420 POS.dwg, 11 x 17 (B), 7/10/2024 12:07:32 PM, wrh