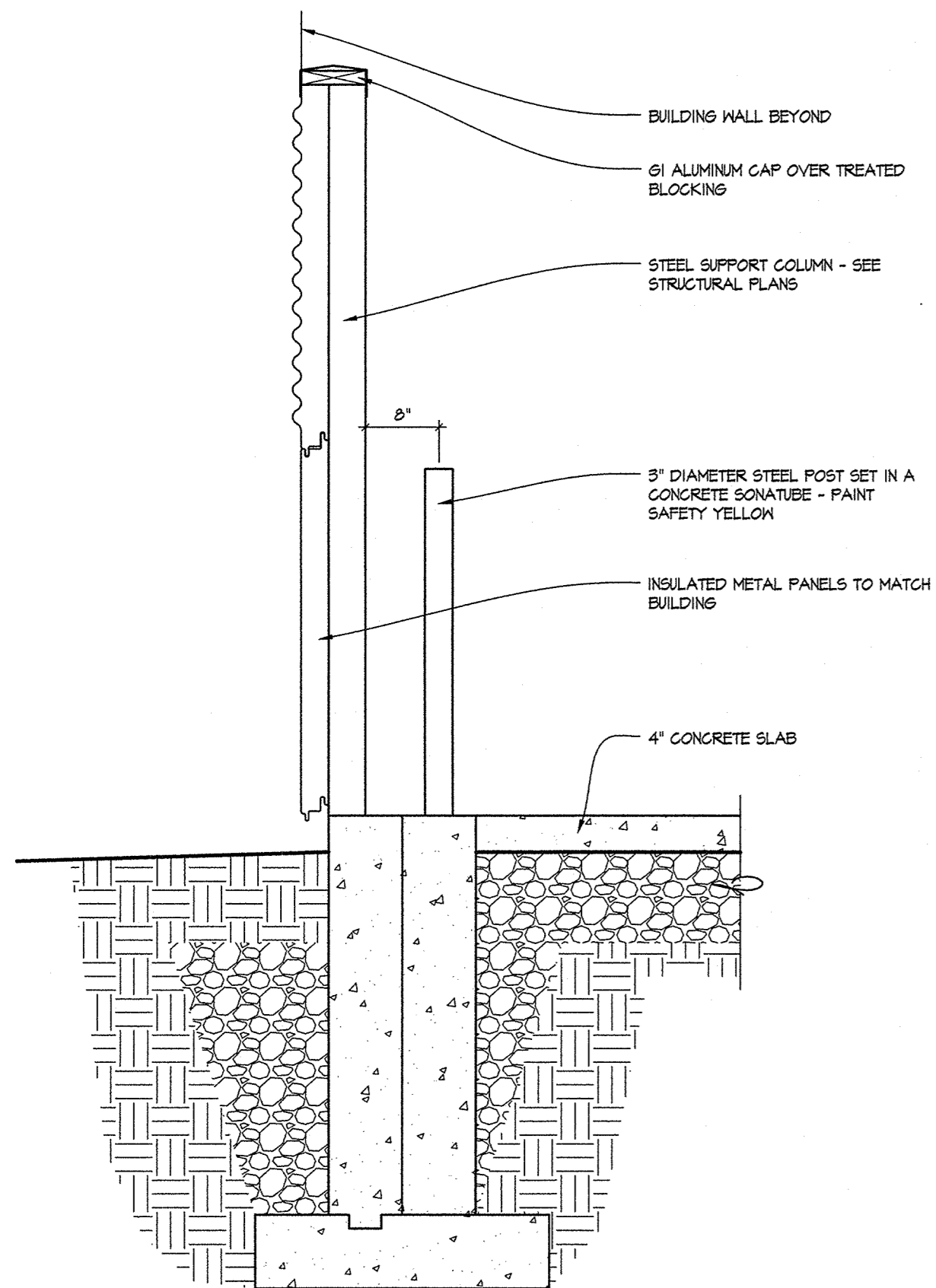
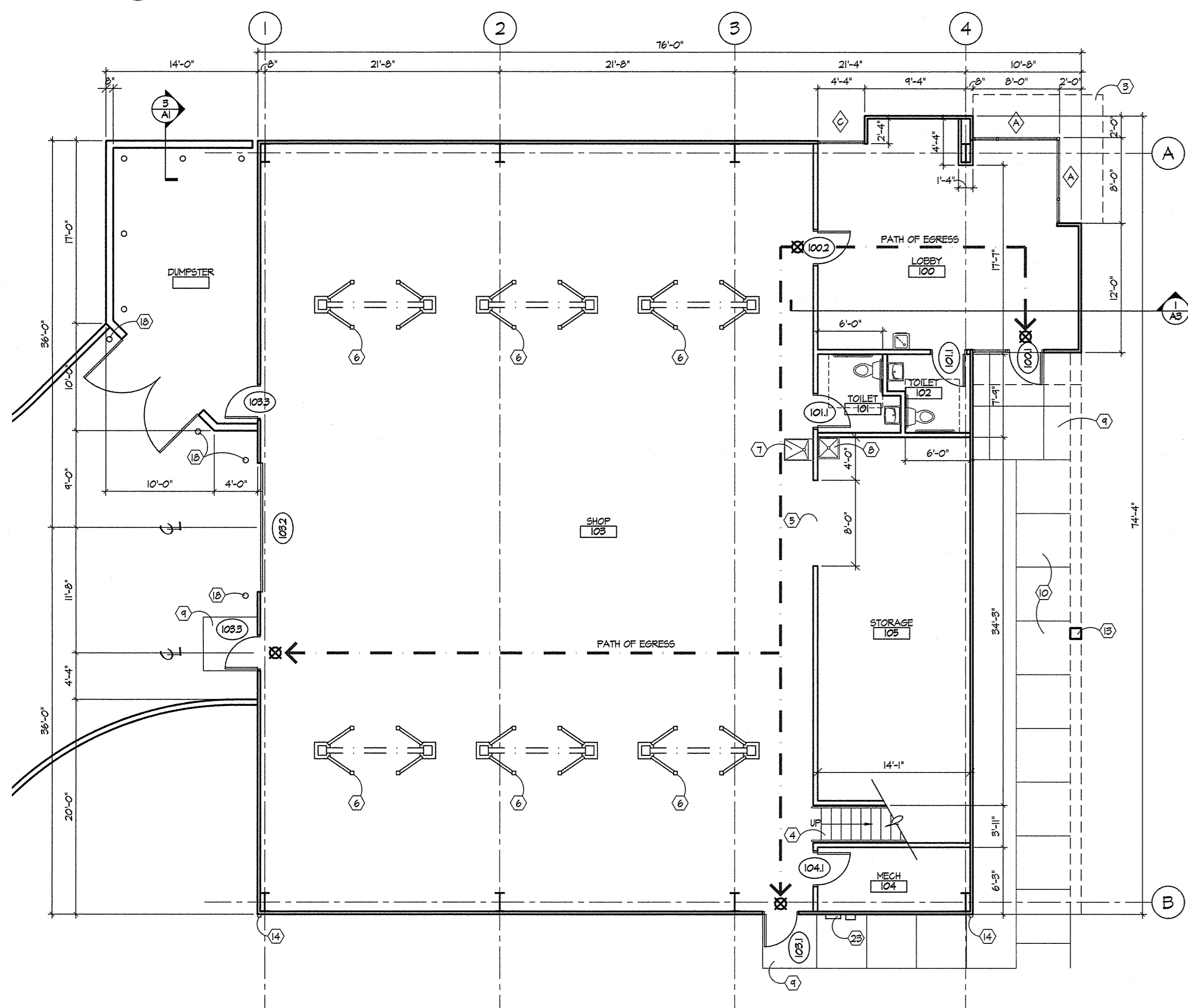


Project:  
**Milwaukee Motorwerks**  
Corporate Ct. & Corporate Dr.  
Waukesha, WI 53189

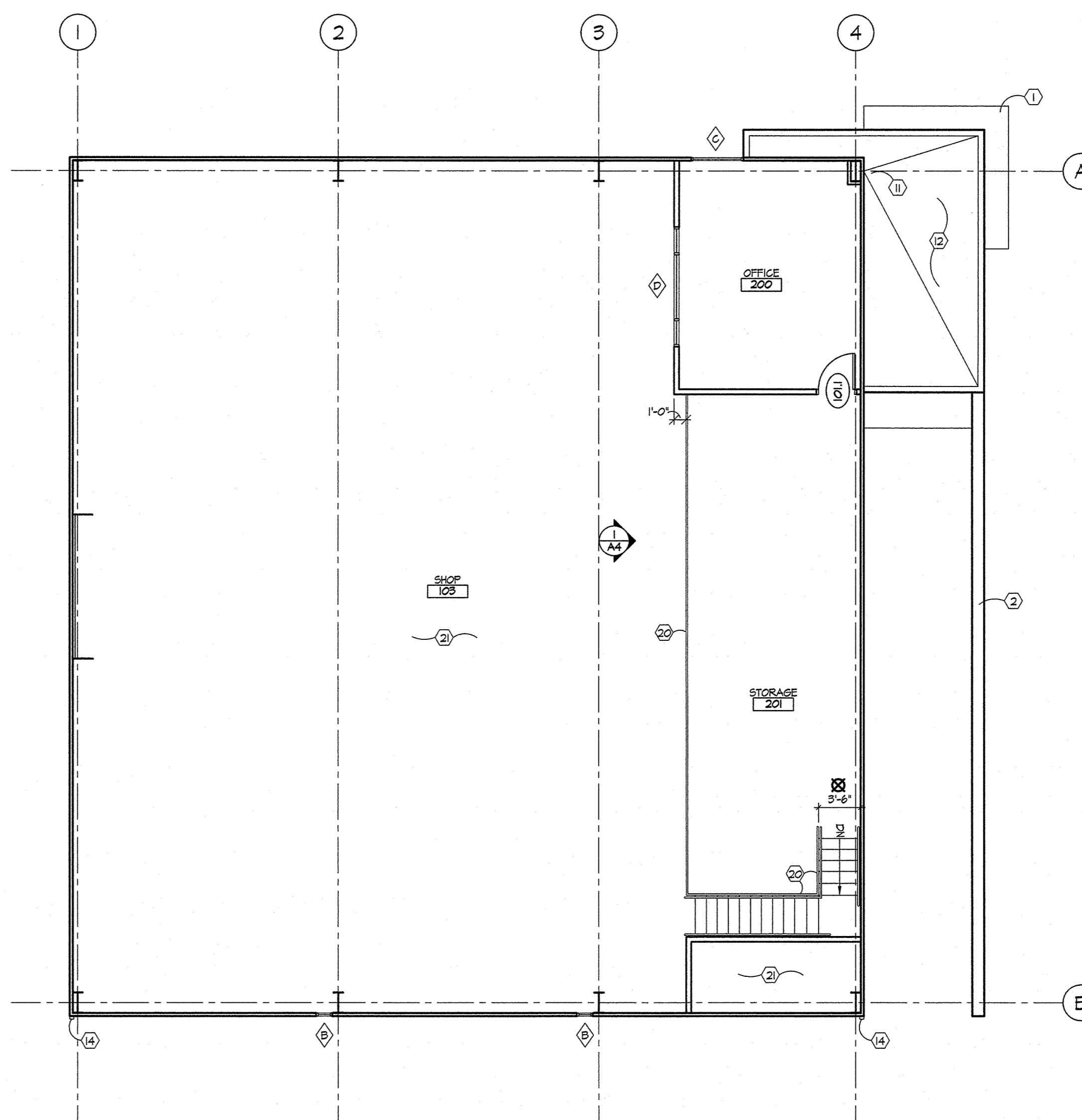
Contractor: \_\_\_\_\_



3 WALL SECTION @ DUMPSTER  
3/4" = 1'-0"



1 FLOOR PLAN - LEVEL ONE  
1/8" = 1'-0"



2 FLOOR PLAN - MEZZANINE  
1/8" = 1'-0"

FLOOR PLAN CONSTRUCTION NOTES:

- 1 WINDOW LID OVERHANG
- 2 STEEL COLUMN / BEAM BY OWNER
- 3 WE ENERGIES TRANSFORMER
- 4 STAIRWAY
- 5 7'-0" H x 8'-0" W OPENING
- 6 CAR LIFTS BY OWNER - PLACEMENT T.B.D.
- 7 UTILITY SINK
- 8 JANITOR SINK
- 9 CONCRETE STOOP
- 10 CONCRETE WALK
- 11 ROOF DRAIN
- 12 EPDM ROOF
- 13 STEEL SIGN SUPPORT
- 14 DOWNSPOUT
- 15 FIRE EXTINGUISHER CABINET
- 16 ELECTRIC WATER COOLER
- 17 WINDOW - SEE ELEVATIONS
- 18 3-1/2" DIA. CONCRETE FILLED BOLLARD, PAINT SAFETY YELLOW
- 19 CLEAR EXIT PATH
- 20 HM HANDRAIL
- 21 OPEN TO BELOW
- 22 GARAGE DOOR OPENER
- 23 UTILITY CONNECTIONS

COPYRIGHT Keller Architectural Design, LLC. 2019  
ALL RIGHTS RESERVED  
THIS DRAWING IS NOT TO BE REPRODUCED, CHANGED, COPIED OR ASSIGNED TO ANY THIRD PARTY IN ANY FORM OR MANNER WITHOUT FIRST OBTAINING THE EXPRESSED WRITTEN PERMISSION OF Keller Architectural Design, LLC. THE CLIENT AGREES TO INDEMNIFY AND HOLD THE ARCHITECT HARMLESS FROM ANY DAMAGES, LIABILITY, OR COST, INCLUDING ATTORNEY'S FEES AND COSTS OF DEFENSE ARISING FROM ANY CHANGES OR ALTERATIONS MADE BY ANYONE OTHER THAN THE ARCHITECT, OR FROM ANY REUSE OF THE DRAWINGS OR DATA WITHOUT THE PRIOR WRITTEN CONSENT OF THE ARCHITECT.

Revisions: \_\_\_\_\_

Date	Number	Description

Sheet Title: \_\_\_\_\_

FLOOR PLAN

Project No.: 19.2

Date: September 12, 2019

Sheet No.: \_\_\_\_\_