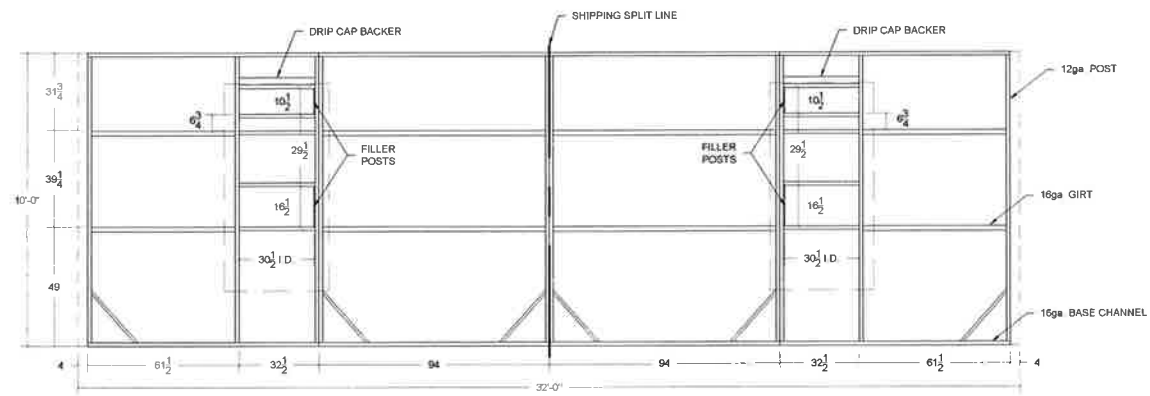
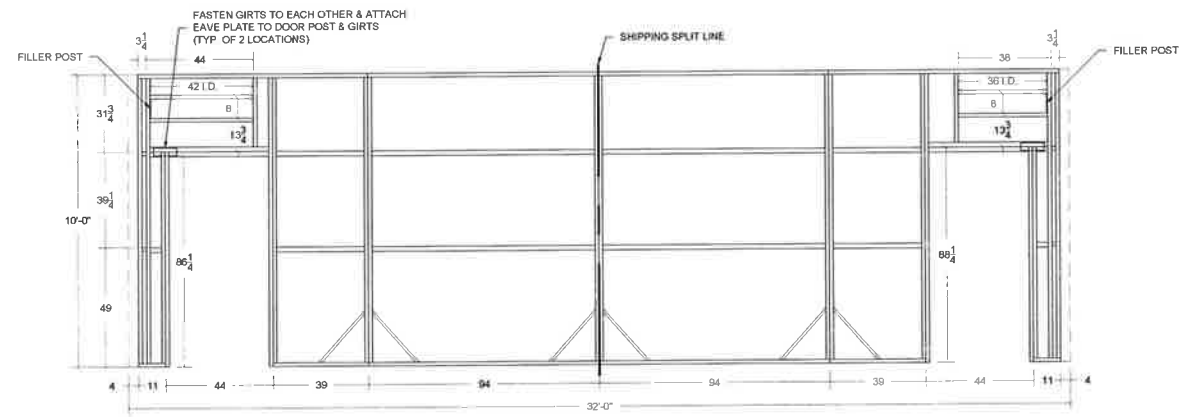


N:\1 Project Files\11600PROJ\11615\11615 LAYOUT.dwg, 6/10/2013 8:54:58 AM, , DWG To PDF.pc3

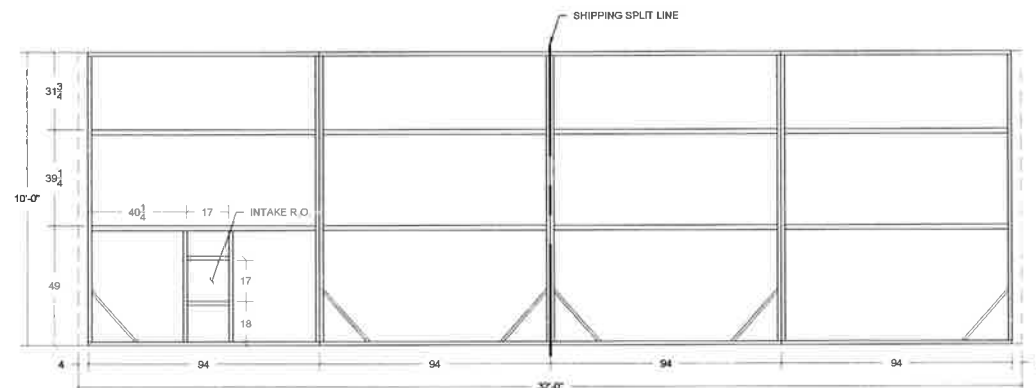


WALL A

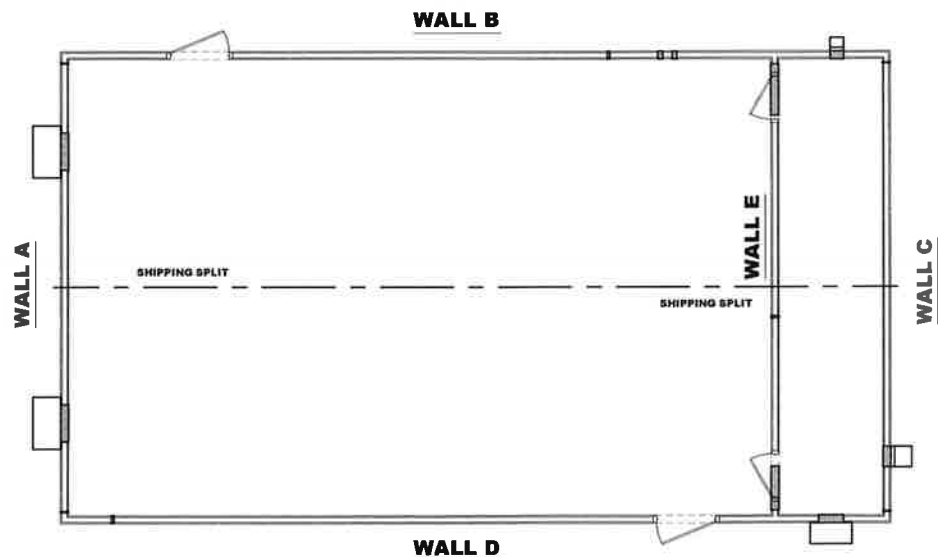


WALL E

AS VIEWED FROM WALL A



WALL C



- GENERAL NOTES**
- 1) ALL WALLS ARE VIEWED FROM THE OUTSIDE
 - 2) 4" CHANNELFRAME
 - 3) MATERIAL 16ga UNLESS OTHERWISE NOTED
 - 4) GIRT DIMENSIONS ARE TO THE TOP OF THE GIRT
 - 5) SIDE WALLS HAVE 12ga BRACING. CENTER BAYS ON SIDE WALLS HAVE CROSS BRACING. OTHER BAYS HAVE A SINGLE BRACE. BRACING IS WELDED TO STRUCTURAL FRAMEWORK AND SHEETED OVER
 - 6) THERE IS A 16ga PLATE WELDED ABOVE SIDE WALL DOORS
 - 7) THE BASE CHANNEL IS WELDED TO THE PERIMETER ANGLE WITH A 7/8" PLUG WELD EVERY 16"
 - 8) WALL MOUNTED HAT CHANNEL IS SHOWN ON THE INTERIOR ELEVATIONS (SEE S-S SHEETS)

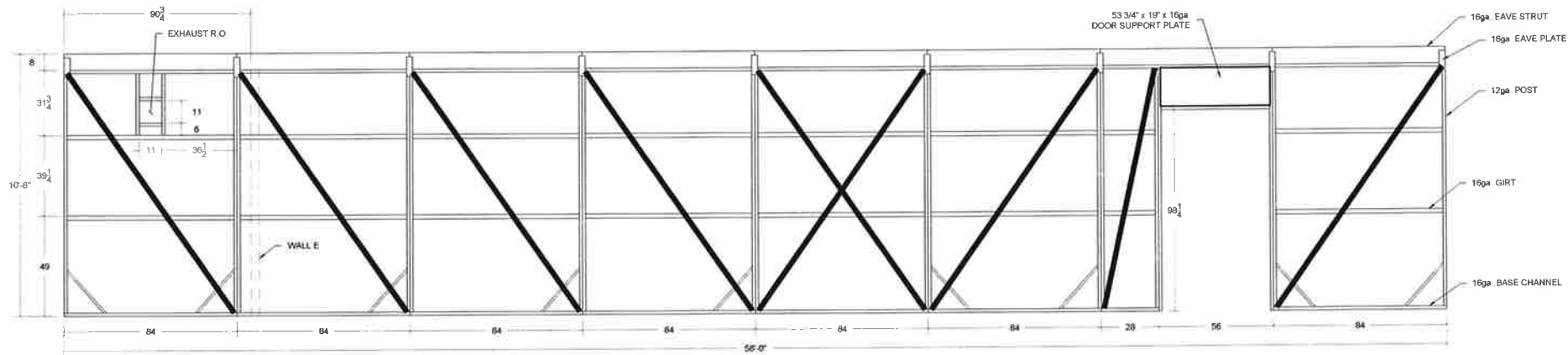
RELEASE	DATE
RELEASED TO WELD	22-MAY-13
RELEASED TO STRUCTURE	22-MAY-13
RELEASED TO ELECTRICAL	XX-XXX-XX

DATE	DRAWING HISTORY	DWG/APP	DATE	DRAWING HISTORY	DWG/APP	DATE	DRAWING HISTORY	DWG/APP
19-APR-13	INITIAL STRUCTURAL DRAWINGS	MEH/DGF						
19-APR-13	INITIAL ELECTRICAL DRAWINGS	ACH/DMC						
08-MAY-13	ENGINEERING COMMENTS	DGF/JW						
09-MAY-13	ADDED CABLETRAY	ACH/CJJ						
24-MAY-13	CUSTOMER REVISIONS	ACH/DMC						
10-JUN-13	REMOVED OPENING IN WALL E	ACH/CJJ						

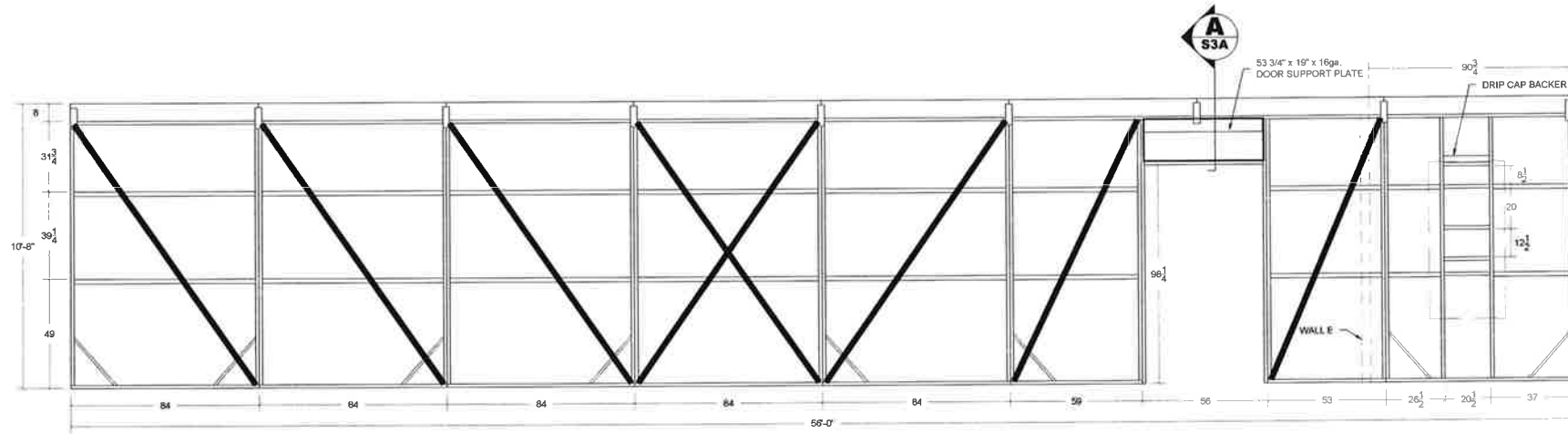
JOB DESCRIPTION:	HDR CONSTRUCTORS, INC 32'-0" x 56'-0" x 10'-8" ULYSSES, KS
SHEET TITLE:	STRUCTURAL FRAMING WALLS A, C, & E

TRACHTE Trachte, Inc.
ALL RIGHTS RESERVED
422 NORTH BURR OAK AVENUE
OREGON, WI 53575
PHONE: 608/835-5707 FAX: 608/835-7279
E-MAIL: DESIGN@TRACHTEUSA.COM

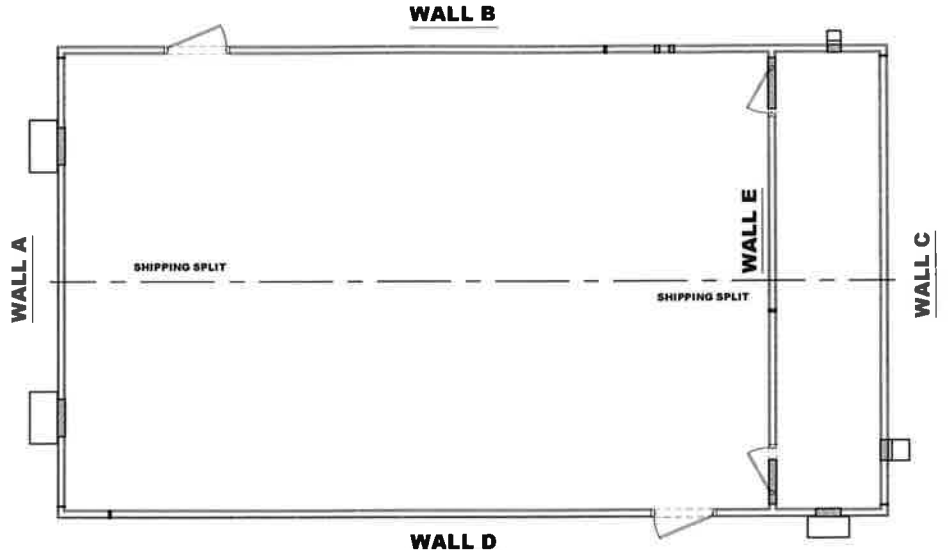
MODEL # HD2256
TRACHTE JOB #
11615
SHEET # 4 OF 21
S3



WALL B

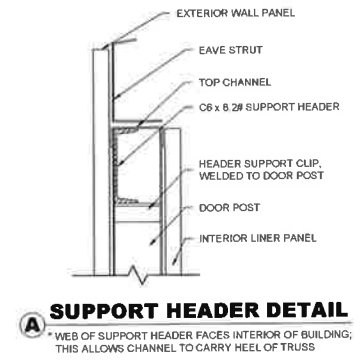


WALL D



GENERAL NOTES

- 1) ALL WALLS ARE VIEWED FROM THE OUTSIDE
- 2) 4" CHANNELFRAME
- 3) MATERIAL 16ga. UNLESS OTHERWISE NOTED
- 4) GIRT DIMENSIONS ARE TO THE TOP OF THE GIRT
- 5) SIDE WALLS HAVE 12ga BRACING. CENTER BAYS ON SIDE WALLS HAVE CROSS BRACING. OTHER BAYS HAVE A SINGLE BRACE BRACING IS WELDED TO STRUCTURAL FRAMEWORK AND SHEETED OVER.
- 6) THERE IS A 16ga. PLATE WELDED ABOVE SIDE WALL DOORS.
- 7) THE BASE CHANNEL IS WELDED TO THE PERIMETER ANGLE WITH A 7/8" PLUG WELD EVERY 16"
- 8) WALL MOUNTED HAT CHANNEL IS SHOWN ON THE INTERIOR ELEVATIONS (SEE S-4 SHEETS)



RELEASE	DATE
RELEASED TO WELD	22-MAY-13
RELEASED TO STRUCTURE	22-MAY-13
RELEASED TO ELECTRICAL	XX-XXX-XX

DATE	DRAWING HISTORY	DWG/APP	DATE	DRAWING HISTORY	DWG/APP	DATE	DRAWING HISTORY	DWG/APP
19-APR-13	INITIAL STRUCTURAL DRAWINGS	MEH/DCF						
19-APR-13	INITIAL ELECTRICAL DRAWINGS	ACH/DMC						
08-MAY-13	ENGINEERING COMMENTS	DOF/JW						
09-MAY-13	ADDED CABLETRAY	ACH/CJJ						
24-MAY-13	CUSTOMER REVISIONS	ACH/DMC						
10-JUN-13	REMOVED OPENING IN WALL E	ACH/CJJ						

JOB DESCRIPTION:	HDR CONSTRUCTORS, INC 32'-0" x 56'-0" x 10'-8" ULYSSES, KS
SHEET TITLE:	STRUCTURAL FRAMING WALLS B & D

TRACHTE Trachte, Inc.
ALL RIGHTS RESERVED
422 NORTH BURR OAK AVENUE
OREGON, WI 53575
PHONE: 608/835-5707 FAX: 608/835-7279
E-MAIL: DESIGN@TRACHTEUSA.COM

MODEL # HD3256
TRACHTE JOB #
11615
SHEET # 5 OF 21
S3A

N:\1 Project Files\11600PROJ\11615\11615 LAYOUT.dwg, 6/10/2013 8:55:00 AM, DWG To PDF.pc3