

"BUILDING RELATIONSHIPS WITH A COMMITMENT TO CLIENT SATISFACTION THROUGH TRUST, QUALITY AND EXPERIENCE"

- CIVIL ENGINEERING
- SURVEYING & MAPPING
- CONSTRUCTION SERVICES
- WATER RESOURCES
- PLANNING & DEVELOPMENT
- TRANSPORTATION ENGINEERING
- LANDSCAPE ARCHITECTURE

MILWAUKEE REGIONAL OFFICE  
 N22 W22931 NANCY'S COURT SUITE 3  
 WAUKESHA, WISCONSIN 53186  
 262.513.0666 PHONE | 262.513.1232 FAX  
 MADISON | MILWAUKEE  
 KENOSHA | APPLETON  
 www.jsdinc.com

SERVICES PROVIDED TO:  
  
 Real Estate Development

PROJECT:  
**DENTAL ASSOCIATES**

PROJECT LOCATION:  
 WAUKESHA  
 WAUKESHA COUNTY, WI

JSD PROJECT NO.: 15-6779

SEAL/SIGNATURE:

ALTHOUGH EVERY EFFORT HAS BEEN MADE IN PREPARING THESE PLANS AND CHECKING THEM FOR ACCURACY, THE CONTRACTOR AND SUBCONTRACTORS MUST CHECK ALL DETAIL AND DIMENSIONS OF THEIR TRADE AND BE RESPONSIBLE FOR THE SAME.

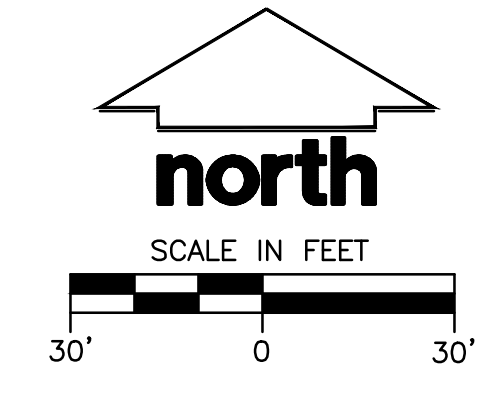
DESIGN BY: TAG 5-20-15  
 DRAWN BY: TAG 5-20-15  
 CHECKED BY:

PLAN MODIFICATIONS:	DATE:
CITY SUBMITTAL	07-13-15

**DIGGERS HOTLINE**  
 Call 811 or (800) 242-8511  
 Milwaukee Area (262) 432-7910  
 Hearing Impaired TDD (800) 542-2289  
 www.DiggersHotline.com

SHEET TITLE:  
**PAVEMENT ID & DIMENSIONED SITE PLAN**

SHEET NUMBER:  
**C100**



**SHEET INDEX**

C100	PAVEMENT ID & DIMENSIONED SITE PLAN
C200	GRADING & EROSION CONTROL PLAN
C300	UTILITY PLAN
C301	WATER MAIN PLAN & PROFILE
C400	NOTES & DETAILS
C401	NOTES & DETAILS

**PAVING NOTES**

**1. GENERAL**

- ALL PAVING SHALL CONFORM TO "STATE OF WISCONSIN STANDARD SPECIFICATIONS FOR HIGHWAY & STRUCTURE CONSTRUCTION, LATEST EDITION, APPLICABLE CITY OF WAUKESHA ORDINANCES AND THE GEOTECHNICAL REPORT.
- ALL PAVING DIMENSIONS ARE TO FACE OF CURB UNLESS SPECIFIED OTHERWISE.
- SURFACE PREPARATION - NOTIFY CONTRACTOR OF UNSATISFACTORY CONDITIONS. DO NOT BEGIN PAVING WORK UNTIL DEFICIENT SUBBASE AREAS HAVE BEEN CORRECTED AND ARE READY TO RECEIVE PAVING.

**2. PAVEMENT STRUCTURE**

- LIGHT DUTY PAVEMENT**  
 8" CRUSHED AGGREGATE BASE COURSE (1-1/4" DENSE GRADED BASE)  
 1.75" ASPHALTIC CONCRETE BASE  
 1.25" ASPHALTIC CONCRETE SURFACE
- HEAVY DUTY PAVEMENT**  
 10" CRUSHED AGGREGATE BASE COURSE  
 3" ASPHALTIC CONCRETE BASE  
 2" ASPHALTIC CONCRETE SURFACE
- CONCRETE PAVEMENT**  
 6" CRUSHED AGGREGATE BASE COURSE  
 7" FIBER-REINFORCED CONCRETE
- CONCRETE SIDEWALK**  
 6" CRUSHED AGGREGATE BASE COURSE  
 5" CONCRETE

**3. ASPHALTIC CONCRETE PAVING SPECIFICATIONS**

- CODES AND STANDARDS** - THE PLACING, CONSTRUCTION AND COMPOSITION OF THE ASPHALTIC BASE COURSE AND ASPHALTIC CONCRETE SURFACE COURSE SHALL BE IN ACCORDANCE WITH THE REQUIREMENTS OF SECTIONS 450, 455, 460 AND 465 OF THE STATE OF WISCONSIN STANDARD SPECIFICATIONS FOR HIGHWAY AND STRUCTURE CONSTRUCTION, EDITION OF 2005. HEREAFTER, THIS PUBLICATION WILL BE REFERRED TO AS STATE HIGHWAY SPECIFICATIONS.
- WEATHER LIMITATIONS** - APPLY TACK COATS WHEN AMBIENT TEMPERATURE IS ABOVE 50° F (10° C) AND WHEN TEMPERATURE HAS NOT BEEN BELOW 35° F (1° C) FOR 12 HOURS IMMEDIATELY PRIOR TO APPLICATION. DO NOT APPLY WHEN BASE IS WET OR CONTAINS EXCESS OF MOISTURE. CONSTRUCT ASPHALTIC CONCRETE SURFACE COURSE WHEN ATMOSPHERIC TEMPERATURE IS ABOVE 40° F (4° C) AND WHEN BASE IS DRY AND WHEN WEATHER IS NOT RAINY. BASE COURSE MAY BE PLACED WHEN AIR TEMPERATURE IS ABOVE 30° F (-1° C).
- GRADE CONTROL** - ESTABLISH AND MAINTAIN REQUIRED LINES AND ELEVATIONS FOR EACH COURSE DURING CONSTRUCTION.
- CRUSHED AGGREGATE BASE COURSE** - THE TOP LAYER OF BASE COURSE SHALL CONFORM TO SECTIONS 301 AND 305, STATE HIGHWAY SPECIFICATIONS.
- BINDER COURSE AGGREGATE** - THE AGGREGATE FOR THE BINDER COURSE SHALL CONFORM TO SECTIONS 460 AND 315, STATE HIGHWAY SPECIFICATIONS.
- SURFACE COURSE AGGREGATE** - THE AGGREGATE FOR THE SURFACE COURSE SHALL CONFORM TO SECTIONS 460 AND 465, STATE HIGHWAY SPECIFICATIONS.
- ASPHALTIC MATERIALS** - THE ASPHALTIC MATERIALS SHALL CONFORM TO SECTION 455 AND 460, STATE HIGHWAY SPECIFICATIONS.

**4. CONCRETE PAVING SPECIFICATIONS**

- CONCRETE PAVING SHALL BE IN ACCORDANCE WITH THE REQUIREMENTS OF SECTIONS 415 AND 416 OF THE STATE HIGHWAY SPECIFICATIONS.
- CONCRETE PAVEMENT SHALL BE REINFORCED WITH NOVOMESH 950 (OR EQUAL) FIBER REINFORCEMENT.
- CURING COMPOUNDS SHALL CONFORM TO SECTION 415 OF THE STATE HIGHWAY SPECIFICATIONS.



"BUILDING RELATIONSHIPS WITH A COMMITMENT TO CLIENT SATISFACTION THROUGH TRUST, QUALITY AND EXPERIENCE"

- CIVIL ENGINEERING
- SURVEYING & MAPPING
- CONSTRUCTION SERVICES
- WATER RESOURCES
- PLANNING & DEVELOPMENT
- TRANSPORTATION ENGINEERING
- LANDSCAPE ARCHITECTURE

MILWAUKEE REGIONAL OFFICE  
 N22 W22931 NANCY'S COURT SUITE 3  
 WAUKESHA, WISCONSIN 53186  
 262.513.0666 PHONE | 262.513.1232 FAX

MADISON | MILWAUKEE  
 KENOSHA | APPLETON  
 www.jsdinc.com

SERVICES PROVIDED TO:

**Interstate Partners LLC**  
 Real Estate Development

PROJECT:  
**DENTAL ASSOCIATES**

PROJECT LOCATION:  
 WAUKESHA  
 WAUKESHA COUNTY, WI

JSD PROJECT NO.: 15-6779

SEAL/SIGNATURE:

ALTHOUGH EVERY EFFORT HAS BEEN MADE IN PREPARING THESE PLANS AND CHECKING THEM FOR ACCURACY, THE CONTRACTOR AND SUBCONTRACTORS MUST CHECK ALL DETAIL AND DIMENSIONS OF THEIR TRADE AND BE RESPONSIBLE FOR THE SAME.

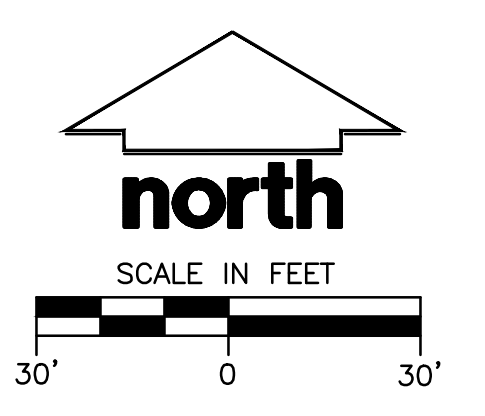
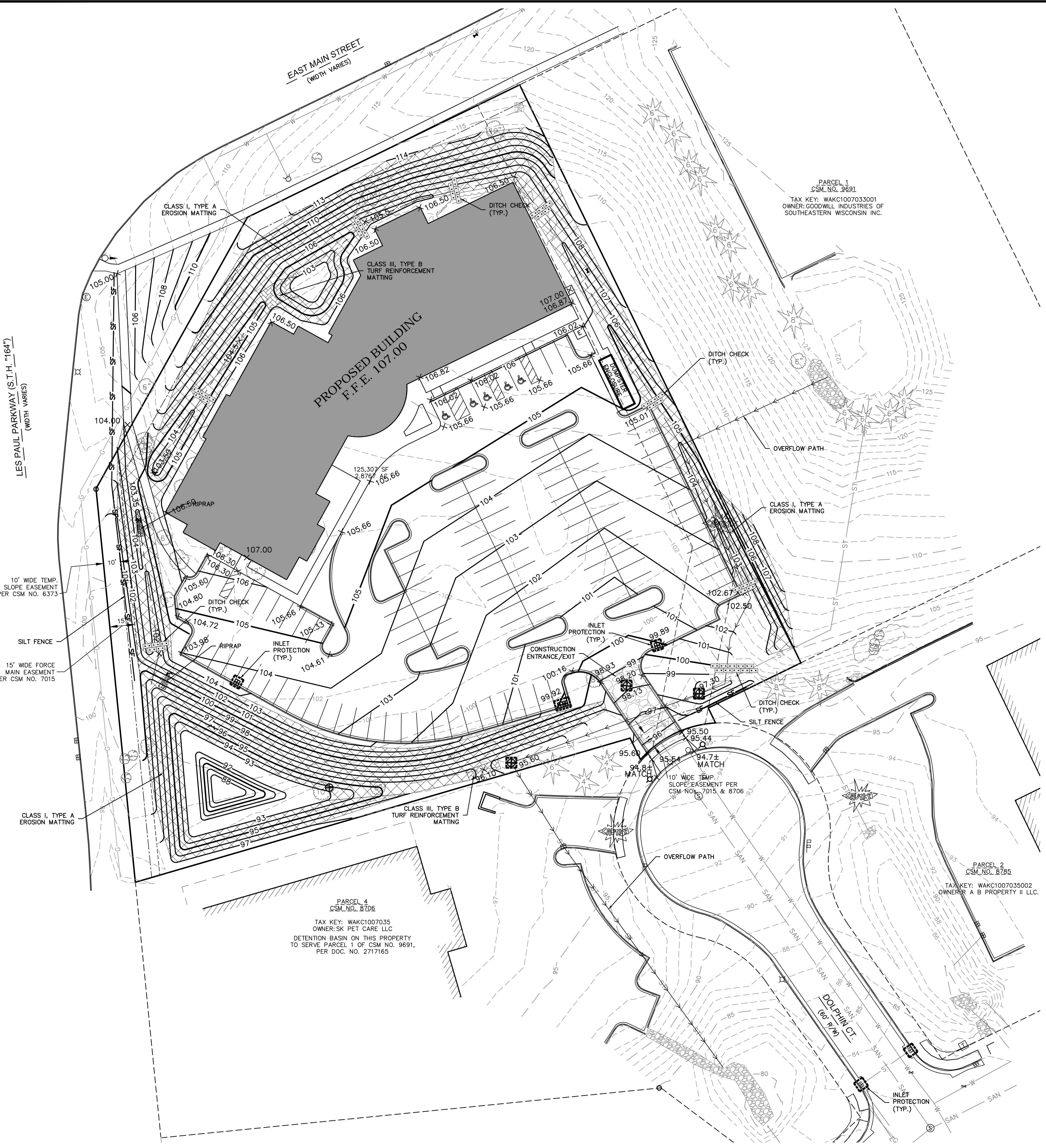
DESIGN BY: TAG 5-20-15  
 DRAWN BY: TAG 5-20-15  
 CHECKED BY:

PLAN MODIFICATIONS: DATE:  
 CITY SUBMITTAL 07-13-15

**DIGGERS HOTLINE**  
 Call 811 or (800) 242-8511  
 Milwaukee Area (262) 432-7910  
 Hearing Impaired TDD (800) 542-2289  
 www.DiggersHotline.com

SHEET TITLE:  
**GRADING PLAN**

SHEET NUMBER:  
**C200**



**LEGEND**

	PROPOSED CATCH BASIN
	PROPOSED STORM MANHOLE
	INLET PROTECTION
	SILT FENCE (SEE DETAIL)
	PROPOSED STORM SEWER
	PROPOSED 1' CONTOUR
	PROPOSED 5' CONTOUR
	CONSTRUCTION ENTRANCE
	TURF REINFORCEMENT MAT
	DITCH CHECK (STRAW BALES)

**GENERAL GRADING NOTES:**

1. CONTRACTOR SHALL VERIFY ALL GRADES, MAKE SURE ALL AREAS DRAIN PROPERLY AND SHALL REPORT ANY DISCREPANCIES TO THE ENGINEER OF RECORD PRIOR TO THE START OF ANY CONSTRUCTION ACTIVITIES.
2. ALL PROPOSED GRADES SHOWN ARE FINISHED GRADES. PARKING LOT AND DRIVEWAY ELEVATIONS ARE PAVEMENT GRADES, NOT TOP OF CURB GRADES, UNLESS OTHERWISE NOTED.
3. WORK WITHIN THE DOLPHIN COURT AND EAST MAIN STREET RIGHT-OF-WAY SHALL BE COORDINATED WITH THE APPROPRIATE CITY OF WAUKESHA OFFICIALS PRIOR TO COMMENCEMENT OF ANY CONSTRUCTION ACTIVITIES. ALL GRADING WITHIN THE RIGHT-OF-WAY IS SUBJECT TO APPROVAL BY SAID OFFICIALS.
4. THE CONTRACTOR SHALL ASSUME SOLE RESPONSIBILITY FOR THE COMPUTATIONS OF ALL GRADING QUANTITIES. WHILE JSD ATTEMPTS TO PROVIDE A COST EFFECTIVE APPROACH TO BALANCE EARTHWORK, GRADING DESIGN IS BASED ON MANY FACTORS, INCLUDING SAFETY, AESTHETICS, AND COMMON ENGINEERING STANDARD OF CARE, THEREFORE NO GUARANTEE CAN BE MADE FOR A BALANCED SITE.

**CONSTRUCTION SITE SEQUENCING**

1. INSTALL PERIMETER SILT FENCE AND TEMPORARY CONSTRUCTION ENTRANCE.
  2. ROUGH GRADE DETENTION POND AND INSTALL POND OUTLET.
  3. STRIP AND STOCKPILE TOPSOIL, INSTALL SILT FENCE AROUND PERIMETER OF STOCKPILE.
  4. CONDUCT ROUGH GRADING EFFORTS AND INSTALL CHECK DAMS WITHIN DRAINAGE DITCHES AS NEEDED.
  5. INSTALL UTILITY PIPING AND STRUCTURES, IMMEDIATELY INSTALL INLET PROTECTION.
  6. COMPLETE FINAL GRADING, INSTALLATION OF GRAVEL BASE COURSES, PLACEMENT OF CURBS, PAVEMENTS, WALKS, ETC.
  7. PLACE TOPSOIL AND IMMEDIATELY STABILIZE DISTURBED AREAS WITH EROSION CONTROLS.
  8. RESTORE DETENTION POND AS NEEDED TO MATCH DESIGN GRADES.
  9. EROSION CONTROLS SHALL NOT BE REMOVED UNTIL SITE IS FULLY STABILIZED OR 100% VEGETATIVE COVER IS ESTABLISHED.
- CONTRACTOR MAY MODIFY SEQUENCING AFTER ITEM 1 AS NEEDED TO COMPLETE CONSTRUCTION IF EROSION CONTROLS ARE MAINTAINED IN ACCORDANCE WITH THE CONSTRUCTION SITE EROSION CONTROL REQUIREMENTS.

**CONSTRUCTION SITE EROSION CONTROL**

1. CONTRACTOR IS RESPONSIBLE TO NOTIFY ENGINEER OF RECORD AND OFFICIALS OF ANY CHANGES TO THE EROSION CONTROL AND STORM WATER MANAGEMENT PLANS. ENGINEER OF RECORD AND APPROPRIATE CITY OF WAUKESHA OFFICIALS MUST APPROVE ANY CHANGES PRIOR TO DEVIATION FROM THE APPROVED PLANS.
2. ALL EROSION CONTROL MEASURES SHALL BE CONSTRUCTED AND MAINTAINED BY THE CONTRACTOR IN ACCORDANCE WITH THE WISCONSIN DEPARTMENT OF NATURAL RESOURCES (WDNR) TECHNICAL STANDARDS (REFERRED TO AS BMP'S) AND CITY OF WAUKESHA ORDINANCE. IT IS THE CONTRACTOR'S RESPONSIBILITY TO OBTAIN A COPY OF THESE STANDARDS. CONTRACTOR SHALL BE RESPONSIBLE FOR ANY ADDITIONAL CONSTRUCTION EROSION CONTROL MEASURES WHICH MAY BE NECESSARY TO MEET UNFORESEEN FIELD CONDITIONS.
3. MODIFICATIONS TO THE APPROVED EROSION CONTROL DESIGN IN ORDER TO MEET UNFORESEEN FIELD CONDITIONS IS ALLOWED IF MODIFICATIONS CONFORM TO BMP'S. ALL DESIGN MODIFICATIONS MUST BE APPROVED BY THE CITY OF WAUKESHA PRIOR TO DEVIATION OF THE APPROVED PLAN.
4. ADDITIONAL EROSION CONTROL MEASURES, AS REQUESTED BY STATE INSPECTORS, LOCAL INSPECTORS, COUNTY INSPECTORS AND/OR ENGINEER OF RECORD SHALL BE INSTALLED WITHIN 24 HOURS OF REQUEST.
5. INSTALL PERIMETER EROSION CONTROL MEASURES (SUCH AS CONSTRUCTION ENTRANCES, SILT FENCE, AND EXISTING INLET PROTECTION) PRIOR TO ANY SITE WORK, INCLUDING GRADING OR DISTURBANCE OF EXISTING SURFACE COVER, AS SHOWN ON PLAN IN ORDER TO PROTECT ADJACENT PROPERTIES/STORM SEWER SYSTEMS FROM SEDIMENT TRANSPORT.
6. CONSTRUCTION ENTRANCES SHALL BE INSTALLED AT ALL LOCATIONS OF VEHICLE INGRESS/EGRESS POINTS. CONTRACTOR IS RESPONSIBLE TO COORDINATE LOCATION(S) WITH THE PROPER AUTHORITIES, PROVIDE NECESSARY FEES, AND OBTAIN ALL REQUIRED APPROVALS OR PERMITS. ADDITIONAL CONSTRUCTION ENTRANCES OTHER THAN AS SHOWN ON THE PLANS MUST BE PRIOR APPROVED BY THE CITY OF WAUKESHA.
7. INLET PROTECTION SHALL BE IMMEDIATELY FITTED AT THE INLET OF ALL INSTALLED STORM SEWER AND SILT FENCE SHALL BE IMMEDIATELY FITTED AT ALL INSTALLED CULVERT INLETS TO PREVENT SEDIMENT DEPOSITION WITHIN STORM SEWER SYSTEMS.
8. DITCH CHECKS AND APPLICABLE EROSION NETTING/MATTING SHALL BE INSTALLED IMMEDIATELY AFTER COMPLETION OF GRADING EFFORTS WITHIN DITCHES/SWALES TO PREVENT SOIL TRANSPORTATION.
9. CONTRACTOR SHALL INSTALL SILT FENCING AT DOWNSLOPE SIDE OF STOCKPILES.
10. ALL EXPOSED SOIL AREAS THAT WILL NOT BE BROUGHT TO FINAL GRADE OR ON WHICH LAND DISTURBING ACTIVITIES WILL NOT BE PERFORMED FOR A PERIOD GREATER THAN 30 DAYS AND REQUIRE VEGETATIVE COVER FOR LESS THAN 1 YEAR, REQUIRE TEMPORARY SEEDING FOR EROSION CONTROL. SEEDING FOR EROSION CONTROL SHALL BE IN ACCORDANCE WITH WDNR TECHNICAL STANDARD 1059 AND CITY OF WAUKESHA ORDINANCE.
11. IF TOPSOIL STOCKPILE REMAINS UNDISTURBED FOR MORE THAN SEVEN (7) DAYS, TEMPORARY SEEDING AND STABILIZATION IN ACCORDANCE WITH BEST MANAGEMENT PRACTICES IS REQUIRED. IF DISTURBANCE OCCURS BETWEEN NOVEMBER 15TH AND MAY 15TH, THE MULCHING SHALL BE PERFORMED BY HYDRO-MULCHING WITH A "TACKIFIER."
12. ALL DISTURBED SLOPES EXCEEDING 5:1, SHALL BE STABILIZED WITH CLASS I, TYPE A EROSION MATTING OR APPLICATION OF A WISCONSIN DEPARTMENT OF TRANSPORTATION (WdDOT) APPROVED POLYMER SOIL STABILIZATION TREATMENT OR A COMBINATION THEREOF, AS REQUIRED. EROSION MATTING AND/OR NETTING USED ONSITE SHALL BE INSTALLED IN ACCORDANCE WITH MANUFACTURER'S GUIDELINES AND WDNR TECHNICAL STANDARDS 1052 AND 1053.
13. THE CONTRACTOR IS RESPONSIBLE FOR CONTROLLING WIND EROSION (DUST) DURING CONSTRUCTION AT HIS/HER EXPENSE, WHEN NECESSARY OR REQUIRED BY LOCAL INSPECTORS AND/OR ENGINEER OF RECORD.
14. EROSION CONTROL FOR UTILITY CONSTRUCTION (STORM SEWER, SANITARY SEWER, WATER MAIN, ETC.):  
 A. PLACE EXCAVATED TRENCH MATERIAL ON THE HIGH SIDE OF THE TRENCH.  
 B. BACKFILL, COMPACT, AND STABILIZE THE TRENCH IMMEDIATELY AFTER PIPE CONSTRUCTION.  
 C. DISCHARGE TRENCH WATER INTO A SEDIMENTATION BASIN OR FILTERING TANK IN ACCORDANCE WITH BMP'S PRIOR TO RELEASE INTO THE STORM SEWER, RECEIVING STREAM, OR DRAINAGE DITCH.
15. PAVED SURFACES ADJACENT TO CONSTRUCTION SITE VEHICLE ACCESS SHALL BE SWEEPED AND/OR SCRAPPED TO REMOVE ACCUMULATED SOIL, DIRT AND/OR DUST AFTER THE END OF EACH WORK DAY AND AS REQUESTED BY THE CITY OF WAUKESHA.
16. INSPECTIONS AND MAINTENANCE OF ALL EROSION CONTROL MEASURES SHALL BE ROUTINE (ONCE PER WEEK MINIMUM) TO ENSURE PROPER FUNCTION OF EROSION CONTROLS AT ALL TIMES. EROSION CONTROL MEASURES ARE TO BE IN WORKING ORDER AT THE END OF EACH WORK DAY.
17. ALL EROSION AND SEDIMENT CONTROL ITEMS SHALL BE INSPECTED WITHIN 24 HOURS OF ALL RAIN EVENTS EXCEEDING 0.5 INCHES. IMMEDIATELY REPAIR ANY DAMAGE OBSERVED DURING THE INSPECTION.
18. EROSION CONTROL MEASURES SHALL BE REMOVED ONLY AFTER SITE CONSTRUCTION IS COMPLETE WITH ALL SOIL SURFACES HAVING AN ESTABLISHED VEGETATIVE COVER.

"BUILDING RELATIONSHIPS WITH A COMMITMENT TO CLIENT SATISFACTION THROUGH TRUST, QUALITY AND EXPERIENCE"

- CIVIL ENGINEERING
- SURVEYING & MAPPING
- CONSTRUCTION SERVICES
- WATER RESOURCES
- PLANNING & DEVELOPMENT
- TRANSPORTATION ENGINEERING
- LANDSCAPE ARCHITECTURE

MILWAUKEE REGIONAL OFFICE  
 N22 W22931 NANCY'S COURT SUITE 3  
 WAUKESHA, WISCONSIN 53186  
 262.513.0666 PHONE | 262.513.1232 FAX  
 MADISON | MILWAUKEE  
 KENOSHA | APPLETON  
 www.jsdinc.com

SERVICES PROVIDED TO:  
  
 Real Estate Development

PROJECT:  
**DENTAL ASSOCIATES**

PROJECT LOCATION:  
 WAUKESHA  
 WAUKESHA COUNTY, WI

JSD PROJECT NO.: 15-6779

SEAL/SIGNATURE:

ALTHOUGH EVERY EFFORT HAS BEEN MADE IN PREPARING THESE PLANS AND CHECKING THEM FOR ACCURACY, THE CONTRACTOR AND SUBCONTRACTORS MUST CHECK ALL DETAIL AND DIMENSIONS OF THEIR TRADE AND BE RESPONSIBLE FOR THE SAME.

DESIGN BY: TAG 5-20-15  
 DRAWN BY: TAG 5-20-15  
 CHECKED BY:

PLAN MODIFICATIONS:	DATE:
CITY SUBMITTAL	07-13-15

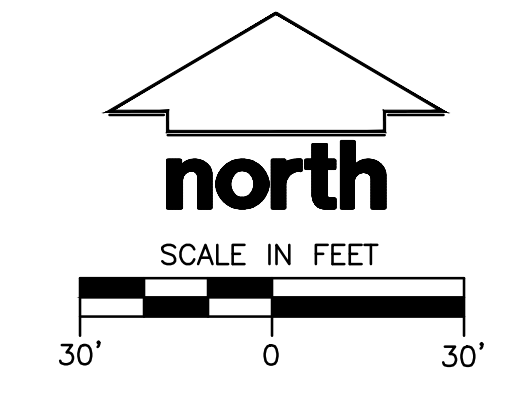
**DIGGERS HOTLINE**  
 Call 811 or (800) 242-8511  
 Milwaukee Area (262) 432-7910  
 Hearing Impaired TDD (800) 542-2289  
 www.DiggersHotline.com

SHEET TITLE:  
**SITE UTILITY PLAN**

SHEET NUMBER:  
**C300**

**LEGEND**

- ⊙ SANITARY SEWER MANHOLE
- ⊕ SANITARY CLEANOUT
- ⊕ FIRE HYDRANT
- ⊕ WATER VALVE
- ⊕ WATER MANHOLE
- ⊕ STORM SEWER MANHOLE
- ⊕ CATCH BASIN
- ST — STORM SEWER
- W — WATER MAIN
- SAN — SANITARY SEWER
- FIB — FIBER OPTIC
- G — GAS
- E — BURIED ELECTRIC
- T — BURIED TELEPHONE



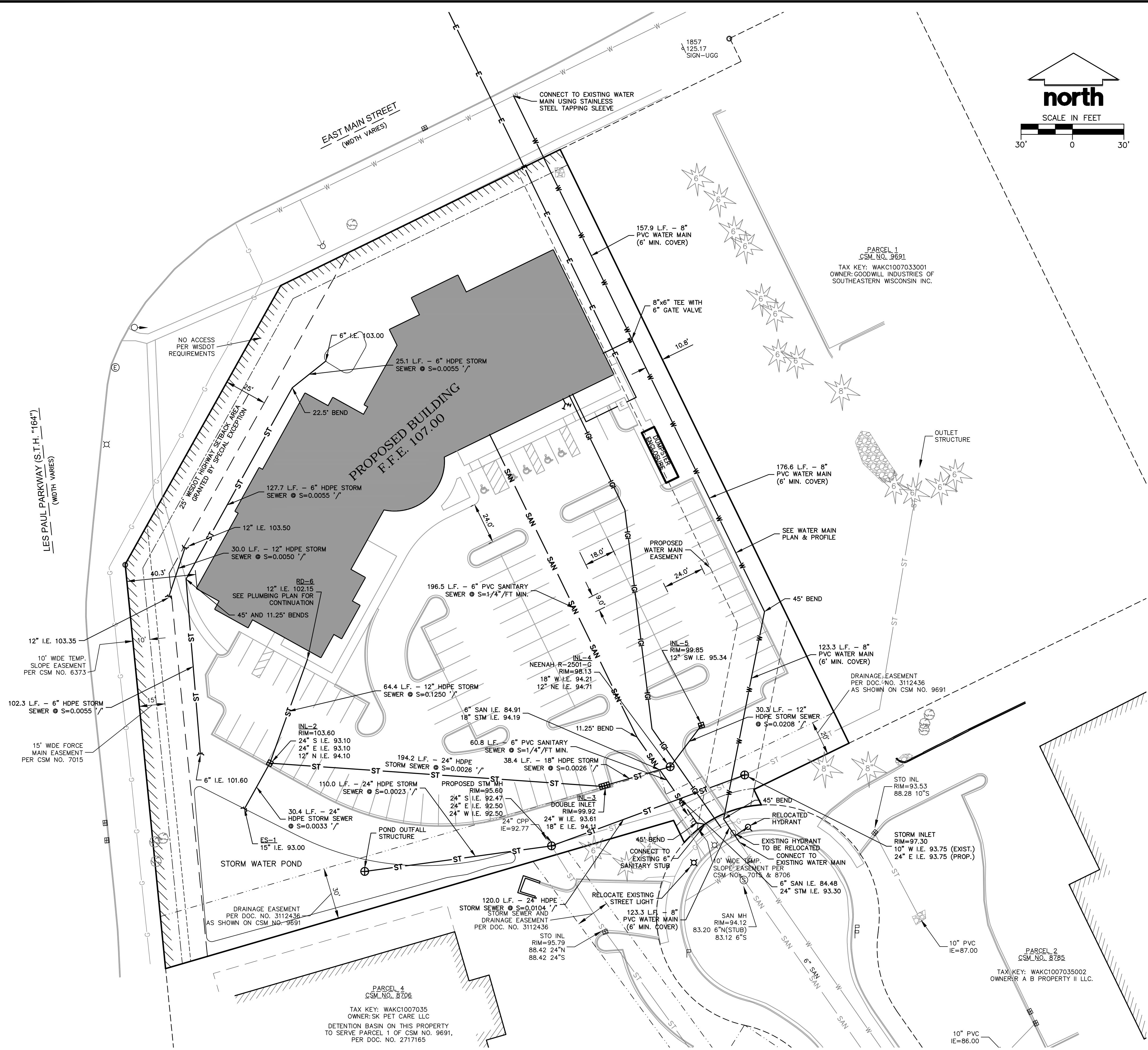
**UTILITY NOTES**

- ALL EXISTING UTILITIES ARE SHOWN FOR INFORMATIONAL PURPOSES ONLY AND ARE NOT GUARANTEED TO BE ACCURATE OR ALL INCLUSIVE. THE CONTRACTOR IS RESPONSIBLE FOR MAKING HIS OWN DETERMINATION AS TO THE TYPE AND LOCATIONS OF UNDERGROUND UTILITIES AS MAY BE NECESSARY TO AVOID DAMAGE THERETO. CONTRACTOR/OWNER SHALL CALL "DIGGER'S HOTLINE" PRIOR TO ANY CONSTRUCTION.
- ALL UTILITY WORK SHALL BE DONE IN ACCORDANCE WITH CITY OF WAUKESHA SPECIFICATIONS AND THE STANDARD SPECIFICATIONS FOR SEWER AND WATER CONSTRUCTION IN WISCONSIN. IT IS THE CONTRACTOR'S RESPONSIBILITY TO DETERMINE WHICH SPECIFICATIONS AND CODES APPLY, AND TO COORDINATE ALL CONSTRUCTION ACTIVITIES WITH THE APPROPRIATE LOCAL AND STATE AUTHORITIES.
- SPECIFICATIONS SHALL COMPLY WITH THE CITY OF WAUKESHA MUNICIPAL CODE.
- LENGTHS OF ALL UTILITIES ARE TO CENTER OF STRUCTURES OR FITTINGS AND MAY VARY SLIGHTLY FROM PLAN. LENGTHS SHALL BE VERIFIED IN THE FIELD DURING CONSTRUCTION.
- CONTRACTOR SHALL VERIFY ALL ELEVATIONS, LOCATIONS AND SIZES OF SANITARY, WATER AND STORM LATERALS AND CHECK ALL UTILITY CROSSINGS FOR CONFLICTS.
- CONTRACTOR SHALL ADJUST AND/OR RECONSTRUCT ALL UTILITY COVERS (SUCH AS MANHOLE COVERS, VALVE BOX COVERS, ETC.) TO MATCH THE FINISHED GRADES OF THE AREAS AFFECTED BY THE CONSTRUCTION.
- STORM SEWER SPECIFICATIONS -  
 PIPE - HIGH DENSITY DUAL-WALL POLYETHYLENE CORRUGATED PIPE SHALL BE AS MANUFACTURED BY ADS OR EQUAL WITH WATER TIGHT JOINTS, AND SHALL MEET THE REQUIREMENTS OF AASHTO DESIGNATION M-294 TYPE "S".  
 INLETS - INLETS SHALL BE CONSTRUCTED IN ACCORDANCE WITH FILE NO. 28 OF THE "STANDARD SPECIFICATIONS", OR APPROVED EQUAL WITH A 1'-8" X 2'-6" MAXIMUM OPENING, CURB FRAME & GRATE SHALL BE NEENAH R-3067 WITH TYPE R GRATE, OR EQUAL.  
 BACKFILL AND BEDDING - STORM SEWER SHALL BE CONSTRUCTED WITH GRAVEL BACKFILL AND CLASS "B" BEDDING IN ALL PAVED AREAS AND TO A POINT 5 FEET BEYOND THE EDGE OF PAVEMENT. TRENCHES RUNNING PARALLEL TO AND LESS THAN 5 FEET FROM THE EDGE OF PAVEMENT SHALL ALSO REQUIRE GRAVEL BACKFILL. LANDSCAPED AREAS MAY BE BACKFILLED WITH EXCAVATED MATERIAL IN CONFORMANCE WITH SECTION 8.4.3.5 OF THE "STANDARD SPECIFICATIONS".  
 FIELD TILE CONNECTION - ALL FIELD TILE ENCOUNTERED DURING CONSTRUCTION SHALL BE INCLUDED IN THE UNIT PRICE(S) FOR STORM SEWER. TILE LINES CROSSED BY THE TRENCH SHALL BE REPLACED WITH THE SAME MATERIAL AS THE STORM SEWER.

- WATER MAIN SPECIFICATIONS -  
 PIPE - WATER MAIN SHALL BE POLYVINYL CHLORIDE (PVC) PIPE MEETING THE REQUIREMENTS OF AWWA STANDARD C-900, CLASS 150, DR-18, WITH CAST IRON O.D. AND INTEGRAL ELASTOMERIC BELL AND SPIGOT JOINTS.  
 VALVES AND VALVE BOXES - GATE VALVES SHALL BE AWWA GATE VALVES MEETING THE REQUIREMENTS OF AWWA C-500 AND CHAPTER 8.27.0 OF THE "STANDARD SPECIFICATIONS". GATE VALVES AND VALVE BOXES SHALL CONFORM TO LOCAL PLUMBING ORDINANCES.  
 HYDRANTS - HYDRANTS SHALL CONFORM TO THE SPECIFICATIONS OF THE CITY OF WAUKESHA MUNICIPAL CODE. THE DISTANCE FROM THE GROUND LINE TO THE CENTERLINE OF THE LOWEST NOZZLE AND THE LOWEST CONNECTION OF THE FIRE DEPARTMENT SHALL BE NO LESS THAN 18-INCHES AND NO GREATER THAN 23-INCHES (SEE DETAIL).  
 BEDDING AND COVER MATERIAL - PIPE BEDDING AND COVER MATERIAL SHALL BE SAND, CRUSHED STONE CHIPS OR CRUSHED STONE SCREENINGS CONFORMING TO CHAPTER 8.43.2 OF THE "STANDARD SPECIFICATIONS".  
 BACKFILL - BACKFILL MATERIAL AND INSTALLATION SHALL BE IN ACCORDANCE WITH CHAPTER 2.6.0 OF THE "STANDARD SPECIFICATIONS". GRAVEL BACKFILL IS REQUIRED IN ALL PAVED AREAS AND TO A POINT 5 FEET BEYOND THE EDGE OF PAVEMENT. TRENCHES RUNNING PARALLEL TO AND LESS THAN 5 FEET FROM THE EDGE OF PAVEMENT SHALL ALSO REQUIRE GRAVEL BACKFILL. LANDSCAPED AREAS MAY BE BACKFILLED WITH EXCAVATED MATERIAL IN CONFORMANCE WITH SECTION 8.4.3.5 OF THE "STANDARD SPECIFICATIONS".

- SANITARY SEWER SPECIFICATIONS -  
 SANITARY SEWER INSTALLATION SHALL COMPLY WITH CHAPTER 19, PLUMBING OF THE CITY OF WAUKESHA MUNICIPAL CODE.  
 PIPE - SANITARY SEWER PIPE MATERIAL SHALL BE POLYVINYL CHLORIDE (PVC) MEETING REQUIREMENTS OF ASTM D 3034, SDR-35, WITH INTEGRAL BELL TYPE FLEXIBLE ELASTOMERIC JOINTS, MEETING THE REQUIREMENTS OF ASTM D-3212.  
 BEDDING AND COVER MATERIAL - BEDDING AND COVER MATERIAL SHALL CONFORM TO THE APPROPRIATE SECTIONS OF THE "STANDARD SPECIFICATION" WITH THE FOLLOWING MODIFICATION: "COVER MATERIAL SHALL BE THE SAME AS USED FOR BEDDING AND SHALL CONFORM TO SECTION 8.43.2 (A). BEDDING AND COVER MATERIAL SHALL BE PLACED IN A MINIMUM OF THREE SEPARATE LIFTS, OR AS REQUIRED TO INSURE ADEQUATE COMPACTING OF THESE MATERIALS, WITH ONE LIFT OF BEDDING MATERIAL ENDING AT OR NEAR THE SPRINGLINE OF THE PIPE. THE CONTRACTOR SHALL TAKE CARE TO COMPLETELY WORK BEDDING MATERIAL UNDER THE HAUNCH OF THE PIPE TO PROVIDE ADEQUATE SIDE SUPPORT."

- WATERMAIN AND SANITARY SEWER SHALL BE INSULATED WHEREVER THE DEPTH OF COVER IS LESS THAN 6 FEET. INSULATION AND INSTALLATION OF INSULATION SHALL BE CONFORMING WITH CHAPTER 4.17.0 "INSULATION" OF THE STANDARD SPECIFICATIONS FOR SEWER AND WATER CONSTRUCTION IN WISCONSIN 6TH EDITION UPDATED WITH ITS LATEST ADDENDUM (TYP.).



PIPE LOCATION		STRUCTURE CONTRIBUTING AREA				PIPE FLOW				PIPE DATA				PIPE CAPACITY INFORMATION					ELEVATIONS			COVER TO CROWN (FT)				
UP STRUCT	DOWN STRUCT	ROOF (SQ FT)	PAVED (SQ FT)	GRASS (SQ FT)	INDIVID AREA (ACRES)	INDIV COMP C VALUE (UNITLESS)	STORM EVENT (2.5, 10, 25, 50, 100)	INTENSITY (IN/HR)	INDIV RUNOFF (CFS)	TOTAL FLOW (CFS)	LENGTH (FT)	DIA. (IN)	SLOPE (FT/FT)	Manning's n	REQD DROP	ACTUAL DROP	PARTS FULL	VEL (FPS)	FULL FLOW (CFS)	TIME TO STRUCT. (MIN)	TIME IN SEWER (MIN)		DROP THRU (FT)	RIM/(F/L) UP	INVERT UP	INVERT DOWN
RD-6	INL-2	21,524	0	0	0.49	0.95	100	8.79	4.12	4.12	64.4	12	0.1250	0.012	0.74	8.05	0.35	15.28	13.64	5.00	5.07	1.00	107.00	102.15	94.10	3.75
INL-5	INL-4	0	1,569	0	0.04	0.95	100	8.79	0.30	0.30	30.3	12	0.0208	0.012	0.00	0.63	0.18	4.85	5.56	5.00	5.10	0.50	99.85	95.34	94.71	3.41
INL-4	INL-3	0	21,463	2,101	0.54	0.88	100	8.75	4.18	4.48	38.4	18	0.0026	0.012	0.06	0.10	0.71	3.63	5.80	5.10	5.28	0.50	98.13	94.21	94.11	2.27
INL-3	INL-2	0	21,189	2,636	0.55	0.87	100	8.69	4.12	8.60	194.2	24	0.0026	0.012	0.24	0.50	0.65	4.31	12.49	5.28	6.03	0.00	99.92	93.61	93.10	4.11
INL-2	ES-1	0	2,798	210	0.07	0.90	100	8.43	0.52	13.25	30.4	24	0.0033	0.012	0.09	0.10	0.84	5.10	14.07	6.03	6.13	--	103.60	93.10	93.00	8.30

"BUILDING RELATIONSHIPS WITH A COMMITMENT TO CLIENT SATISFACTION THROUGH TRUST, QUALITY AND EXPERIENCE."

- CIVIL ENGINEERING
- SURVEYING & MAPPING
- CONSTRUCTION SERVICES
- WATER RESOURCES
- PLANNING & DEVELOPMENT
- TRANSPORTATION ENGINEERING
- LANDSCAPE ARCHITECTURE

MILWAUKEE REGIONAL OFFICE  
 N22 W22931 NANCY'S COURT SUITE 3  
 WAUKESHA, WISCONSIN 53186  
 262.513.0666 PHONE | 262.513.1232 FAX  
 MADISON | MILWAUKEE  
 KENOSHA | APPLETON  
 www.jsdinc.com

SERVICES PROVIDED TO:  
  
**Interstate Partners LLC**  
 Real Estate Development

PROJECT:  
**DENTAL ASSOCIATES**  
 PROJECT LOCATION:  
 WAUKESHA  
 JSD PROJECT NO.: 15-6779

PROJECT LOCATION:  
 WAUKESHA  
 WAUKESHA COUNTY, WI

JSD PROJECT NO.: 15-6779

SEAL/SIGNATURE:

ALTHOUGH EVERY EFFORT HAS BEEN MADE IN PREPARING THESE PLANS AND CHECKING THEM FOR ACCURACY, THE CONTRACTOR AND SUBCONTRACTORS MUST CHECK ALL DETAIL AND DIMENSIONS OF THEIR TRADE AND BE RESPONSIBLE FOR THE SAME.

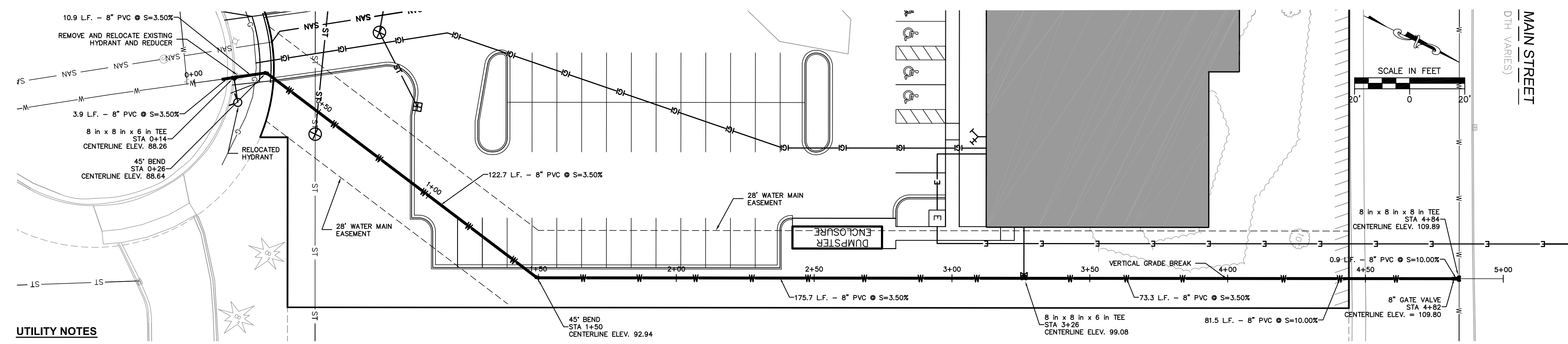
DESIGN BY: JJS 07-13-15  
 DRAWN BY: JJS 07-13-15  
 CHECKED BY: TAG 07-13-15

PLAN MODIFICATIONS:	DATE:

**DIGGERS HOTLINE**  
 Call 811 or (800) 242-8511  
 Milwaukee Area (262) 432-7910  
 Hearing Impaired TDD (800) 542-2289  
 www.DiggersHotline.com

SHEET TITLE:  
**PROPOSED WATERMAIN PLAN & PROFILE**

SHEET NUMBER:  
**C301**



**UTILITY NOTES**

- ALL EXISTING UTILITIES ARE SHOWN FOR INFORMATIONAL PURPOSES ONLY AND ARE NOT GUARANTEED TO BE ACCURATE OR ALL INCLUSIVE. THE CONTRACTOR IS RESPONSIBLE FOR MAKING HIS OWN DETERMINATION AS TO THE TYPE AND LOCATIONS OF UNDERGROUND UTILITIES AS MAY BE NECESSARY TO AVOID DAMAGE THERETO. CONTRACTOR/OWNER SHALL CALL "DIGGER'S HOTLINE" PRIOR TO ANY CONSTRUCTION.
- ALL UTILITY WORK SHALL BE DONE IN ACCORDANCE WITH CITY OF WAUKESHA SPECIFICATIONS AND THE STANDARD SPECIFICATIONS FOR SEWER AND WATER CONSTRUCTION IN WISCONSIN - SIXTH EDITION. IT IS THE CONTRACTOR'S RESPONSIBILITY TO DETERMINE WHICH SPECIFICATIONS AND CODES APPLY AND TO COORDINATE ALL CONSTRUCTION ACTIVITIES WITH THE APPROPRIATE LOCAL AND STATE AUTHORITIES.
- LENGTHS OF ALL UTILITIES ARE TO CENTER OF STRUCTURES OR FITTINGS AND MAY VARY SLIGHTLY FROM PLAN. LENGTHS SHALL BE VERIFIED IN THE FIELD DURING CONSTRUCTION.
- CONTRACTOR SHALL VERIFY ALL ELEVATIONS, LOCATIONS, AND SIZES OF WATER MAIN AND CHECK ALL UTILITY CROSSINGS FOR CONFLICTS, PRIOR TO COMMENCEMENT OF CONSTRUCTION ACTIVITIES.
- WATER MAIN SPECIFICATIONS -  
 PIPE - WATER MAIN SHALL BE POLYVINYL CHLORIDE (PVC) PIPE MEETING THE REQUIREMENTS OF AWWA STANDARD C-900, CLASS 150, DR-18, WITH CAST IRON O.D. AND INTEGRAL ELASTOMERIC BELL AND SPIGOT JOINTS.  
 VALVES AND VALVE BOXES - GATE VALVES SHALL BE AWWA GATE VALVES MEETING THE REQUIREMENTS OF AWWA C-500 AND CHAPTER 4.8.0 OF THE "STANDARD SPECIFICATIONS". GATE VALVES AND VALVE BOXES SHALL CONFORM TO LOCAL PLUMBING ORDINANCES.  
 BEDDING AND COVER MATERIAL - PIPE BEDDING AND COVER MATERIAL SHALL BE CRUSHED STONE CHIPS CONFORMING TO CHAPTER 8.43.0 OF THE "STANDARD SPECIFICATIONS".  
 BACKFILL - BACKFILL MATERIAL AND INSTALLATION SHALL BE IN ACCORDANCE WITH CHAPTER 2.6.0 OF THE "STANDARD SPECIFICATIONS". GRAVEL BACKFILL IS REQUIRED IN ALL PAVED AREAS AND TO A POINT 5 FEET BEYOND THE EDGE OF PAVEMENT. TRENCHES RUNNING PARALLEL TO AND LESS THAN 5 FEET FROM THE EDGE OF PAVEMENT SHALL ALSO REQUIRE GRAVEL BACKFILL. LANDSCAPED AREAS MAY BE BACKFILLED WITH EXCAVATED MATERIAL IN CONFORMANCE WITH SECTION 8.43.5 OF THE "STANDARD SPECIFICATIONS".  
 TRACER WIRE SHALL BE INSTALLED IN CONFORMANCE WITH SECTION 2.11.2 OF THE "STANDARD SPECIFICATIONS".

**ESTIMATE OF QUANTITIES**

8" PVC WATER MAIN	472 LF
8" GATE VALVE AND BOX	1 EA
8" 45' BEND	2 EA
8" TAPPING SLEEVE	1 EA
8"x6" ANCHOR TEE	2 EA
HYDRANT ASSY (HYD. LEAD, VALVE, FITTINGS)	1 EA


**LEGEND**

- |     |                        |         |                  |
|-----|------------------------|---------|------------------|
| ⊙   | SANITARY SEWER MANHOLE | — ST —  | STORM SEWER      |
| ⊕   | FIRE HYDRANT           | — W —   | WATER MAIN       |
| ⊗   | WATER VALVE            | — SAN — | SANITARY SEWER   |
| ⊙   | STORM SEWER MANHOLE    | — FIB — | FIBER OPTIC      |
| ⊕   | OUTFALL                | — GAS — | GAS              |
| ⊕/⊗ | CATCH BASIN            | — E —   | BURIED ELECTRIC  |
|     |                        | — T —   | BURIED TELEPHONE |

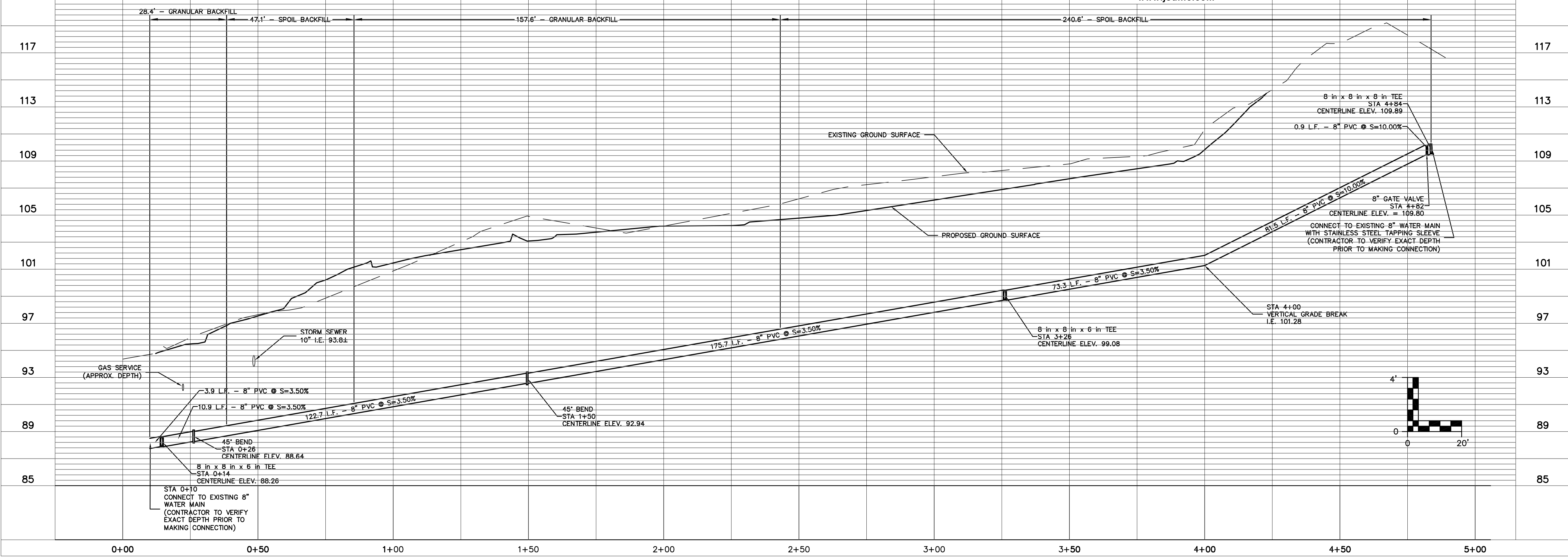
**DIGGERS HOTLINE**  
 Call 811 or (800) 242-8511  
 Milwaukee Area (262) 432-7910  
 Hearing Impaired TDD (800) 542-2289  
 www.DiggersHotline.com

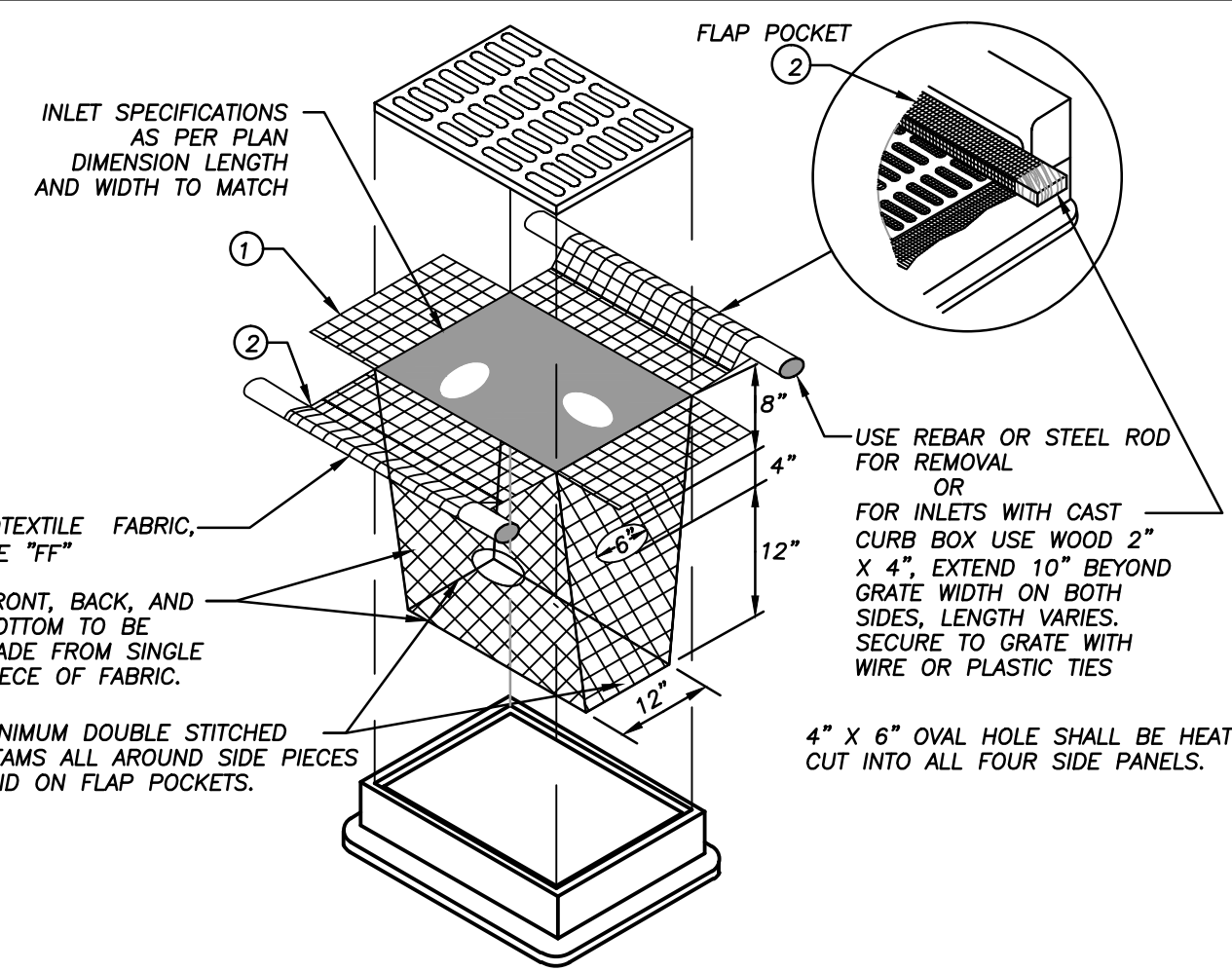
ALTHOUGH EVERY EFFORT HAS BEEN MADE IN PREPARING THESE PLANS AND CHECKING THEM FOR ACCURACY, THE CONTRACTOR AND SUBCONTRACTORS MUST CHECK ALL DETAIL AND DIMENSIONS OF THEIR TRADE AND BE RESPONSIBLE FOR THE SAME.

**JSD Professional Services, Inc.**  
 • Engineers • Surveyors • Planners  
 "BUILDING RELATIONSHIPS WITH A COMMITMENT TO CLIENT SATISFACTION THROUGH TRUST, QUALITY AND EXPERIENCE"  
 • CIVIL ENGINEERING  
 • SURVEYING & MAPPING  
 • CONSTRUCTION SERVICES  
 • WATER RESOURCES  
 • PLANNING & DEVELOPMENT  
 • TRANSPORTATION ENGINEERING  
 • LANDSCAPE ARCHITECTURE  
 MILWAUKEE REGIONAL OFFICE  
 N22 W22931 NANCY'S COURT SUITE 3  
 WAUKESHA, WISCONSIN 53186  
 262.513.0666 PHONE | 262.513.1232 FAX  
 MADISON | MILWAUKEE  
 KENOSHA | APPLETON  
 www.jsdinc.com

SERVICES PROVIDED TO:  
  
**Interstate Partners LLC**  
 Real Estate Development

SHEET TITLE:  
**WATERMAIN PLAN & PROFILE**  
 LOCATION: PUBLIC WATERMAIN EASEMENT  
 FROM: STA 0+10  
 TO: STA 4+84  
 DESIGN BY: JJS 07-13-15  
 DRAWN BY: JJS 07-13-15  
 CHECKED BY: TAG 07-13-15  
 SHEET NUMBER:  
**C301**





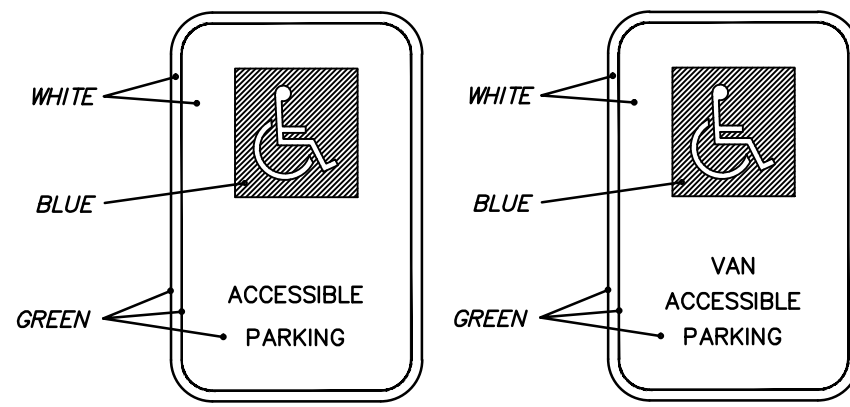
**GENERAL NOTES**

- INLET PROTECTION DEVICES SHALL BE MAINTAINED OR REPLACED AT THE DIRECTION OF THE ENGINEER.
  - MANUFACTURED ALTERNATIVES APPROVED AND LISTED ON THE WisDOT EROSION CONTROL PRODUCT ACCEPTABILITY LIST MAY BE SUBSTITUTED.
  - WHEN REMOVING OR MAINTAINING INLET PROTECTION, CARE SHALL BE TAKEN SO THAT THE SEDIMENT TRAPPED ON THE GEOTEXTILE FABRIC DOES NOT FALL INTO THE INLET. ANY MATERIAL FALLING INTO THE INLET SHALL BE REMOVED IMMEDIATELY.
- ① FINISHED SIZE, INCLUDING FLAP POCKETS WHERE REQUIRED, SHALL EXTEND A MINIMUM OF 10 INCHES AROUND THE PERIMETER TO FACILITATE MAINTENANCE OR REMOVAL.
- ② FLAP POCKETS SHALL BE LARGE ENOUGH TO ACCEPT WOOD 2 INCH X 4 INCH.

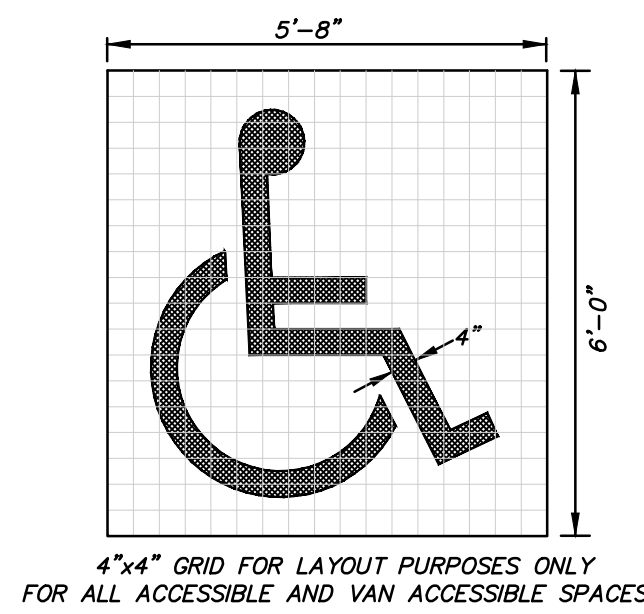
**INSTALLATION NOTES**

- DO NOT INSTALL INLET PROTECTION TYPE "D" IN INLETS SHALLOWER THAN 30 INCHES, MEASURED FROM THE BOTTOM OF THE INLET TO THE TOP OF THE GRATE.
- TRIM EXCESS FABRIC IN THE FLOW LINE TO WITHIN 3 INCHES OF THE GRATE.
- THE INSTALLED BAG SHALL HAVE A MINIMUM SIDE CLEARANCE, BETWEEN THE INLET WALLS AND THE BAG, MEASURED AT THE BOTTOM OF THE OVERFLOW HOLES, OF 3 INCHES. WHERE NECESSARY THE CONTRACTOR SHALL CINCH THE BAG, USING PLASTIC ZIP TIES, TO ACHIEVE THE 3 INCHES CLEARANCE. THE TIES SHALL BE PLACED AT A MAXIMUM OF 4 INCHES FROM THE BOTTOM OF THE BAG.

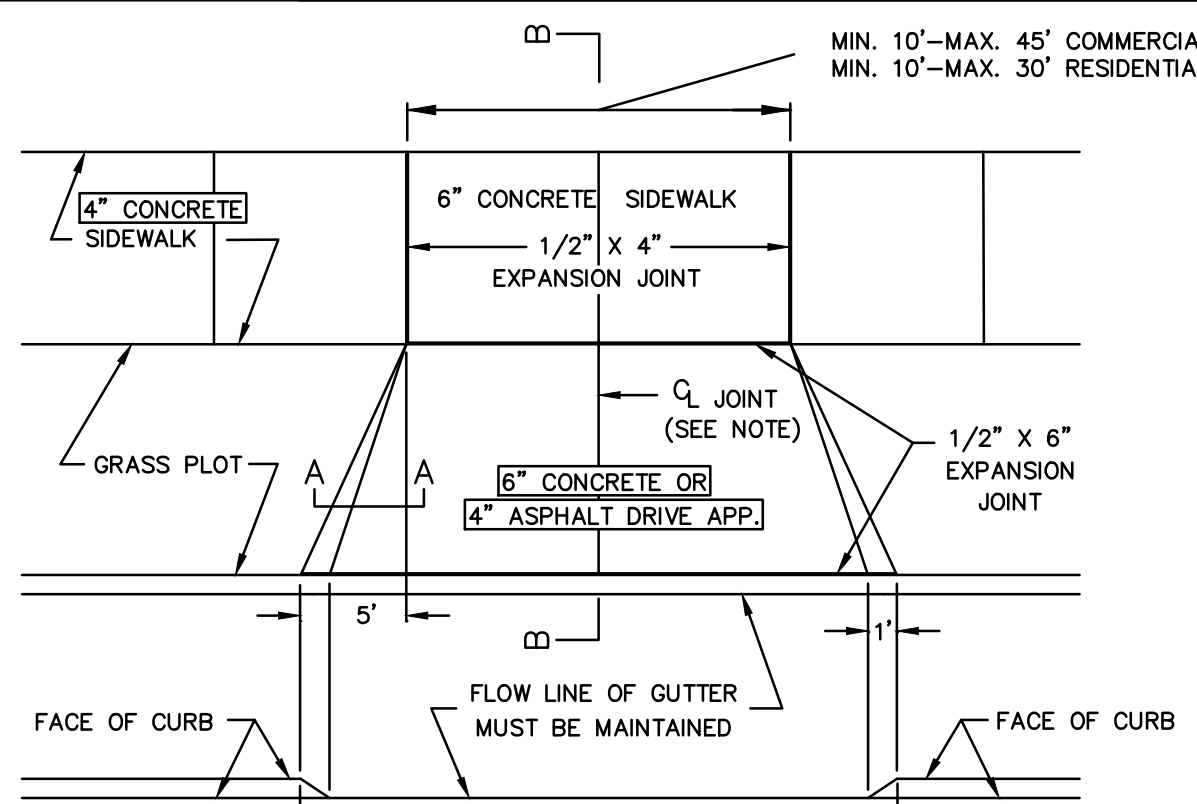
**INLET PROTECTION, TYPE "D"**  
N.T.S.



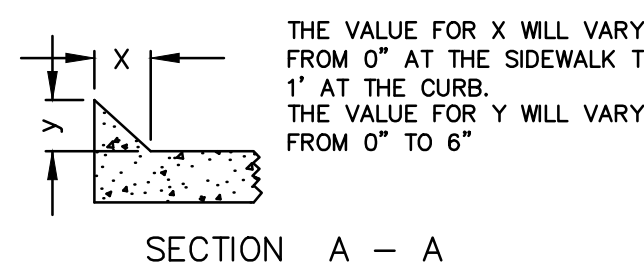
**HANDICAP SIGN DETAILS**  
N.T.S.



**PAINTED HANDICAP SYMBOL**  
N.T.S.



**CONCRETE DRIVEWAY APPROACH**  
N.T.S.

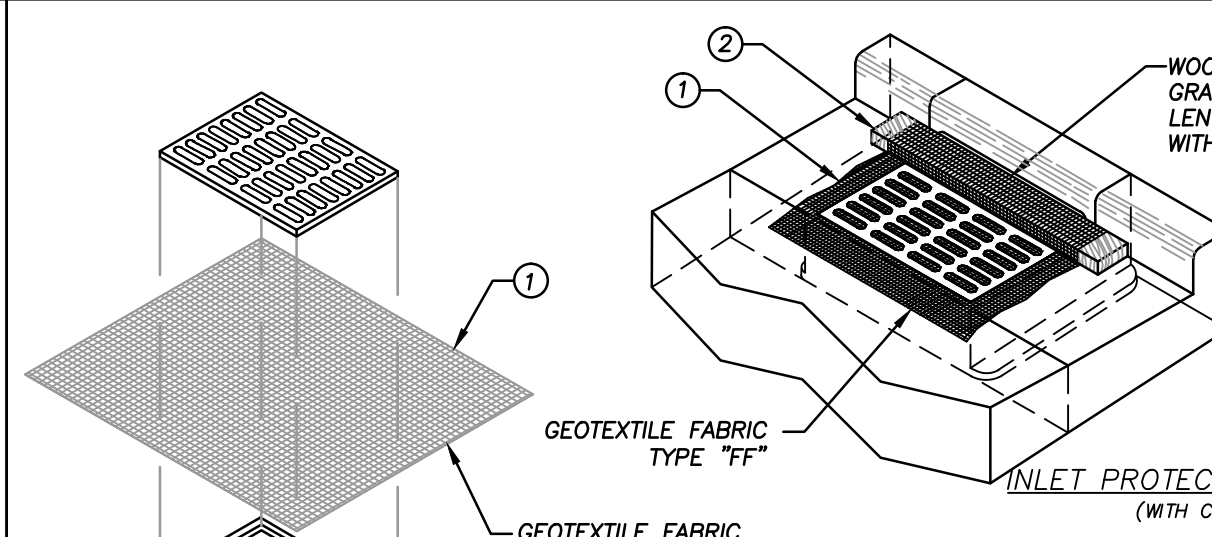


NOTE: DRIVEWAYS 10' TO 20' WIDE SHALL HAVE ONE  $\frac{1}{2}$ " JOINT. DRIVEWAYS 21' TO 30' WIDE SHALL HAVE TWO  $\frac{1}{2}$ " JOINTS EQUALLY SPACED.

1 1/2" X 6" EXPANSION JOINT AT THE FACE OF WALK AND BACK OF CURB IS REQUIRED ONLY FOR CONCRETE DRIVE APPROACH.

FLARE WIDTH, 3' MIN. TO 5' MAX. (CAN BE WIDER WITH APPROVAL OF THE CITY ENGINEER)

8" CONCRETE ALLOWED FOR APPROACH AND SIDEWALK FOR HEAVY TRAFFIC.



**INLET PROTECTION - TYPE "B"**  
(WITHOUT CURB BOX)

**TYPE "B" INSTALLATION NOTES**

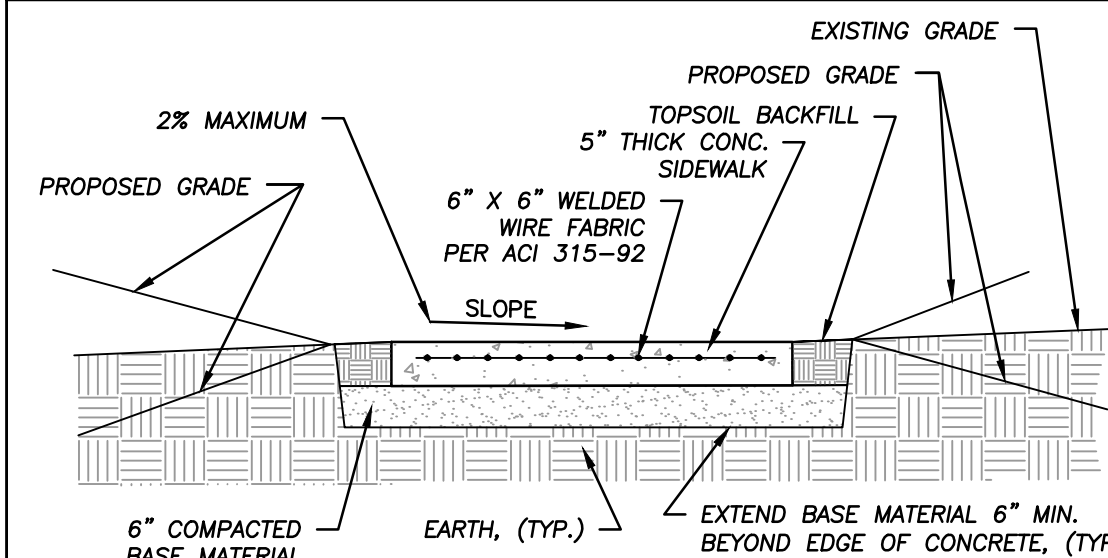
TRIM EXCESS FABRIC IN THE FLOW LINE TO WITHIN 3 INCHES OF THE GRATE.

THE CONTRACTOR SHALL DEMONSTRATE A METHOD OF MAINTENANCE, USING A SEWN FLAP, HAND HOLDS OR OTHER METHODS TO PREVENT ACCUMULATED SEDIMENT FROM ENTERING THE INLET.

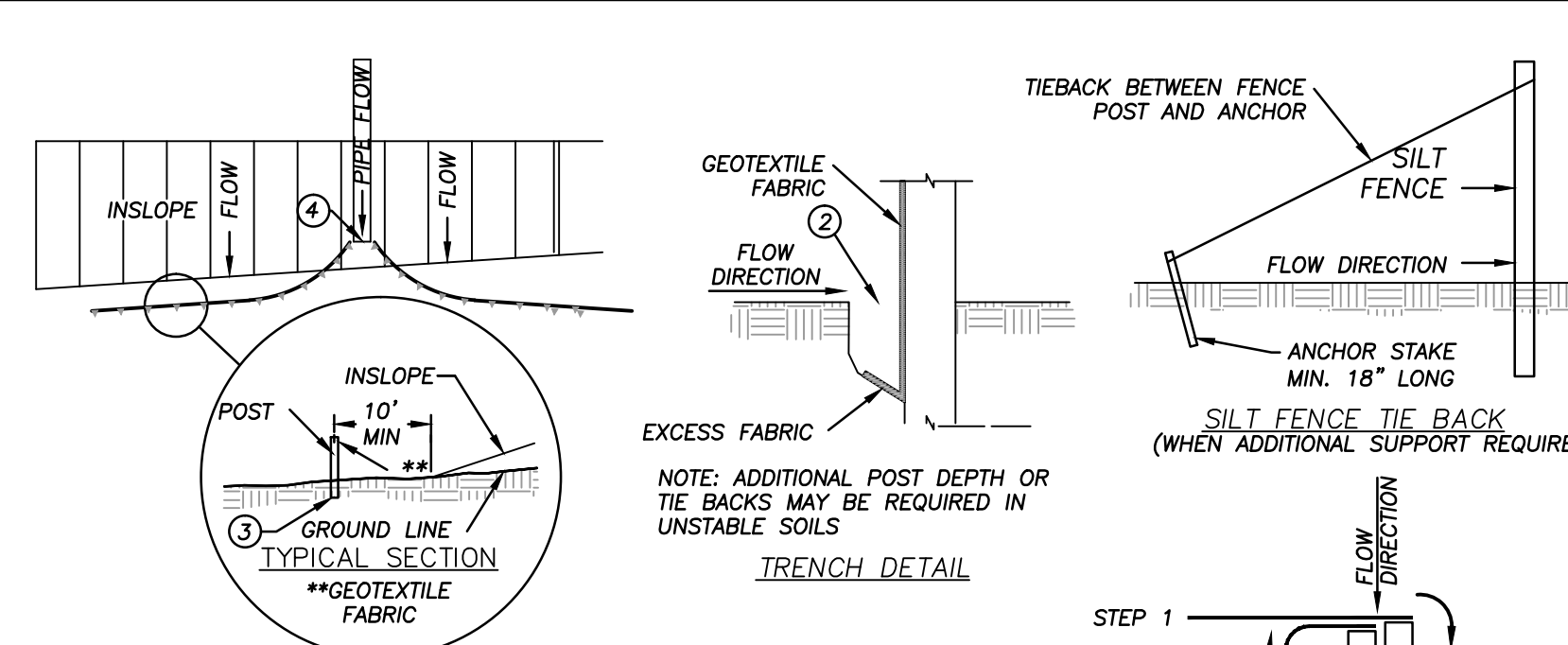
**GENERAL NOTES:**

- TYPE "FF" GEOTEXTILE FABRIC INLET PROTECTION SHALL BE SELECTED FROM THE WISCONSIN DEPARTMENT OF TRANSPORTATION'S PRODUCT ACCEPTABILITY (PAL) LIST. FABRIC INLET PROTECTION AND MANUFACTURED ALTERNATIVES SHALL BE IN COMPLIANCE WITH WISCONSIN DEPARTMENT OF NATURAL RESOURCES TECHNICAL STANDARD 1060.
  - WHEN REMOVING OR MAINTAINING INLET PROTECTION, CARE SHALL BE TAKEN SO THAT THE SEDIMENT TRAPPED ON THE GEOTEXTILE FABRIC DOES NOT FALL INTO THE INLET. ANY MATERIAL FALLING INTO THE INLET SHALL BE REMOVED IMMEDIATELY.
- ① FINISHED SIZE, INCLUDING FLAP POCKET WHERE REQUIRED, SHALL EXTEND A MINIMUM OF 10 INCHES AROUND THE PERIMETER TO FACILITATE MAINTENANCE OR REMOVAL.
- ② FOR INLET PROTECTION, TYPE "C" (WITH CURB BOX), AN ADDITIONAL 18 INCHES OF FABRIC IS WRAPPED AROUND THE WOOD AND SECURED WITH STAPLES. THE WOOD SHALL NOT BLOCK THE ENTIRE HEIGHT OF THE CURB BOX OPENING.

**INLET PROTECTION**  
N.T.S.



**CONCRETE SIDEWALK**  
N.T.S.

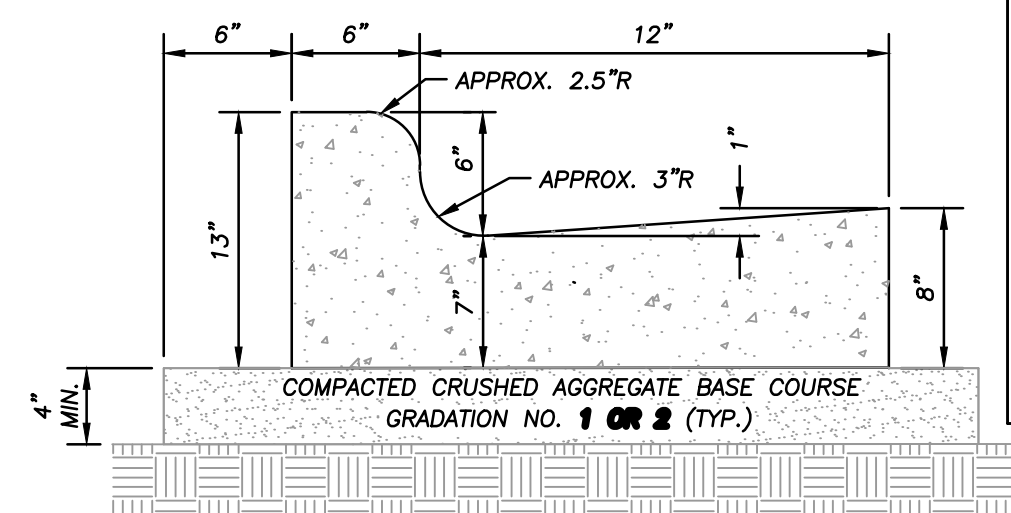


**SILT FENCE ALONG SLOPES & OUTFALLS**

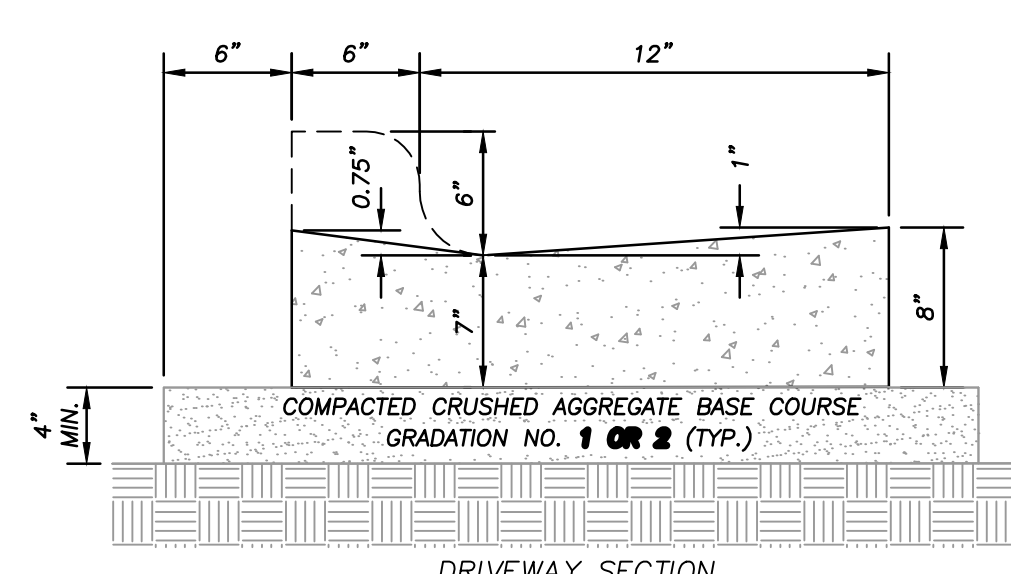
**GENERAL NOTES**

- SILT FENCE SHALL BE ANCHORED BY SPREADING AT LEAST 8-INCHES OF FABRIC IN A 4-INCH WIDE AND 6-INCH DEEP TRENCH OR 6-INCH DEEP V-TRENCH ON THE UPSLOPE SIDE OF THE FENCE. TRENCHES SHALL NOT BE EXCAVATED WIDER OR DEEPER THAN NECESSARY FOR PROPER INSTALLATION.
- FOLD MATERIAL TO FIT TRENCH AND BACKFILL AND COMPACT TRENCH WITH EXCAVATED SOIL.
- WOOD POSTS SHALL BE A MINIMUM SIZE OF 1.125-INCHES X 1.125-INCHES OF DRIED OAK OR HICKORY.
- SILT FENCE TO EXTEND ABOVE THE TOP OF PIPE.
- SILT FENCE CONSTRUCTION AND GEOTEXTILE FABRIC SHALL CONFORM TO WDNR TECHNICAL STANDARD 1056.
- POST SPACING SHALL BE SELECTED BASED ON GEOTEXTILE FABRIC (8- FEET FOR WOVEN & 3- FEET FOR NON-WOVEN)

**SILT FENCE DETAIL**  
N.T.S.



**CONCRETE CURB & GUTTER**  
N.T.S.

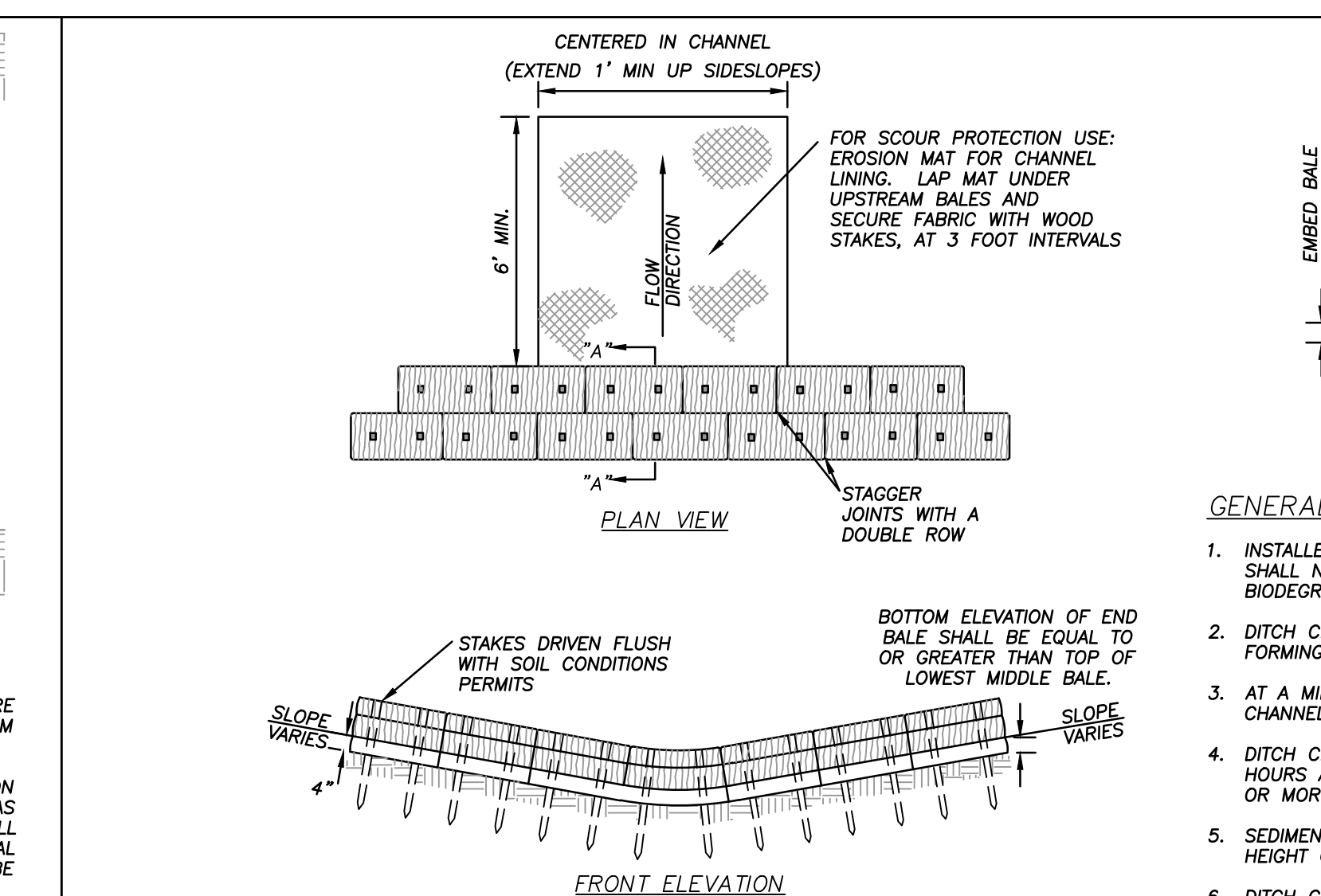


**DRIVEWAY SECTION CONCRETE CURB & GUTTER**

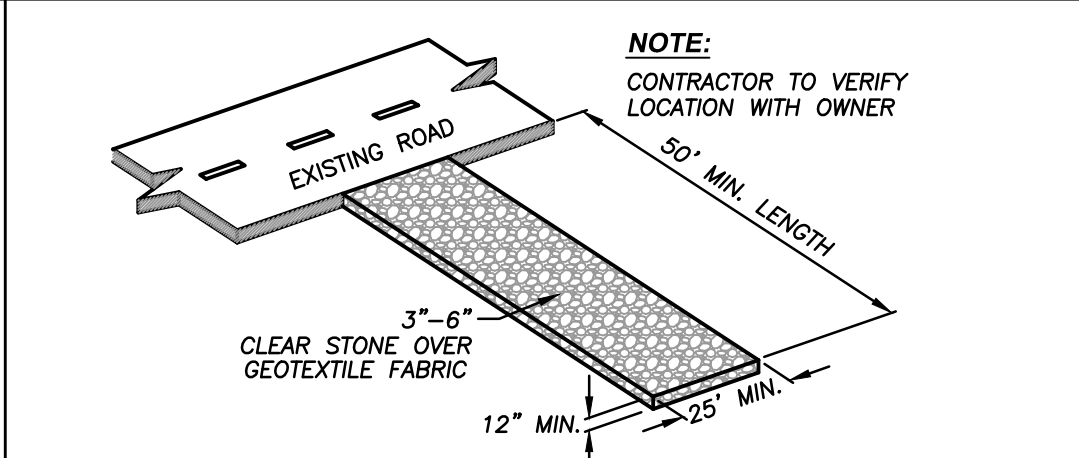
**GENERAL NOTES**

- LATERAL CONTRACTION JOINTS SHALL BE PLACED AT INTERVALS OF NOT MORE THAN 15 FEET NOR LESS THAN 6 FEET. THE JOINTS SHALL BE A MINIMUM OF 3 INCHES IN DEPTH.
- EXPANSION JOINTS SHALL BE PLACED TRANSVERSELY AT RADIUS POINTS ON CURVES OF RADIUS 200 FEET OR LESS, AND AT ANGLE POINTS, OR AS DIRECTED BY THE ENGINEER OF RECORD. THE EXPANSION JOINT FILLER SHALL BE A ONE PIECE FIBER BOARD OR THE APPROVED EQUIVALENT MATERIAL HAVING THE SAME DIMENSIONS AS CURB & GUTTER AT THAT STATION AND BE 0.5 INCH THICK.
- IN ALL CASES, CONCRETE CURB & GUTTER SHALL BE PLACED ON THOROUGHLY COMPACTED CRUSHED STONE

**18" STANDARD CURB & GUTTER**  
N.T.S.



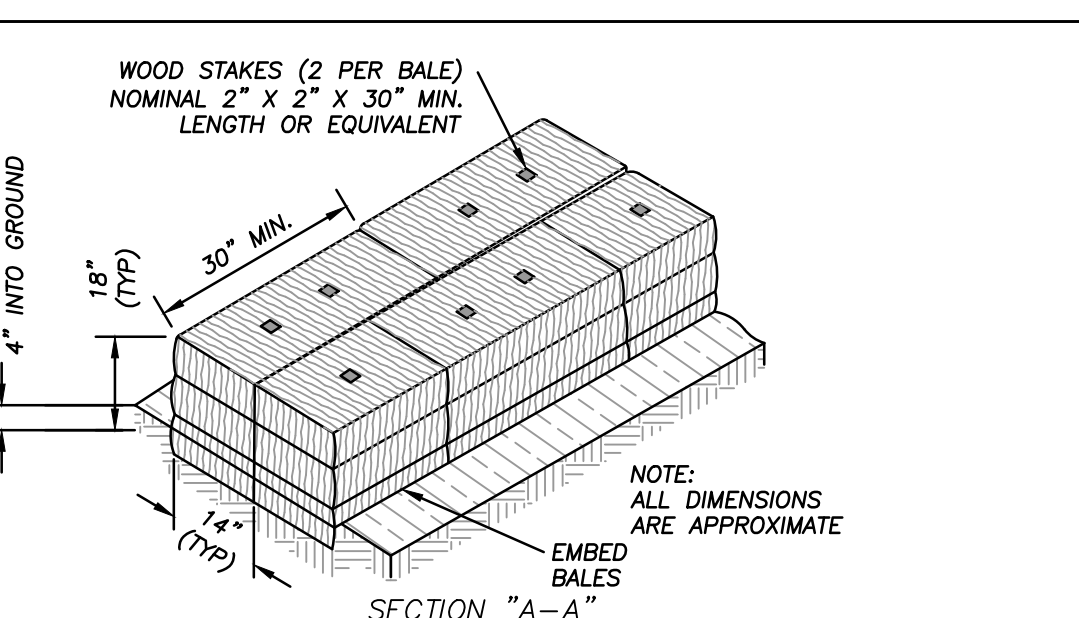
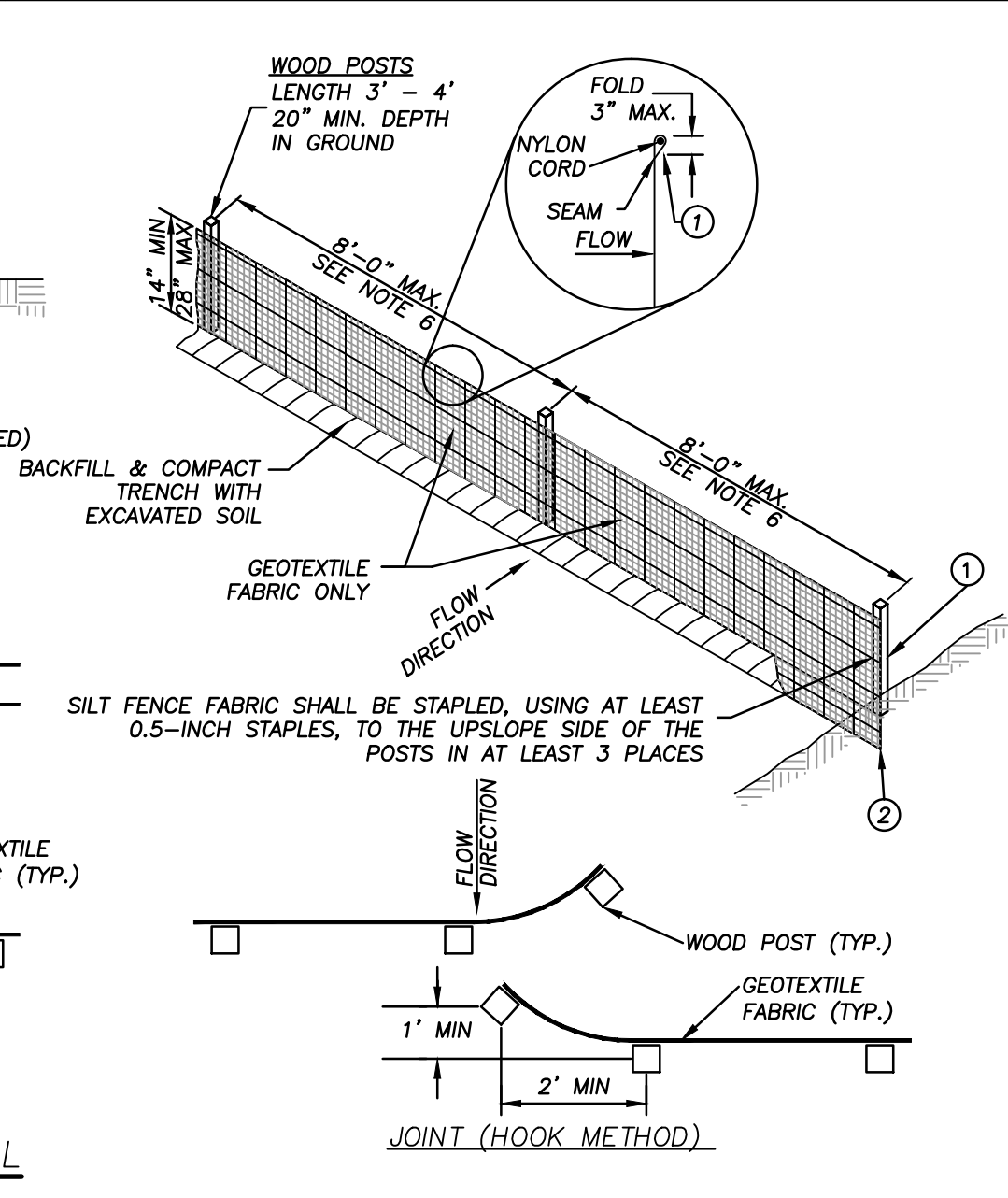
**DITCH CHECK (STRAW BALES)**  
N.T.S.



**GENERAL NOTES:**

- TRACKING PADS SHALL BE INSTALLED PRIOR TO ANY TRAFFIC LEAVING THE SITE.
- THE AGGREGATE FOR TRACKING PADS SHALL BE 3 TO 6-INCH CLEAR OR WASHED STONE. ALL MATERIAL TO BE RETAINED ON A 3-INCH SIEVE.
- THE AGGREGATE SHALL BE PLACED IN A LAYER AT LEAST 12-INCHES THICK. ON SITES WHERE SATURATED CONDITIONS ARE EXPECTED DURING THE LIFE OF THE PAD, THE PAD SHALL BE UNDERLAIN WITH W8DOT TYPE "R" GEOTEXTILE FABRIC TO PREVENT MIGRATION OF UNDERLYING SOILS INTO THE STONE LAYER.
- THE TRACKING PAD SHALL BE THE FULL WIDTH OF THE EGRESS POINT. BE REMOVED BY STREET CLEANING, NOT FLUSHING, AT THE END OF EACH WORKING DAY.
- ANY SEDIMENT TRACKED ONTO A PUBLIC OR PRIVATE ROAD SHOULD BE REMOVED BY STREET CLEANING, NOT FLUSHING, AT THE END OF EACH WORKING DAY.
- TRACKING PADS SHALL, AT A MINIMUM, BE INSPECTED WEEKLY AND WITHIN 24-HOURS AFTER EVERY PRECIPITATION EVENT THAT PRODUCES 0.5-INCHES OF RAIN OR MORE DURING A 24-HOUR PERIOD.
- THE TRACKING PAD PERFORMANCE SHALL BE MAINTAINED BY SCRAPING OR TOP-DRESSING WITH ADDITIONAL AGGREGATE.

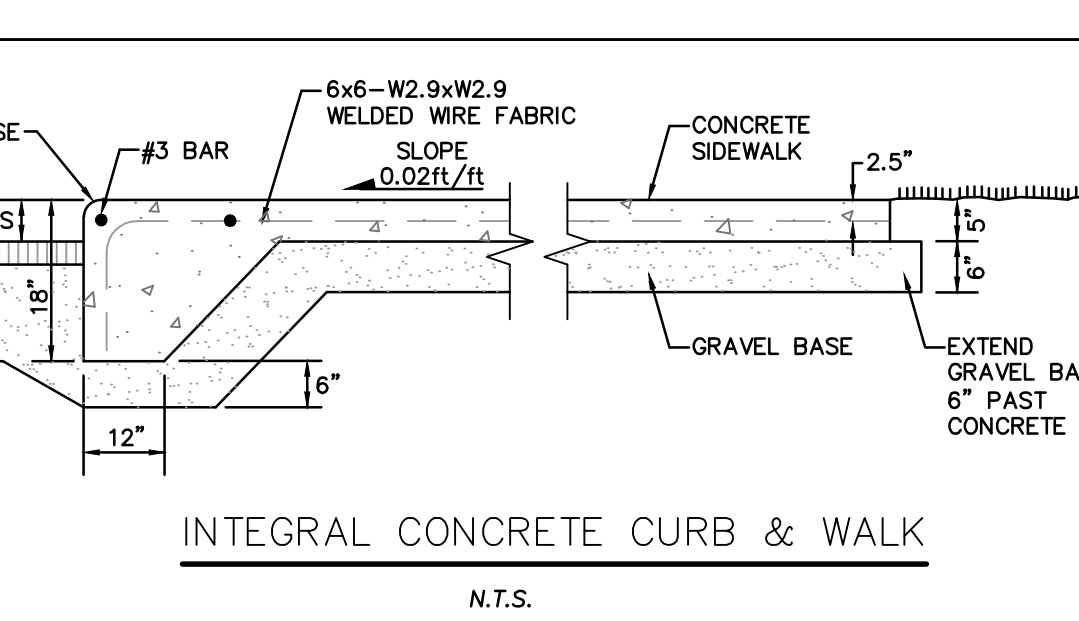
**CONSTRUCTION ENTRANCE**  
N.T.S.



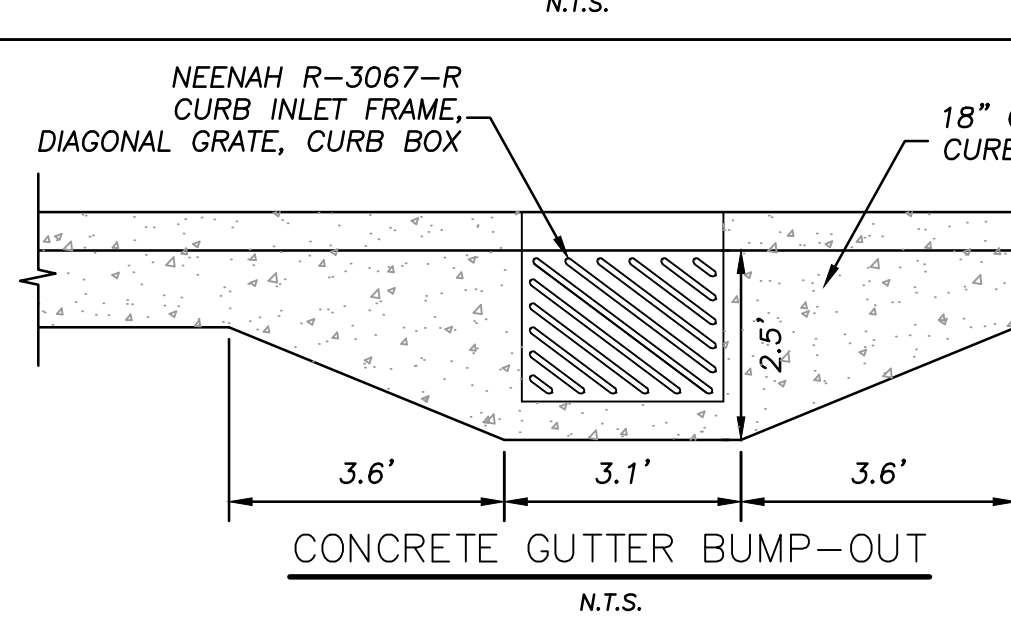
**SECTION "A-A"**

**GENERAL NOTES:**

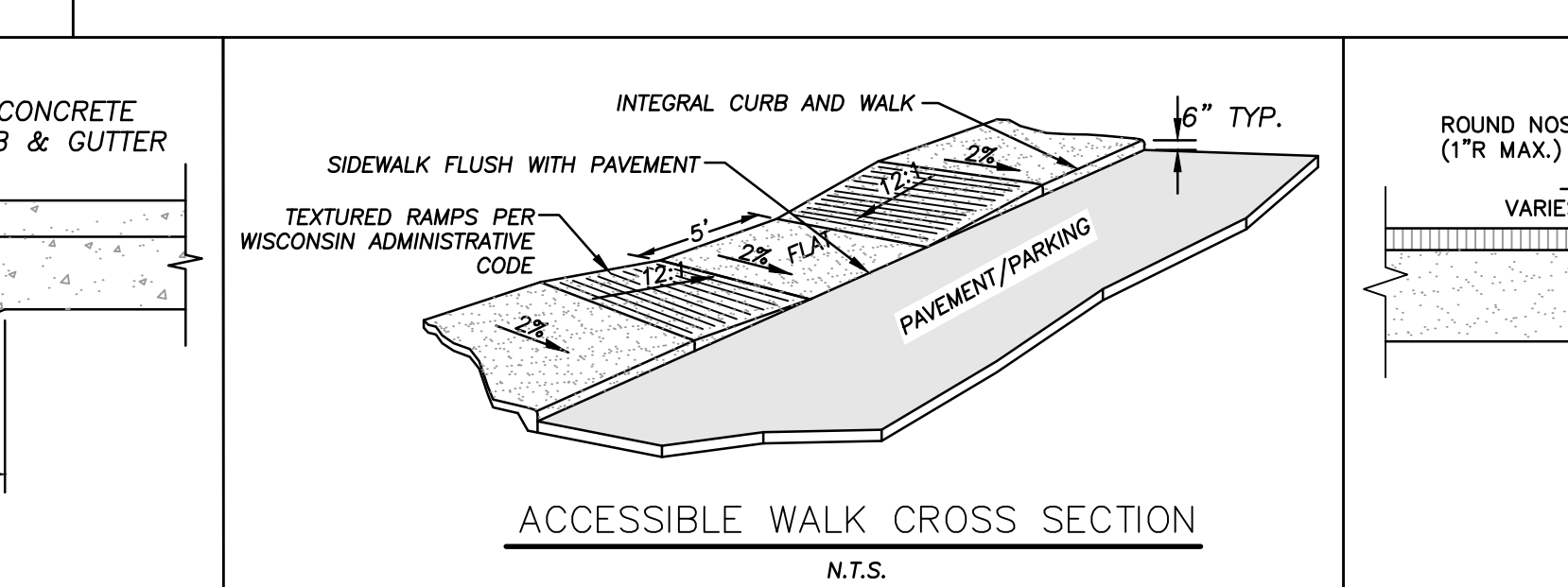
- INSTALLED, THE MINIMUM HEIGHT OF DITCH CHECKS SHALL BE 10-INCHES AND SHALL NOT EXCEED A MAXIMUM HEIGHT OF 16-INCHES FOR MANUFACTURED OR BIODEGRADABLE MATERIALS.
- DITCH CHECKS MUST BE INSTALLED WITH THE CENTER LOWER THAN THE SIDES FORMING A WEIR.
- AT A MINIMUM, INSTALL ONE DITCH CHECK FOR EVERY TWO- FEET OF DROP IN THE CHANNEL.
- DITCH CHECK SHALL, AT A MINIMUM, BE INSPECTED WEEKLY AND WITHIN 24- HOURS AFTER EVERY PRECIPITATION EVENT THAT PRODUCES 0.5-INCHES OF RAIN OR MORE DURING A 24-HOUR PERIOD.
- SEDIMENT DEPOSITS SHALL BE REMOVED WHEN DEPOSITS REACH HALF OF THE HEIGHT OF THE LOWEST BALE.
- DITCH CHECKS SHALL BE UTILIZED DURING ROUGH GRADING AND SHALL BE REMOVED ONCE FINAL GRADING AND CHANNEL STABILIZATION IS APPLIED.
- DITCH CHECK CONSTRUCTION AND MAINTENANCE SHALL BE IN ACCORDANCE WITH WDNR TECHNICAL STANDARD (1062). EROSION MATTING SCOUR PROTECTION SHALL BE CONSTRUCTED AND MAINTAINED IN ACCORDANCE WITH WDNR TECHNICAL STANDARD (1053).



**INTEGRAL CONCRETE CURB & WALK**  
N.T.S.



**CONCRETE GUTTER BUMP-OUT**  
N.T.S.



**ACCESSIBLE WALK CROSS SECTION**  
N.T.S.

**JSD Professional Services, Inc.**  
Engineers • Surveyors • Planners

"BUILDING RELATIONSHIPS WITH A COMMITMENT TO CLIENT SATISFACTION THROUGH TRUST, QUALITY AND EXPERIENCE"

- CIVIL ENGINEERING
- SURVEYING & MAPPING
- CONSTRUCTION SERVICES
- WATER RESOURCES
- PLANNING & DEVELOPMENT
- TRANSPORTATION ENGINEERING
- LANDSCAPE ARCHITECTURE

MILWAUKEE REGIONAL OFFICE  
N22 W22931 NANCY'S COURT SUITE 3  
WAUKESHA, WISCONSIN 53186  
262.513.0666 PHONE | 262.513.1232 FAX

MADISON | MILWAUKEE  
KENOSHA | APPLETON

www.jsdinc.com

SERVICES PROVIDED TO:

**Interstate Partners LLC**  
Real Estate Development

PROJECT:

**DENTAL ASSOCIATES**

PROJECT LOCATION:  
WAUKESHA  
WAUKESHA COUNTY, WI

JSD PROJECT NO.: 15-6779

SEAL/SIGNATURE:

ALTHOUGH EVERY EFFORT HAS BEEN MADE IN PREPARING THESE PLANS AND CHECKING THEM FOR ACCURACY, THE CONTRACTOR AND SUBCONTRACTORS MUST CHECK ALL DETAIL AND DIMENSIONS OF THEIR TRADE AND BE RESPONSIBLE FOR THE SAME.

DESIGN BY: JJS 06-30-15  
DRAWN BY: JJS 06-30-15  
CHECKED BY: TAG 06-30-15

PLAN MODIFICATIONS: DATE:  
CITY SUBMITTAL 07-13-15

**DIGGERS HOTLINE**

Call 811 or (800) 242-8511  
Milwaukee Area (262) 432-7910  
Hearing Impaired TDD (800) 542-2289  
www.DiggersHotline.com

SHEET TITLE:  
**NOTES & DETAILS**

SHEET NUMBER:  
**C400**

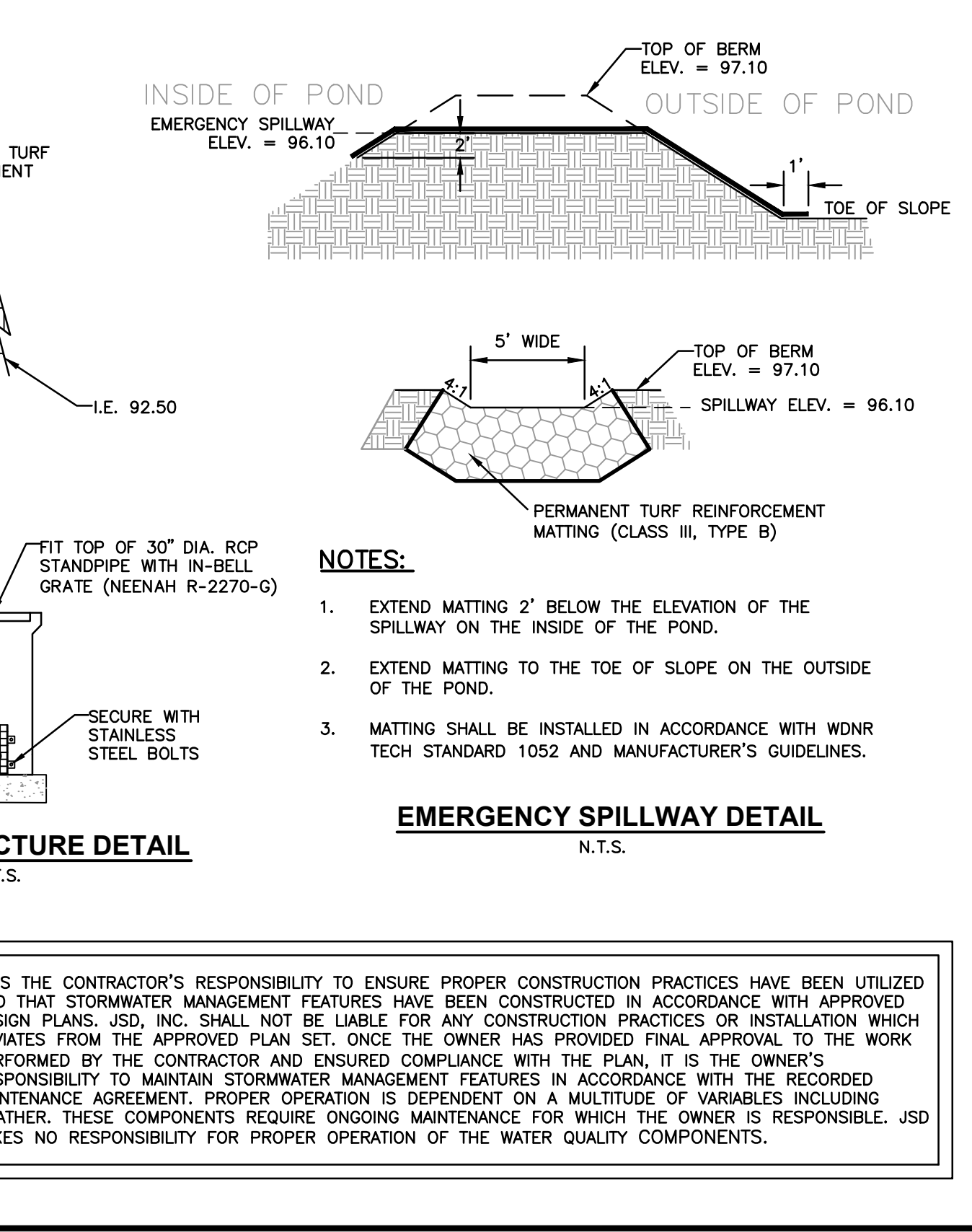
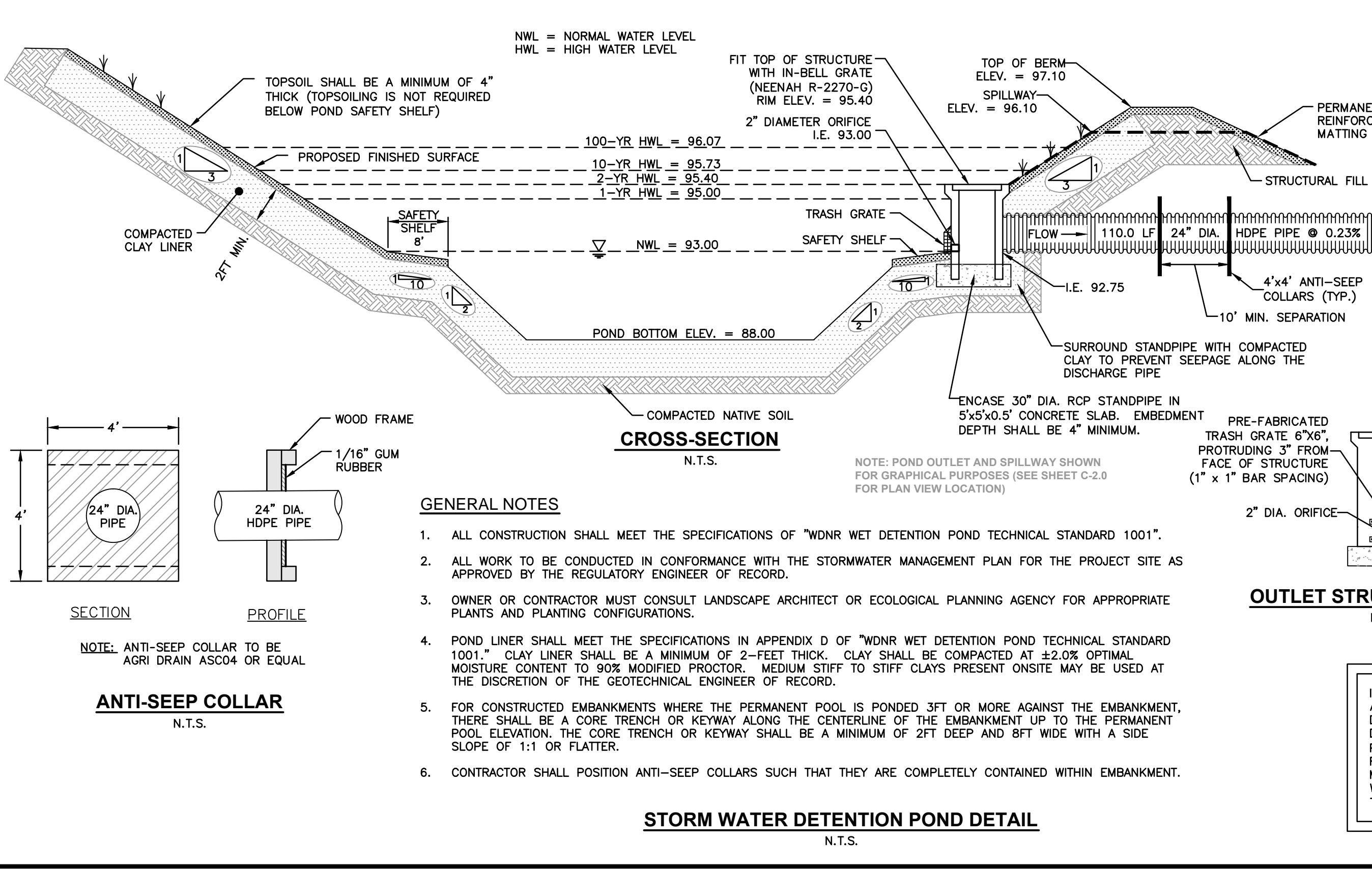
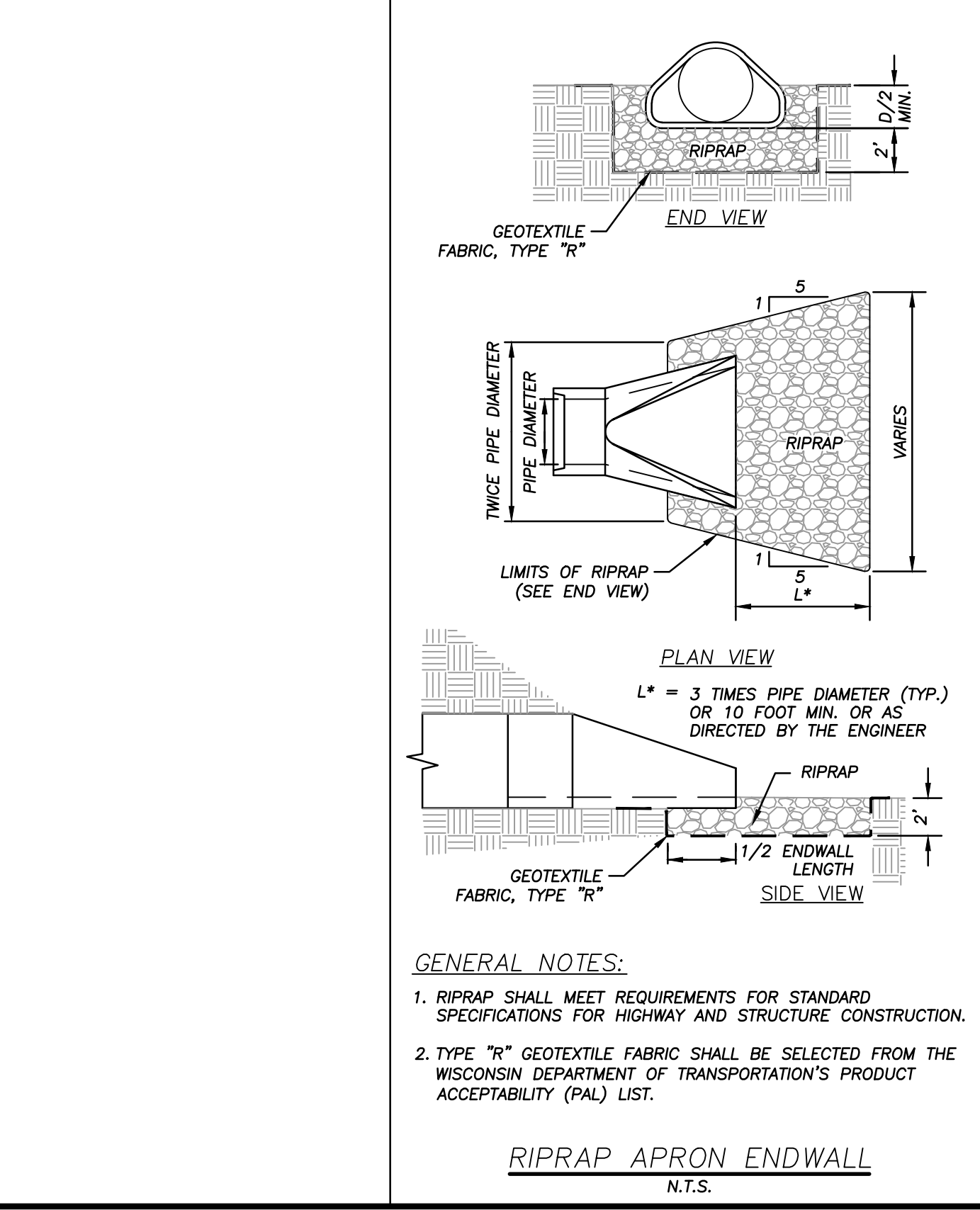
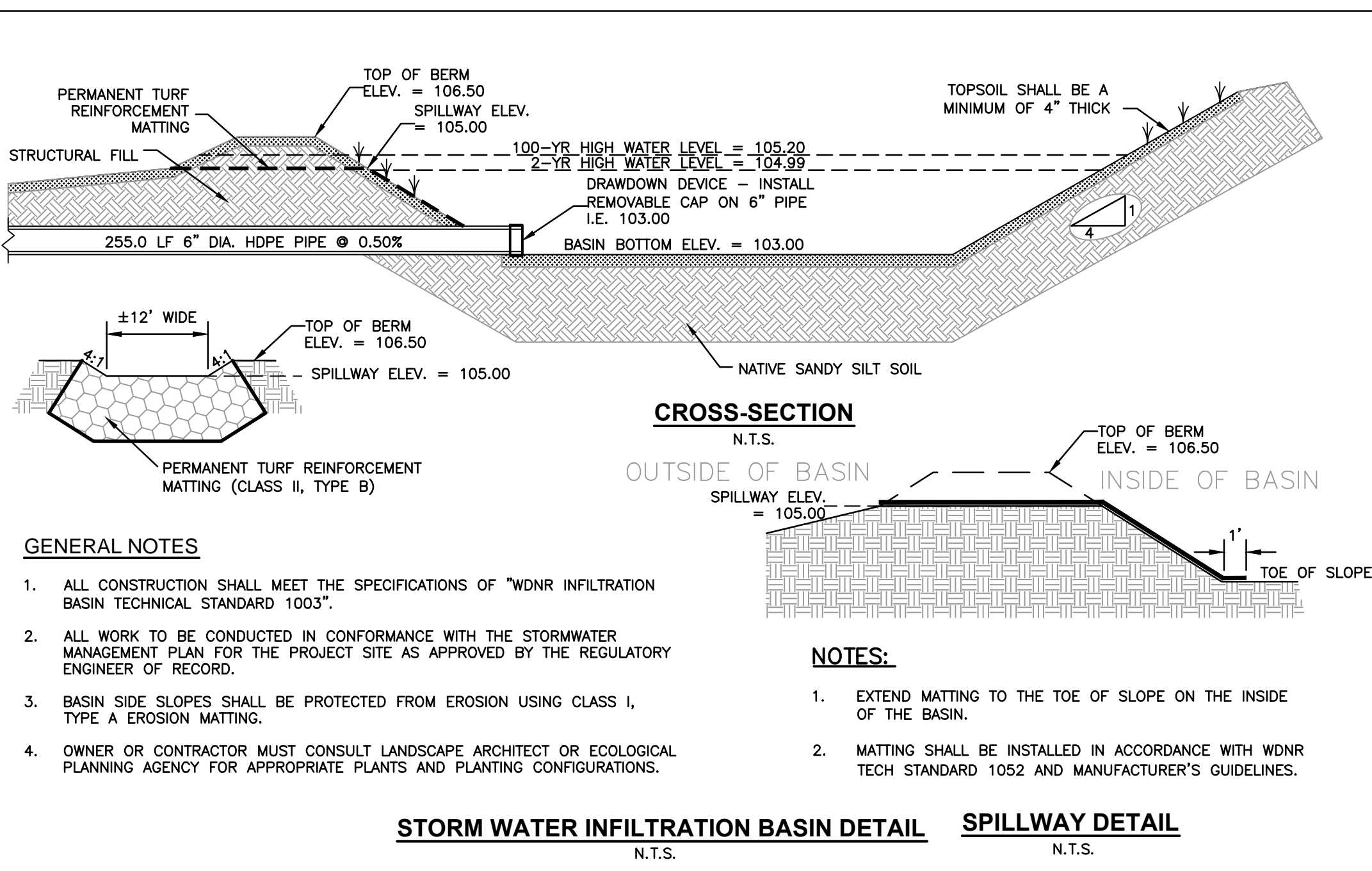
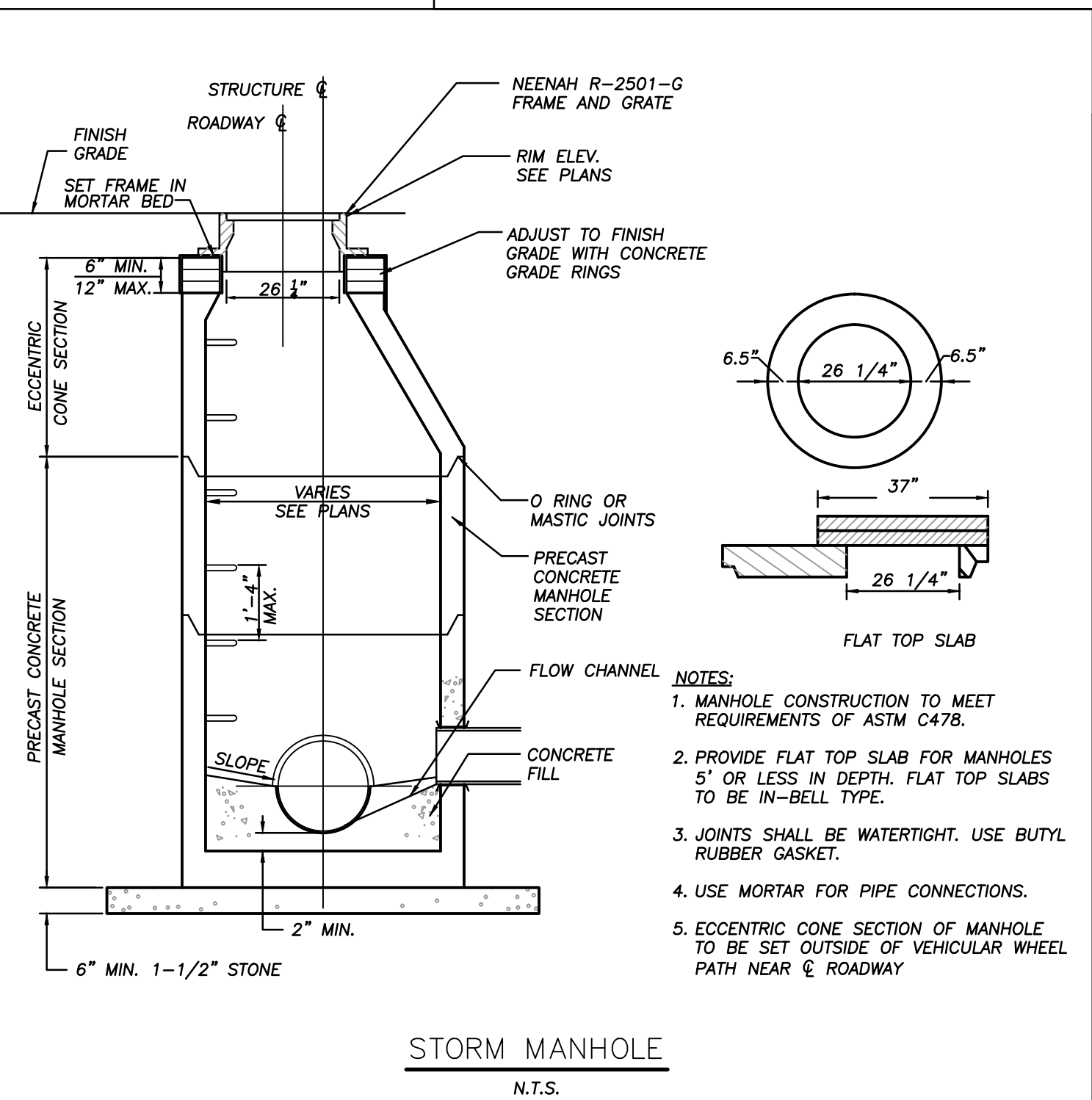
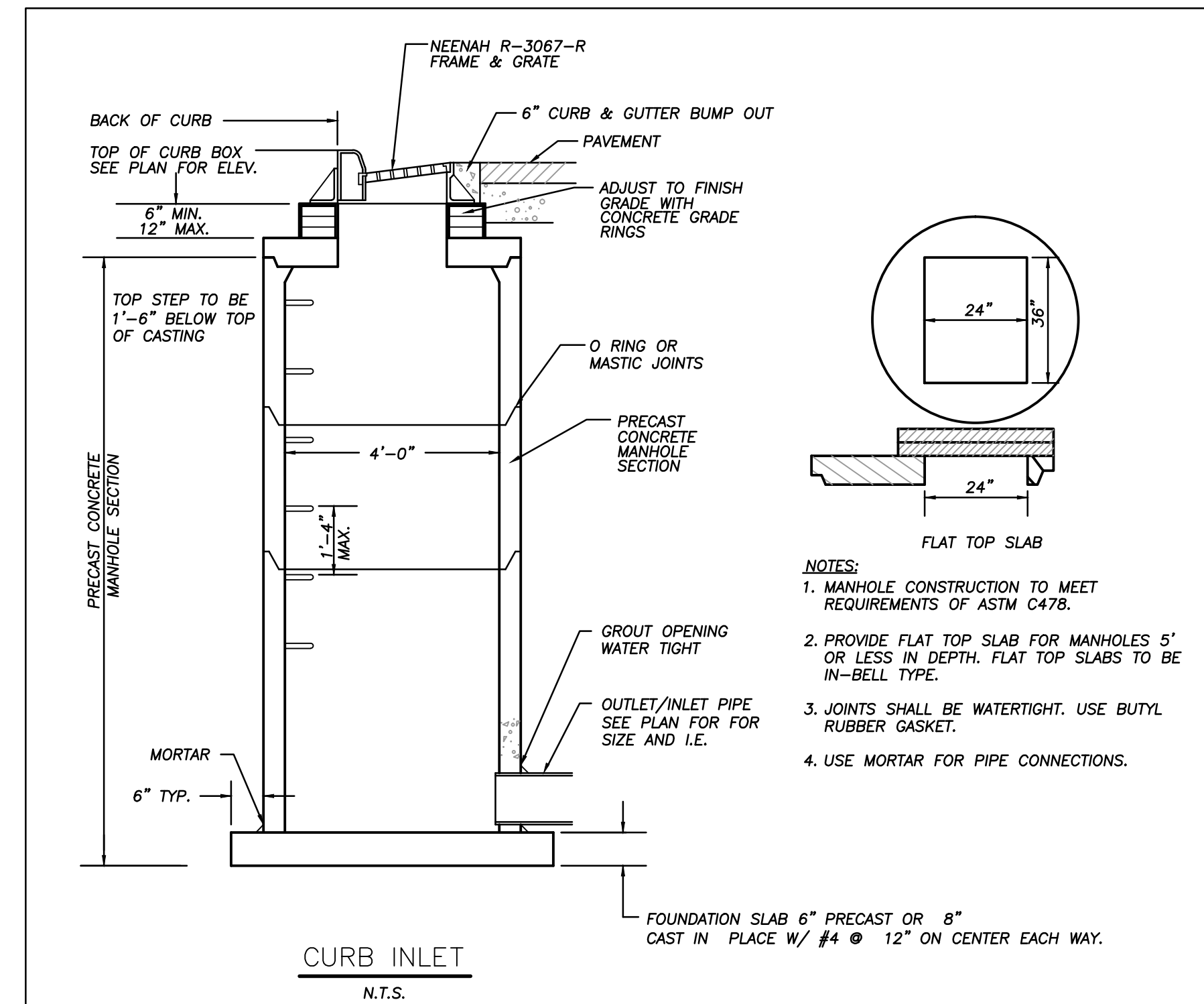
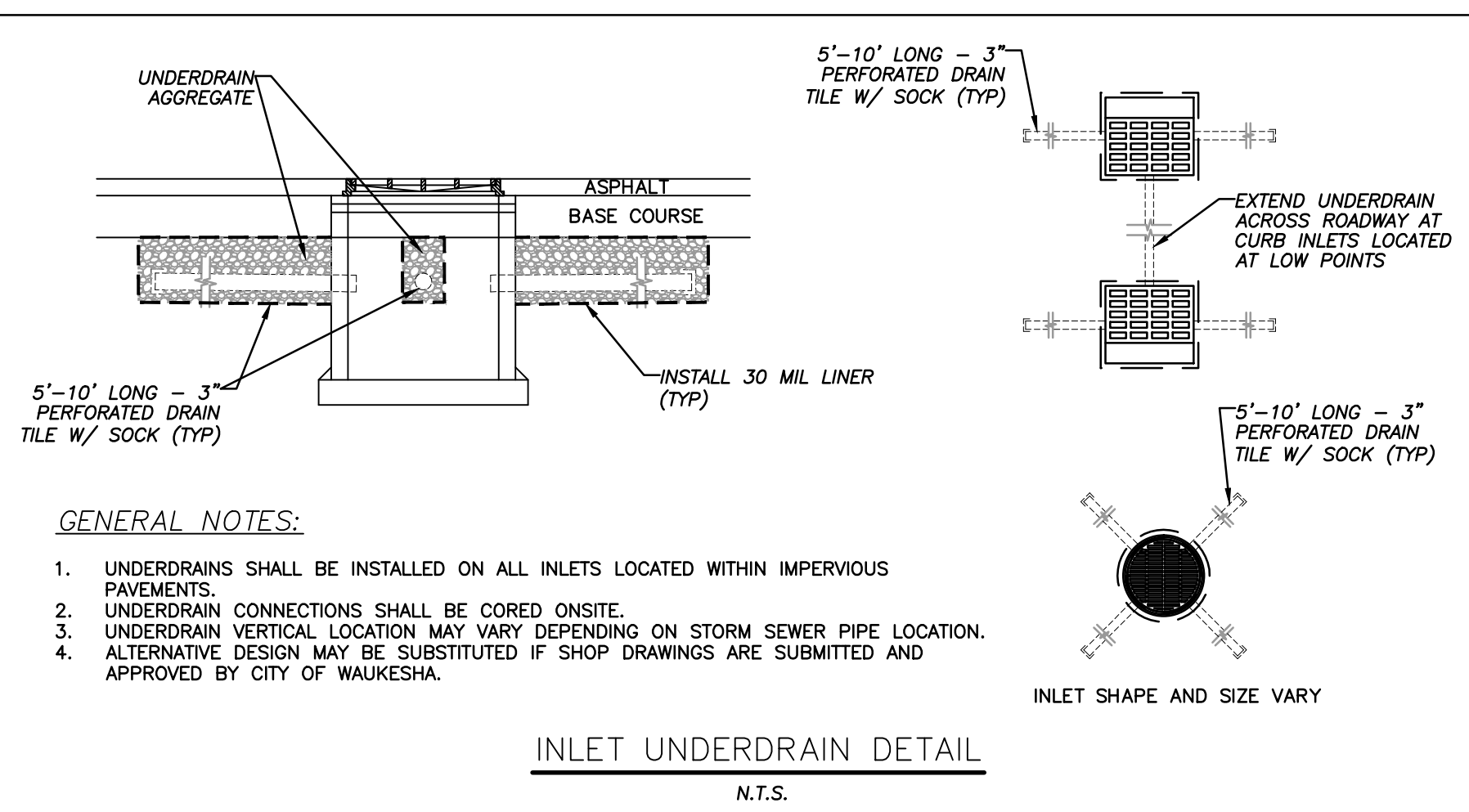
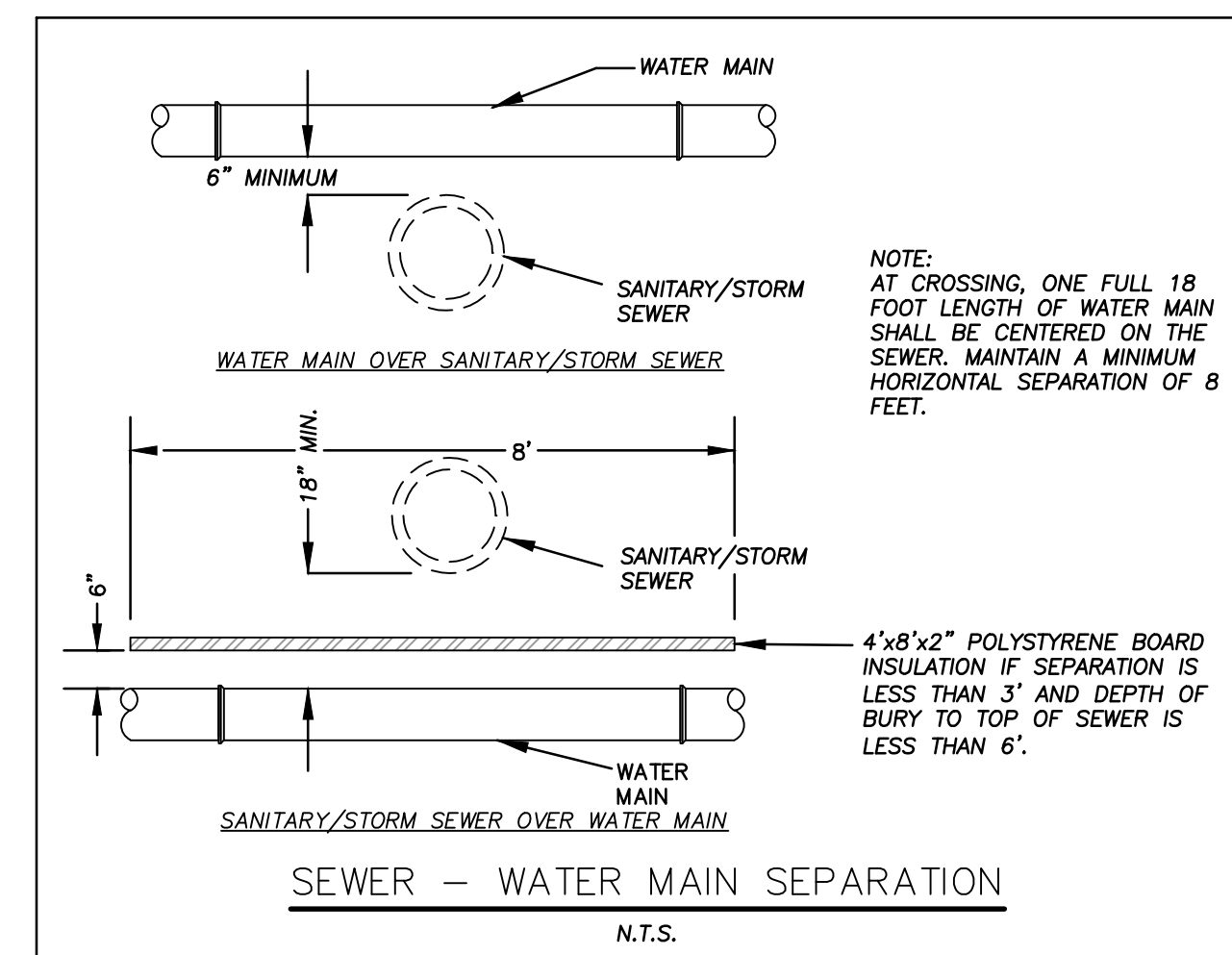
"BUILDING RELATIONSHIPS WITH A COMMITMENT TO CLIENT SATISFACTION THROUGH TRUST, QUALITY AND EXPERIENCE"

- CIVIL ENGINEERING
- SURVEYING & MAPPING
- CONSTRUCTION SERVICES
- WATER RESOURCES
- PLANNING & DEVELOPMENT
- TRANSPORTATION ENGINEERING
- LANDSCAPE ARCHITECTURE

MILWAUKEE REGIONAL OFFICE  
 N22 W22931 NANCY'S COURT SUITE 3  
 WAUKESHA, WISCONSIN 53186  
 262.513.0666 PHONE | 262.513.1232 FAX

MADISON | MILWAUKEE  
 KENOSHA | APPLETON  
 www.jsdinc.com

SERVICES PROVIDED TO:



IT IS THE CONTRACTOR'S RESPONSIBILITY TO ENSURE PROPER CONSTRUCTION PRACTICES HAVE BEEN UTILIZED AND THAT STORMWATER MANAGEMENT FEATURES HAVE BEEN CONSTRUCTED IN ACCORDANCE WITH APPROVED DESIGN PLANS. JSD, INC. SHALL NOT BE LIABLE FOR ANY CONSTRUCTION PRACTICES OR INSTALLATION WHICH DEVIATES FROM THE APPROVED PLAN SET. ONCE THE OWNER HAS PROVIDED FINAL APPROVAL TO THE WORK PERFORMED BY THE CONTRACTOR AND ENSURED COMPLIANCE WITH THE PLAN, IT IS THE OWNER'S RESPONSIBILITY TO MAINTAIN STORMWATER MANAGEMENT FEATURES IN ACCORDANCE WITH THE RECORDED MAINTENANCE AGREEMENT. PROPER OPERATION IS DEPENDENT ON A MULTITUDE OF VARIABLES INCLUDING WEATHER. THESE COMPONENTS REQUIRE ONGOING MAINTENANCE FOR WHICH THE OWNER IS RESPONSIBLE. JSD TAKES NO RESPONSIBILITY FOR PROPER OPERATION OF THE WATER QUALITY COMPONENTS.

PROJECT:  
**DENTAL ASSOCIATES**

PROJECT LOCATION:  
 WAUKESHA  
 WAUKESHA COUNTY, WI

JSD PROJECT NO.: 15-6779

SEAL/SIGNATURE:

ALTHOUGH EVERY EFFORT HAS BEEN MADE IN PREPARING THESE PLANS AND CHECKING THEM FOR ACCURACY, THE CONTRACTOR AND SUBCONTRACTORS MUST CHECK ALL DETAIL AND DIMENSIONS OF THEIR TRADE AND BE RESPONSIBLE FOR THE SAME.

DESIGN BY: JJS 06-30-15  
 DRAWN BY: JJS 06-30-15  
 CHECKED BY: TAG 06-30-15

PLAN MODIFICATIONS: DATE:  
 CITY SUBMITTAL 07-13-15

**DIGGERS HOTLINE**  
 Call 811 or (800) 242-8511  
 Milwaukee Area (262) 432-7910  
 Hearing Impaired TDD (800) 542-2289  
 www.DiggersHotline.com

SHEET TITLE:  
**NOTES & DETAILS**

SHEET NUMBER:  
**C401**