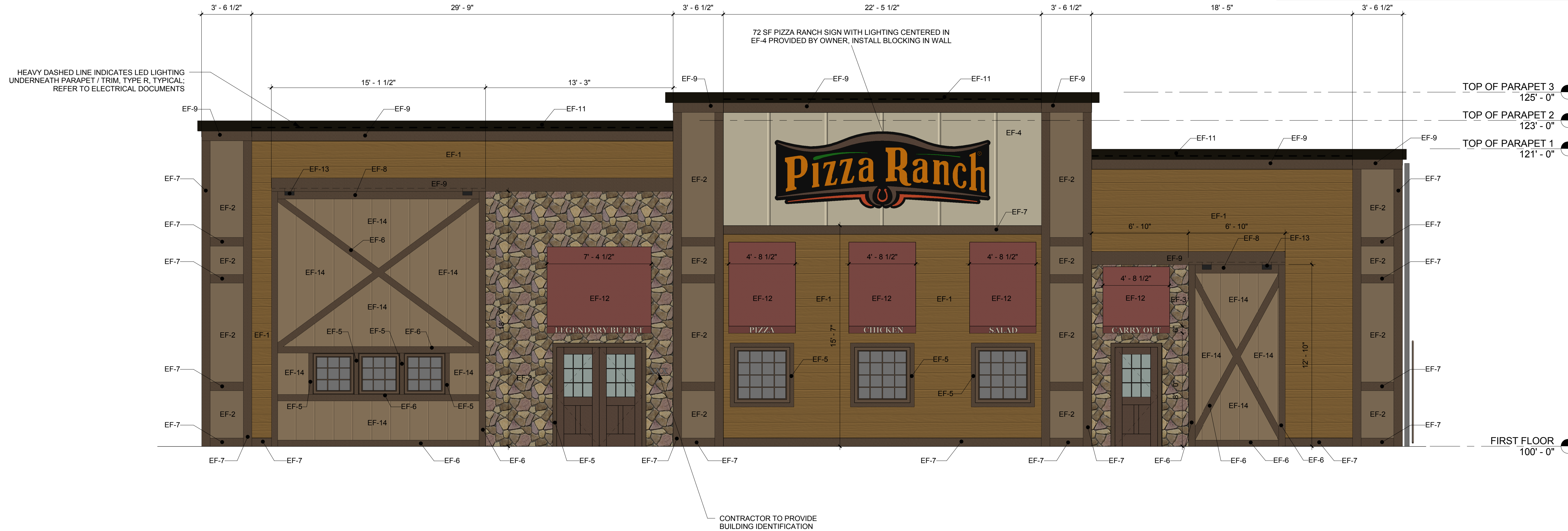


WALL MATERIAL SCHEDULE					
MARK	DESCRIPTION	MANUFACTURER	MODEL	COLOR	COMMENTS
EF-1	ENGINEERED WOOD COMPOSITE	LP BUILDING PRODUCTS	SMARTSIDE	FACTORY FINISHED MAPLE	7" LAP EXPOSURE
EF-2	ENGINEERED WOOD COMPOSITE	LP BUILDING PRODUCTS	SMARTSIDE	PAINT EP-2	SMOOTH, 9 x 4 BOARDS
EF-3	STONE	STONE CRAFT INDUSTRIES	FIELDSTONE	BUCKTOWN	
EF-4	ENGINEERED WOOD COMPOSITE	LP BUILDING PRODUCTS	SMARTSIDE	PAINT EP-4	4'-0" OC SEAMS
EF-12	CANOPY FABRIC	--	--	RUSTIC RED	STRETCH TIGHT OVER METAL FRAME, SUPPLIED BY OWNER/SIGN COMPANY, INSTALLED BY SIGN COMPANY
EF-14	ENGINEERED WOOD COMPOSITE	LP BUILDING PRODUCTS	SMARTSIDE	PAINT EP-2	16" SEAMS

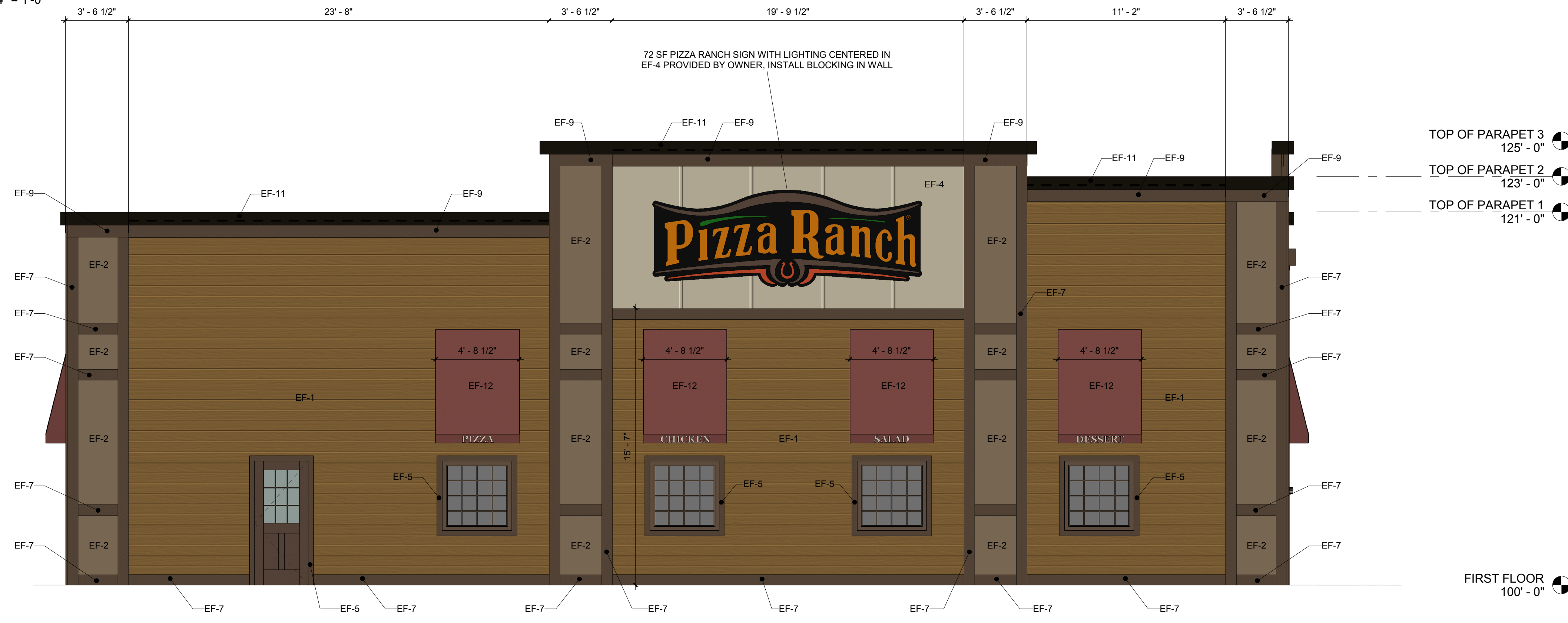
TRIM / ACCENT SCHEDULE					
MARK	MATERIAL TYPE	MANUFACTURER	MODEL	SIZE	COMMENTS
EF-5	ENGINEERED WOOD COMPOSITE	LP BUILDING PRODUCTS	SMARTSIDE	5/4" x 4"	PAINTED EP-1
EF-6	ENGINEERED WOOD COMPOSITE	LP BUILDING PRODUCTS	SMARTSIDE	5/4" x 6"	PAINTED EP-1
EF-7	ENGINEERED WOOD COMPOSITE	LP BUILDING PRODUCTS	SMARTSIDE	5/4" x 8"	PAINTED EP-1
EF-8	ENGINEERED WOOD COMPOSITE	LP BUILDING PRODUCTS	SMARTSIDE	5/4" x 10"	PAINTED EP-1
EF-9	ENGINEERED WOOD COMPOSITE	LP BUILDING PRODUCTS	SMARTSIDE	5/4" x 12"	PAINTED EP-1
EF-13	METAL PLATE	--	--	6" x 8"	PAINTED BLACK
EF-14	ENGINEERED WOOD COMPOSITE	LP BUILDING PRODUCTS	SMARTSIDE	PAINT EP-2	16" SEAMS

EXTERIOR PAINT SCHEDULE				
MARK	MANUFACTURER	FINISH	COLOR	COMMENTS
EP-1	SHERWIN WILLIAMS	FLAT	6083 SABLE	TYP AT EXTERIOR TRIM
EP-2	SHERWIN WILLIAMS	SATIN	6102 PORTABELLO	TYP AT EF-2
EP-3	SHERWIN WILLIAMS	FLAT	7592 CRABBY APPLE	NOT USED
EP-4	SHERWIN WILLIAMS	SATIN	6149 RELAXED KHAKI	TYP AT EF-4

CAP FLASHING SCHEDULE				
MARK	MANUFACTURER	MODEL/TYPE	COLOR	COMMENTS
EF-11	UNA CLAD	SMOOTH	MEDIUM BRONZE	



1 EXTERIOR ELEVATION
1/4" = 1'-0"



2 EXTERIOR ELEVATION
1/4" = 1'-0"



PRELIMINARY
NOT FOR CONSTRUCTION

I HEREBY CERTIFY THAT THIS PLAN, SPECIFICATION OR REPORT WAS PREPARED BY ME OR UNDER MY DIRECT SUPERVISION AND THAT I AM A DULY LICENSED PROFESSIONAL ENGINEER UNDER THE LAWS OF THE STATE OF MINNESOTA.

DATE _____ LIC. NO. _____

I HEREBY CERTIFY THAT THIS PLAN, SPECIFICATION OR REPORT WAS PREPARED BY ME OR UNDER MY DIRECT SUPERVISION AND THAT I AM A DULY LICENSED ARCHITECT UNDER THE LAWS OF THE STATE OF MINNESOTA.

DATE _____ LIC. NO. _____

THIS DOCUMENT IS THE PROPERTY OF I & S GROUP, INC. AND MAY NOT BE USED, COPIED OR DUPLICATED WITHOUT PRIOR WRITTEN CONSENT.

PROJECT

PIZZA RANCH RESTAURANT

ANYWHERE USA

REVISION SCHEDULE		
DATE	DESCRIPTION	BY

PROJECT NO.	16-19022
FILE NAME	19022 Arch R16_2
DRAWN BY	DJR
DESIGNED BY	JPW, JLW
REVIEWED BY	JPW, JLW
ORIGINAL ISSUE DATE	06/23/2017
CLIENT PROJECT NO.	

- SHEET NOTES**
- REFER TO ADDITIONAL NOTES AND REQUIREMENTS ON ALL OTHER DOCUMENTS AND OTHER DISCIPLINES' DOCUMENTS.
 - ALL HORIZONTAL TRANSITIONS BETWEEN DIFFERENT MATERIALS SHALL BE FLASHED CONTINUOUS FROM UP BEHIND TO UNDER UPPER MATERIAL AND EXTEND OVER TO EXTERIOR FACE OF LOWER MATERIAL.
 - ALL RETURNS OR BLIND ELEVATIONS NOT SHOWN SHALL BE SIMILAR IN MATERIAL AND MAKEUP TO ADJACENT CONDITIONS OR OTHER SIMILAR CONDITIONS.
 - SEAL ALL TRANSITIONS, CONTROL AND EXPANSION JOINTS AT ALL EXTERIOR MATERIALS.
 - INSULATE AND SEAL TO ENSURE ADEQUATE AIR INFILTRATION BARRIER AROUND ALL EXTERIOR PENETRATIONS TO PREVENT WATER AND SPRINKLER PIPE FREEZING.
 - PROVIDE POWER TO ALL BUILDING MOUNTED SIGNS. PROVIDE EXTERIOR LED LIGHTING ON PARAPET. CONTACT JUSTIN MULDER (1-800-321-3401) FOR LOCATIONS.

EXTERIOR ELEVATIONS

SHEET
A2-11