

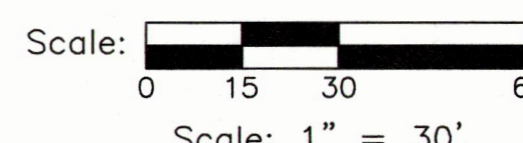
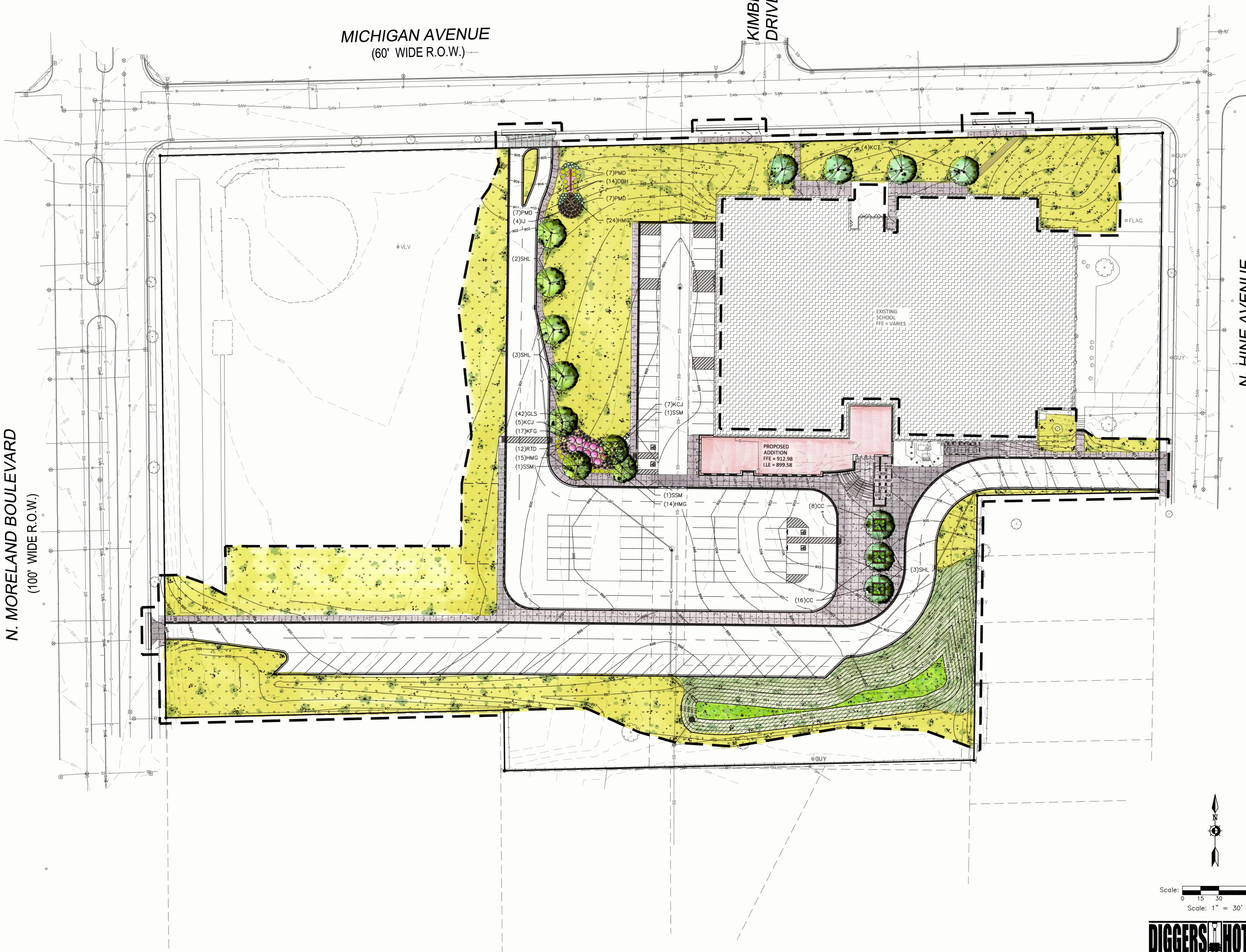
6/21/2019 10:49:10 AM
B:\362\3353 - Waukesha SD\3353 - Waukesha SD\2018-12-21_ARCH\RT18.rvt

N. MORELAND BOULEVARD
(100' WIDER R.O.W.)

MICHIGAN AVENUE
(60' WIDER R.O.W.)

KIMBERLY
DRIVE

N. HINE AVENUE
(60' WIDER R.O.W.)



Scale: 1" = 30'

DIGGERS HOTLINE
Dial 811 or (800)242-8511
www.DiggersHotline.com



Office Locations:

Davenport
220 Emerson Place, Suite 301
Davenport, Iowa 52801

Milwaukee
829 S. 1st Street
Milwaukee, Wisconsin 53204
T: 414.226.0200

Sheboygan
1227A North 8th Street
PO Box 955
Sheboygan, Wisconsin 53082
T: 920.459.4200

www.brayarch.com



7711 N. Post Washington Road
Milwaukee, WI 53217
www.kapurnr.com

Project Title:
**Addition and Remodeling to:
Butler Middle School
School District of Waukesha
310 N. Hine Ave., Waukesha, WI 53188**

REVISIONS:

DATE	DESCRIPTION

**NOT FOR
CONSTRUCTION**

Project Number:
3353

Issued For:
**75% PROGRESS
SET
10/03/2019**

Sheet Title:
**SITE LANDSCAPE
PLAN**

Sheet Number:
L1.1

© 2019 Bray Associates Architects, Inc.