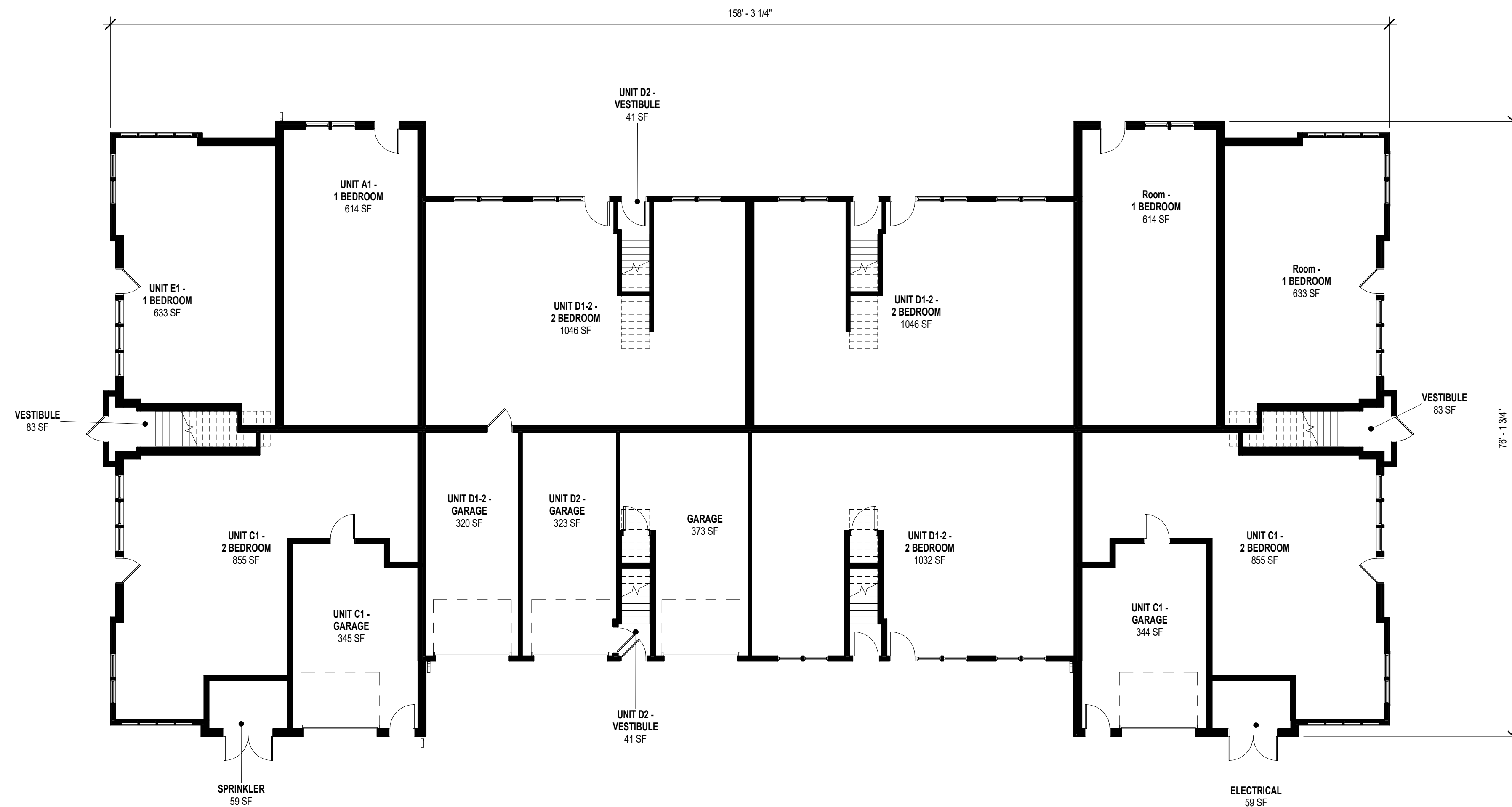


NOT FOR
CONSTRUCTION



1 17 UNIT BUILDING - FIRST FLOOR PLAN
1" = 10'-0"

Revisions

Schematic

SCOPE DOCUMENTS

Drawing Date
11/07/18

WHITE ROCK
APARTMENTS

21-UNIT APARTMENT BUILDING

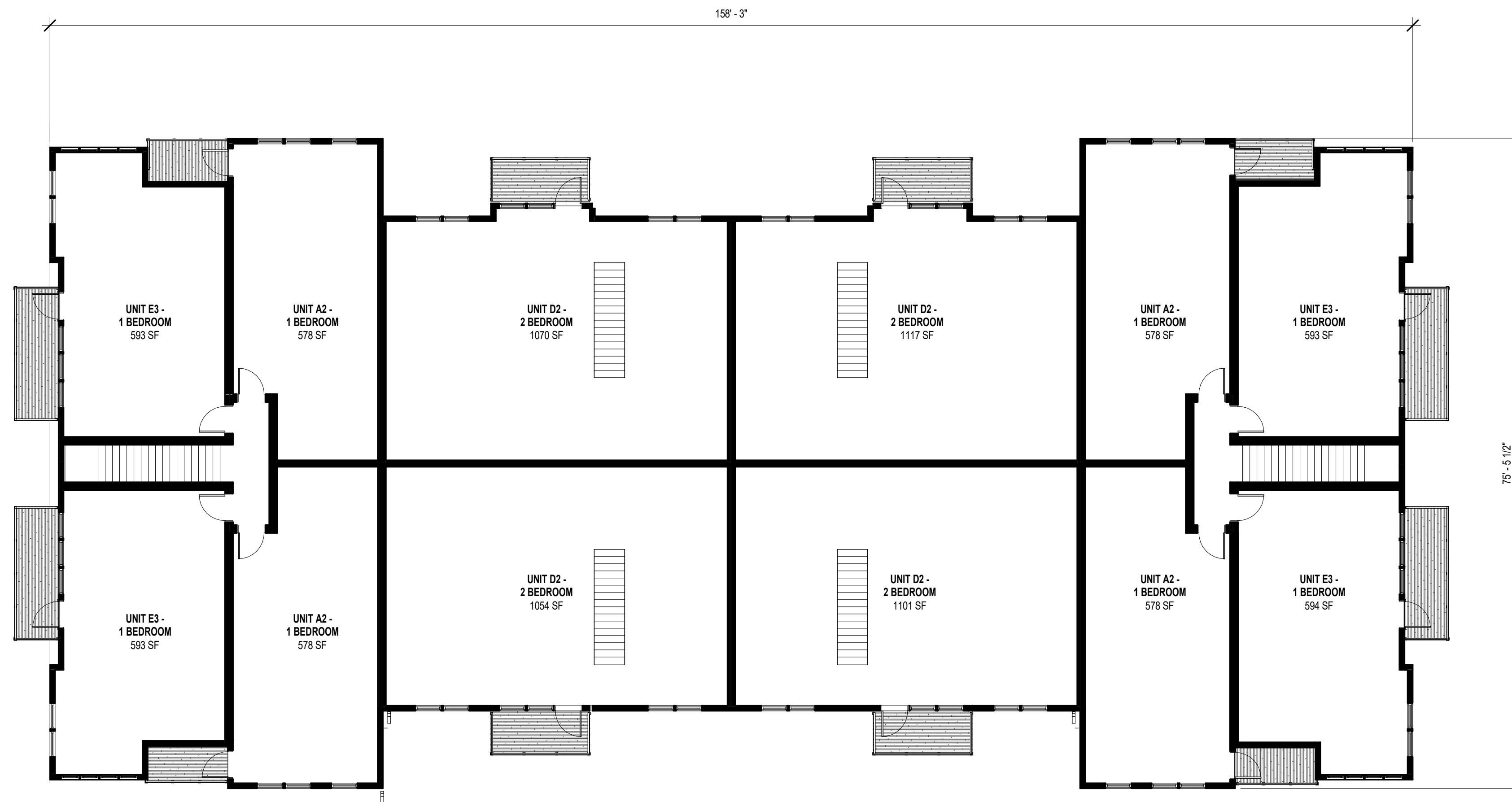
Project No. BEAR DEVELOPMENT
218061.00 000123

Sheet Title
FIRST FLOOR PLAN

Copyright © 2018 Kahler Slater, Inc. All rights reserved.
111 West Wisconsin Avenue, Milwaukee, Wisconsin 53203
Telephone 414.272.2000 Fax 414.272.2001
44 East Mifflin Street, Suite 700, Madison, Wisconsin 53703
Telephone 608.283.6300 Fax 608.283.6317

Sheet No.
ASK-001

NOT FOR
CONSTRUCTION



Revisions

Schematic

SCOPE DOCUMENTS

Drawing Date
11/07/18

WHITE ROCK
APARTMENTS

21-UNIT APARTMENT BUILDING

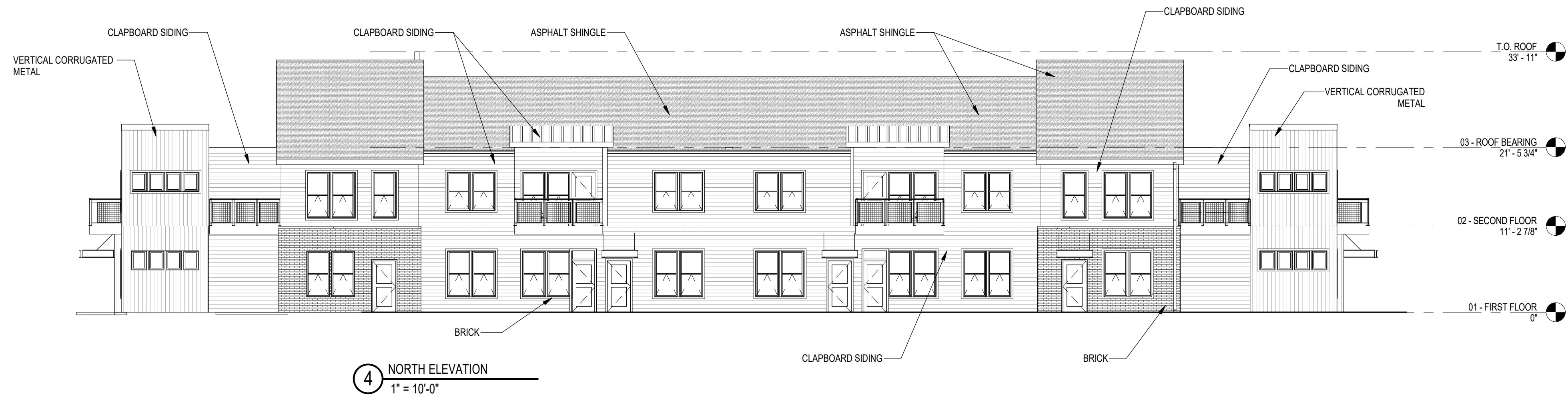
Project No. BEAR DEVELOPMENT
218061.00 000123

Sheet Title
SECOND FLOOR PLAN

① 17 UNIT BUILDING - SECOND FLOOR PLAN
1" = 10'-0"

Copyright © 2018 Kahler Slater, Inc. All rights reserved.
111 West Wisconsin Avenue, Milwaukee, Wisconsin 53203
Telephone 414.272.2000 Fax 414.272.2001
44 East Mifflin Street, Suite 700, Madison, Wisconsin 53703
Telephone 608.283.6300 Fax 608.283.6317

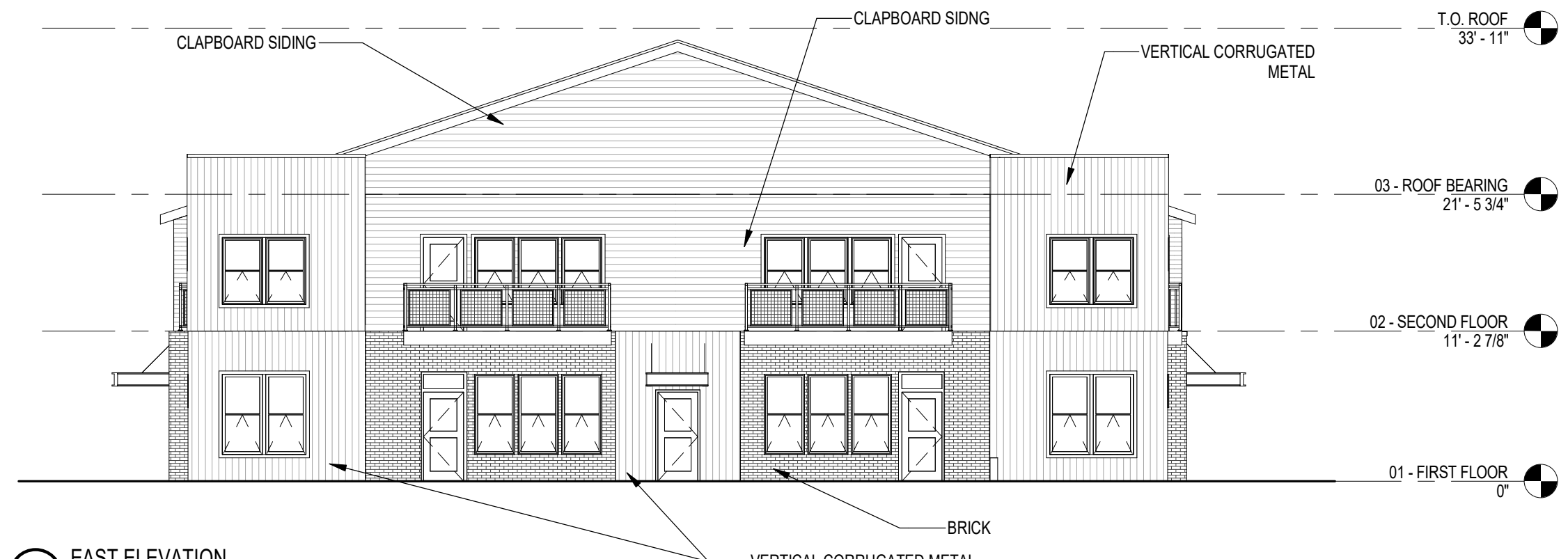
Sheet No.
ASK-002



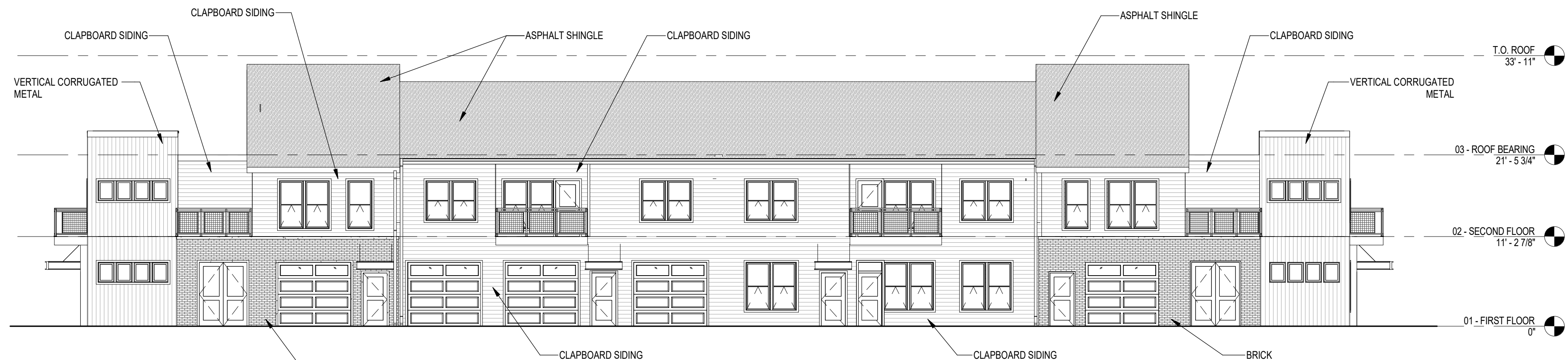
4 NORTH ELEVATION
1" = 10'-0"



3 WEST ELEVATION
1" = 10'-0"



2 EAST ELEVATION
1" = 10'-0"



1 SOUTH ELEVATION
1" = 10'-0"

NOT FOR CONSTRUCTION

Revisions

Schematic

SCOPE DOCUMENTS

Drawing Date
11/07/18

WHITE ROCK APARTMENTS

21-UNIT APARTMENT BUILDING

Project No. BEAR DEVELOPMENT
218061.00 000123

Sheet Title
ELEVATIONS

Copyright © 2018 Kahler Slater, Inc. All rights reserved.
111 West Wisconsin Avenue, Milwaukee, Wisconsin 53203
Telephone 414.272.2000 Fax 414.272.2001
44 East Mifflin Street, Suite 700, Madison, Wisconsin 53703
Telephone 608.283.6300 Fax 608.283.6317

Sheet No.
ASK-003