



① PROPOSED 1.3
12" = 1'-0"



② PROPOSED 2.2
12" = 1'-0"



Building a Better World
for All of Us®

Owner
Carsch, Inc.
681 East Lake Street, Suite 262
Wayzata, Minnesota 55391
952.475.4953

Architect
Brian Cooley, AIA
Short Elliott Hendrickson, Inc.
159 North Jackson Street, Suite 106
Milwaukee, Wisconsin 53202-6169
414.465.1200

Landscape Architect
Short Elliott Hendrickson, Inc.
6808 Odana Road, Suite 2000
Madison, Wisconsin 53719-1137
608.620.6199

Civil Engineer
Short Elliott Hendrickson, Inc.
501 Maple Avenue
Delafield, Wisconsin 53018
262.646.6855

Structural Engineer
XXX
Contact: Patrick Reynolds
STREET
Milwaukee, Wisconsin 53XXX
414.XXX.XXXX

Interior
Charter House Holdings, LLC
200 North Franklin
Zeeland, Michigan 49464
616.399.6000

Signs
Persona - Sign Up Company
700 21st Street Southwest
PO Box 210
Watertown, South Dakota 57201
800.843.9888

General Contractor
Contact: Mike Miksich
Brion Building Corporation
3885 N. Brookfield Road, Suite 200
Brookfield, Wisconsin 53045
262.790.0500

Carsch Inc.
Arby's - Waukesha
2330 E. MORELAND BLVD
WAUKESHA, WISCONSIN 53186

This drawing is an instrument of service and shall remain the property of SEH, Inc. The drawing and the concepts and ideas contained herein shall not be used, reproduced, revised, or retained without the express written approval of SEH, Inc.
Submission or distribution of this drawing to meet official or regulatory requirements or for other purposes in connection with the project is not to be construed as publication in derogation of any of the rights of SEH, Inc.

SEH Project 145888
Checked By SC
Drawn By MRC

Project Status Issue Date

Revision Issue
Rev. # Description Date

PROPOSED

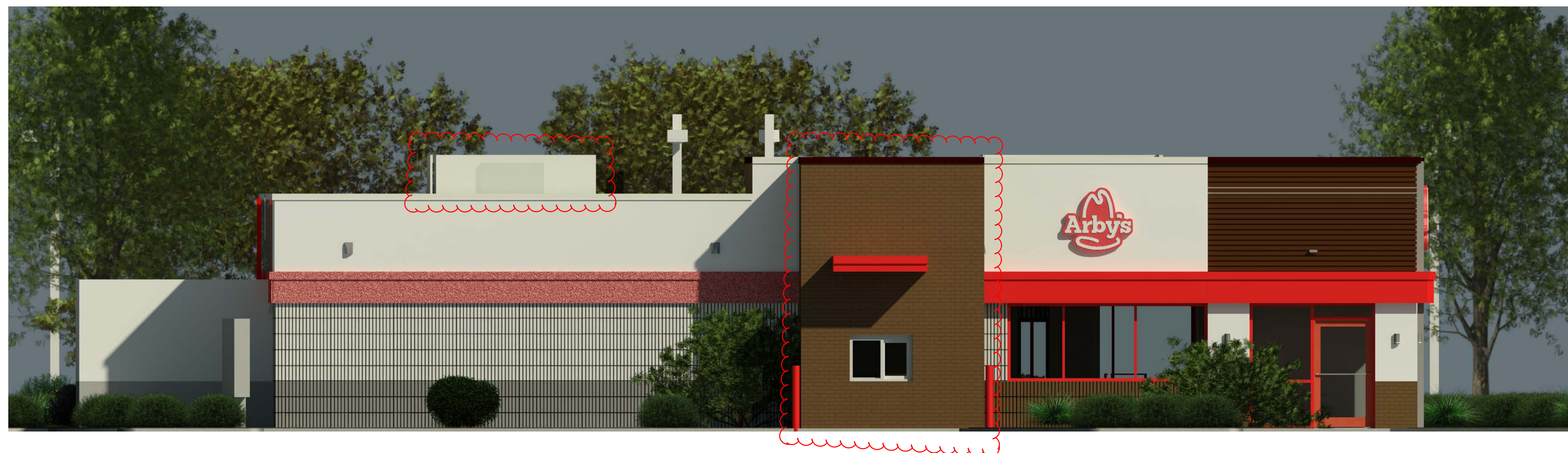
AR2.0



① East Elevation
12" = 1'-0"



② North Elevation
12" = 1'-0"



③ South Elevation
12" = 1'-0"



Building a Better World
for All of Us®

Owner
Carsch, Inc.
681 East Lake Street, Suite 262
Wayzata, Minnesota 55391
952.475.4953

Architect
Brian Cooley, AIA
Short Elliott Hendrickson, Inc.
159 North Jackson Street, Suite 106
Milwaukee, Wisconsin 53202-6169
414.465.1200

Landscape Architect
Short Elliott Hendrickson, Inc.
6808 Odana Road, Suite 2000
Madison, Wisconsin 53719-1137
608.620.6199

Civil Engineer
Short Elliott Hendrickson, Inc.
501 Maple Avenue
Delafield, Wisconsin 53018
262.646.6855

Structural Engineer
XXX
Contact: Patrick Reynolds
STREET
Milwaukee, Wisconsin 53XXX
414.XXX.XXXX

Interior
Charter House Holdings, LLC
200 North Franklin
Zeeland, Michigan 49464
616.399.6000

Signs
Persona - Sign Up Company
700 21st Street Southwest
PO Box 210
Watertown, South Dakota 57201
800.843.9888

General Contractor
Contact: Mike Miksich
Brion Building Corporation
3885 N. Brookfield Road, Suite 200
Brookfield, Wisconsin 53045
262.790.0500

Carsch Inc.
Arby's - Waukesha
2330 E. MORELAND BLVD
WAUKESHA, WISCONSIN 53186

This drawing is an instrument of service and shall remain the property of SEH, Inc. The drawing and the concepts and ideas contained herein shall not be used, reproduced, revised, or retained without the express written approval of SEH, Inc.
Submission or distribution of this drawing to meet official or regulatory requirements or for other purposes in connection with the project is not to be construed as publication in derogation of any of the rights of SEH, Inc.

SEH Project 145888
Checked By SC
Drawn By MRC

Project Status Issue Date

Revision Issue
Rev. # Description Date

PROPOSED ELEVATIONS

AR2.1

SLIM12



Fixture A
Accent Uplight - See Cut Sheets



Fixture B
Accent Light - See Cut Sheets

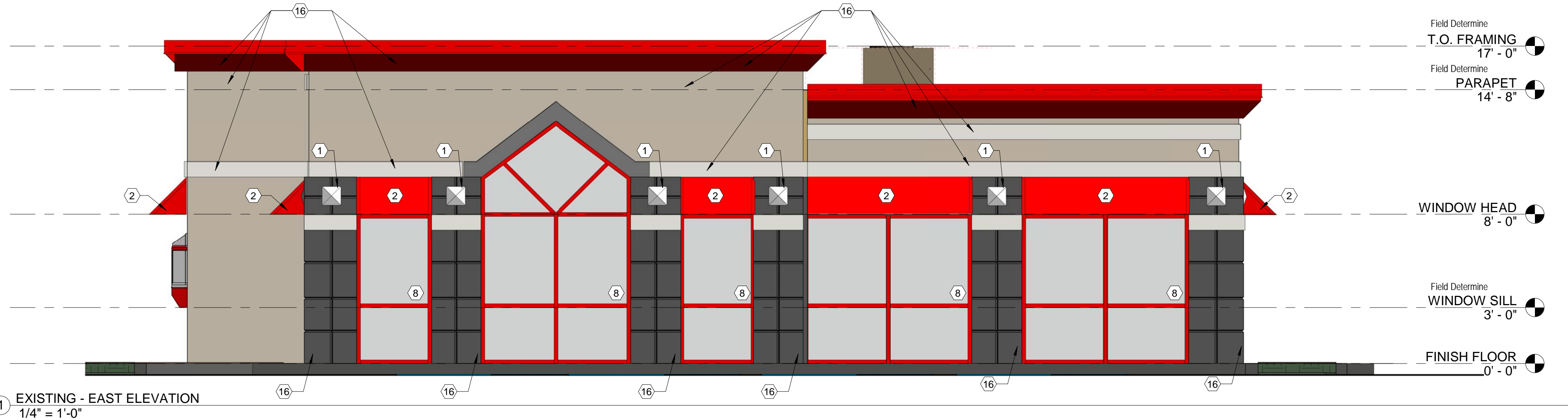


Brick / Dryvit

DEMOLITION KEYED NOTES

- REMOVE EXISTING EXTERIOR LIGHTING.
- REMOVE EXISTING AWNINGS.
- REMOVE INTERIOR FINISHES, FIXTURES AND EQUIPMENT IN DINING ROOM.
- REMOVE PLUMBING FIXTURES AND ACCESSORIES IN RESTROOMS.
- REMOVE COUNTERTOP. MODIFY KNEEWALL AS REQUIRED.
- TRENCH FLOOR AS REQUIRED TO RELOCATED SODA DISPENSER IN DINING ROOM AND DRIVE THRU.
- DISCONNECT PLUMBING AND ELECTRICAL CONNECTIONS PRIOR TO REMOVAL. TRENCH FLOOR AS REQUIRED TO EXTEND ELECTRICAL FEED TO SUB-PANEL IN NEW PRODUCTION COUNTER.
- REUSE EXISTING WINDOW FRAMES. PREPARE FOR NEW FINISH AND GLAZING. VERIFY WITH OWNER.
- VERIFY SCOPE OF WORK IN KITCHEN AND BACK OF HOUSE WITH OWNER. RELOCATE UTILITIES AS REQUIRED FOR NEW LAYOUT. CAP ALL ABANDONED UTILITIES.
- DRIVE THRU WINDOW TO BE REPLACE WINDOW. VERIFY SIZE AND INSTALL REQUIREMENTS OF NEW WINDOW UNIT.
- NOT USED.
- REMOVE BEVERAGE AND CONDIMENT COUNTER. CAP ALL ABANDONED UTILITIES.
- REMOVE EXISTING DOOR, FRAME AND CASING. REPLACE WITH STYLE AND TYPE SPECIFIED IN DECOR DRAWINGS AND COMPLIANT WITH APPLICABLE CODES.
- REUSE EXISTING VESTIBULE DOORS. PREPARE FOR NEW FINISH.
- REUSE REAR DOOR. PREPARE FOR NEW FINISH.
- REMOVE EXISTING EIFS AND TRIM. PREPARE WALL STRUCTURE TO RECEIVE NEW FINISH.
- REMOVE LOW WALL.
- REMOVE FLOOR FINISHES. PREPARE TO RECEIVE NEW FINISHES AS SCHEDULED.
- REMOVE WALL FINISHES. PREPARE WALL FOR NEW FINISHES AS SCHEDULED.

DEMOLITION KEYED NOTES
1/4" = 1'-0"



1 EXISTING - EAST ELEVATION
1/4" = 1'-0"

FINISH SCHEDULE

MARK	MANUFACTURER	DESCRIPTION	NOTES
A1	DRYVIT	EFIS WALL SYSTEM	COLOR: ARBY081030 TEXTURE: STANDARD
A2	NOT USED	--	--
B	NOT USED	--	--
C1	DRYVIT	EFIS WALL SYSTEM	COLOR: ARBY081030 TEXTURE: STANDARD
C2	DRYVIT	EFIS WALL SYSTEM WITH V-GROOVE REVEAL AT 4" O.C.	COLOR: ARBY081030 TEXTURE: STANDARD
C3	DRYVIT	EFIS WALL SYSTEM WITH V-GROOVE REVEAL AT 8" O.C.	COLOR: ARBY081030 TEXTURE: STANDARD
D	SHERWIN WILLIAMS	SW #6869 STOP	SATIN FINISH
E	NOT USED	--	--
F	SHERWIN WILLIAMS	SW #7024 FUNCTIONAL GRAY	SATIN FINISH
G	SHERWIN WILLIAMS	SW #2808 ROCKWOOD DARK BROWN	SATIN FINISH
H	COUNTY MATERIALS	BRICK - HERITAGE COLLECTION	WHITE
J	COUNTY MATERIALS	BRICK - HERITAGE COLLECTION	SABLE
K	SHERWIN WILLIAMS	SW #7005 PURE WHITE	SATIN FINISH

METALS

A	EXCEPTIONAL METALS/DURO-LAST	TWO-PIECE SNAP-ON METAL COPINGREGAL WHITE / DURO-LAST #SR70TE87	FOR USE WITH DURO-LAST ROOFING SYSTEM DETAIL FA310
B	EXCEPTIONAL METALS/DURO-LAST	TWO-PIECE SNAP-ON METAL COPING DARK BRONZE / DURO-LAST #SR26TE84	FOR USE WITH DURO-LAST ROOFING SYSTEM DETAIL FA310
C	PRE-FABRICATED CANOPY/BAND	PRODUCT CODE: 9940-30198R PRODUCT NAME: FC SD RAL 3000 FLAME RED	
D	PRE-FABRICATED POST	PRODUCT CODE: 9840-80957R PRODUCT NAME: FC SD RAL 8017 CHOC. BROWN	

- NOTES:**
- PAINT ALL EXPOSED METERS, SERVICE ENTRANCES, GAS PIPE, ROOF ACCESS LADDER, ETC. TO MATCH ADJACENT EXTERIOR WALL SURFACE.
 - MAKE SURE THAT WALL WEEPS AND FLASHING ARE INSTALLED CORRECTLY. DO NOT BLOCK WEEPS.
 - ALUMINUM STOREFRONT TO BE DARK BRONZE. REFER TO SUCCESSOR LICENSING SCOPE OF WORK.
 - ALL EXTERIOR GLAZING TO BE 1" INSULATED GLAZING.
 - BASIS OF DESIGN FOR THE EFIS WALL SYSTEM IS DRYVIT OUTSULATION PLUS MD. EFIS WALL SYSTEM IS 2" THICK UNLESS NOTED OTHERWISE. INSTALL EFIS PRODUCT IN STRICT ACCORDANCE WITH MANUFACTURER'S SPECIFICATIONS AND DETAILS.
 - SIGNAGE IS SHOWN FOR REFERENCE ONLY. FINAL SIZE, LOCATION AND QUANTITY TO BE DETERMINED BY SIGNAGE VENDOR. SIGNAGE VENDOR SHALL PERMIT ALL SIGNS UNDER SEPARATE COVER.

FINISH SCHEDULE
1/4" = 1'-0"

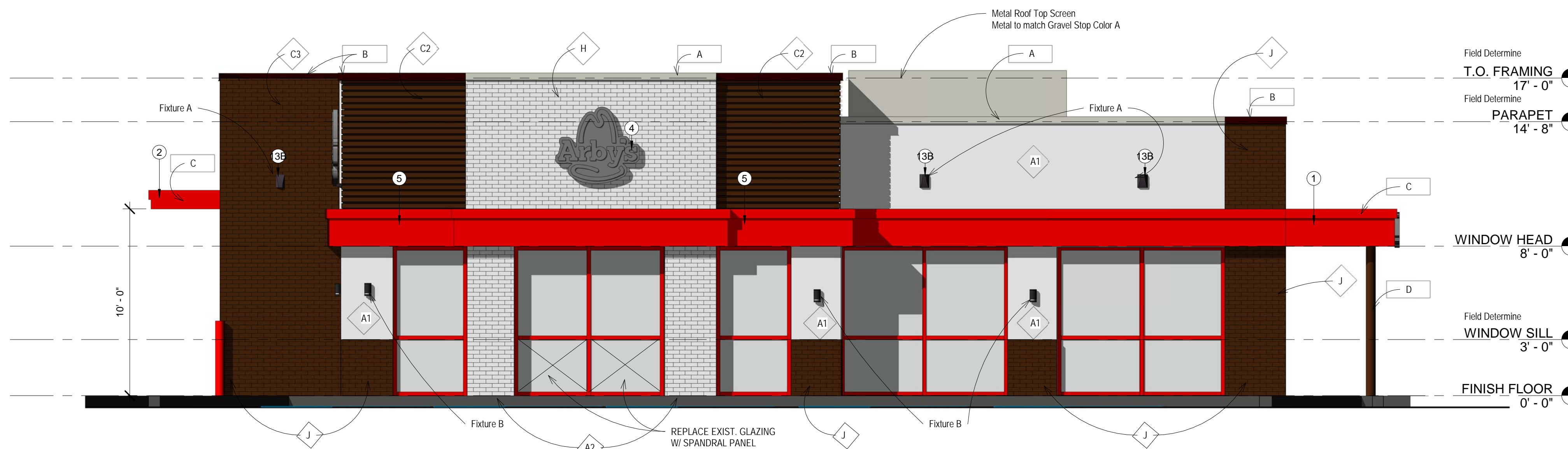
DESIGN NOTES

THE FOLLOWING ARE THE PROTOTYPICAL SCOPE OF WORK NOTES FOR THE REMODELING OF YOUR STORE INTO THE REQUIRED INSPIRE IMAGE.

FRANCHISEES ARE TO REFER TO THE SECTION SCOPE OF WORK PREPARED BY THEIR OPERATIONS CONSULTANT FOR THE SCOPE OF WORK "SPECIFIC" TO THEIR STORE.

- INSTALL CANOPY/ACCENT BAND AT 8'-0" A.F.F.
- CENTER DRIVE THRU CANOPY ON DRIVE THRU WINDOW.
- INSTALL RED EIFS ACCENT BAND AT 8'-0" A.F.F.
- INSTALL ARBY'S HAT SIGN ON ACCENT BAND, CENTER.
- INSTALL ARBY'S LETTERSET IN WHITE CENTERED ON CANOPY.
- INSTALL BRICK PATTERNED EIFS:
 - ON FRONT OF BUILDING, ALIGN WITH JAMB OF MIDDLE WINDOW BELOW.
 - EXTEND TO BOTTOM OF WALL, ON BOTH SIDES OF FIRST WINDOW.
 - WRAP CORNER OF BUILDING AND EXTEND TO FIRST WINDOW ON MAIN ENTRANCE SIDE OF BUILDING.
 - USE WHITE METAL COPING AT TOP OF WALL.
- INSTALL BROWN EIFS WITH 4" O.C. V-GROOVES:
 - ON FRONT OF BUILDING FROM EDGE OF BRICK PATTERNED EIFS TO THE CORNER OF THE BUILDING.
 - ON SIDE OF BUILDING FROM THE CORNER TO THE DRIVE THRU BUMP-OUT, ABOVE THE ACCENT BAND ONLY.
 - USE BROWN METAL COPING AT TOP OF WALL.
- INSTALL BROWN EIFS WITH 8" O.C. V-GROOVES AT THE DRIVE THRU BUMP-OUT. USE BROWN METAL COPING AT TOP OF WALL.
- PATCH AND REPAIR EXISTING EIFS AND PAINT WHITE. REPLACE EIFS AS REQUIRED.
- INSTALL WALL MOUNTED UPLIGHT FIXTURE
 - AT 12'-0" O.C., AT 11'-6" AFF.
 - AT 11'-6" AFF.
 - AT 11'-6" AFF.
- INSTALL NEW DRIVE THRU WINDOW. VERIFY STYLE WITH OWNER.

DESIGN NOTES
1/4" = 1'-0"



2 PROPOSED - EAST ELEVATION
1/4" = 1'-0"



Owner
Carsch, Inc.
681 East Lake Street, Suite 262
Wayzata, Minnesota 55391
952.475.4953

Architect
Brian Cooley, AIA
Short Elliott Hendrickson, Inc.
159 North Jackson Street, Suite 106
Milwaukee, Wisconsin 53202-6169
414.465.1200

Landscape Architect
Short Elliott Hendrickson, Inc.
6808 Odana Road, Suite 2000
Madison, Wisconsin 53719-1137
608.620.6199

Civil Engineer
Short Elliott Hendrickson, Inc.
501 Maple Avenue
Delafield, Wisconsin 53018
262.646.6855

Structural Engineer
XXX
Contact: Patrick Reynolds
STREET
Milwaukee, Wisconsin 53XXX
414.XXX.XXXX

Interiors
Charter House Holdings, LLC
200 North Franklin
Zealand, Michigan 49464
616.399.6000

Signs
Persona - Sign Up Company
700 21st Street Southwest
PO Box 210
Watertown, South Dakota 57201
800.843.9888

General Contractor
Contact: Mike Miksich
Brion Building Corporation
3885 N. Brookfield Road, Suite 200
Brookfield, Wisconsin 53045
262.790.0500

Carsch, Inc.
Arby's - Waukesha
2330 E. MORELAND BLVD
WAUKESHA, WISCONSIN 53186

This drawing is an instrument of service and shall remain the property of SEH, Inc. The drawing and the concepts and ideas contained herein shall not be used, reproduced, revised, or retained without the express written approval of SEH, Inc.
Submission or distribution of this drawing to meet official or regulatory requirements or for other purposes in connection with the project is not to be construed as publication in derogation of any of the rights of SEH, Inc.

SEH Project 145888
Checked By BC
Drawn By MRC

Project Status Issue Date

Revision Issue
Rev. # Description Date

EXTERIOR ELEVATIONS

A1.1

Owner
Carsch, Inc.
681 East Lake Street, Suite 262
Wayzata, Minnesota 55391
952.475.4953

Architect
Brian Cooley, AIA
Short Elliott Hendrickson, Inc.
159 North Jackson Street, Suite 106
Milwaukee, Wisconsin 53202-6169
414.465.1200

Landscape Architect
Short Elliott Hendrickson, Inc.
6808 Odana Road, Suite 2000
Madison, Wisconsin 53719-1137
608.620.6199

Civil Engineer
Short Elliott Hendrickson, Inc.
501 Maple Avenue
Delafield, Wisconsin 53018
262.646.6855

Structural Engineer
XXX
Contact: Patrick Reynolds
STREET
Milwaukee, Wisconsin 53XXX
414.XXX.XXXX

Interior
Charter House Holdings, LLC
200 North Franklin
Zealand, Michigan 49464
616.399.6000

Signs
Persona - Sign Up Company
700 21st Street Southwest
PO Box 210
Watertown, South Dakota 57201
800.843.9888

General Contractor
Brion Building Corporation
3885 N. Brookfield Road, Suite 200
Brookfield, Wisconsin 53045
262.790.0500

DEMOLITION KEYED NOTES (X)

- REMOVE EXISTING EXTERIOR LIGHTING.
- REMOVE EXISTING AWNINGS.
- REMOVE INTERIOR FINISHES, FIXTURES AND EQUIPMENT IN DINING ROOM.
- REMOVE PLUMBING FIXTURES AND ACCESSORIES IN RESTROOMS.
- REMOVE COUNTERTOP. MODIFY KNEEWALL AS REQUIRED.
- TRENCH FLOOR AS REQUIRED TO RELOCATED SODA DISPENSER IN DINING ROOM AND DRIVE THRU.
- DISCONNECT PLUMBING AND ELECTRICAL CONNECTIONS PRIOR TO REMOVAL. TRENCH FLOOR AS REQUIRED TO EXTEND ELECTRICAL FEED TO SUB-PANEL IN NEW PRODUCTION COUNTER.
- REUSE EXISTING WINDOW FRAMES. PREPARE FOR NEW FINISH AND GLAZING. VERIFY WITH OWNER.
- VERIFY SCOPE OF WORK IN KITCHEN AND BACK OF HOUSE WITH OWNER. RELOCATE UTILITIES AS REQUIRED FOR NEW LAYOUT. CAP ALL ABANDONED UTILITIES.
- DRIVE THRU WINDOW TO BE REPLACE WINDOW. VERIFY SIZE AND INSTALL REQUIREMENTS OF NEW WINDOW UNIT.
- NOT USED.
- REMOVE BEVERAGE AND CONDIMENT COUNTER. CAP ALL ABANDONED UTILITIES.
- REMOVE EXISTING DOOR, FRAME AND CASING. REPLACE WITH STYLE AND TYPE SPECIFIED IN DECOR DRAWINGS AND COMPLIANT WITH APPLICABLE CODES. REUSE EXISTING VESTIBULE DOORS. PREPARE FOR NEW FINISH.
- REUSE REAR DOOR. PREPARE FOR NEW FINISH.
- REMOVE EXISTING EIFS AND TRIM. PREPARE WALL STRUCTURE TO RECEIVE NEW FINISH.
- REMOVE LOW WALL.
- REMOVE FLOOR FINISHES. PREPARE TO RECEIVE NEW FINISHES AS SCHEDULED.
- REMOVE WALL FINISHES. PREPARE WALL FOR NEW FINISHES AS SCHEDULED.

DEMOLITION KEYED NOTES

1/4" = 1'-0"

FINISH SCHEDULE

MARK	MANUFACTURER	DESCRIPTION	NOTES
A1	DRYVIT	EIFS WALL SYSTEM	COLOR: ARBY081030 TEXTURE: STANDARD
A2	NOT USED	--	--
B	NOT USED	--	--
C1	DRYVIT	EIFS WALL SYSTEM	COLOR: ARBY081030 TEXTURE: STANDARD
C2	DRYVIT	EIFS WALL SYSTEM WITH V-GROOVE REVEAL AT 4" O.C.	COLOR: ARBY081030 TEXTURE: STANDARD
C3	DRYVIT	EIFS WALL SYSTEM WITH V-GROOVE REVEAL AT 8" O.C.	COLOR: ARBY081030 TEXTURE: STANDARD
D	SHERWIN WILLIAMS	SW #6869 STOP	SATIN FINISH
E	NOT USED	--	--
F	SHERWIN WILLIAMS	SW #7024 FUNCTIONAL GRAY	SATIN FINISH
G	SHERWIN WILLIAMS	SW #2808 ROCKWOOD DARK BROWN	SATIN FINISH
H	COUNTY MATERIALS	BRICK - HERITAGE COLLECTION	WHITE
J	COUNTY MATERIALS	BRICK - HERITAGE COLLECTION	SABLE
K	SHERWIN WILLIAMS	SW #7005 PURE WHITE	SATIN FINISH

METALS

A	EXCEPTIONAL METALS/DURO-LAST	TWO-PIECE SNAP-ON METAL COPING/REGAL WHITE / DURO-LAST #SR70TE87	FOR USE WITH DURO-LAST ROOFING SYSTEM DETAIL FA3110
B	EXCEPTIONAL METALS/DURO-LAST	TWO-PIECE SNAP-ON METAL COPING DARK BRONZE / DURO-LAST #SR26TE84	FOR USE WITH DURO-LAST ROOFING SYSTEM DETAIL FA3110
C	PRE-FABRICATED CANOPY/BAND	PRODUCT CODE: 9940-30198R PRODUCT NAME: FC SD RAL 3000 FLAME RED	
D	PRE-FABRICATED POST	PRODUCT CODE: 9840-80957R PRODUCT NAME: FC SD RAL 8017 CHOC. BROWN	

NOTES:

- PAINT ALL EXPOSED METERS, SERVICE ENTRANCES, GAS PIPE, ROOF ACCESS LADDER, ETC. TO MATCH ADJACENT EXTERIOR WALL SURFACE
- MAKE SURE THAT WALL WEEPS AND FLASHING ARE INSTALLED CORRECTLY. DO NOT BLOCK WEEPS.
- ALUMINUM STOREFRONT TO BE DARK BRONZE. REFER TO SUCCESSOR LICENSING SCOPE OF WORK.
- ALL EXTERIOR GLAZING TO BE 1" INSULATED GLAZING
- BASIS OF DESIGN FOR THE EIFS WALL SYSTEM IS DRYVIT OUTSULATION PLUS MD. EIFS WALL SYSTEM IS 2" THICK UNLESS NOTED OTHERWISE. INSTALL EIFS PRODUCT IN STRICT ACCORDANCE WITH MANUFACTURER SPECIFICATIONS AND DETAILS
- SIGNAGE IS SHOWN FOR REFERENCE ONLY. FINAL SIZE, LOCATION AND QUANTITY TO BE DETERMINED BY SIGNAGE VENDOR. SIGNAGE VENDOR SHALL PERMIT ALL SIGNS UNDER SEPARATE COVER.

FINISH SCHEDULE

1/4" = 1'-0"

DESIGN NOTES (X)

THE FOLLOWING ARE THE PROTOTYPICAL SCOPE OF WORK NOTES FOR THE REMODELING OF YOUR STORE INTO THE REQUIRED INSPIRE IMAGE.

FRANCHISEES ARE TO REFER TO THE SECTION SCOPE OF WORK PREPARED BY THEIR OPERATIONS CONSULTANT FOR THE SCOPE OF WORK "SPECIFIC" TO THEIR STORE.

- INSTALL CANOPY/ACCENT BAND AT 8'-0" A.F.F.
- CENTER DRIVE THRU CANOPY ON DRIVE THRU WINDOW.
- INSTALL RED EIFS ACCENT BAND AT 8'-0" A.F.F.
- INSTALL ARBY'S HAT SIGN ON ACCENT BAND, CENTER.
- INSTALL ARBY'S LETTERSET IN WHITE CENTERED ON CANOPY.
- INSTALL BRICK PATTERNED EIFS:
 - ON FRONT OF BUILDING, ALIGN WITH JAMB OF MIDDLE WINDOW BELOW,
 - EXTEND TO BOTTOM OF WALL, ON BOTH SIDES OF FIRST WINDOW,
 - WRAP CORNER OF BUILDING AND EXTEND TO FIRST WINDOW ON MAIN ENTRANCE SIDE OF BUILDING.
 - USE WHITE METAL COPING AT TOP OF WALL.
- INSTALL BROWN EIFS WITH 4" O.C. V-GROOVES:
 - ON FRONT OF BUILDING FROM EDGE OF BRICK PATTERNED EIFS TO THE CORNER OF THE BUILDING.
 - ON SIDE OF BUILDING FROM THE CORNER TO THE DRIVE THRU BUMP-OUT,
 - ABOVE THE ACCENT BAND ONLY.
 - USE BROWN METAL COPING AT TOP OF WALL.
- INSTALL BROWN EIFS WITH 8" O.C. V-GROOVES AT THE DRIVE THRU BUMP-OUT. USE BROWN METAL COPING AT TOP OF WALL.
- PATCH AND REPAIR EXISTING EIFS AND PAINT WHITE. REPLACE EIFS AS REQUIRED.
- INSTALL WALL MOUNTED UPLIGHT FIXTURE
 - AT 12'-0" O.C., AT 11'-6" AFF.
 - AT 11'-6" AFF.
 - AT 11'-6" AFF.
- INSTALL NEW DRIVE THRU WINDOW. VERIFY STYLE WITH OWNER.

DESIGN NOTES

1/4" = 1'-0"



1 EXISTING - SOUTH ELEVATION
1/4" = 1'-0"

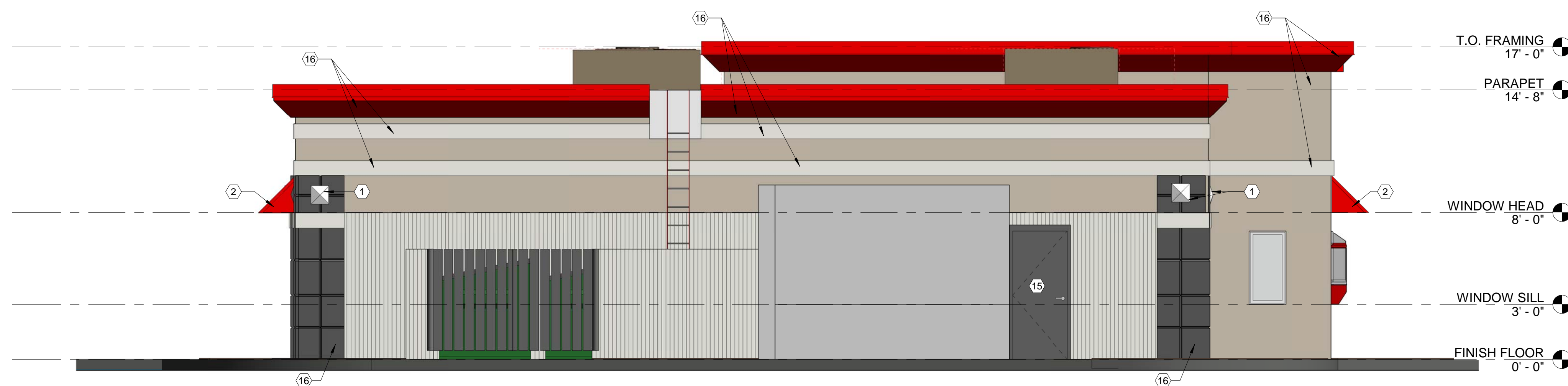


2 PROPOSED - SOUTH ELEVATION
1/4" = 1'-0"

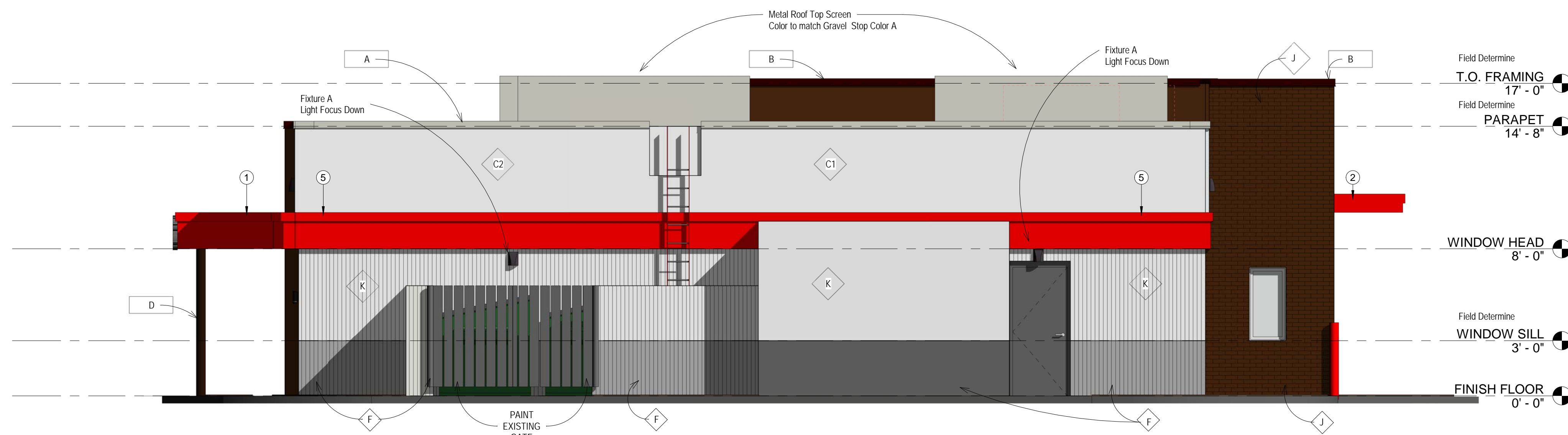
DEMOLITION KEYED NOTES (X)

- REMOVE EXISTING EXTERIOR LIGHTING.
- REMOVE EXISTING AWNINGS.
- REMOVE INTERIOR FINISHES, FIXTURES AND EQUIPMENT IN DINING ROOM.
- REMOVE PLUMBING FIXTURES AND ACCESSORIES IN RESTROOMS.
- REMOVE COUNTERTOP. MODIFY KNEEWALL AS REQUIRED.
- TRENCH FLOOR AS REQUIRED TO RELOCATED SODA DISPENSER IN DINING ROOM AND DRIVE THRU.
- DISCONNECT PLUMBING AND ELECTRICAL CONNECTIONS PRIOR TO REMOVAL. TRENCH FLOOR AS REQUIRED TO EXTEND ELECTRICAL FEED TO SUB-PANEL IN NEW PRODUCTION COUNTER.
- REUSE EXISTING WINDOW FRAMES. PREPARE FOR NEW FINISH AND GLAZING. VERIFY WITH OWNER.
- VERIFY SCOPE OF WORK IN KITCHEN AND BACK OF HOUSE WITH OWNER. RELOCATE UTILITIES AS REQUIRED FOR NEW LAYOUT. CAP ALL ABANDONED UTILITIES.
- DRIVE THRU WINDOW TO BE REPLACE WINDOW. VERIFY SIZE AND INSTALL REQUIREMENTS OF NEW WINDOW UNIT.
- NOT USED.
- REMOVE BEVERAGE AND CONDIMENT COUNTER. CAP ALL ABANDONED UTILITIES.
- REMOVE EXISTING DOOR, FRAME AND CASING. REPLACE WITH STYLE AND TYPE SPECIFIED IN DECOR DRAWINGS AND COMPLIANT WITH APPLICABLE CODES.
- REUSE EXISTING VESTIBULE DOORS. PREPARE FOR NEW FINISH.
- REUSE REAR DOOR. PREPARE FOR NEW FINISH.
- REMOVE EXISTING EIFS AND TRIM. PREPARE WALL STRUCTURE TO RECEIVE NEW FINISH.
- REMOVE LOW WALL.
- REMOVE FLOOR FINISHES. PREPARE TO RECEIVE NEW FINISHES AS SCHEDULED.
- REMOVE WALL FINISHES. PREPARE WALL FOR NEW FINISHES AS SCHEDULED.

DEMOLITION KEYED NOTES 1/4" = 1'-0"



1 EXISTING - WEST ELEVATION
1/4" = 1'-0"



2 PROPOSED - WEST ELEVATION
1/4" = 1'-0"

FINISH SCHEDULE

MARK	MANUFACTURER	DESCRIPTION	NOTES
A1	DRYVIT	EFIS WALL SYSTEM	COLOR: ARBY081030 TEXTURE: STANDARD
A2	NOT USED	--	--
B	NOT USED	--	--
C1	DRYVIT	EFIS WALL SYSTEM	COLOR: ARBY081030 TEXTURE: STANDARD
C2	DRYVIT	EFIS WALL SYSTEM WITH V-GROOVE REVEAL AT 4' O.C.	COLOR: ARBY081030 TEXTURE: STANDARD
C3	DRYVIT	EFIS WALL SYSTEM WITH V-GROOVE REVEAL AT 8' O.C.	COLOR: ARBY081030 TEXTURE: STANDARD
D	SHERWIN WILLIAMS	SW #6869 STOP	SATIN FINISH
E	NOT USED	--	--
F	SHERWIN WILLIAMS	SW #7024 FUNCTIONAL GRAY	SATIN FINISH
G	SHERWIN WILLIAMS	SW #2808 ROCKWOOD DARK BROWN	SATIN FINISH
H	COUNTY MATERIALS	BRICK - HERITAGE COLLECTION	WHITE
J	COUNTY MATERIALS	BRICK - HERITAGE COLLECTION	SABLE
K	SHERWIN WILLIAMS	SW #7005 PURE WHITE	SATIN FINISH

METALS			
A	EXCEPTIONAL METALS/DURO-LAST	TWO-PIECE SNAP-ON METAL COPINGREGAL WHITE / DURO-LAST #SR70TE87	FOR USE WITH DURO-LAST ROOFING SYSTEM DETAIL FA3110
B	EXCEPTIONAL METALS/DURO-LAST	TWO-PIECE SNAP-ON METAL COPING DARK BRONZE / DURO-LAST #SR26TE84	FOR USE WITH DURO-LAST ROOFING SYSTEM DETAIL FA3110
C	PRE-FABRICATED CANOPY/BAND	PRODUCT CODE: 9940-30198R PRODUCT NAME: FC SD RAL 3000 FLAME RED	
D	PRE-FABRICATED POST	PRODUCT CODE: 9840-80957R PRODUCT NAME: FC SD RAL 8017 CHOC. BROWN	

- NOTES:
- PAINT ALL EXPOSED METERS, SERVICE ENTRANCES, GAS PIPE, ROOF ACCESS LADDER, ETC. TO MATCH ADJACENT EXTERIOR WALL SURFACE.
 - MAKE SURE THAT WALL WEEPS AND FLASHING ARE INSTALLED CORRECTLY. DO NOT BLOCK WEEPS.
 - ALUMINUM STOREFRONT TO BE DARK BRONZE. REFER TO SUCCESSOR LICENSING SCOPE OF WORK.
 - ALL EXTERIOR GLAZING TO BE 1" INSULATED GLAZING.
 - BASIS OF DESIGN FOR THE EFIS WALL SYSTEM IS DRYVIT OUTSULATION PLUS MD. EFIS WALL SYSTEM IS 2" THICK UNLESS NOTED OTHERWISE. INSTALL EFIS PRODUCT IN STRICT ACCORDANCE WITH MANUFACTURER SPECIFICATIONS AND DETAILS.
 - SIGNAGE IS SHOWN FOR REFERENCE ONLY. FINAL SIZE, LOCATION AND QUANTITY TO BE DETERMINED BY SIGNAGE VENDOR. SIGNAGE VENDOR SHALL PERMIT ALL SIGNS UNDER SEPARATE COVER.

FINISH SCHEDULE 1/4" = 1'-0"

DESIGN NOTES (X)

THE FOLLOWING ARE THE PROTOTYPICAL SCOPE OF WORK NOTES FOR THE REMODELING OF YOUR STORE INTO THE REQUIRED INSPIRE IMAGE. FRANCHISES ARE TO REFER TO THE SECTION SCOPE OF WORK PREPARED BY THEIR OPERATIONS CONSULTANT FOR THE SCOPE OF WORK * SPECIFIC* TO THEIR STORE.

- INSTALL CANOPY/ACCENT BAND AT 8'-0" A.F.F.
- CENTER DRIVE THRU CANOPY ON DRIVE THRU WINDOW.
- INSTALL RED EIFS ACCENT BAND AT 8'-0" A.F.F.
- INSTALL ARBY'S HAT SIGN ON ACCENT BAND, CENTER.
- INSTALL ARBY'S LETTERSET IN WHITE CENTERED ON CANOPY.
- INSTALL BRICK PATTERNED EIFS:
 - ON FRONT OF BUILDING, ALIGN WITH JAMB OF MIDDLE WINDOW BELOW, EXTEND TO BOTTOM OF WALL, ON BOTH SIDES OF FIRST WINDOW.
 - WRAP CORNER OF BUILDING AND EXTEND TO FIRST WINDOW ON MAIN ENTRANCE SIDE OF BUILDING.
 - USE WHITE METAL COPING AT TOP OF WALL.
- INSTALL BROWN EIFS WITH 4' O.C. V-GROOVES:
 - ON FRONT OF BUILDING FROM EDGE OF BRICK PATTERNED EIFS TO THE CORNER OF THE BUILDING.
 - ON SIDE OF BUILDING FROM THE CORNER TO THE DRIVE THRU BUMP-OUT, ABOVE THE ACCENT BAND ONLY.
 - USE BROWN METAL COPING AT TOP OF WALL.
- INSTALL BROWN EIFS WITH 8' O.C. V-GROOVES AT THE DRIVE THRU BUMP-OUT. USE BROWN METAL COPING AT TOP OF WALL.
- PATCH AND REPAIR EXISTING EIFS AND PAINT WHITE. REPLACE EIFS AS REQUIRED.
- INSTALL WALL MOUNTED UPLIGHT FIXTURE
 - AT 12'-0" O.C., AT 11'-6" AFF.
 - AT 11'-6" AFF.
 - AT 1'-6" AFF.
- INSTALL NEW DRIVE THRU WINDOW. VERIFY STYLE WITH OWNER.

DESIGN NOTES 1/4" = 1'-0"

Owner
Carsch, Inc.
681 East Lake Street, Suite 262
Wayzata, Minnesota 55391
952.475.4953

Architect
Brian Cooley, AIA
Short Elliott Hendrickson, Inc.
159 North Jackson Street, Suite 106
Milwaukee, Wisconsin 53202-6169
414.465.1200

Landscape Architect
Short Elliott Hendrickson, Inc.
6808 Odana Road, Suite 2000
Madison, Wisconsin 53719-1137
608.620.6199

Civil Engineer
Short Elliott Hendrickson, Inc.
501 Maple Avenue
Delafield, Wisconsin 53018
262.646.6855

Structural Engineer
XXX
Contact: Patrick Reynolds
STREET
Milwaukee, Wisconsin 53XXX
414.XXX.XXXX

Interior
Charter House Holdings, LLC
200 North Franklin
Zealand, Michigan 49464
616.399.6000

Signage
Persona - Sign Up Company
700 21st Street Southwest
PO Box 210
Watertown, South Dakota 57201
800.843.9888

General Contractor
Contact: Mike Miksich
Brion Building Corporation
3885 N. Brookfield Road, Suite 200
Brookfield, Wisconsin 53045
262.790.0500

Carsch Inc.
Arby's - Waukesha
 2330 E. MORELAND BLVD
 WAUKESHA, WISCONSIN 53186

This drawing is an instrument of service and shall remain the property of SEH, Inc. This drawing and the concepts and ideas contained herein shall not be used, reproduced, revised, or retained without the express written approval of SEH, Inc.

Submission or distribution of this drawing to meet official or regulatory requirements or for other purposes in connection with the project is not to be construed as publication in derogation of any of the rights of SEH, Inc.

COPYRIGHT © 2017

SEH Project 145888
Checked By BC
Drawn By MRC

Project Status Issue Date

Revision Issue		
Rev #	Description	Date

EXTERIOR ELEVATIONS



Building a Better World for All of Us®

Owner
Carsch, Inc.
681 East Lake Street, Suite 262
Wayzata, Minnesota 55391
952.475.4953

Architect
Brian Cooley, AIA
Short Elliott Hendrickson, Inc.
159 North Jackson Street, Suite 106
Milwaukee, Wisconsin 53202-6169
414.465.1200

Landscape Architect
Short Elliott Hendrickson, Inc.
6808 Odana Road, Suite 2000
Madison, Wisconsin 53719-1137
608.620.6199

Civil Engineer
Short Elliott Hendrickson, Inc.
501 Maple Avenue
Delafield, Wisconsin 53018
262.646.6855

Structural Engineer
XXX
Contact: Patrick Reynolds
STREET
Milwaukee, Wisconsin 53XXX
414.XXX.XXXX

Interior
Charter House Holdings, LLC
200 North Franklin
Zeeland, Michigan 49464
616.399.6000

Signs
Persona - Sign Up Company
700 21st Street Southwest
PO Box 210
Watertown, South Dakota 57201
800.843.9888

General Contractor
Contact: Mike Miksch
Brion Building Corporation
3885 N. Brookfield Road, Suite 200
Brookfield, Wisconsin 53045
262.790.0500

DEMOLITION KEYED NOTES (X)

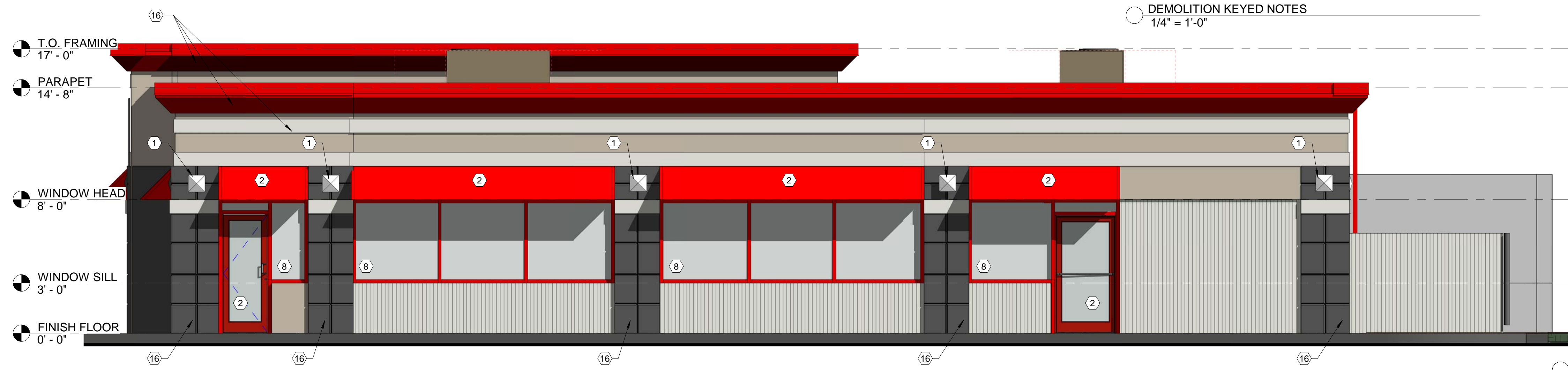
- REMOVE EXISTING EXTERIOR LIGHTING.
- REMOVE EXISTING AWNINGS.
- REMOVE INTERIOR FINISHES, FIXTURES AND EQUIPMENT IN DINING ROOM.
- REMOVE PLUMBING FIXTURES AND ACCESSORIES IN RESTROOMS.
- REMOVE COUNTERTOP, MODIFY KNEEWALL AS REQUIRED.
- TRENCH FLOOR AS REQUIRED TO RELOCATED SODA DISPENSER IN DINING ROOM AND DRIVE THRU.
- DISCONNECT PLUMBING AND ELECTRICAL CONNECTIONS PRIOR TO REMOVAL. TRENCH FLOOR AS REQUIRED TO EXTEND ELECTRICAL FEED TO SUB-PANEL IN NEW PRODUCTION COUNTER.
- REUSE EXISTING WINDOW FRAMES. PREPARE FOR NEW FINISH AND GLAZING. VERIFY WITH OWNER.
- VERIFY SCOPE OF WORK IN KITCHEN AND BACK OF HOUSE WITH OWNER. RELOCATE UTILITIES AS REQUIRED FOR NEW LAYOUT. CAP ALL ABANDONED UTILITIES.
- DRIVE THRU WINDOW TO BE REPLACE WINDOW. VERIFY SIZE AND INSTALL REQUIREMENTS OF NEW WINDOW UNIT.
- NOT USED.
- REMOVE BEVERAGE AND CONDIMENT COUNTER. CAP ALL ABANDONED UTILITIES.
- REMOVE EXISTING DOOR, FRAME AND CASING. REPLACE WITH STYLE AND TYPE SPECIFIED IN DECOR DRAWINGS AND COMPLIANT WITH APPLICABLE CODES.
- REUSE EXISTING VESTIBULE DOORS. PREPARE FOR NEW FINISH.
- REUSE REAR DOOR. PREPARE FOR NEW FINISH.
- REMOVE EXISTING EIFS AND TRIM. PREPARE WALL STRUCTURE TO RECEIVE NEW FINISH.
- REMOVE LOW WALL.
- REMOVE FLOOR FINISHES. PREPARE TO RECEIVE NEW FINISHES AS SCHEDULED.
- REMOVE WALL FINISHES. PREPARE WALL FOR NEW FINISHES AS SCHEDULED.

FINISH SCHEDULE

MARK	MANUFACTURER	DESCRIPTION	NOTES
A1	DRYVIT	EIFS WALL SYSTEM	COLOR: ARBY081030 TEXTURE: STANDARD
A2	NOT USED	--	--
B	NOT USED	--	--
C1	DRYVIT	EIFS WALL SYSTEM	COLOR: ARBY081030 TEXTURE: STANDARD
C2	DRYVIT	EIFS WALL SYSTEM WITH V-GROOVE REVEAL AT 4" O.C.	COLOR: ARBY081030 TEXTURE: STANDARD
C3	DRYVIT	EIFS WALL SYSTEM WITH V-GROOVE REVEAL AT 8" O.C.	COLOR: ARBY081030 TEXTURE: STANDARD
D	SHERWIN WILLIAMS	SW #6869 STOP	SATIN FINISH
E	NOT USED	--	--
F	SHERWIN WILLIAMS	SW #7024 FUNCTIONAL GRAY	SATIN FINISH
G	SHERWIN WILLIAMS	SW #2808 ROCKWOOD DARK BROWN	SATIN FINISH
H	COUNTY MATERIALS	BRICK - HERITAGE COLLECTION	WHITE
J	COUNTY MATERIALS	BRICK - HERITAGE COLLECTION	SABLE
K	SHERWIN WILLIAMS	SW #7005 PURE WHITE	SATIN FINISH

METALS			
A	EXCEPTIONAL METALS/DURO-LAST	TWO-PIECE SNAP-ON METAL COPINGREGAL WHITE / DURO-LAST #SR70TE87	FOR USE WITH DURO-LAST ROOFING SYSTEM DETAIL FA3110
B	EXCEPTIONAL METALS/DURO-LAST	TWO-PIECE SNAP-ON METAL COPING DARK BRONZE / DURO-LAST #SR26TE84	FOR USE WITH DURO-LAST ROOFING SYSTEM DETAIL FA3110
C	PRE-FABRICATED CANOPY/BAND	PRODUCT CODE: 9940-30198R PRODUCT NAME: FC SD RAL 3000 FLAME RED	
D	PRE-FABRICATED POST	PRODUCT CODE: 9840-80957R PRODUCT NAME: FC SD RAL 8017 CHOC. BROWN	

- NOTES:**
- PAINT ALL EXPOSED METERS, SERVICE ENTRANCES, GAS PIPE, ROOF ACCESS LADDER, ETC. TO MATCH ADJACENT EXTERIOR WALL SURFACE.
 - MAKE SURE THAT WALL WEEPS AND FLASHING ARE INSTALLED CORRECTLY. DO NOT BLOCK WEEPS.
 - ALUMINUM STOREFRONT TO BE DARK BRONZE. REFER TO SUCCESSOR LICENSING SCOPE OF WORK.
 - ALL EXTERIOR GLAZING TO BE 1" INSULATED GLAZING.
 - BASIS OF DESIGN FOR THE EIFS WALL SYSTEM IS DRYVIT OUTSULATION PLUS MD. EIFS WALL SYSTEM IS 2" THICK UNLESS NOTED OTHERWISE. INSTALL EIFS PRODUCT IN STRICT ACCORDANCE WITH MANUFACTURER SPECIFICATIONS AND DETAILS.
 - SIGNAGE IS SHOWN FOR REFERENCE ONLY. FINAL SIZE, LOCATION AND QUANTITY TO BE DETERMINED BY SIGNAGE VENDOR. SIGNAGE VENDOR SHALL PERMIT ALL SIGNS UNDER SEPARATE COVER.



1 EXISTING - NORTH ELEVATION
1/4" = 1'-0"

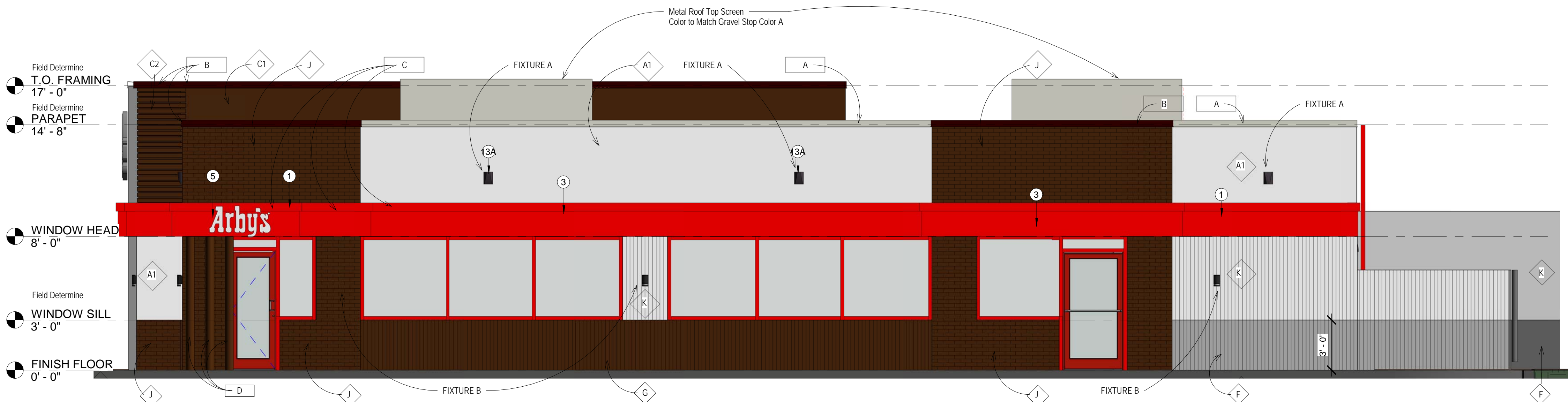
FINISH SCHEDULE
1/4" = 1'-0"

DESIGN NOTES (X)

THE FOLLOWING ARE THE PROTOTYPICAL SCOPE OF WORK NOTES FOR THE REMODELING OF YOUR STORE INTO THE REQUIRED INSPIRE IMAGE.

FRANCHISES ARE TO REFER TO THE SECTION SCOPE OF WORK PREPARED BY THEIR OPERATIONS CONSULTANT FOR THE SCOPE OF WORK 'SPECIFIC' TO THEIR STORE.

- INSTALL CANOPY/ACCENT BAND AT 8'-0" A.F.F.
- CENTER DRIVE THRU CANOPY ON DRIVE THRU WINDOW.
- INSTALL RED EIFS ACCENT BAND AT 8'-0" A.F.F.
- INSTALL ARBY'S HAT SIGN ON ACCENT BAND, CENTER.
- INSTALL ARBY'S LETTERSET IN WHITE CENTERED ON CANOPY.
- INSTALL BRICK PATTERNED EIFS:
 - ON FRONT OF BUILDING, ALIGN WITH JAMB OF MIDDLE WINDOW BELOW,
 - EXTEND TO BOTTOM OF WALL, ON BOTH SIDES OF FIRST WINDOW,
 - WRAP CORNER OF BUILDING AND EXTEND TO FIRST WINDOW ON MAIN ENTRANCE SIDE OF BUILDING.
 - USE WHITE METAL COPING AT TOP OF WALL.
- INSTALL BROWN EIFS WITH 4" O.C. V-GROOVES:
 - ON FRONT OF BUILDING FROM EDGE OF BRICK PATTERNED EIFS TO THE CORNER OF THE BUILDING,
 - ON SIDE OF BUILDING FROM THE CORNER TO THE DRIVE THRU BUMP-OUT,
 - ABOVE THE ACCENT BAND ONLY,
 - USE BROWN METAL COPING AT TOP OF WALL.
- INSTALL BROWN EIFS WITH 8" O.C. V-GROOVES AT THE DRIVE THRU BUMP-OUT. USE BROWN METAL COPING AT TOP OF WALL.
- PATCH AND REPAIR EXISTING EIFS AND PAINT WHITE. REPLACE EIFS AS REQUIRED.
- INSTALL WALL MOUNTED UPLIGHT FIXTURE
 - AT 12'-0" O.C., AT 11'-6" AFF.
 - AT 11'-6" AFF.
 - AT 1'-6" AFF.
- INSTALL NEW DRIVE THRU WINDOW. VERIFY STYLE WITH OWNER.



2 PROPOSED - NORTH ELEVATION
1/4" = 1'-0"

DESIGN NOTES
1/4" = 1'-0"

Arby's - Waukesha
2330 E. MORELAND BLVD
WAUKESHA, WISCONSIN 53186

This drawing is an instrument of service and shall remain the property of SEH, Inc. The drawing and the concepts and ideas contained herein shall not be used, reproduced, revised, or retained without the express written approval of SEH, Inc.

Submission or distribution of this drawing to meet official or regulatory requirements or for other purposes in connection with the project is not to be construed as publication in derogation of any of the rights of SEH, Inc.

SEH Project 145888
Checked By BC
Drawn By MRC

Project Status Issue Date

Revision Issue	Rev. #	Description	Date

EXTERIOR ELEVATIONS

A1.4