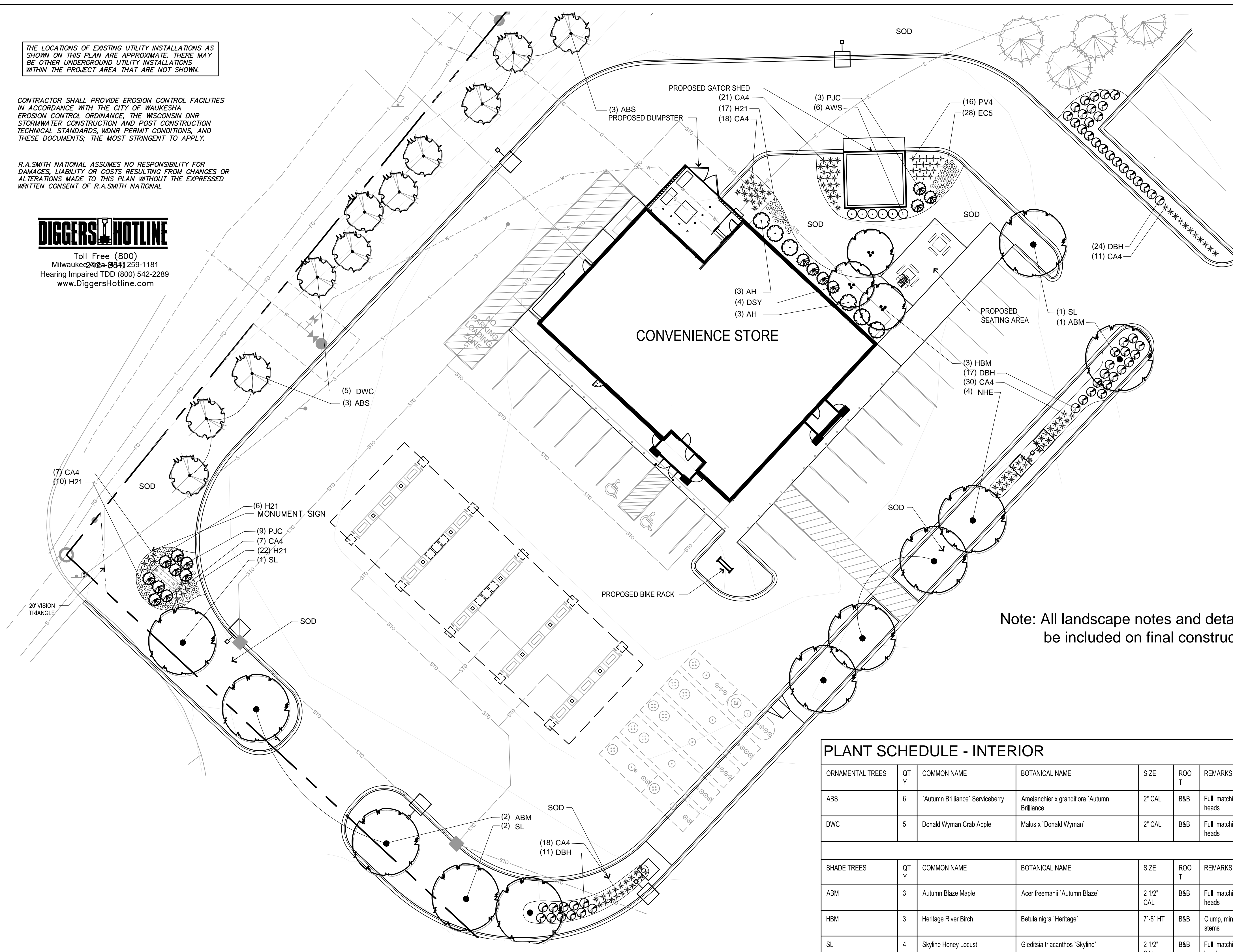


R.A.SMITH NATIONAL ASSUMES NO RESPONSIBILITY FOR DAMAGES, LIABILITY OR COSTS RESULTING FROM CHANGES OR ALTERATIONS MADE TO THIS PLAN WITHOUT THE EXPRESSED WRITTEN CONSENT OF R.A.SMITH NATIONAL



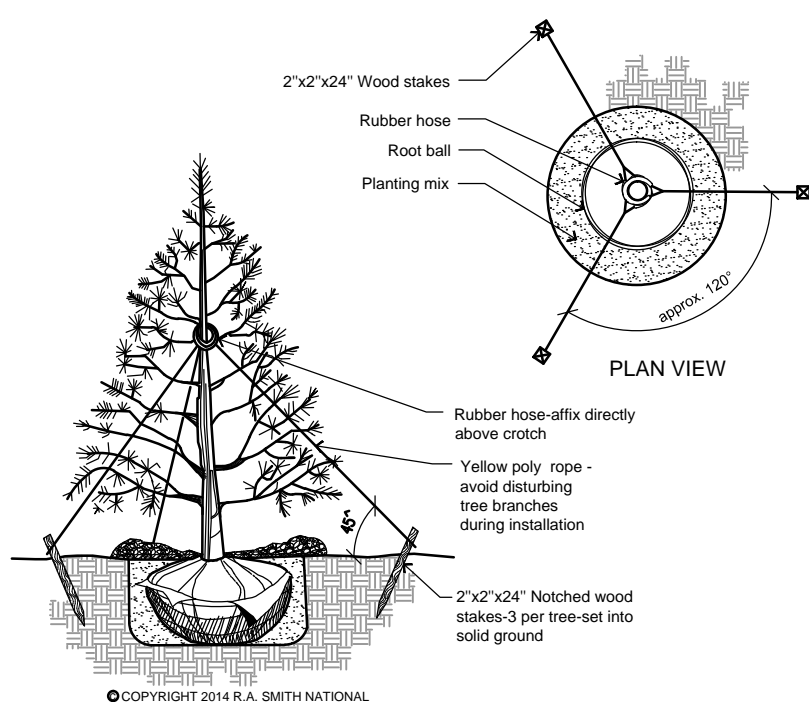
Toll Free (800)
Milwaukee 242-8541 259-1181
Hearing Impaired TDD (800) 542-2289
www.DiggersHotline.com



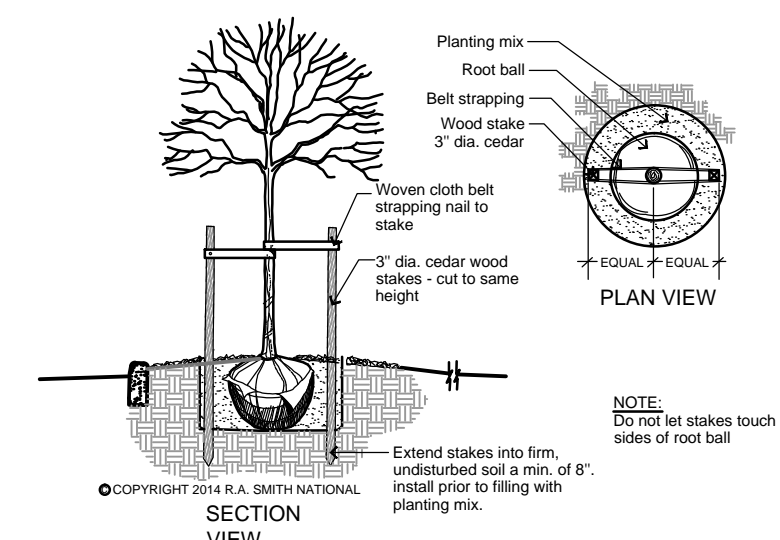
Note: All landscape notes and details to be included on final construction plans.

PLANT SCHEDULE - INTERIOR

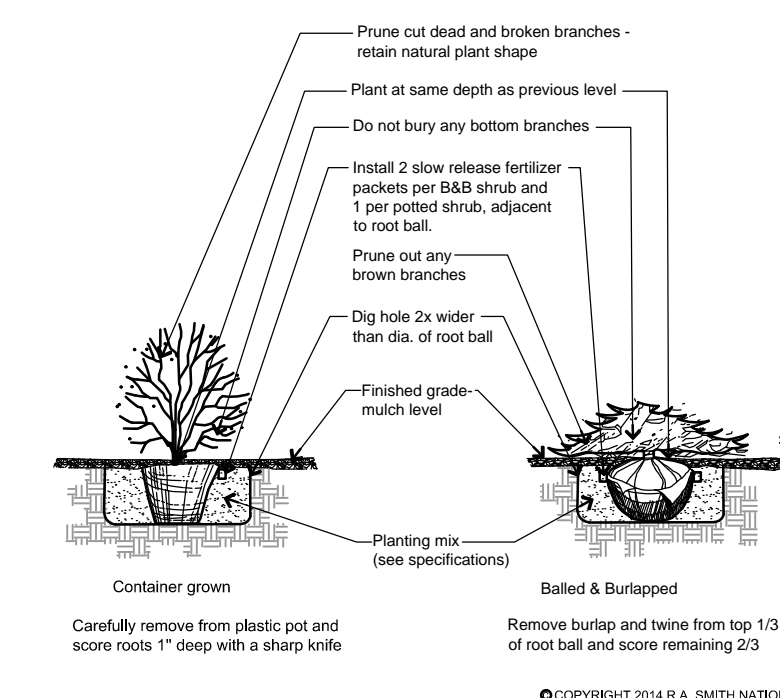
| ORNAMENTAL TREES | QTY | COMMON NAME | BOTANICAL NAME | SIZE | ROOT | REMARKS | |
|------------------|-----|----------------------------------|--|------------|--------|----------------------|--|
| ABS | 6 | 'Autumn Brilliance' Serviceberry | <i>Amelanchier x grandiflora</i> 'Autumn Brilliance' | 2" CAL | B&B | Full, matching heads | |
| DWC | 5 | Donald Wyman Crab Apple | <i>Malus x</i> 'Donald Wyman' | 2" CAL | B&B | Full, matching heads | |
| | | | | | | | |
| SHADE TREES | QTY | COMMON NAME | BOTANICAL NAME | SIZE | ROOT | REMARKS | |
| ABM | 3 | Autumn Blaze Maple | <i>Acer freemanii</i> 'Autumn Blaze' | 2 1/2" CAL | B&B | Full, matching heads | |
| HBM | 3 | Heritage River Birch | <i>Betula nigra</i> 'Heritage' | 7'-8' HT | B&B | Clump, min. 3 stems | |
| SL | 4 | Skyline Honey Locust | <i>Gleditsia triacanthos</i> 'Skyline' | 2 1/2" CAL | B&B | Full, matching heads | |
| NHE | 4 | New Horizon Elm | <i>Ulmus x</i> 'New Horizon' | 2 1/2" CAL | B&B | Full, matching heads | |
| | | | | | | | |
| DECIDUOUS SHRUBS | QTY | COMMON NAME | BOTANICAL NAME | SIZE | ROOT | REMARKS | |
| DBH | 52 | Dwarf Bush Honeysuckle | <i>Diervilla lonicera</i> | 15" HT | CON T. | | |
| AH | 6 | Annabelle Smooth Hydrangea | <i>Hydrangea arborescens</i> 'Annabelle' | 24" HT | CON T. | | |
| AWS | 6 | Anthony Waterer Spiraea | <i>Spiraea x bumalda</i> 'Anthony Waterer' | 15" HT | CON T. | | |
| | | | | | | | |
| EVERGREEN SHRUBS | QTY | COMMON NAME | BOTANICAL NAME | SIZE | ROOT | REMARKS | |



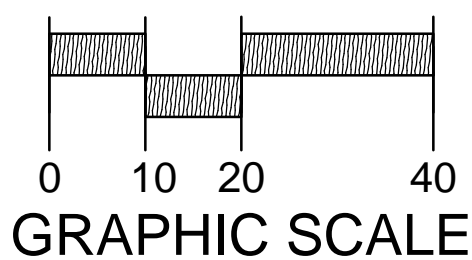
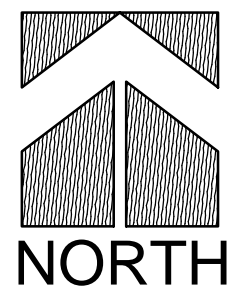
1 EVERGREEN STAKING DETAIL
NOT TO SCALE
9-21-2005-1708-01



2 DECIDUOUS TREE STAKING FOR RESTRICTED AREAS
NOT TO SCALE



3 SHRUB PLANTING DETAIL
NOT TO SCALE



KWIK TRIP

STORES

The Kwik Star logo, featuring the words "Kwik" and "Star" in a bold, italicized, sans-serif font. The "K" and "S" are particularly large and stylized, with motion lines trailing behind them. A five-pointed star is integrated into the letter "a" in "Star".

STORES

KWIK TRIP, Inc.
P.O. BOX 2107
1626 OAK STREET
LACROSSE, WI 54602-2107
PH. (608) 781-8988
FAX (608) 781-8960

R.A. Smith National
*Beyond Surveying
and Engineering*

PRELIMINARY
NOT FOR
CONSTRUCTION

LANDSCAPE PLAN – INTERIOR

CONVENIENCE STORE
WITH DIESEL

CITY OF WAUKESHA, WISCONSIN

| N ^O . | DATE | DESCRIPTION |
|------------------|------|-------------|
| | | |
| | | |
| | | |
| | | |
| | | |
| | | |
| | | |
| | | |
| | | |

DRAWN BY _____ RASNI
SCALE _____ GRAPHIC
PROJ. NO. 3140A10
DATE 04-13-2016
SHEET _____ | SP 2

LSP2