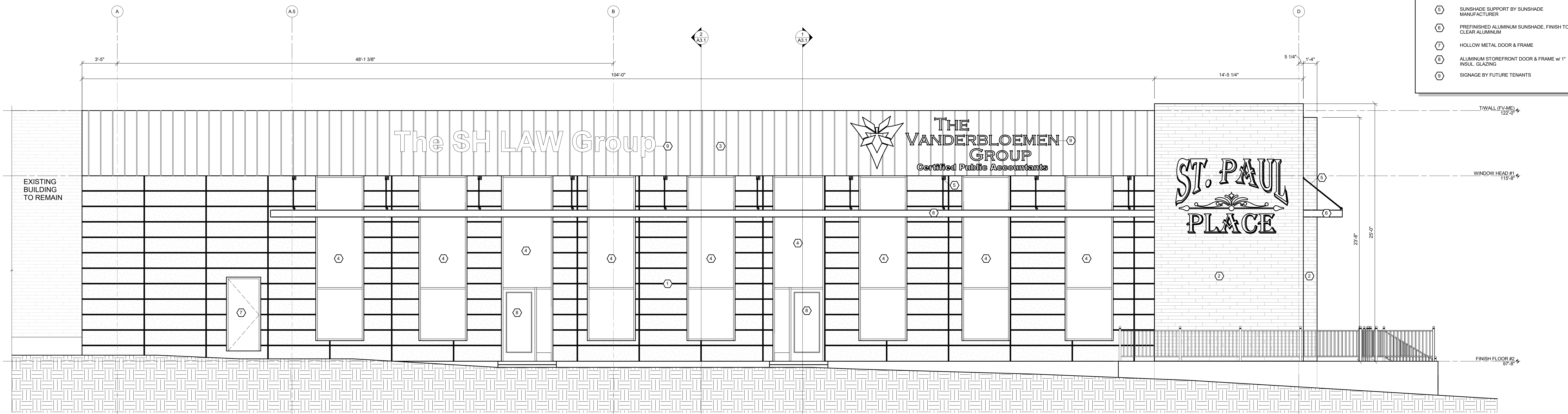


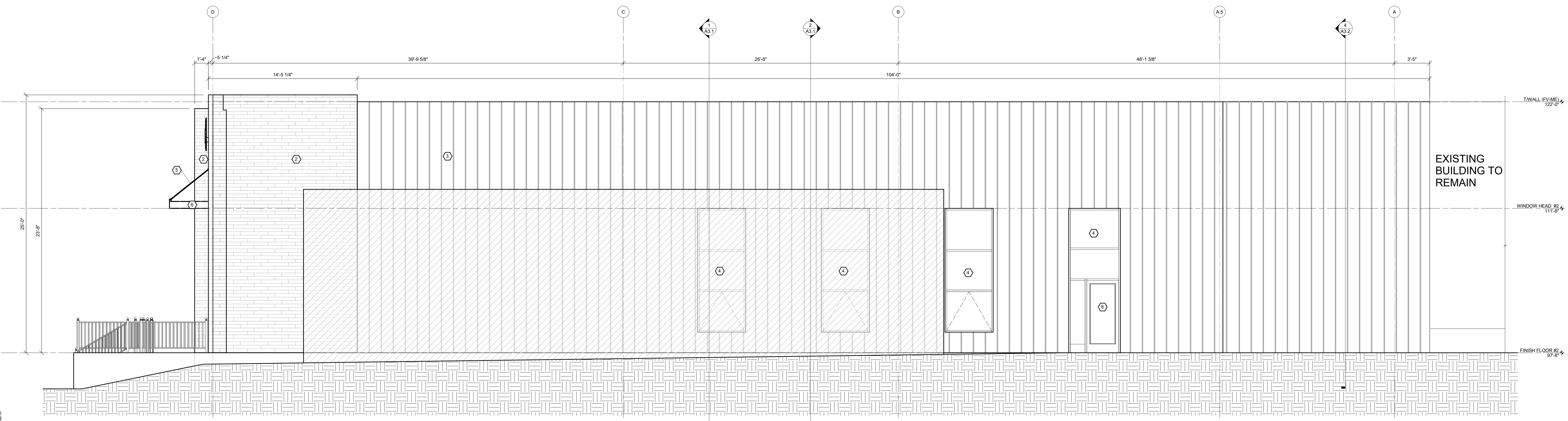
KEY NOTES	
1	PREFINISHED FIBER CEMENT PANEL SIDING BY NICHHA
2	IPE WOOD SHIP LAP PLANK SIDING WITH OILED FINISH
3	PREFINISHED STANDING SEAM METAL SIDING WITH CONCEALED FASTENERS AND SNAP LOCK TYP SEAMS
4	PREFINISHED ALUMINUM STOREFRONT FRAMING w/ 1" INSUL. GLAZING - HEAD HEIGHT 111'-0"
5	SUNSHADE SUPPORT BY SUNSHADE MANUFACTURER
6	PREFINISHED ALUMINUM SUNSHADE, FINISH TO BE CLEAR ALUMINUM
7	HOLLOW METAL DOOR & FRAME
8	ALUMINUM STOREFRONT DOOR & FRAME w/ 1" INSUL. GLAZING
9	SIGNAGE BY FUTURE TENANTS

EXCEL
ARCHITECTS • ENGINEERS • SURVEYORS
100 CAMELOT DRIVE
FOND DU LAC, WI 54935
PHONE: (920) 926-9800
WWW.EXCELENGINEER.COM

PROJECT INFORMATION	
PROJECT NUMBER	1403810



SOUTH ELEVATION
SCALE: 1/4" = 1'-0"



NORTH ELEVATION
SCALE: 1/4" = 1'-0"

ST. PAUL PLACE PARTNERS, LLC
222 WEST SAINT PAUL AVE.
WAUKESHA, WI • 53188

PROFESSIONAL SEAL

SHEET DATES	
SHEET ISSUE	DEC. 6, 2018

REVISIONS	

SHEET INFORMATION	
EXTERIOR ELEVATIONS	
SHEET NUMBER	A2.0

A2.0