

Project: Avid Hotel, Waukesha WI
Date: 2/17/2019
Model: DU2R1056
Wattage: 144
Qty: 15

Project 1

Waukesha_AVID.dlx

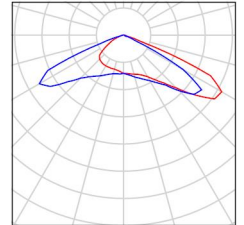
Operator
Telephone
Fax
e-Mail

Project 1 / Luminaire parts list

15 Pieces

Article No.:
Luminous flux (Luminaire): 21012 lm
Luminous flux (Lamps): 21010 lm
Luminaire Wattage: 137.7 W
Luminaire classification according to CIE: 100
CIE flux code: 26 67 98 100 100
Fitting: 1 x User defined (Correction Factor 1.000).

See our luminaire catalog for an image of the luminaire.

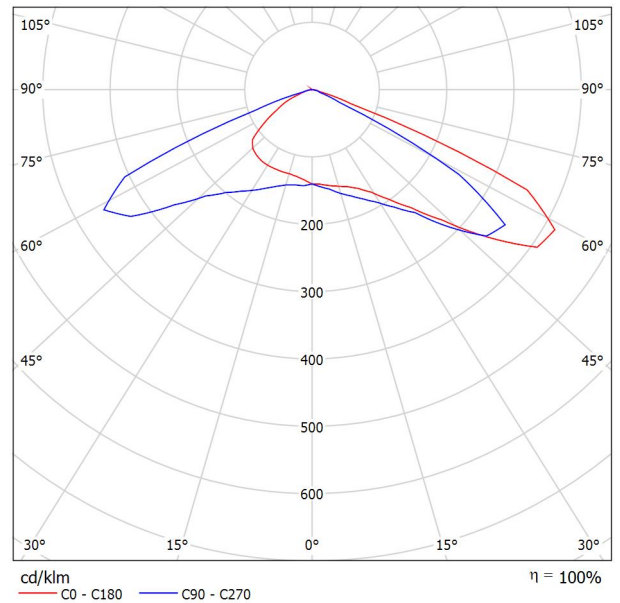


Operator
Telephone
Fax
e-Mail

/ Luminaire Data Sheet

See our luminaire catalog for an image of the luminaire.

Luminous emittance 1:

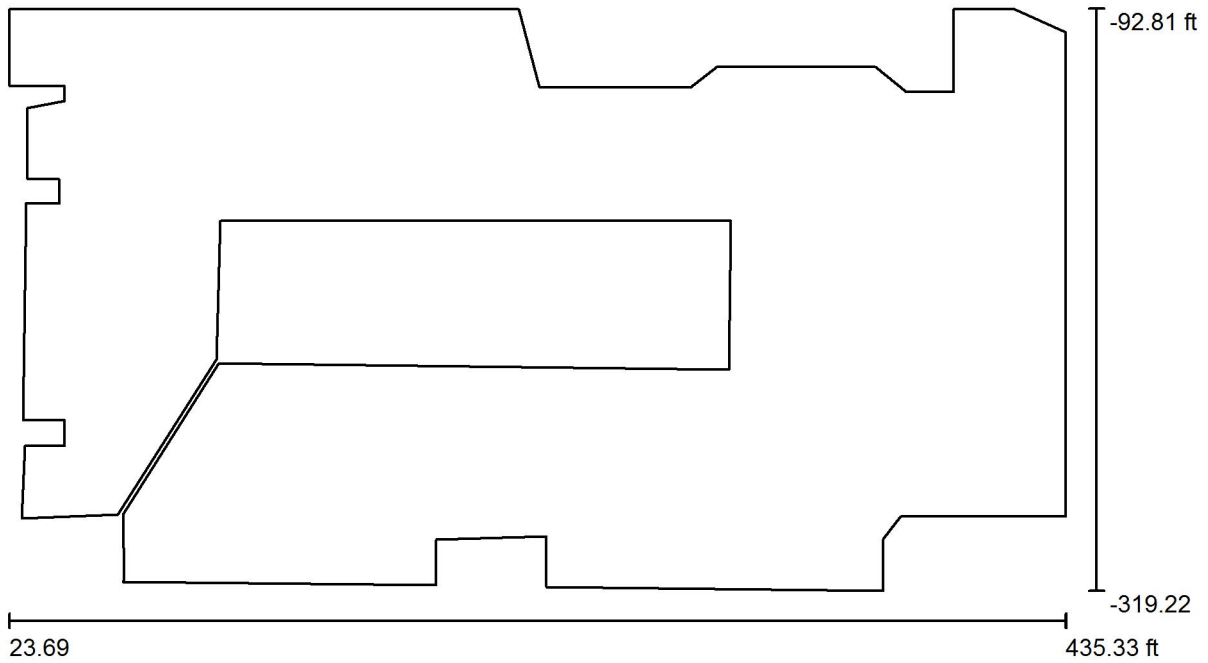


Luminaire classification according to CIE: 100
CIE flux code: 26 67 98 100 100

Due to missing symmetry properties, no UGR table can be displayed for this luminaire.

Operator
Telephone
Fax
e-Mail

Exterior Scene 1 / Planning data



Light loss factor: 0.80, ULR (Upward Light Ratio): 0.0%

Scale 1:897

Luminaire Parts List

No.	Pieces	Designation (Correction Factor)	Φ (Luminaire) [lm]	Φ (Lamps) [lm]	P [W]
1	15	(1.000)	21012	21010	137.7
			Total: 315178	Total: 315143	2065.8

Project 1

Waukesha_AVID.dlx

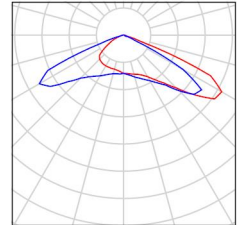
Operator
Telephone
Fax
e-Mail

Exterior Scene 1 / Luminaire parts list

15 Pieces

Article No.:
Luminous flux (Luminaire): 21012 lm
Luminous flux (Lamps): 21010 lm
Luminaire Wattage: 137.7 W
Luminaire classification according to CIE: 100
CIE flux code: 26 67 98 100 100
Fitting: 1 x User defined (Correction Factor 1.000).

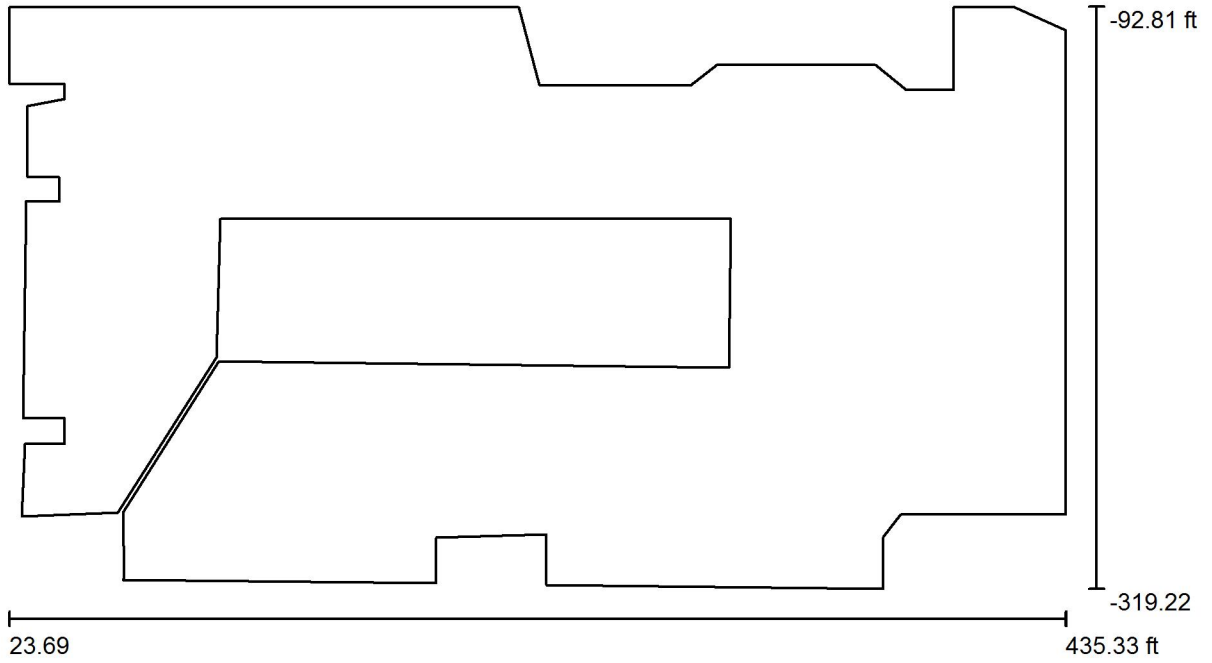
See our luminaire catalog for an image of the luminaire.





Operator
Telephone
Fax
e-Mail

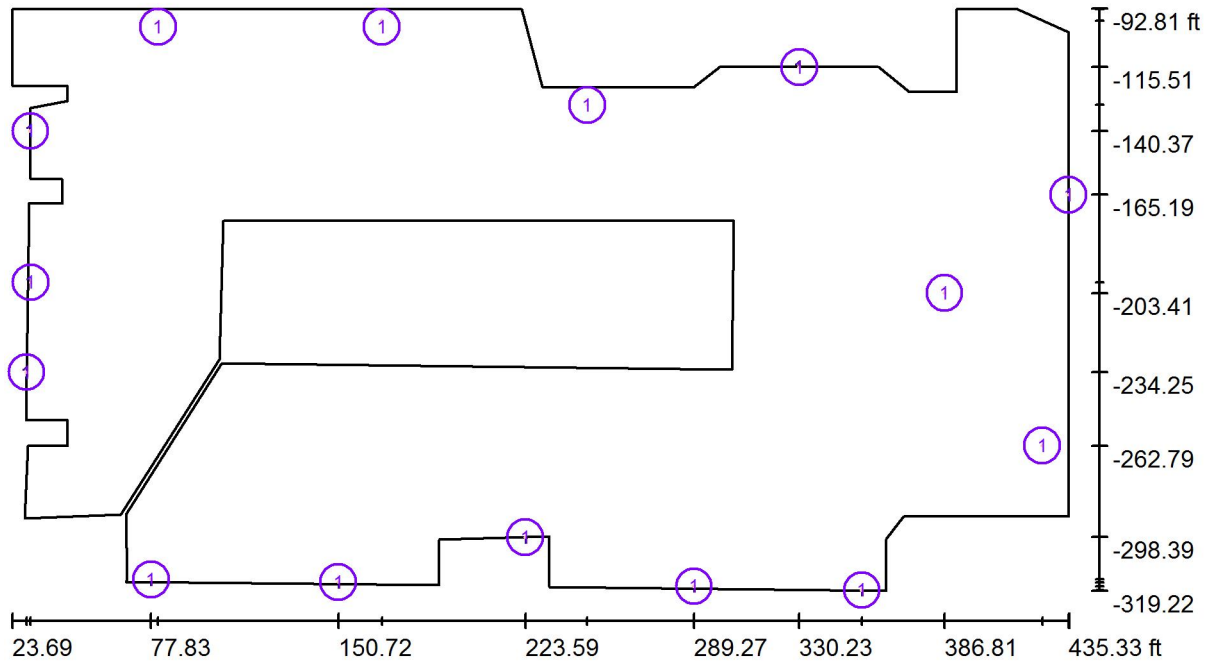
Exterior Scene 1 / Floor plan



Scale 1 : 897

Operator
Telephone
Fax
e-Mail

Exterior Scene 1 / Luminaires (layout plan)



Scale 1 : 897

Luminaire Parts List

No.	Pieces	Designation
1	15	



Operator
Telephone
Fax
e-Mail

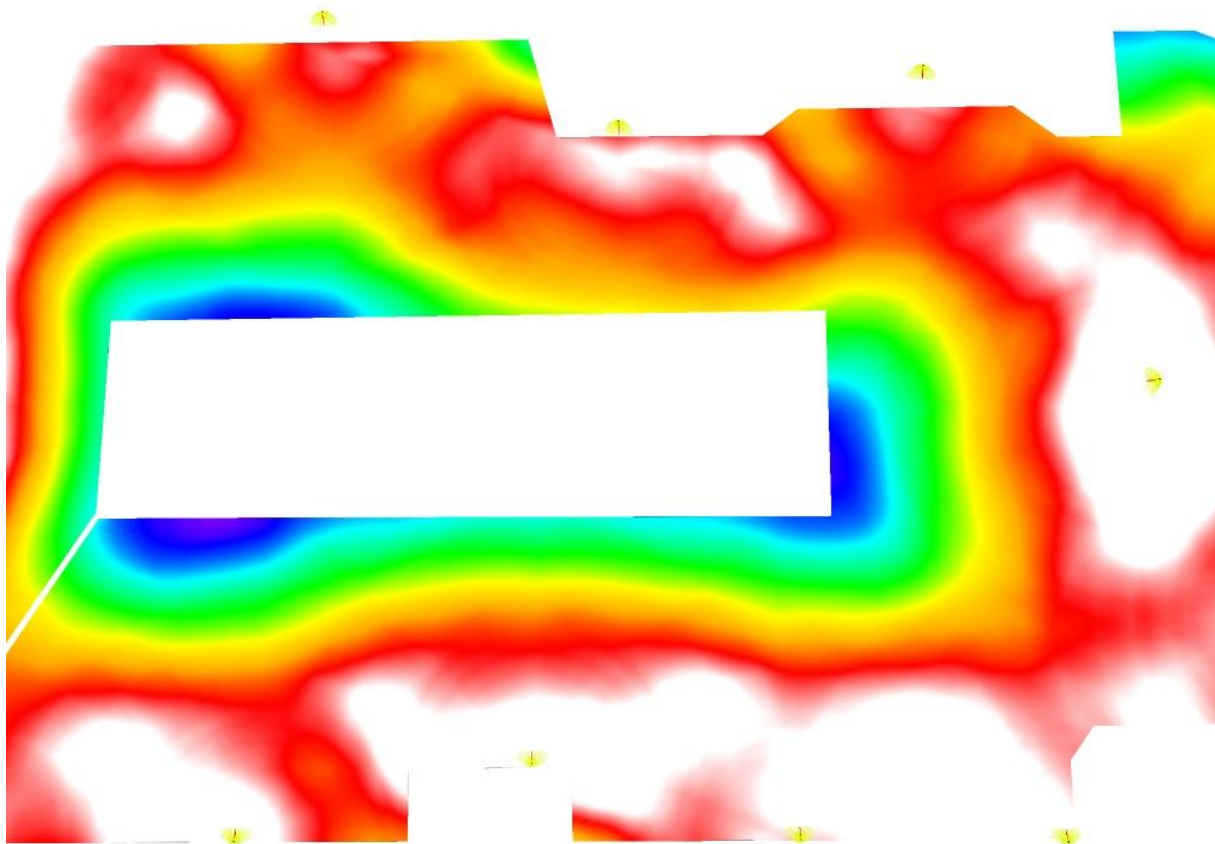
Exterior Scene 1 / 3D Rendering





Operator
Telephone
Fax
e-Mail

Exterior Scene 1 / False Color Rendering

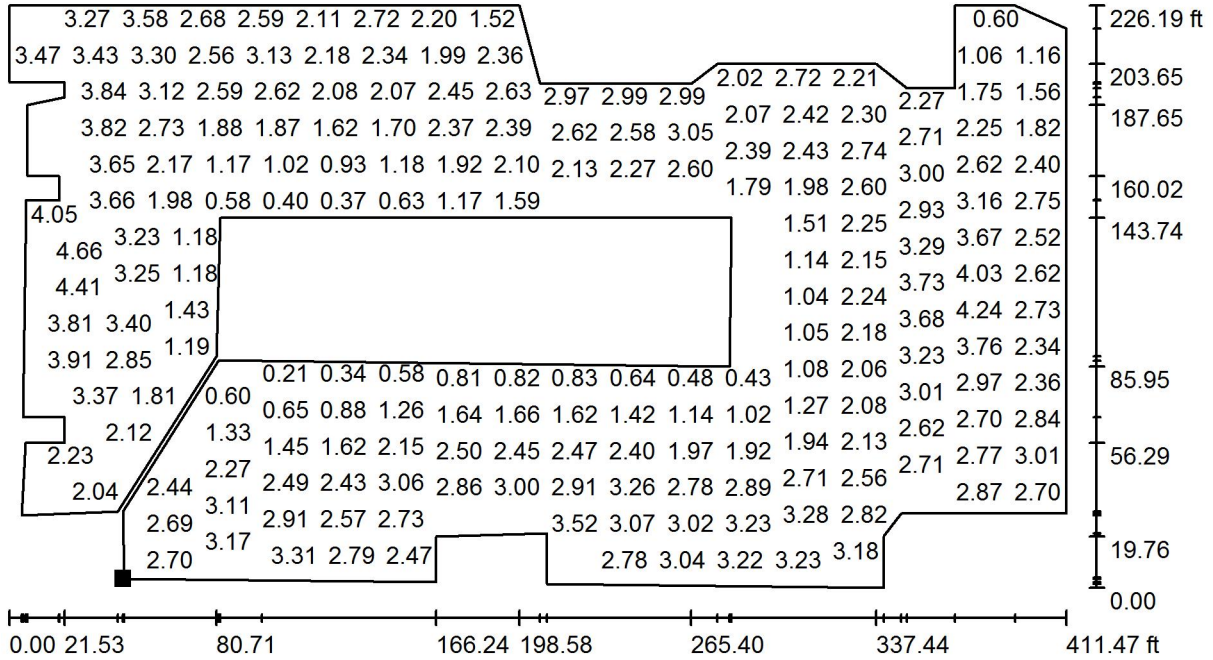


0 0.13 0.25 0.50 1.00 1.50 2.00 2.50 3.00

fc

Operator
Telephone
Fax
e-Mail

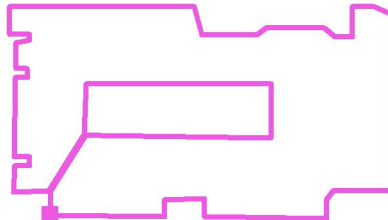
Exterior Scene 1 / Ground Element 1 / Surface 1 / Value Chart (E)



Values in Footcandles, Scale 1 : 897

Not all calculated values could be displayed.

Position of surface in external scene:
Marked point:
(68.036 ft, -315.735 ft, 0.000 ft)



Grid: 128 x 128 Points

E_{av} [fc]
2.35

E_{min} [fc]
0.16

E_{max} [fc]
5.07

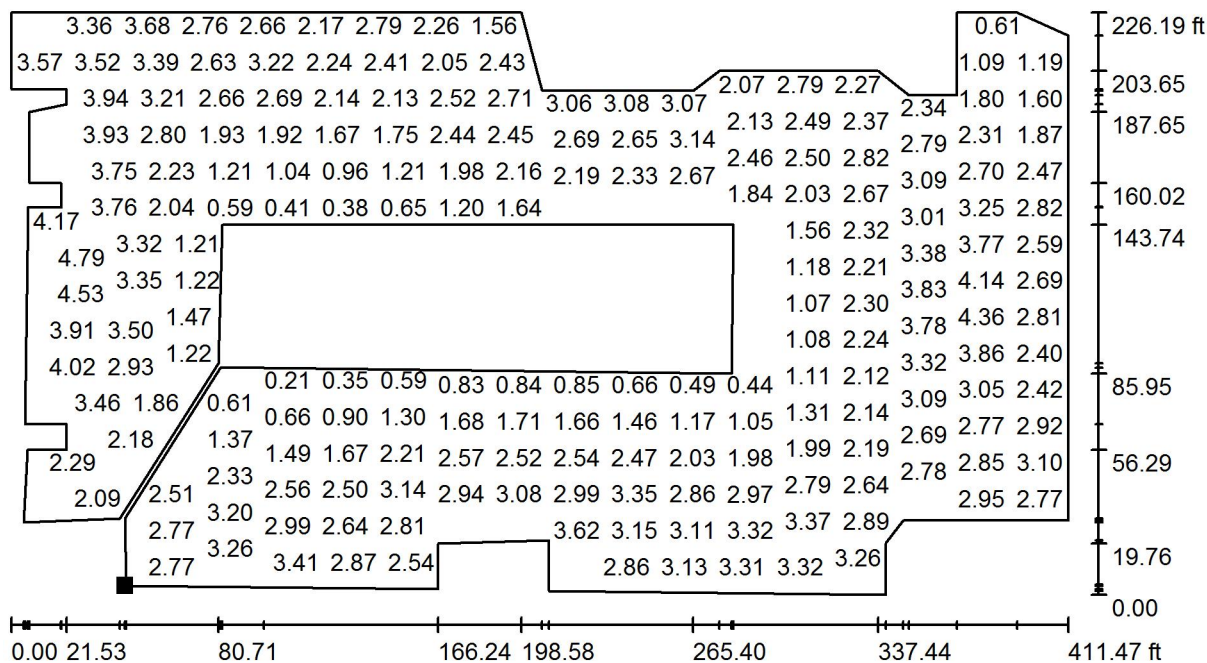
u_0
0.069

E_{min} / E_{max}
0.032



Operator
Telephone
Fax
e-Mail

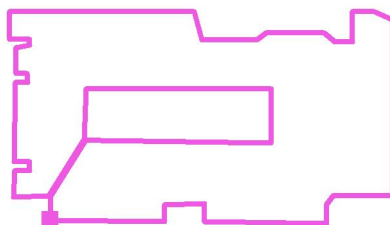
Exterior Scene 1 / Ground Element 1 / Surface 1 / Value Chart (L)



Values in Candela/m², Scale 1 : 897

Not all calculated values could be displayed.

Position of surface in external scene:
Marked point:
(68.036 ft, -315.735 ft, 0.000 ft)



Grid: 128 x 128 Points

L_{av} [cd/m²]
2.41

L_{min} [cd/m²]
0.17

L_{max} [cd/m²]
5.21