

TDI ASSOCIATES, INC.
ARCHITECTS, ENGINEERS, PLANNERS

N8 W22350 JOHNSON DRIVE, SUITE B4
WAUKESHA, WISCONSIN 53186
PHONE 262-409-2530 FAX 262-409-2531

SUPERIOR CRANE CORPORATION
RETAINING WALL

208 WILMONT DRIVE
WAUKESHA, WISCONSIN

TDI ASSOCIATES, INC
All Rights Reserved

OWNERSHIP OF DOCUMENTS
This document, and the ideas and design incorporated herein, as an instrument of professional service, is the sole property of TDI Associates, Inc., and is not to be used in whole or in part for any other project or purpose without the expressed written authorization of TDI Associates, Inc.

Sheet Title
TRUCK
DOCK
SECTIONS
& DETAILS

Issued For: _____ Date: _____
Issued For: _____ Date: _____

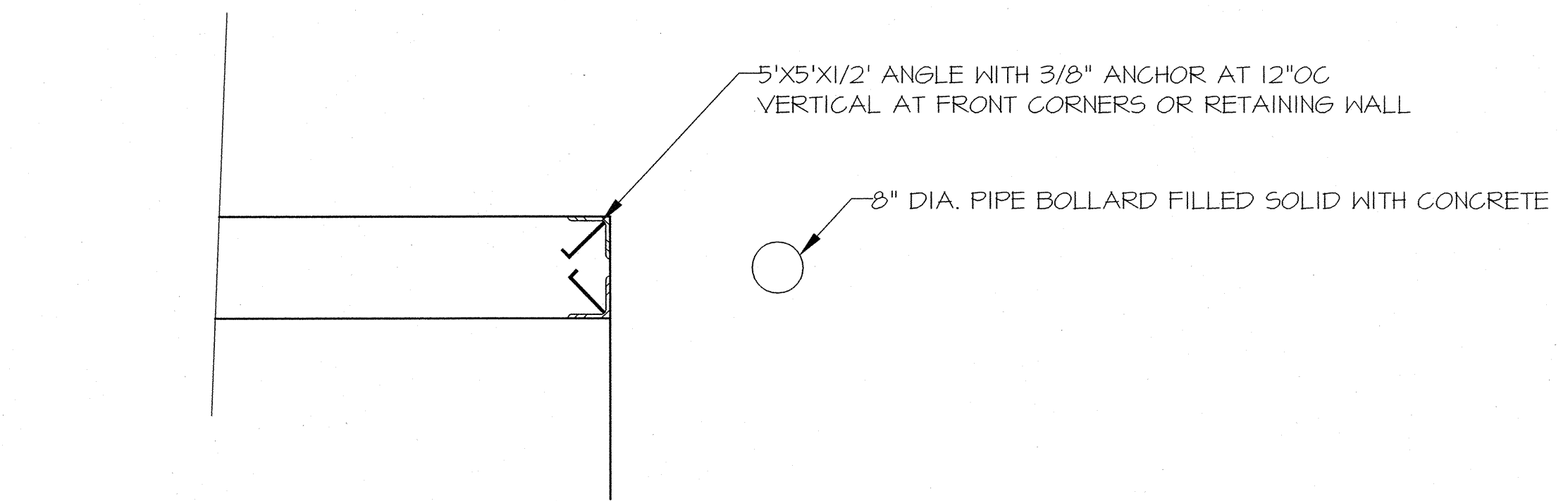
Date: 9/11/2015

Job NO.: 13250.000

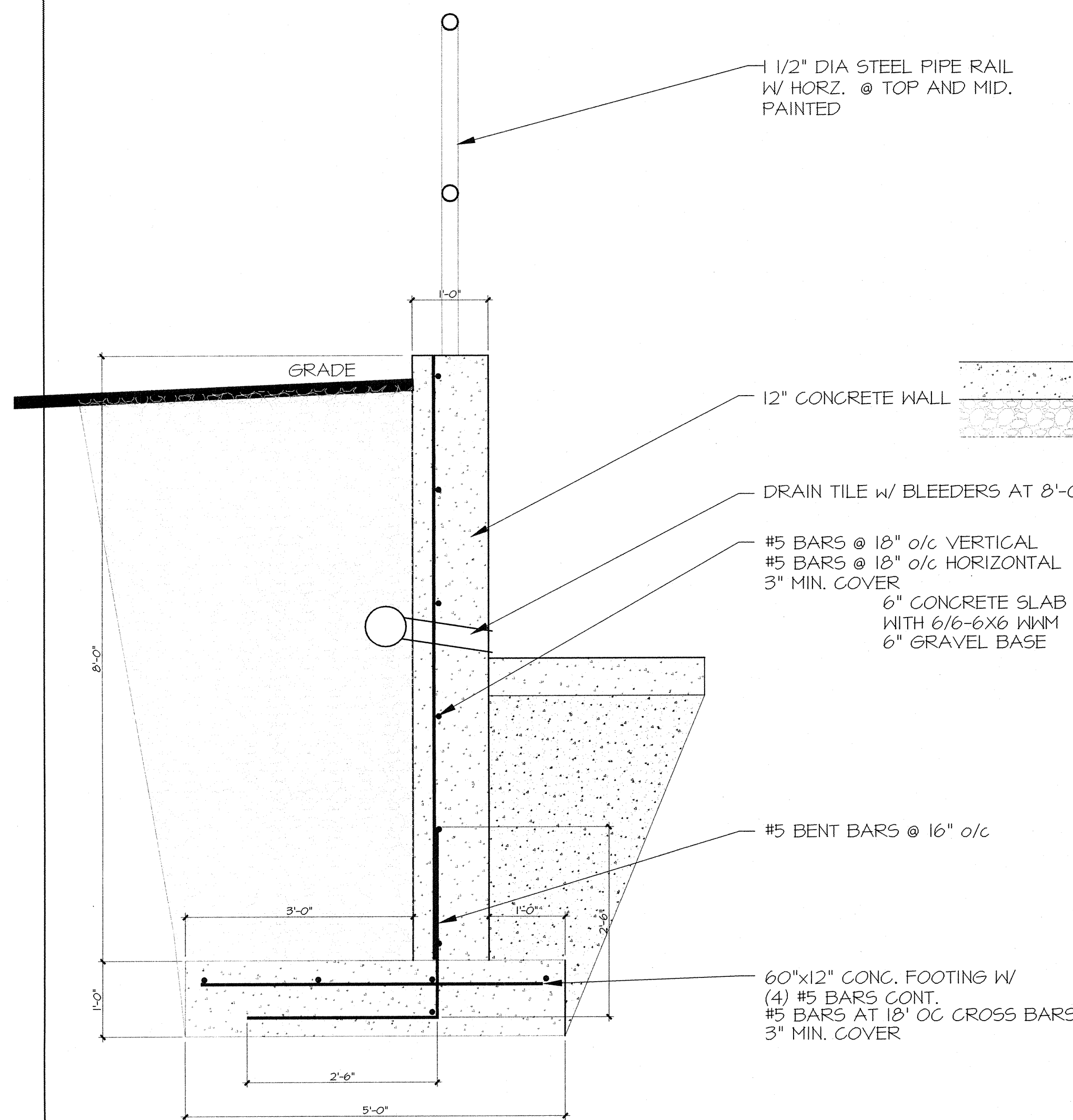
Drawn By: REW

Sheet No.

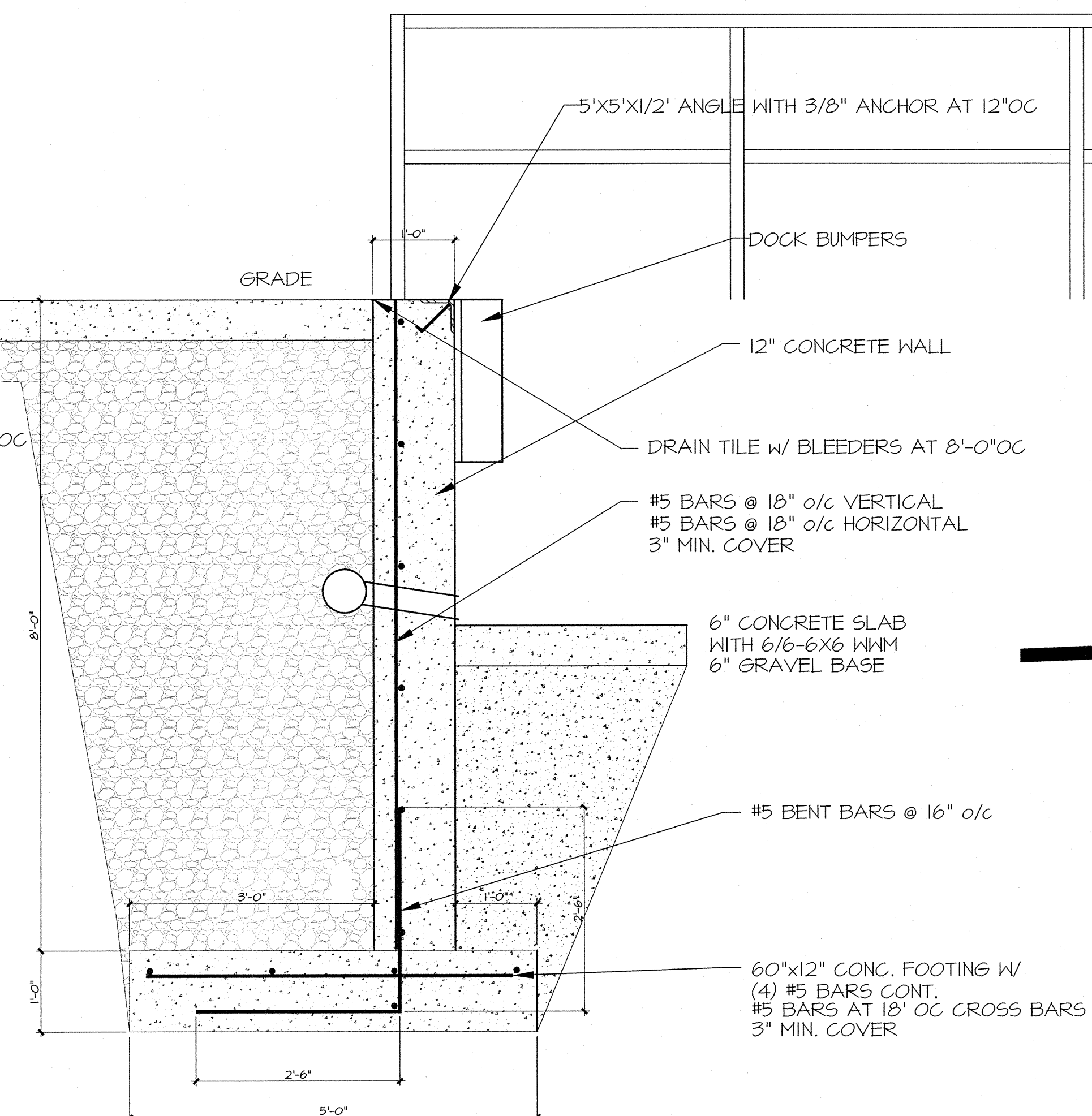
S2.2



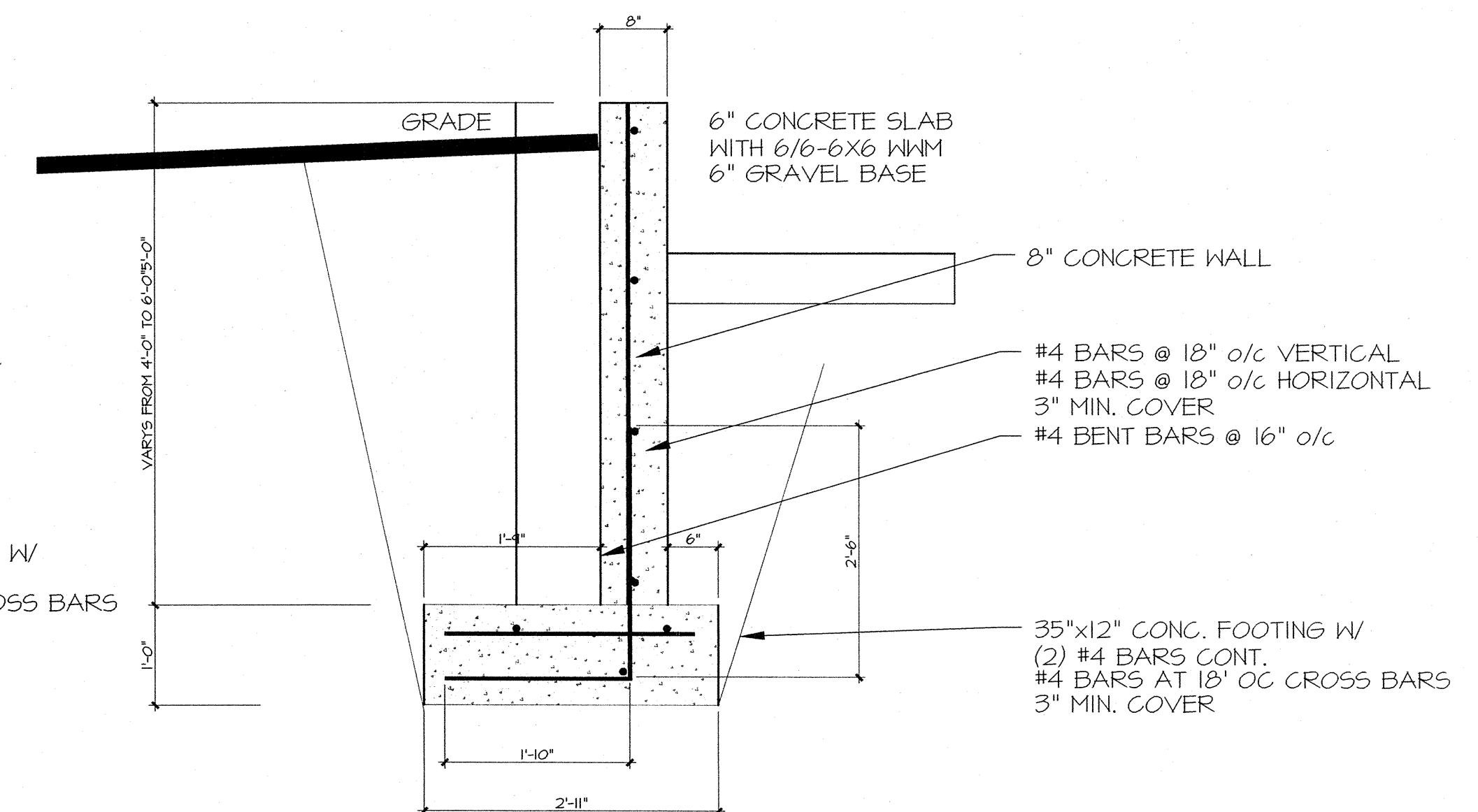
4 RETAINING WALL CORNER DETAIL AT DOCK
3/4" = 1'-0"



3 RETAINING WALL SECTION AT DOCK
3/4" = 1'-0"



2 RETAINING WALL SECTION AT DOCK
3/4" = 1'-0"



S2.2