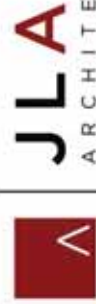


FIRST FLOOR



SECOND & THIRD FLOORS



JLA
ARCHITECTS

FRAME PARK COMMONS
CONCEPTUAL PLANS – BUILDING 'A'

SEPT 17, 2019
1"=30'@ 11x17





BUILDING 'A' DATA

FLOOR	UNITS					PARKING PROVIDED				
	JR 1BR	1BR	2BR	3BR	TOTAL	BR'S	COVERED	SURFACE	TOTALS	RATIOS
4	0	11	6	1	18	26				
3	0	8	8	1	17	27				
2	0	8	8	1	17	27				
1	0	0	0	0	0	0				
	2,900 S.F. RESIDENTIAL COMMON SPACE					42				
T.	0	27	22	3	52	80	42	58	100	1.92 / U
	0%	52%	42%	6%						1.25 / BR

FOURTH FLOOR

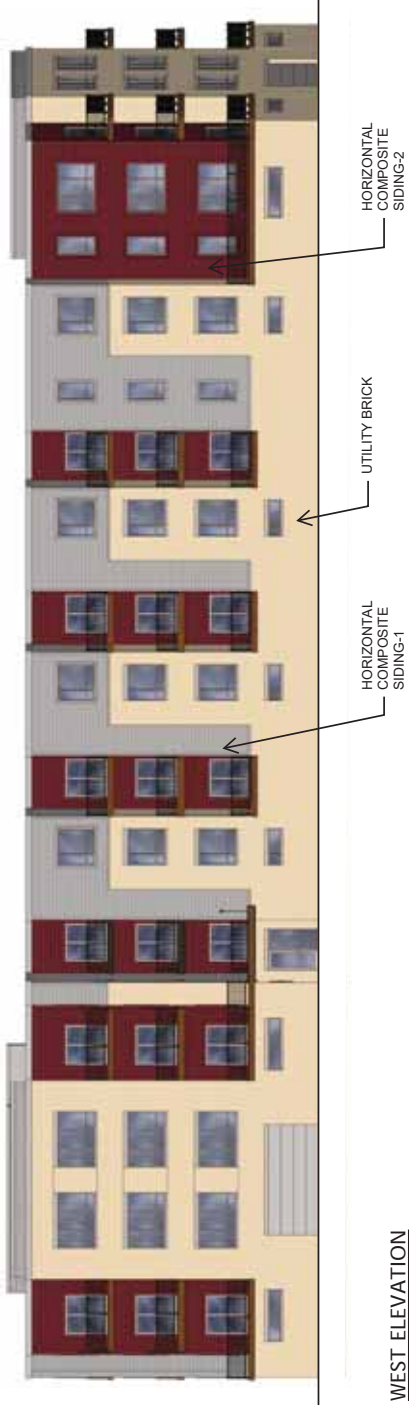


JLA
ARCHITECTS

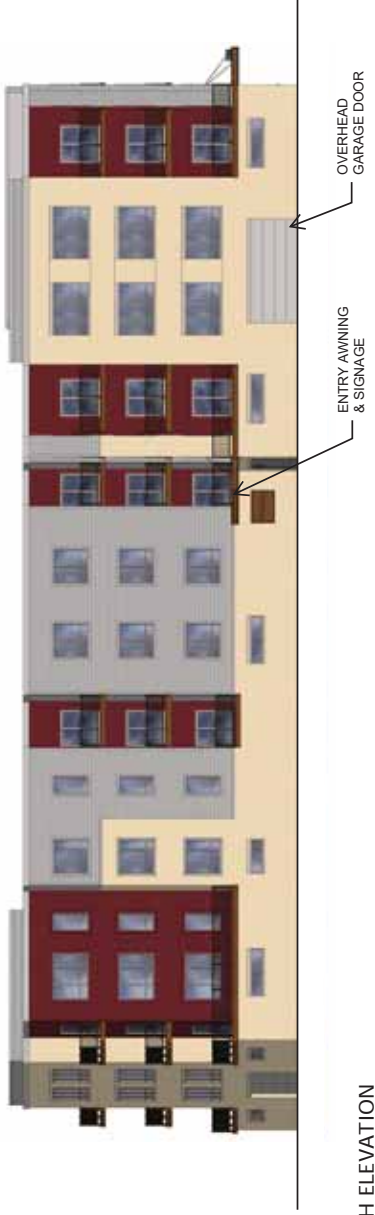
FRAME PARK COMMONS
CONCEPTUAL PLANS – BUILDING 'A'



SEPT 17, 2019
1"=30'@11X17



WEST ELEVATION



SOUTH ELEVATION

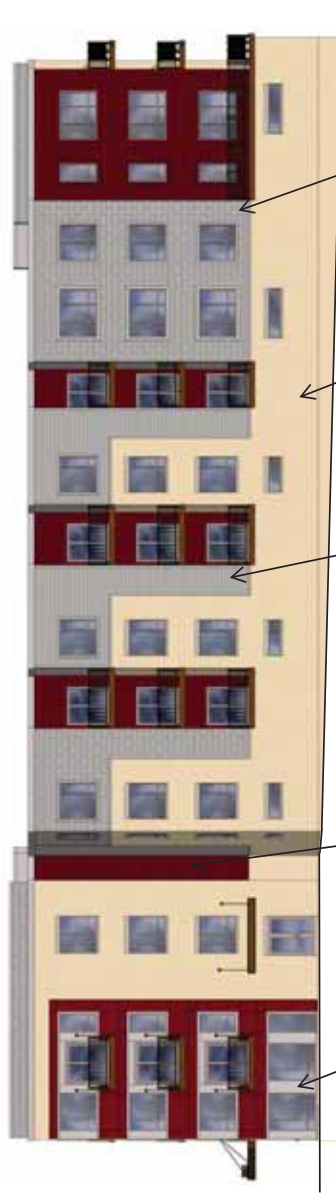




PANEL COMPOSITE SIDING-2

ENTRY AWNING & SIGNAGE

EAST ELEVATION



METAL PANEL

UTILITY BRICK

HORIZONTAL COMPOSITE SIDING-1

HORIZONTAL COMPOSITE SIDING-2

PANEL COMPOSITE SIDING-1

NORTH ELEVATION



JLA
ARCHITECTS

FRAME PARK COMMONS
CONCEPTUAL ELEVATIONS – BUILDING 'A'

SEPT 17, 2019
1"=20' @ 11x17





VIEW LOOKING SOUTH WEST



JLA
ARCHITECTS

FRAME PARK COMMONS

CONCEPTUAL IMAGE - BUILDING 'A'

SEPT 17, 2019





VIEW LOOKING NORTH EAST



JLA
ARCHITECTS

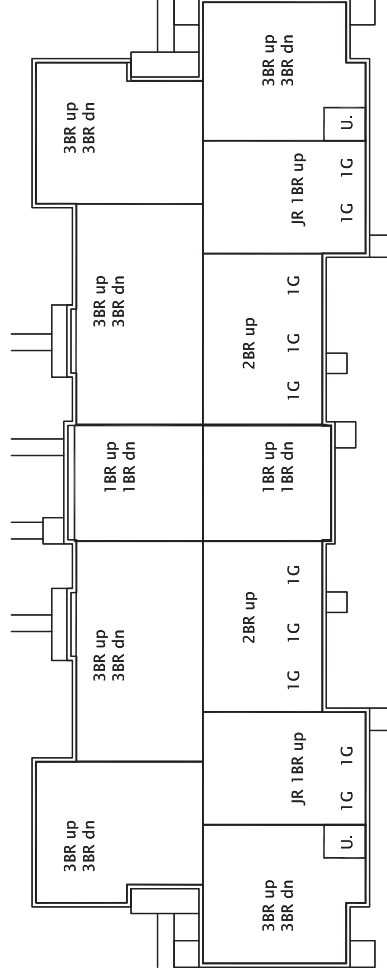
FRAME PARK COMMONS

CONCEPTUAL IMAGE - BUILDING 'A'

SEPT 17, 2019



BUILDING 'B' DATA										
FLOOR	UNITS						PARKING PROVIDED			RATIOS
	JR 1BR	1BR	2BR	3BR	TOTAL	BR'S	COVERED	SURFACE	TOTALS	
2	2	2	2	6	12	26				
1	0	2	0	6	8	20				
T.	2	4	2	12	20	46	10	29	39	1.95 / U
	10%	20%	10%	60%						0.85 / BR



CONCEPT FLOOR PLAN





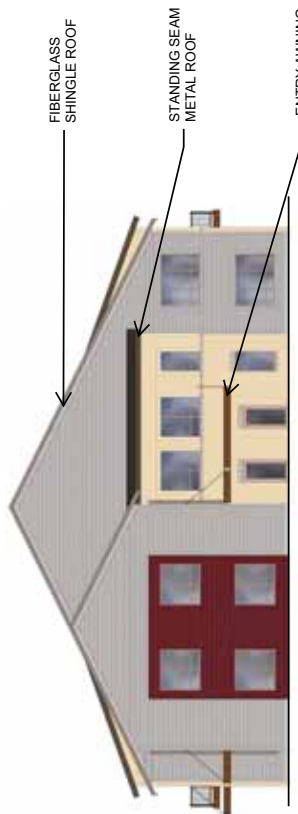
WEST ELEVATION

PANEL
COMPOSITE
SIDING-3

UTILITY BRICK

HORIZONTAL
COMPOSITE
SIDING-1

HORIZONTAL
COMPOSITE
SIDING-2



NORTH ELEVATION

FIBERGLASS
SHINGLE ROOF

STANDING SEAM
METAL ROOF

ENTRY AWNING



JLA
ARCHITECTS

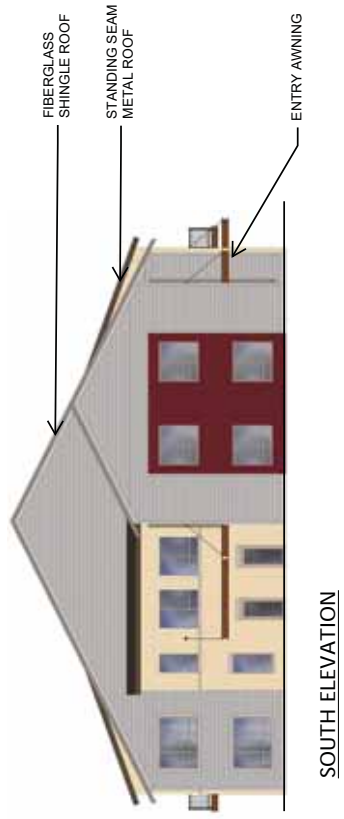
FRAME PARK COMMONS

CONCEPTUAL ELEVATIONS – BUILDING 'B'





EAST ELEVATION



SOUTH ELEVATION



JLA
ARCHITECTS

FRAME PARK COMMONS

CONCEPTUAL ELEVATIONS – BUILDING 'B'

SEPT 17, 2019
1"=20' @ 11x17





VIEW LOOKING NORTH EAST



JLA
ARCHITECTS

FRAME PARK COMMONS

CONCEPTUAL IMAGE - BUILDING 'B'

SEPT 17, 2019

