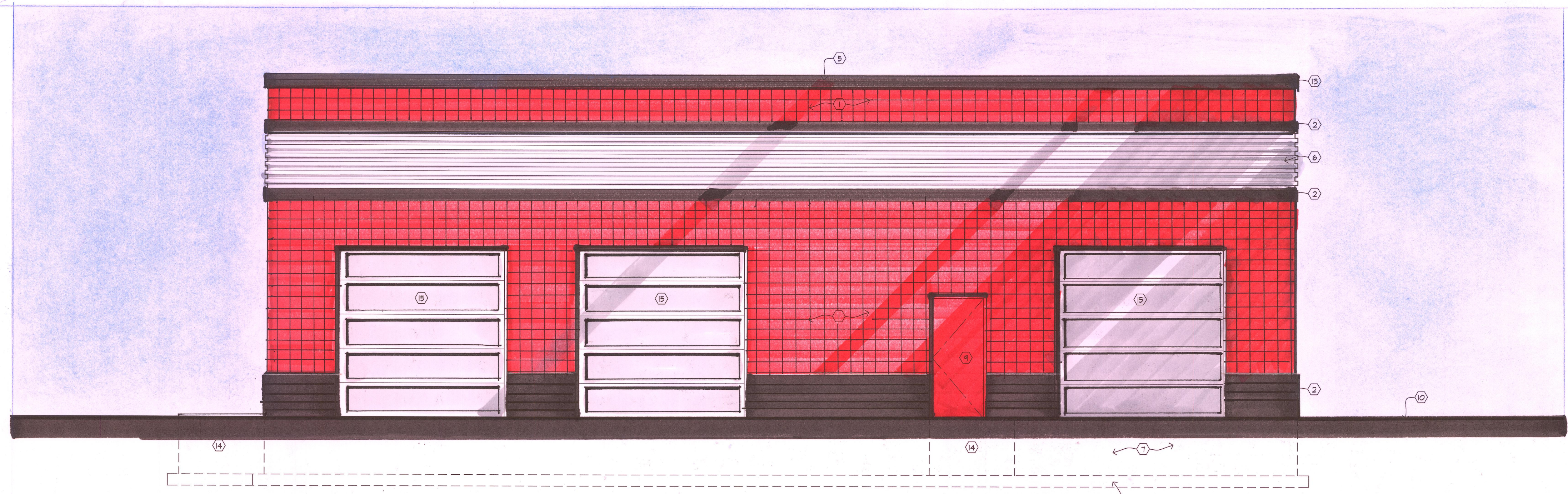


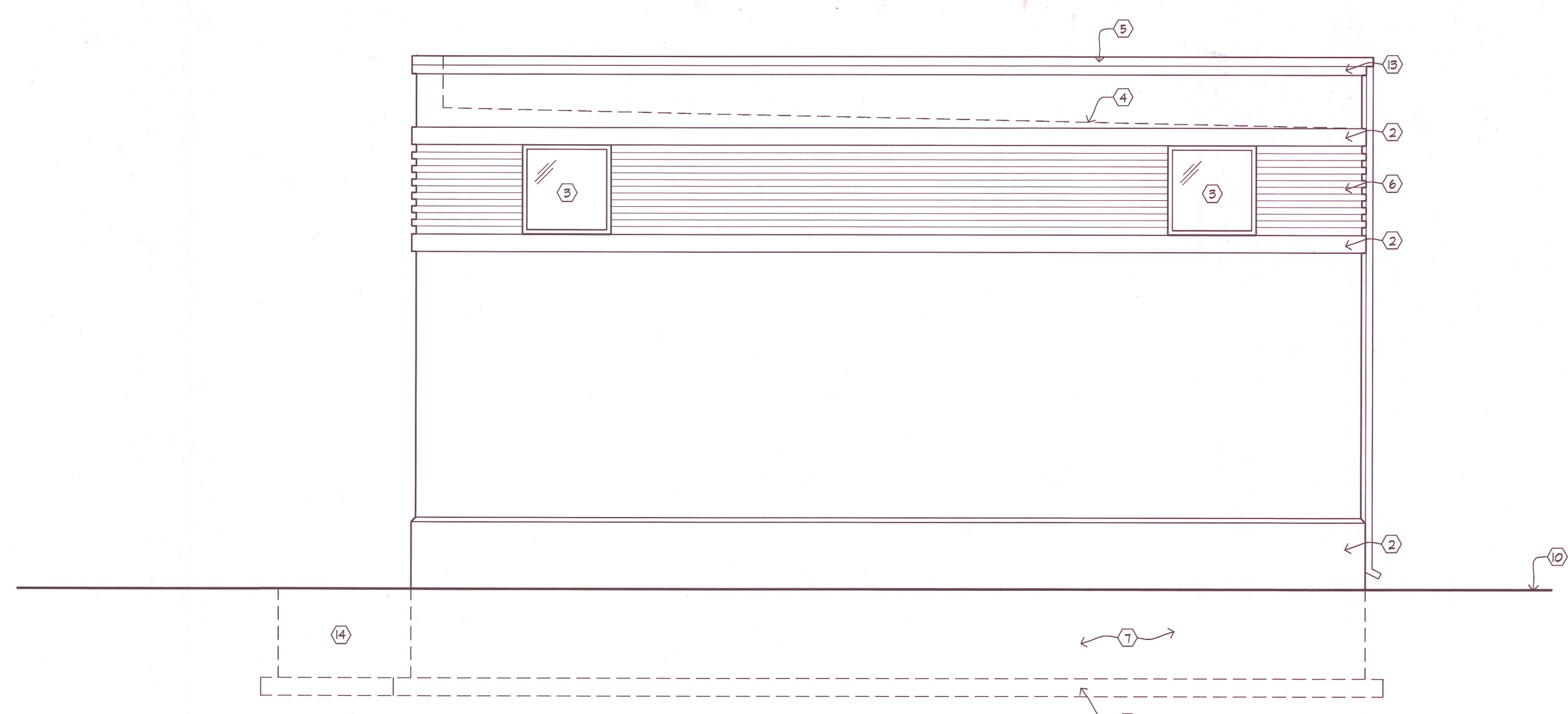
Project:  
**COAST CAR WASH  
STORAGE BUILDING**  
Hwy 164 & Arcadian Ave  
Waukesha, WI 53186

Contractor:  
**Triad Construction, Inc.**  
2077 S. 116th Street  
West Allis, WI 53214

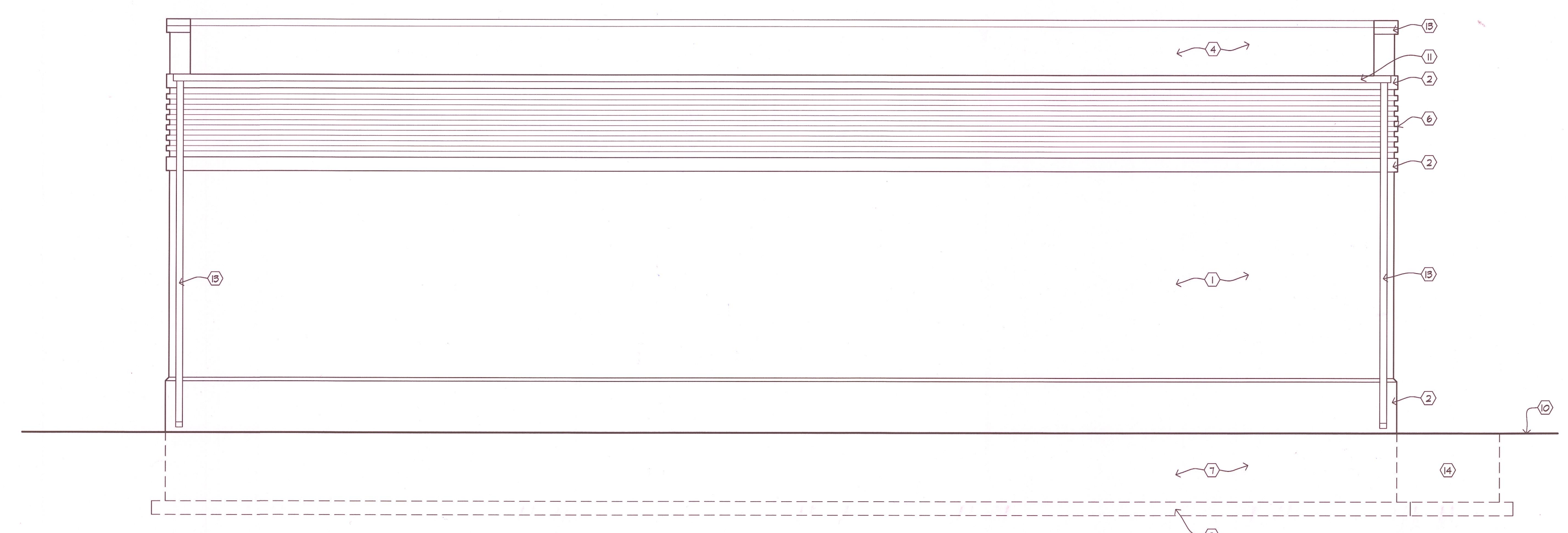
COPYRIGHT Keller Architectural Design, LLC. 2012  
ALL RIGHTS RESERVED  
THIS DRAWING IS NOT TO BE REPRODUCED, CHANGED,  
COPIED OR ASSIGNED TO ANY THIRD PARTY IN ANY  
FORM OR MANNER WITHOUT FIRST OBTAINING THE  
EXPRESSED WRITTEN PERMISSION OF Keller Architectural  
Design, LLC. THE CLIENT AGREES TO INDEMNIFY AND  
HOLD THE ARCHITECT HARMLESS FROM ANY  
DAMAGES, LIABILITY, OR COST, INCLUDING  
ATTORNEY'S FEES AND COSTS OF DEFENSE ARISING  
FROM ANY CHANGES OR ALTERATIONS MADE BY  
ANYONE OTHER THAN THE ARCHITECT, OR FROM ANY  
REUSE OF THE DRAWINGS OR DATA WITHOUT THE  
PRIOR WRITTEN CONSENT OF THE ARCHITECT.



1 EAST ELEVATION  
1/4" = 1'-0"



2 NORTH ELEVATION  
South Elevation Similar  
1/4" = 1'-0"



3 WEST ELEVATION  
1/4" = 1'-0"

- ELEVATION CODED NOTES:**
- 1 12" STACKED BOND VERTICAL SCORE CMU
  - 2 14" SPLITFACE CMU TO MATCH CARWASH W/TOP EDGE COPED AT 45 DEGREES
  - 3 WINDOWS (3'-4" x 3'-4") INSULATED GLASS IN ALUMINUM FRAME
  - 4 ROOF BEYOND
  - 5 ALUMINUM COPING (COLOR TO MATCH CARWASH)
  - 6 METAL PANELS (COLOR TO MATCH CARWASH)
  - 7 CMU FOUNDATION
  - 8 POURED IN PLACE CONCRETE FOOTING
  - 9 INSULATED HOLLOW METAL 3'-0" x 7'-0" DOOR IN 2" HOLLOW METAL FRAME
  - 10 GRADE
  - 11 ALUMINUM GUTTER
  - 12 ALUMINUM DOWNEPOUT
  - 13 SMOOTH FACE 14" CMU
  - 14 CONCRETE STOOP (5'-0" x 5'-0")
  - 15 TRANSLUCENT OVERHEAD DOOR
  - 16 4" REINFORCED CONCRETE SLAB

Revisions:

Date	Number	Description

Sheet Title:  
INTERIOR ELEVATIONS

Project No.: 17.30

Date: September 11, 2017

Sheet No.: