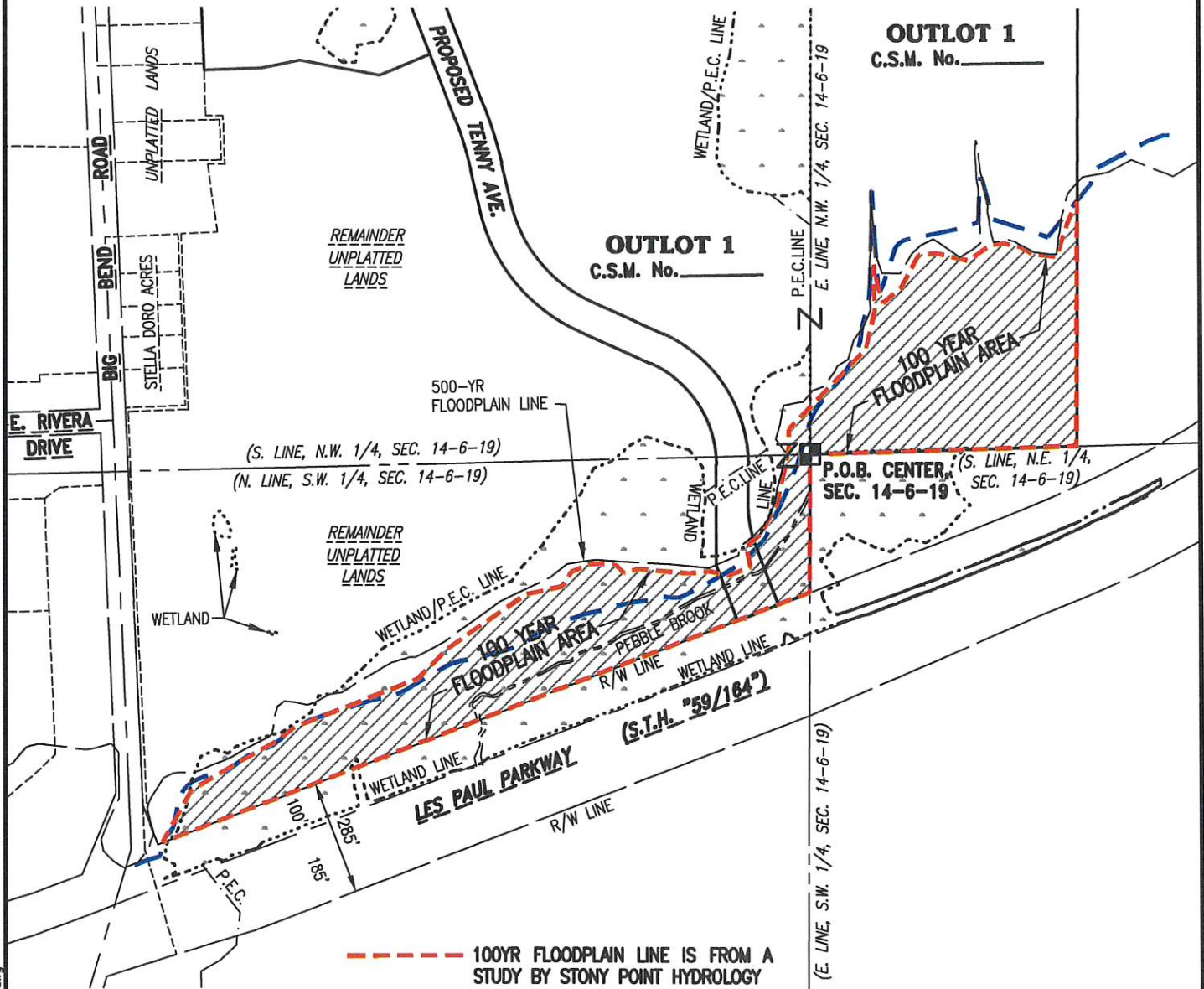


EXHIBIT "A"

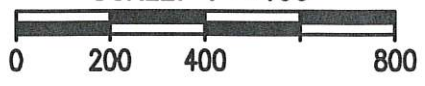
100-YR FLOODPLAIN AREA



- - - - - 100YR FLOODPLAIN LINE IS FROM A STUDY BY STONY POINT HYDROLOGY
AREA=13.4849 Ac. (587,404 S.F.)
- - - - - 100YR FLOODPLAIN LINE IS FROM WAUKESHA COUNTY GIS



SCALE: 1" = 400'



4100 N. CALHOUN ROAD
Suite 300
Brookfield, WI 53005
Phone: (262) 790-1480
Fax: (262) 790-1481

H:\C800\889\2011-01\Survey\ESMT-EXHIBITS\885DEX_Floodplain_Color Exhibit.dwg

EXHIBIT "A"

100-YR FLOODPLAIN AREA

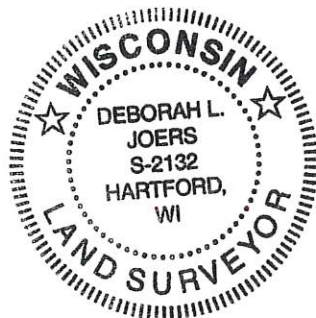
LEGAL DESCRIPTION:

A portion of the 100-year Floodplain line located in a part of the Southwest 1/4, Northwest 1/4 and Northeast 1/4 of Section 14, Town 6 North, Range 19 East, in the City of Waukesha, Waukesha County, Wisconsin, now being more particularly bounded and described as follows:

Beginning at the Center Corner of said Section 14; Thence South 00°21'37" West along the East line of the said Southwest 1/4 of said Section 14, 343.15 feet to a point on the North Right-of-Way line of "Les Paul Parkway" (S.T.H. "59/164"); Thence South 68°59'25" West along said North line, 1738.47 feet to a point; Thence North 29°19'54" East, 148.61 feet to a point; Thence North 59°41'55" East, 161.33 feet to a point; Thence North 61°01'48" East, 77.03 feet to a point; Thence North 53°19'12" East, 63.94 feet to a point; Thence North 68°45'25" East, 331.56 feet to a point; Thence North 44°55'29" East, 107.08 feet to a point; Thence North 55°40'27" East, 239.59 feet to a point; Thence North 77°54'58" East, 93.85 feet to a point; Thence North 29°07'39" East, 39.93 feet to a point; Thence North 67°02'37" East, 54.17 feet to a point; Thence South 89°39'04" East, 59.14 feet to a point; Thence South 47°59'39" East, 33.73 feet to a point; Thence North 73°03'30" East, 35.21 feet to a point; Thence South 85°18'18" East, 128.77 feet to a point; Thence North 83°01'00" East, 49.02 feet to a point; Thence South 76°43'30" East, 50.72 feet to a point; Thence North 68°54'30" East, 58.98 feet to a point; Thence North 10°25'43" West, 55.40 feet to a point; Thence North 54°18'00" East, 45.46 feet to a point; Thence North 28°13'13" East, 87.76 feet to a point; Thence North 12°14'44" East, 141.59 feet to a point; Thence North 00°23'45" West, 45.87 feet to a point; Thence North 44°17'32" East, 277.61 feet to a point; Thence North 14°02'12" East, 97.20 feet to a point; Thence North 01°04'14" West, 116.12 feet to a point; Thence South 11°33'37" East, 48.73 feet to a point; Thence South 16°49'15" East, 48.74 feet to a point; Thence North 48°42'56" East, 59.20 feet to a point; Thence North 29°19'15" East, 90.85 feet to a point; Thence North 84°17'25" East, 43.62 feet to a point; Thence South 77°07'06" East, 82.17 feet to a point; Thence North 56°30'17" East, 73.09 feet to a point; Thence North 85°53'43" East, 32.99 feet to a point; Thence South 77°30'15" East, 42.53 feet to a point; Thence South 57°59'37" East, 32.76 feet to a point; Thence South 85°10'08" East, 61.85 feet to a point; Thence North 17°43'25" East, 88.40 feet to a point; Thence North 24°46'31" East, 57.12 feet to a point; Thence South 00°22'41" West, 606.26 feet to a point on the South line of the Northeast 1/4 of said Section 14; Thence South 88°10'12" West along said South line, 670.28 feet to the point of beginning of this description.

Said area contains 587,404 Square Feet (or 3.4849 Acres) of land, more or less.

Date: 11/19/2019



A handwritten signature in blue ink that reads "Deborah L. Joers".

Deborah L. Joers, P.L.S.
Professional Land Surveyor, S-2132
TRIO ENGINEERING, LLC
4100 N. Calhoun Road, Suite 300
Brookfield, WI 53005
Phone: (262)790-1480 Fax: (262)790-1481