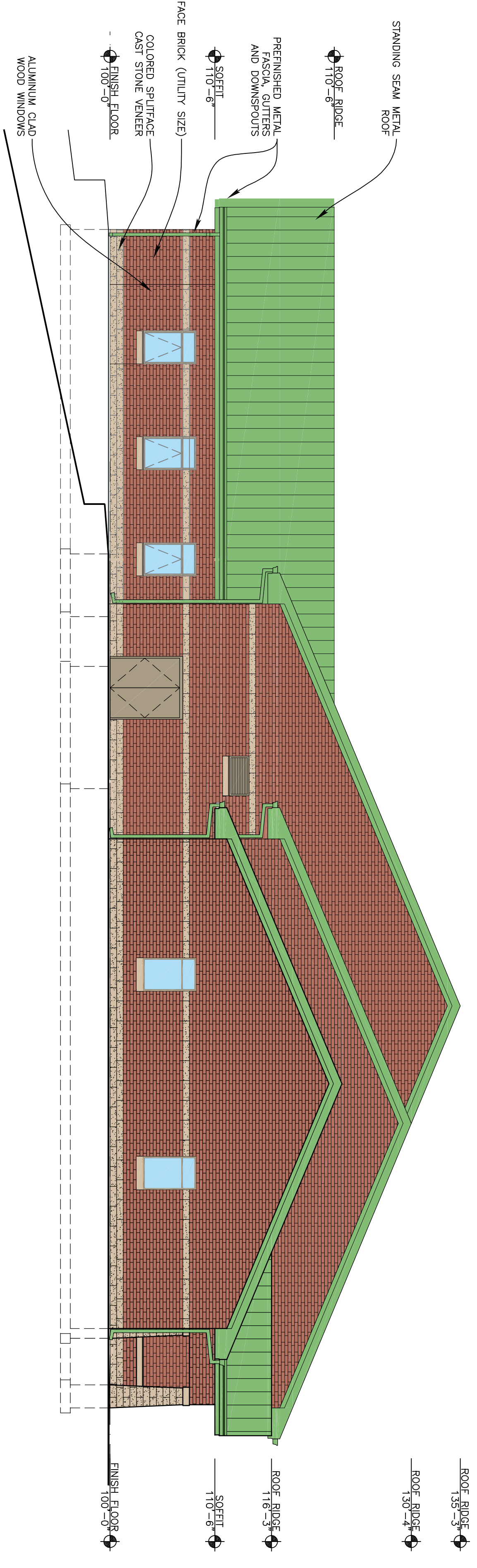
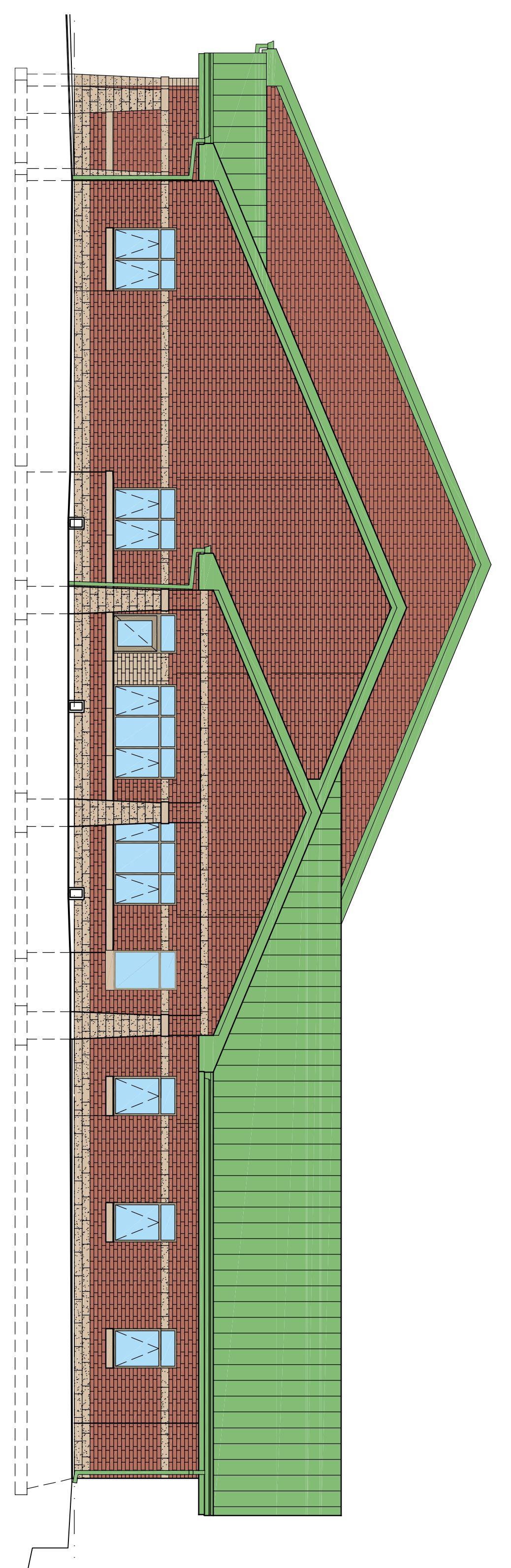


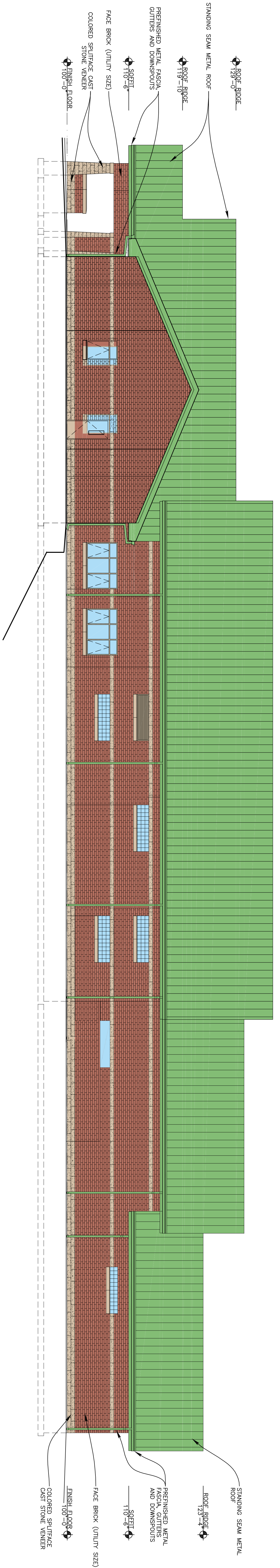
1 SOUTH ELEVATION
 A601 / 1/8" = 1'-0"
 0 8 16



2 WEST ELEVATION
 A601 / 1/8" = 1'-0"
 0 8 16

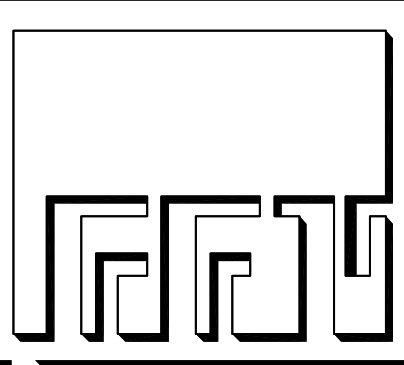


3 EAST ELEVATION
 A601 / 1/8" = 1'-0"
 0 8 16



4 NORTH ELEVATION
 A601 / 1/8" = 1'-0"
 0 8 16

PRELIMINARY DRAWING
 NOT FOR CONSTRUCTION
 DATE PRINTED: 11/14/2016



FISCHER-FISCHER-THEIS, INC. ARCHITECTS • ENGINEERS • PLANNERS
 S22 W22660 BROADWAY • WAUKESHA, WISCONSIN 53186-8199
 (262) 547-6969 • FAX (262) 547-6960 • E-MAIL: fft@fftarchitects.com

A NEW FIRE STATION NO. 3 FOR THE CITY OF WAUKESHA
 NORTHEAST CORNER OF S.T.H. "59" (LES PAUL PARKWAY) AND C.T.H. "X" (GENESEE ROAD)
 WAUKESHA, WISCONSIN

TYPE	DATE	BY	REV #
	11/14/2016	CJF	

CONSULTANT

PROJECT NO. 13055

SHEET NO. A601