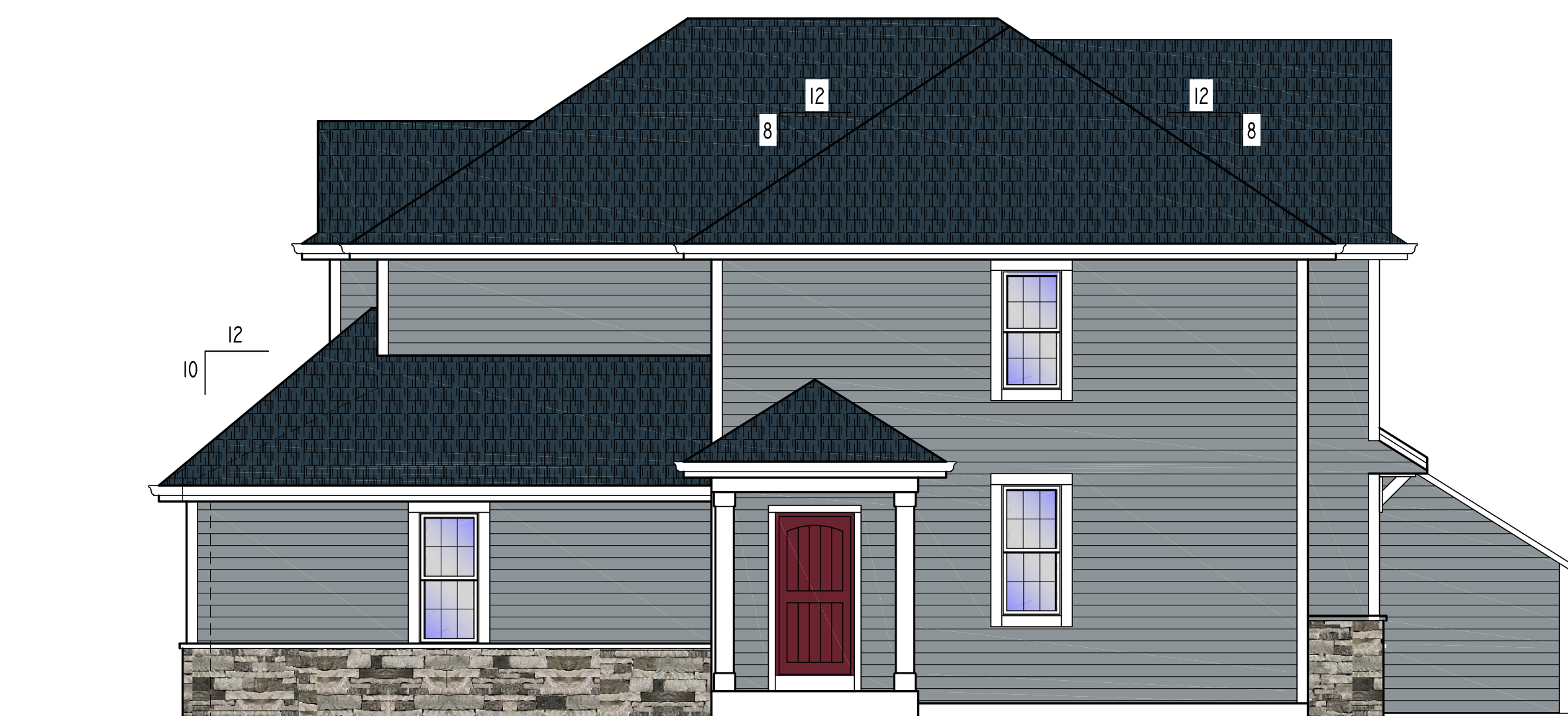


EXTERIOR MATERIALS

- STONE: BLACK FOREST STONE
- SIDING: GRAY SLATE HARDI PLANK
- FASCIA: WHITE ALUMINUM CLAD
- SOFFIT: WHITE ALUMINUM CLAD
- CORNER BOARDS: WHITE MIRATEC
- ROOFING: ESTATE GRAY
- ENTRY DOORS: BURGUNDY
- GARAGE DOOR: WHITE
- TRIM: WHITE MIRATEC



SQUARE FOOTAGE:
 1ST FLOOR - 660 SQ. FT.
 2ND FLOOR - 862 SQ. FT.
 TOTAL - 1522 SQ. FT.
 GARAGE AREA - -
 OVERALL WIDTH - 150'-3"
 OVERALL DEPTH - 50'-0"



PRAIRIE SONG COURTYARDS - ELEVATION B
FRONT ENTRY GARAGE
GRAY SLATE
8/7/19

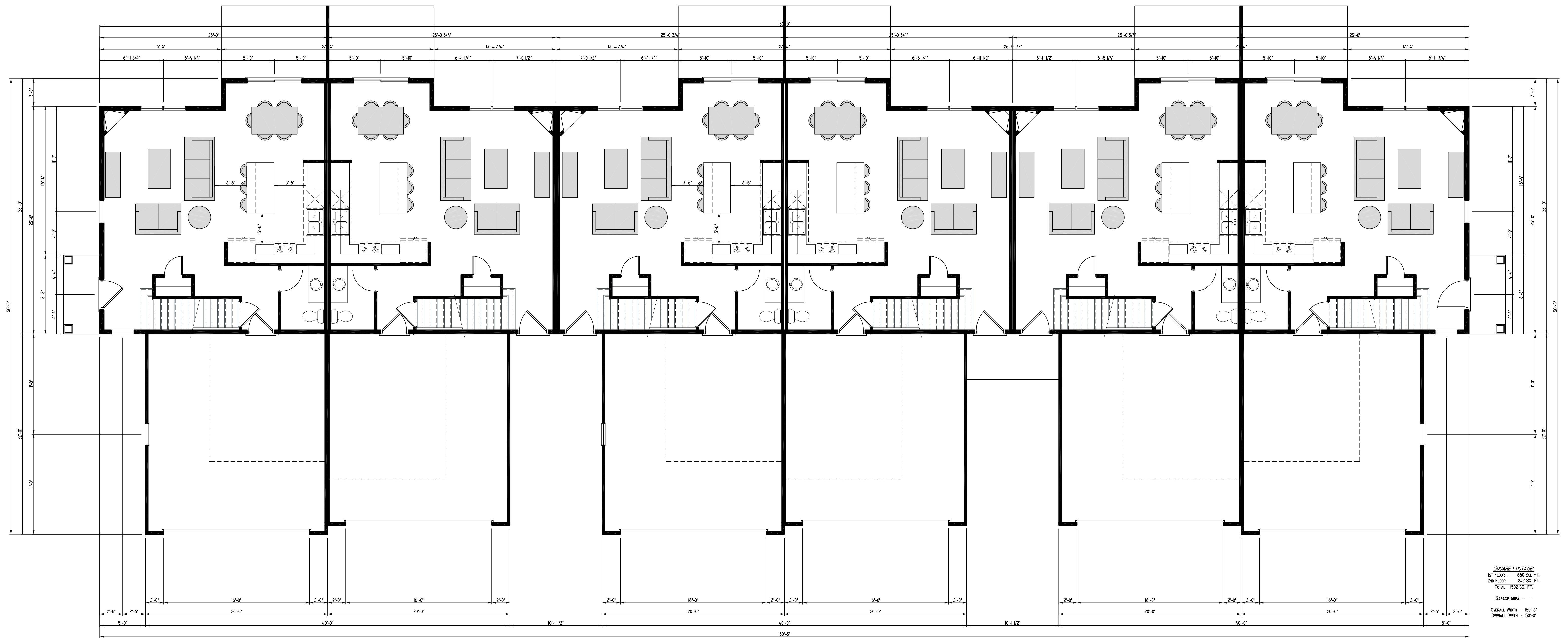
- EXTERIOR MATERIALS**
- STONE: BLACK FOREST STONE
 - SIDING: EVENING BLUE HARDI PLANK
 - FASCIA: WHITE ALUMINUM CLAD
 - SOFFIT: WHITE ALUMINUM CLAD
 - CORNER BOARDS: WHITE MIRATEC
 - ROOFING: ESTATE GRAY
 - ENTRY DOORS: BURGUNDY
 - GARAGE DOOR: WHITE
 - TRIM: WHITE MIRATEC



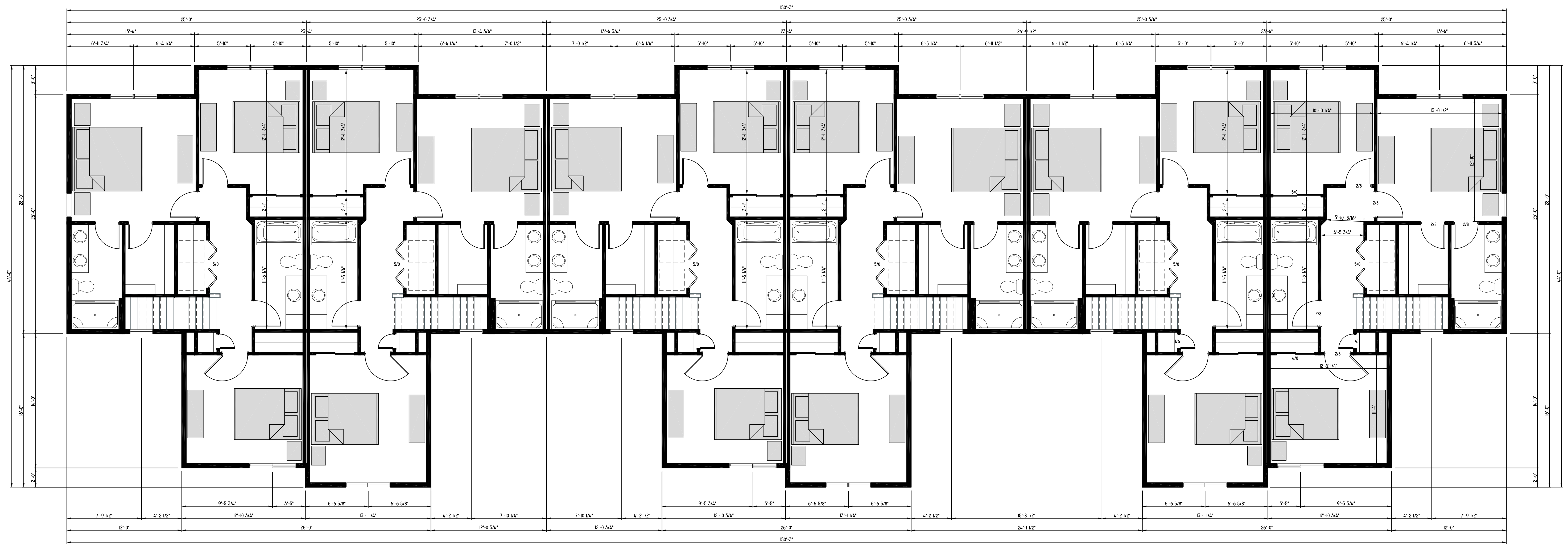
SQUARE FOOTAGE:
 1ST FLOOR - 660 SQ. FT.
 2ND FLOOR - 842 SQ. FT.
 TOTAL - 1502 SQ. FT.
 GARAGE AREA - -
 OVERALL WIDTH - 150'-3"
 OVERALL DEPTH - 50'-0"



PRAIRIE SONG COURTYARDS - ELEVATION A
SIDE ENTRY GARAGE
EVENING BLUE
8/7/19



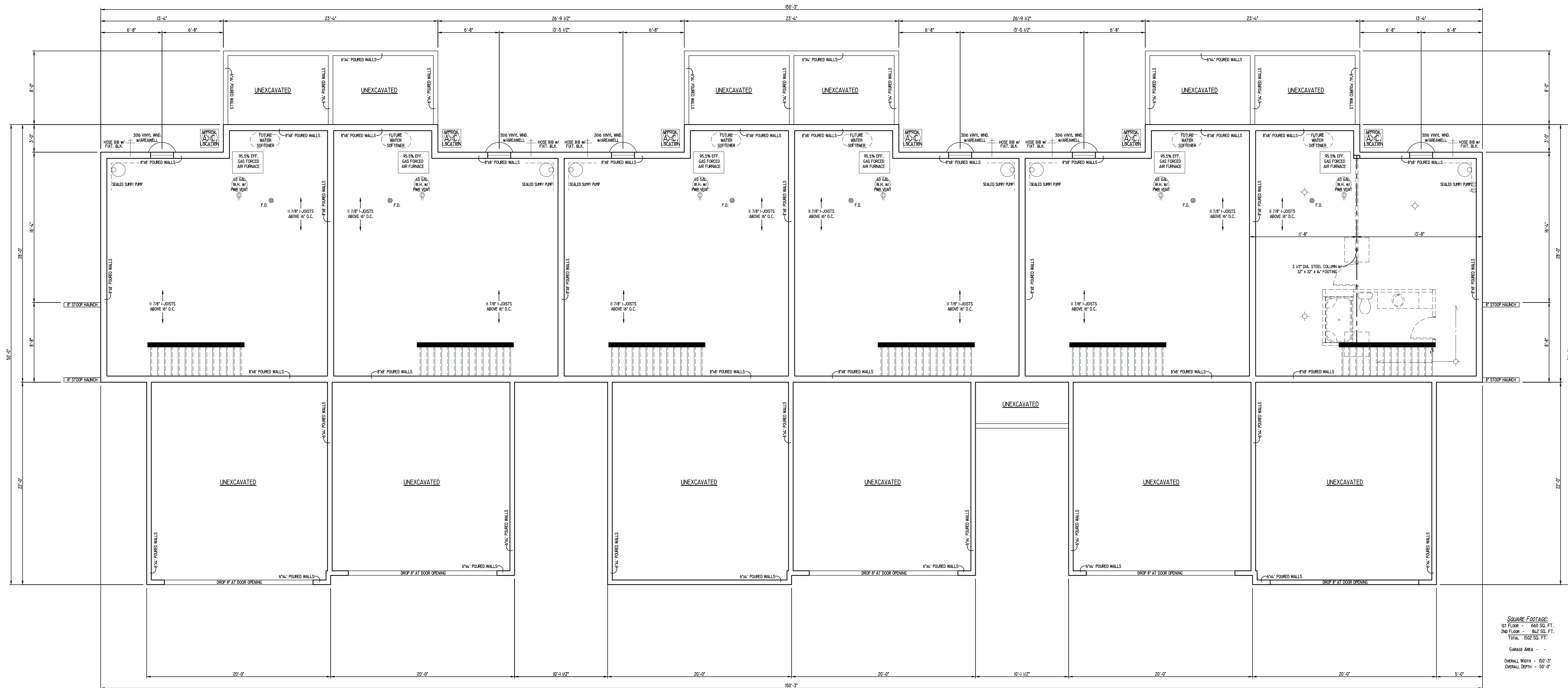
**PRAIRIE SONG COURTYARDS - 6-UNIT BUILDING - 1ST FLOOR PLAN
 FRONT ENTRY GARAGE
 8/7/19**



SQUARE FOOTAGE:
 1ST FLOOR - 660 SQ. FT.
 2ND FLOOR - 842 SQ. FT.
 TOTAL - 1502 SQ. FT.
 GARAGE AREA - -
 OVERALL WIDTH - 150'-3"
 OVERALL DEPTH - 50'-0"

PRAIRIE SONG COURTYARDS - 6-UNIT BUILDING - 2ND FLOOR PLAN

8/7/19



SQUARE FOOTAGE:
 1ST FLOOR - 660 SQ. FT.
 2ND FLOOR - 842 SQ. FT.
 TOTAL - 1502 SQ. FT.
 GARAGE AREA - -
 OVERALL WIDTH - 150'-3"
 OVERALL DEPTH - 50'-0"

PRAIRIE SONG COURTYARDS - 6-UNIT BUILDING - FOUNDATION PLAN
FRONT ENTRY GARAGE
8/7/19

