

Vinyl

**STRECH - 136 LF Total**

Line Post Spacing: 10'

Rail / TW: SS20, 1-5/8, Swedged

Rail Locations:  Top Middle  Bottom

Tension Wire: Top Bottom

Vinyl

Fabric: 9-2 KK

Bracing: None

Line Post Tops: Loop

Terminal Post Tops: Dome

**POST**

8 Line Posts: 2 / 120

0 Line Posts: 2 / 120

4 Gate Posts: 3 / 132

6 Corner Posts: 3 / 132

Driven: 48

Driven: 48

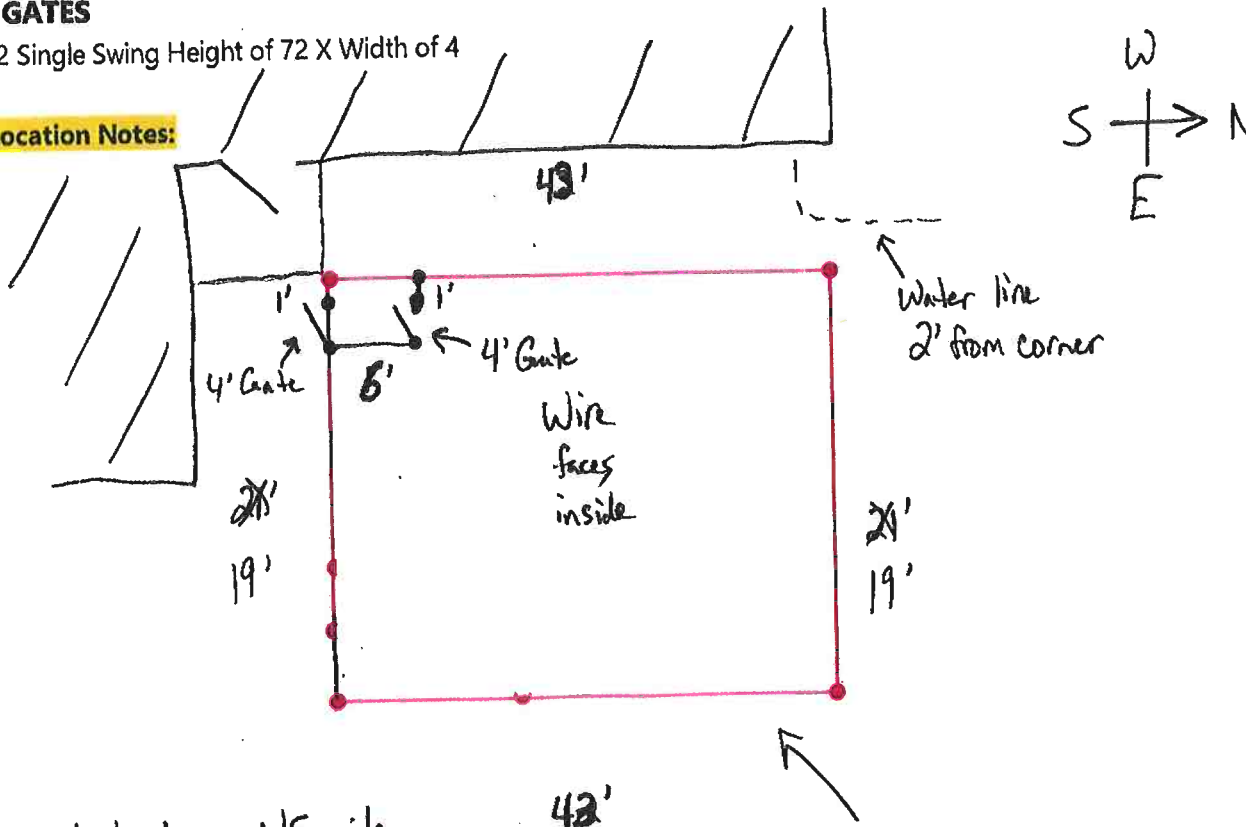
Driven: 60

Driven: 60

**GATES**

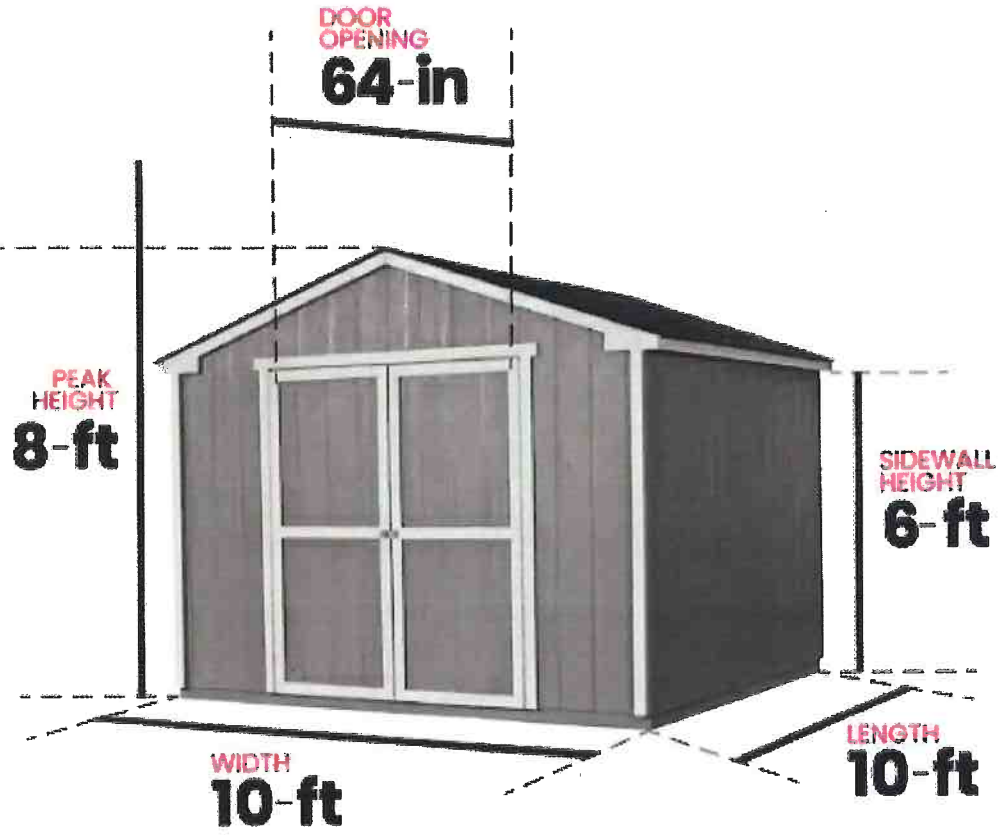
2 Single Swing Height of 72 X Width of 4

**Location Notes:**



Northview Rd. (County Rd. FT)

- Work is on NE side of building
- Not good equipment access from parking lot



# Quote

Century Fence Company  
1300 Hickory St.  
Pewaukee, WI 53072



<b>Quote To:</b>	<b>Project Location:</b>	Quote #: 12966
HAWS	HAWS	Quote Date: 9/30/2022
701 NORTHVIEW RD	701 NORTHVIEW RD	
WAUKESHA, WI 53188	WAUKESHA, WI 53188	

**Description**

**30' x 30' Dog Run**

120' of 6' high, galvanized chain link fence with 1 5/8" top and bottom rail. Chain link fabric, galvanized 9 gauge wire, 2" mesh. Line posts 2" OD, SS40, galvanized, steel pipe, spaced 10' on center, driven 4'.

- 4 - 3" OD, SS40, galvanized, steel pipe, corner posts.
- 2 - 3" OD, SS40, galvanized, steel pipe, gate posts.

Terminal posts driven 5'.

- 1 - 6' high x 4' wide single swing gate. Gate frame constructed from 2" steel pipe, welded at all corners.

**Material & Labor: \$6,790.00**

**2 Gate Entrance: \$9,130.00**

**Black Chain Link: \$9,180.00**

**Black with 2 gates: \$11,990.00** ✓

**126' x 153' Dog Run**

578' of 6' high, galvanized chain link fence with 1 5/8" top and bottom rail. Chain link fabric, galvanized 9 gauge wire, 2" mesh. Line posts 2" OD, SS40, galvanized, steel pipe, spaced 10' on center, driven 4'.

- 5 - 3" OD, SS40, galvanized, steel pipe, corner posts.
- 4 - 3" OD, SS40, galvanized, steel pipe, gate posts.

Terminal posts driven 5'.

- 2 - 6' high x 4' wide single swing gates. Gate frames constructed from 2" steel pipe, welded at all corners.

**Material & Labor: \$24,110.00**

**Black Chain Link: \$31,650.00**

**Lower Existing Fence**

Drive down 100' of existing 6' high fence.

**Material & Labor: \$990.00(with other work)** ✓



Quote

excludes: permit, private underground utility locate, rock conditions, underground obstructions

Quote Valid For 15 days

**Buyer's Signature:** \_\_\_\_\_ **Date:** \_\_\_\_\_ **Submitted by:** Tom Foerster

**Acceptance:** This quote when accepted in writing by purchaser and by Century Fence Company becomes a contract between two parties. The conditions on the attached 'Terms and Conditions' are made a part of this contract.

Tom Foerster  
Office: 262-956-8429  
Cell: 262-993-5516  
Email: TFoerster@centuryfence.com

**Terms of Payment:** Net Cash upon receipt of invoice.