



The play components identified on this plan are IPEMA certified. (Unless model number is preceded with \*) The use and layout of these components conform to the requirements of ASTM F1487. To verify product certification, visit [www.ipema.org](http://www.ipema.org)

THIS PLAY AREA & PLAY EQUIPMENT IS DESIGNED FOR AGES 5-12 YEARS UNLESS OTHERWISE NOTED ON PLAN.

IT IS THE MANUFACTURER'S OPINION THAT THIS PLAY AREA DOES CONFORM TO THE A.D.A. ACCESSIBILITY STANDARDS, ASSUMING AN ACCESSIBLE PROTECTIVE SURFACING IS PROVIDED, AS INDICATED, OR WITHIN THE ENTIRE USE ZONE.

THIS CONCEPTUAL PLAN WAS BASED ON INFORMATION AVAILABLE TO US. PRIOR TO CONSTRUCTION, DETAILED SITE INFORMATION INCLUDING SITE DIMENSIONS, TOPOGRAPHY, EXISTING UTILITIES, SOIL CONDITIONS, AND DRAINAGE SOLUTIONS SHOULD BE OBTAINED, EVALUATED, & UTILIZED IN THE FINAL DESIGN. PLEASE VERIFY ALL DIMENSIONS OF PLAY AREA, SIZE, ORIENTATION, AND LOCATION OF ALL EXISTING UTILITIES, EQUIPMENT, AND SITE FURNISHINGS PRIOR TO ORDERING. SLIDES SHOULD NOT FACE THE HOT AFTERNOON SUN.

CHOOSE A PROTECTIVE SURFACING MATERIAL THAT HAS A CRITICAL HEIGHT VALUE TO MEET THE MAXIMUM FALL HEIGHT FOR THE EQUIPMENT (REF. ASTM F1487 STANDARD CONSUMER SAFETY PERFORMANCE SPECIFICATION FOR PLAYGROUND EQUIPMENT FOR PUBLIC USE, SECTION 8 CURRENT REVISION). THE SUBSURFACE MUST BE WELL DRAINED. IF THE SOIL DOES NOT DRAIN NATURALLY IT MUST BE TILED OR SLOPED 1/8" TO 1/4" PER FOOT TO A STORM SEWER OR A "FRENCH DRAIN".

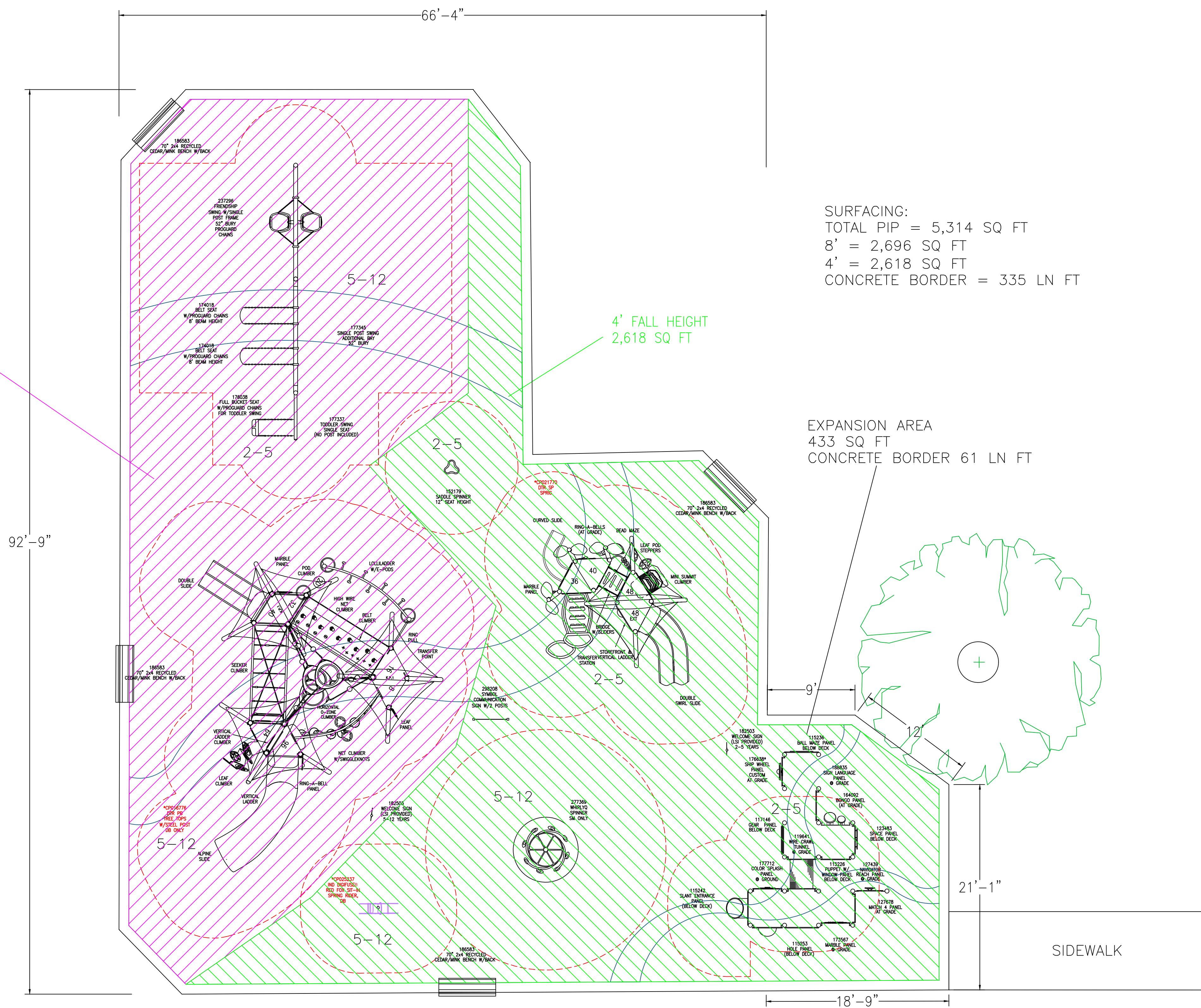
AREA OF ACCESSIBLE/PROTECTIVE SURFACING (POURED-IN-PLACE SUGGESTED) 5,314 SQ FT

IT IS THE MANUFACTURER'S OPINION AND INTENT THAT THE LAYOUT OF THESE COMPONENTS CONFORM WITH THE U.S. CONSUMER PRODUCT SAFETY COMMISSION'S (CPSC) "HANDBOOK FOR PUBLIC PLAYGROUND SAFETY".

DESIGNED BY: KLP

COPYRIGHT: 3/6/24  
LANDSCAPE STRUCTURES, INC.  
601 7th STREET SOUTH - P.O. BOX 198  
DELAND, MINNESOTA 55328  
PH: 1-800-328-0035 FAX: 1-763-972-6091

2/7/24	1181967-01-03	KLP
1/10/2024	1181967-01-01	KP
Date	Previous Drawing #	Initials



SURFACING:  
TOTAL PIP = 5,314 SQ FT  
8' = 2,696 SQ FT  
4' = 2,618 SQ FT  
CONCRETE BORDER = 335 LN FT

EXPANSION AREA  
433 SQ FT  
CONCRETE BORDER 61 LN FT

8' FALL HEIGHT  
2,696 SQ FT

4' FALL HEIGHT  
2,618 SQ FT

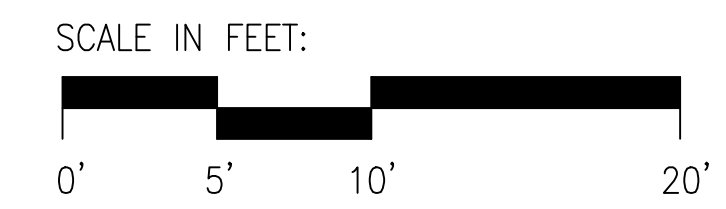
Freestanding Play (2-12 years)  
PlayBooster (5-12 years) Max Fall Height: 96 inches  
PlayBooster and Smart Play (2-5 years) Max Fall Height: 48 inches

5-12 YEARS

TOTAL ELEVATED PLAY COMPONENTS	10			
TOTAL ELEVATED COMPONENTS ACCESSIBLE BY RAMP	0	REQUIRED	0	
TOTAL ELEVATED COMPONENTS ACCESSIBLE BY TRANSFER	5	REQUIRED	5	
TOTAL ACCESSIBLE GROUND LEVEL COMPONENTS SHOWN	11	REQUIRED	3	
TOTAL DIFFERENT TYPES OF GROUND LEVEL COMPONENTS	7	REQUIRED	7	

2-5 YEARS

TOTAL ELEVATED PLAY COMPONENTS	7			
TOTAL ELEVATED COMPONENTS ACCESSIBLE BY RAMP	0	REQUIRED	0	
TOTAL ELEVATED COMPONENTS ACCESSIBLE BY TRANSFER	7	REQUIRED	4	
TOTAL ACCESSIBLE GROUND LEVEL COMPONENTS SHOWN	15	REQUIRED	2	
TOTAL DIFFERENT TYPES OF GROUND LEVEL COMPONENTS	15	REQUIRED	15	



Bethesda Park  
Waukesha, WI

Gerber Leisure Products, Inc.  
Meghan Barrett

SYSTEM TYPE:  
Smart Play  
DRAWING #:  
1181967-01-03

