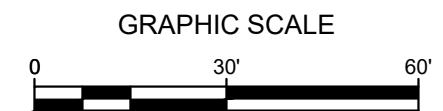




THE SIGMA GROUP
 Single Source. Sound Solutions.
 www.thesigmagroup.com
 1300 West Canal Street
 Milwaukee, WI 53233
 Phone: 414-643-4200
 Fax: 414-643-4210

SITE SURVEY



LEGEND

●	INDICATES FOUND 1" IRON PIPE	☐	TELEPHONE PEDESTAL
○	INDICATES SET 1" IRON PIPE	☐	CABLE PEDESTAL
+	INDICATES FOUND CHISELED CROSS	☐	CONTROL BOX
⊕	SANITARY MANHOLE	☐	FIBER OPTIC SIGN
⬇	SANITARY CLEANOUT OR VENT	⊕	TRAFFIC LIGHT
⊕	M.I.S. MANHOLE	⊕	COMMUNICATION MANHOLE
⊕	UNKNOWN MANHOLE	○	BOLLARD
⊕	STORM MANHOLE	+	SOIL BORING/MONITORING WELL
⊕	INLET (ROUND)	+	WATER SURFACE
⊕	INLET (SQUARE)	+	WETLANDS FLAG
⊕	CURB INLET	+	MARSH
⊕	STORM SEWER END SECTION	+	FLAGPOLE
⊕	GAS VALVE	+	PARKING METER
⊕	GAS METER	+	SIGN
⊕	WATER VALVE	+	MAILBOX
⊕	HYDRANT	+	RAILROAD CROSSING SIGNAL
⊕	WATER MANHOLE	+	HANDICAP SPACE
⊕	WATER SERVICE CURB STOP	+	CONFEROUS TREE
⊕	WELL HEAD	+	DECIDUOUS TREE
⊕	STAND PIPE	—	SANITARY SEWER
⊕	WALL INDICATOR VALVE	—	STORM SEWER
⊕	POST INDICATOR VALVE	—	WATERLINE
⊕	LIGHT POLE	—	MARKED GAS MAIN
⊕	SPOT/YARD LIGHT	—	MARKED ELECTRIC
⊕	UTILITY POLE	—	MARKED OVERHEAD WIRES
⊕	GUY POLE	—	MARKED TELEPHONE
⊕	GUY WIRE	—	MARKED CABLE TV LINE
⊕	ELECTRIC MANHOLE	—	MARKED FIBER OPTIC
⊕	ELECTRIC PEDESTAL	—	FENCE
⊕	ELECTRIC METER		
⊕	TELEPHONE MANHOLE		

GENERAL NOTES:

1. THE UNDERGROUND UTILITY INFORMATION SHOWN ON THIS DRAWING IS BASED ON FIELD LOCATIONS AND/OR RECORDS FURNISHED BY MUNICIPALITIES AND UTILITY COMPANIES. THE LOCATION AND ACCURACY OF WHICH CANNOT BE GUARANTEED. THERE MAY BE ADDITIONAL UNDERGROUND UTILITY INSTALLATIONS WITHIN THE PROJECT AREA THAT ARE NOT SHOWN.
2. VERIFY ACTUAL LOCATIONS AND INVERTS IN THE FIELD. ANY POTENTIAL ERRORS, OMISSIONS, OR DISCREPANCIES SHALL BE BROUGHT TO THE ATTENTION OF THE ENGINEER PRIOR TO PROCEEDING WITH CONSTRUCTION.
3. DRAWING IS BASED ON FIELD SURVEY COMPLETED BY CHAPUT LAND SURVEYORS, LLC ON MAY 8, 2017.
4. DATUM FOR THE PROJECT SURVEY IS NGVD OF 1929. BENCHMARK FOR THE PROJECT SURVEY IS 849.85.

PROJECT:
BEAUDRY SERVICES, INC.

OWNER:
BEAUDRY SERVICES, INC.
1522 Pearl St.
Waukesha, WI 53186

ARCHITECT:
KORB AND ASSOCIATES ARCHITECTS
648 N. Plankinton Ave.
Suite 240
Milwaukee, WI 53203

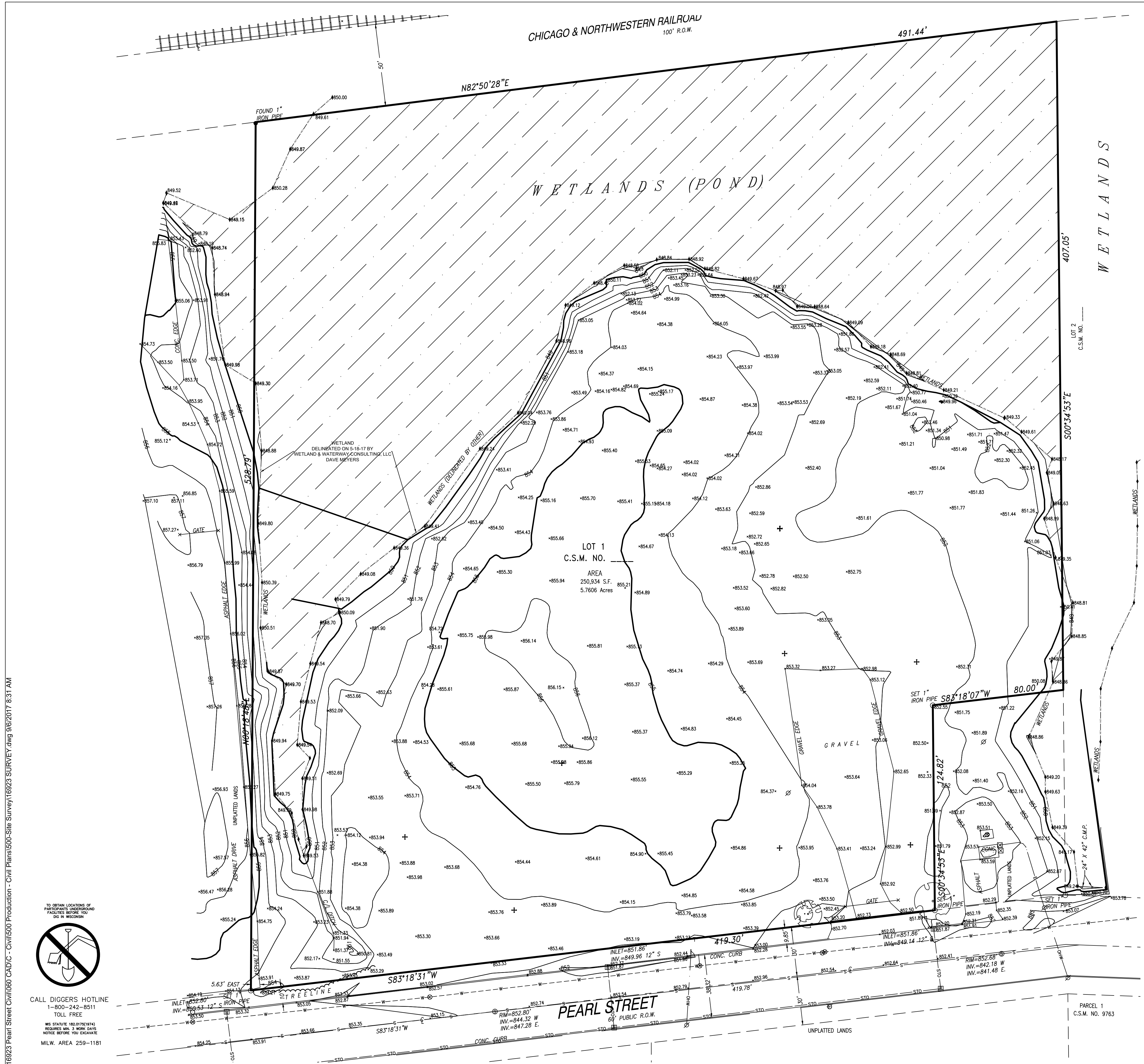
CONSTRUCTION MANAGER:
CONSTRUCTION MANAGER

CIVIL ENGINEER:
THE SIGMA GROUP

REVISION NO.	DATE

COMM NO: 17007-01
 SCALE: AS NOTED
 PHASE: SCHEMATIC DESIGN
 DATE: 3/21/2017

C 001



File: I:\Korb\16923 Pearl Street\Civil\16923 Site Survey\16923 SURVEY.dwg 9/6/2017 8:31 AM



CALL DIGGERS HOTLINE
 1-800-242-8511
 TOLL FREE

WE STATUTE 182.017(8)(4)
 REQUIRES MIN. 3 WORK DAYS
 NOTICE BEFORE YOU EXCAVATE
 MILW. AREA 259-1181

THE UNDERGROUND UTILITY INFORMATION SHOWN ON THIS MAP IS BASED ON FIELD MARKINGS AND INFORMATION FURNISHED BY UTILITY COMPANIES AND THE LOCAL MUNICIPALITY. WHILE THIS INFORMATION IS BELIEVED TO BE RELIABLE, ITS ACCURACY AND COMPLETENESS CANNOT BE GUARANTEED.



THE SIGMA GROUP
 Single Source. Sound Solutions.
 www.thesigmagroup.com
 1300 West Canal Street
 Milwaukee, WI 53233
 Phone: 414-643-4200
 Fax: 414-643-4210

SITE PREP AND EROSION CONTROL PLAN

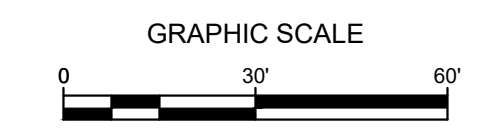
PROJECT:
BEAUDRY SERVICES, INC.

OWNER:
BEAUDRY SERVICES, INC.
1522 Pearl St.
Waukesha, WI 53186

ARCHITECT:
KORB AND ASSOCIATES ARCHITECTS
648 N. Plankinton Ave.
Suite 240
Milwaukee, WI 53203

CONSTRUCTION MANAGER:
CONSTRUCTION MANAGER

CIVIL ENGINEER:
THE SIGMA GROUP



- LEGEND:**
- PROPOSED SILT FENCE (A C400)
 - PROPOSED INLET PROTECTION (B C400)
 - PROPOSED TRACKING PAD (C C400)
 - EXISTING CONTOUR
 - EXISTING SPOT ELEVATION
 - PROPOSED CONTOUR
 - PROPOSED EROSION MATTING WISDOT APPROVED CLASS 1 TYPE B (D C400)
 - CURB REMOVAL
 - PAVEMENT REMOVAL
 - DIVERSION SWALE (F C402)
 - DITCH CHECK (G C402)

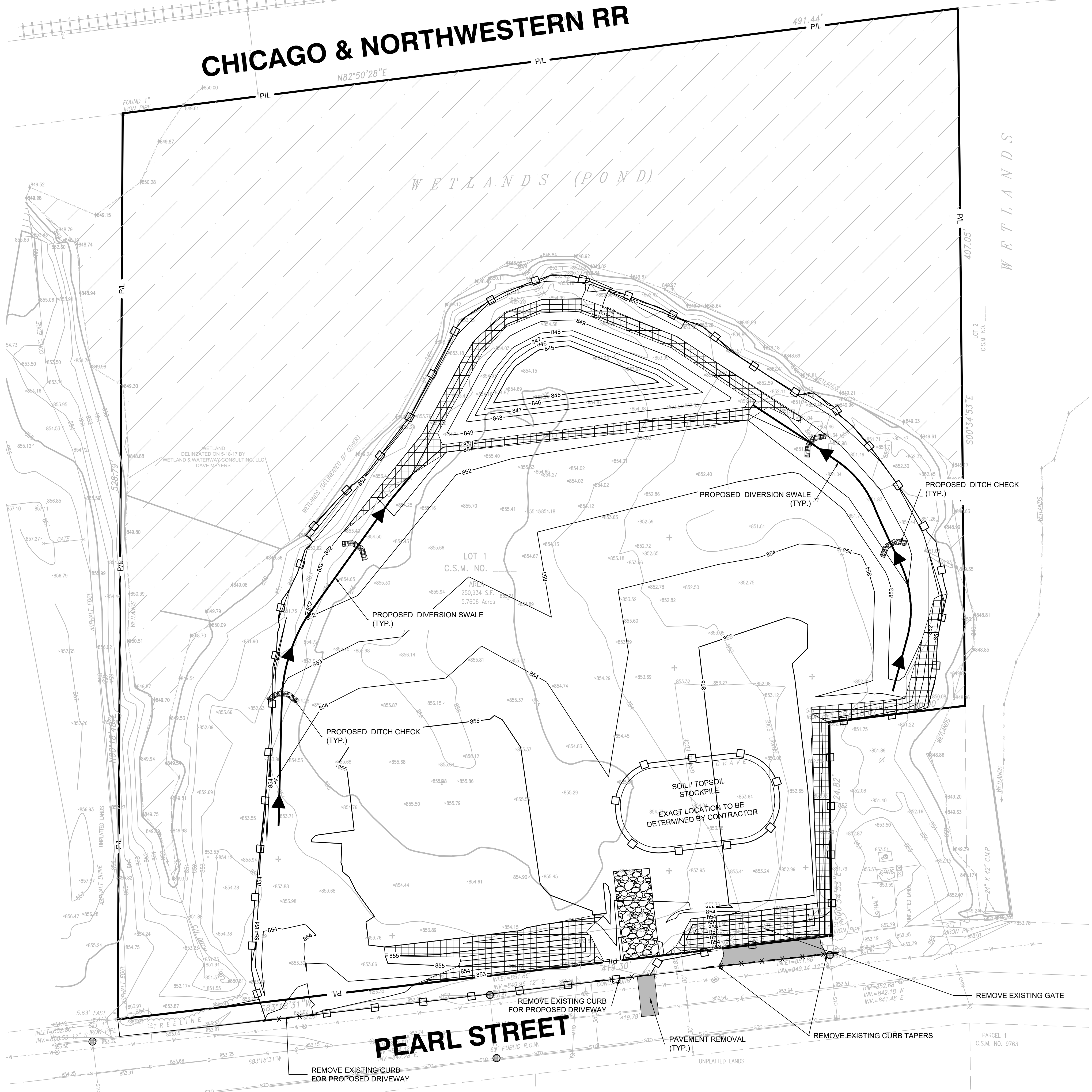
- GENERAL NOTES:**
- THE UNDERGROUND UTILITY INFORMATION SHOWN ON THIS DRAWING IS BASED ON FIELD LOCATIONS AND/OR RECORDS FURNISHED BY MUNICIPALITIES AND UTILITY COMPANIES. THE LOCATION AND ACCURACY OF WHICH CANNOT BE GUARANTEED. THERE MAY BE ADDITIONAL UNDERGROUND UTILITY INSTALLATIONS WITHIN THE PROJECT AREA THAT ARE NOT SHOWN.
 - VERIFY ACTUAL LOCATIONS AND INVERTS IN THE FIELD. ANY POTENTIAL ERRORS, OMISSIONS, OR DISCREPANCIES SHALL BE BROUGHT TO THE ATTENTION OF THE ENGINEER PRIOR TO PROCEEDING WITH CONSTRUCTION.
 - WORK TO BE COMPLETED IS INDICATED IN BOLD TYPE LINES AND EXISTING CONDITIONS ARE INDICATED BY LIGHT TYPE LINES.
 - ELECTRONIC CIVIL FILES ARE AVAILABLE UPON WRITTEN REQUEST. DO NOT USE ELECTRONIC CIVIL FILES TO LAYOUT FOUNDATIONS, COLUMN LINES, LIGHT POLES, OR OTHER NON CIVIL SITE WORK. REFER TO ARCHITECTURAL DRAWINGS FOR DIMENSIONS OF BUILDING AND ARCHITECTURAL FEATURES.
 - SEE SHEET C400 FOR A COMPLETE LIST OF EROSION CONTROL NOTES AND DETAILS. EROSION CONTROL MEASURES SHALL BE INSTALLED PRIOR TO START OF LAND DISTURBING ACTIVITIES.
 - DO NOT BEGIN LAND DISTURBING ACTIVITIES UNTIL AN EROSION CONTROL PERMIT IS OBTAINED FROM LOCAL JURISDICTION.
 - LIMITS OF FINAL CITY STREET PAVEMENT AND CURB AND GUTTER REMOVAL AND REPLACEMENTS TO BE MARKED BY CITY ENGINEERING STAFF IN FIELD

REVISION NO.	DATE

COMM NO: 17007-01
SCALE: AS NOTED
PHASE: SCHEMATIC DESIGN
DATE: 3/21/2017

C 002

CHICAGO & NORTHWESTERN RR



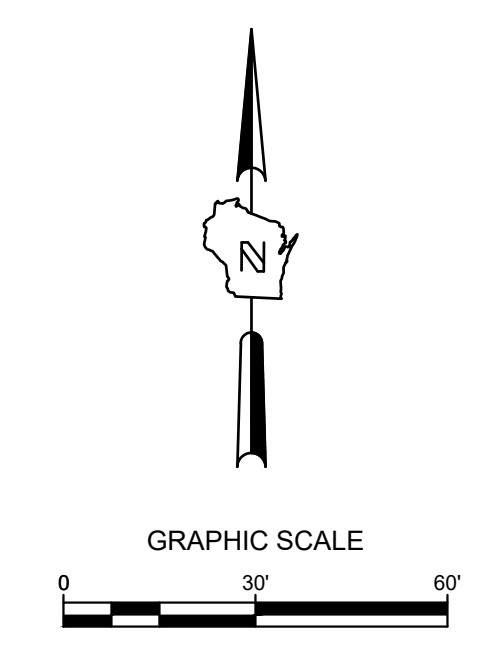
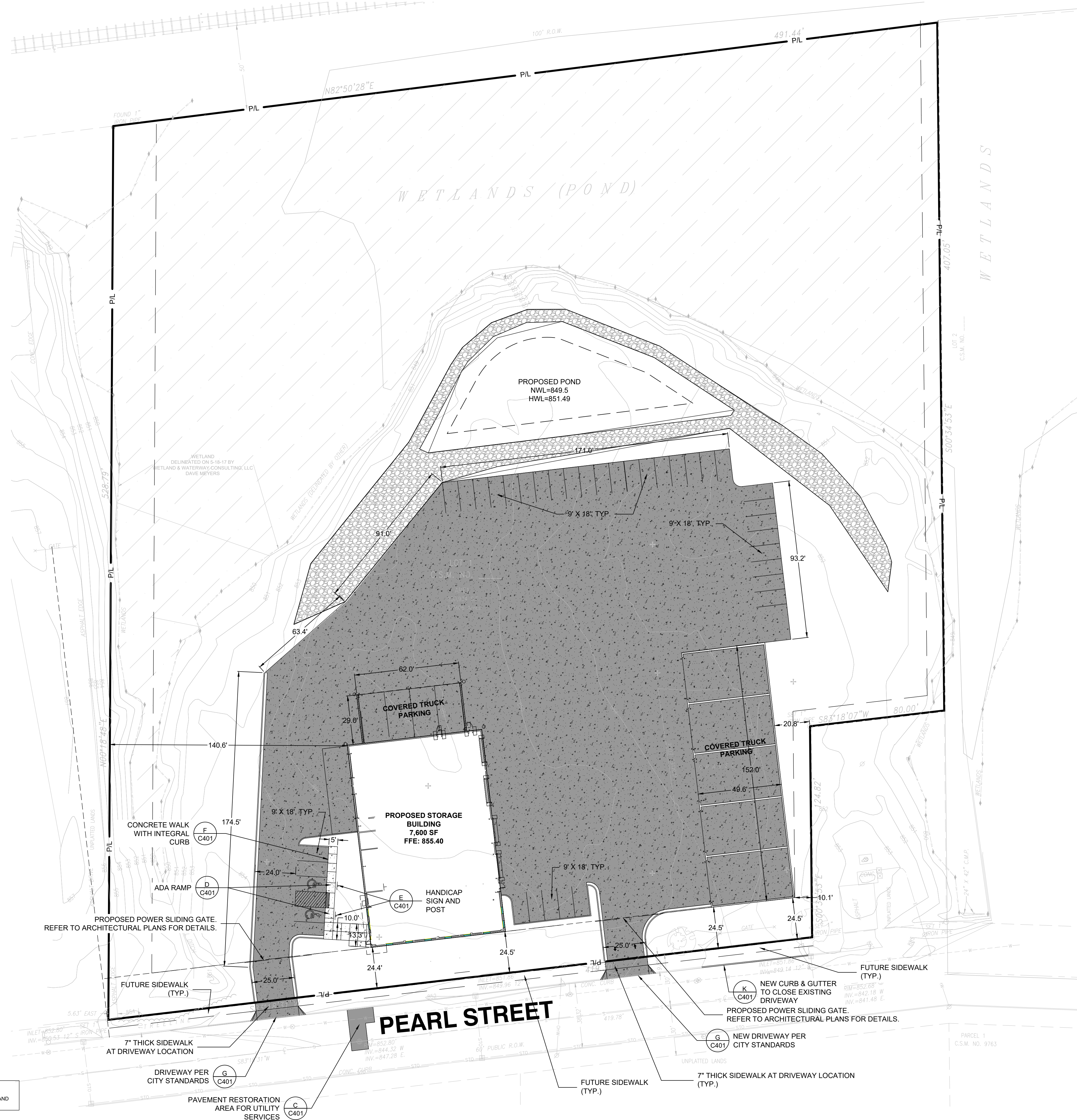
CALL DIGGERS HOTLINE
1-800-242-8511
TOLL FREE

MS STATUTE 182.07(1974)
REQUIRES MIN. 3 WORK DAYS
NOTICE BEFORE YOU EXCAVATE
MILW. AREA 259-1181

THE UNDERGROUND UTILITY INFORMATION SHOWN ON THIS MAP IS BASED ON FIELD MARKINGS AND INFORMATION FURNISHED BY UTILITY COMPANIES AND THE LOCAL MUNICIPALITY. WHILE THIS INFORMATION IS BELIEVED TO BE RELIABLE, ITS ACCURACY AND COMPLETENESS CANNOT BE GUARANTEED.

File: I:\Korbid\169223 Pearl Street\Civil\169223 PREP.dwg 9/16/2017 8:31 AM

SITE INFORMATION:
 TOTAL SITE = 5.76 AC
 TOTAL DISTURBED AREA = 2.85 AC
 EXISTING IMPERVIOUS AREA = 6421 SF (0.147 AC)
 PROPOSED IMPERVIOUS AREA = 92,132 SF (2.11 AC)



- LEGEND:**
- CONCRETE WALK (A C401)
 - CONCRETE PAVEMENT (B C401)
 - CURB & GUTTER (ACCEPT) (K C401)
 - CURB & GUTTER (REJECT) (K C401)
 - RIP RAP FOR BIRD DETERRENT

- GENERAL NOTES:**
1. THE UNDERGROUND UTILITY INFORMATION SHOWN ON THIS DRAWING IS BASED ON FIELD LOCATIONS AND/OR RECORDS FURNISHED BY MUNICIPALITIES AND UTILITY COMPANIES. THE LOCATION AND ACCURACY OF WHICH CANNOT BE GUARANTEED. THERE MAY BE ADDITIONAL UNDERGROUND UTILITY INSTALLATIONS WITHIN THE PROJECT AREA THAT ARE NOT SHOWN.
 2. VERIFY ACTUAL LOCATIONS AND INVERTS IN THE FIELD. ANY POTENTIAL ERRORS, OMISSIONS, OR DISCREPANCIES SHALL BE BROUGHT TO THE ATTENTION OF THE ENGINEER PRIOR TO PROCEEDING WITH CONSTRUCTION.
 3. WORK TO BE COMPLETED IS INDICATED IN BOLD TYPE LINES AND EXISTING CONDITIONS ARE INDICATED BY LIGHT TYPE LINES.
 4. ELECTRONIC CIVIL FILES ARE AVAILABLE UPON WRITTEN REQUEST. DO NOT USE ELECTRONIC CIVIL FILES TO LAYOUT FOUNDATIONS, COLUMN LINES, LIGHT POLES, OR OTHER NON CIVIL SITE WORK. REFER TO ARCHITECTURAL DRAWINGS FOR DIMENSIONS OF BUILDING AND ARCHITECTURAL FEATURES.
 5. DIMENSIONS ARE FROM FACE OF CURB OR EDGE OF PAVEMENT.
 6. WORK WITHIN THE PUBLIC RIGHT OF WAY, INCLUDING BUT NOT LIMITED TO DRIVEWAY OPENINGS, SIDEWALK AND RAMPS, PAVING, AND CURB AND GUTTER SHALL BE COMPLETED PER MUNICIPAL AND/OR COUNTY REQUIREMENTS AND STANDARDS.
 7. LIMITS OF FINAL CITY STREET PAVEMENT AND CURB AND GUTTER REMOVAL AND REPLACEMENTS TO BE MARKED BY CITY ENGINEERING STAFF IN FIELD

KA
 KORB + ASSOCIATES ARCHITECTS

THE SIGMA GROUP
 Single Source, Sound Solutions
 www.thesigmagroup.com
 1300 West Canal Street
 Milwaukee, WI 53233
 Phone: 414-643-4200
 Fax: 414-643-4210

SITE PLAN

PROJECT:
 BEAUDRY SERVICES, INC.

OWNER:
 BEAUDRY SERVICES, INC.
 1522 Pearl St.
 Waukesha, WI 53186

ARCHITECT:
 KORB AND ASSOCIATES ARCHITECTS
 648 N. Plankinton Ave.
 Suite 240
 Milwaukee, WI 53203

CONSTRUCTION MANAGER:
 CONSTRUCTION MANAGER

CIVIL ENGINEER:
 THE SIGMA GROUP

REVISION NO.	DATE

COMM NO: 17007-01
 SCALE: AS NOTED
 PHASE: SCHEMATIC DESIGN
 DATE: 3/21/2017

C 100

TO OBTAIN LOCATIONS OF PARTICIPANT'S UNDERGROUND FACILITIES BEFORE YOU DIG IN WISCONSIN

CALL DIGGERS HOTLINE
 1-800-242-8511
 TOLL FREE

WI STATUTE (NS/DTR/1714) REQUIRES MIN. 3 WORK DAYS NOTICE BEFORE YOU DIG DATE

MILW. AREA 259-1181

THE UNDERGROUND UTILITY INFORMATION SHOWN ON THIS MAP IS BASED ON FIELD MARKINGS AND INFORMATION FURNISHED BY UTILITY COMPANIES AND THE LOCAL MUNICIPALITY. WHILE THIS INFORMATION IS BELIEVED TO BE RELIABLE, ITS ACCURACY AND COMPLETENESS CANNOT BE GUARANTEED.

File: I:\Korb\16923 Pearl Street\Civil\16923 CAD\C - Civil\16923 Site Dimension Plan\16923 SITE.dwg 9/6/2017 8:32 AM



GRADING PLAN

- LEGEND:**
- 5' THICK CONCRETE WALK (B/C401)
 - CONCRETE PAVEMENT (C/C401)
 - CURB & GUTTER (ACCEPT) (H/C401)
 - CURB & GUTTER (REJECT) (H/C401)
 - 5' EXISTING CONTOUR
 - 5' PROPOSED CONTOUR
 - PROPOSED CURB & GUTTER SPOT GRADE
T/C: TOP OF CURB GRADE
F/L: FLOW LINE CURB GRADE
 - PROPOSED ASPHALT SPOT GRADE
 - STORM DRAINAGE PATH
 - RIP RAP FOR BIRD DETERRENT

PROJECT:
BEAUDRY SERVICES, INC.

OWNER:
BEAUDRY SERVICES, INC.
1522 Pearl St.
Waukesha, WI 53186

ARCHITECT:
KORB AND ASSOCIATES ARCHITECTS
648 N. Plankinton Ave.
Suite 240
Milwaukee, WI 53203

CONSTRUCTION MANAGER:
CONSTRUCTION MANAGER

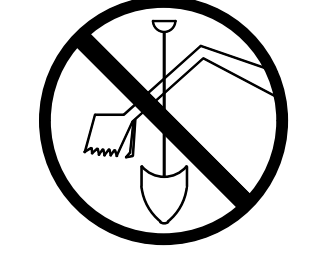
CIVIL ENGINEER:
THE SIGMA GROUP

GENERAL NOTES:

1. THE UNDERGROUND UTILITY INFORMATION SHOWN ON THIS DRAWING IS BASED ON FIELD LOCATIONS AND/OR RECORDS FURNISHED BY MUNICIPALITIES AND UTILITY COMPANIES. THE LOCATION AND ACCURACY OF WHICH CANNOT BE GUARANTEED. THERE MAY BE ADDITIONAL UNDERGROUND UTILITY INSTALLATIONS WITHIN THE PROJECT AREA THAT ARE NOT SHOWN.
2. VERIFY ACTUAL LOCATIONS AND INVERTS IN THE FIELD. ANY POTENTIAL ERRORS, OMISSIONS, OR DISCREPANCIES SHALL BE BROUGHT TO THE ATTENTION OF THE ENGINEER PRIOR TO PROCEEDING WITH CONSTRUCTION.
3. WORK TO BE COMPLETED IS INDICATED IN BOLD TYPE LINES AND EXISTING CONDITIONS ARE INDICATED BY LIGHT TYPE LINES.
4. ELECTRONIC CIVIL FILES ARE AVAILABLE UPON WRITTEN REQUEST. DO NOT USE ELECTRONIC CIVIL FILES TO LAYOUT FOUNDATIONS, COLUMN LINES, LIGHT POLES, OR OTHER NON CIVIL SITE WORK. REFER TO ARCHITECTURAL DRAWINGS FOR DIMENSIONS OF BUILDING AND ARCHITECTURAL FEATURES.
5. DIMENSIONS ARE FROM FACE OF CURB OR EDGE OF PAVEMENT.
6. WORK WITHIN THE PUBLIC RIGHT OF WAY, INCLUDING BUT NOT LIMITED TO DRIVEWAY OPENINGS, SIDEWALK AND RAMPS, PAVING, AND CURB AND GUTTER SHALL BE COMPLETED PER MUNICIPAL AND/OR COUNTY REQUIREMENTS AND STANDARDS.
7. EARTHWORK SHALL BE IN ACCORDANCE WITH GEOTECHNICAL ENGINEER'S RECOMMENDATIONS.
8. DRIVEWAY SHALL BE REPLACED PER CITY DRIVEWAY APPROACH DETAIL (SHEET C401)
9. CURB AND GUTTER SHALL BE REPLACED PER CITY CURB DETAIL (SHEET C401)

REVISION NO.	DATE

COMM NO: 17007-01
SCALE: AS NOTED
PHASE: SCHEMATIC DESIGN
DATE: 3/21/2017



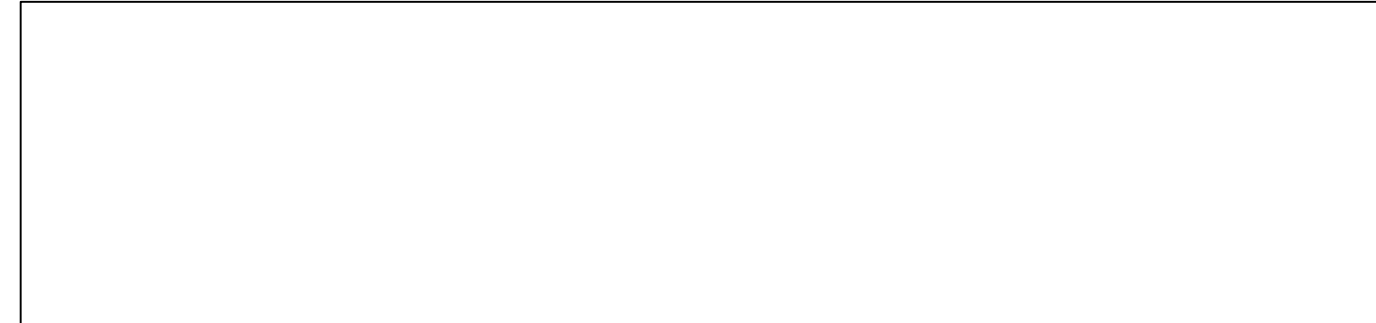
CALL DIGGERS HOTLINE
1-800-242-8511
TOLL FREE

WE STATUTE (42.07(2)(14))
REQUIRES MIN. 3 WORK DAYS
NOTICE BEFORE YOU DIG!
MILW. AREA 259-1181

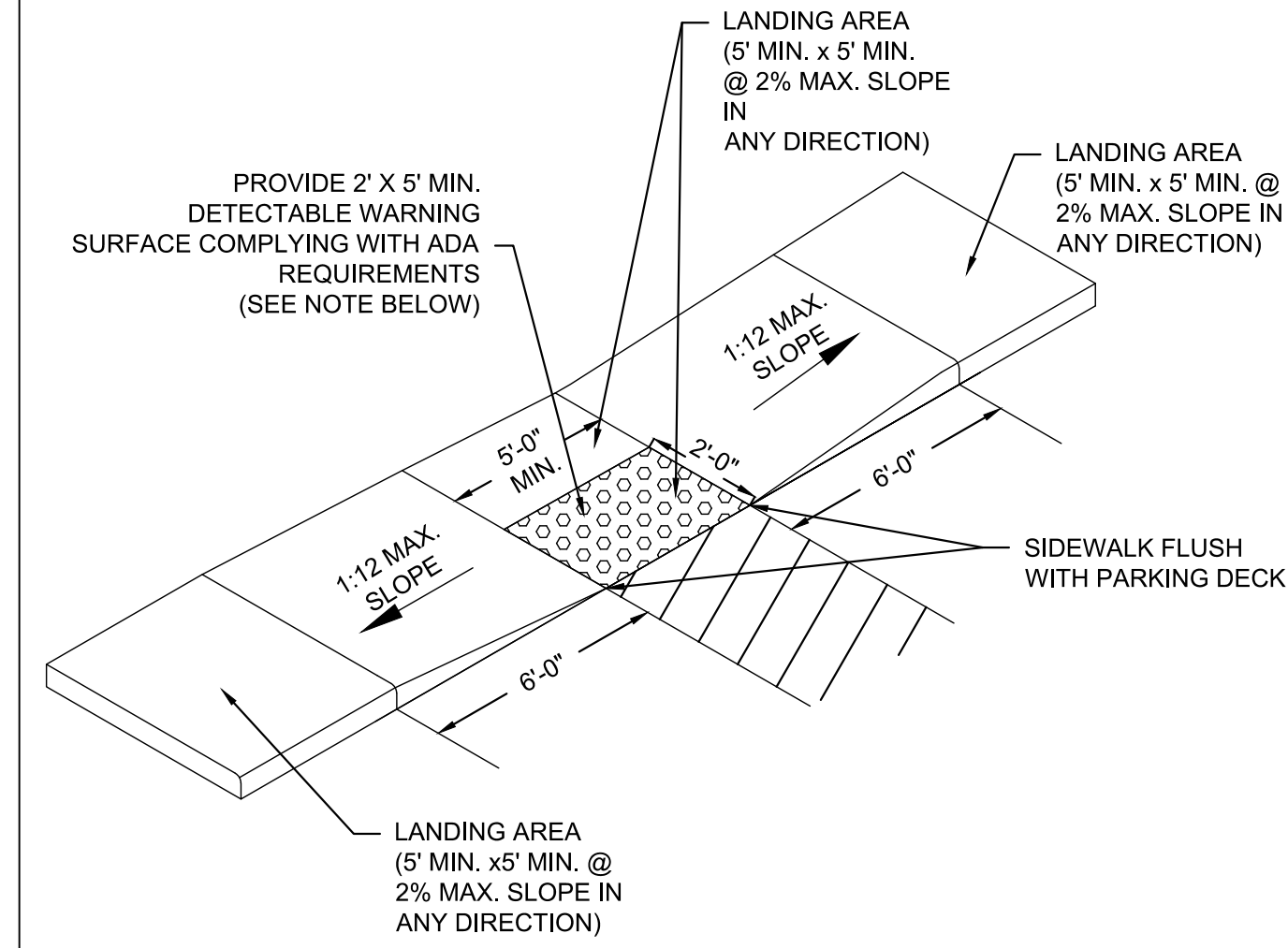
THE UNDERGROUND UTILITY INFORMATION SHOWN ON THIS MAP IS BASED ON FIELD MARKINGS AND INFORMATION FURNISHED BY UTILITY COMPANIES AND THE LOCAL MUNICIPALITY. WHILE THIS INFORMATION IS BELIEVED TO BE RELIABLE, ITS ACCURACY AND COMPLETENESS CANNOT BE GUARANTEED.

File: I:\Korb\16923 Pearl Street Civil\16923 CAD\C - Civil\16923 Grading Plan\16923 GRAD.dwg 9/16/2017 8:32 AM

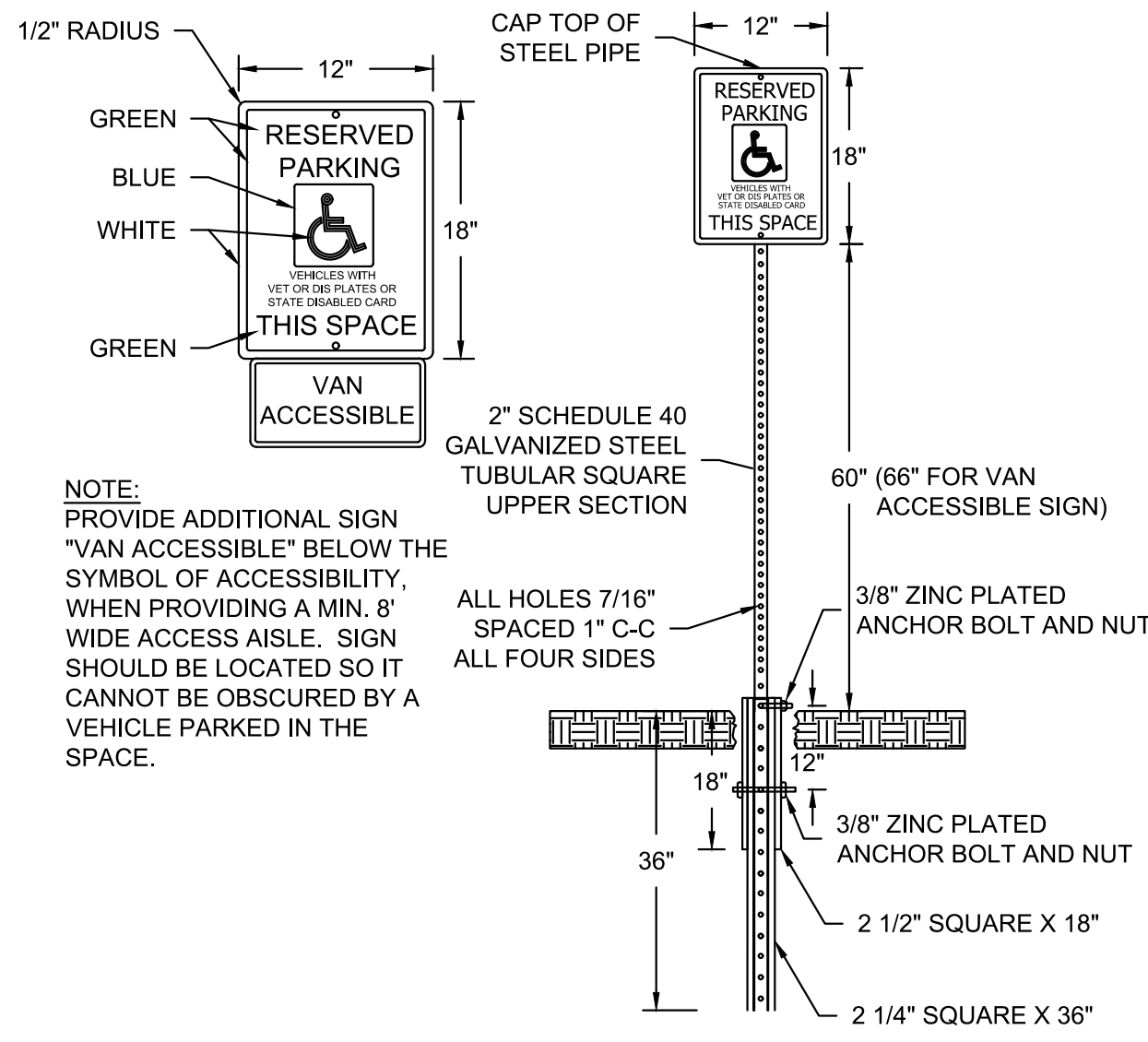
File: T:\KORR\16223 Pearl Street\Civil\1500 Production - Civil\16223 Details.dwg 9/6/2017 8:33 AM



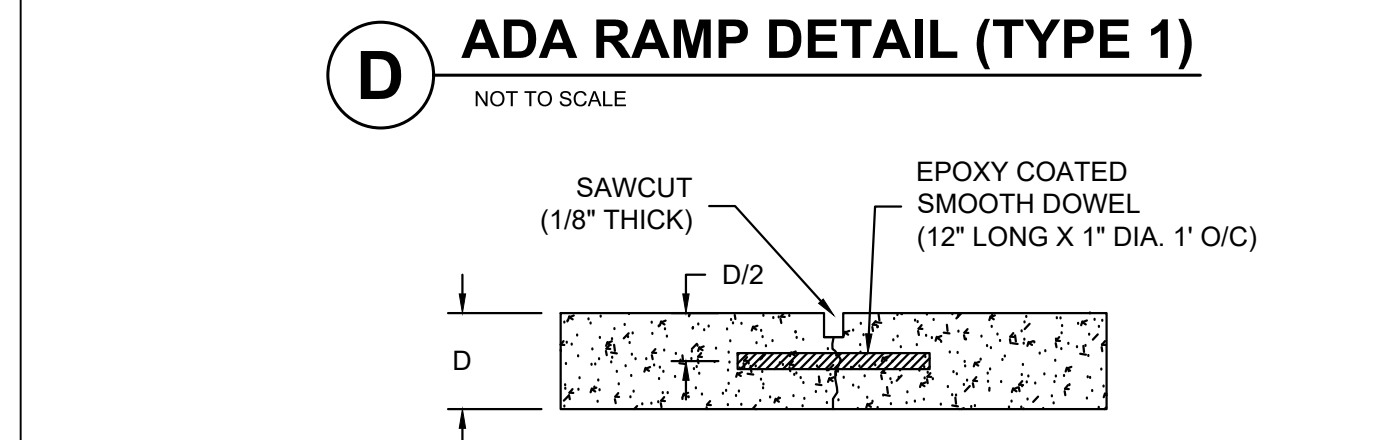
A CONCRETE SIDEWALK SECTION
NOT TO SCALE



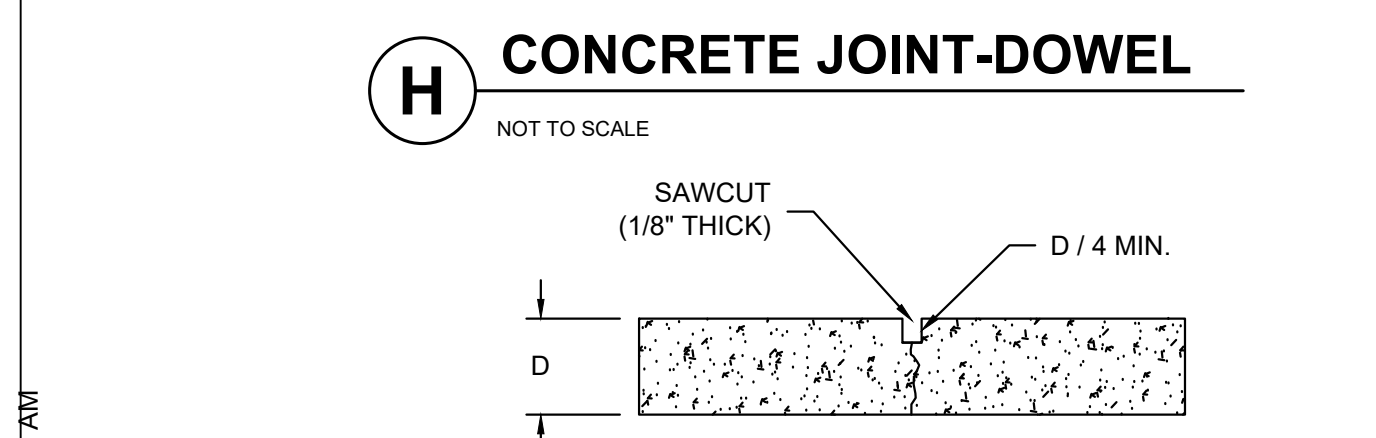
- NOTES:**
1. CONTRACTOR TO VERIFY ADA RAMP DETAIL WITH CITY AND ADJUST AS NEEDED.
 2. PROVIDE DETECTABLE WARNING CONSISTING OF RAISED TRUNCATED DOMES OF SIZE, SPACING AND CONTRAST REQUIRED BY ADA GUIDELINES.
 3. DETECTABLE WARNINGS SHALL BE PER CITY STANDARDS.



E HANDICAP SIGN & POST
NOT TO SCALE



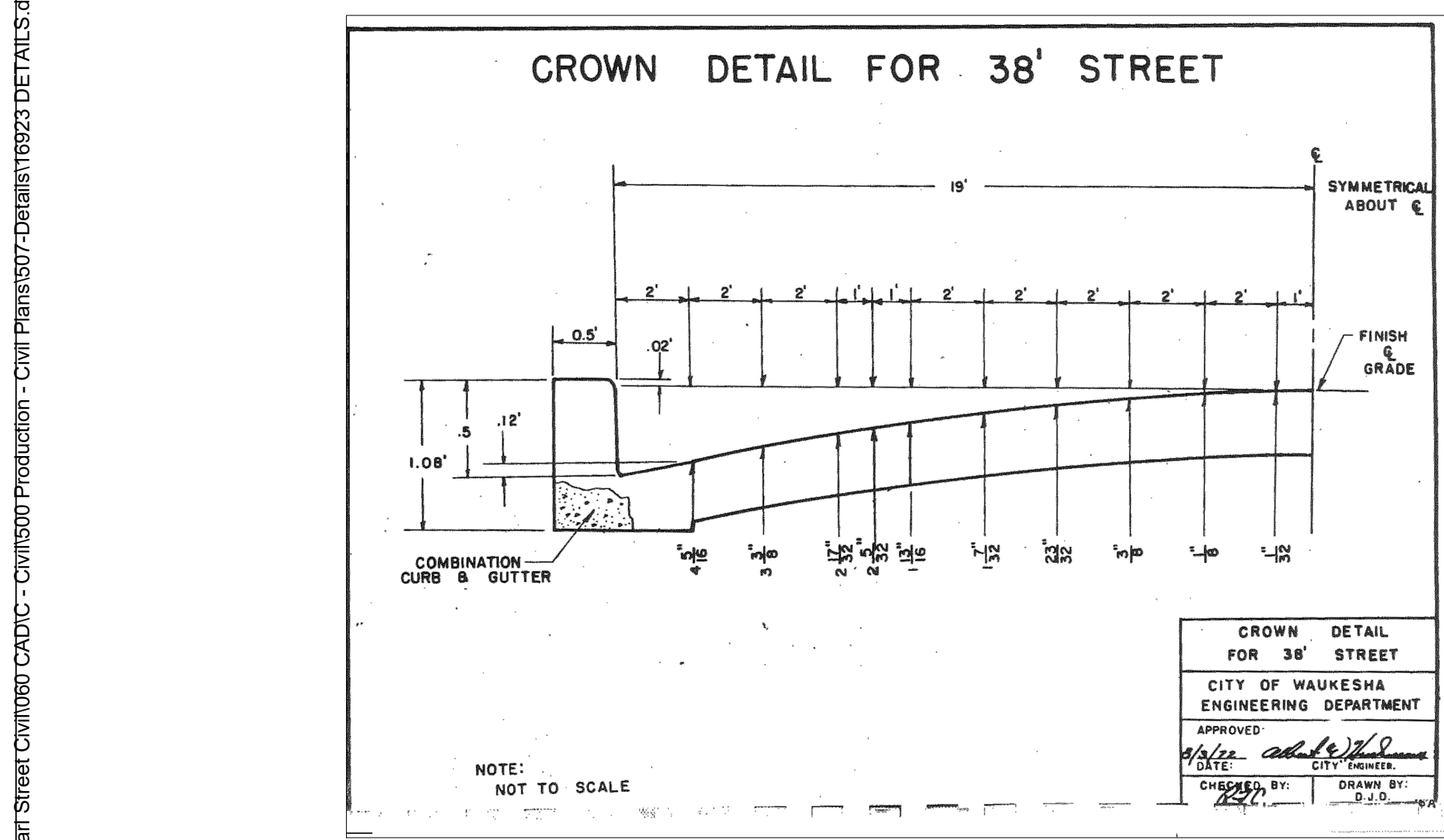
D ADA RAMP DETAIL (TYPE 1)
NOT TO SCALE



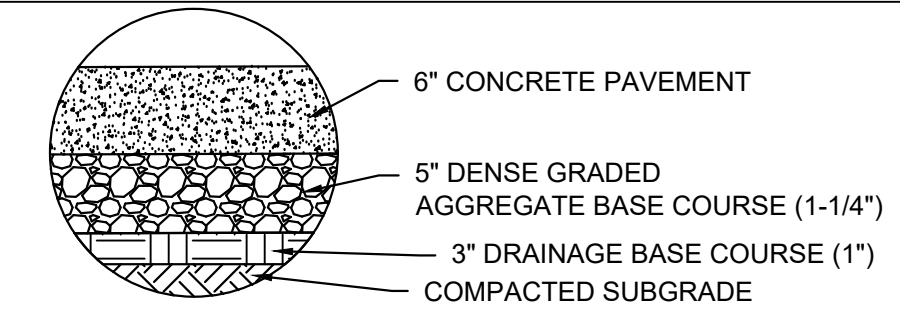
H CONCRETE JOINT-DOWEL
NOT TO SCALE



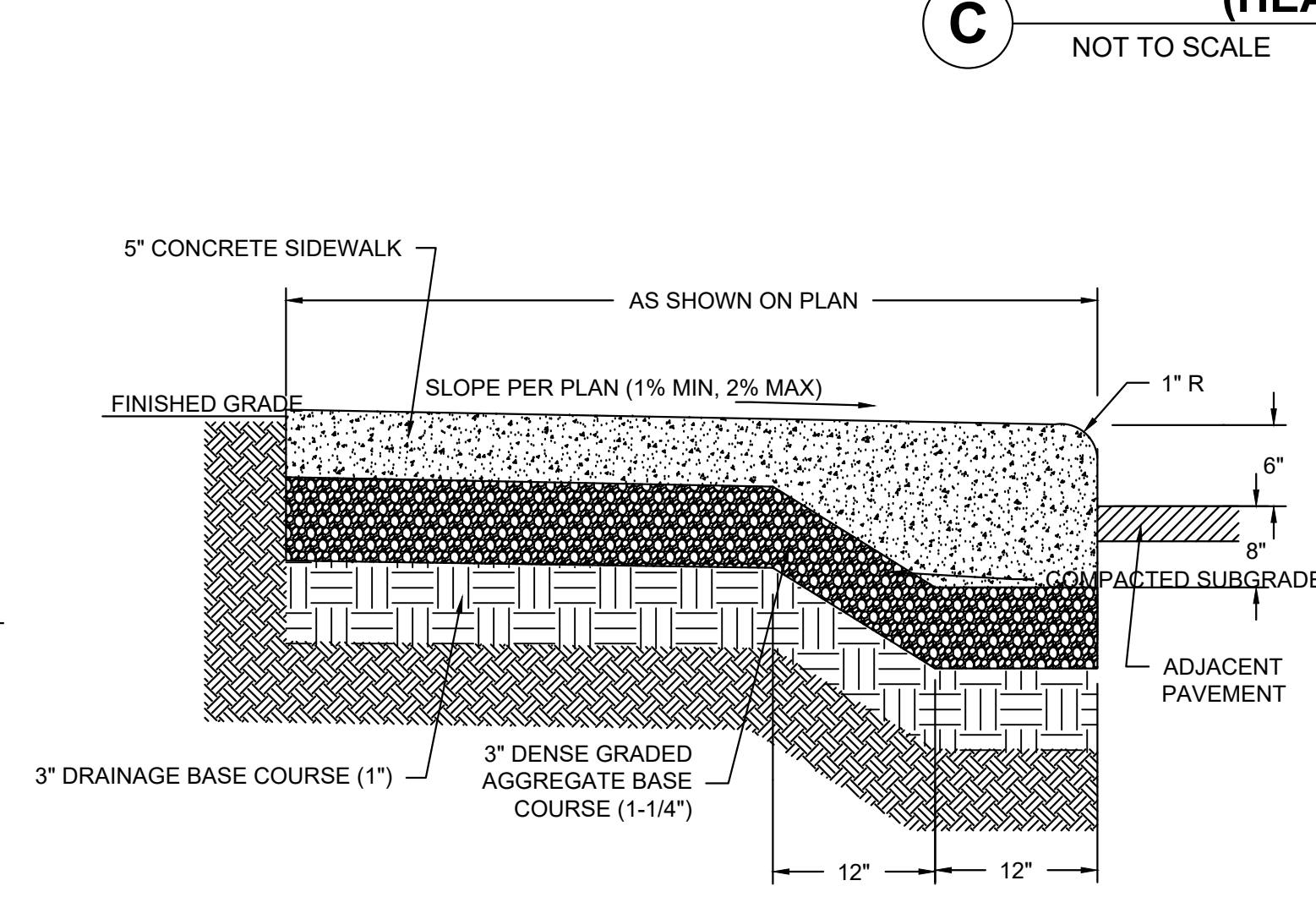
H CONCRETE JOINT-SAWCUT
NOT TO SCALE



J CITY STREET SECTION
NOT TO SCALE



B CONCRETE PAVEMENT SECTION
NOT TO SCALE



F CONCRETE WALK WITH INTEGRAL CURB
NOT TO SCALE

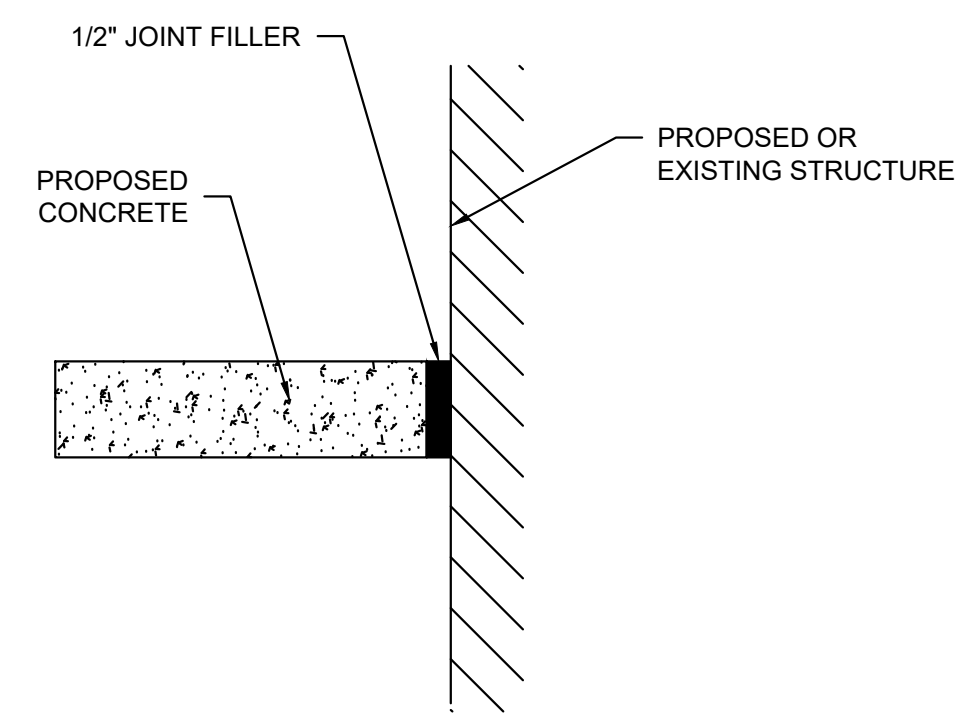
PAVEMENT DEPTH (D)	TIE BAR SIZE	TIE BAR LENGTH (L)	MAX TIE BAR SPACING
< 10 1/2"	NO. 4	30"	36"
≥ 10 1/2"	NO. 5 NO. 4*	36" 30"	36" 24"***

*SUBSTITUTE BENT BARS AT LONGITUDINAL JOINTS WHEN EQUIPMENT LIMITATIONS DURING CONSTRUCTION WARRANT (E.G. AUXILIARY LANES OR TURN LANES)

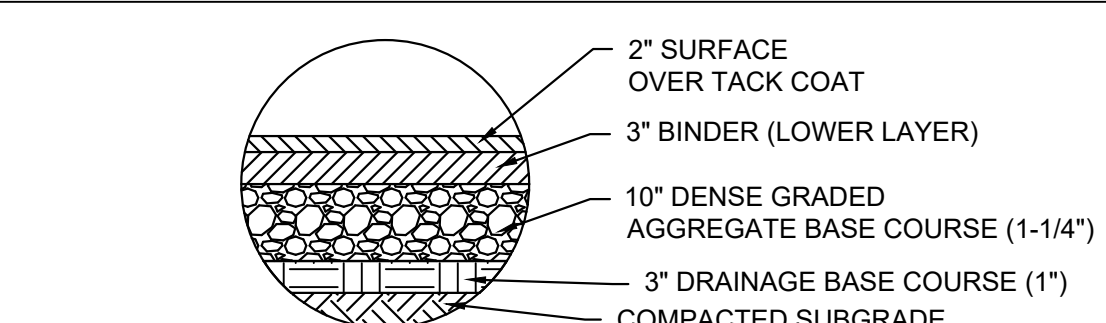
**CONFORM TO 15" MINIMUM SPACING FROM TRANSVERSE JOINTS: SPACING BETWEEN TIE BARS WILL BE 30" AT TRANSVERSE JOINTS.



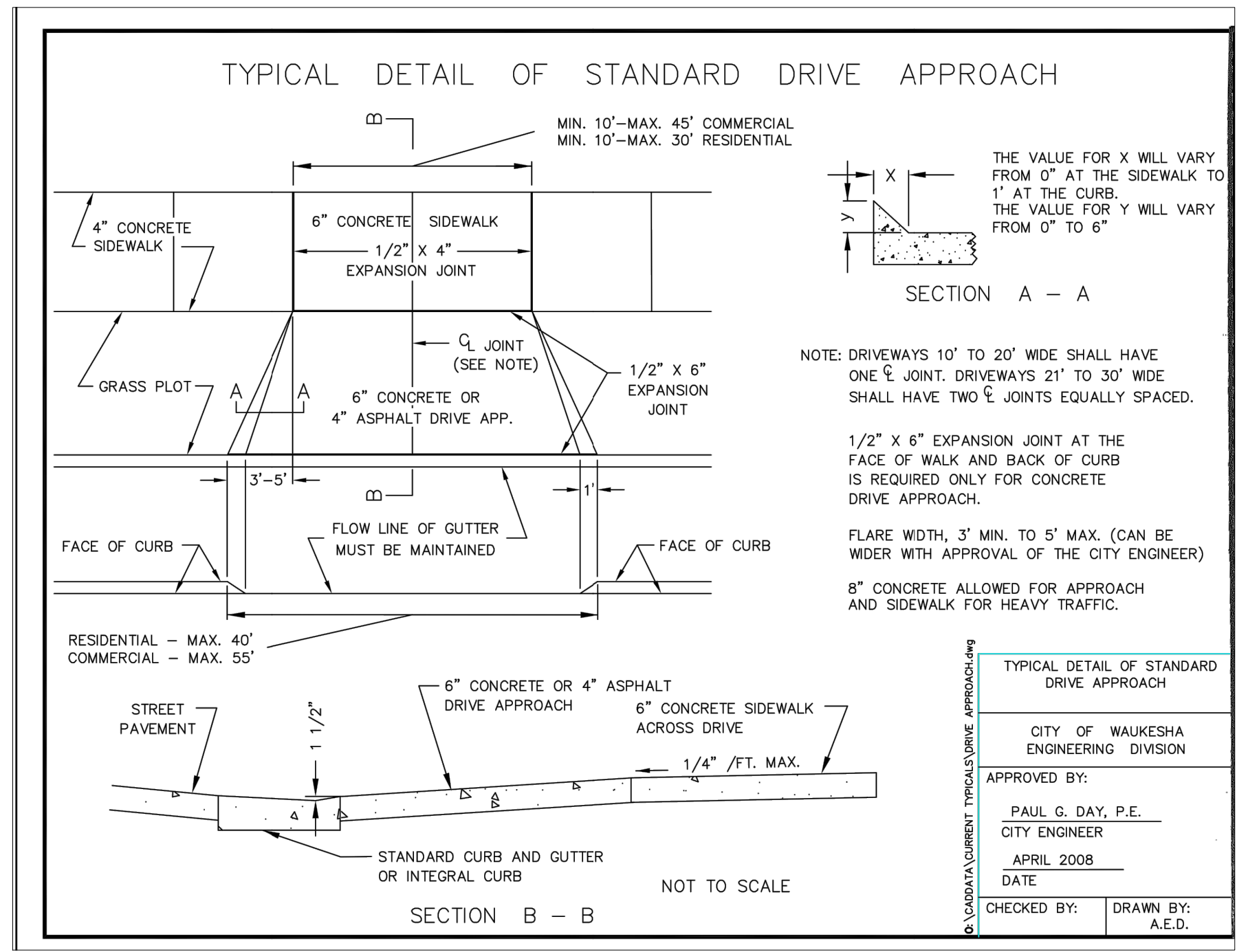
H CONCRETE JOINT-TIEBAR
NOT TO SCALE



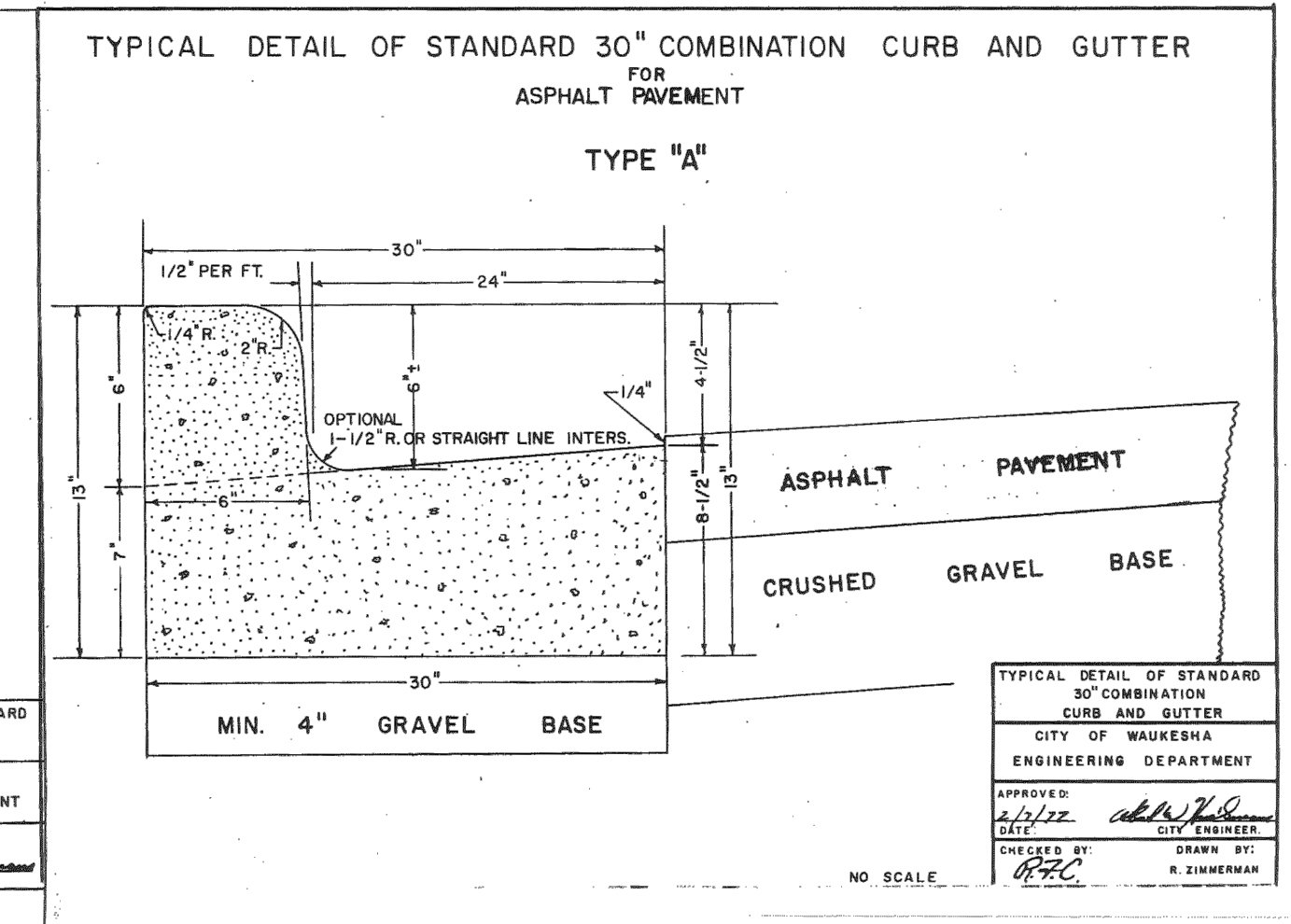
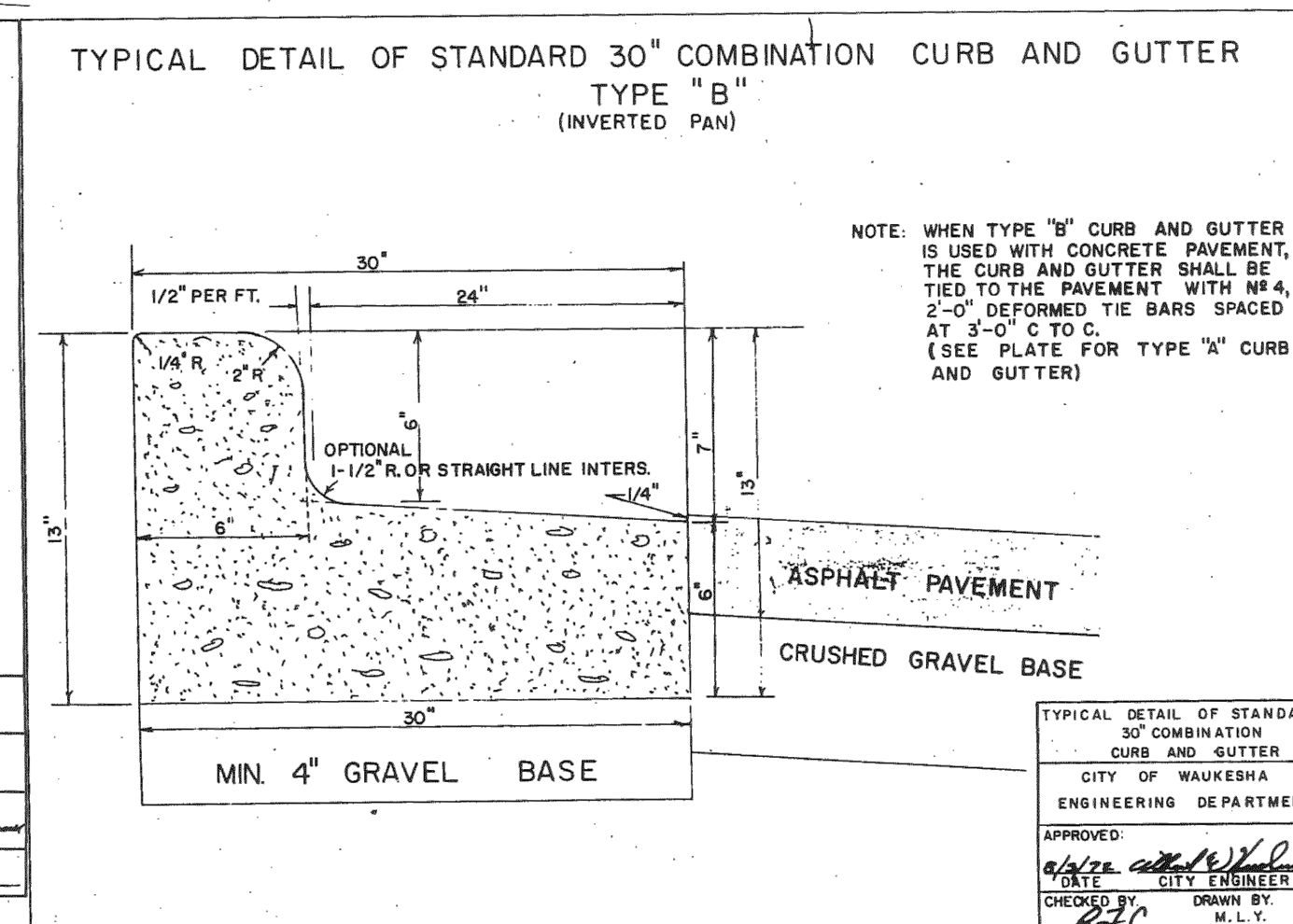
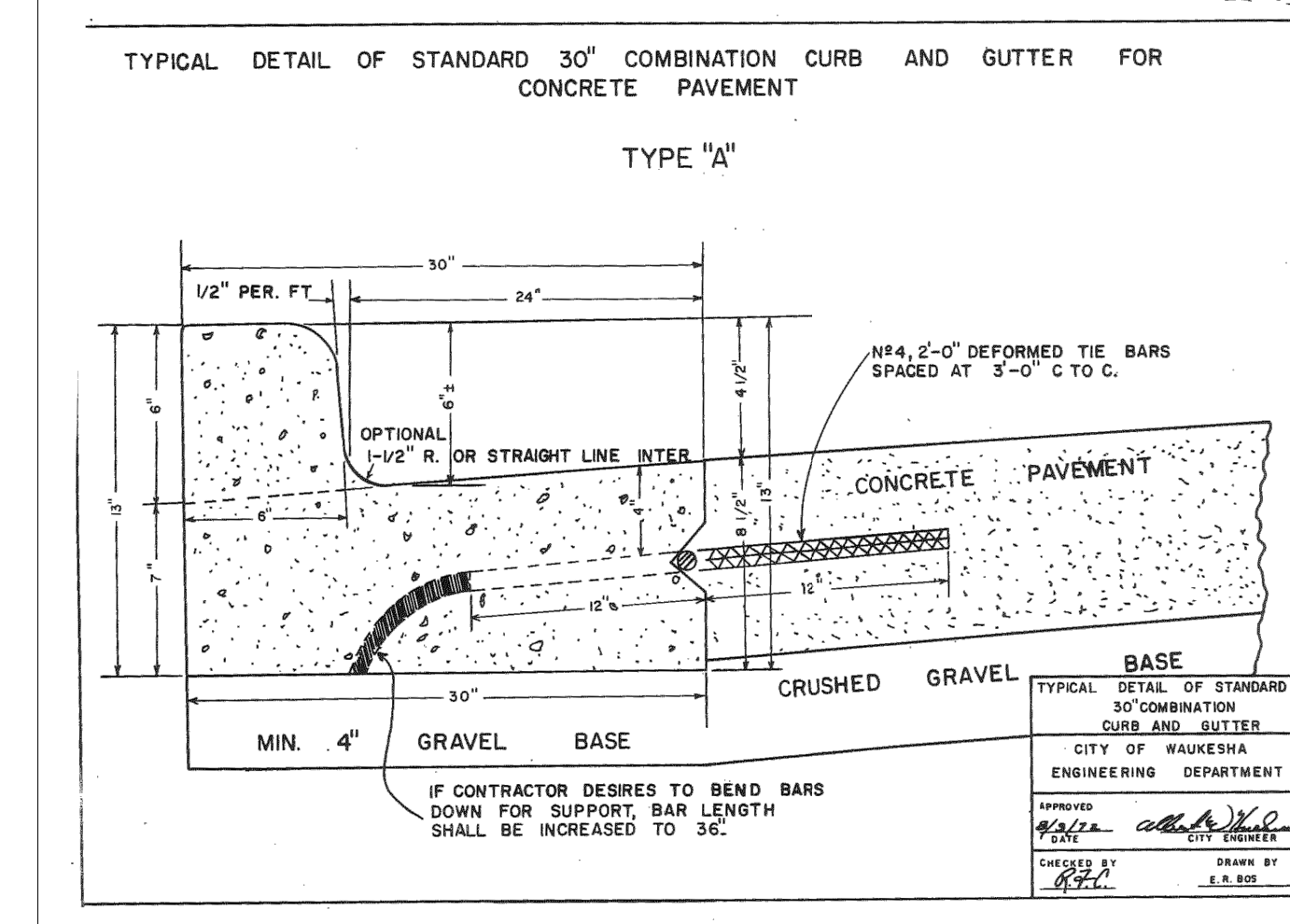
H CONCRETE JOINT-ISOLATION
NOT TO SCALE



C ASPHALT PAVEMENT SECTION (HEAVY DUTY)
NOT TO SCALE



G CITY DRIVEWAY DETAIL
NOT TO SCALE



K CURB AND GUTTER DETAILS
NOT TO SCALE

KORR + ASSOCIATES ARCHITECTS

THE SIGMA GROUP

Single Source. Sound Solutions.
www.thesigmagroup.com
1300 West Canal Street
Milwaukee, WI 53233
Phone: 414-643-4200
Fax: 414-643-4210

DETAILS

PROJECT:
BEAUDRY SERVICES, INC.

OWNER:
BEAUDRY SERVICES, INC.
1522 Pearl St.
Waukesha, WI 53186

ARCHITECT:
KORR AND ASSOCIATES ARCHITECTS
648 N. Plankinton Ave.
Suite 240
Milwaukee, WI 53203

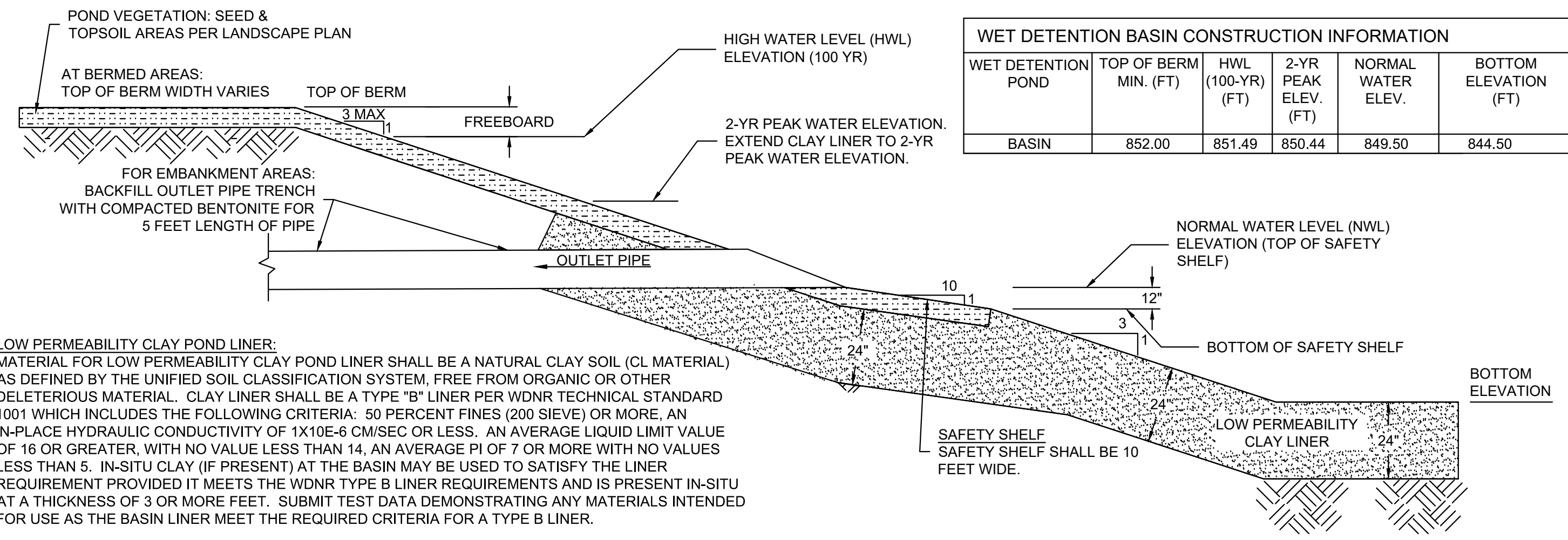
CONSTRUCTION MANAGER:
CONSTRUCTION MANAGER

CIVIL ENGINEER:
THE SIGMA GROUP

REVISION NO.	DATE

COMM NO: 17007-01
SCALE: AS NOTED
PHASE: SCHEMATIC DESIGN
DATE: 3/21/2017

DETAILS



WET DETENTION BASIN CONSTRUCTION INFORMATION					
WET DETENTION POND	TOP OF BERM MIN. (FT)	HWL (100-YR) (FT)	2-YR PEAK ELEV. (FT)	NORMAL WATER ELEV.	BOTTOM ELEVATION (FT)
BASIN	852.00	851.49	850.44	849.50	844.50

LOW PERMEABILITY CLAY POND LINER:
 MATERIAL FOR LOW PERMEABILITY CLAY POND LINER SHALL BE A NATURAL CLAY SOIL (CL MATERIAL) AS DEFINED BY THE UNIFIED SOIL CLASSIFICATION SYSTEM, FREE FROM ORGANIC OR OTHER DELETERIOUS MATERIAL. CLAY LINER SHALL BE A TYPE "B" LINER PER WDNR TECHNICAL STANDARD 1001 WHICH INCLUDES THE FOLLOWING CRITERIA: 50 PERCENT FINES (200 SIEVE) OR MORE, AN IN-PLACE HYDRAULIC CONDUCTIVITY OF 1X10⁻⁶ CM/SEC OR LESS, AN AVERAGE LIQUID LIMIT VALUE OF 16 OR GREATER, WITH NO VALUE LESS THAN 14, AN AVERAGE PI OF 7 OR MORE WITH NO VALUES LESS THAN 5. IN-SITU CLAY (IF PRESENT) AT THE BASIN MAY BE USED TO SATISFY THE LINER REQUIREMENT PROVIDED IT MEETS THE WDNR TYPE B LINER REQUIREMENTS AND IS PRESENT IN-SITU AT A THICKNESS OF 3 OR MORE FEET. SUBMIT TEST DATA DEMONSTRATING ANY MATERIALS INTENDED FOR USE AS THE BASIN LINER MEET THE REQUIRED CRITERIA FOR A TYPE B LINER.

CLAY SOURCE SHALL BE APPROVED PRIOR TO INITIATING PLACEMENT OF THE CLAY MATERIAL. SUBMIT REPRESENTATIVE MOISTURE-DENSITY DATA FOR PROPOSED CLAY MATERIAL PRIOR TO START OF WORK. IF REQUESTED, FURNISH ENGINEER WITH REPRESENTATIVE CLAY MATERIAL SAMPLES FOR TESTING.

FIELD THICKNESS AND FIELD COMPACTION OF CLAY TO BE TESTED BY OWNER'S INDEPENDENT TESTING AGENCY.

LOW PERMEABILITY CLAY/POND LINER SHALL BE PLACED USING STANDARD COMPACTION TECHNIQUES, AS PER THE STATE OF WISCONSIN DEPARTMENT OF TRANSPORTATION STANDARD SPECIFICATIONS FOR HIGHWAY AND STRUCTURE CONSTRUCTION, SECTION 207.3.6. PERCENT COMPACTION SHALL BE GREATER THAN 95% OF STANDARD PROCTOR. MATERIAL SHALL BE COMPACTED WITH MOISTURE CONTENT WET OF OPTIMUM DENSITY MOISTURE. MATERIAL SHOULD BE PLACED IN LAYERS GENERALLY NOT EXCEEDING 8 INCHES IN THICKNESS BEFORE COMPACTION.

CLEARING AND SUBGRADE PREPARATION:
 ALL EXISTING TOPSOIL, ROOTMAT, AND ANY OTHER SOFT OR UNSUITABLE MATERIALS SHALL BE REMOVED FROM THE CLEARING AND STRIPPING LIMITS.

PRIOR TO INITIATION OF FILL PLACEMENT, THE STRIPPED AREA SHALL BE OBSERVED BY AN EXPERIENCED GEOTECHNICAL ENGINEER OR HIS AUTHORIZED REPRESENTATIVE TO AID IN LOCATING UNSUITABLE AND/OR HIGHLY PLASTIC MATERIALS WHICH REQUIRE COMPLETE AND/OR PARTIAL REMOVAL.

THE PREPARATION OF FILL SUBGRADES OF EMBANKMENTS SHALL BE OBSERVED ON A FULL-TIME BASIS BY AN EXPERIENCED GEOTECHNICAL ENGINEER OR HIS AUTHORIZED REPRESENTATIVE TO ENSURE THAT ALL UNSUITABLE MATERIALS HAVE BEEN COMPLETELY REMOVED.

FILL PLACEMENT:
 FILL MATERIALS SHALL BE PLACED AND COMPACTED IN ACCORDANCE WITH THE PROJECT GEOTECHNICAL RECOMMENDATIONS.

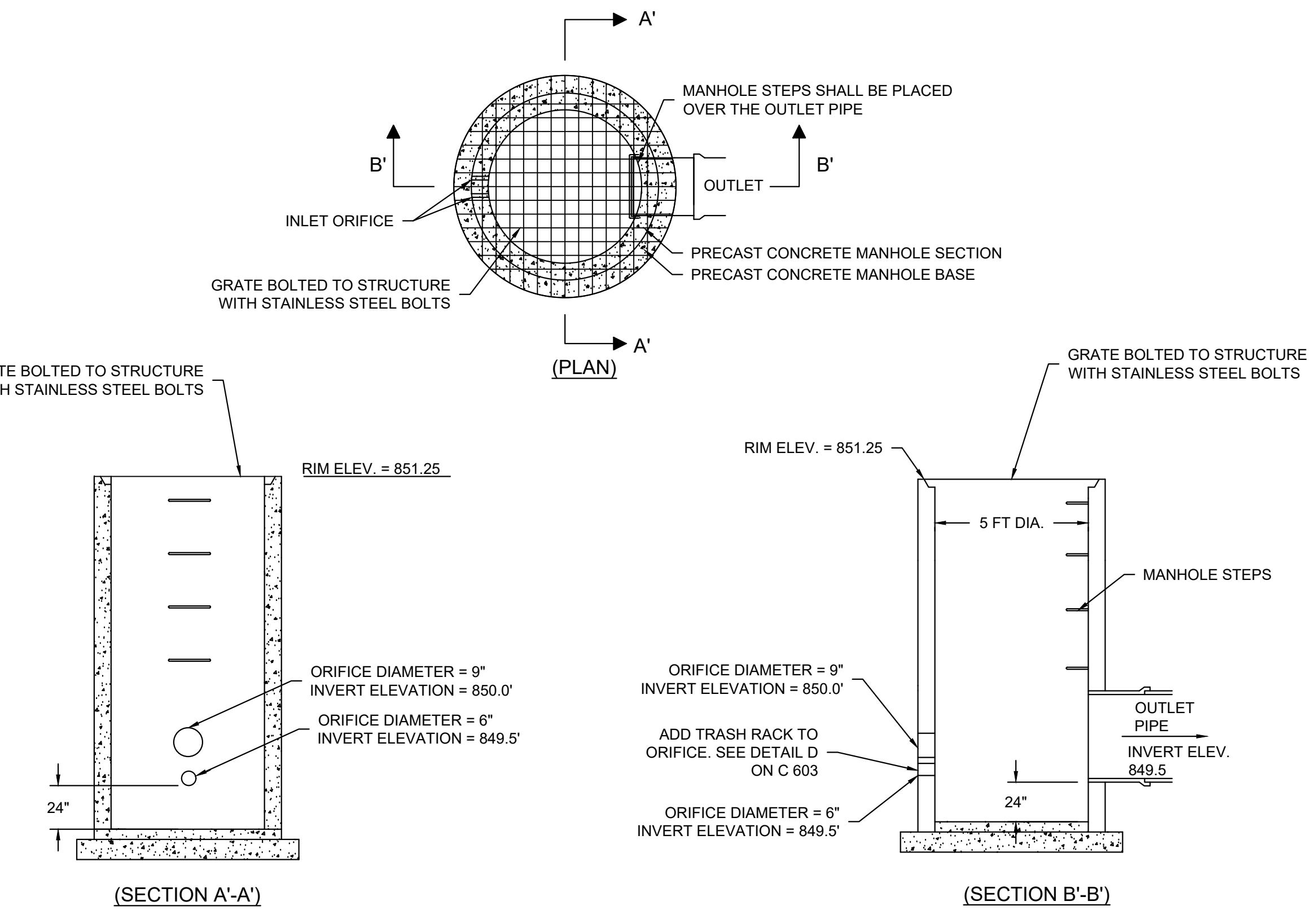
THE FOOTPRINT OF THE EMBANKMENT AREAS SHALL BE WELL DEFINED, INCLUDING THE LIMITS OF THE FILL ZONES, AT THE TIME OF FILL PLACEMENT, WITH GRADE CONTROL MAINTAINED THROUGHOUT THE FILL PLACEMENT OPERATIONS.

FILL OPERATIONS SHALL BE OBSERVED ON A FULL-TIME BASIS BY A QUALIFIED SOIL TECHNICIAN, WHO SHALL PERFORM IN PLACE DENSITY TESTS TO DETERMINE IF MINIMUM COMPACTION REQUIREMENTS ARE BEING MET.

FILL MATERIALS SHALL NOT BE PLACED ON FROZEN SOILS. SIMILARLY, BORROW FILL MATERIALS SHALL NOT CONTAIN FROZEN MATERIALS AT THE TIME OF PLACEMENT. FROZEN SOILS, FROM BOTH SUBGRADE AND FILL, SHALL BE REMOVED PRIOR TO CONTINUATION OF FILL OPERATIONS.

AREAS RECEIVING FILL SHALL BE GRADED TO FACILITATE POSITIVE DRAINAGE OF ANY FREE WATER ASSOCIATED WITH PRECIPITATION AND SURFACE RUNOFF.

A WET DETENTION BASIN CROSS SECTION
 NOT TO SCALE



D OUTLET CONTROL MANHOLE
 NOT TO SCALE

GRATE BOLTED TO STRUCTURE WITH STAINLESS STEEL BOLTS

RIM ELEV. = 851.25

ORIFICE DIAMETER = 9"
 INVERT ELEVATION = 850.0'

ORIFICE DIAMETER = 6"
 INVERT ELEVATION = 849.5'

(SECTION A-A')

GRATE BOLTED TO STRUCTURE WITH STAINLESS STEEL BOLTS

RIM ELEV. = 851.25

5 FT DIA.

MANHOLE STEPS

ORIFICE DIAMETER = 9"
 INVERT ELEVATION = 850.0'

ADD TRASH RACK TO ORIFICE. SEE DETAIL D ON C 603

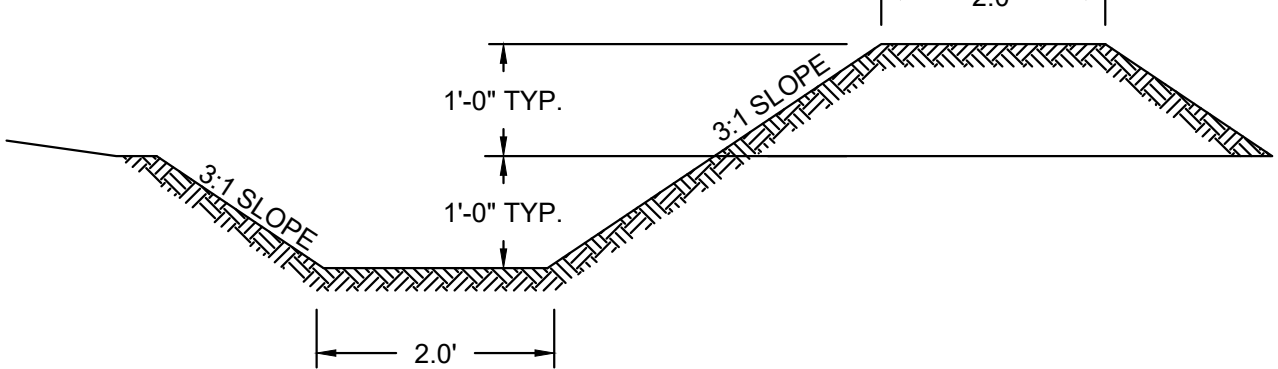
ORIFICE DIAMETER = 6"
 INVERT ELEVATION = 849.5'

24"

OUTLET PIPE
 INVERT ELEV. 849.5

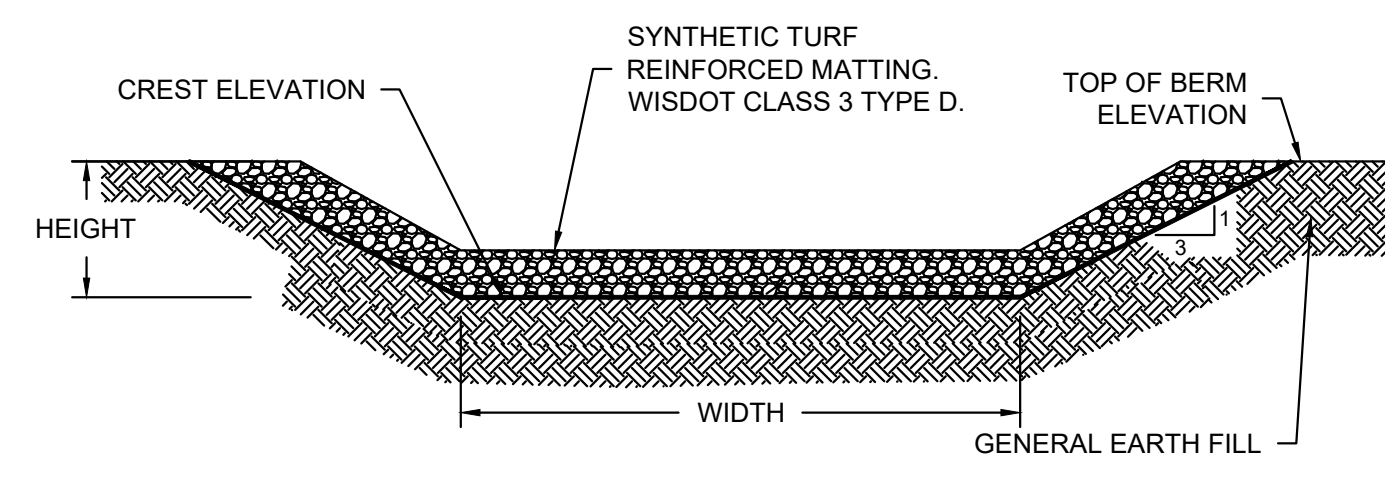
(SECTION B-B')

- NOTES:
- MATCH BERMS TO EXISTING GROUND AND GRADE SWALES TO DRAIN TO BASIN.
 - FOR SWALES THAT ARE TO SERVE LONGER THAN 30 DAYS, THE SIDE SLOPES, INCLUDING THE RIDGE AND DOWN SLOPE SIDE, SHALL BE STABILIZED AS SOON AS THEY ARE CONSTRUCTED.
 - TEMPORARY TOP SOILING AND SEEDING WITH CLASS 1 TYPE B EROSION MATTING SHALL BE USED FOR STABILIZATION. WATER-SOLUBLE ANIONIC POLYACRYLAMIDE (PAM) SHALL NOT BE USED IN DIVERSION SWALES.
 - FOR SWALES SERVING LESS THAN 30 DAYS, ONLY THE DOWN SLOPE SIDE OF THE SWALE SHALL BE STABILIZED AS SOON AS CONSTRUCTED.



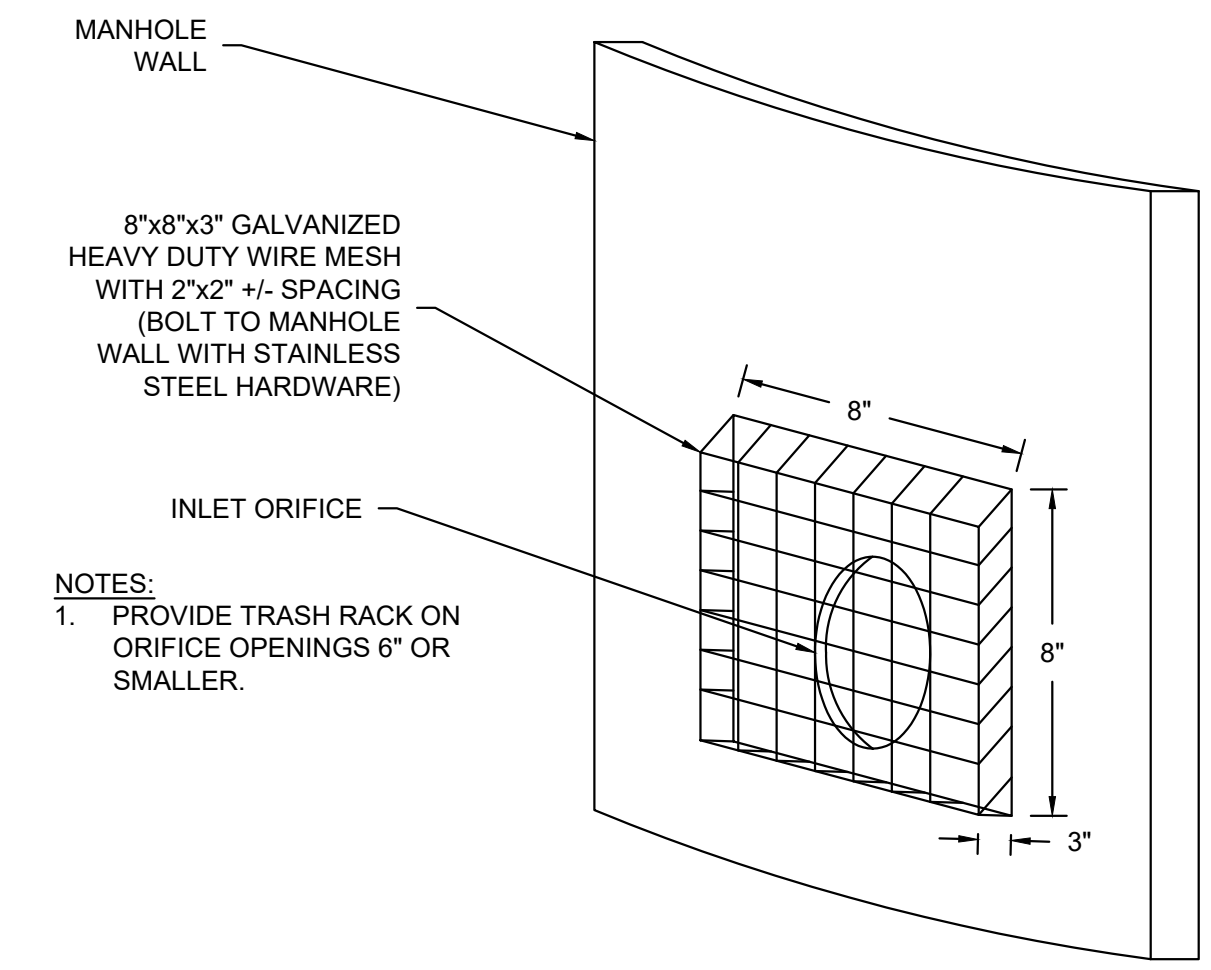
GENERAL NOTE:
 CONSTRUCTION SITE DIVERSION SWALES SHALL CONFORM TO WDNR CONSERVATION PRACTICE STANDARD #1066

F CONSTRUCTION SITE DIVERSION: WDNR TS-1066
 NOT TO SCALE



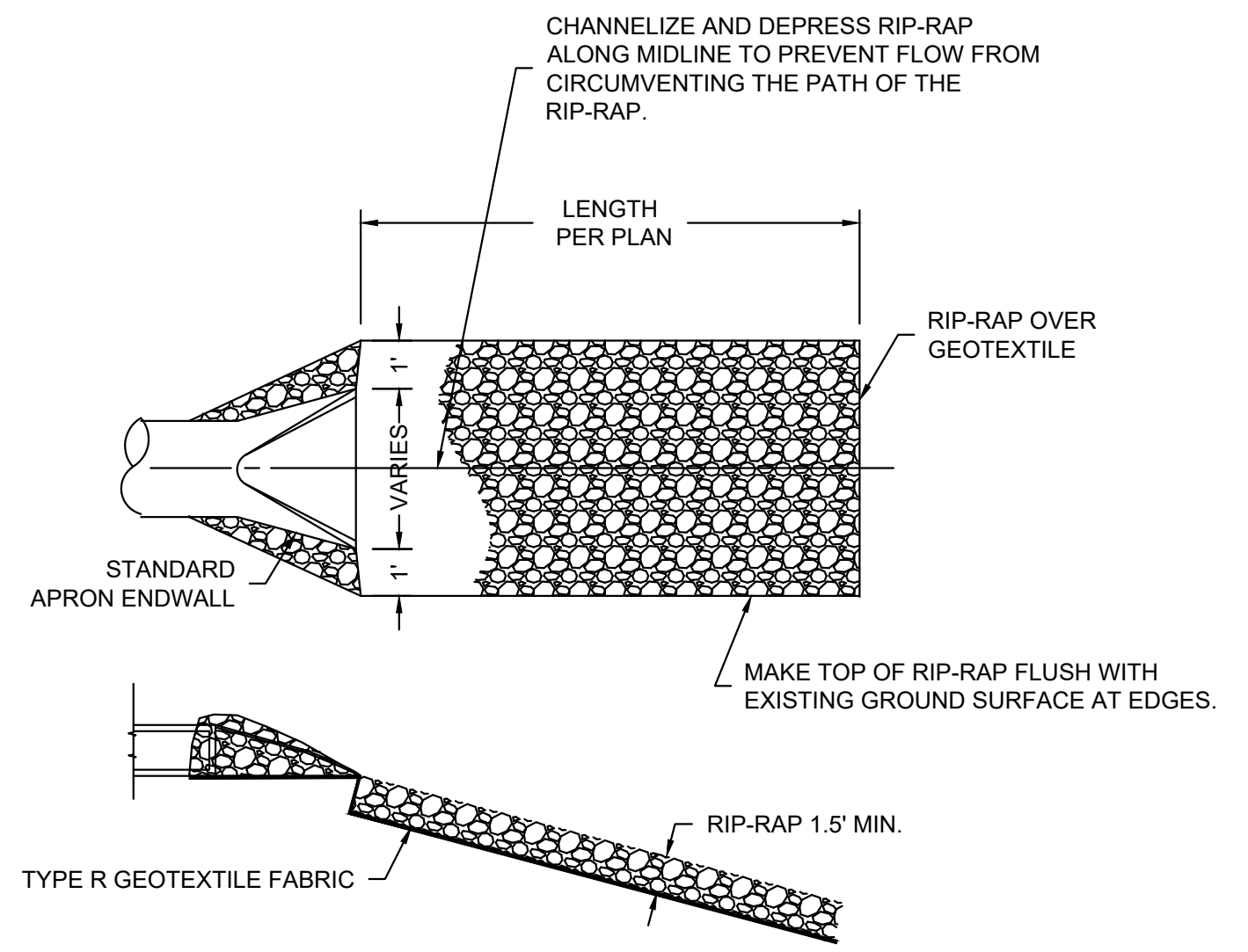
EMERGENCY SPILLWAY CONSTRUCTION INFORMATION					
WET DETENTION POND	TOP OF BERM (FT)	CREST ELEVATION (FT)	WIDTH (FT)	HEIGHT (FT)(min.)	100-YEAR HWL (FT)
BASIN	852.00	851.50	10	0.5	851.49

B EMERGENCY SPILLWAY
 NOT TO SCALE



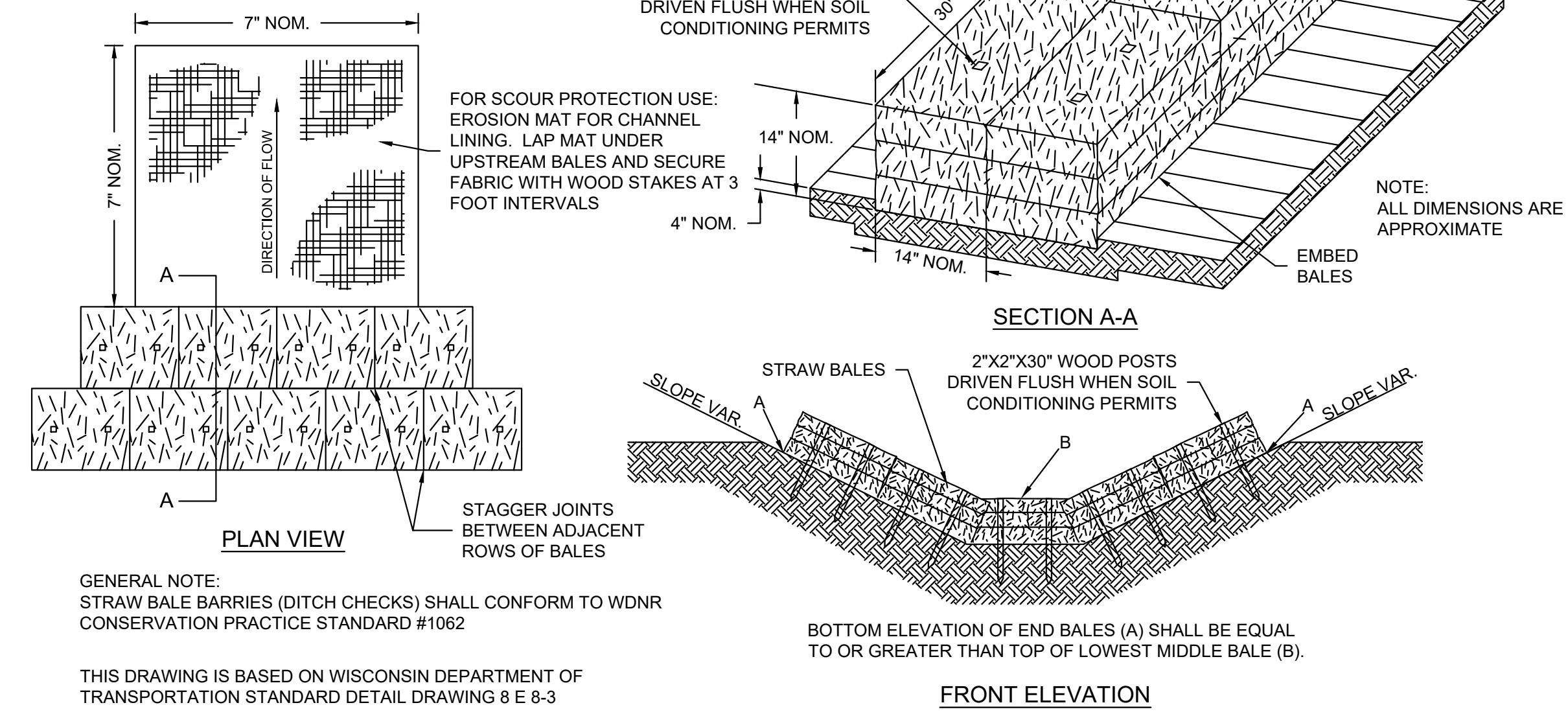
E TRASH RACK
 NOT TO SCALE

- NOTES:
- PROVIDE TRASH RACK ON ORIFICE OPENINGS 6" OR SMALLER.



C RIP-RAP DISCHARGE APRON
 NOT TO SCALE

- NOTES:
- INSTALL RIP-RAP WHERE SHOWN ON PLANS.
 - FOR PERMANENT POOL (WET) DETENTION BASINS: EXTEND RIP-RAP FROM OUTFALL TO AT LEAST 10 FEET BEYOND THE NORMAL WATER LEVEL.
 - RIP-RAP SHALL BE MEDIUM RIP-RAP PER WISDOT STANDARD SPECIFICATIONS FOR HIGHWAY AND STRUCTURE CONSTRUCTION.
 - GEOTEXTILE FABRIC SHALL BE TYPE R PER WISDOT STANDARD SPECIFICATIONS PER HIGHWAY AND STRUCTURE CONSTRUCTION.



G DITCH CHECKS: WDNR TS-1062
 NOT TO SCALE

GENERAL NOTE:
 STRAW BALE BARRIERS (DITCH CHECKS) SHALL CONFORM TO WDNR CONSERVATION PRACTICE STANDARD #1062

THIS DRAWING IS BASED ON WISCONSIN DEPARTMENT OF TRANSPORTATION STANDARD DETAIL DRAWING 8 E 8-3

PROJECT:
 BEADRY SERVICES, INC.

OWNER:
 BEADRY SERVICES, INC.
 1522 Pearl St.
 Waukesha, WI 53186

ARCHITECT:
 KORB AND ASSOCIATES ARCHITECTS
 648 N. Plankinton Ave.
 Suite 240
 Milwaukee, WI 53203

CONSTRUCTION MANAGER:
 CONSTRUCTION MANAGER

CIVIL ENGINEER:
 THE SIGMA GROUP

REVISION NO.	DATE

COMM NO.: 17007-01
 SCALE: AS NOTED
 PHASE: SCHEMATIC DESIGN
 DATE: 3/21/2017

