



Agrecol Native Nursery
2918 Agriculture Drive
Madison, WI 53718
608-226-2544
www.agrecol.com

Seeding Rate: 9.00 PLS/LBS Acre 73.00 PLS/LBS SF

Infiltration Swale Seed Mix

WILDFLOWERS		OZ/ACRE
Alisma subcordatum	Common Water Plantain	2.00
Asclepias incarnata	Marsh Milkweed	6.00
Aster novae-angliae	New England Aster	2.00
Desmodium canadense	Canada Tick Trefoil	4.00
Ratibida pinnata	Yellow Coneflower	3.00
Rudbeckia hirta	Black-Eyed Susan	2.00
Rudbeckia subtomentosa	Sweet Black-Eyed Susan	2.00
Solidago ohioensis	Ohio Goldenrod	1.00
Verbena hastata	Blue Vervain	1.75
Vernonia fasciculata	Ironweed	2.00
GRASSES, SEDGES & RUSHES		
Andropogon gerardii	Big Bluestem	10.00
Bromus ciliatus	Fringed Brome	36.00
Carex comosa	Bristly Sedge	5.00
Carex vulpinoidea	Brown Fox Sedge	1.50
Elymus virginicus	Virginia Wild Rye	36.00
Glyceria straita	Fowl Manna Grass	2.00
Panicum virgatum	Switch Grass	3.00
Scirpus atrovirens	Dark-Green Bullrush	0.50
Scirpus cyperinus	Wool Grass	0.25
Sorghastrum nutans	Indian Grass	16.00
Spartina pectinata	Prairie Cord Grass	8.00

INFILTRATION BASIN SEED MIX

Agrecol Native Nursery

Flood Basin Rainwater Renewal Mix (Standard Mix) Full Sun

Item # SM-FBRRM

Coverage Area: 43,560 /SF

Seeds: 60 /SF

Mix Diversity by Type	% of Seed Count	Species Count
Grasses	40%	7
Sedges	10%	2
Wildflowers	47%	24
Legumes	3%	3
TOTALS	100%	36

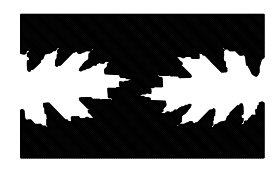
Latin Name	Common Name	Origin	Total Seeds	% of Total Seeds
GRASSES				
Bromus ciliatus	Fringed Brome	Iowa CO, IA	112,011	4.29%
Calamagrostis canadensis	Blue Joint Grass	Waushara CO, WI	140,014	5.36%
Elymus virginicus	Virginia Wild Rye	Allamakee CO, IA	140,014	5.36%
Glyceria grandis	Reed Manna Grass	Green CO, WI	140,014	5.36%
Panicum virgatum	Switchgrass	Green CO, WI	84,009	3.21%
Sorghastrum nutans	Indian Grass	KS	84,009	3.21%
Spartina pectinata	Prairie Cord Grass	Winona CO, MN	84,009	3.21%
SEDGES				
Carex bebbii	Bebb's Sedge	Dane CO, WI	142,115	5.44%
Carex stipata	Common Fox Sedge	Dane CO, WI	142,115	5.44%
Scirpus atrovirens	Dark-Green Bullrush	Dane CO, WI	236,858	9.06%
Scirpus cyperinus	Wool Grass	Dane CO, WI	236,858	9.06%
WILDFLOWERS				
Asclepias incarnata	Marsh Milkweed	Dubuque CO, IA	33,078	1.27%
Aster ericoides	Heath Aster	Walworth CO, IA	33,078	1.27%
Aster novae-angliae	New England Aster	Iowa CO, WI	57,336	2.19%
Aster puniceus	Red-Stemmed Aster	Rock CO, WI	55,131	2.11%
Eupatorium maculatum	Spotted Joe Pye Weed	Iowa CO, WI	55,131	2.11%
Eupatorium perfoliatum	Boneset	Dane CO, WI	66,157	2.53%
Helenium autumnale	Sneezeweed	Iowa CO, WI	66,157	2.53%
Helianthus grosseserratus	Saw-Tooth Sunflower	IA	4,410	0.17%
Liatris spicata	Marsh Blazing Star	Kenosha CO, WI	55,131	2.11%
Lobelia siphilitica	Great Blue Lobelia	Dane CO, WI	48,515	1.86%
Lycopus americanus	Water Horehound	Allamakee CO, IA	55,131	2.11%
Monarda fistulosa	Wild Bergamot	Allamakee CO, IA	44,105	1.69%
Napaea dioica	Glade Mallow	Rock CO, WI	11,026	0.42%
Physostegia virginiana	Obedient Plant	Jefferson CO, WI	22,052	0.84%
Pycnanthemum virginianum	Mountain Mint	Walworth CO, IA	44,105	1.69%
Ratibida pinnata	Yellow Coneflower	Allamakee CO, IA	55,131	2.11%
Rudbeckia hirta	Black-Eyed Susan	Dubuque CO, IA	55,131	2.11%
Rudbeckia laciniata	Wild Golden Glow	Rock CO, WI	33,078	1.27%
Silphium perfoliatum	Cupplant	Lafayette CO, WI	4,410	0.17%
Solidago riddellii	Riddell's Goldenrod	Kenosha CO, WI	44,105	1.69%
Verbena hastata	Blue Vervain	Rock CO, WI	61,746	2.36%
Vernonia fasciculata	Ironweed	Columbia CO, WI	55,131	2.11%
Veronicastrum virginicum	Culver's Root	Dane CO, WI	55,131	2.11%
Zizia aurea	Golden Alexanders	Allamakee CO, IA	44,105	1.69%
LEGUMES				
Cassia hebecarpa	Wild Senna	Dane CO, WI	13,068	0.50%

STORMWATER SEED MIX



OVERALL LANDSCAPE PLAN
Scale: 1" = 120'0"

HELLER & ASSOCIATES, LLC
LANDSCAPE ARCHITECTURE
P.O. Box 1359
Lake Geneva, Wisconsin 53147-1359
ph 262.639.9733
david@wdavidheller.com
www.wdavidheller.com



PROJECT
THE GLEN AT STANDING STONE

Tenny Avenue
Waukesha, WI

ISSUANCE AND REVISIONS

DATE	DESCRIPTION
6.18.20	ISSUE TO OWNER
9.22.20	REVISED CIVIL
10.08.20	REV. PLANTING PLAN
10.15.20	REV. PLANTING PLAN
11.13.20	REVISED CIVIL

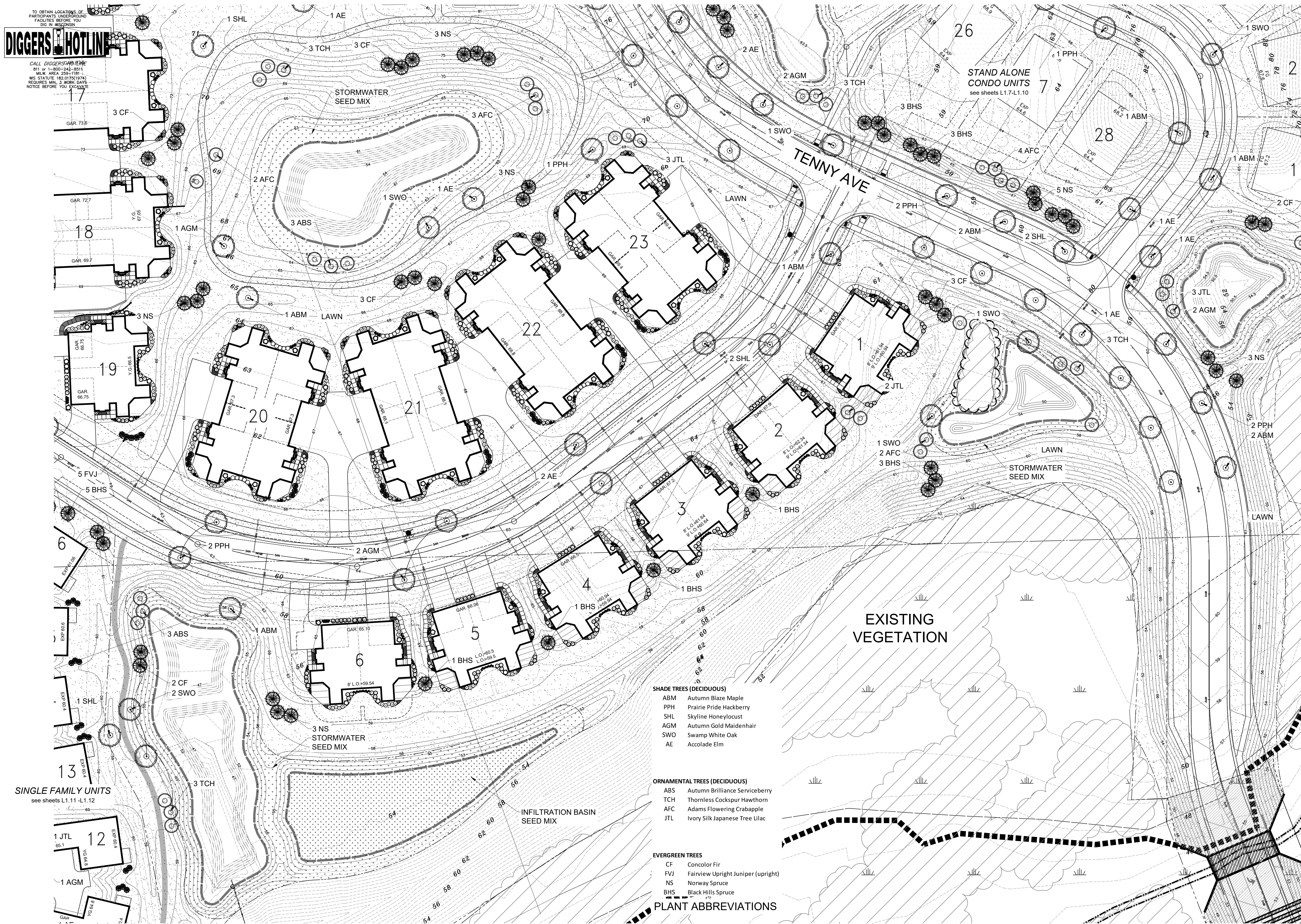
Information contained herein is based on survey information, field inspection, and believed to be accurate.

SHEET TITLE
OVERALL LANDSCAPE PLAN

PROJECT MANAGER	WDH
PROJECT NUMBER	20-041
DATE	11.13.20
SHEET NUMBER	

L 1.0

DIGGERS HOTLINE
 TO OBTAIN LOCATIONS OF PARTICIPANTS UNDERGROUND FACILITIES BEFORE YOU DIG IN WISCONSIN
 CALL DIGGERS HOTLINE 811 or 1-800-242-8811
 M.W. AREA 259-1181
 WIS. STATUTE 182.07(1)(b)
 REQUIRES MIN. 3 WORKING DAYS NOTICE BEFORE YOU EXCAVATE



- SHADE TREES (DECIDUOUS)**
- ABM Autumn Blaze Maple
 - PPH Prairie Pride Hackberry
 - SHL Skyline Honeylocust
 - AGM Autumn Gold Maidenhair
 - SWO Swamp White Oak
 - AE Accolade Elm
- ORNAMENTAL TREES (DECIDUOUS)**
- ABS Autumn Brilliance Serviceberry
 - TCH Thornless Cocksbur Hawthorn
 - AFC Adams Flowering Crabapple
 - JTL Ivory Silk Japanese Tree Lilac
- EVERGREEN TREES**
- CF Concolor Fir
 - FVJ Fairview Upright Juniper (upright)
 - NS Norway Spruce
 - BHS Black Hills Spruce
- PLANT ABBREVIATIONS**



ENLARGED LANDSCAPE PLAN
 Scale: 1" = 40'0"

HELLER & ASSOCIATES, LLC
 LANDSCAPE ARCHITECTURE
 P.O. Box 1359
 Lake Geneva, Wisconsin 53147-1359
 ph 262.639.9733
 david@wdavidheller.com
 www.wdavidheller.com



PROJECT
THE GLEN AT STANDING STONE

Tenny Avenue
 Waukesha, WI

ISSUANCE AND REVISIONS

DATE	DESCRIPTION
6.18.20	ISSUE TO OWNER
9.22.20	REVISED CIVIL
10.08.20	REV. PLANTING PLAN
10.15.20	REV. PLANTING PLAN
11.13.20	REVISED CIVIL

Information contained herein is based on survey information, field inspection, and believed to be accurate.

SHEET TITLE
ENLARGED LANDSCAPE PLAN: SOUTH

PROJECT MANAGER	WDH
PROJECT NUMBER	20-041
DATE	11.13.20
SHEET NUMBER	

L 1.1



- SHADE TREES (DECIDUOUS)**
- ABM Autumn Blaze Maple
 - PPH Prairie Pride Hackberry
 - SHL Skyline Honeylocust
 - AGM Autumn Gold Maidenhair
 - SWO Swamp White Oak
 - AE Accolade Elm

- ORNAMENTAL TREES (DECIDUOUS)**
- ABS Autumn Brilliance Serviceberry
 - TCH Thornless Cocksbur Hawthorn
 - AFC Adams Flowering Crabapple
 - JTL Ivory Silk Japanese Tree Lilac

- EVERGREEN TREES**
- CF Concolor Fir
 - FVJ Fairview Upright Juniper (upright)
 - NS Norway Spruce
 - BHS Black Hills Spruce

PLANT ABBREVIATIONS



HELLER & ASSOCIATES, LLC
 LANDSCAPE ARCHITECTURE
 P.O. Box 1359
 Lake Geneva, Wisconsin 53147-1359
 ph 262.639.9733
 david@wdavidheller.com
 www.wdavidheller.com



PROJECT
THE GLEN AT STANDING STONE

Tenny Avenue
 Waukesha, WI

ISSUANCE AND REVISIONS

DATE	DESCRIPTION
6.18.20	ISSUE TO OWNER
9.22.20	REVISED CIVIL
10.08.20	REV. PLANTING PLAN
10.15.20	REV. PLANTING PLAN
11.13.20	REVISED CIVIL

Information contained herein is based on survey information, field inspection, and believed to be accurate.

SHEET TITLE
ENLARGED LANDSCAPE PLAN: WEST

PROJECT MANAGER	WDH
PROJECT NUMBER	20-041
DATE	11.13.20
SHEET NUMBER	

L 1.2



ENLARGED LANDSCAPE PLAN

Scale: 1" = 40'0"



- SHADE TREES (DECIDUOUS)**
- ABM Autumn Blaze Maple
 - PPH Prairie Pride Hackberry
 - SHL Skyline Honeylocust
 - AGM Autumn Gold Maidenhair
 - SWO Swamp White Oak
 - AE Accolade Elm

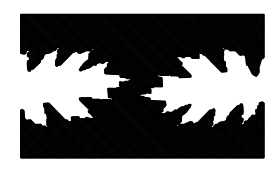
- ORNAMENTAL TREES (DECIDUOUS)**
- ABS Autumn Brilliance Serviceberry
 - TCH Thornless Cockspur Hawthorn
 - AFC Adams Flowering Crabapple
 - JTL Ivory Silk Japanese Tree Lilac

- EVERGREEN TREES**
- CF Concolor Fir
 - FVJ Fairview Upright Juniper (upright)
 - NS Norway Spruce
 - BHS Black Hills Spruce

PLANT ABBREVIATIONS



HELLER & ASSOCIATES, LLC
 LANDSCAPE ARCHITECTURE
 P.O. Box 1359
 Lake Geneva, Wisconsin 53147-1359
 ph 262.639.9733
 david@wdavidheller.com
 www.wdavidheller.com



PROJECT
THE GLEN AT STANDING STONE

Tenny Avenue
 Waukesha, WI

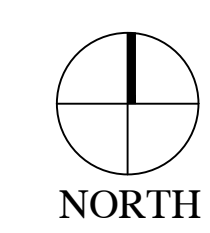
ISSUANCE AND REVISIONS

DATE	DESCRIPTION
6.18.20	ISSUE TO OWNER
9.22.20	REVISED CIVIL
10.08.20	REV. PLANTING PLAN
10.15.20	REV. PLANTING PLAN
11.13.20	REVISED CIVIL

Information contained herein is based on survey information, field inspection, and believed to be accurate.

SHEET TITLE
ENLARGED LANDSCAPE PLAN: NORTH

PROJECT MANAGER WDH
PROJECT NUMBER 20-041
DATE 11.13.20
SHEET NUMBER



ENLARGED LANDSCAPE PLAN
 Scale: 1" = 40'0"

L 1.3



CALL DIGGERS HOTLINE
811 or 1-800-242-8811
MILWAUKEE AREA 259-1181
WIS. STATUTE 182.07(1974)
REQUIRES MIN. 3 WORK DAYS
NOTICE BEFORE YOU EXCAVATE

ORNAMENTAL TREES (DECIDUOUS)

JTL Ivory Silk Japanese Tree Lilac

EVERGREEN TREES

H CJ Hetzi Columnar Juniper (upright)

EVERGREEN SHRUBS

SGJ Sea Green Juniper
KCPJ Kallay Compact Pfitzer Juniper
TIY Taunton Intermediate Yew

DECIDUOUS SHRUBS

BRC Brilliant Red Chokeberry
LLH Little Lime Hydrangea
UH Unique Hydrangea
NFS Neon Flash Spirea
MKL Miss Kim Dwarf Lilac
KSV Fragrant Koreanspice Viburnum
AJAV Autumn Jazz Arrowwood Viburnum
MV Mohican Viburnum
WRW Wine & Roses Compact Weigela

ORNAMENTAL GRASSES

KFRG Karl Foerster Feather Reed Grass
RSG Red Switch Grass

HERBACEOUS PERENNIALS

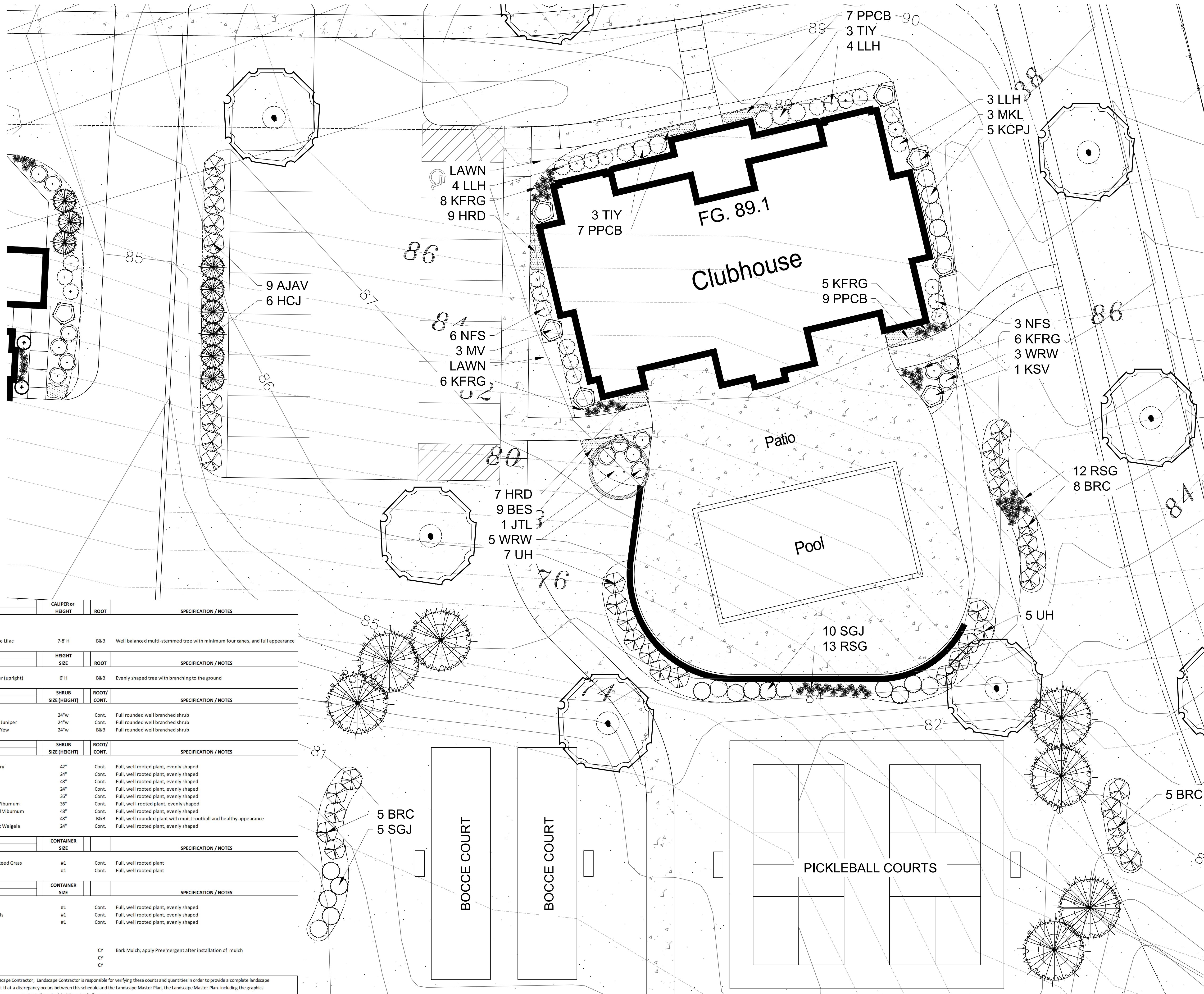
HRD Happy Returns Daylily
PPCB Palace Purple Coralbells
BES Black-eyed Susan

PLANT ABBREVIATIONS

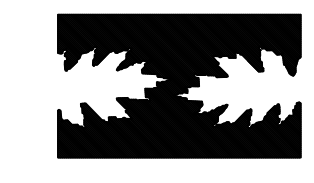
PLANT KEY	QUANTITY	PLANT MATERIAL PROPOSED	COMMON NAME	CALIPER or HEIGHT	ROOT	SPECIFICATION / NOTES
Proposed Landscape Materials						
ORNAMENTAL TREES (DECIDUOUS)						
JTL	1	Syringa reticulata 'Ivory Silk'	Ivory Silk Japanese Tree Lilac	7-8' H	B&B	Well balanced multi-stemmed tree with minimum four canes, and full appearance
EVERGREEN TREES						
H CJ	6	Juniperus chinensis 'Hetzi Columnaris'	Hetzi Columnar Juniper (upright)	6' H	B&B	Evenly shaped tree with branching to the ground
EVERGREEN SHRUBS						
SGJ	15	Juniperus chinensis 'Sea Green'	Sea Green Juniper	24" w	Cont.	Full rounded well branched shrub
KCPJ	5	Juniperus chinensis 'Kallay'	Kallay Compact Pfitzer Juniper	24" w	Cont.	Full rounded well branched shrub
TIY	6	Taxus xmedia 'Taunton'	Taunton Intermediate Yew	24" w	B&B	Full rounded well branched shrub
DECIDUOUS SHRUBS						
BRC	13	Aronia arbutifolia 'Brilliantissima'	Brilliant Red Chokeberry	42"	Cont.	Full, well rooted plant, evenly shaped
LLH	11	Hydrangea paniculata 'Little Lime'	Little Lime Hydrangea	24"	Cont.	Full, well rooted plant, evenly shaped
UH	12	Hydrangea paniculata 'Unique'	Unique Hydrangea	48"	Cont.	Full, well rooted plant, evenly shaped
NFS	9	Spirea xbumalda 'Neon Flash'	Neon Flash Spirea	24"	Cont.	Full, well rooted plant, evenly shaped
MKL	3	Syringa patula 'Miss Kim'	Miss Kim Dwarf Lilac	36"	Cont.	Full, well rooted plant, evenly shaped
KSV	1	Viburnum cadesii	Fragrant Koreanspice Viburnum	36"	Cont.	Full, well rooted plant, evenly shaped
AJAV	9	Viburnum dentatum 'Autumn Jazz'	Autumn Jazz Arrowwood Viburnum	48"	Cont.	Full, well rooted plant, evenly shaped
MV	3	Viburnum lantana 'Mohican'	Mohican Viburnum	48"	B&B	Full, well rounded plant with moist rootball and healthy appearance
WRW	8	Weigela florida 'Wine & Roses'	Wine & Roses Compact Weigela	24"	Cont.	Full, well rooted plant, evenly shaped
ORNAMENTAL GRASSES						
KFRG	20	Calamagrostis acutiflora 'Karl Foerster'	Karl Foerster Feather Reed Grass	#1	Cont.	Full, well rooted plant
RSG	25	Panicum virgatum 'Rotstrahlbusch'	Red Switch Grass	#1	Cont.	Full, well rooted plant
HERBACEOUS PERENNIALS						
HRD	16	Hemerocallis 'Happy Returns'	Happy Returns Daylily	#1	Cont.	Full, well rooted plant, evenly shaped
PPCB	14	Heuchera micrantha 'Palace Purple'	Palace Purple Coralbells	#1	Cont.	Full, well rooted plant, evenly shaped
BES	9	Rudbeckia fulgida 'Goldsturm'	Black-eyed Susan	#1	Cont.	Full, well rooted plant, evenly shaped
Hardscape Materials						
	27	Shredded Hardwood Mulch (3" depth)	Area: 2,950 SF		CY	Bark Mulch; apply Preemergent after installation of mulch
	18	Soil Amendments (2" depth)	Area: 2,950 SF		CY	
	18	Pulverized Topsoil (2" over bed areas)	Area: 2,950 SF		CY	

*Landscape counts & quantities are provided as a service to the Landscape Contractor; Landscape Contractor is responsible for verifying these counts and quantities in order to provide a complete landscape installation as outlined on this Landscape Master Plan. In the event that a discrepancy occurs between this schedule and the Landscape Master Plan, the Landscape Master Plan including the graphics and notations depicted therein shall govern.

PLANT & MATERIAL SCHEDULE



HELLER & ASSOCIATES, LLC
LANDSCAPE ARCHITECTURE
P.O. Box 1359
Lake Geneva, Wisconsin 53147-1359
ph 262.639.9733
david@wdavidheller.com
www.wdavidheller.com



PROJECT
THE GLEN AT STANDING STONE

Tenny Avenue
Waukesha, WI

ISSUANCE AND REVISIONS

DATE	DESCRIPTION
6.18.20	ISSUE TO OWNER
9.22.20	REVISED CIVIL
10.08.20	REV. PLANTING PLAN
10.15.20	REV. PLANTING PLAN
11.13.20	REVISED CIVIL

SHEET TITLE
FOUNDATION LANDSCAPE PLAN: CLUBHOUSE & COMMON AREA

PROJECT MANAGER WDH
PROJECT NUMBER 20-041
DATE 11.13.20
SHEET NUMBER

L 1.4



FOUNDATION LANDSCAPE PLAN

Scale: 1" = 10'0"



PLANT KEY	QUANTITY	PLANT MATERIAL PROPOSED		CALIPER or HEIGHT	ROOT	SPECIFICATION / NOTES	PLANT SPACING
Proposed Landscape Materials							
EVERGREEN TREES							
HCJ	6	Juniperus chinensis 'Hetzii Columnaris'	Hetzi Columnar Juniper (upright)	6'H	B&B	Evenly shaped tree with branching to the ground	60"
DECIDUOUS SHRUBS							
HC	4	Cotoneaster acutifolia	Peking (Hedge) Cotoneaster	42"	B&B	Full, well rounded plant with moist rootball and healthy appearance	30-42"
LLH	12	Hydrangea paniculata 'Jane'	Little Lime Hydrangea	24"	Cont.	Full, well rooted plant, evenly shaped	42"
PPSR	12	Rosa rugosa 'Pink Pavement'	Pink Pavement Series Rose	18"	Cont.	Full, well rooted plant, evenly shaped	42"
LPS	16	Spirea japonica 'Little Princess'	Little Princess Spirea	18-24"	Cont.	Full, well rooted plant, evenly shaped	30"
NFS	12	Spirea xbumalda 'Neon Flash'	Neon Flash Spirea	24"	Cont.	Full, well rooted plant, evenly shaped	60"
MKL	4	Syringa patula 'Miss Kim'	Miss Kim Dwarf Lilac	36"	Cont.	Full, well rooted plant, evenly shaped	60"
MV	4	Viburnum lantana 'Mohican'	Mohican Viburnum	48"	B&B	Full, well rounded plant with moist rootball and healthy appearance	60"
WRW	16	Weigela florida 'Wine & Roses'	Wine & Roses Compact Weigela	24"	Cont.	Full, well rooted plant, evenly shaped	42"
ORNAMENTAL GRASSES							
KFRG	28	Calamagrostis acutiflora 'Karl Foerster'	Karl Foerster Feather Reed Grass	#1	Cont.	Full, well rooted plant	15-18"
PDS	44	Sporobolus heterolepis	Prairie Dropseed	#1	Cont.	Full, well rooted plant	18"
HERBACEOUS PERENNIALS							
HRD	28	Hemerocallis 'Happy Returns'	Happy Returns Daylily	#1	Cont.	Full, well rooted plant, evenly shaped	18"
Hardscape Materials							
	24	Shredded Hardwood Mulch (3" depth)	Area: 2,640 SF		CY	Bark Mulch; apply Preemergent after installation of mulch	
	16	Soil Amendments (2" depth)	Area: 2,640 SF		CY		
	16	Pulverized Topsoil (2" over bed areas)	Area: 2,640 SF		CY		

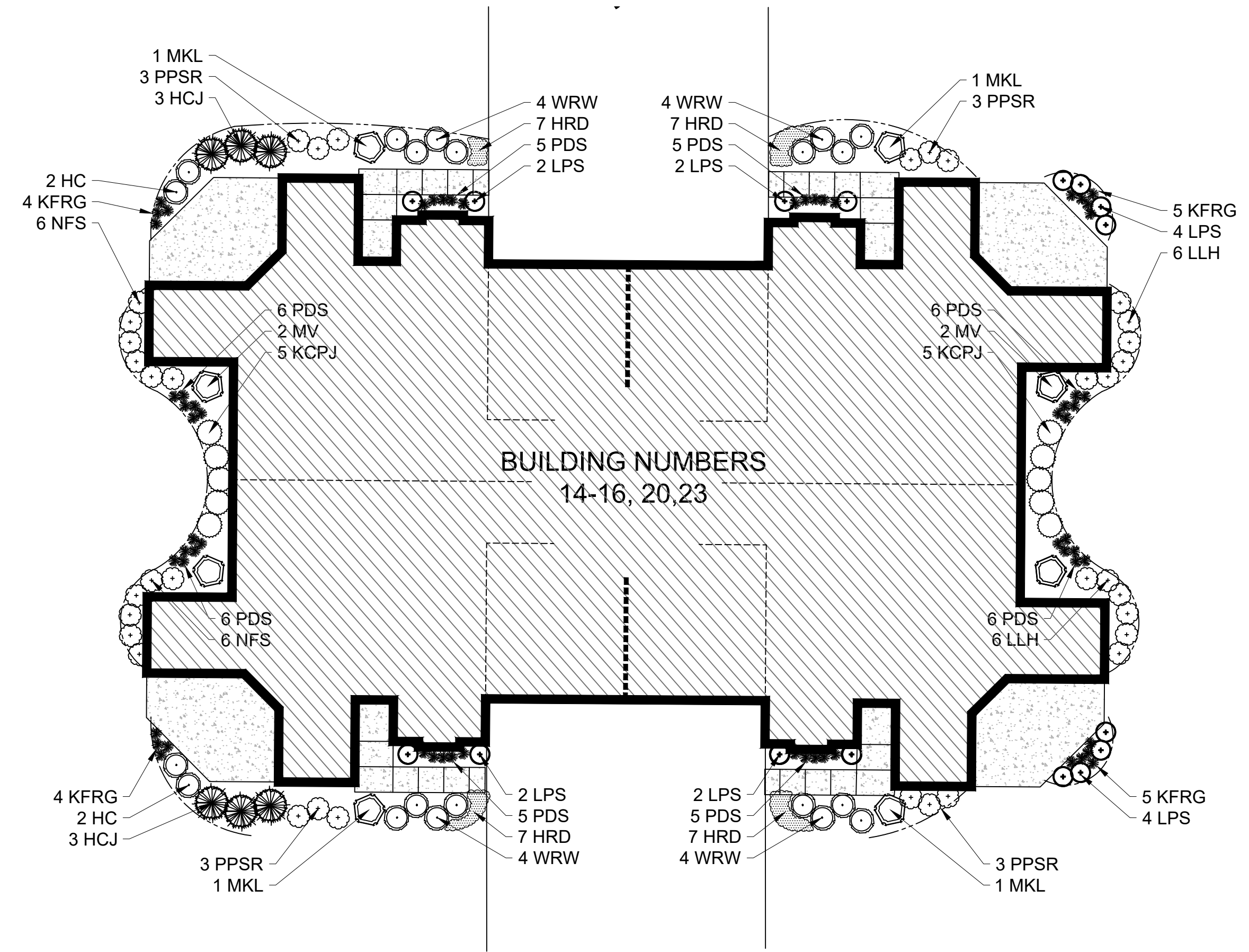
*Landscape counts & quantities are provided as a service to the Landscape Contractor; Landscape Contractor is responsible for verifying these counts and quantities in order to provide a complete landscape installation as outlined on this Landscape Master Plan. In the event that a discrepancy occurs between this schedule and the Landscape Master Plan, the Landscape Master Plan- including the graphics and notations depicted therein- shall govern.

PLANT & MATERIAL SCHEDULE: 4 UNIT

PLANT KEY	QUANTITY	PLANT MATERIAL PROPOSED		CALIPER or HEIGHT	ROOT	SPECIFICATION / NOTES	PLANT SPACING
Proposed Landscape Materials							
DECIDUOUS SHRUBS							
CRD	6	Cornus sericea 'Cardinal'	Cardinal Redtwig Dogwood	42"	Cont.	Full, well rooted plant, evenly shaped	48"
HC	10	Cotoneaster acutifolia	Peking (Hedge) Cotoneaster	42"	B&B	Full, well rounded plant with moist rootball and healthy appearance	30-42"
UH	5	Hydrangea paniculata 'Unique'	Unique Hydrangea	48"	Cont.	Full, well rooted plant, evenly shaped	60"
PPSR	10	Rosa rugosa 'Pink Pavement'	Pink Pavement Series Rose	18"	Cont.	Full, well rooted plant, evenly shaped	42"
GMS	4	Spirea xbumalda 'Goldmound'	Goldmound Spirea	24"	Cont.	Full, well rooted plant, evenly shaped	36"
AJAV	2	Viburnum dentatum 'Autumn Jazz'	Autumn Jazz Arrowwood Viburnum	48"	Cont.	Full, well rooted plant, evenly shaped	60"
MV	2	Viburnum lantana 'Mohican'	Mohican Viburnum	48"	B&B	Full, well rounded plant with moist rootball and healthy appearance	60"
WRW	6	Weigela florida 'Wine & Roses'	Wine & Roses Compact Weigela	24"	Cont.	Full, well rooted plant, evenly shaped	42"
ORNAMENTAL GRASSES							
KFRG	30	Calamagrostis acutiflora 'Karl Foerster'	Karl Foerster Feather Reed Grass	#1	Cont.	Full, well rooted plant	15-18"
RSG	11	Panicum virgatum 'Rotstrahlbusch'	Red Switch Grass	#1	Cont.	Full, well rooted plant	18"
HERBACEOUS PERENNIALS							
HRD	14	Hemerocallis 'Happy Returns'	Happy Returns Daylily	#1	Cont.	Full, well rooted plant, evenly shaped	18"
RRD	10	Hemerocallis 'Rosy Returns'	Rosy Returns Daylily	#1	Cont.	Full, well rooted plant, evenly shaped	18"
Hardscape Materials							
		Shredded Hardwood Mulch (3" depth)	Area: 1,410 SF		CY	Bark Mulch; apply Preemergent after installation of mulch	
	0	Soil Amendments (2" depth)	Area: 1,410 SF		CY		
	0	Pulverized Topsoil (2" over bed areas)	Area: 1,410 SF		CY		

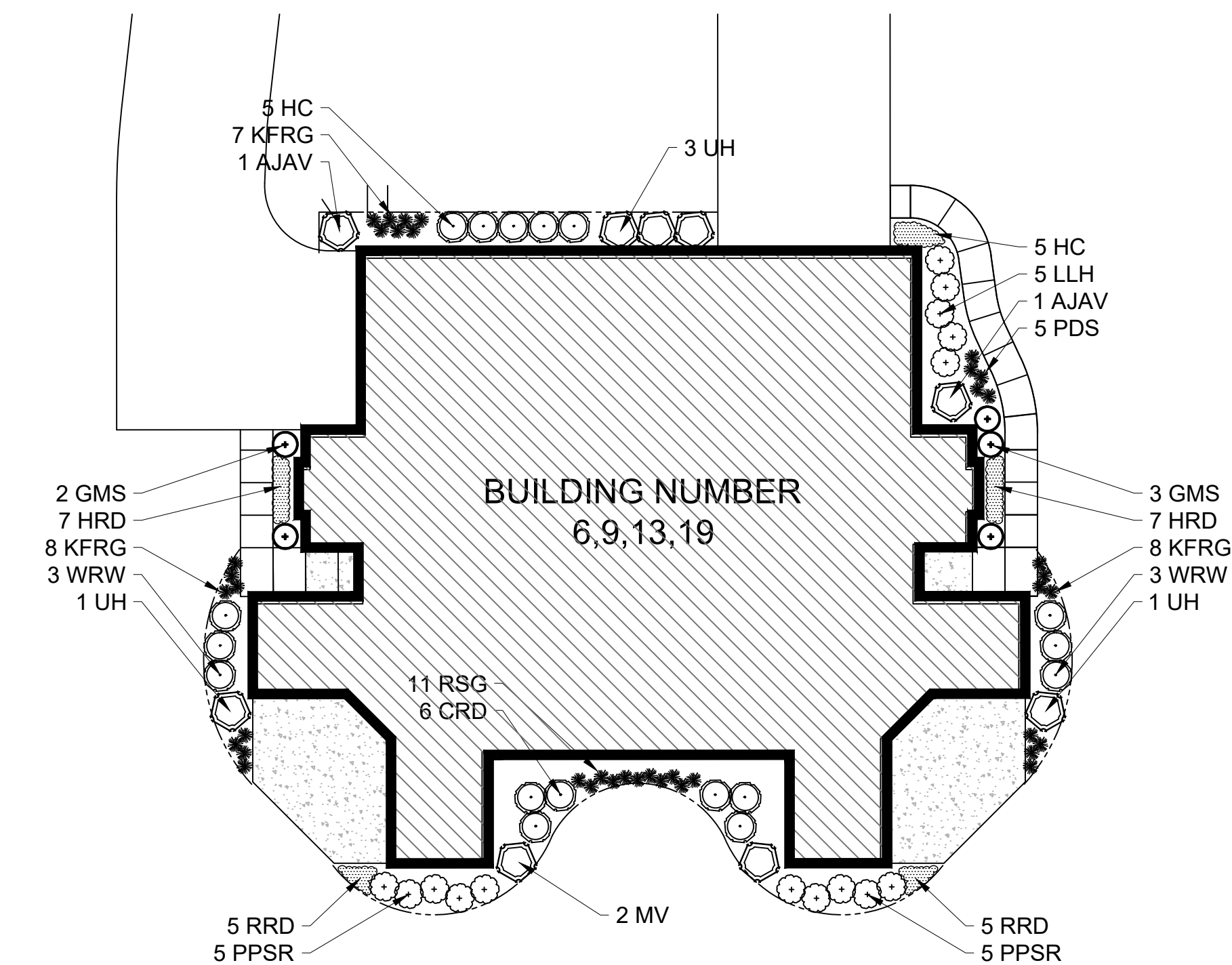
*Landscape counts & quantities are provided as a service to the Landscape Contractor; Landscape Contractor is responsible for verifying these counts and quantities in order to provide a complete landscape installation as outlined on this Landscape Master Plan. In the event that a discrepancy occurs between this schedule and the Landscape Master Plan, the Landscape Master Plan- including the graphics and notations depicted therein- shall govern.

PLANTING & HARDSCAPE DETAILS: 2 UNIT "A"



FOUNDATION LANDSCAPE PLAN: 4 UNIT

Scale: 1" = 16'0"



FOUNDATION LANDSCAPE PLAN: 2 UNIT "A"

Scale: 1" = 16'0"



PROJECT THE GLEN AT STANDING STONE

Tenny Avenue Waukesha, WI

ISSUANCE AND REVISIONS

DATE	DESCRIPTION
6.18.20	ISSUE TO OWNER
9.22.20	REVISED CIVIL
10.08.20	REV. PLANTING PLAN
10.15.20	REV. PLANTING PLAN
11.13.20	REVISED CIVIL

Information contained herein is based on survey information, field inspection, and believed to be accurate.

SHEET TITLE FOUNDATION LANDSCAPE PLAN: 4 UNIT WITH EXTENDED GARAGE

PROJECT MANAGER WDH

PROJECT NUMBER 20-041

DATE 11.13.20

SHEET NUMBER

L 1.5



PLANT KEY	QUANTITY	PLANT MATERIAL PROPOSED		SHRUB SIZE (HEIGHT)	ROOT/CONT.	SPECIFICATION / NOTES	PLANT SPACING
		BOTANICAL NAME	COMMON NAME				
DECIDUOUS SHRUBS							
CRD	6	Cornus sericea 'Cardinal'	Cardinal Redtwig Dogwood	42"	Cont.	Full, well rooted plant, evenly shaped	48"
HC	5	Cotoneaster acutifolia	Peking (Hedge) Cotoneaster	42"	B&B	Full, well rounded plant with moist rootball and healthy appearance	30-42"
LLH	10	Hydrangea paniculata 'Jane'	Little Lime Hydrangea	24"	Cont.	Full, well rooted plant, evenly shaped	42"
UH	2	Hydrangea paniculata 'Unique'	Unique Hydrangea	48"	Cont.	Full, well rooted plant, evenly shaped	60"
PPSR	10	Rosa rugosa 'Pink Pavement'	Pink Pavement Series Rose	18"	Cont.	Full, well rooted plant, evenly shaped	42"
GMS	6	Spiraea xbumalda 'Goldmound'	Goldmound Spirea	24"	Cont.	Full, well rooted plant, evenly shaped	36"
NFS	3	Spiraea xbumalda 'Neon Flash'	Neon Flash Spirea	24"	Cont.	Full, well rooted plant, evenly shaped	60"
KSV	2	Viburnum carlesii	Fragrant Koreanspice Viburnum	36"	Cont.	Full, well rooted plant, evenly shaped	60"

PLANT KEY	QUANTITY	PLANT MATERIAL PROPOSED		CONTAINER SIZE	ROOT	SPECIFICATION / NOTES	PLANT SPACING
		BOTANICAL NAME	COMMON NAME				
ORNAMENTAL GRASSES							
KFRG	6	Calamagrostis acutiflora 'Karl Foerster'	Karl Foerster Feather Reed Grass	#1	Cont.	Full, well rooted plant	15-18"
RSG	9	Panicum virgatum 'Rotstrahlbusch'	Red Switch Grass	#1	Cont.	Full, well rooted plant	18"
PDS	14	Sporobolus heterolepis	Prairie Dropseed	#1	Cont.	Full, well rooted plant	18"

PLANT KEY	QUANTITY	PLANT MATERIAL PROPOSED		CONTAINER SIZE	ROOT	SPECIFICATION / NOTES	PLANT SPACING
		BOTANICAL NAME	COMMON NAME				
HERBACEOUS PERENNIALS							
HRD	10	Hemerocallis 'Happy Returns'	Happy Returns Daylily	#1	Cont.	Full, well rooted plant, evenly shaped	18"
RRD	5	Hemerocallis 'Rosy Returns'	Rosy Returns Daylily	#1	Cont.	Full, well rooted plant, evenly shaped	18"
PPCB	10	Heuchera micrantha 'Palace Purple'	Palace Purple Coralbells	#1	Cont.	Full, well rooted plant, evenly shaped	18"
BES	14	Rudbeckia fulgida 'Goldsturm'	Black-eyed Susan	#1	Cont.	Full, well rooted plant, evenly shaped	18"

Hardscape Materials							
14		Shredded Hardwood Mulch (3" depth)	Area: 1,475 SF		CY	Bark Mulch; apply Preemergent after installation of mulch	
9		Soil Amendments (2" depth)	Area: 1,475 SF		CY		
9		Pulverized Topsoil (2" over bed areas)	Area: 1,475 SF		CY		

*Landscape counts & quantities are provided as a service to the Landscape Contractor; Landscape Contractor is responsible for verifying these counts and quantities in order to provide a complete landscape installation as outlined on this Landscape Master Plan. In the event that a discrepancy occurs between this schedule and the Landscape Master Plan, the Landscape Master Plan- including the graphics and notations depicted therein- shall govern.

PLANT & MATERIAL SCHEDULE: 2 UNIT "B"

PLANT KEY	QUANTITY	PLANT MATERIAL PROPOSED		CAULP or HEIGHT	ROOT	SPECIFICATION / NOTES	PLANT SPACING
		BOTANICAL NAME	COMMON NAME				
Proposed Landscape Materials							
DECIDUOUS SHRUBS							
DF	6	Fothergilla gardenii	Dwarf Fothergilla	24"	B&B	Full, well rounded plant with moist rootball and healthy appearance	30"
LLH	6	Hydrangea paniculata 'Jane'	Little Lime Hydrangea	24"	Cont.	Full, well rooted plant, evenly shaped	42"
UH	2	Hydrangea paniculata 'Unique'	Unique Hydrangea	48"	Cont.	Full, well rooted plant, evenly shaped	60"
GMAC	6	Ribes alpinum 'Green Mound'	Green Mound Alpine Currant	24"	Cont.	Full, well rooted plant, evenly shaped	48"
PPSR	10	Rosa rugosa 'Pink Pavement'	Pink Pavement Series Rose	18"	Cont.	Full, well rooted plant, evenly shaped	42"
NFS	10	Spiraea xbumalda 'Neon Flash'	Neon Flash Spirea	24"	Cont.	Full, well rooted plant, evenly shaped	60"
MKL	2	Syringa patula 'Miss Kim'	Miss Kim Dwarf Lilac	36"	Cont.	Full, well rooted plant, evenly shaped	60"
WRW	5	Weigela florida 'Wine & Roses'	Wine & Roses Compact Weigela	24"	Cont.	Full, well rooted plant, evenly shaped	42"

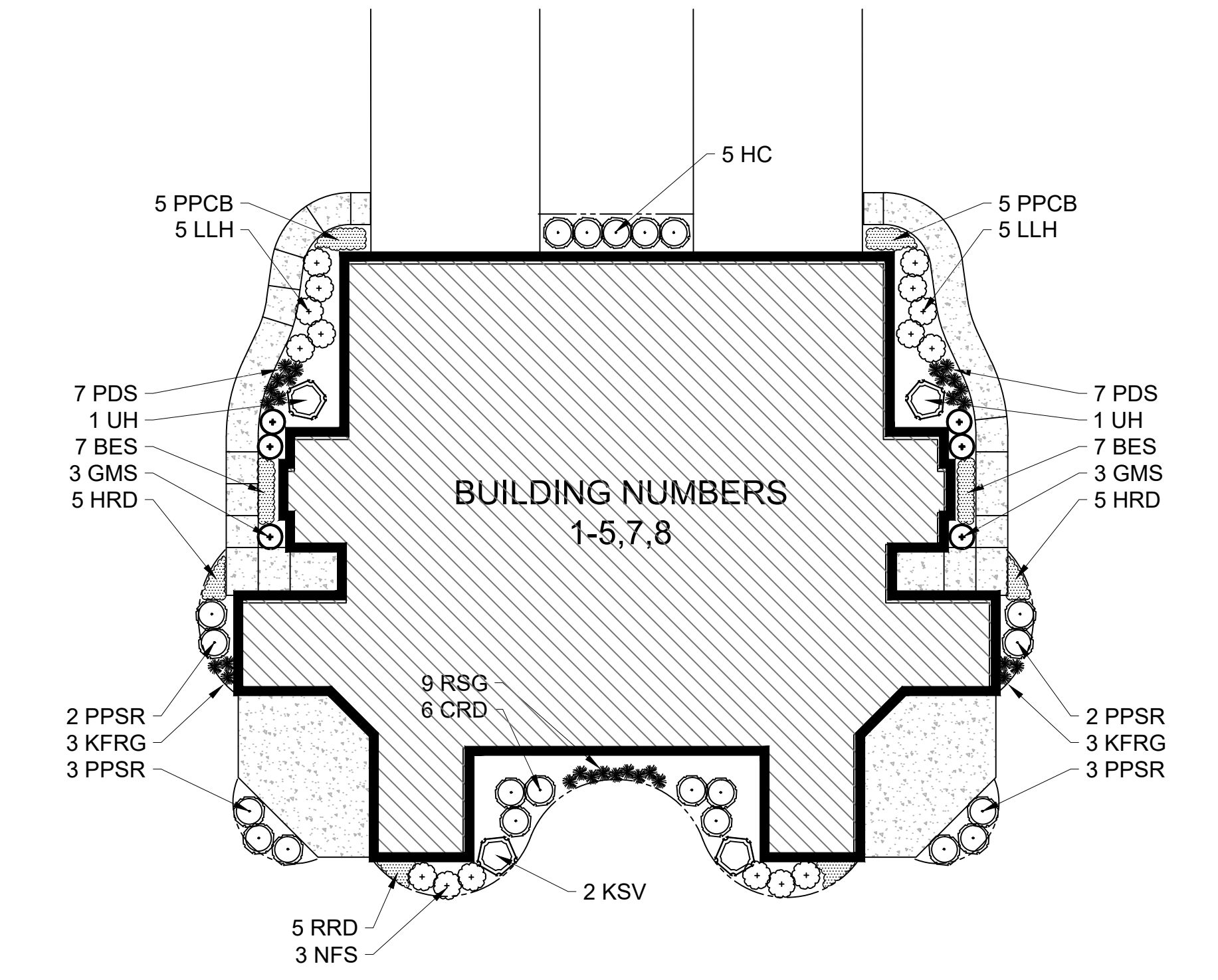
PLANT KEY	QUANTITY	PLANT MATERIAL PROPOSED		CONTAINER SIZE	ROOT	SPECIFICATION / NOTES	PLANT SPACING
		BOTANICAL NAME	COMMON NAME				
ORNAMENTAL GRASSES							
KFRG	6	Calamagrostis acutiflora 'Karl Foerster'	Karl Foerster Feather Reed Grass	#1	Cont.	Full, well rooted plant	15-18"
RSG	9	Panicum virgatum 'Rotstrahlbusch'	Red Switch Grass	#1	Cont.	Full, well rooted plant	18"
PDS	12	Sporobolus heterolepis	Prairie Dropseed	#1	Cont.	Full, well rooted plant	18"

PLANT KEY	QUANTITY	PLANT MATERIAL PROPOSED		CONTAINER SIZE	ROOT	SPECIFICATION / NOTES	PLANT SPACING
		BOTANICAL NAME	COMMON NAME				
HERBACEOUS PERENNIALS							
HRD	10	Hemerocallis 'Happy Returns'	Happy Returns Daylily	#1	Cont.	Full, well rooted plant, evenly shaped	18"
RRD	14	Hemerocallis 'Rosy Returns'	Rosy Returns Daylily	#1	Cont.	Full, well rooted plant, evenly shaped	18"
PPCB	10	Heuchera micrantha 'Palace Purple'	Palace Purple Coralbells	#1	Cont.	Full, well rooted plant, evenly shaped	18"
BES	14	Rudbeckia fulgida 'Goldsturm'	Black-eyed Susan	#1	Cont.	Full, well rooted plant, evenly shaped	18"

Hardscape Materials							
14		Shredded Hardwood Mulch (3" depth)	Area: 1,525 SF		CY	Bark Mulch; apply Preemergent after installation of mulch	
9		Soil Amendments (2" depth)	Area: 1,525 SF		CY		
9		Pulverized Topsoil (2" over bed areas)	Area: 1,525 SF		CY		

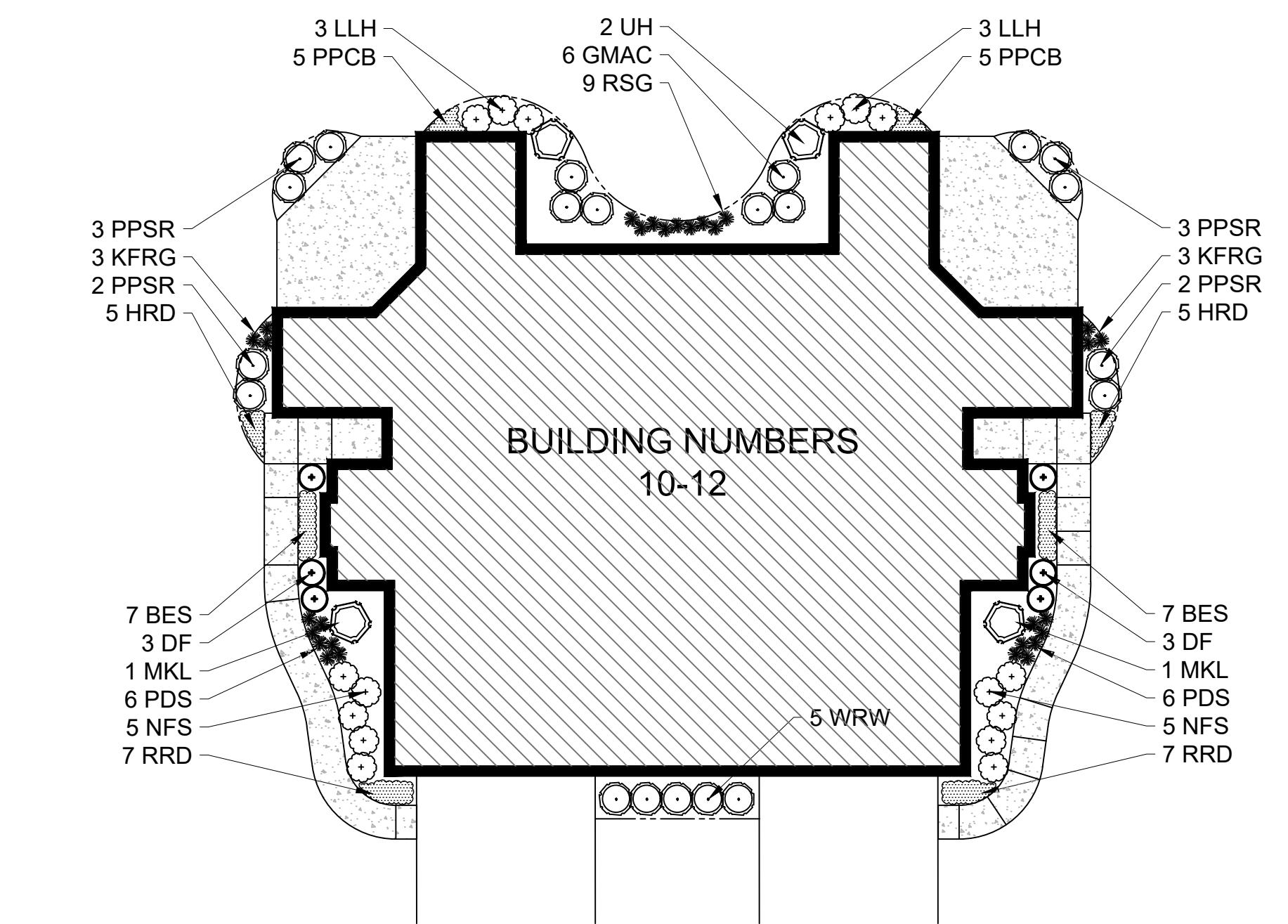
*Landscape counts & quantities are provided as a service to the Landscape Contractor; Landscape Contractor is responsible for verifying these counts and quantities in order to provide a complete landscape installation as outlined on this Landscape Master Plan. In the event that a discrepancy occurs between this schedule and the Landscape Master Plan, the Landscape Master Plan- including the graphics and notations depicted therein- shall govern.

PLANT & MATERIAL SCHEDULE: 2 UNIT "C"



FOUNDATION LANDSCAPE PLAN: 2 UNIT "B"

Scale: 1" = 16'0"



FOUNDATION LANDSCAPE PLAN: 2 UNIT "C"

Scale: 1" = 16'0"



PROJECT THE GLEN AT STANDING STONE

Tenny Avenue Waukesha, WI

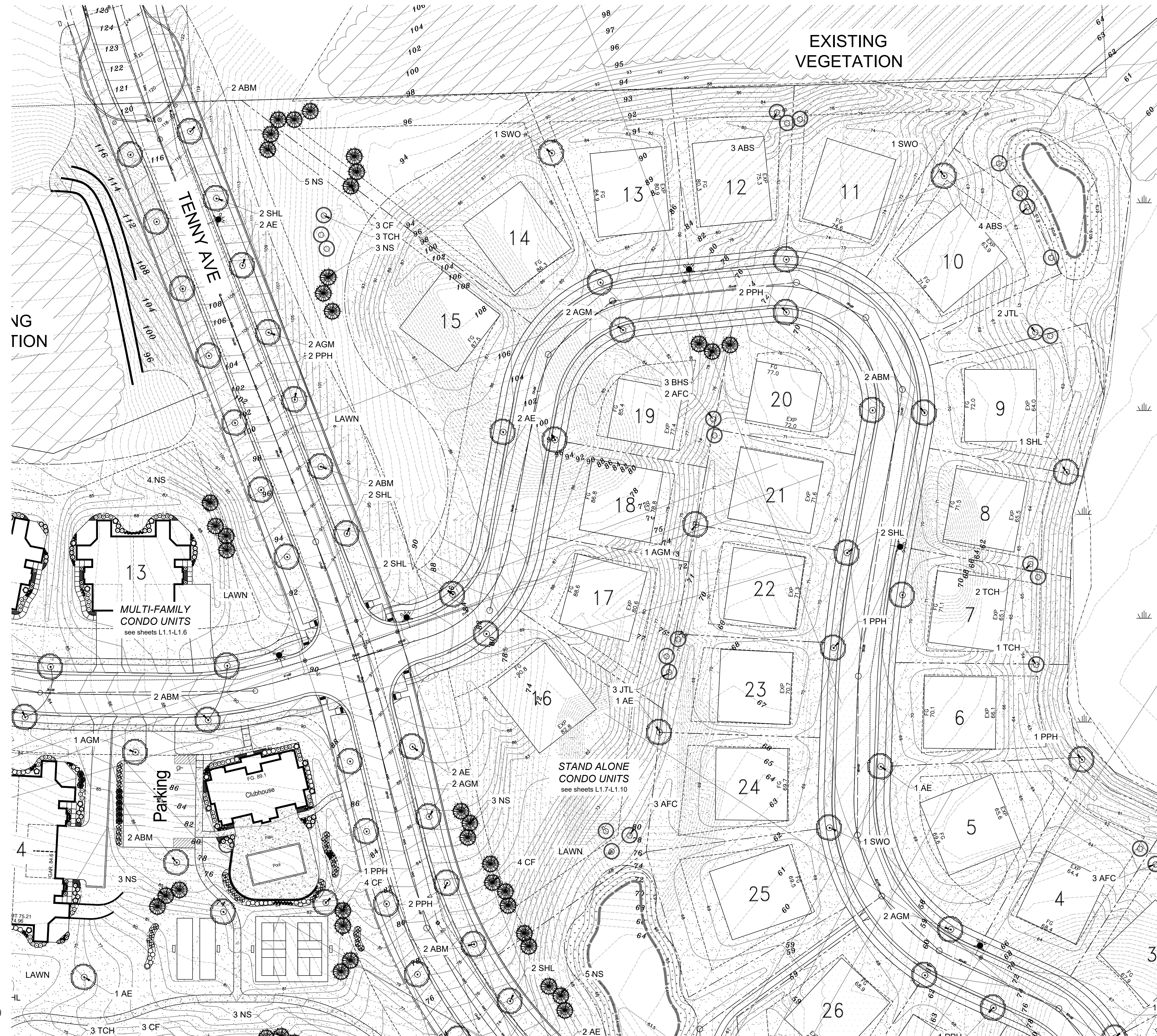
ISSUANCE AND REVISIONS	
DATE	DESCRIPTION
6.18.20	ISSUE TO OWNER
9.22.20	REVISED CIVIL
10.08.20	REV. PLANTING PLAN
10.15.20	REV. PLANTING PLAN
11.13.20	REVISED CIVIL

Information contained herein is based on survey information, field inspection, and believed to be accurate.

SHEET TITLE FOUNDATION LANDSCAPE PLANS: 2 UNIT BUILDINGS

PROJECT MANAGER	WDH
PROJECT NUMBER	20-041
DATE	11.13.20
SHEET NUMBER	

L 1.6



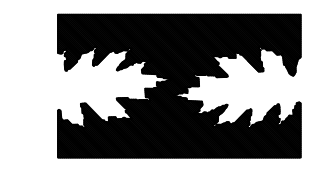
- SHADE TREES (DECIDUOUS)**
- ABM Autumn Blaze Maple
 - PPH Prairie Pride Hackberry
 - SHL Skyline Honeylocust
 - AGM Autumn Gold Maidenhair
 - SWO Swamp White Oak
 - AE Accolade Elm

- ORNAMENTAL TREES (DECIDUOUS)**
- ABS Autumn Brilliance Serviceberry
 - TCH Thornless Cocksbur Hawthorn
 - AFC Adams Flowering Crabapple
 - JTL Ivory Silk Japanese Tree Lilac

- EVERGREEN TREES**
- CF Concolor Fir
 - FVJ Fairview Upright Juniper (upright)
 - NS Norway Spruce
 - BHS Black Hills Spruce

PLANT ABBREVIATIONS

HELLER & ASSOCIATES, LLC
 LANDSCAPE ARCHITECTURE
 P.O. Box 1359
 Lake Geneva, Wisconsin 53147-1359
 ph 262.639.9733
 david@wdavidheller.com
 www.wdavidheller.com



PROJECT
THE GLEN AT STANDING STONE

Tenny Avenue Waukesha, WI

ISSUANCE AND REVISIONS

DATE	DESCRIPTION
6.18.20	ISSUE TO OWNER
9.22.20	REVISED CIVIL
10.08.20	REV. PLANTING PLAN
10.15.20	REV. PLANTING PLAN
11.13.20	REVISED CIVIL

Information contained herein is based on survey information, field inspection, and believed to be accurate.

SHEET TITLE
ENLARGED LANDSCAPE PLAN: NORTHEAST

PROJECT MANAGER WDH
PROJECT NUMBER 20-041
DATE 11.13.20
SHEET NUMBER

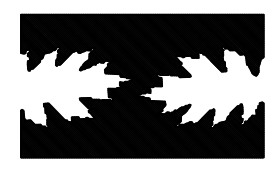
ENLARGED LANDSCAPE PLAN
 Scale: 1" = 40'0"

L 1.7



- SHADE TREES (DECIDUOUS)**
- ABM Autumn Blaze Maple
 - PPH Prairie Pride Hackberry
 - SHL Skyline Honeylocust
 - AGM Autumn Gold Maidenhair
 - SWO Swamp White Oak
 - AE Accolade Elm
- ORNAMENTAL TREES (DECIDUOUS)**
- ABS Autumn Brilliance Serviceberry
 - TCH Thornless Cocksaur Hawthorn
 - AFC Adams Flowering Crabapple
 - JTL Ivory Silk Japanese Tree Lilac
- EVERGREEN TREES**
- CF Concolor Fir
 - FVJ Fairview Upright Juniper (upright)
 - NS Norway Spruce
 - BHS Black Hills Spruce
- PLANT ABBREVIATIONS**

HELLER & ASSOCIATES, LLC
 LANDSCAPE ARCHITECTURE
 P.O. Box 1359
 Lake Geneva, Wisconsin 53147-1359
 ph 262.639.9733
 david@wdavidheller.com
 www.wdavidheller.com



PROJECT
**THE GLEN AT
 STANDING
 STONE**

Tenny Avenue
 Waukesha, WI

ISSUANCE AND REVISIONS

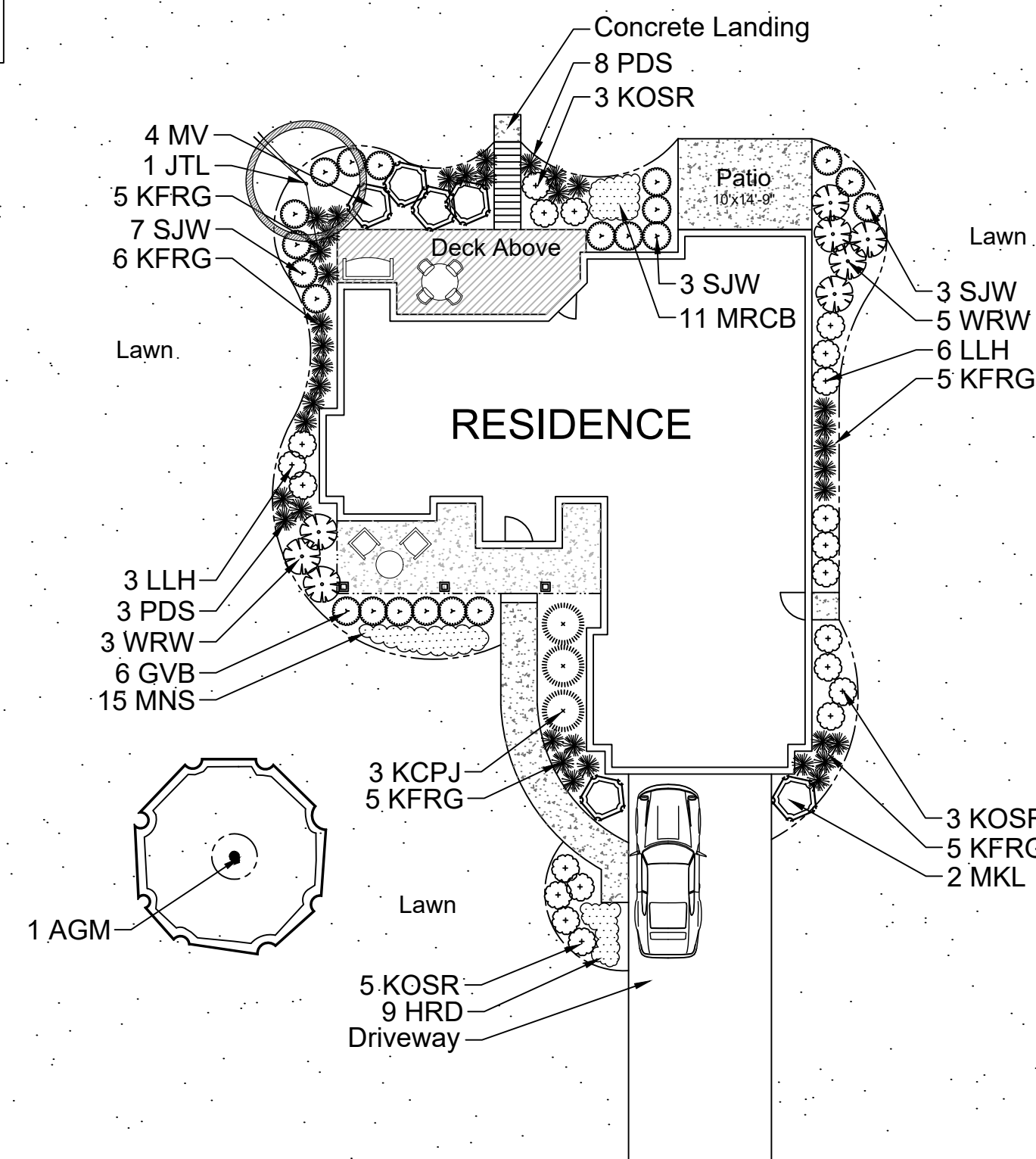
DATE	DESCRIPTION
6.18.20	ISSUE TO OWNER
9.22.20	REVISED CIVIL
10.08.20	REV. PLANTING PLAN
10.15.20	REV. PLANTING PLAN
11.13.20	REVISED CIVIL

SHEET TITLE
**ENLARGED
 LANDSCAPE
 PLAN:
 SOUTHEAST**

PROJECT MANAGER WDH
 PROJECT NUMBER 20-041
 DATE 11.13.20
 SHEET NUMBER

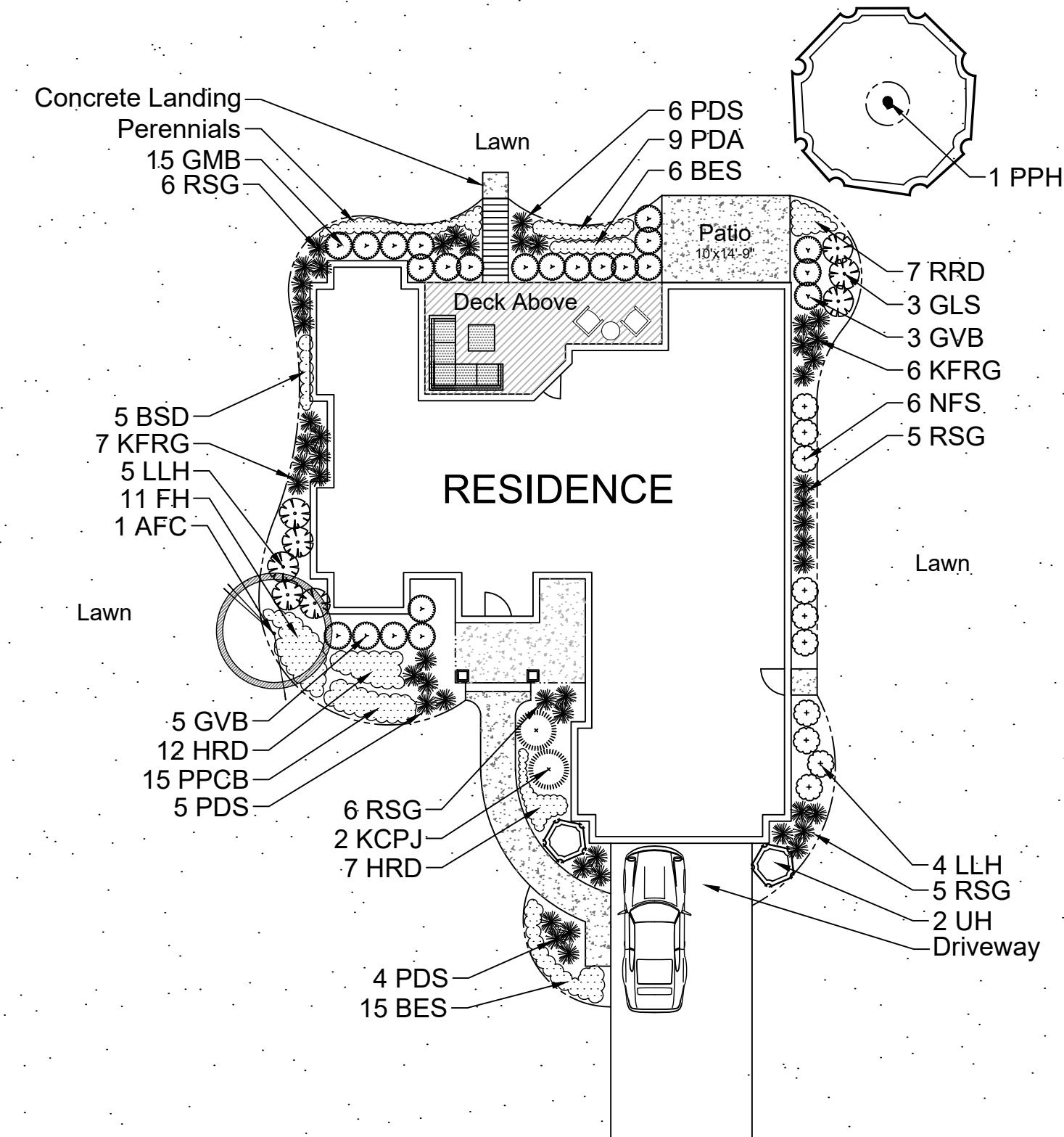
ENLARGED LANDSCAPE PLAN
 Scale: 1" = 40'0"
 NORTH

L 1.8



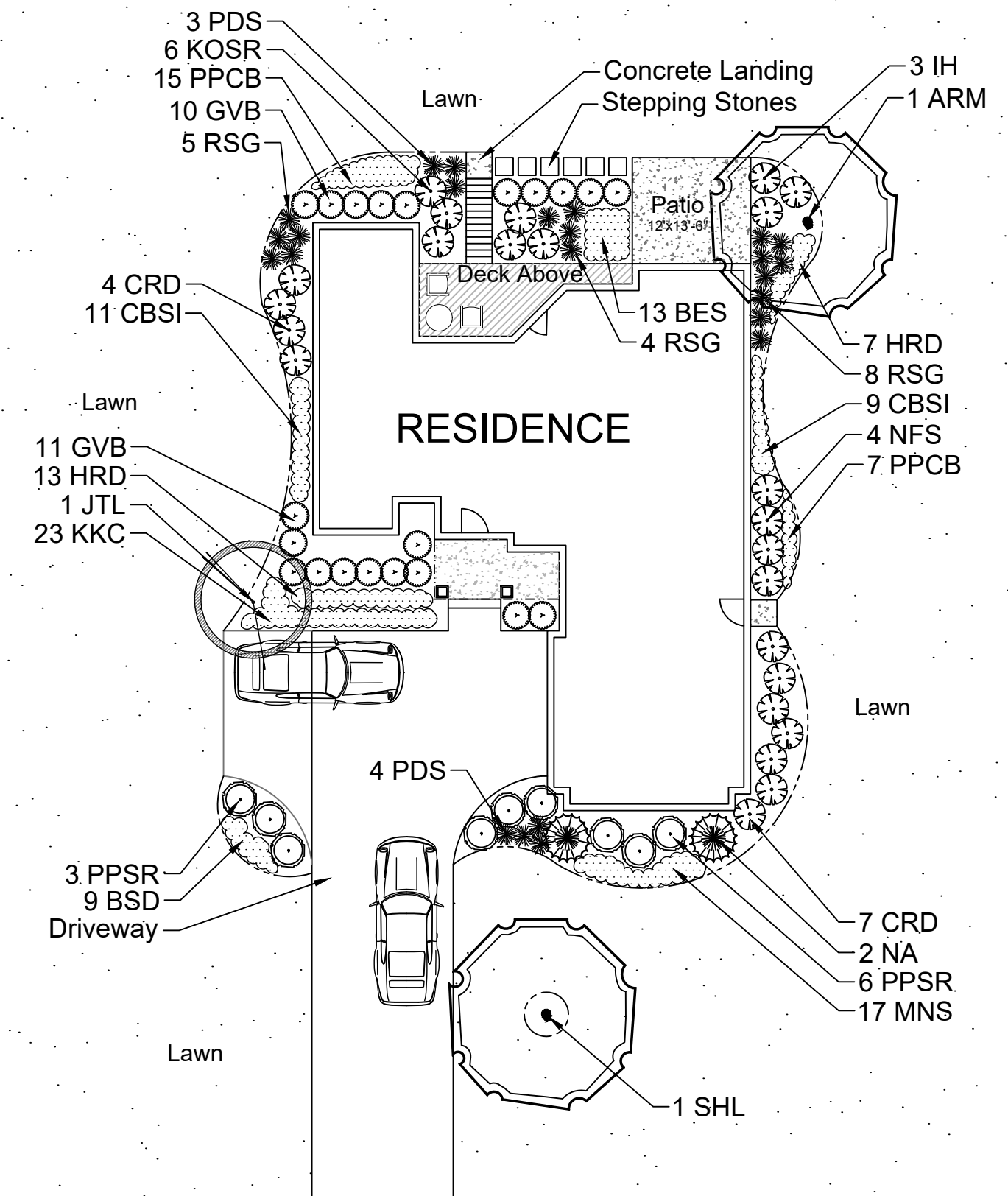
FOUNDATION LANDSCAPE PLAN: UNIT "A"

Scale: 1" = 16'0"



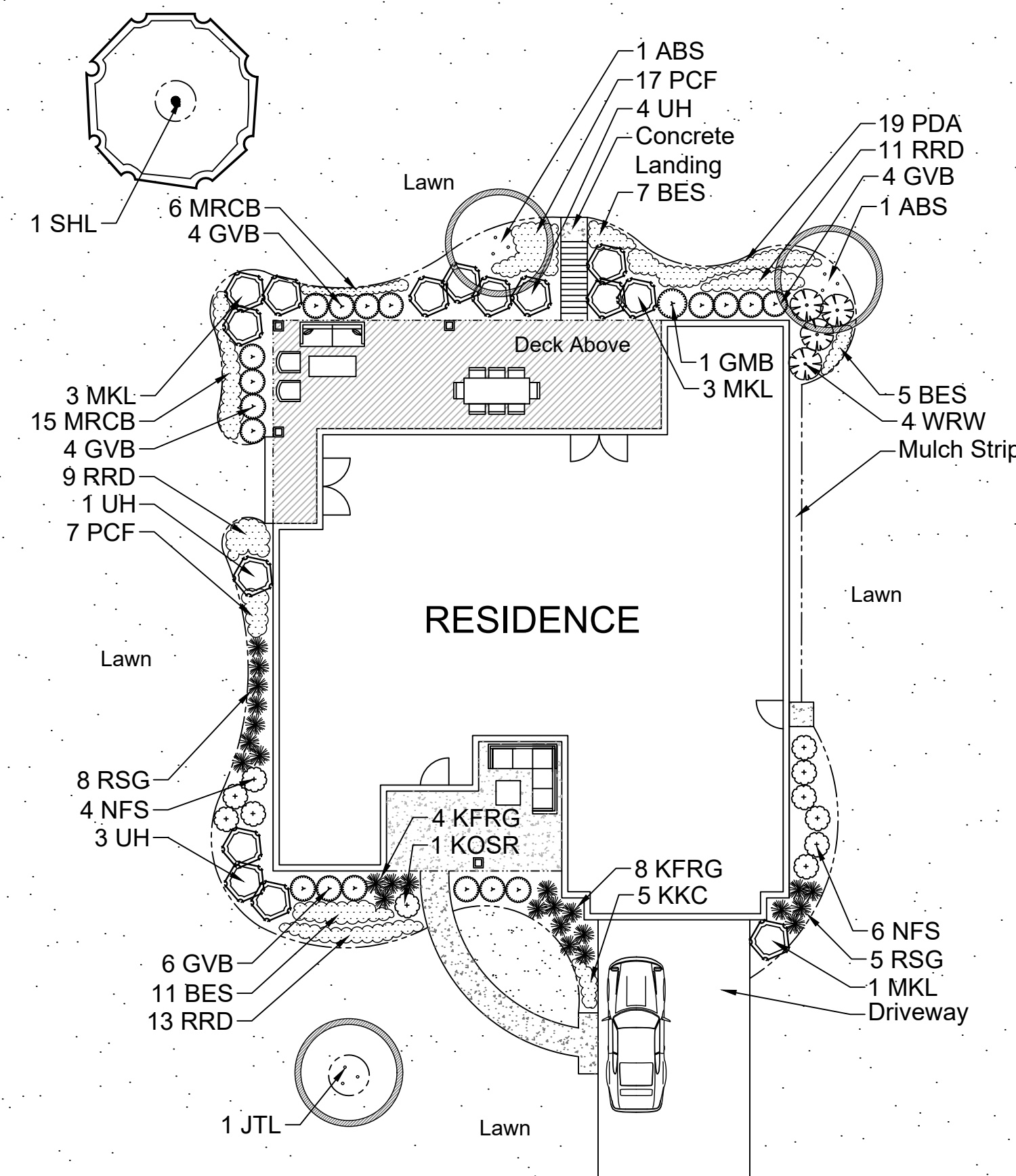
FOUNDATION LANDSCAPE PLAN: UNIT "B"

Scale: 1" = 16'0"



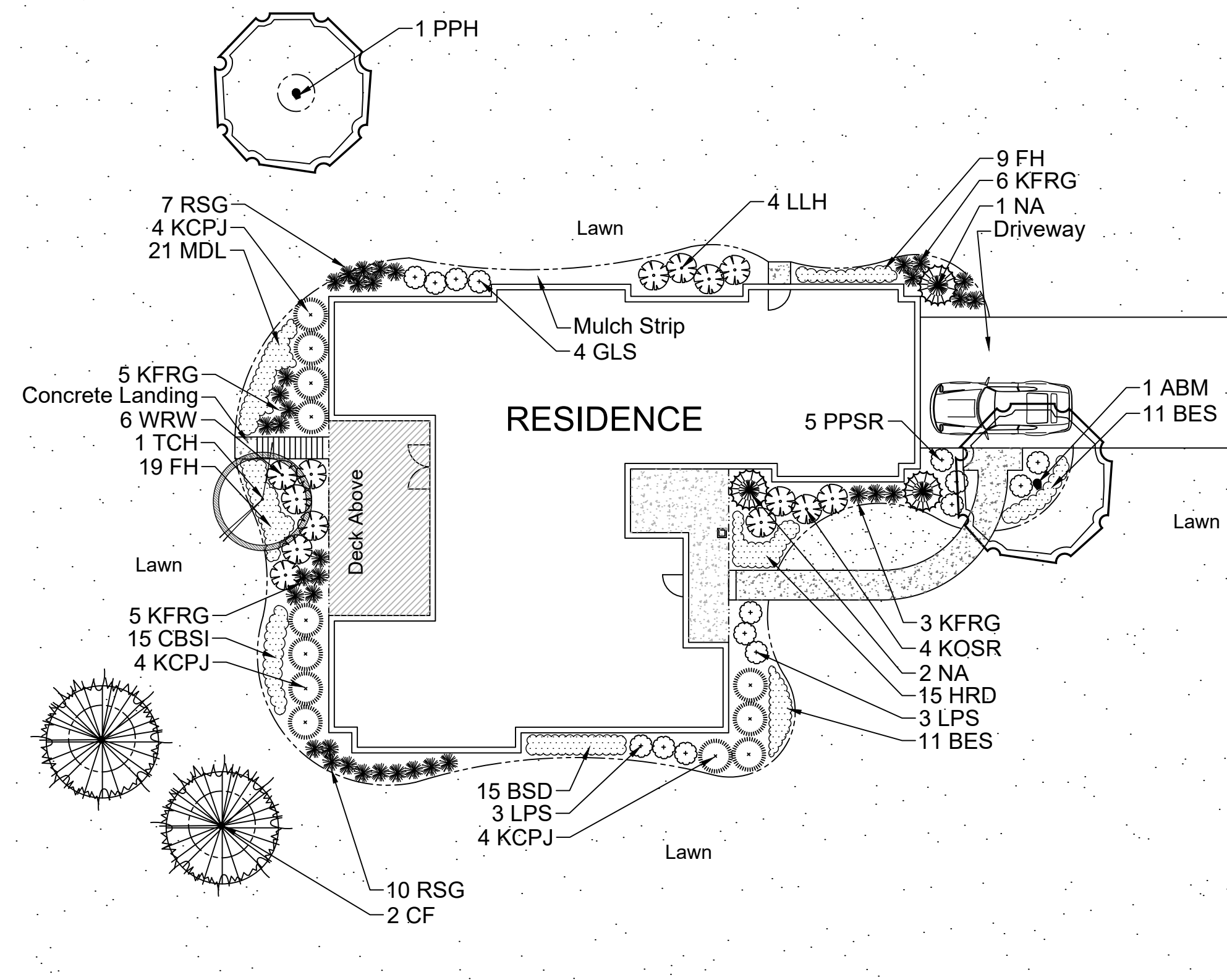
FOUNDATION LANDSCAPE PLAN: UNIT "C"

Scale: 1" = 16'0"



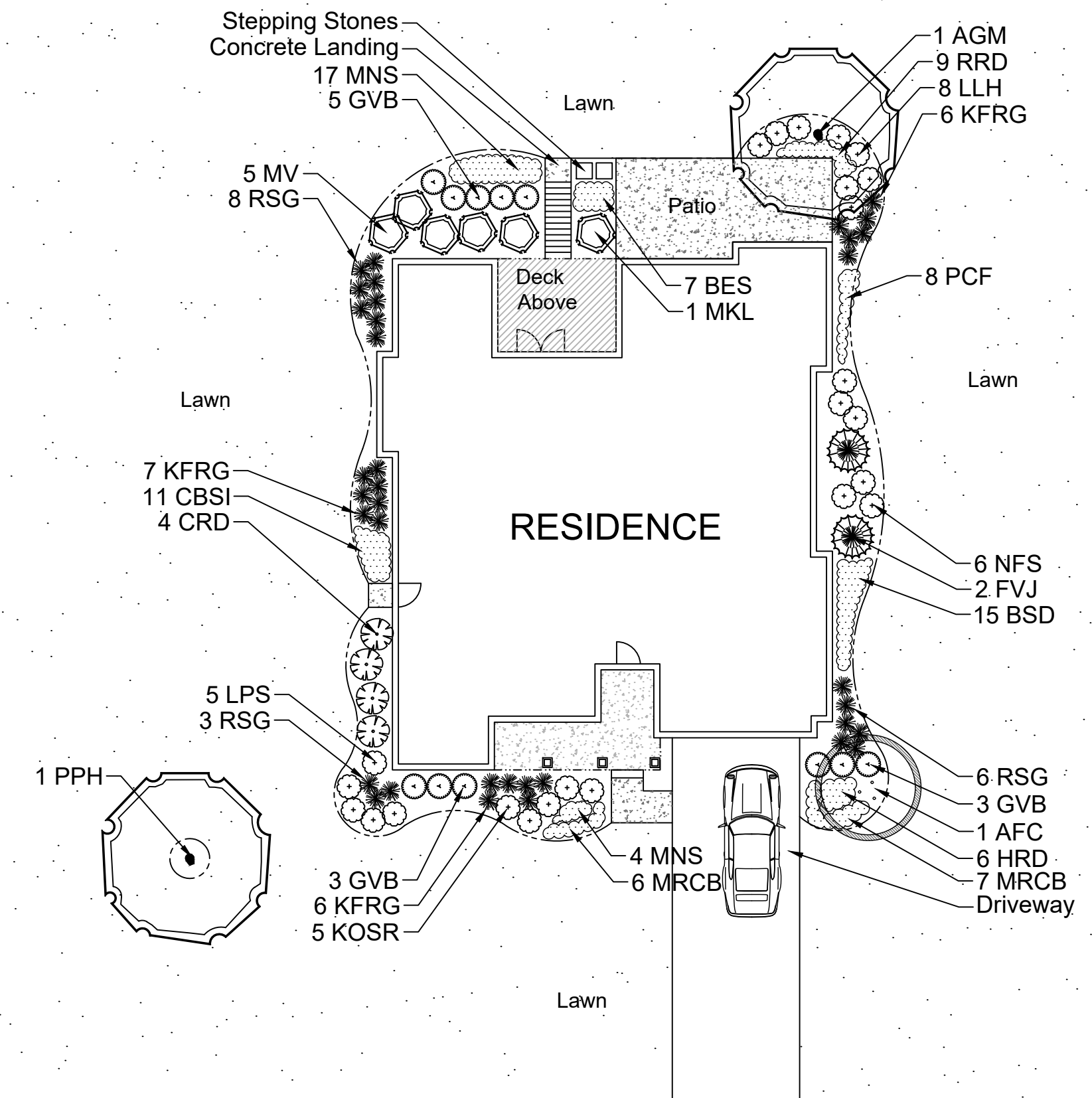
FOUNDATION LANDSCAPE PLAN: UNIT "D"

Scale: 1" = 16'0"



FOUNDATION LANDSCAPE PLAN: UNIT "E"

Scale: 1" = 16'0"



FOUNDATION LANDSCAPE PLAN: UNIT "F"

Scale: 1" = 16'0"



PROJECT

THE GLEN AT STANDING STONE

Tenny Avenue
Waukesha, WI

ISSUANCE AND REVISIONS

DATE	DESCRIPTION
6.18.20	ISSUE TO OWNER
9.22.20	REVISED CIVIL
10.08.20	REV. PLANTING PLAN
10.15.20	REV. PLANTING PLAN
11.13.20	REVISED CIVIL

Information contained herein is based on survey information, field inspection, and believed to be accurate.

SHEET TITLE

FOUNDATION LANDSCAPE PLANS: SINGLE FAMILY UNITS

PROJECT MANAGER WDH

PROJECT NUMBER 20-041

DATE 11.13.20

SHEET NUMBER

L 1.9



PLANT KEY	QUANTITY	PLANT MATERIAL PROPOSED		CALIPER or HEIGHT	ROOT	SPECIFICATION / NOTES	PLANT SPACING
		BOTANICAL NAME	COMMON NAME				
Proposed Landscape Materials							
SHADE TREES (DECIDUOUS)							
ABM	25	Acer xfreemanii 'Autumn Blaze'	Autumn Blaze Maple	2.5"	B&B	Straight central leader, full and even crown. Prune only after planting	
PPH	24	Celtis occidentalis 'Prairie Pride'	Prairie Pride Hackberry	2.5"	B&B	Straight central leader, full and even crown. Prune only after planting	
SHL	26	Gleditsia triacanthos 'Skyline'	Skyline Honeylocust	2.5"	B&B	Straight central leader, full and even crown. Prune only after planting	
AGM	22	Ginkgo biloba 'Autumn Gold'	Autumn Gold Maidenhair	2.5"	B&B	Straight central leader, full and even crown. Prune only after planting	
SWO	11	Quercus bicolor	Swamp White Oak	2.5"	B&B	Straight central leader, full and even crown. Prune only after planting	
AE	22	Ulmus 'Morton' Accolade	Accolade Elm	2.5"	B&B	Straight central leader, full and even crown. Prune only after planting	

PLANT KEY	QUANTITY	PLANT MATERIAL PROPOSED		CALIPER or HEIGHT	ROOT	SPECIFICATION / NOTES	PLANT SPACING
		BOTANICAL NAME	COMMON NAME				
ORNAMENTAL TREES (DECIDUOUS)							
ABS	22	Amelanchier xgrandiflora 'Autumn Brilliance'	Autumn Brilliance Serviceberry	7-8" H	B&B	Well balanced multi-stemmed tree with minimum four canes, and full appearance	
TCH	24	Crataegus crus-galli 'Inermis'	Thornless Cockspur Hawthorn	7-8" H	B&B	Well balanced multi-stemmed tree with minimum four canes, and full appearance	
AFC	24	Malus x 'Adams'	Adams Flowering Crabapple	7-8" H	B&B	Well balanced multi-stemmed tree with minimum four canes, and full appearance	
JTL	22	Syringa reticulata 'Ivory Silk'	Ivory Silk Japanese Tree Lilac	7-8" H	B&B	Well balanced multi-stemmed tree with minimum four canes, and full appearance	

PLANT KEY	QUANTITY	PLANT MATERIAL PROPOSED		HEIGHT SIZE	ROOT	SPECIFICATION / NOTES	PLANT SPACING
		BOTANICAL NAME	COMMON NAME				
EVERGREEN TREES							
CF	42	Abies concolor	Concolor Fir	7-8" H	B&B	Evenly shaped tree with branching to the ground	15'
FVJ	13	Juniperus chinensis 'Fairview'	Fairview Upright Juniper (upright)	6" H	B&B	Evenly shaped tree with branching to the ground	42"
NS	62	Picea abies	Norway Spruce	8" H	B&B	Evenly shaped tree with branching to the ground	17'
BHS	32	Picea glauca 'densata'	Black Hills Spruce	8" H	B&B	Evenly shaped tree with branching to the ground	15'

PLAN KEY	QUANTITY	PLANT MATERIAL PROPOSED		CONTAINER SIZE	SPECIFICATION / NOTES	PLANT SPACING
		SPECIFIED SEED MIX / SOD	COMMON NAME			
LAWN	100000	Lawn Establishment Area / Grading Area		5F	Reinder's Deluxe 50 Seed Mix (800-785-3301)	
SWSM	57635	Stormwater Seed Mix	see plan for area delineation	5F	Cardno Native Plant Nursery (574-586-2412)	
PRAIRIE	13550	Infiltration Basin Seed Mix	see plan for area delineation	5F	Cardno Native Plant Nursery (574-586-2412)	
	1071185	Erosion Matting for sloped seeded areas	see plan for area delineation	5F	EroTex DS75 Erosion Control Blanket (or approved equal)	

PLANT KEY	QUANTITY	PLANT MATERIAL PROPOSED		CONTAINER SIZE	SPECIFICATION / NOTES	PLANT SPACING
		SPECIFIED SEED MIX / SOD	COMMON NAME			
97		Shredded Hardwood Mulch (3" depth)	Area: 10,460 SF	CY	Bark Mulch; apply Preemergent after installation of mulch	
64		Soil Amendments (2" depth)	Area: 10,460 SF	CY		
3293		Pulverized Topsoil (Lawn Area)	Area: 1,071,185 SF	CY		
64		Pulverized Topsoil (2" over bed areas)	Area: 10,460 SF	CY		

*Landscape counts & quantities are provided as a service to the Landscape Contractor; Landscape Contractor is responsible for verifying these counts and quantities in order to provide a complete landscape installation as outlined on this Landscape Master Plan. In the event that a discrepancy occurs between this schedule and the Landscape Master Plan, the Landscape Master Plan-including the graphics and notations depicted therein-shall govern.

Seed Compositions:	Reinder's Deluxe 50 Seed Mix (800-785-3301):	Seed at rate of 150-200# per acre
20% Kentucky Bluegrass (Sod Quality)	15% Quebec Perennial Ryegrass	
15% Newport Kentucky Bluegrass	10% Fiesta III Perennial Ryegrass	
15% Ken Blue Kentucky Bluegrass		
25% Creeping Red Fescue		

PLANT & MATERIAL SCHEDULE: SITE

PLANT KEY	QUANTITY	PLANT MATERIAL PROPOSED		CALIPER or HEIGHT	ROOT	SPECIFICATION / NOTES	PLANT SPACING
		BOTANICAL NAME	COMMON NAME				
Proposed Landscape Materials							
SHADE TREES (DECIDUOUS)							
ARM		Acer xfreemanii 'Armstrong'	Armstrong Red Maple	2.5"	B&B	Straight central leader, full and even crown. Prune only after planting	
ABM		Acer xfreemanii 'Autumn Blaze'	Autumn Blaze Maple	2.5"	B&B	Straight central leader, full and even crown. Prune only after planting	
PPH		Celtis occidentalis 'Prairie Pride'	Prairie Pride Hackberry	2.5"	B&B	Straight central leader, full and even crown. Prune only after planting	
SHL		Gleditsia triacanthos 'Skyline'	Skyline Honeylocust	2.5"	B&B	Straight central leader, full and even crown. Prune only after planting	
AGM		Ginkgo biloba 'Autumn Gold'	Autumn Gold Maidenhair	2.5"	B&B	Straight central leader, full and even crown. Prune only after planting	

PLANT KEY	QUANTITY	PLANT MATERIAL PROPOSED		HEIGHT SIZE	ROOT	SPECIFICATION / NOTES	PLANT SPACING
		BOTANICAL NAME	COMMON NAME				
ORNAMENTAL TREES (DECIDUOUS)							
ABS		Amelanchier xgrandiflora 'Autumn Brilliance'	Autumn Brilliance Serviceberry	7-8" H	B&B	Well balanced multi-stemmed tree with minimum four canes, and full appearance	
TCH		Crataegus crus-galli 'Inermis'	Thornless Cockspur Hawthorn	7-8" H	B&B	Well balanced multi-stemmed tree with minimum four canes, and full appearance	
AFC		Malus x 'Adams'	Adams Flowering Crabapple	7-8" H	B&B	Well balanced multi-stemmed tree with minimum four canes, and full appearance	
JTL		Syringa reticulata 'Ivory Silk'	Ivory Silk Japanese Tree Lilac	7-8" H	B&B	Well balanced multi-stemmed tree with minimum four canes, and full appearance	

PLANT KEY	QUANTITY	PLANT MATERIAL PROPOSED		SHRUB SIZE (HEIGHT)	ROOT/CONT.	SPECIFICATION / NOTES
		BOTANICAL NAME	COMMON NAME			
EVERGREEN TREES						
CF		Abies concolor	Concolor Fir	7-8" H	B&B	Evenly shaped tree with branching to the ground
FVJ		Juniperus chinensis 'Fairview'	Fairview Upright Juniper (upright)	6" H	B&B	Evenly shaped tree with branching to the ground
NS		Picea abies	Norway Spruce	72" H	B&B	Evenly shaped tree with branching to the ground

PLANT KEY	QUANTITY	PLANT MATERIAL PROPOSED		SHRUB SIZE (HEIGHT)	ROOT/CONT.	SPECIFICATION / NOTES
		BOTANICAL NAME	COMMON NAME			
EVERGREEN SHRUBS						
GMB		Buxus 'Green Mountain'	Green Mountain Boxwood	36"	B&B	Full rounded well branched shrub
GBS		Buxus 'Green Velvet'	Green Velvet Boxwood	24"	Cont.	Full rounded well branched shrub
KCFJ		Juniperus chinensis 'Kallia'	Kallia Compact Pfezter Juniper	24"w	Cont.	Full rounded well branched shrub

PLANT KEY	QUANTITY	PLANT MATERIAL PROPOSED		SHRUB SIZE (HEIGHT)	ROOT/CONT.	SPECIFICATION / NOTES
		BOTANICAL NAME	COMMON NAME			
DECIDUOUS SHRUBS						
CRD		Cornus sericea 'Cardinal'	Cardinal Redtwig Dogwood	42"	Cont.	Full, well rooted plant, evenly shaped
IH		Hydrangea arborescens 'Abetwo'	Incredball Hydrangea	85"	Cont.	Full, well rooted plant, evenly shaped
LH		Hydrangea paniculata 'Jaipe'	Little Lime Hydrangea	24"	Cont.	Full, well rooted plant, evenly shaped
ULH		Hydrangea paniculata 'Unique'	Unique Hydrangea	48"	Cont.	Full, well rooted plant, evenly shaped
SIW		Syringa reticulata 'Ivory Silk'	Ivory Silk Japanese Tree Lilac	24"	Cont.	Full, well rooted plant, evenly shaped
GLS		Rhus aromatica 'Gro-Low'	Gro Low Fragrant Sumac	18-24"	Cont.	Full, well rooted plant, evenly shaped
KOSR		Rosa 'Knock Out'	Knock Out Shrub Rose	18"	Cont.	Full, well rooted plant, evenly shaped
PPSR		Rosa rugosa 'Pink Pavement'	Pink Pavement Series Rose	18"	Cont.	Full, well rooted plant, evenly shaped
SPS		Spiraea japonica 'Little Princess'	Little Princess Spiraea	18-24"	Cont.	Full, well rooted plant, evenly shaped
NFS		Nyssa sibirica 'New York Spirea'	New York Spirea	24"	Cont.	Full, well rooted plant, evenly shaped
MKL		Syringa patula 'Miss Kim'	Miss Kim Dwarf Lilac	36"	Cont.	Full, well rooted plant, evenly shaped
MV		Viburnum lantana 'Mohican'	Mohican Viburnum	48"	B&B	Full, well rounded plant with moist rootball and healthy appearance
WRW		Weigelia florida 'Wine & Roses'	Wine & Roses Compact Weigela	24"	Cont.	Full, well rooted plant, evenly shaped

PLANT KEY	QUANTITY	PLANT MATERIAL PROPOSED		CONTAINER SIZE	SPECIFICATION / NOTES
		SPECIFIED SEED MIX / SOD	COMMON NAME		
LAWN		Lawn Establishment Area / Grading Area		5F	Reinder's Deluxe 50 Seed Mix (800-785-3301)

PLANT KEY	QUANTITY	PLANT MATERIAL PROPOSED		CONTAINER SIZE	SPECIFICATION / NOTES
		SPECIFIED SEED MIX / SOD	COMMON NAME		
97		Shredded Hardwood Mulch (3" depth)	Area: 10,460 SF	CY	Bark Mulch; apply Preemergent after installation of mulch
64		Soil Amendments (2" depth)	Area: 10,460 SF	CY	
3293		Pulverized Topsoil (Lawn Area)	Area: 1,071,185 SF	CY	
64		Pulverized Topsoil (2" over bed areas)	Area: 10,460 SF	CY	

*Landscape counts & quantities are provided as a service to the Landscape Contractor; Landscape Contractor is responsible for verifying these counts and quantities in order to provide a complete landscape installation as outlined on this Landscape Master Plan. In the event that a discrepancy occurs between this schedule and the Landscape Master Plan, the Landscape Master Plan-including the graphics and notations depicted therein-shall govern.

Seed Compositions:	Reinder's Deluxe 50 Seed Mix (800-785-3301):	Seed at rate of 150-200# per acre
20% Kentucky Bluegrass (Sod Quality)	15% Quebec Perennial Ryegrass	
15% Newport Kentucky Bluegrass	10% Fiesta III Perennial Ryegrass	
15% Ken Blue Kentucky Bluegrass		
25% Creeping Red Fescue		

PLANT & MATERIAL SCHEDULE: S.F. UNITS

1 DETAIL SHADE TREE PLANTING
N.T.S. SECTION

2 DETAIL DECIDUOUS SHRUB PLANTING (POTTED)
N.T.S. SECTION

3 DETAIL EVERGREEN SHRUB PLANTING
N.T.S. SECTION

4 DETAIL SPADE EDGE PLANT BED EDGE DETAIL
N.T.S. SECTION

5 DETAIL EVERGREEN TREE PLANTING
N.T.S. SECTION

6 DETAIL DECIDUOUS SHRUB PLANTING (B&B)
N.T.S. SECTION

7 DETAIL GROUNDCOVER / PERENNIAL PLANTING
N.T.S. SECTION

8 DETAIL ORNAMENTAL GRASS PLANTING
N.T.S. SECTION

PLANTING & HARDSCAPE DETAILS



PROJECT THE GLEN AT STANDING STONE

Tenny Avenue Waukesha, WI

DATE	DESCRIPTION
6.18.20	ISSUE TO OWNER
9.22.20	REVISED CIVIL
10.08.20	REV. PLANTING PLAN
10.15.20	REV. PLANTING PLAN
11.13.20	REVISED CIVIL

Information contained herein is based on survey information, field inspection, and believed to be accurate.

SHEET TITLE LANDSCAPE SCHEDULES (SITE AND SINGLE FAMILY UNITS) & DETAILS

PROJECT MANAGER	WDH
PROJECT NUMBER	20-041
DATE	11.13.20
SHEET NUMBER	

L 1.10



PLANT ABBREVIATIONS

- Contractor responsible for contacting Diggers Hotline (811 or 800-242-8511) to have site marked prior to excavation or planting.
- Contractor to verify all plant quantities shown on Plant & Material List and landscape planting symbols and report any discrepancies to Landscape Architect or General Contractor.
- All plantings shall comply with standards as described in American Standard of Nursery Stock - Z60.1 ANSI (latest version). Landscape Architect reserves the right to inspect, and potentially reject any plants that are inferior, compromised, undersized, diseased, improperly transported, installed incorrectly or damaged. No sub-standard "B Grade" or "Park Grade" plant material shall be accepted. Plant material shall originate from nursery(ies) with a similar climate as the planting site.
- Any potential plant substitutions must be approved by Landscape Architect or Owner. All plants must be installed as per sizes indicated on Plant & Material Schedule, unless approved by Landscape Architect. Any changes to sizes shown on plan must be submitted in writing to the Landscape Architect prior to installation.
- Topsoil in Parking Lot Islands (if applicable): All parking lot islands to be backfilled with topsoil to a minimum depth of 18" to insure long-term plant health. Topsoil should be placed within 3" of finish grade by General Contractor / Excavation Contractor during rough grading operations/activity. The landscape contractor shall be responsible for the fine grading of all disturbed areas, planting bed areas, and lawn areas. Crown all parking lot islands a minimum of 6" to provide proper drainage, unless otherwise specified.
- Tree Planting: Plant all trees slightly higher than finished grade at the root flare. Remove excess soil from the top of the root ball, if needed. Remove and discard non-biodegradable ball wrapping and support wire. Remove biodegradable burlap and wire cage (if present) from the top 1/3 of the rootball and carefully bend remaining wire down to the bottom of the hole. Once the tree has been placed into the hole and will no longer be moved, score the remaining 2/3 of the burlap and remove the twine. Provide three slow release fertilizer for each tree planted.
- Tree Planting: Backfill tree planting holes 80% existing soils removed from excavation and 20% plant starter mix. Avoid air pockets and do not tamp soil down. Discard any gravel, rocks, heavy clay, or concrete pieces. When hole is 1/2 full, trees shall be watered thoroughly, and water left to soak in before proceeding to fill the remainder of the hole. Water again to full soak in the new planting. Each tree shall receive a 3" deep, 4-5" diameter (see planting details or planting plan) shredded hardwood bark mulch ring around all trees planted in lawn areas. Do not build up any mulch onto the trunk of any tree. Trees that are installed incorrectly will be replaced at the time and expense of the Landscape Contractor.
- Shrub Planting: All shrubs to be planted in groupings as indicated on the Landscape Plan. Install with the planting of shrubs a 2/3 mix of plant starter with topsoil. Install topsoil into all plant beds as needed to achieve proper grade and displace undesirable soil (see planting detail). Remove all excessive gravel, clay and stones from plant beds prior to planting. When hole(s) are 3/4 full, shrubs shall be watered thoroughly, and water left to soak in before proceeding. Provide slow-release fertilizer packets at the rate of 1 per 24" height/diameter of shrub at planting.
- Mulching: All tree and shrub planting beds to receive a 3" deep layer of high quality shredded hardwood bark mulch (not pigment dyed or enviro-mulch). All perennial planting areas (groupings) shall receive a 2" layer of shredded hardwood bark mulch, and groundcover areas a 1-2" layer of the same mulch. Do not mulch annual flower beds (if applicable). Do not allow mulch to contact plant stems and tree trunks.
- Edging: All planting beds shall be edged with a 4" deep spade edge using a flat landscape spade or a mechanical edger. Bedlines are to be cut crisp, smooth as per plan. A clean definition between landscape beds and lawn is required. Pack mulch against lawn edge to hold in place.
- Plant bed preparation/Soil Amendment composition: All perennial, groundcover and annual areas (if applicable) are required to receive a blend of organic soil (Soil Amendments) amendments prior to installation. Roto-till the following materials at the following ratio, into existing soil beds or installed topsoil beds to a depth of approximately 8"-10". Containerized and balled & burlapped plant material should be back-filled with amended soil:
 Per 100 SF of bed area (Soil Amendment composition):
 1/2 CY Peat Moss or Mushroom Compost
 1/4 CY blended/pulverized Topsoil
 1/4 CY composted manure
 In roto-tilled beds only, also include in above mixture:
 2 lbs Starter Fertilizer
- Lawn Installation for all sodded turfgrass areas: Contractor to furnish and prepare blended topsoil (2" minimum) and sod bed, removing all debris and stones 1/2" and larger. Apply a 10-10-10 starter lawn fertilizer uniformly throughout areas prior to laying sod. Use only premium sod blend according to TPI (revised 1995) and ASPA Standards. Install sod uniformly with staggered joints, laid tightly end to end and side to side. Roll sod with a walk behind roller and water immediately upon installation to a 3" depth. Stake any sod installed on slopes steeper than 1:3, and in all swale applications. Contractor is responsible to provide a smooth, uniform, healthy turf, and is responsible for the first two mowings of the newly installed turf, and is also responsible for watering during this period.
- Installation preparation for all seeded areas: remove/kill off any existing unwanted vegetation prior to seeding. Prepare the topsoil (if adequate or provide as in item #8 above) and seed bed by removing all surface stones 1" or larger. Apply a starter fertilizer and specified seed uniformly at the specified rate, and provide mulch covering suitable to germinate and establish turf. Provide seed and fertilizer specifications to Landscape Architect and Owner prior to installation. Erosion control measures are to be used in swales and on slopes in excess of 1:3 and where applicable (see Civil Engineering Drawings). Methods of installation may vary at the discretion of the Landscape Contractor on his/her responsibility to establish and guarantee a smooth, uniform, quality turf. A minimum of 2" of blended, prepared and non-compacted topsoil is required for all lawn areas. If straw mulch is used as a mulch covering, a tackifier may be necessary to avoid wind dispersal of mulch covering. Marsh hay containing reed canary grass is NOT acceptable as a mulch covering.
 An acceptable quality seed installation is defined as having:
 No bare spots larger than one (1) square foot
 No more than 10% of the total area with bare areas larger than one (1) square foot
 A uniform coverage through all turf areas
- No-Mow seed areas: "No-Mow" fine fescue seed mix with annual rye nurse crop (available at Cedar Creek Seed Farm 888-313-6807, or Prairie Nursery 608-296-3678) or approved equivalent mix from a reputable seed mix provider. Apply at 220 lbs per acre or at rate recommended by supplier. Prepare seed bed and soil as specified in item #13 above.
- Native Prairie Seed Mix / Stormwater Seed Mix: Native seed mixes as listed on the Plant and Material List or other seeding schedules outlined on the landscape plan set. Seed mixes available from Prairie Nursery 608-296-3678 or JF New 608-848-1789 or approved equivalent mix from a reputable seed mix provider. Apply at rates specified herein, or per supplier recommendation. Prepare soil and seed bed as in item #13 above.
- Warranty and Replacements: All plantings are to be watered thoroughly at the time of planting, through construction and upon completion of project as required. Trees, Evergreens, and Shrubs (deciduous and evergreen) shall be guaranteed (100% replacement) for a minimum of one (1) year from the date of project completion. Perennials, groundcovers, and ornamental grasses shall be guaranteed for a minimum of one (1) growing season. Perennials, groundcovers, and ornamental grasses planted after September 15th shall be guaranteed through May 31st of the following year. Only one replacement per plant will be required during the warranty period, except for losses or replacements due to failure to comply with specified requirements. Watering and general ongoing maintenance instructions are to be supplied by the Landscape Contractor to the Owner upon completion of the project.
- The Landscape Contractor is responsible for the watering and maintenance of all landscape areas for a period of 45 days after the substantial completion of the landscape installation. This shall include all trees, shrubs, evergreens, perennials, ornamental grasses, turf grass, no-mow grass, and native prairie seed mix / stormwater seed mix. Work also includes weeding, edging, mulching (only if required), fertilizing, trimming, sweeping up grass clippings, pruning and deadheading.
- Project Completion: Landscape Contractor is responsible to conduct a final review of the project, upon completion, with the Landscape Architect, Client or Owner / Client Representative, and the General Contractor to answer questions, provide written care instructions for new plantings and turf, and insure that all specifications have been met.

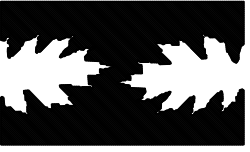
LANDSCAPE GENERAL NOTES



ENLARGED LANDSCAPE PLAN

Scale: 1" = 40'0"

HELLER & ASSOCIATES, LLC
 LANDSCAPE ARCHITECTURE



P.O. Box 1359
 Lake Geneva, Wisconsin 53147-1359
 ph 262.639.9733
 david@wdavidheller.com
 www.wdavidheller.com

PROJECT

THE GLEN AT STANDING STONE

Tenny Avenue
 Waukesha, WI

ISSUANCE AND REVISIONS

DATE	DESCRIPTION
6.18.20	ISSUE TO OWNER
9.22.20	REVISED CIVIL
10.08.20	REV. PLANTING PLAN
10.15.20	REV. PLANTING PLAN
11.13.20	REVISED CIVIL

Information contained herein is based on survey information, field inspection, and believed to be accurate.

SHEET TITLE

ENLARGED LANDSCAPE PLAN: STAND ALONE UNITS

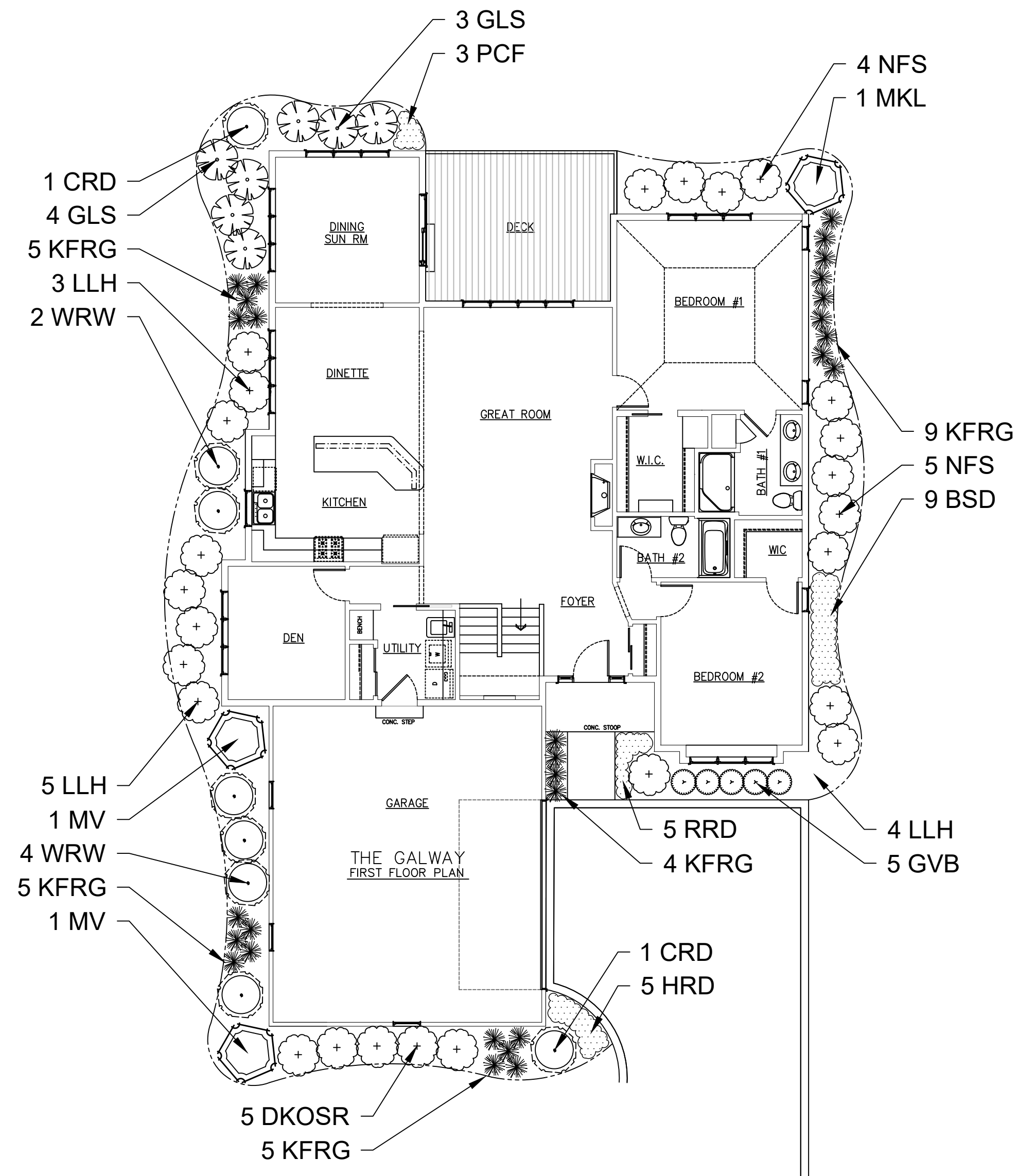
PROJECT MANAGER **WDH**

PROJECT NUMBER **20-041**

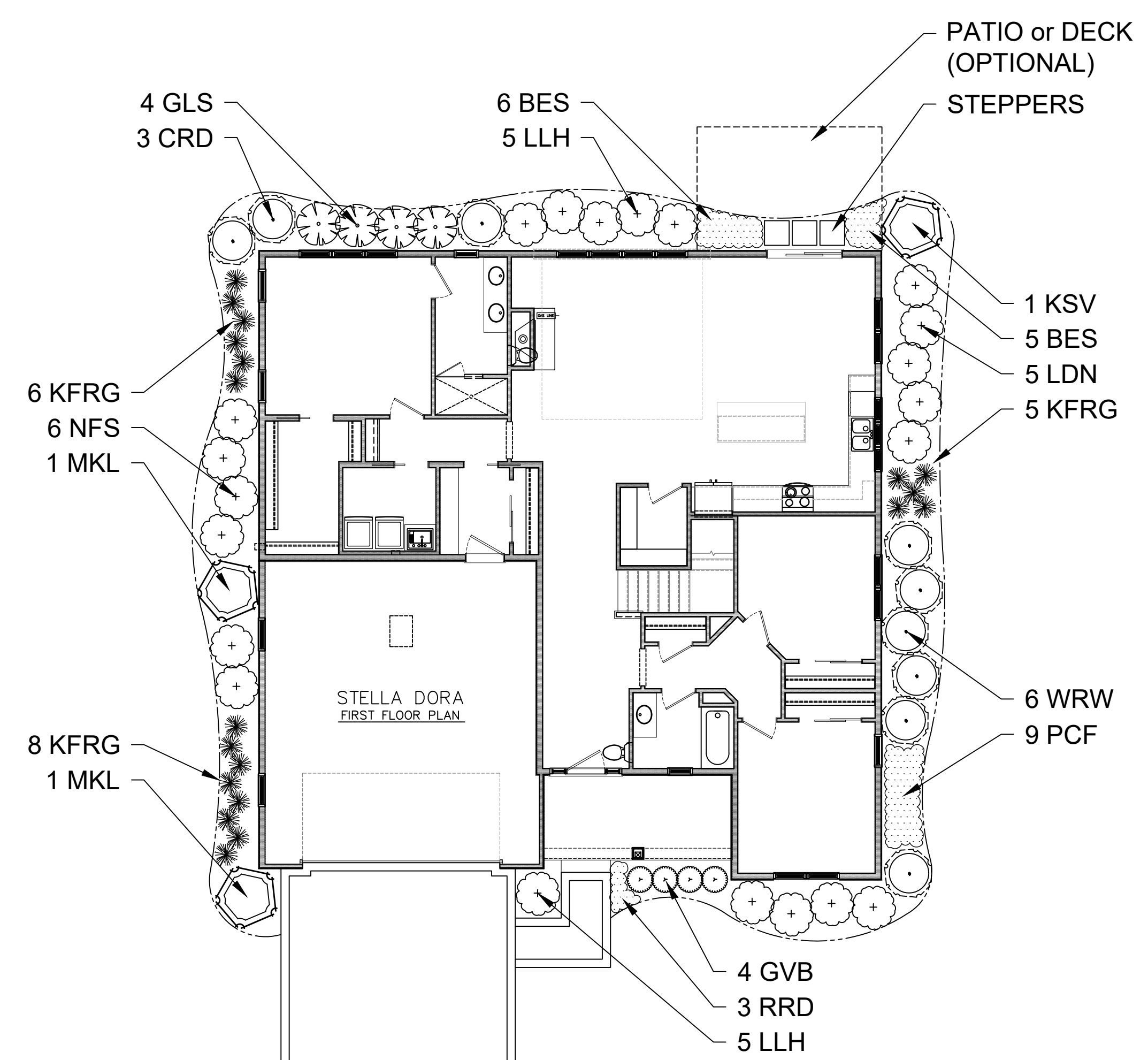
DATE **11.13.20**

SHEET NUMBER

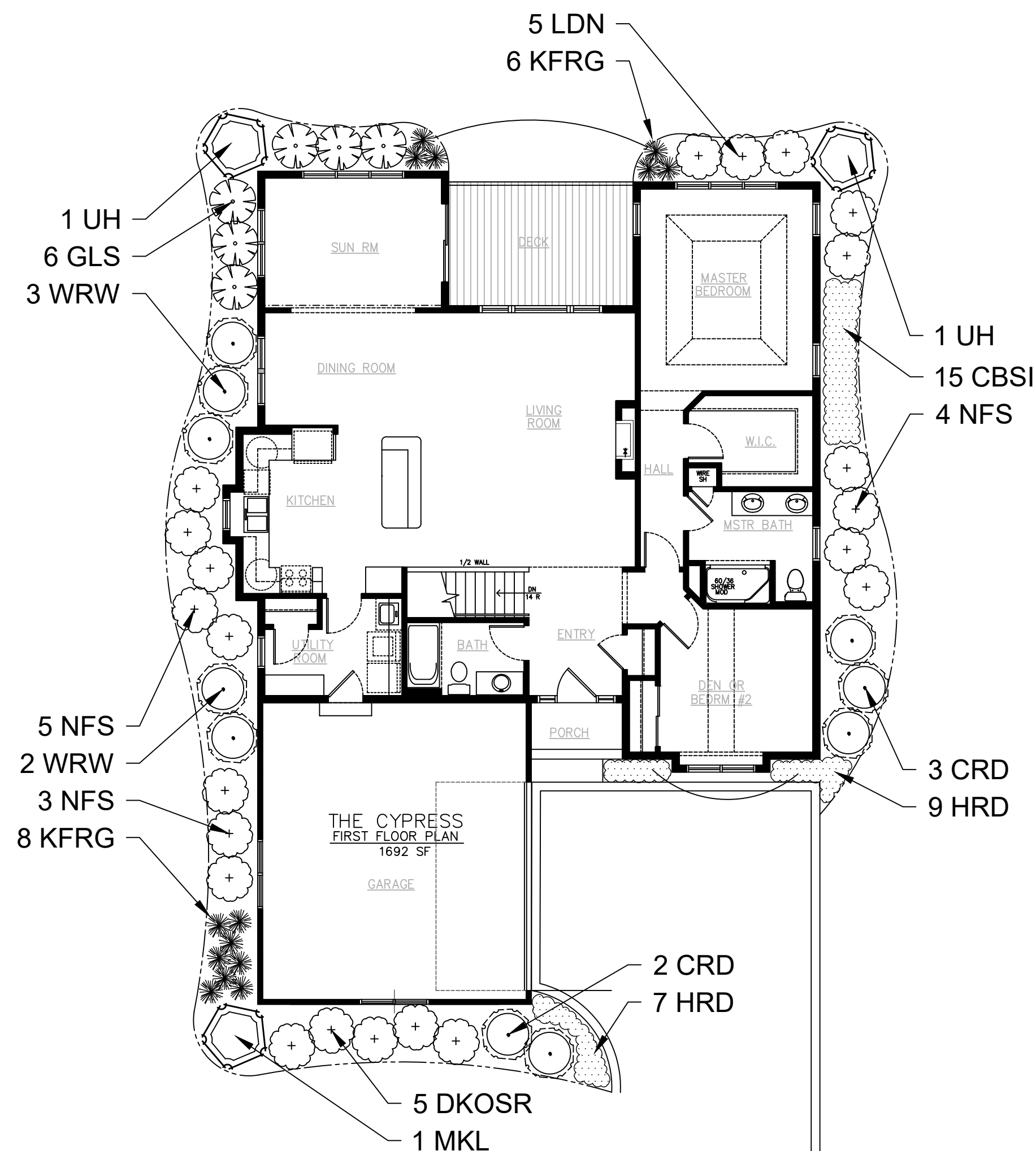
L 1.11



GALWAY FOUNDATION LANDSCAPE PLAN
Scale: 1" = 10'0"



STELLA DORA FOUNDATION LANDSCAPE PLAN
Scale: 1" = 10'0"



CYPRESS FOUNDATION LANDSCAPE PLAN
Scale: 1" = 10'0"

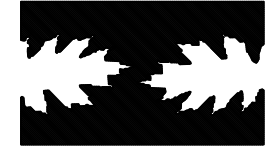
PLANT QUANTITY (PER UNIT)	PLANT KEY	PLANT MATERIAL PROPOSED	COMMON NAME	CALIPER or HEIGHT	ROOT	SPECIFICATION / NOTES	PLANT SPACING	
Proposed Landscape Materials								
EVERGREEN SHRUBS								
5	4	GVB	Buxus 'Green Velvet'	Green Velvet Boxwood	24"	Cont. Full rounded well branched shrub	24-30"	
DECIDUOUS SHRUBS								
3	3	5	CRD	Cornus sericea 'Cardinal'	Cardinal Redtwig Dogwood	42"	Cont. Full, well rooted plant, evenly shaped	48"
12	10	2	LLH	Hydrangea paniculata 'Jane'	Little Lime Hydrangea	24"	Cont. Full, well rooted plant, evenly shaped	42"
5	5	2	LDN	Physocarpus opulifolius 'Little Devil'	Little Devil Ninebark	30"	Cont. Full, well rooted plant, evenly shaped	60"
7	4	6	GLS	Rhus aromatica 'Gro-Low'	Gro Low Fragrant Sumac	18-24"	Cont. Full, well rooted plant, evenly shaped	42"
5	5	5	DKOSR	Rosa 'Double Knock Out' (Pink)	Double Pink Knock Out Rose	18"	Cont. Full, well rooted plant, evenly shaped	48"
9	6	12	NFS	Spiraea xbumalda 'Neon Flash'	Neon Flash Spiraea	24"	Cont. Full, well rooted plant, evenly shaped	60"
1	2	1	MKL	Syringa patula 'Miss Kim'	Miss Kim Dwarf Lilac	36"	Cont. Full, well rooted plant, evenly shaped	60"
2	1	1	KSV	Viburnum carlesii	Fragrant Koreanopice Viburnum	36"	Cont. Full, well rooted plant, evenly shaped	60"
2	1	1	MV	Viburnum lantana 'Mohican'	Mohican Viburnum	48"	B&B Full, well rounded plant with moist rootball and healthy appearance	60"
6	6	5	WRW	Weigela florida 'Wine & Roses'	Wine & Roses Compact Weigela	24"	Cont. Full, well rooted plant, evenly shaped	42"
ORNAMENTAL GRASSES								
28	19	14	KFRG	Calamagrostis acutiflora 'Karl Foerster'	Karl Foerster Feather Reed Grass	#1	Cont. Full, well rooted plant	15-18"
HERBACEOUS PERENNIALS								
3	9	9	PCF	Echinacea purpurea 'Magnus'	Magnus Purple Coneflower	#1	Cont. Full, well rooted plant, evenly shaped	18"
5	16	16	HRD	Hemerocallis 'Happy Returns'	Happy Returns Daylily	#1	Cont. Full, well rooted plant, evenly shaped	18"
5	3	15	RBD	Hemerocallis 'Rosy Returns'	Rosy Returns Daylily	#1	Cont. Full, well rooted plant, evenly shaped	18"
9	11	15	CBSI	Iris sibirica 'Caesars' Brother'	Caesars' Brother Siberian Iris	#1	Cont. Full, well rooted plant, evenly shaped	18"
			BSD	Leucanthemum xsuperbum 'Becky'	Becky Shasta Daisy	#1	Cont. Full, well rooted plant, evenly shaped	18"
			BES	Rudbeckia fulgida 'Goldsturm'	Black-eyed Susan	#1	Cont. Full, well rooted plant, evenly shaped	18"
Hardscape Materials								
11				Shredded Hardwood Mulch (3" depth)	Landscape Bed Area: 1,200 SF	CY	Bark Mulch; apply Preemergent after installation of mulch	
7				Soil Amendments (2" depth)	Landscape Bed Area: 1,200 SF	CY		
30				Pulverized Topsoil (Lawn Area)	Light Grading and Seeding Area: 9,500 SF	CY		
7				Pulverized Topsoil (2" over bed areas)	Landscape Bed Area: 1,200 SF	CY		

*Landscape counts & quantities are provided as a service to the Landscape Contractor. Landscape Contractor is responsible for verifying these counts and quantities in order to provide a complete landscape installation as outlined on this Landscape Master Plan. In the event that a discrepancy occurs between this schedule and the Landscape Master Plan, the Landscape Master Plan, including the graphics and notations depicted therein, shall govern.

Seed Compositions:
Reinder's Deluxe 50 Seed Mix (800-785-3301):
20% Kentucky Bluegrass (Seed Quality) 15% Quebec Perennial Ryegrass
15% Newport Kentucky Bluegrass 10% Fiesta III Perennial Ryegrass
15% Ken Blue Kentucky Bluegrass
25% Creeping Red Fescue
Seed at rate of 150-200# per acre

PLANT & MATERIAL SCHEDULE

HELLER & ASSOCIATES, LLC
LANDSCAPE ARCHITECTURE
P.O. Box 1359
Lake Geneva, Wisconsin 53147-1359
ph 262.639.9733
david@wdavidheller.com
www.wdavidheller.com



PROJECT
THE GLEN AT STANDING STONE

Tenny Avenue
Waukesha, WI

ISSUANCE AND REVISIONS

DATE	DESCRIPTION
6.18.20	ISSUE TO OWNER
9.22.20	REVISED CIVIL
10.08.20	REV. PLANTING PLAN
10.15.20	REV. PLANTING PLAN
11.13.20	REVISED CIVIL

SHEET TITLE
ENLARGED LANDSCAPE PLAN: STAND ALONE UNIT FOUNDATIONS

PROJECT MANAGER **WDH**
PROJECT NUMBER **20-041**
DATE **11.13.20**
SHEET NUMBER