

ST PAUL APARTMENTS

DESIGN UPDATE

04.22.20

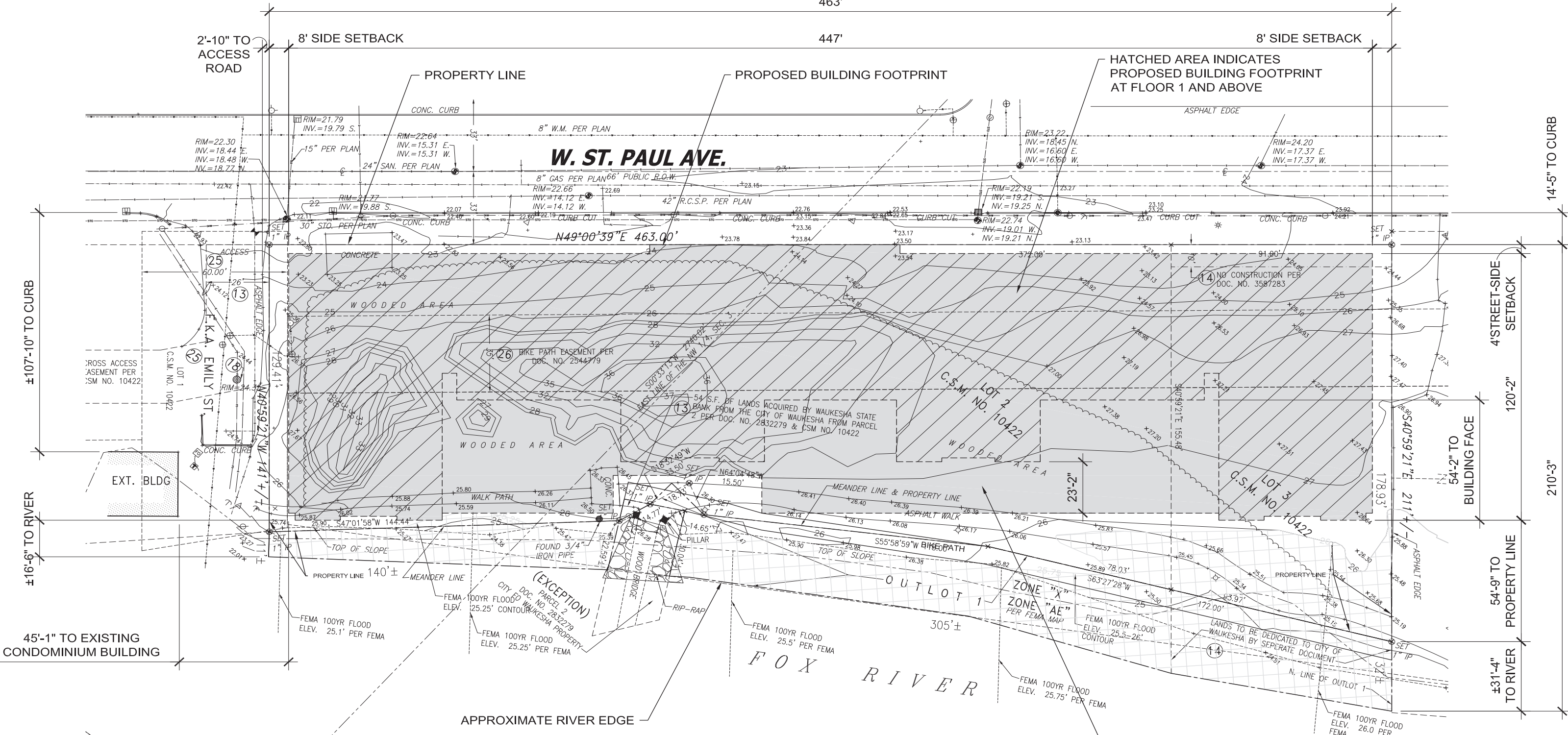
 **MANDEL** GROUP

STRIEGEL
AGACKI
STUDIO

/ TABLE OF CONTENTS

- 1/ SITE SURVEY WITH PROPOSED BUILDING
- 2/ FLOOR PLANS
- 3/ EXTERIOR ELEVATIONS
- 4/ SITE SECTION
- 5/ VIEW LOOKING ALONG ST PAUL AVENUE
- 6/ CORNER VIEW LOOKING ALONG ST PAUL AVENUE

1/ SITE SURVEY



PROPOSED BUILDING FOOTPRINT ON SURVEY
 ST PAUL APARTMENTS: PRELIMINARY SITE PLANNING



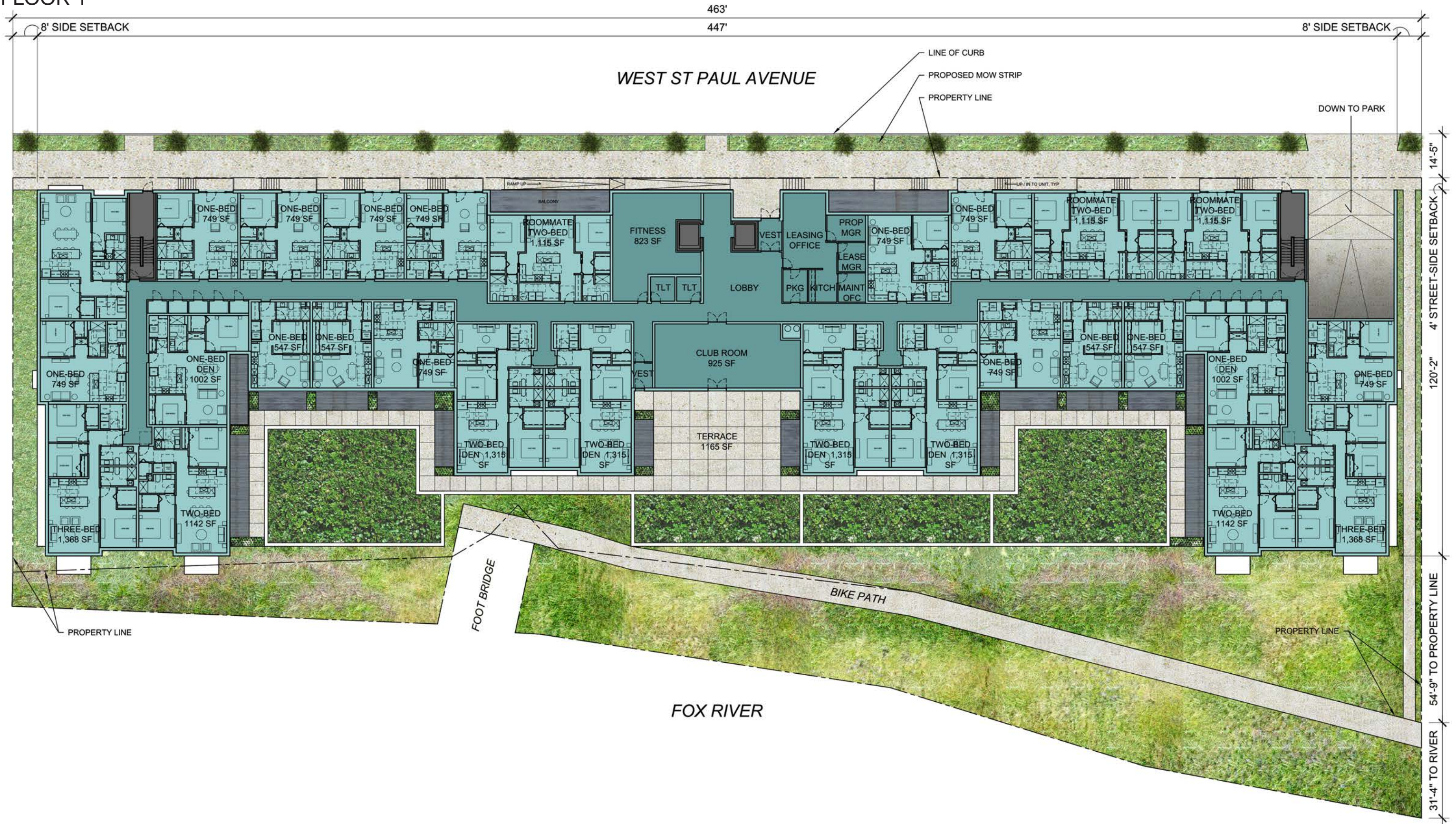
STRIEGEL AGACKI STUDIO

DESIGN UPDATE

04.22.20

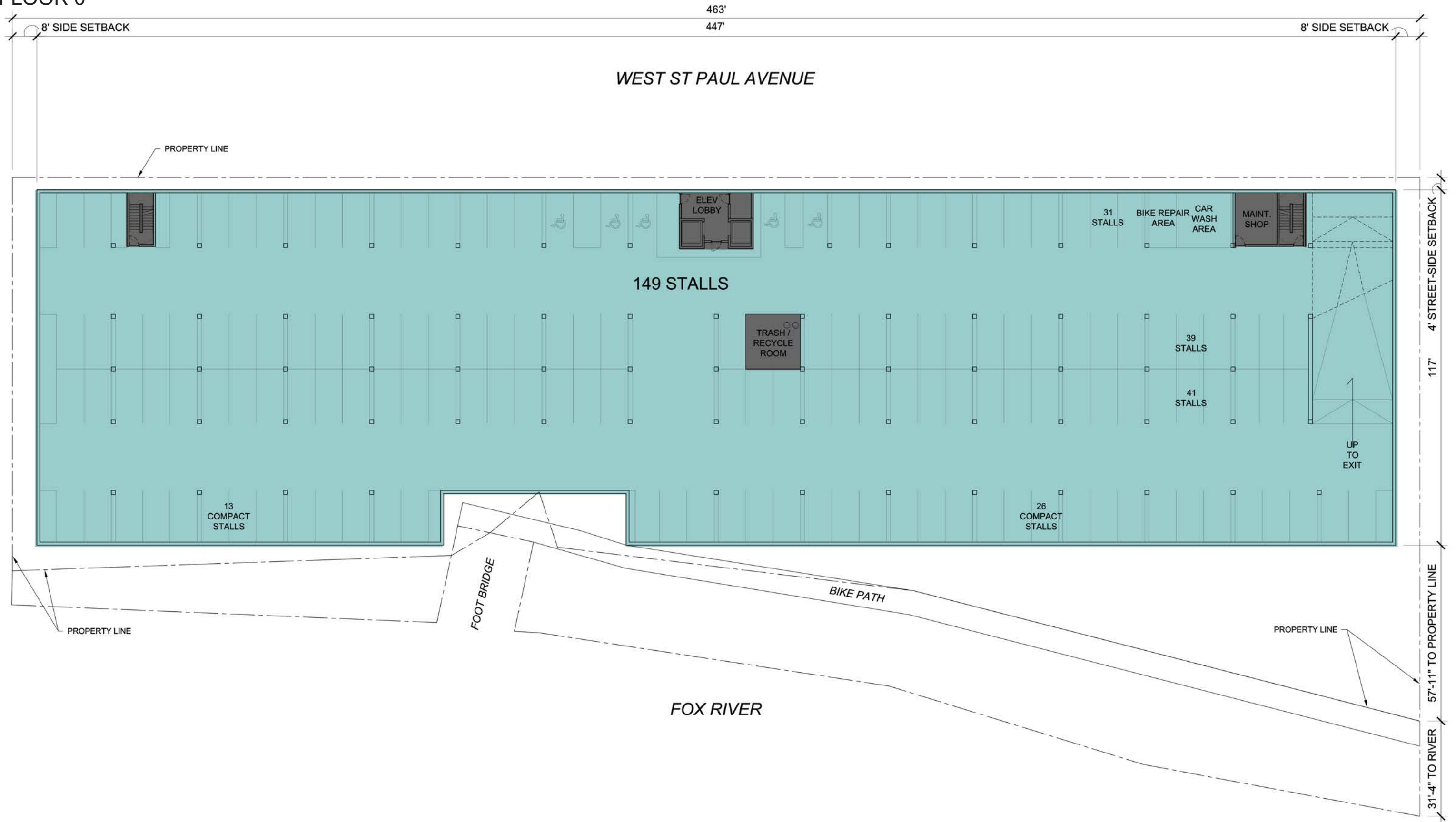
2/ FLOOR PLANS

FLOOR 1



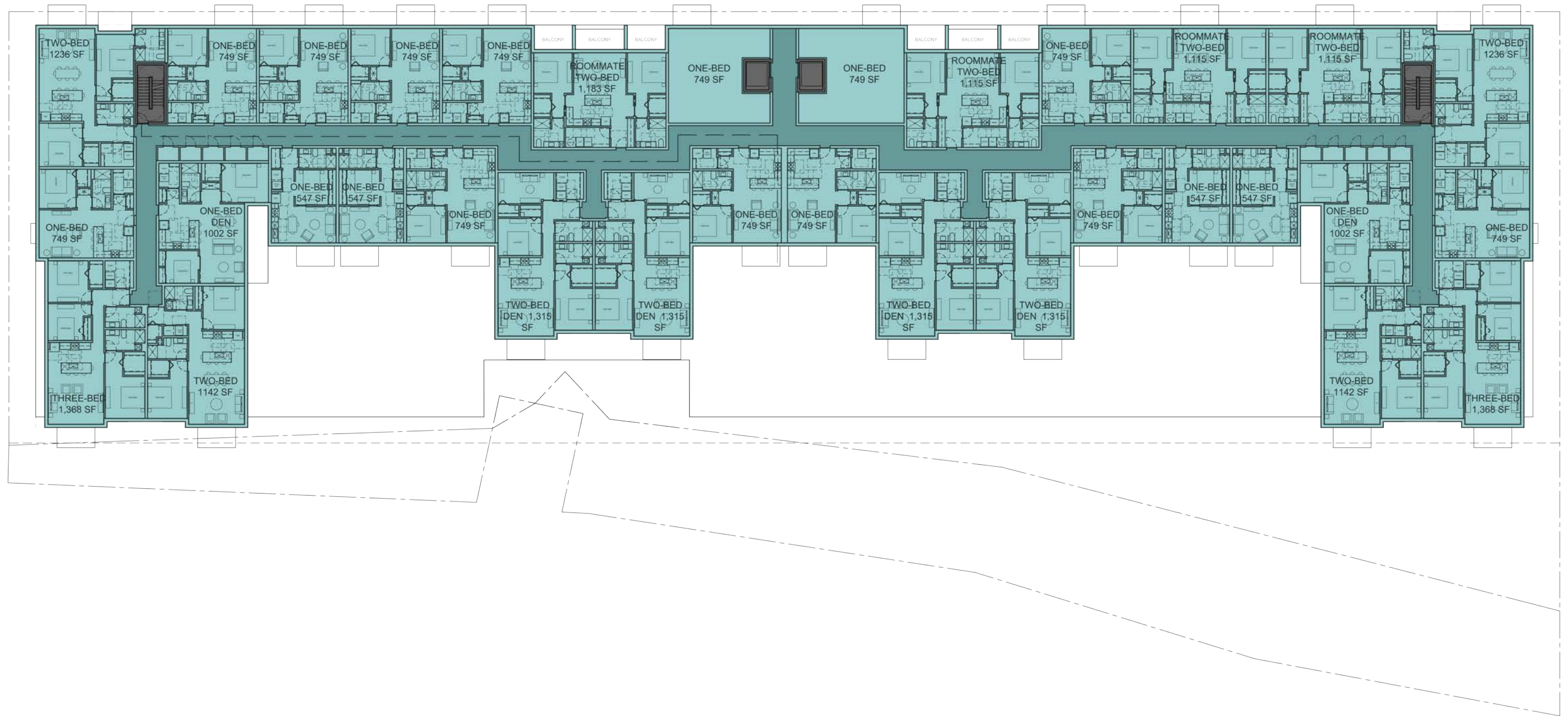
ST PAUL APARTMENTS: PRELIMINARY SITE PLANNING

FLOOR 0

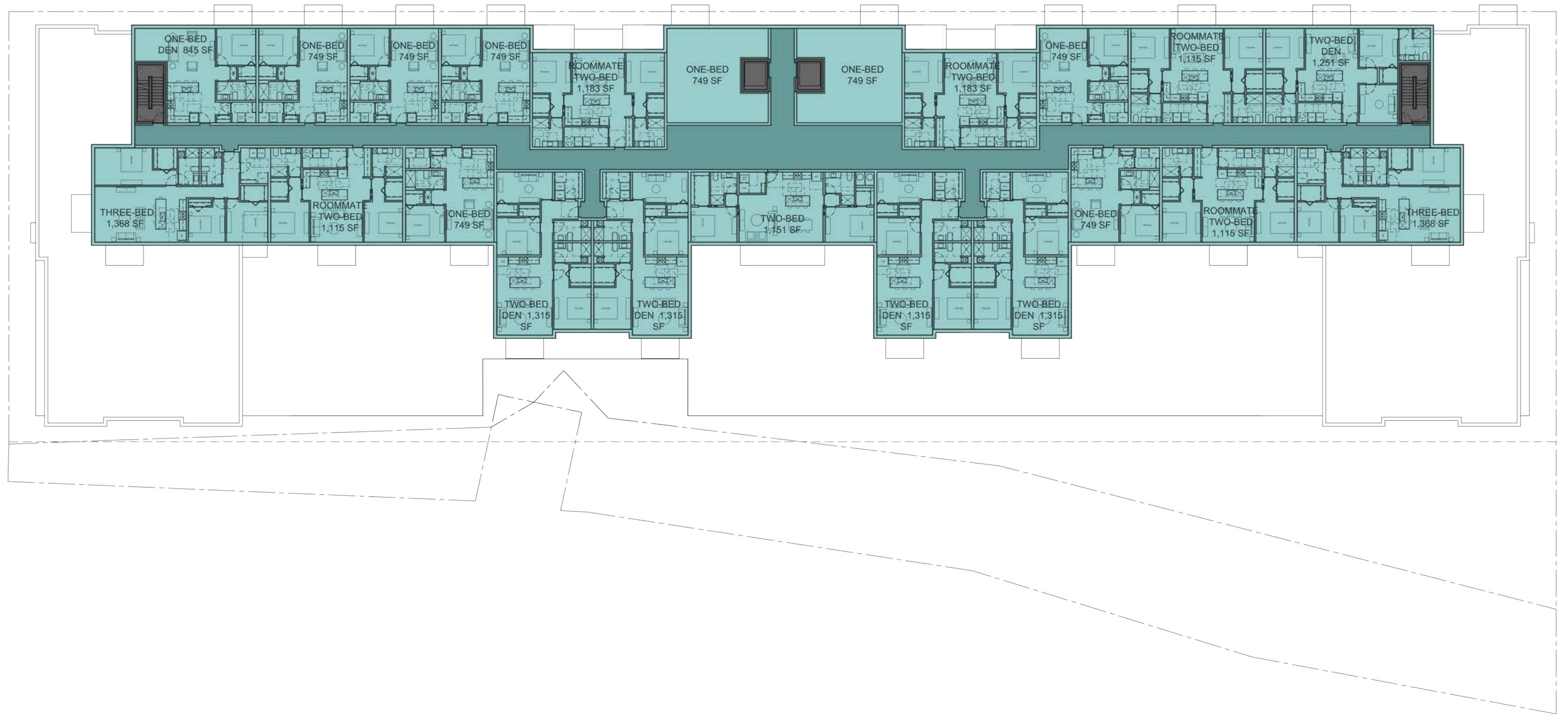


ST PAUL APARTMENTS: PRELIMINARY SITE PLANNING

FLOORS 2-4



FLOOR 5



3/ EXTERIOR ELEVATIONS

NORTH ELEVATION



MATERIAL IMAGERY



IRON SPOT BRICK VENEER



NICHIHA BRICK PANEL RAIN-SCREEN

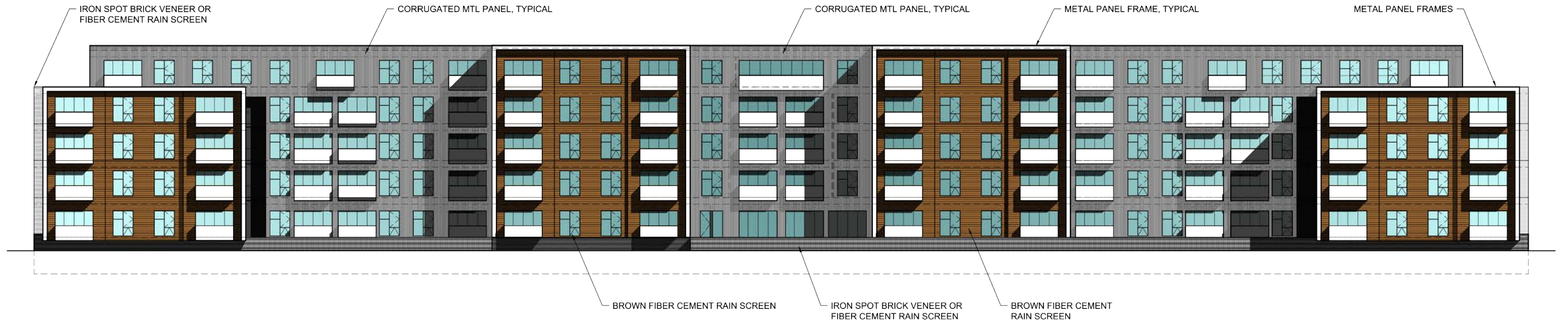


BROWN FIBER CEMENT RAIN-SCREEN

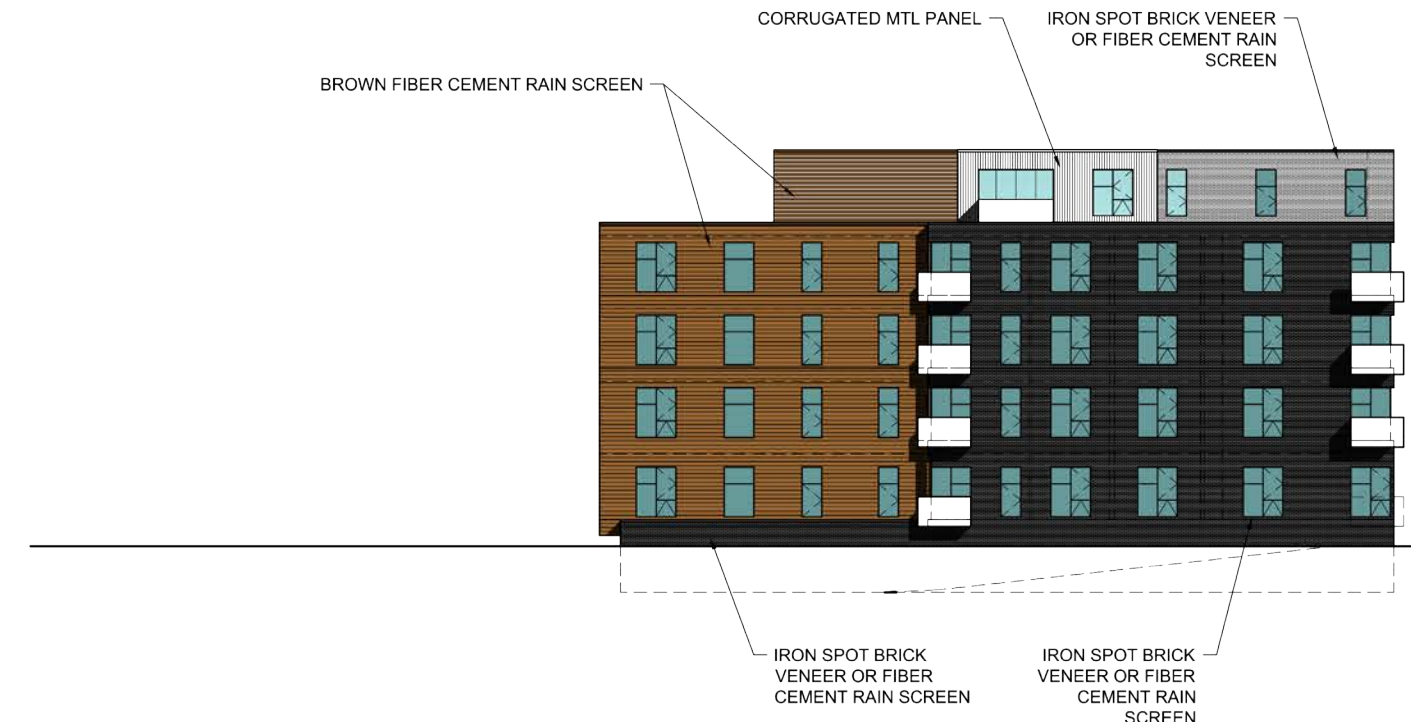


METAL PANEL FRAMES

SOUTH ELEVATION



EAST-WEST ELEVATION



MATERIAL IMAGERY

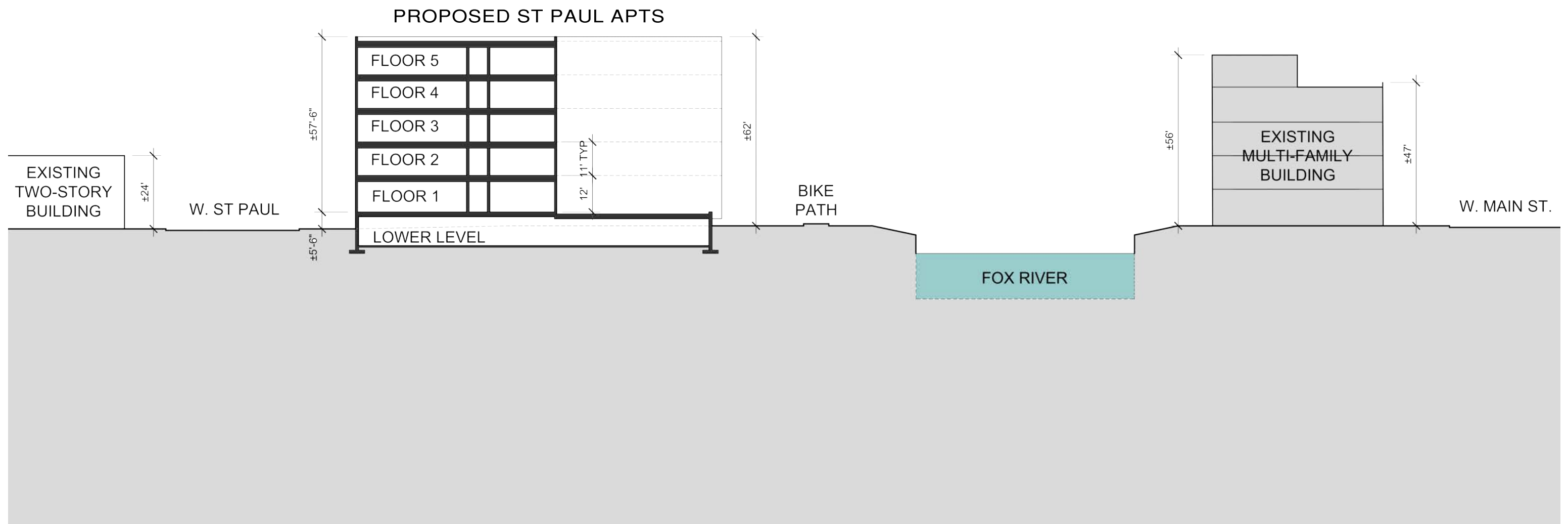


CORRUGATED METAL PANEL



BROWN FIBER CEMENT RAIN-SCREEN

4/ SITE SECTION



ST PAUL APARTMENTS: PRELIMINARY SITE PLANNING

5/ VIEW LOOKING ALONG ST PAUL AVENUE



ST PAUL APARTMENTS: PRELIMINARY SITE PLANNING

 **MANDEL GROUP**

STRIEGEL AGACKI STUDIO

DESIGN UPDATE

04.22.20

6/ CORNER VIEW LOOKING ALONG ST PAUL AVENUE



ST PAUL APARTMENTS: PRELIMINARY SITE PLANNING

 **MANDEL GROUP**

STRIEGEL AGACKI STUDIO

DESIGN UPDATE

04.22.20