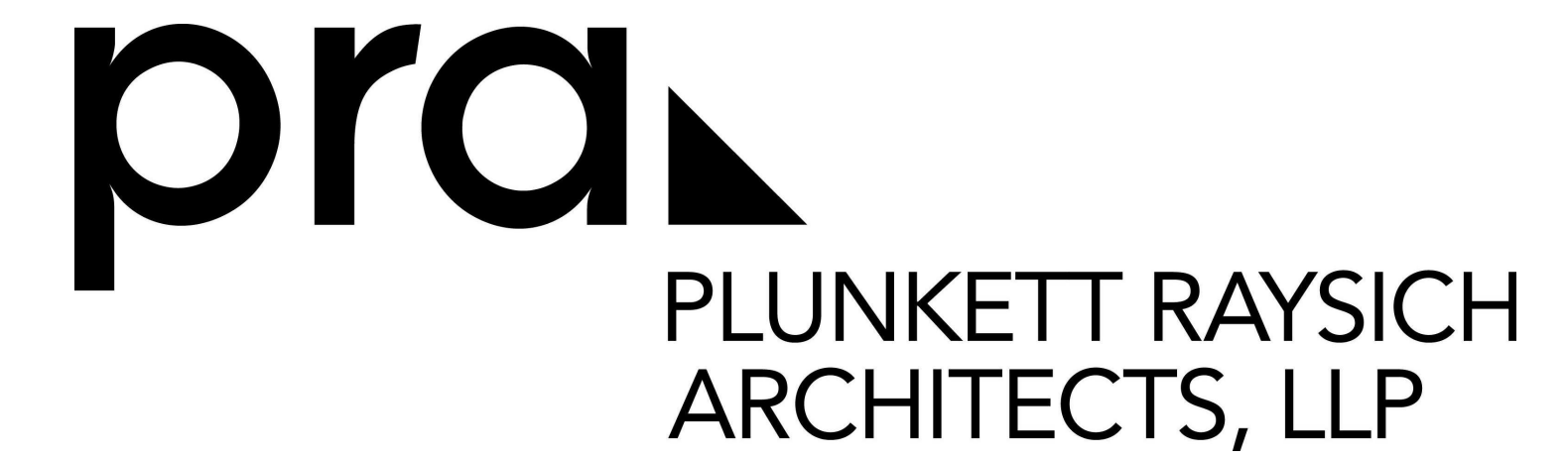


Waukesha Residences, LLC by T. Wall Enterprises, LLC Fox Head Residences - Common Council Set

Maple Avenue, Waukesha, Wisconsin



11000 west park place milwaukee, wisconsin 53224 t 414 359 3060
2310 crossroads drive suite 2000 madison, wisconsin 53718 t 608 240 9900
1613 fruitville road suite 3 sarasota, florida 34236 t 941 348 3618

intelligent designs. inspired results. | www.prarch.com

Sheet Index

Architectural

- A000 - Title Sheet
- A001 - Exterior Perspective
- A002 - Existing Aerial Site Plan
- A003 - Proposed Aerial Site Plan
- A200 - Lower Parking Plan
- A201 - Site Plan / First Floor Plan
- A202 - Second Floor Plans
- A203 - Third Floor Plans
- A204 - Fourth Floor Plan
- A205 - Mezzanine Floor Plan
- A210 - Roof Plan
- A232 - Unit Layouts
- A233 - Unit Layouts
- A400 Exterior Elevations
- A401 Exterior Elevations

Landscape

- L1 - Landscape Plan

Site Civil

- S554 - Draft ALTA/ACSM Land Title Survey 1 of 2
- S554 - Draft ALTA/ACSM Land Title Survey 2 of 2
- C100 - Existing Conditions
- C200 - Demolition Plan
- C300 - Site Plan
- C400 - Grading and Erosion Control Plan
- C500 - Utility Plan
- C600 - Plan and Profile - Watermain Easement
- C601 - Plan and Profile - Watermain Easement

Site Lighting

- E1 - Site Lighting Layout Plan

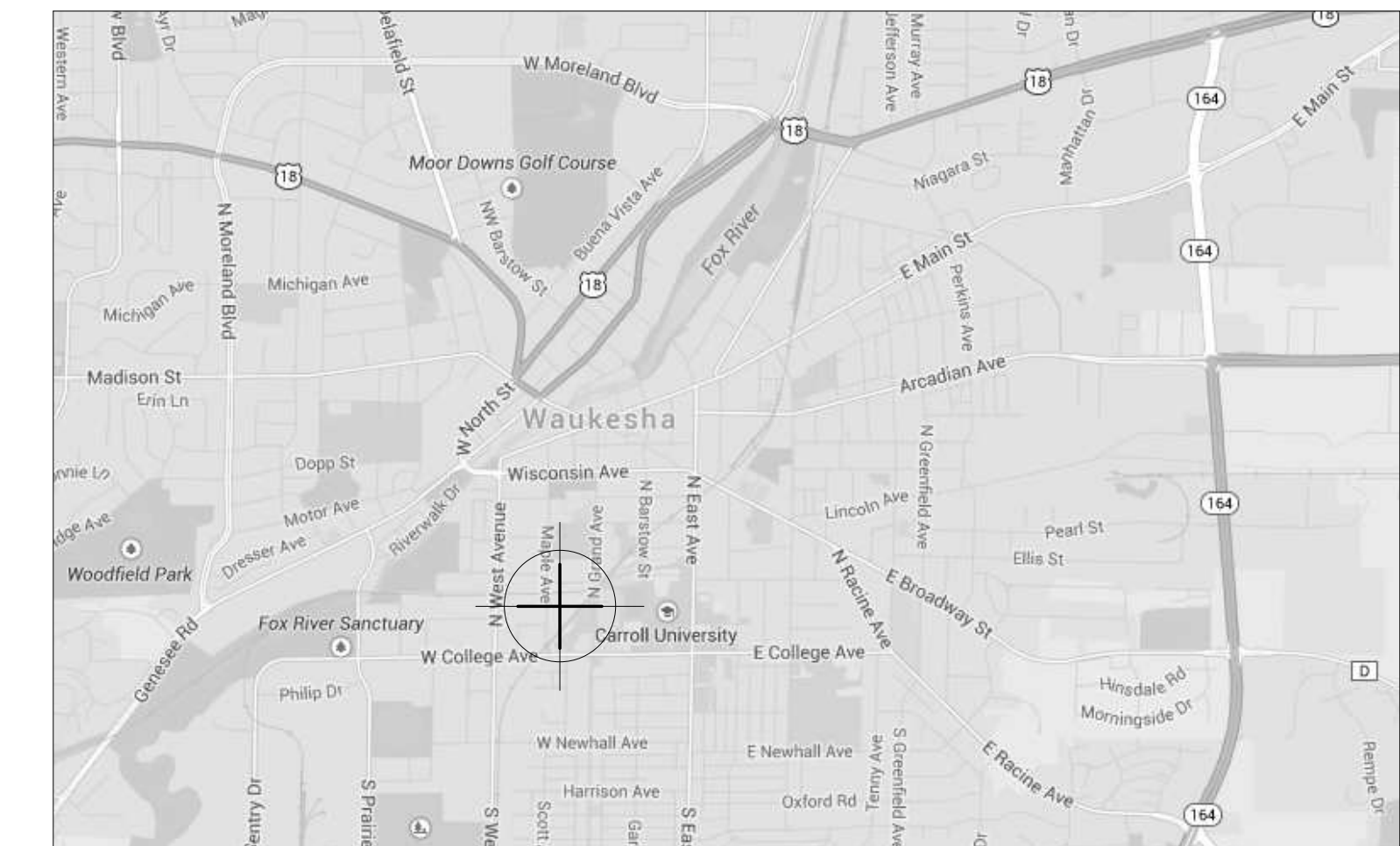
Additional Information

- R.A Smith National - Memo

Project Information

Project Date: 2/3/14
PRA Project Number: 140243-02

Project Location



Project Team



Owner
Waukesha Residences, LLC
T Wall Enterprises, LLC

Tel 608 575-1018

Architectural
Plunkett Raysich Architects, LLP

Tel 414 359-3060
Fax 414 359-3070



RELOCATED FOX HEAD BREWERY PLAQUE

NOT FOR CONSTRUCTION
© Plunkett Raysich Architects, LLP

Drawn By:
MT, NU, MR
Date:
2/3/14
Job No.:
140243-02
Sheet No.:
A 001

Fox Head Residences - Common Council Set
Maple Avenue, Waukesha, Wisconsin

Revisions

pra

PLUNKETT RAYSICH
ARCHITECTS, LLP

11000 west park place milwaukee, wisconsin 53224 1-414-359-3060
2310 crossroads drive suite 2000 madison, wisconsin 53718 1-608-240-9900
1613 fruitville road suite 3 sarasota, florida 34236 1-941-348-3618
intelligent designs. inspired results. | www.praich.com



1
A 002 EXISTING SITE PLAN
1" = 20'-0"

NOT FOR CONSTRUCTION
© Plunkett Raysich Architects, LLP

Drawn By:
CB,MT
Date:
2/3/14
Job No.:
140243-02
Sheet No.:

Revisions

Fox Head Residences - Common Council Set

Maple Avenue, Waukesha, Wisconsin

pra

PLUNKETT RAYSICH
ARCHITECTS, LLP

11000 west park place milwaukee, wisconsin 53224 t 414 359 3060
2310 crossroads drive suite 2000 madison, wisconsin 53718 t 608 240 9900
1613 fruitville road suite 3 sarasota, florida 34236 t 941 348 3618

intelligent designs. inspired results. | www.praich.com



1 Proposed Aerial Site Plan
 A 003 1/8" = 1'-0"

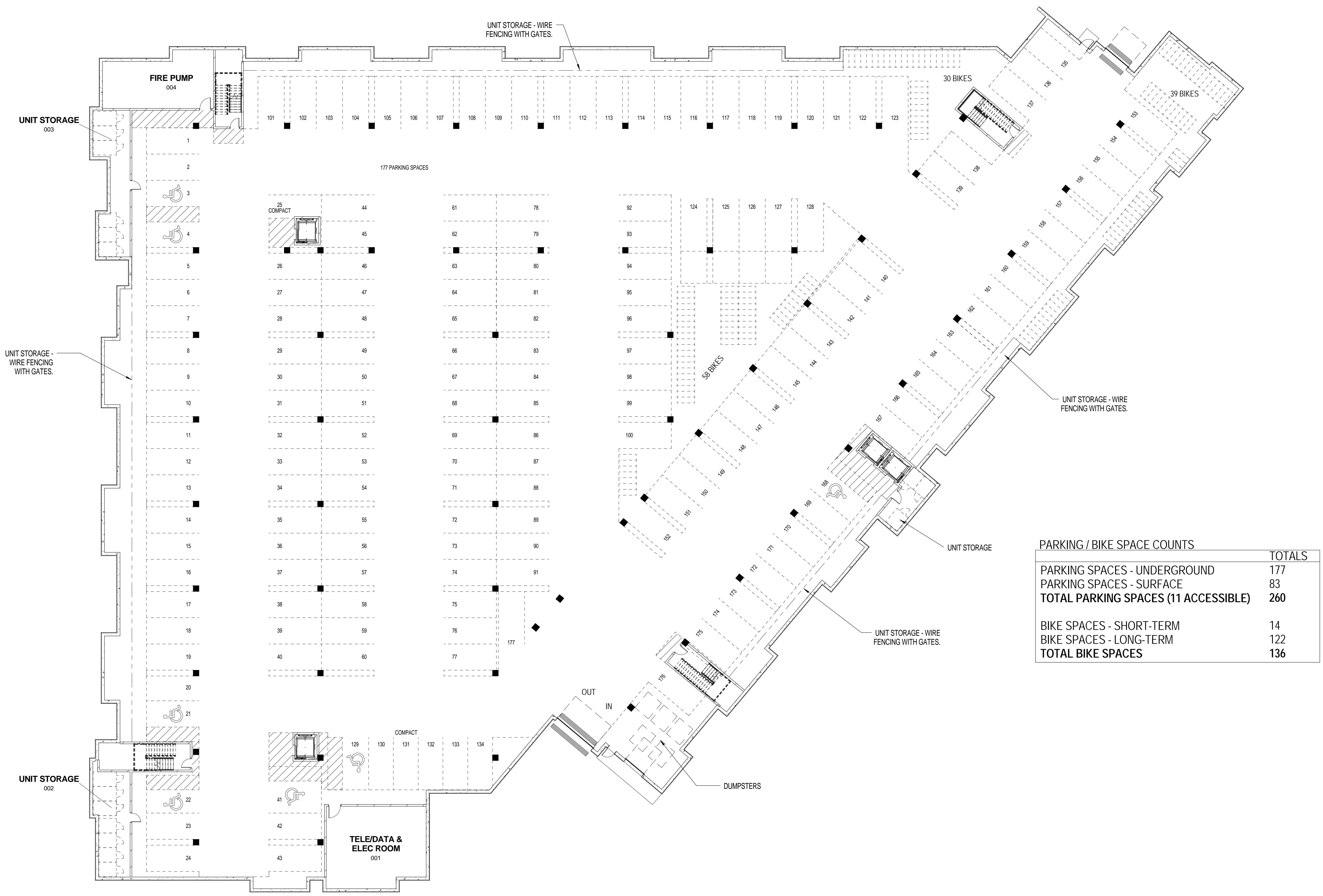
NOT FOR CONSTRUCTION
 © Plunkett Raysich Architects, LLP

Drawn By:
 CB,MT
 Date:
 2/3/14
 Job No.:
 140243-02
 Sheet No.:

A 003

Fox Head Residences - Common Council Set
 Maple Avenue, Waukesha, Wisconsin

Revisions



PARKING / BIKE SPACE COUNTS	
	TOTALS
PARKING SPACES - UNDERGROUND	177
PARKING SPACES - SURFACE	83
TOTAL PARKING SPACES (11 ACCESSIBLE)	260
BIKE SPACES - SHORT-TERM	14
BIKE SPACES - LONG-TERM	122
TOTAL BIKE SPACES	136

1 LOWER LEVEL PLAN - 1/16 - SD
A 200 1/16" = 1'-0"

NOT FOR CONSTRUCTION
© Plunkett Raysich Architects, LLP

Drawn By: Author
Date: 2/3/14
Job No.: 140243-02
Sheet No.:

A 200

Fox Head Residences - Common Council Set
Maple Avenue, Waukesha, Wisconsin

pra
PLUNKETT RAYSICH
ARCHITECTS, LLP

11000 west park place milwaukee, wisconsin 53224 t 414 359 3040
2310 crossroads drive suite 2000 madison, wisconsin 53718 t 608 240 9900
1613 fruitville road suite 3 sarasota, florida 34236 t 941 348 3618
intelligent designs. inspired results. | www.praich.com

2/5/2015 1:51:30 PM C:\PRA\BAC\Local Project Files\140243-02-A-central\14_micromed.nct

MAPLE AVENUE

C&NW RAILROAD



AREA	PARKING	COMMERCIAL	APARTMENTS	TOTALS
LOWER LEVEL	77,359 sf	-	-	77,359 sf
FIRST FLOOR	-	13,105 sf	45,922 sf	59,026 sf
SECOND FLOOR	-	-	-	58,055 sf
THIRD FLOOR	-	-	-	58,055 sf
FOURTH FLOOR	-	-	-	39,538 sf
MEZZANINE/LOFT	-	-	-	1,600 sf
WEST WING				56,865 sf
NORTH WING				71,366 sf
EAST WING				86,027 sf
CONNECTORS				2,016 sf

BUILDING 293,633 sf

UNIT COUNT	FLOORS	STUDIO	1 BDRM	1 BDRM ADA	2 BDRM	2 BDRM LOFT	# OF UNITS
WEST WING	3	21	17	5	2	2	47
NORTH WING	4	21	32	0	13	2	68
EAST WING	4	39	28	0	16	4	87
TOTALS		81	82	5	31	8	202

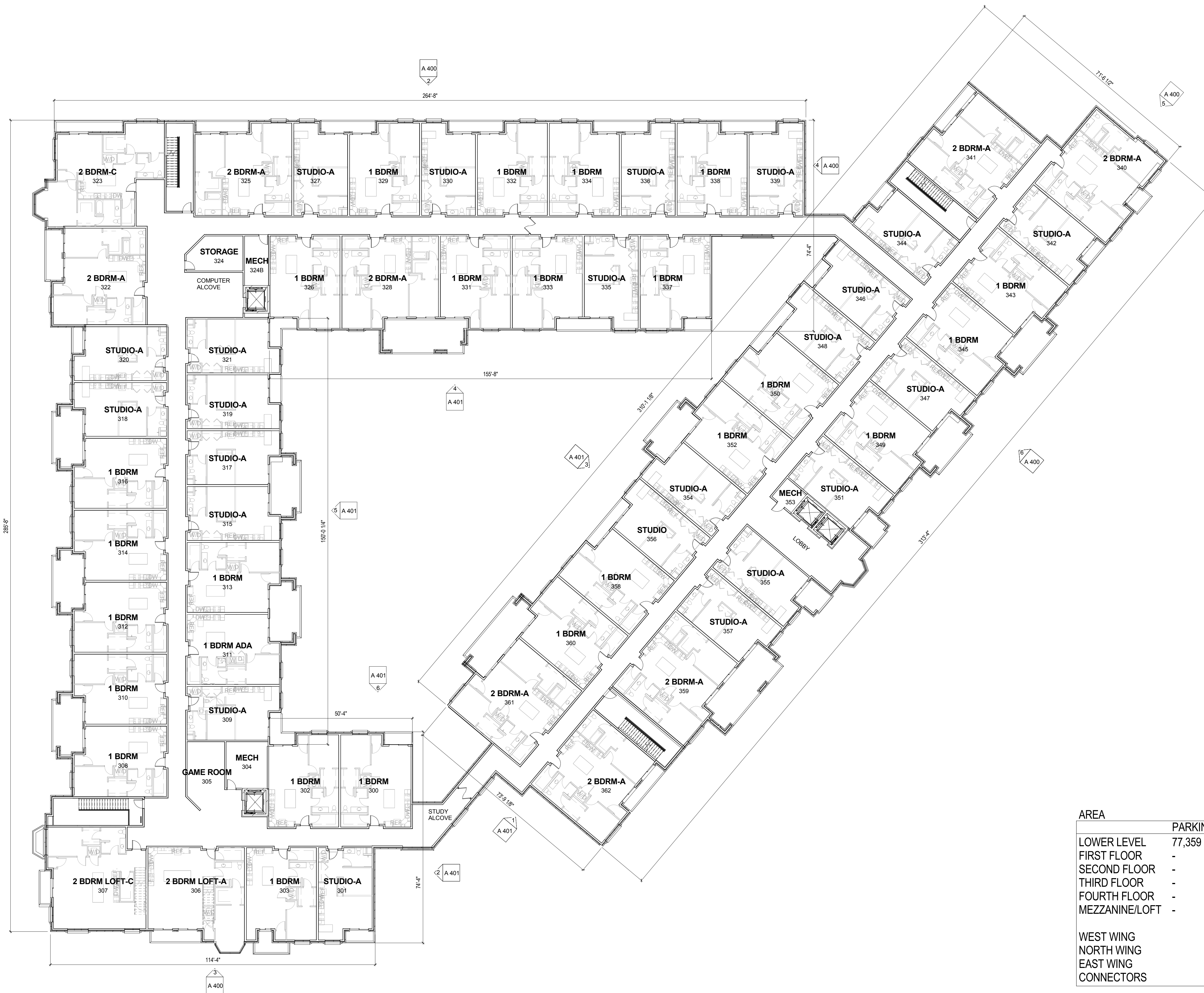
1 SITE PLAN / FIRST FLOOR PLAN
A 201 / 1/16" = 1'-0"



1 SECOND FLOOR PLAN
A 202 1/16" = 1'-0"

AREA	PARKING	COMMERCIAL	APARTMENTS	TOTALS
LOWER LEVEL	77,359 sf	-	-	77,359 sf
FIRST FLOOR	-	13,105 sf	45,922 sf	59,026 sf
SECOND FLOOR	-	-	-	58,055 sf
THIRD FLOOR	-	-	-	58,055 sf
FOURTH FLOOR	-	-	-	39,538 sf
MEZZANINE/LOFT	-	-	-	1,600 sf
WEST WING				56,865 sf
NORTH WING				71,366 sf
EAST WING				86,027 sf
CONNECTORS				2,016 sf
BUILDING				293,633 sf

UNIT COUNT	FLOORS							# OF UNITS
	STUDIO	1 BDRM	1 BDRM ADA	2 BDRM	2 BDRM	LOFT		
WEST WING	3	21	17	5	2	2	47	
NORTH WING	4	21	32	0	13	2	68	
EAST WING	4	39	28	0	16	4	87	
TOTALS	81	82	5	31	8		202	



1 THIRD FLOOR PLAN
A 203 1/16" = 1'-0"

AREA	PARKING	COMMERCIAL	APARTMENTS	TOTALS
LOWER LEVEL	77,359 sf	-	-	77,359 sf
FIRST FLOOR	-	13,105 sf	45,922 sf	59,026 sf
SECOND FLOOR	-	-	-	58,055 sf
THIRD FLOOR	-	-	-	58,055 sf
FOURTH FLOOR	-	-	-	39,538 sf
MEZZANINE/LOFT	-	-	-	1,600 sf
WEST WING				56,865 sf
NORTH WING				71,366 sf
EAST WING				86,027 sf
CONNECTORS				2,016 sf

BUILDING 293,633 sf

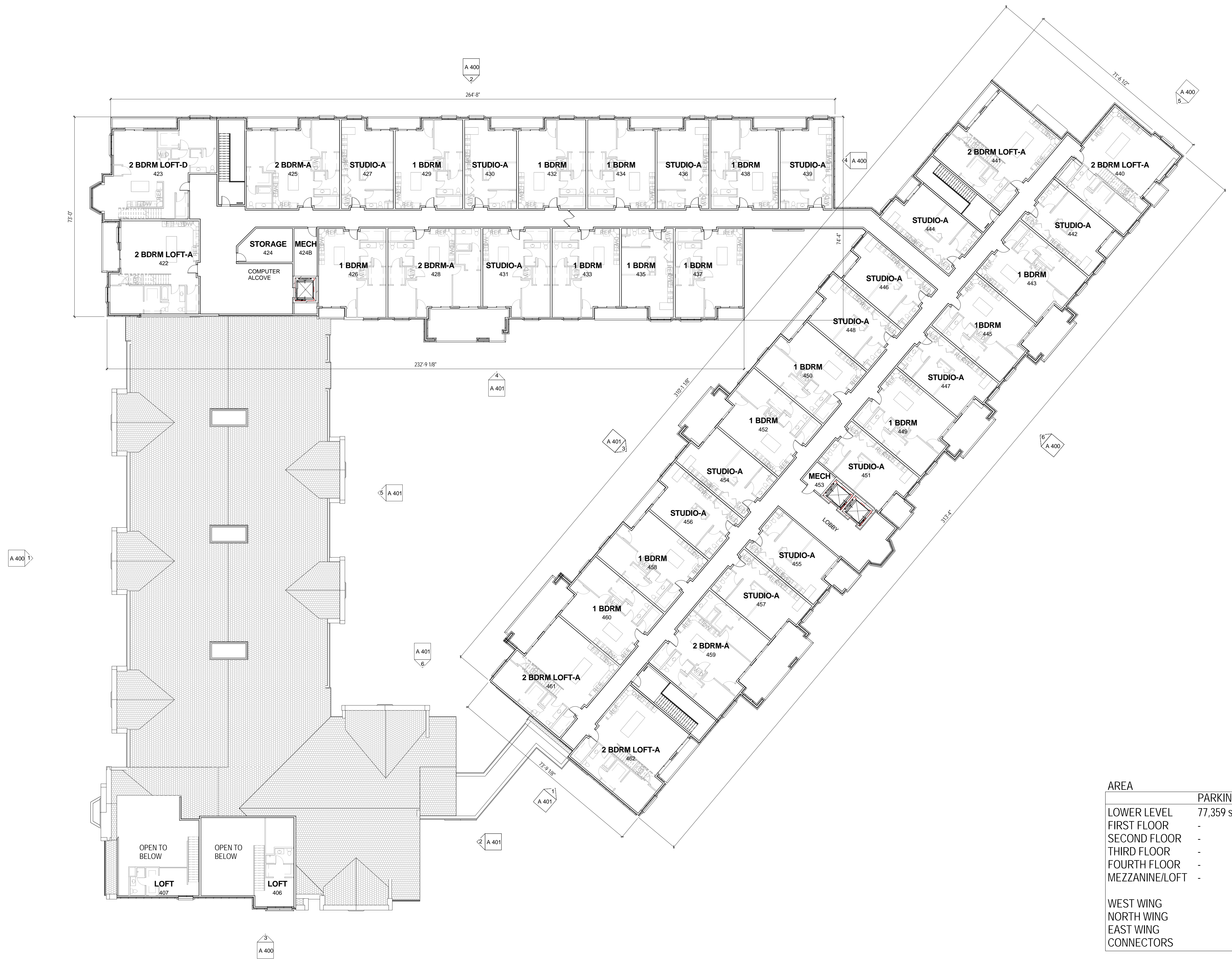
UNIT COUNT

	FLOORS	STUDIO	1 BDRM	1 BDRM ADA	2 BDRM	2 BDRM LOFT	# OF UNITS
WEST WING	3	21	17	5	2	2	47
NORTH WING	4	21	32	0	13	2	68
EAST WING	4	39	28	0	16	4	87

TOTALS 81 82 5 31 8 202

C:\PRA\DAC\Local Project Files\140243-02-A-central\A114_microsm.dwg

2/5/2015 1:38:54 PM



1 FOURTH FLOOR PLAN
A 204 1/16" = 1'-0"

AREA	PARKING	COMMERCIAL	APARTMENTS	TOTALS
LOWER LEVEL	77,359 sf	-	-	77,359 sf
FIRST FLOOR	-	13,105 sf	45,922 sf	59,026 sf
SECOND FLOOR	-	-	-	58,055 sf
THIRD FLOOR	-	-	-	58,055 sf
FOURTH FLOOR	-	-	-	39,538 sf
MEZZANINE/LOFT	-	-	-	1,600 sf
WEST WING				56,865 sf
NORTH WING				71,366 sf
EAST WING				86,027 sf
CONNECTORS				2,016 sf
BUILDING				293,633 sf

UNIT COUNT	FLOORS	STUDIO	1 BDRM	1 BDRM ADA	2 BDRM	2 BDRM LOFT	# OF UNITS
WEST WING	3	21	17	5	2	2	47
NORTH WING	4	21	32	0	13	2	68
EAST WING	4	39	28	0	16	4	87
TOTALS		81	82	5	31	8	202

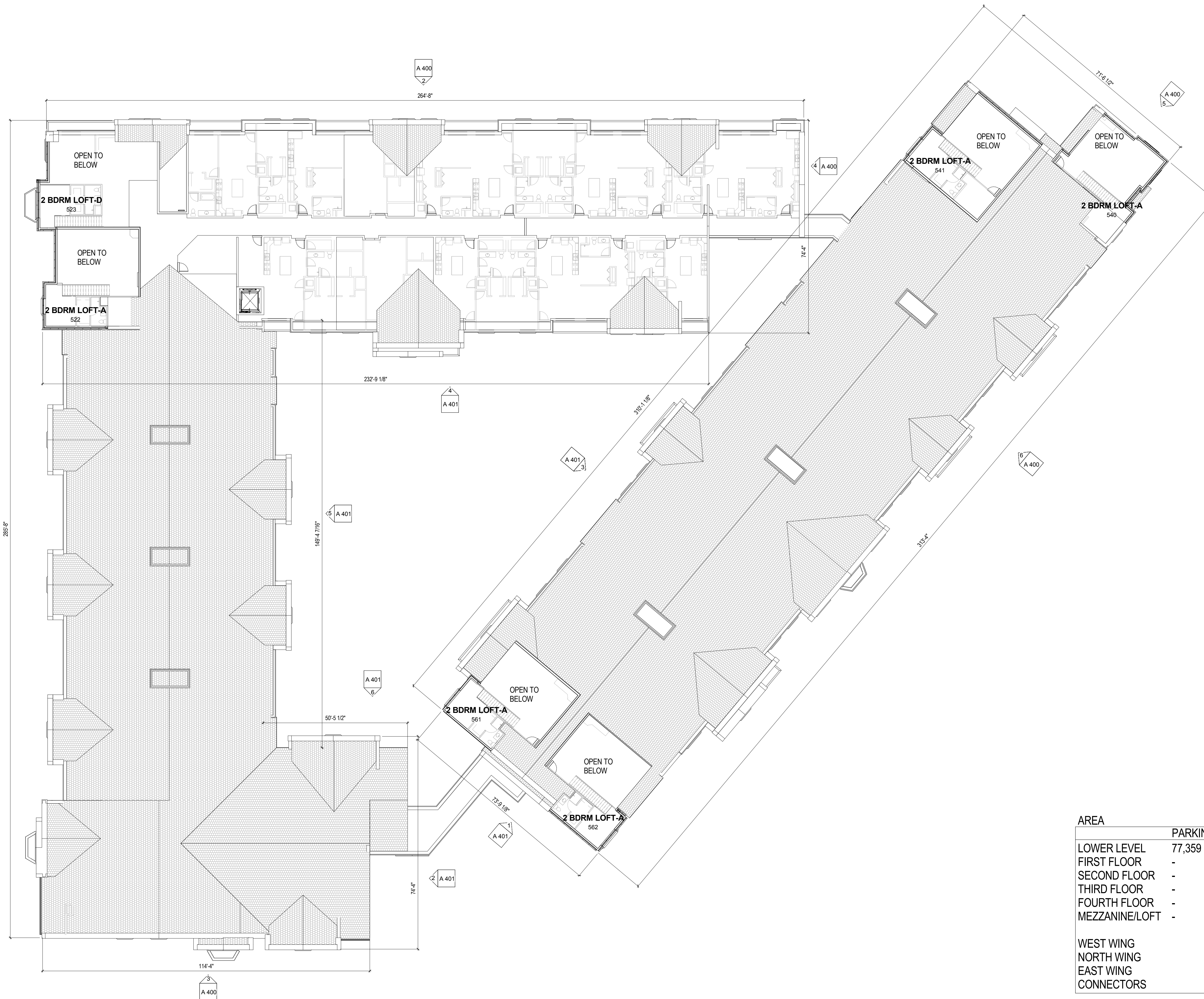
NOT FOR CONSTRUCTION
© Plunkett Raysich Architects, LLP

Fox Head Residences - Common Council Set
Maple Avenue, Waukesha, Wisconsin

Drawn By: Author
Date: 2/3/14
Job No.: 140243-02
Sheet No.:

A 204

pra
PLUNKETT RAYSICH ARCHITECTS, LLP
11000 west park place milwaukee, wisconsin 53224 1-414-359-3060
2310 crossroads drive suite 2000 madison, wisconsin 53718 1-608-240-9900
1613 fruitville road suite 3 sarasota, florida 34236 1-941-348-3618
intelligent designs. inspired results. | www.praich.com



1 MEZZANINE FLOOR PLAN
A 205 1/16" = 1'-0"

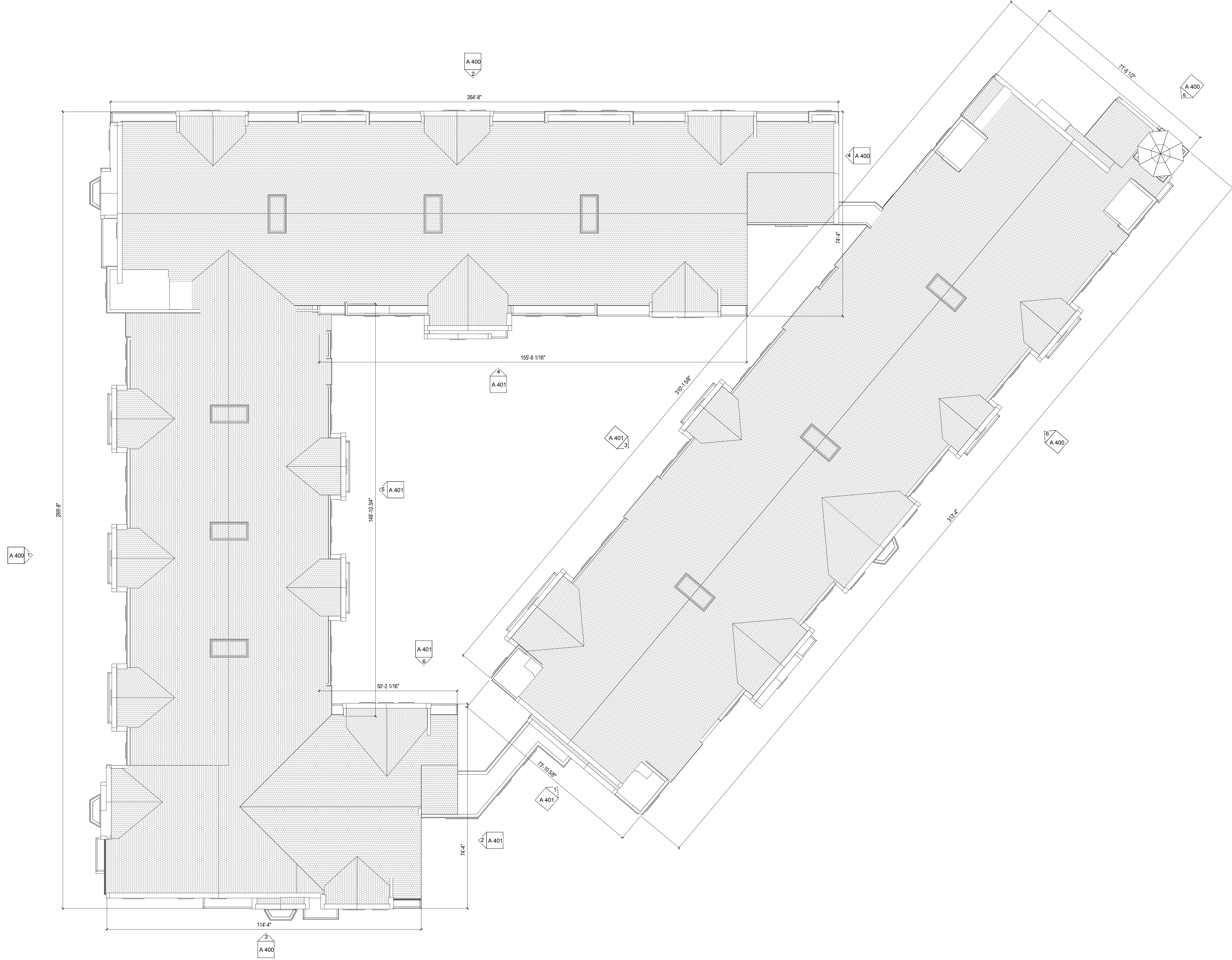
AREA	PARKING	COMMERCIAL	APARTMENTS	TOTALS
LOWER LEVEL	77,359 sf	-	-	77,359 sf
FIRST FLOOR	-	13,105 sf	45,922 sf	59,026 sf
SECOND FLOOR	-	-	-	58,055 sf
THIRD FLOOR	-	-	-	58,055 sf
FOURTH FLOOR	-	-	-	39,538 sf
MEZZANINE/LOFT	-	-	-	1,600 sf
WEST WING				56,865 sf
NORTH WING				71,366 sf
EAST WING				86,027 sf
CONNECTORS				2,016 sf

BUILDING 293,633 sf

UNIT COUNT

	FLOORS	STUDIO	1 BDRM	1 BDRM ADA	2 BDRM	2 BDRM LOFT	# OF UNITS
WEST WING	3	21	17	5	2	2	47
NORTH WING	4	21	32	0	13	2	68
EAST WING	4	39	28	0	16	4	87

TOTALS 81 82 5 31 8 202



1 ROOF PLAN
A 210 1/16" = 1'-0"

NOT FOR CONSTRUCTION

© Plunkett Raysich Architects, LLP

Drawn By:
Author

Date:
2/3/14

Job No.:
140243-02

Sheet No.:
A 210

Fox Head Residences - Common Council Set

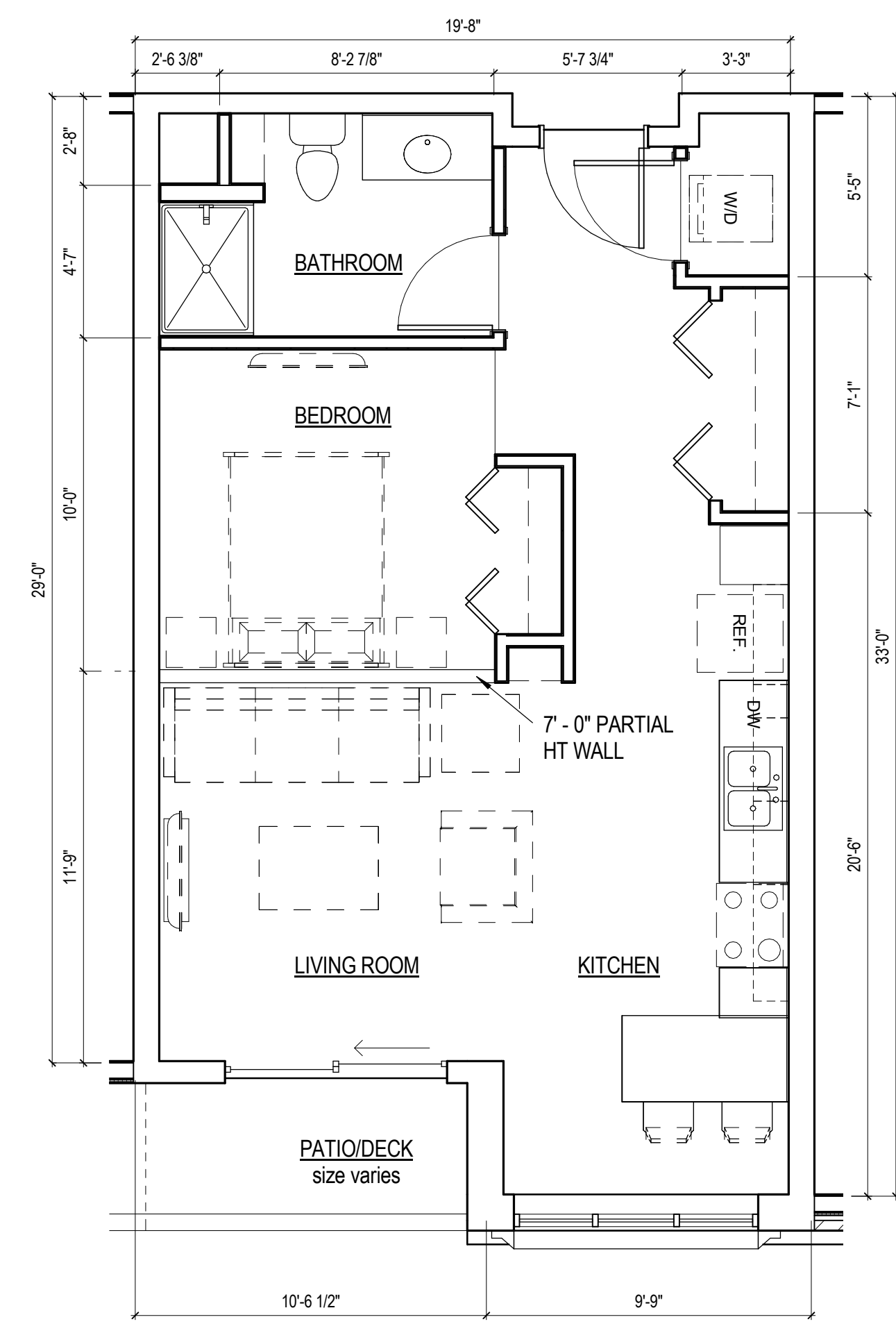
Maple Avenue, Waukesha, Wisconsin

Revisions

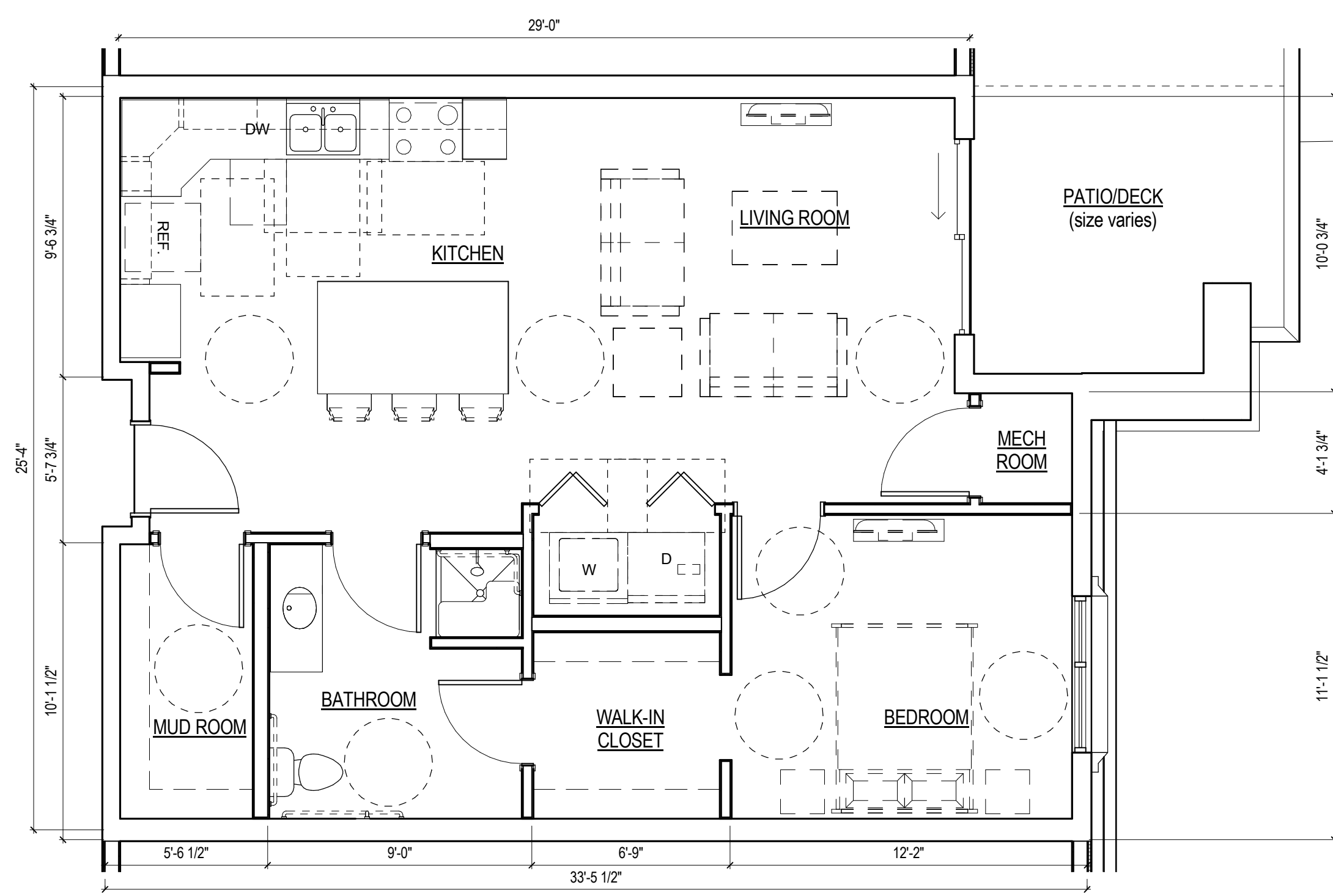
Revisions

pr
PLUNKETT RAYSICH
ARCHITECTS, LLP
intelligent designs. inspired results. | www.praich.com

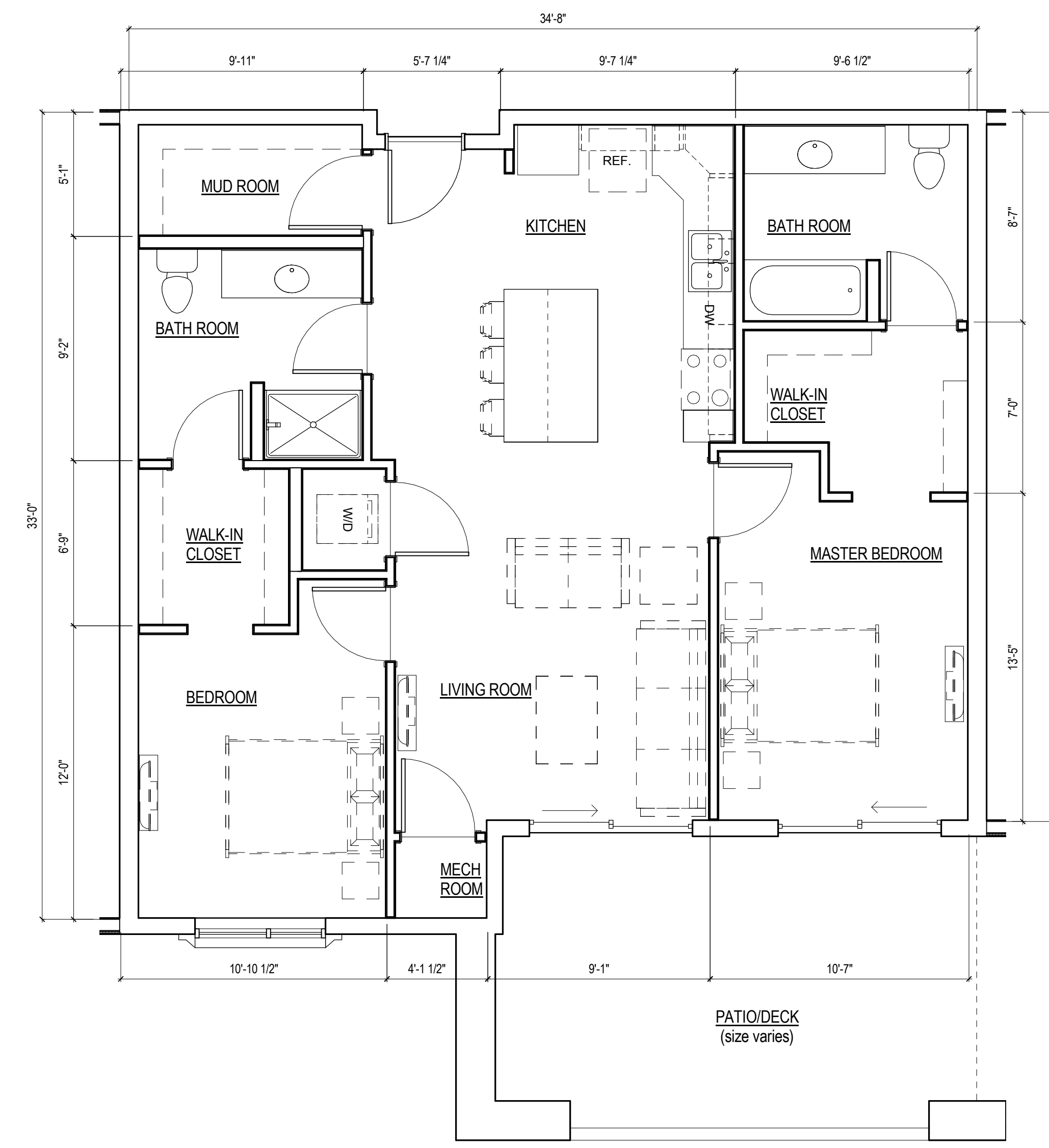
11000 west park place milwaukee, wisconsin 53224 t 414 359 3060
2310 crossroads drive suite 2000 madison, wisconsin 53718 t 608 240 9900
1613 fruitville road suite 3 sarasota, florida 34236 t 941 348 3618



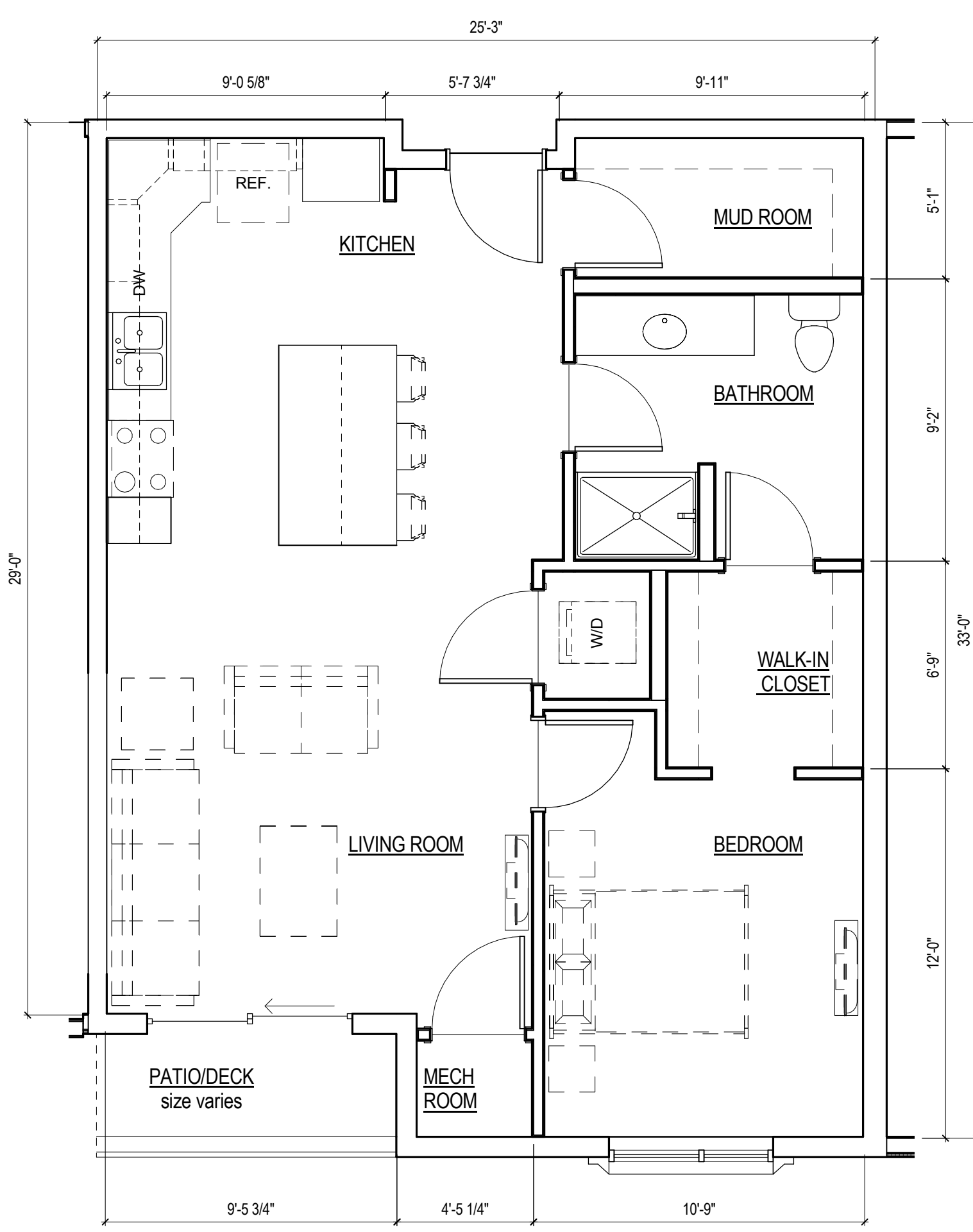
1 STUDIO UNIT - A UNIT
A 232 1/4" = 1'-0"



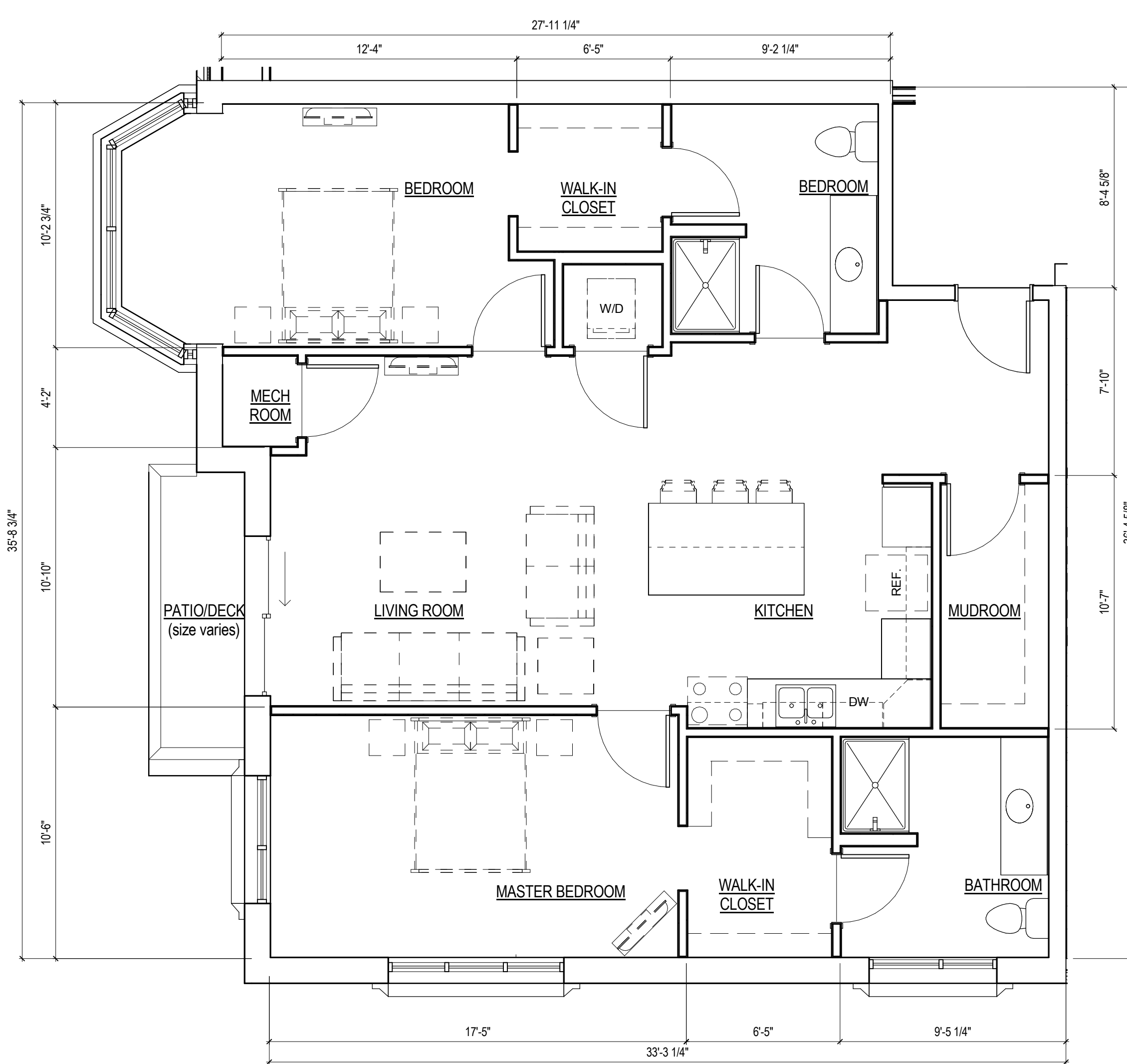
6 ONE BEDROOM - B UNIT ADA
A 232 1/4" = 1'-0"



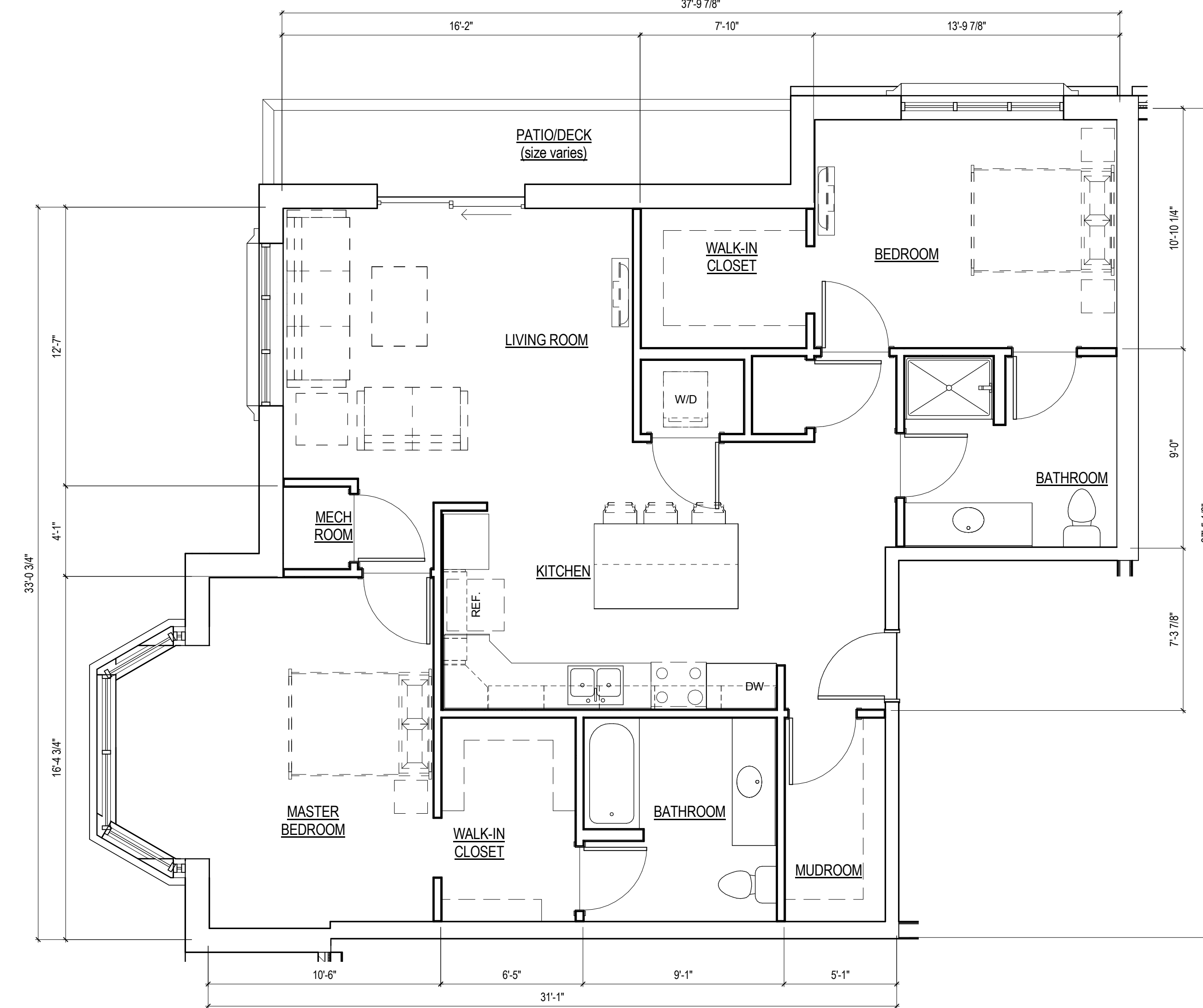
2 TWO BEDROOM - A UNIT
A 232 1/4" = 1'-0"



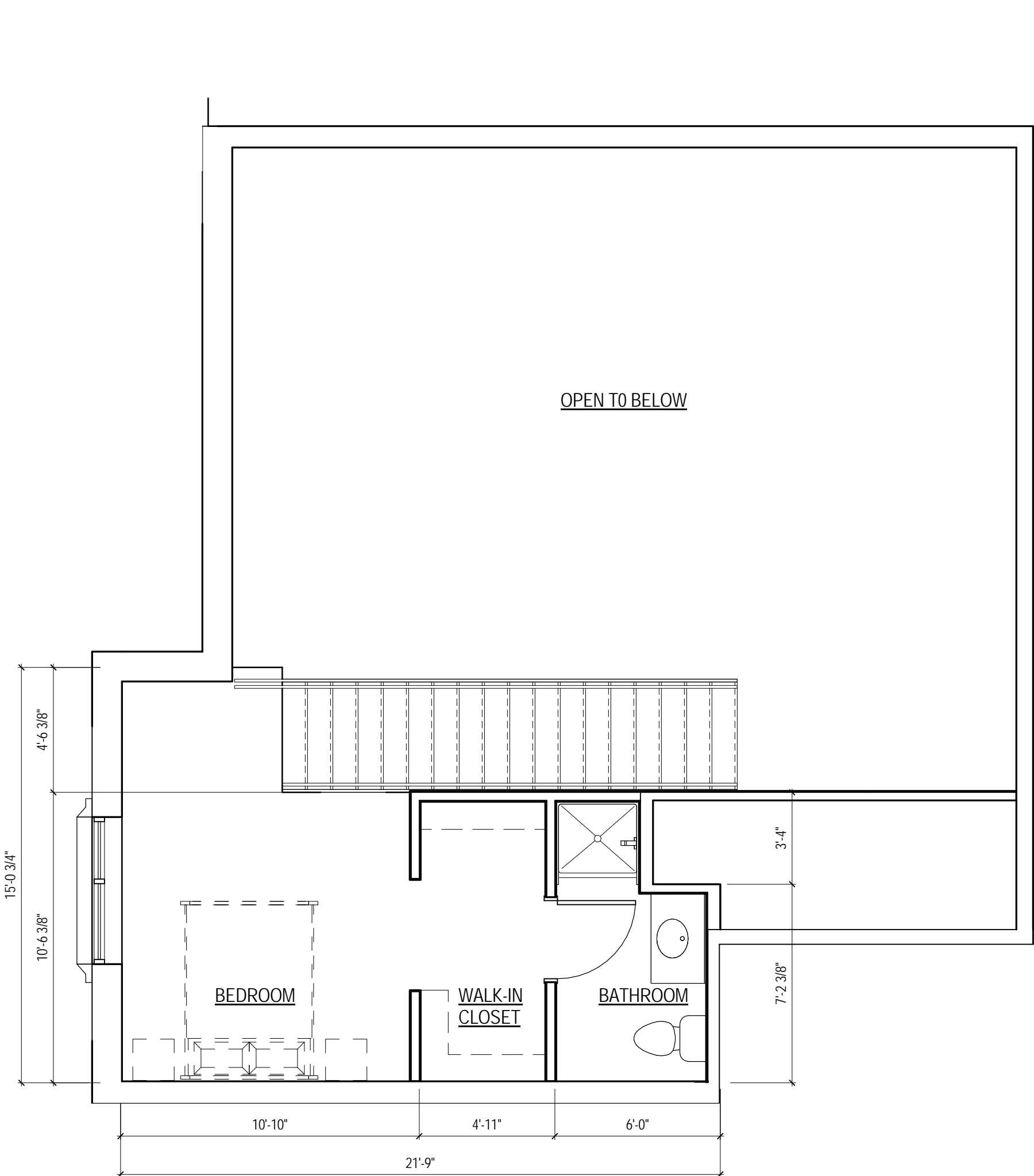
5 ONE BEDROOM - A UNIT
A 232 1/4" = 1'-0"



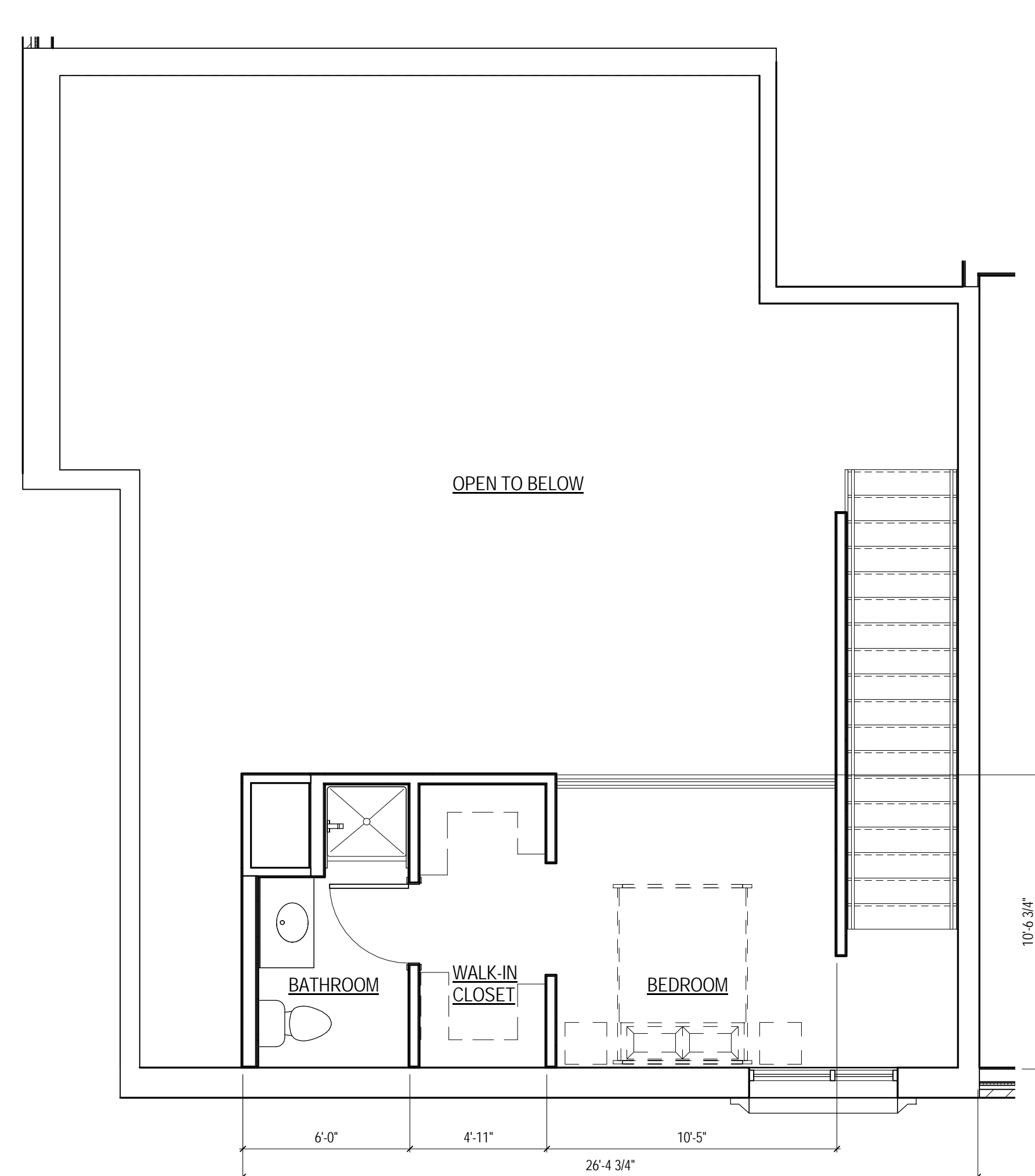
3 TWO BEDROOM - B UNIT
A 232 1/4" = 1'-0"



4 TWO BEDROOM - C UNIT
A 232 1/4" = 1'-0"



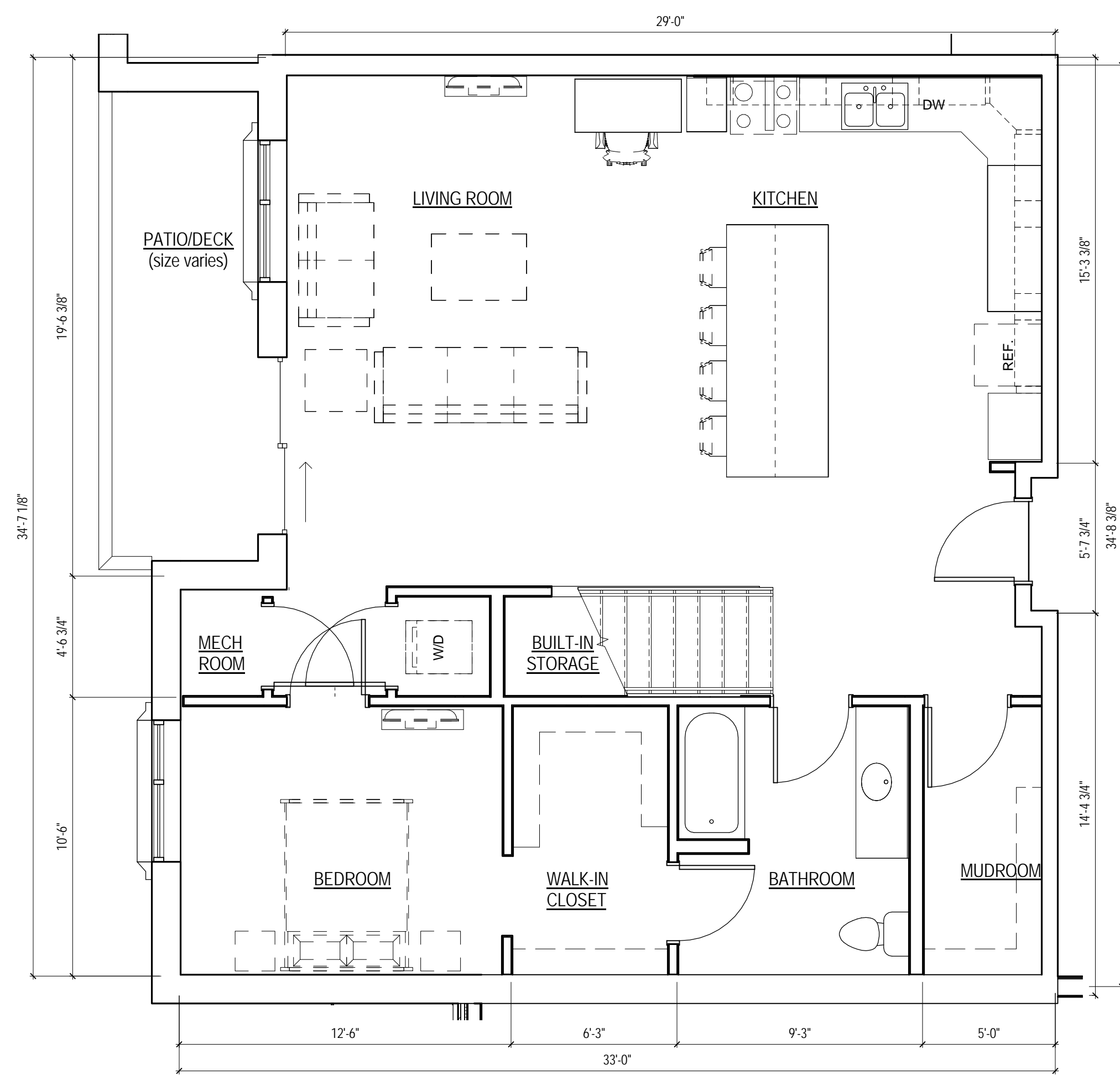
2 LOFT UNIT A - SECOND FLOOR
 A 233 1/4" = 1'-0"



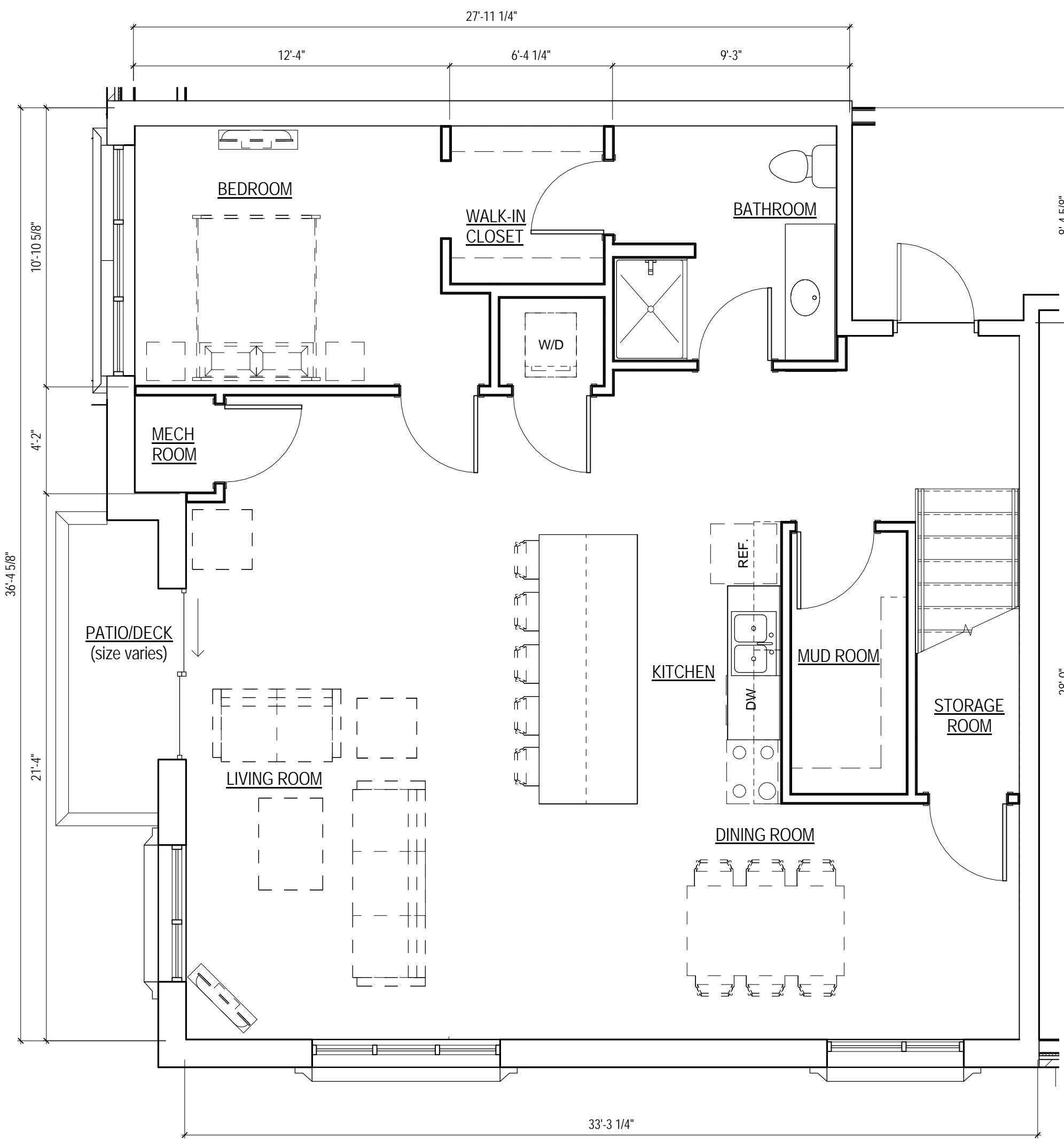
4 LOFT UNIT B - SECOND FLOOR
 A 233 1/4" = 1'-0"



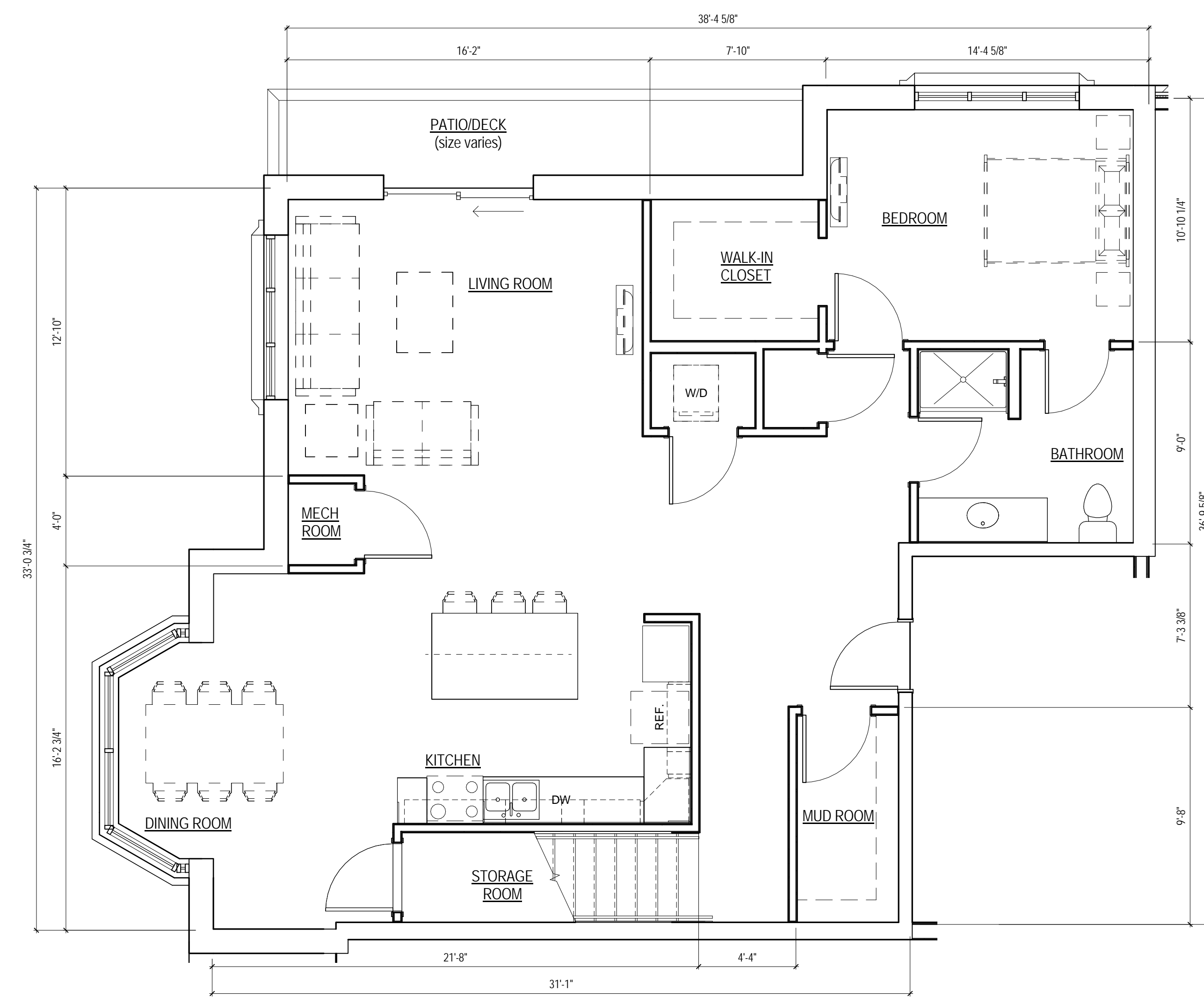
6 LOFT UNIT C - SECOND FLOOR
 A 233 1/4" = 1'-0"



1 LOFT UNIT A - FIRST FLOOR
 A 233 1/4" = 1'-0"



3 LOFT UNIT B - FIRST FLOOR
 A 233 1/4" = 1'-0"



5 LOFT UNIT C - FIRST FLOOR
 A 233 1/4" = 1'-0"

2/5/2015 1:48:24 PM C:\PRA\DAC\Local Project Files\140243-02-A-Common\A114_microsoft.rvt

NOT FOR CONSTRUCTION
 © Plunkett Raysich Architects, LLP

Drawn By: Author
 Date: 2/3/14
 Job No.: 140243-02
 Sheet No.:

A 233

Fox Head Residences - Common Council Set
 Maple Avenue, Waukesha, Wisconsin

Revisions



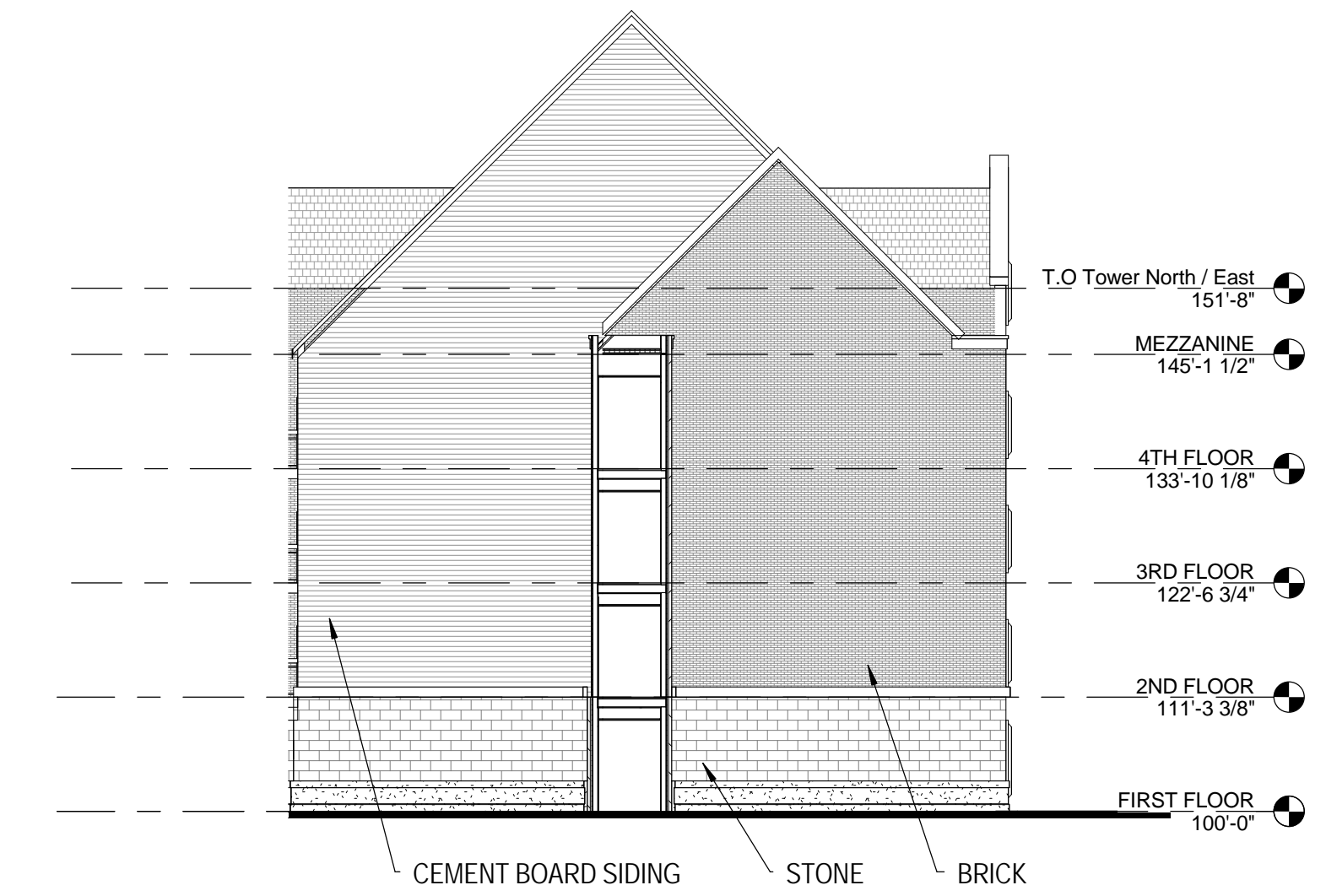
3 South Elevation
A 400 1/16" = 1'-0"



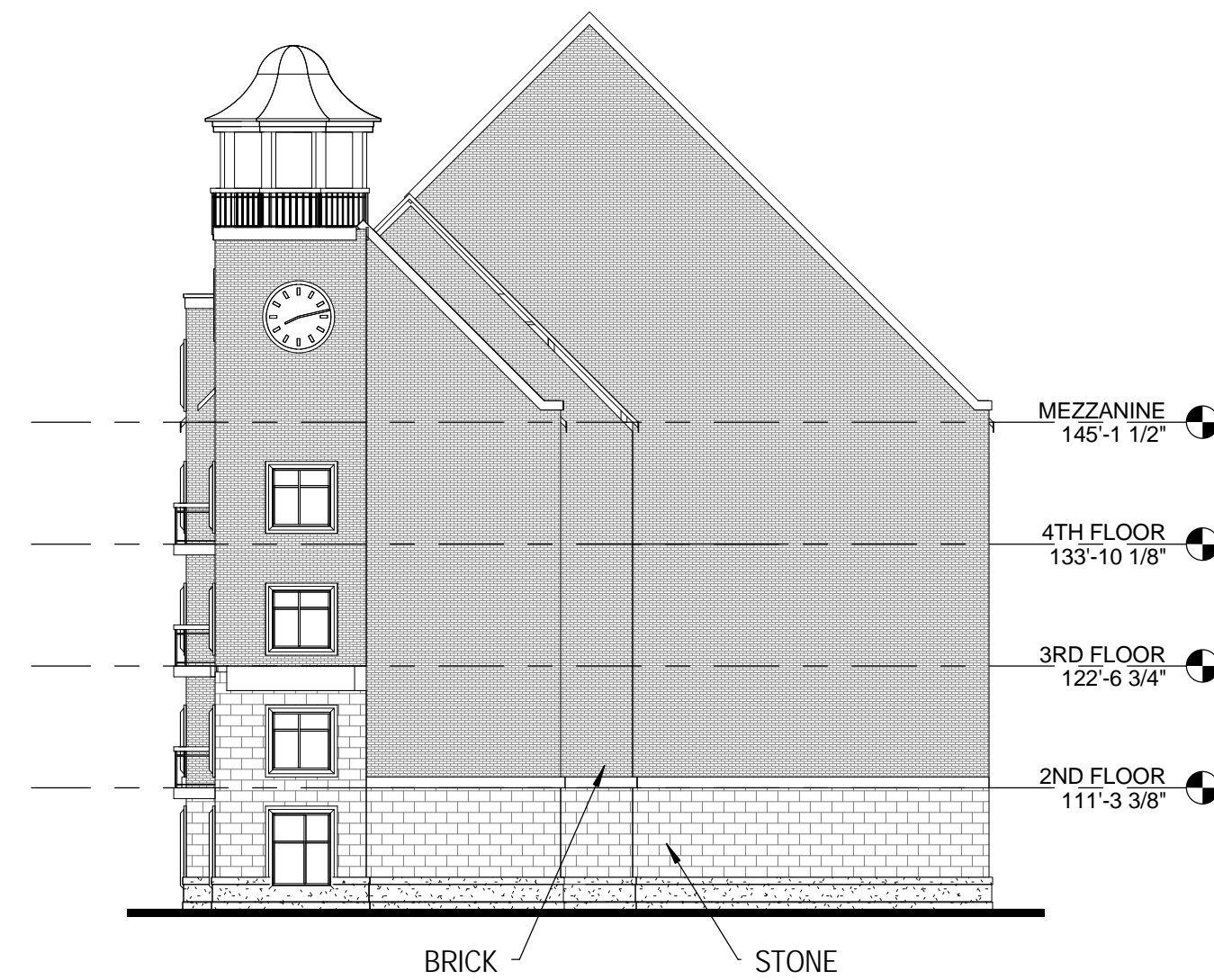
1 West Elevation - Maple Ave
A 400 1/16" = 1'-0"



2 North Elevation - 1/16
A 400 1/16" = 1'-0"



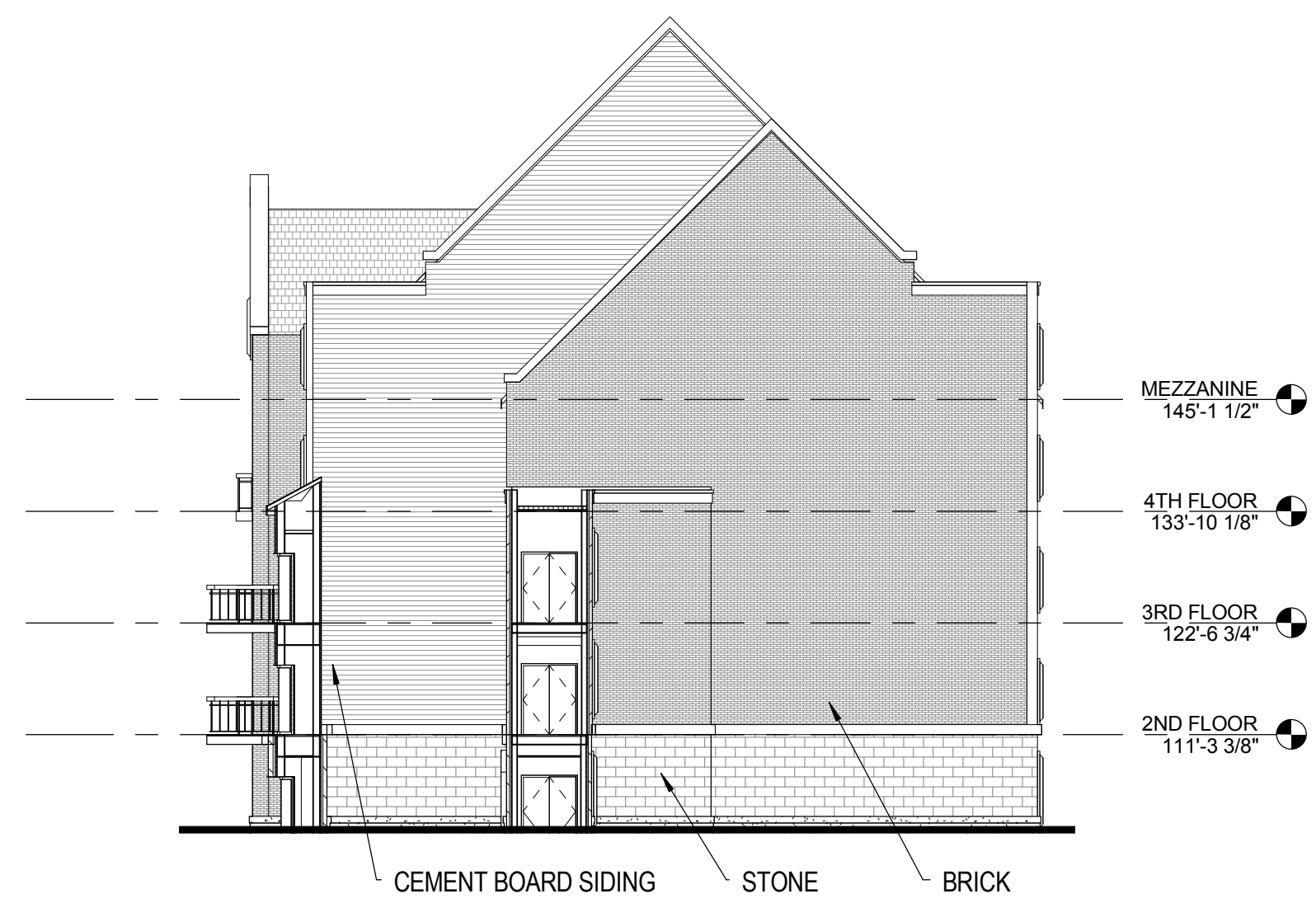
4 North Elevation - Side - 1/16
A 400 1/16" = 1'-0"



5 East Elevation - Bell Tower
A 400 1/16" = 1'-0"



6 East Elevation - Exterior
A 400 1/16" = 1'-0"



1 East Elevation - Side A - 1/16
 A 401 1/16" = 1'-0"



3 East Elevation - Court Yard - 1/16
 A 401 1/16" = 1'-0"



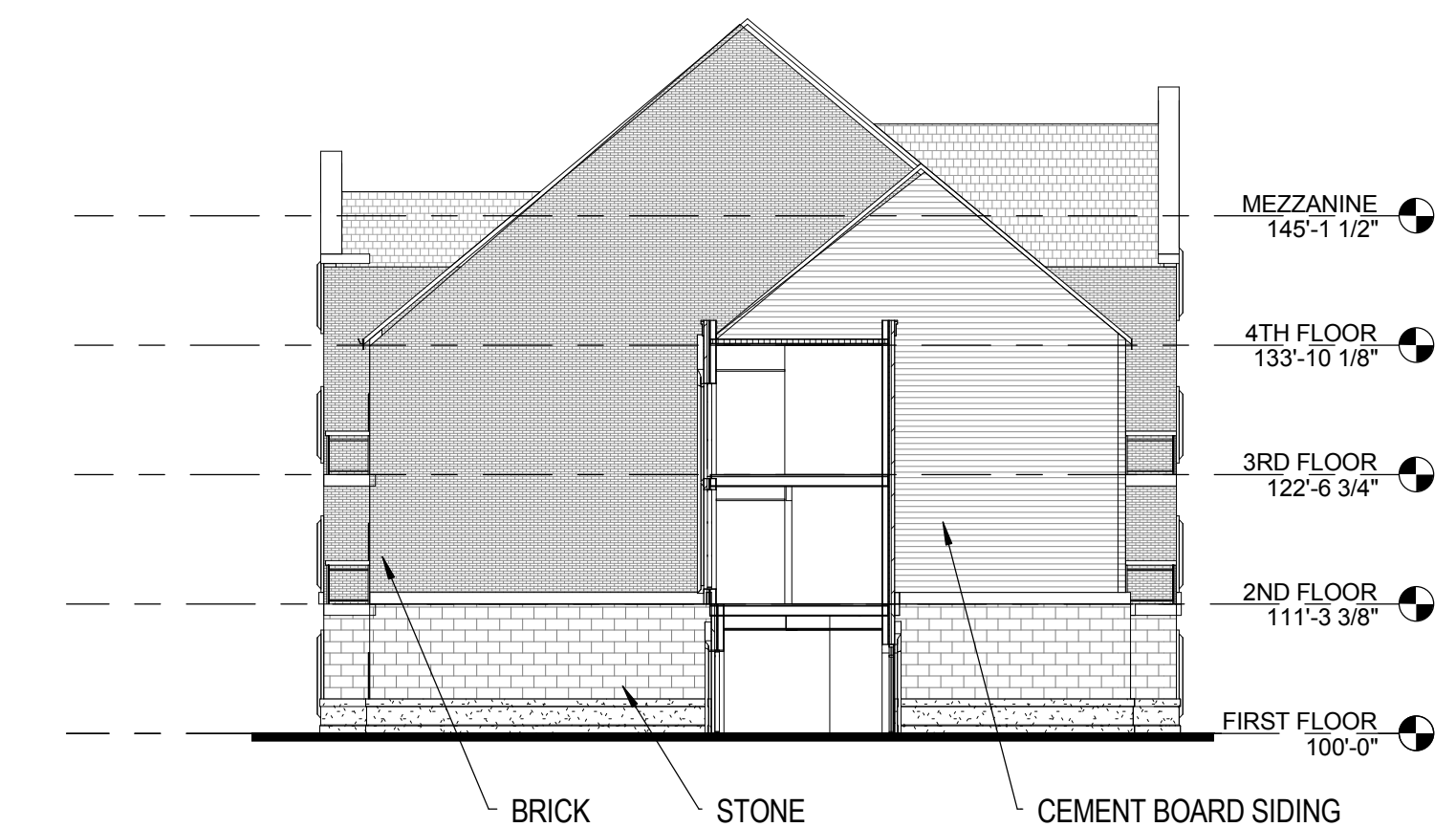
4 North Elevation - Court Yard
 A 401 1/16" = 1'-0"



5 West Elevation - Court Yard
 A 401 1/16" = 1'-0"



6 South Elevation - Court Yard
 A 401 1/16" = 1'-0"



2 West Elevation - Side - 1/16
 A 401 1/16" = 1'-0"