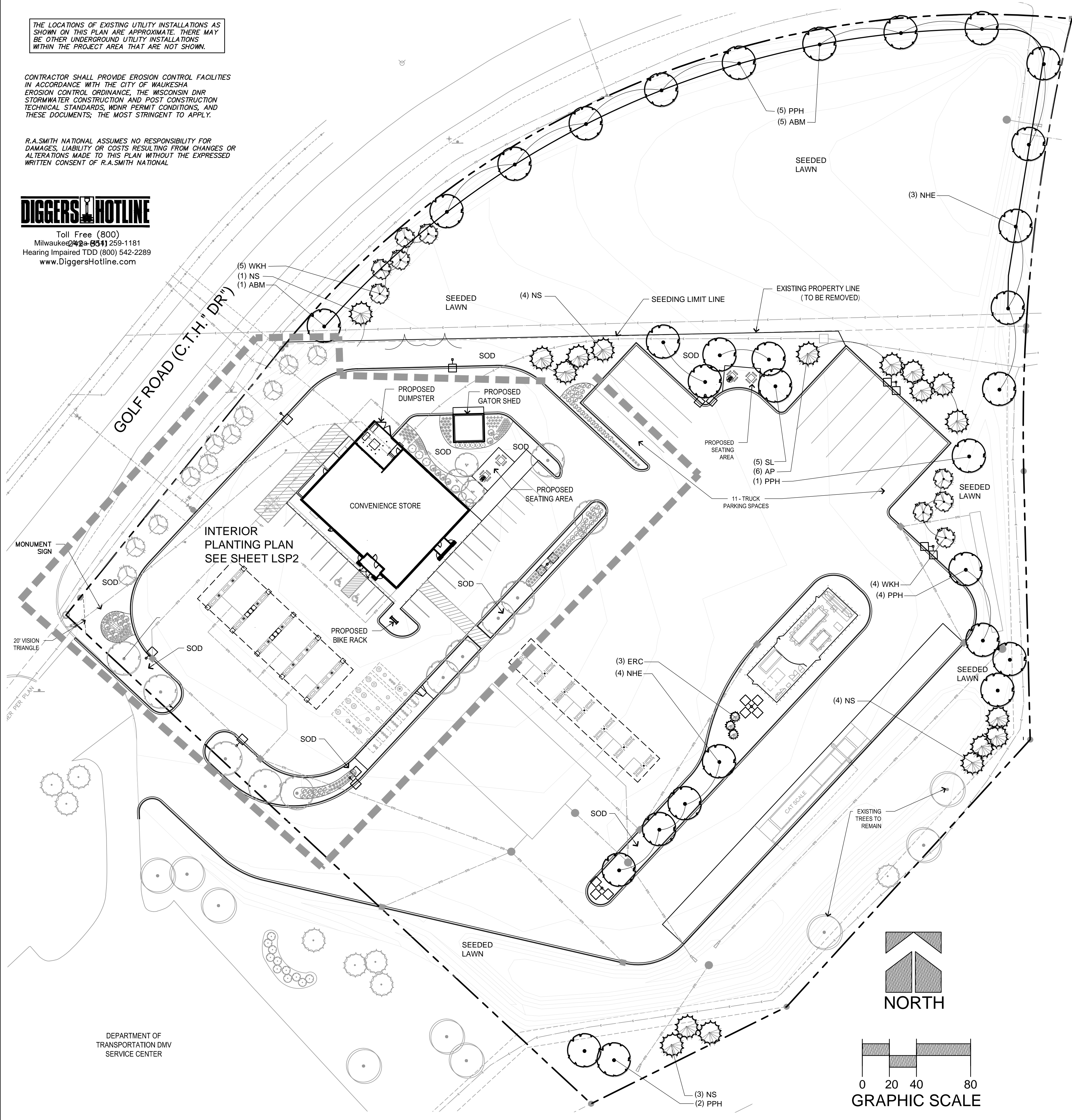


R.A.SMITH NATIONAL ASSUMES NO RESPONSIBILITY FOR DAMAGES, LIABILITY OR COSTS RESULTING FROM CHANGES OR ALTERATIONS MADE TO THIS PLAN WITHOUT THE EXPRESSED WRITTEN CONSENT OF R.A.SMITH NATIONAL

# DIGGERS HOTLINE

Toll Free (800)  
Milwaukee 242-8541 259-1181  
Hearing Impaired TDD (800) 542-2289  
[www.DiggersHotline.com](http://www.DiggersHotline.com)



## PLANT SCHEDULE - EXTERIOR

EVERGREEN TREES		QTY	COMMON NAME	BOTANICAL NAME	SIZE	ROOT	REMARKS
ERC	3	Eastern Red Cedar	Juniperus virginiana	6' HT	B&B	Semi-sheared, fully branched to ground	
NS	12	Norway Spruce	Picea abies	6' HT.	B&B	Semi-sheared, fully branched to ground	
AP	6	Austrian Pine	Pinus nigra	6' HT.	B&B	Semi-sheared, fully branched to ground	
ORNAMENTAL TREES		QTY	COMMON NAME	BOTANICAL NAME	SIZE	ROOT	REMARKS
WKH	9	'Winter King' Hawthorn	Crataegus viridis 'Winter King'	2" CAL	B&B	Full, matching heads	
SHADE TREES		QTY	COMMON NAME	BOTANICAL NAME	SIZE	ROOT	REMARKS
ABM	6	Autumn Blaze Maple	Acer freemanii 'Autumn Blaze'	2 1/2" CAL	B&B	Full, matching heads	
PPH	12	Prairie Pride Hackberry	Celtis occidentalis 'Prairie Pride'	2 1/2" CAL	B&B	Full, matching heads	
SL	5	Skyline Honey Locust	Gleditsia triacanthos 'Skyline'	2 1/2" CAL	B&B	Full, matching heads	
NHE	7	New Horizon Elm	Ulmus x 'New Horizon'	2 1/2" CAL	B&B	Full, matching heads	

## EXISTING TREES

## GENERAL LANDSCAPE NOTES

- Contractor responsible for contacting Diggers Hotline to have site marked prior to any digging or workwork.
2. Contractor to verify all plant quantities shown on plant list and verify with plan. Report any discrepancies immediately to landscape architect and/or general contractor.
3. All plantings shall comply with standards as described in American Standard of Nursery Stock (ANSI Z60.1 (latest version). Landscape architect reserves the right to inspect, and potentially reject, any plants that are inferior, compromised, undersized, diseased, improperly transported, installed incorrectly or damaged.
4. Any potential plant substitutions must be approved by the landscape architect. All plants must be installed as per sizes shown on plant material schedule, unless approved by landscape architect. Any changes to sizes shown on plan must be submitted in writing to the landscape architect prior to installation.
5. Topsoil in parking islands: all parking lot islands to be backfilled with topsoil to a minimum depth of 18" to insure long term plant health. Topsoil should be placed to within 3" of finish grade by general / grading contractor during rough grading operations. The landscape contractor to be responsible for the fine grading of all planting beds and lawn areas. Crown all planting islands a minimum of 6" to provide proper drainage, unless otherwise specified.
6. Topsoil - landscape contractor to evaluate condition of site grading prior to performing work, and determine if additional topsoil is required to properly install the plantings and turf areas. If required, provide an estimate in bid / proposal reflecting the cost per cubic yard to provide, haul and spread additional topsoil, along with an estimate of the quantity of topsoil which may be required.
7. Tree planting: plant all trees slightly higher than finished grade at root flare. Remove excess soil from top of root ball, if needed. Remove and discard non-biodegradable bark wrapping and support wire. Removed biodegradable burlap and wire cage (if applicable) from top one-third of rootball and carefully bend remaining wire down to the bottom of hole once the tree has been placed into the hole and will no longer be moved. Score the remaining two-thirds of burlap and remove twine. Provide slow-release fertilizer packets per planting details.
8. Tree planting: backfill tree planting holes 80% existing soil removed from excavation and 20% plant starter mix. Avoid any air pockets and do not tamp soil down. Avoid any wire mesh, heavy mulch or bags. When hole is two-thirds full, trees shall be watered thoroughly, and water left to soak in before proceeding. Provide a 3" deep, 4 ft. diameter shredded hardwood bark mulch ring around all lawn trees. Do not build up any mulch onto trunk of any tree. Trees that are installed incorrectly will be replaced at the time and expense of the landscape contractor.
9. Shrub planting: all shrubs to be potted planted with a 50/50 mix of plant starter and topsoil. Install topsoil into all planting beds as needed to achieve proper grade and displace undesirable soil (see planting detail). Remove all excessive gravel, clay and stones from plant beds prior to planting. When hole is two-thirds full, shrubs shall be watered thoroughly, and water left to soak in before proceeding. Provide slow-release fertilizer packets per planting details.
10. Mulching: all tree and shrub planting beds to receive a 3" deep layer of high quality shredded hardwood bark mulch (not environmental). All perennial planting areas to receive a 2" layer and groundcover areas a 1-2" layer of the same mulch. Do not mulch annual flower beds (if applicable). Do not allow mulch to contact plant stems and tree trunks.
11. Edging: edge all planting beds with a 4" deep spaded edge (shovel cut or mechanical). Bedlines are to be cut crisp, as per plan. A clean definition between lawn area and plant bed is required.
12. Plant bed preparation: all perennial, annual and groundcover areas are required to receive a blend of organic soil amendments prior to installation. Rototill the following materials, at the following ratio, into existing or installed topsoil to a depth of approx. 8" -
- Per every 100 square feet of bed area add:
- 2 cu. ft. bale of peat moss
  - 2 lbs. of 5-10-5 garden fertilizer
  - 1/4 cu. yard of composted manure
- Note: Bulk plant material will not be an acceptable alternative for the above soil amendments, unless approved by landscape architect prior to installation.
13. Pre-emergent herbicide: apply a pre-emergent herbicide per manufacturer's specifications to all planting beds after all planting is installed.
14. Lawn installation for all seeded turfgrass areas: remove / kill off any existing unwanted vegetation prior to seeding. Prepare the topsoil (if adequate) or provide as in No. 6 and seed by broadcast or by surface sowing 1" or larger. Apply a starter fertilizer and specified seed uniformly and provide mulch covering suitable to germinate and establish turf. Provide seed and fertilizer specifications to landscape architect and owner prior to installation. Erosion control measures are to be used in swales and on steep grades, where applicable. Methods of installation may vary at the discretion of the landscape contractor on higher relief areas. Establish and guarantee a smooth, uniform, quality turf. A minimum depth of 3" of blended, prepared and non-compacted topsoil is required for all lawn areas. If straw mulch is used as a mulch covering, a tackifier may be necessary to avoid wind damage. Marsh hay containing reed canary grass is not acceptable as a mulch covering.
- An acceptable quality turf is defined as having:
- No bare spots larger than 1 square foot
  - No more than 10% of the total area with bare spots larger than 1 square foot
  - A uniform coverage throughout all turf areas
15. Seed type / for lawn areas - use only a premium quality seed mix which will germinate quickly installed at recommended rates. Premium blend seed mix example (or equivalent): 50% blended bluegrass, 25% creeping red fescue, 25% perennial ryegrass applied at 5lbs per 1,000 SF. Provide seed specifications to owner / landscape architect prior to installation.
16. Lawn installation for all sodded turfgrass areas: contractor to furnish and prepare blended topsoil (3" min.) and sod bed, removing all debris and stones 1/2" or larger. Apply a 10-10-10 starter fertilizer uniformly throughout areas prior to laying the sod. Use only premium sod blend according to TPI (revised 1998) and ASPA standards. Install sod uniformly with staggered joints, laid tightly end to end and side to side. Roll sod with a walk behind roller and water immediately upon installation to a 3" depth. Stake any sod installed on steep slopes or in swales, etc. Contractor is responsible to provide a smooth, uniform, healthy turf, and is responsible for the first two mowings of the newly installed turf, and is also responsible for the required watering during this period.
17. Warranty and replacements: all plantings are to be watered at time of planting, throughout construction and upon completion of project as required. Trees, evergreens, and shrubs to be guaranteed (100% replacement) for a minimum of one year from the date of project completion. Perennials, groundcovers, and ornamental grasses to be guaranteed for a minimum of one growing season. Perennials, groundcovers, and ornamental grasses planted after September 1st shall be guaranteed through May 31st of the following year. Only one replacement per plant will be provided during the warranty period, except for losses or replacements due to failure to comply with specified requirements. Watering and general ongoing maintenance instructions are to be supplied by landscape contractor to the owner, upon the completion of the project.
18. The landscape contractor is responsible for the watering and maintenance of all landscape areas for a period of 60 days after the substantial completion of the installation. This includes all trees, shrubs, evergreens, perennials, ornamental grasses, turf grass, meadow grass and wildflower areas. Work also includes weeding, edging, mulching (only if required), fertilizing, trimming, sweeping up grass clippings, pruning and deadheading.
19. Project completion: landscape contractor is responsible to conduct a final review of the project, upon completion, with the client / owner / representative and the general contractor to answer questions, provide care instructions (in writing) for the new plantings and turf, and insure that all specifications have been met.

Note: All landscape notes and details to be included on final construction plans.

# KWIK TRIP

# STORES

**KWIK  
STAR**

# STORES

**KWIK TRIP, Inc.**  
P.O. BOX 2107  
1626 OAK STREET  
LACROSSE, WI 54602-2107  
PH. (608) 781-8988  
FAX (608) 781-8960

**R.A. Smith National**  
*Beyond Surveying  
and Engineering*

16745 W. Bluemound Road, Brookfield, WI 53005-5938  
62-781-1000 Fax 262-781-8466, [www.rasmithnational.com](http://www.rasmithnational.com)  
Appleton, WI      Orange County, CA      Pittsburgh, PA

PRELIMINARY  
NOT FOR  
CONSTRUCTION

LANDSCAPE PLAN—EXTERIOR

CONVENIENCE STORE  
WITH DIESEL

CITY OF WAUKESHA, WISCONSIN

[illegible]