

INFORMATION  
MINIMUM FALL ZONE  
SURFACED WITH  
RESILIENT MATERIAL  
AREA

3169 SQ.FT.  
PERIMETER  
409 FT.

STRUCTURE SIZE  
59' 7" x 79' 10"

STRUCTURE IS DESIGNED  
FOR CHILDREN AGES:

- 6-23 MONTH OLDS
- 2-5 YEAR OLDS
- 5-12 YEAR OLDS
- 13 + YEAR OLDS



Registered  
to ISO 9001



Registered  
to ISO 14001

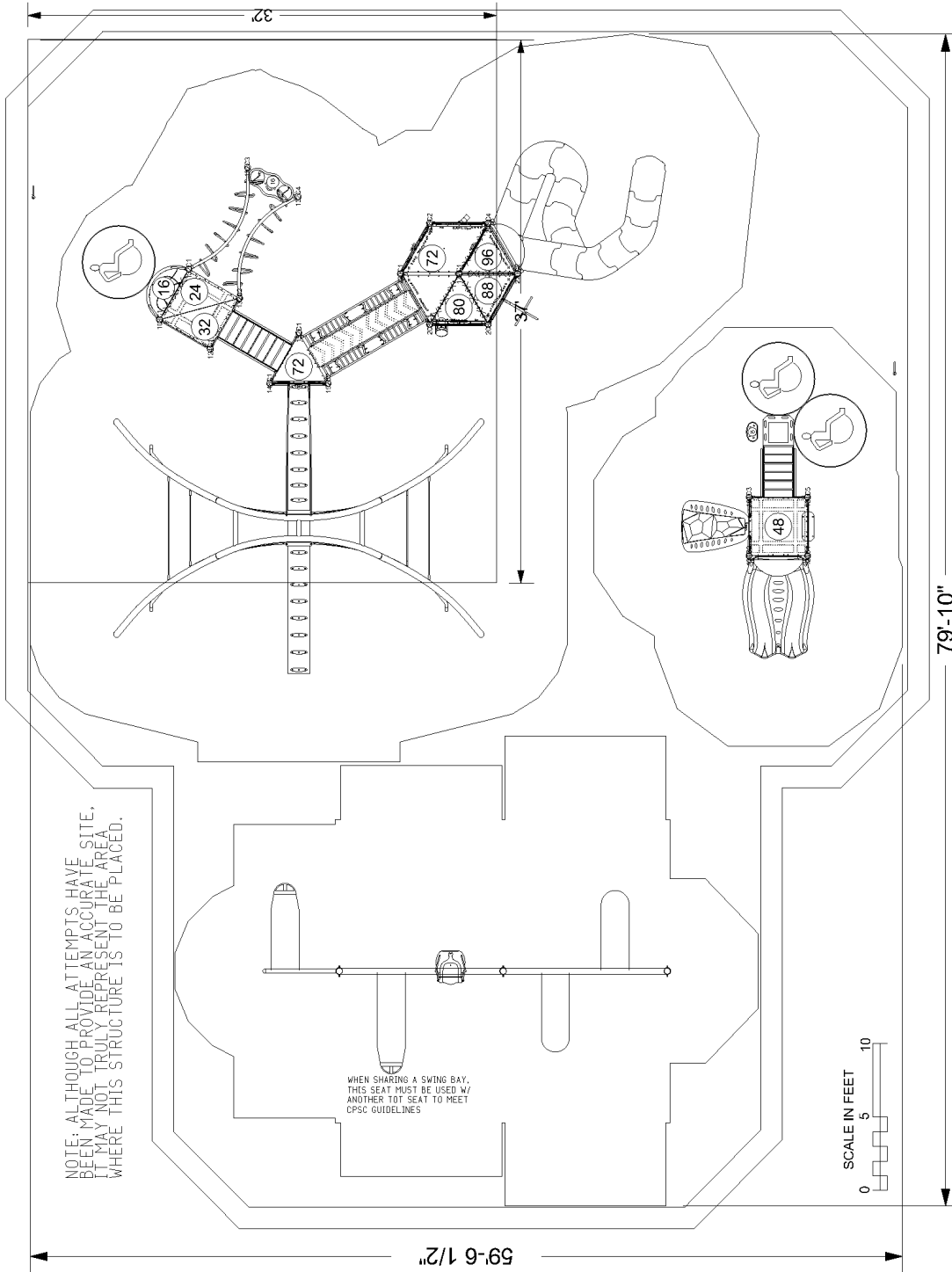


To verify product certification,  
visit [www.ipema.org](http://www.ipema.org)

The play components identified  
in this plan are IPEMA  
certified. The use and layout of  
these components conform to the  
requirements of ASTM F1487.  
To verify product certification,  
visit [www.ipema.org](http://www.ipema.org)

The space requirements shown  
here are to ASTM standards.  
Requirements for other standards  
may be different.

The use and layout of play  
components identified in this plan  
conform to the CPSC guidelines.  
U.S. CPSC recommends the  
separation of age groups in  
playground layouts.



**WARNING!**

ACCESSIBLE SAFETY SURFACING MATERIAL IS REQUIRED BENEATH AND AROUND THIS EQUIPMENT.  
FOR SLIDE FALL ZONE SURFACING AREA SEE CPSC's Handbook for Public Playground Safety.  
PLATFORM HEIGHTS ARE IN INCHES ABOVE RESILIENT MATERIAL.

**ADA ACCESSIBILITY GUIDELINE (ADAAG CONFORMANCE)**

NUMBER OF PLAY EVENTS:	24	REQD:	0
NUMBER OF ELEVATED PLAY EVENTS:	13	PROVIDED:	0
NUMBER OF ELEVATED PLAY EVENTS ACCESSIBLE BY RAMP:	PROVIDED: 13	REQD:	7
NUMBER OF ELEVATED PLAY EVENTS ACCESSIBLE BY TRANSFER SYSTEM:	PROVIDED: 11	REQD:	4
NUMBER OF GROUND LEVEL PLAY EVENTS:	PROVIDED: 7	REQD:	3



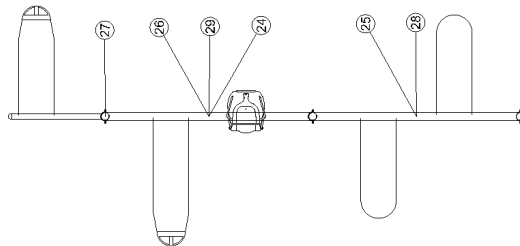
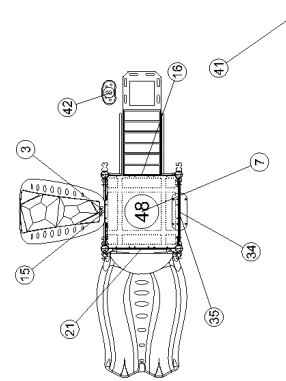
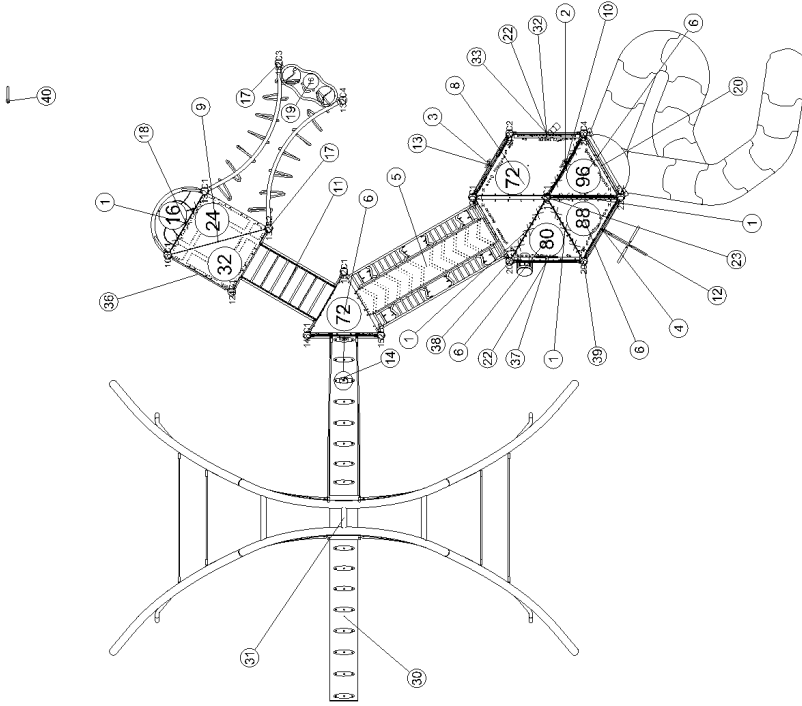
January 28, 2021

SERIES: Basics, Intensity, Nucleus  
SITE PLAN  
DRAWN BY: Stevie Rosenkranz

Priedeman Park  
2010 Saratoga Rd  
Waukesha, WI 53186

Lee Recreation, LLC  
142-136100-2

ITEM	COMP.	DESCRIPTION
1	270-0050	8" CLOSURE PLATE
2	270-0112	UNITARY ENCLOSURE
3	270-0120	EVOLUTION UNITARY ENCLOSURE
4	270-0121	EVOLUTION STANCHION
5	270-0123	EVOLUTION ARCHED CATWALK
6	270-0129	TRIANGLE PLATFORM
7	270-0130	SQUARE PLATFORM
8	270-0132	HALF HEXAGON PLATFORM
9	270-0136	SPLIT SQUARE PLATFORM
10	270-0299	ABSTRACT PLATFORM LADDER
11	370-0041	EVOLUTION 40" TRANSITION ST.
12	370-0113	LINKING RING CLIMBER 80" 96"
13	370-0865	TREE BRANCH CLIMBER 72"
14	370-1634	LEVEL X LINK
15	370-1645	MANITOU CLIMBER 48"
16	370-1659	TRANSFER STATION, HANDRAIL
17	370-1675	STRAIGHT OVERHEAD, NUCLEU
18	470-0075	HILLSIDE SLIDE ENTRANCE PLA
19	470-0101	DYNAMIC PAD
20	470-0574	VIPER II OVER UNDER 96
21	470-0755	LUGE SLIDE, 48"-56"
22	470-0808	EVOLUTION ROOF BOTTOM EDG
23	470-0813	EVOLUTION HEX ROOF
24	550-0099	TOT SEAT, 7' & 8' SINGLE, STD C
25	550-0112	BELT SEAT, 8' PAIR, STD CHAIN
26	550-0171	FREEDOM SWING SEAT, 8' BEAN
27	550-0183	TOT BAY, ADD-ON, GALY CHAIN
28	550-0201	SINGLE POST SWING ASSEMBLY
29	550-0202	SINGLE POST SWING ADD-ON 5'
30	560-2605	LEVEL X GROUND LINK
31	560-2613	LEVEL X ALLY CENTER
32	570-0100	EVOLUTION BARRIER
33	570-0516	TELESCOPE ASSEMBLY
34	570-0838	CLUBHOUSE COUNTER PANEL
35	570-0842	ABC 2-SIDED PLAY PANEL
36	570-1858	3-IN-A-ROW PANEL, ABOVE PLA
37	570-2666	CAR PANEL
38	570-2704	DRUM CRESCENT PANEL
39	570-2708	CHIMES CRESCENT PANEL, RIG
40	580-1315	FS SIGN, AGES 5-12
41	580-1317	FS SIGN, AGES 2-5
42	580-1364	LIL NOVO BEAN STEP



WHEN SHARING A SWING BAY,  
THIS SEAT MUST BE USED W/  
ANOTHER TOT SEAT TO MEET  
CPSIC GUIDELINES



January 28, 2021

SERIES: Basics, Intensity, Nucleus

Priedeman Park

Lee Recreation, LLC

COMPONENT PLAN

2010 Saratoga Rd

142-136100-2

DRAWN BY: Stevie Rosenkranz

Waukesha, WI 53186