

A

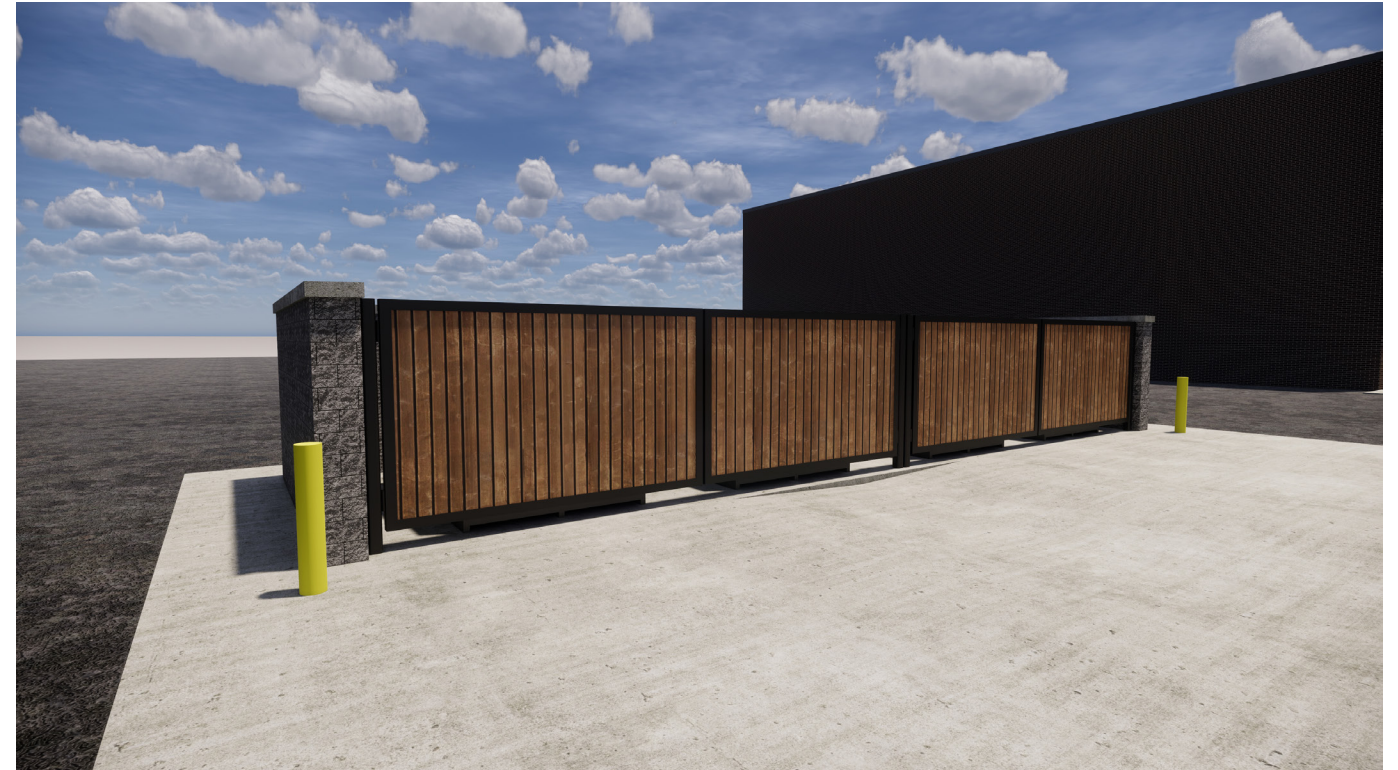
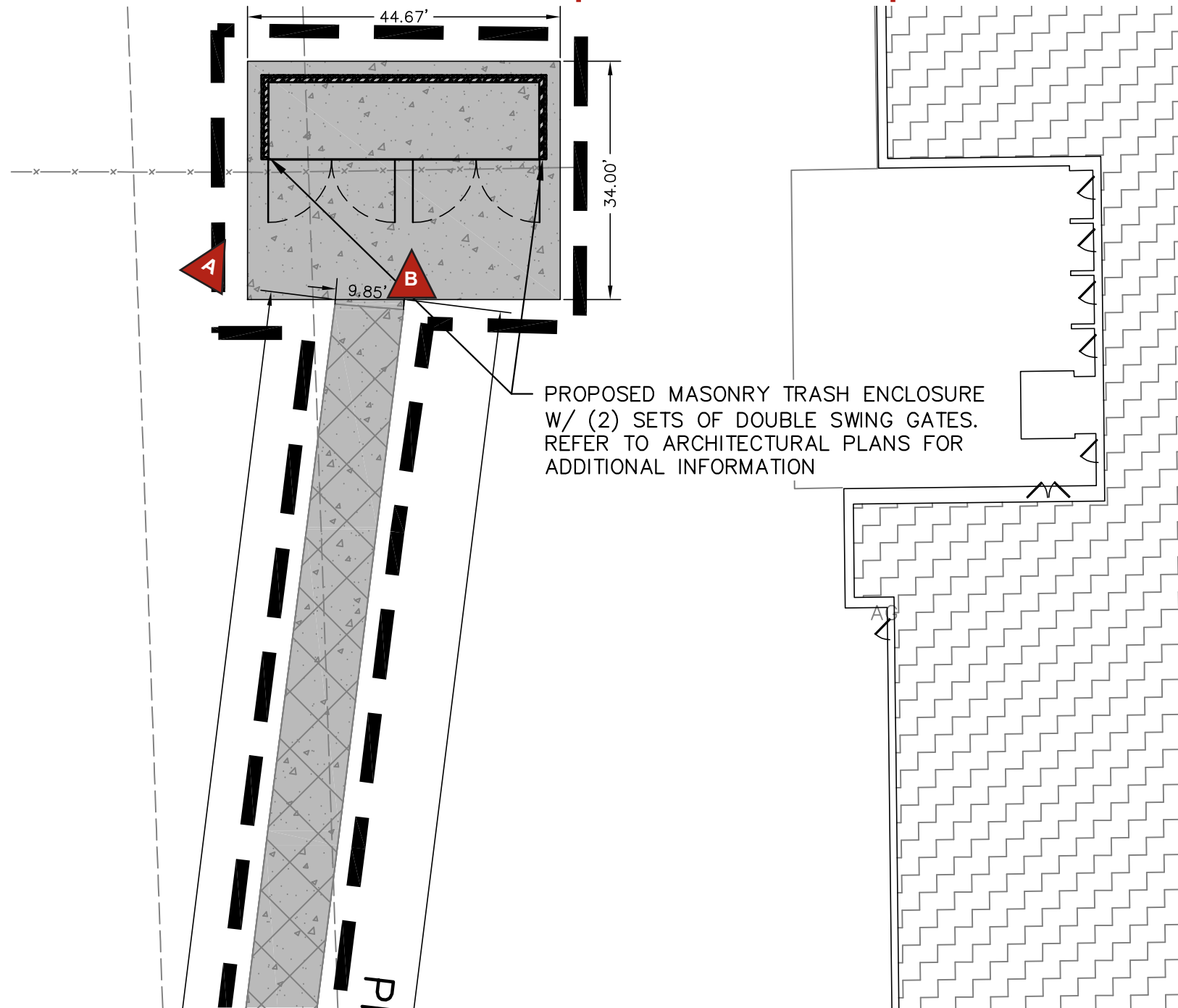


B

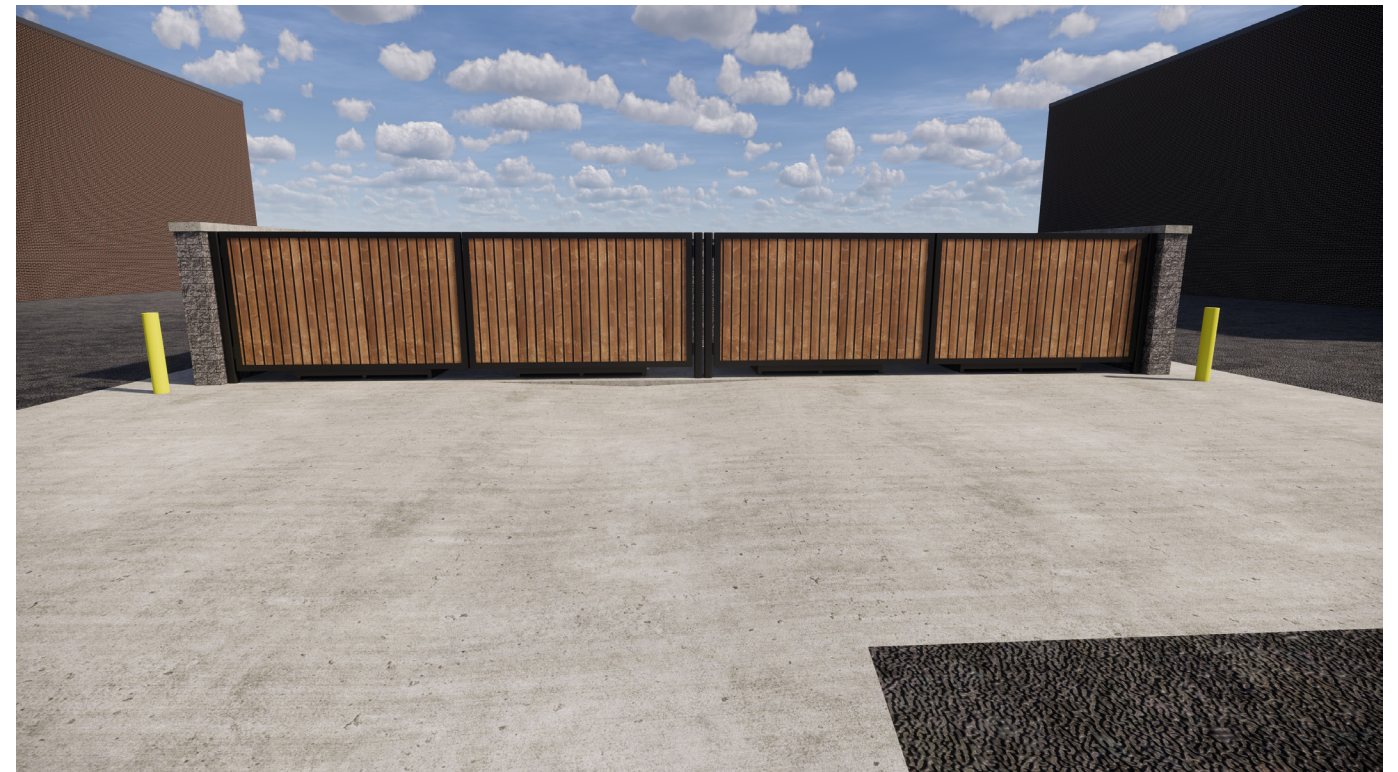
Butler Middle School Dumpster Enclosure:

East elevation is a brick masonry wall to match the addition; a new black vinyl-coated fence with privacy slats & access gate is being added to screen the adjacent mechanical equipment.

The School District of Waukesha requests that this dumpster enclosure IS NOT a condition of approval of the Horning Middle School project.



A

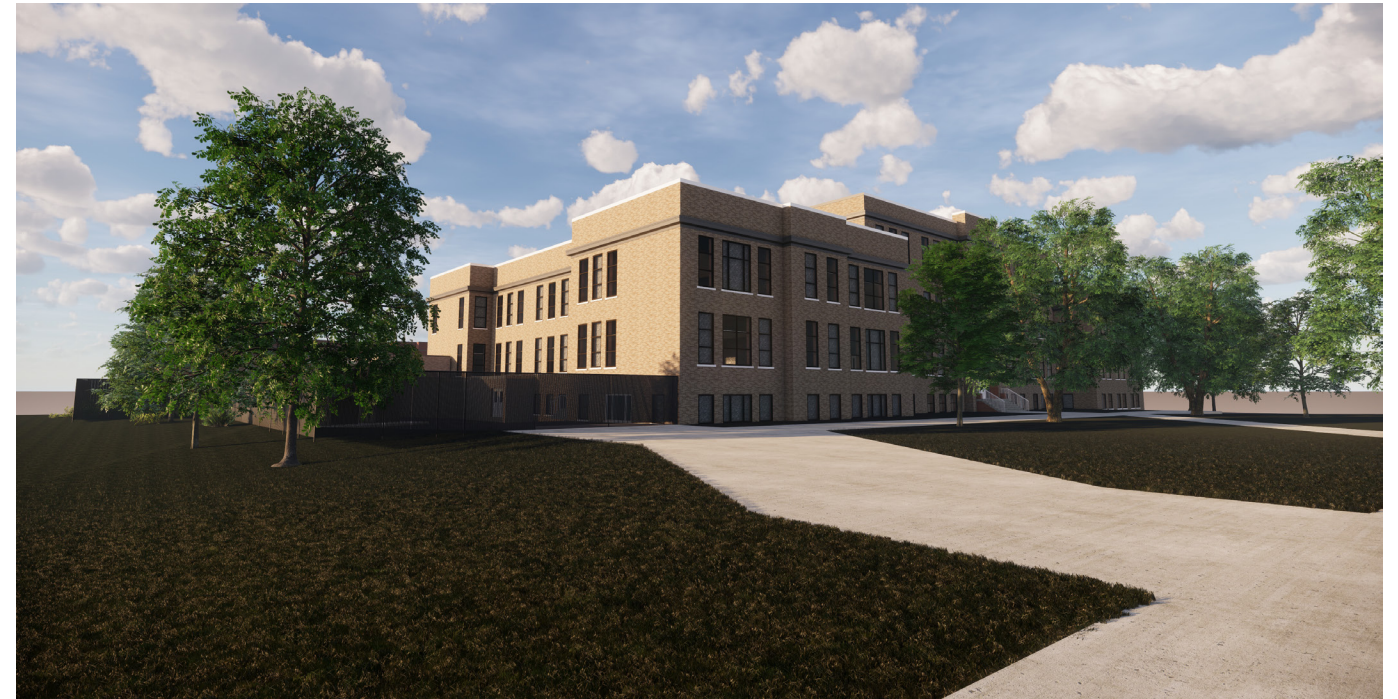
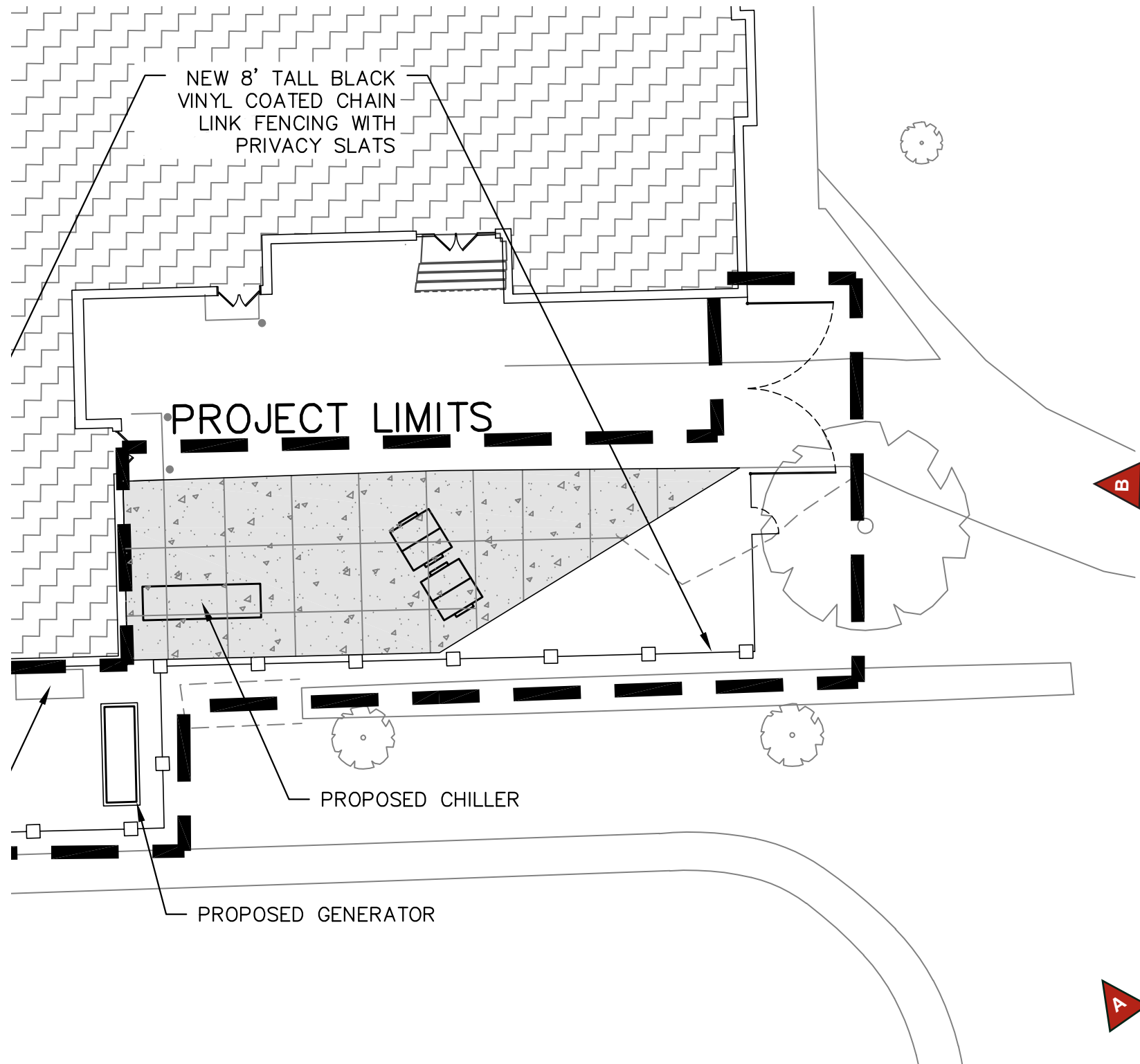


B

Horning Middle School Dumpster Enclosure:

All exterior construction work is at least 300 feet away and on different elevations from the existing dumpsters. We did not include anything for these dumpsters because we did not feel the scope of construction would trigger the requirement of adding a dumpster enclosure. Since the last plan commission meeting, we have put a design together for a shared dumpster enclosure for Horning and Banting (neighboring school) and will be receiving alternate bids on this. We would like the plan commission to allow the School District of Waukesha to make the decision on whether or not to build the enclosure rather than making it a requirement of this project. The district's decision would be based on how the overall bids come in compared to the available budget, along with the priority list for other projects. The dumpster enclosure design is now complete, so if the district chooses not to include it in the upcoming renovations, it will be on the docket for a future capital improvement plan.

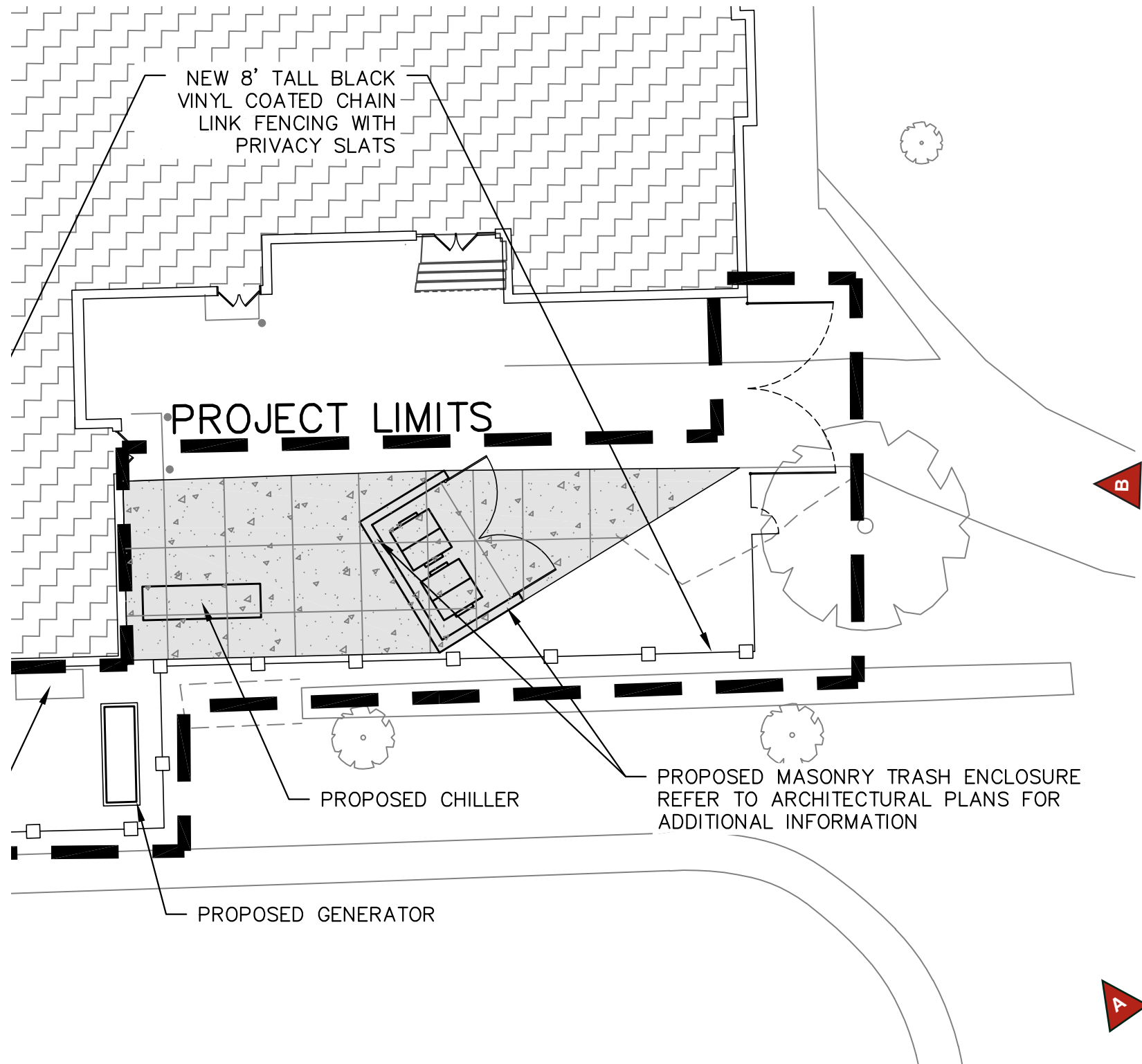
Option A (Desired Option) - The SDW request is to allow the existing fencing to be replaced & extended with black vinyl coated & vinyl slat fencing that will be used to keep people away from the ground-mounted mechanical equipment along with screening the dumpsters & mechanical equipment.



Les Paul Middle School Dumpster Enclosure:

The District's intention is to replace the existing chain link fence at this location; fully screening the entire area surrounding the dumpsters & all new & existing mechanical equipment. They plan to install a new 8' tall black vinyl coated fence with privacy slats and a gate to keep the area secure. Access to the dumpsters & any associated enclosure would be within this new screening fence, and therefore not visible from any other location.

Option B (Not Desired) - This option includes a masonry dumpster enclosure in addition to replacing & extending existing fencing with black vinyl coated & vinyl slat fencing to keep people away from the ground-mounted mechanical equipment along with screening the dumpsters & mechanical equipment.



Les Paul Middle School Dumpster Enclosure:

The District's intention is to replace the existing chain link fence at this location; fully screening the entire area surrounding the dumpsters & all new & existing mechanical equipment. They plan to install a new 8' tall black vinyl coated fence with privacy slats and a gate to keep the area secure. Access to the dumpsters & any associated enclosure would be within this new screening fence, and therefore not visible from any other location.