

FLOOR PLAN
SCALE: 1/8" = 1'-0"



Sto ARCHITECTURE, LLC
10020 WATTS ROAD
MADISON, WI 53593

PROPOSED MULTI-TENANT
BUILDING

120 E SUNSET DRIVE
WAUKESHA, WI
DECEMBER 19, 2019

SHEET:

A1.0 FLOOR PLAN



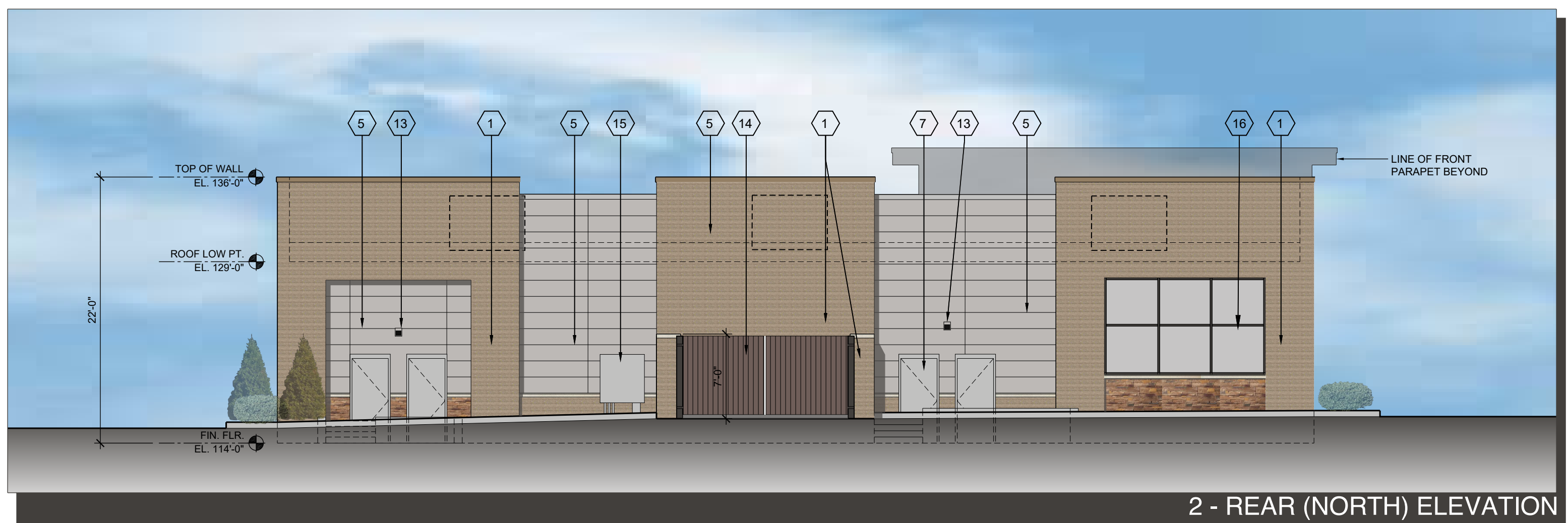
COLOR LANDSCAPE PLAN
SCALE: 3/32" = 1'-0"

- 1 UTILITY SIZE BRICK - HEBRON BRICK COMPANY, COLOR SEA GREY #6
 - 2 FIBER CEMENT LAP SIDING - COLOR - MOCHA
 - 3 ALUMINUM STORE FRONT & GLAZING SYSTEM - BLACK ANODIZED ALUMINUM w/ 1" LOW-E, CLEAR, INSULATED GLAZING
 - 4 METAL TRIM - COPING, COLOR CHARCOAL GREY
 - 5 STONEWOOD ARCHITECTURAL PANEL - 6"x26", COLOR FASHION GREY | 5619-CB
 - 6 METAL CANOPY/FASCIA, COLOR CHARCOAL GREY
 - 7 H.M. INSULATED DOOR, PAINT TO MATCH ADJACENT BUILDING MATERIAL
 - 8 PRECAST CONCRETE ACCENT BAND - COLOR LIMESTONE
 - 9 ROOF LINE & RTU BEYOND
 - 10 PRE-FINISHED METAL COPING & FASCIA - COLOR SIERRA TAN
 - 11 DRYVIT EXTERIOR INSULATION FINISH SYSTEM (E.I.F.S.) FINISH - SANDPEBBLE, COLOR - PURE CREAM
 - 12 CULTURED STONE, BOULDER CREEK STONE, LONG ISLAND STAK, WOODBRIDGE #56390-09
 - 13 EGRESS LIGHTING - LUMARK LED FIXTURE, CATALOG NO. XTOR4B-W, 38W4200L40K
 - 14 DUMPSTER ENCLOSURE GATE - 1x6 COMPOSITE WOOD BOARDS ON STEEL FRAME
 - 15 UTILITY CABINET - PAINT TO MATCH EXTERIOR DOOR COLOR AS ALLOWED BY UTILITY COMPANY
 - 16 ALUMINUM STORE FRONT & GLAZING SYSTEM - BLACK ANODIZED ALUMINUM w/ VICARON INSULATED SPANDREL PANELS - COLOR V175 HIGH OPACITY WHITE
1. BUILDING SIGNS SHOWN FOR REFERENCE ONLY. SIGNS TO BE SUBMITTED FOR SEPERATE REVIEW AND APPROVAL.
 2. LANDSCAPING SHOWN FOR SCALE AND GENERAL LOCATION OF BUILDING FOUNDATION PLANTINGS. REFER TO LANDSCAPE PLANS FOR SPECIFIC PLANT SPECIES.
 3. COLORS AND MATERIALS SHOWN REPRESENT ARCHITECT'S GRAPHIC REPRESENTATION OF FINISHES. REFER TO MATERIAL SAMPLE SUBMITTAL FOR ACTUAL COLORS AND FINISHES.

NOTES & MATERIALS



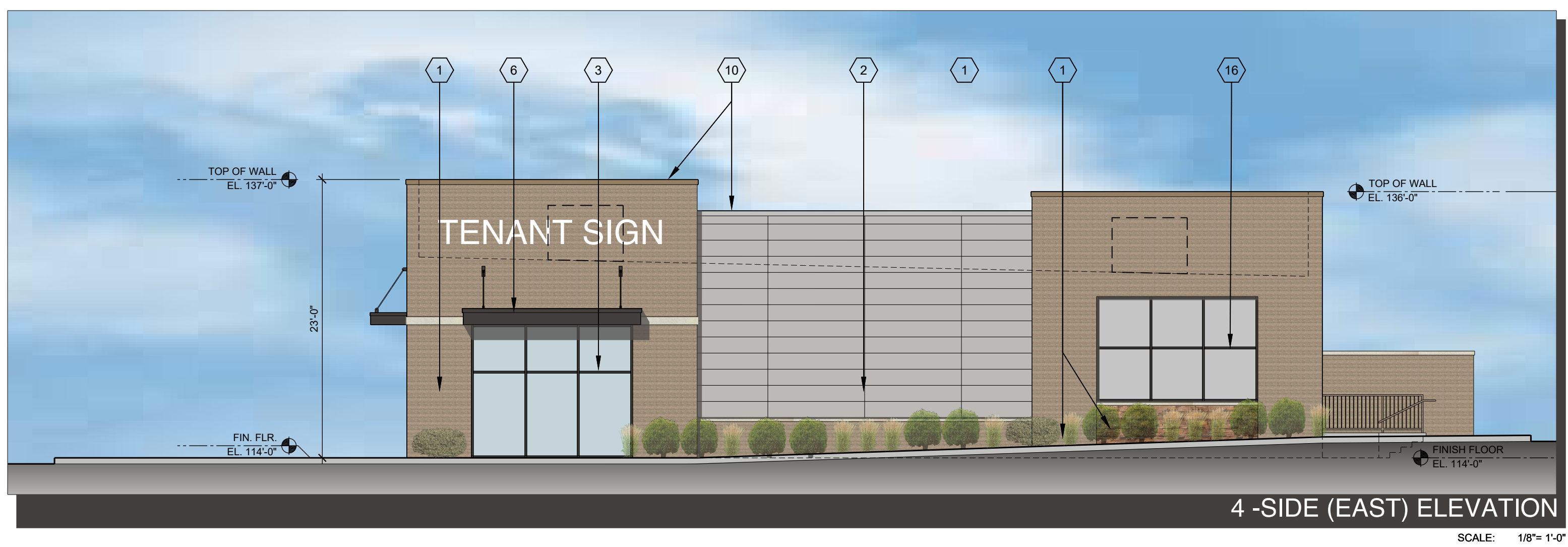
1 - FRONT (SOUTH) ELEVATION
SCALE: 1/8" = 1'-0"



2 - REAR (NORTH) ELEVATION
SCALE: 1/8" = 1'-0"



3 - SIDE (WEST) ELEVATION
SCALE: 1/8" = 1'-0"



4 - SIDE (EAST) ELEVATION
SCALE: 1/8" = 1'-0"



Sto ARCHITECTURE, LLC
10020 WATTS ROAD
MADISON, WI 53593

PROPOSED MULTI-TENANT BUILDING

120 E SUNSET DRIVE
WAUKESHA, WI
NOVEMBER 11, 2019

A2.0 EXTERIOR ELEVATIONS

SHEET:
REVISION:
REV. - 2 12-19-19 REVISED PER PLAN COMMISSION
JOB NO.:
1931