

# Southeastern Wisconsin **Regional Planning Commission**



## **Waukesha Area Transit Development Plan**

Common Council Meeting

December 20, 2022



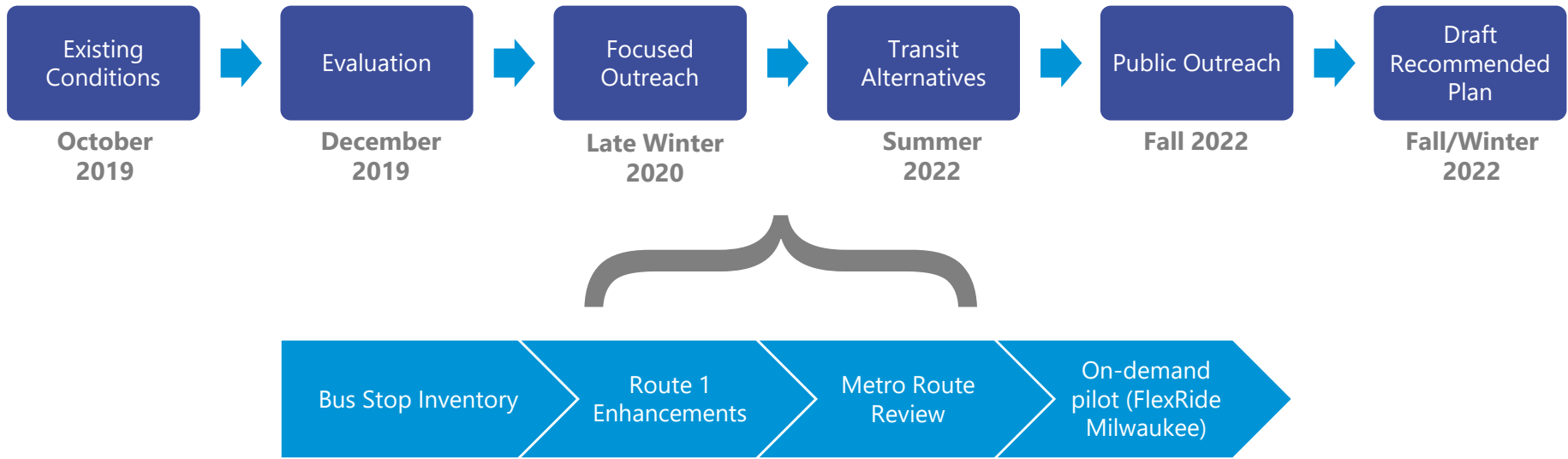
# Waukesha Area Transit Development Plan

- Requested by the City of Waukesha and Waukesha County
- Short-term (5-year) plan
- Last Transit Development Plans
  - City of Waukesha: 2012
  - Waukesha County: 2001
- Will help the City and County:
  - Respond to changes in development, employment, and demographics
  - Consider new and emerging mobility services
  - Address feedback from transit users, businesses, and higher education





# Transit Development Plan Process



# ●●●●● Waukesha Metro Evaluation Summary

- Overall Waukesha Metro performs very well
- Provides relatively good coverage of activity centers, population, and employment in the City of Waukesha
- Some routes have alignments with numerous turns to accommodate the street grid and hills
- The best performing route segments serve major commercial areas and downtown Waukesha
- Fulfills the service effectiveness and cost effectiveness performance standards
- Informed potential route adjustments



# ●●●●● Recommendations and Options

- The transit plan includes the list of recommendations and which entity(ies) would implement them
- Organized in three main sections or “elements”
  1. Fixed-Route Transit Service
  2. On-Demand Transportation Service
  3. Paratransit and Specialized Transportation Service





# Current Waukesha Metro Routes

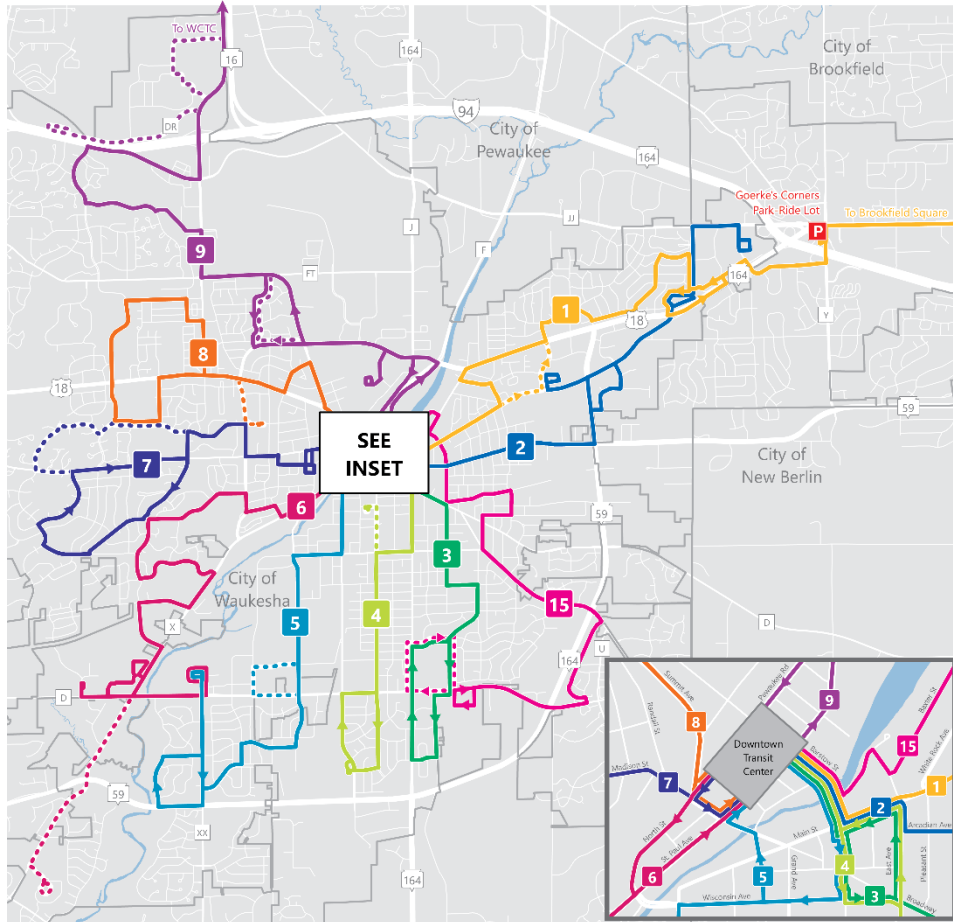


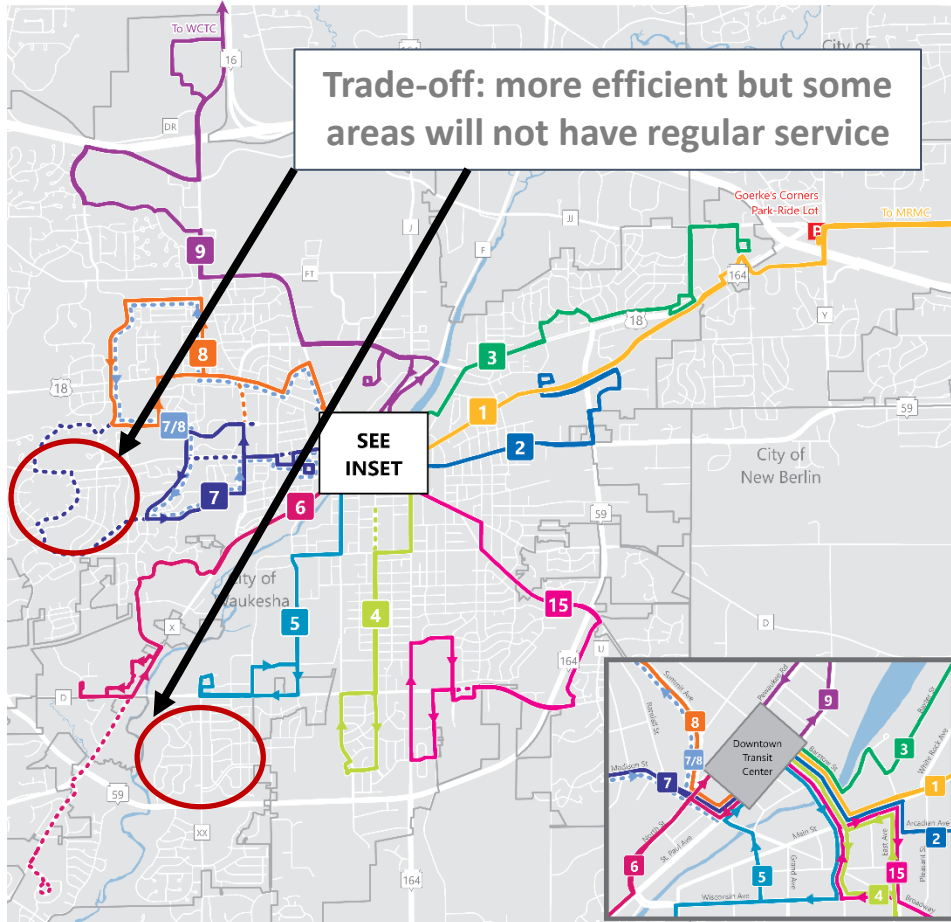
Image of existing Waukesha Metro Routes shown in Chapter 2

- Good coverage
- Some alignments with numerous turns due to street grid and hills
- Best performing segments serve major commercial areas and downtown Waukesha





# Restructured Waukesha Metro Routes



- Proposed changes in two phases: 2023 and 2024
- Straightening Route 1 and supplemental changes to nearby routes
- Reduces service hours and travel time
- Weekend route changes to serve major trip generators
- Future ridership will determine further changes



# On-Demand Transportation Element

- Employment-related on-demand transportation
- Replace poorly performing Waukesha Metro segments with on-demand
- Supplemental on-demand paratransit
- Connect to Waukesha County mobility hubs

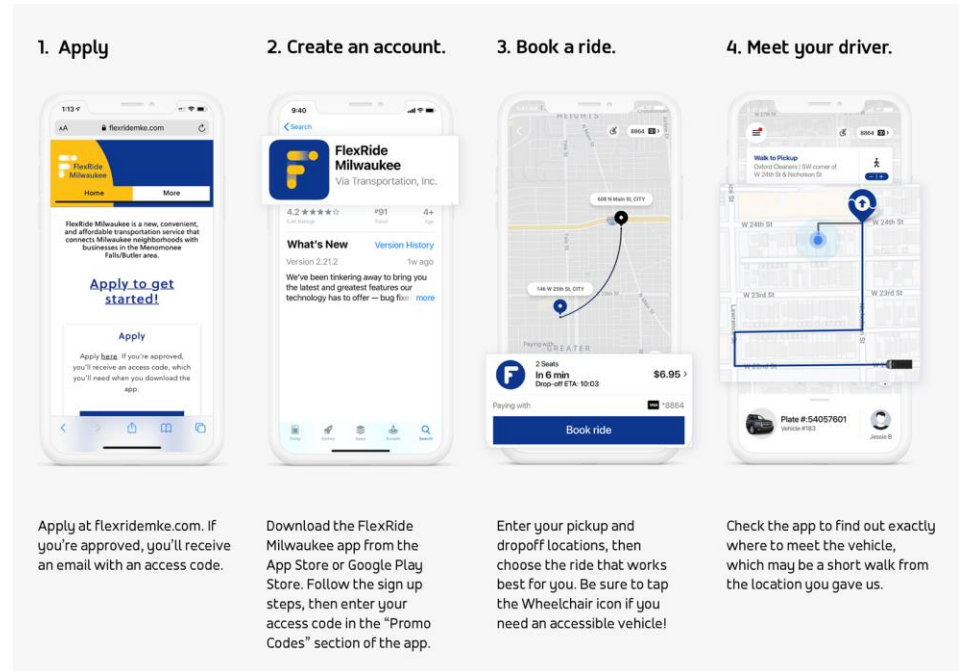


Image of FlexRide Milwaukee ride request app







## Paratransit & Specialized Transportation Element

- Recommends continued collaboration with the Aging and Disability Resource Center of Waukesha County
- Recommendation is consistent with the Waukesha County Specialized Transportation Program Review Study (August 2022)
  - Short-term – resume quarterly transportation coordination meetings
  - Medium-term – identify improvements (e.g., technology pilot or service standards)
- Identifies topics and steps to consider if paratransit service would be combined in the future
- Out of scope – County shared-ride taxi
  - Identifies service characteristics to consider if pursued in the future





# Various Outreach Methods

## WAUKESHA AREA TRANSIT DEVELOPMENT PLAN

Draft Transit Service Recommendations

**WHAT'S INSIDE**  
Existing Public Transit Services 2-4  
Performance Evaluation of Existing Transit Services 5  
Draft Transit Service Recommendations 6-15  
Public Meetings 16



At the request of the City and County of Waukesha, the Southeastern Wisconsin Regional Planning Commission (SEWRPC) is preparing a short-range transit development plan (TDP). The TDP includes both Waukesha Metro Transit and Waukesha County Transit and evaluated the current systems and analyzed potential transit service recommendations to meet the needs of the community. This newsletter summarizes the draft recommendations developed by the plan's Advisory Committee, with input from Waukesha County businesses, transit riders, educational institutions, and organizations serving individuals who use public transit. Your input will help shape how any future transit changes may be implemented. More information on ways you can share your thoughts on the draft recommendations are included at the back of this newsletter.

### What's Been Completed?

- Reviewed existing transit services
- Evaluated the performance of transit services offered by Waukesha Metro Transit and Waukesha County Transit
- Gathered input to help shape the draft transit service recommendations
- Developed and evaluated recommendations for Waukesha Metro Transit and Waukesha County Transit that address the performance evaluation and unmet transit service needs identified by the Advisory Committee and input from focused outreach

### What's Next?

- Obtain public input on the draft transit service recommendations
- Prepare a 5-year recommended transit service improvement plan for the City of Waukesha and Waukesha County
- The City of Waukesha Common Council and Waukesha County Board of Supervisors may consider implementing some or all of the recommended transit service improvement plan

### Advisory Committee for the Waukesha Area Transit Development Plan

To provide guidance on the technical staff during the preparation of this plan, and to involve concerned and affected public officials and citizen leaders in the development of transit service policies and improvement proposals, an Advisory Committee was appointed by the Waukesha County Director of Public Works and the City of Waukesha Director of Public Works. The Advisory Committee is responsible for proposing to Waukesha County, the City of Waukesha's Transit Commission, and SEWRPC after careful study and evaluation a plan detailing the recommended transit service improvements for the Waukesha Area over the planning timeframe. A list of Advisory Committee members can be found at: [www.sewrpc.org/WaukeshaTransit](http://www.sewrpc.org/WaukeshaTransit)

Newsletter October 2022

The Freeman - 10/22/2022

## SEWRPC looking for feedback on public transit

**WAUKESHA** — The Southeastern Wisconsin Regional Planning Commission (SEWRPC) is planning the future of Waukesha's public transportation. Three meetings will be held this week for residents to give their feedback on draft recommendations. The recommendations, for both the Waukesha Metro Transit System and the Waukesha County Transit System, include fixed-route, on-demand, and paratransit recommendations. Meetings will be held on **Tuesday from 3 to 6 p.m.** at the Downtown Transit Center Main Lobby, 212 E. St. Paul Ave., on **Wednesday from 4:40 to 6:30 p.m.** virtually, and **Thursday from 3 to 6 p.m.** in the Waukesha South High School Cafeteria, 401 E. Roberta Ave. The recommendations are designed to improve the performance of the transit systems based on evaluation of the public

transit and comments from the Advisory Committee, county businesses, transit riders, nonprofit organizations that use transit, students and parents in the School District of Waukesha, and the public, a flyer from SEWRPC says. For fixed-route transit service, SEWRPC has 12 recommendations, which include restructuring metro routes, combining routes, changing frequency on routes and considering changes to fare policy. The commission is also recommending employment-related on-demand transportation solutions. The public can also submit written feedback to P.O. Box 1607, Waukesha, WI 53187 or to [waukeshatdp@sewrpc.org](mailto:waukeshatdp@sewrpc.org). To register for the virtual meeting or to submit online feedback, visit [www.sewrpc.org/WaukeshaTransit](http://www.sewrpc.org/WaukeshaTransit). Feedback will be accepted through Nov. 11.

SEWRPC - Transportation - Transit Development Plans - Waukesha Area

### Waukesha Area Transit Development Plan

**Upcoming Public Information Meetings**

Please join us to provide feedback on [draft recommendations](#) for Waukesha Metro and Waukesha County Transit services. The feedback received from the public will help Waukesha County and Waukesha Metro Transit determine which transit system recommendations they should pursue over the next five years.

**Public Information Meetings**

<b>Tuesday, October 25, 2022</b> 4:00 p.m. - 6:00 p.m. Downtown Transit Center Main Lobby 212 E. St. Paul Avenue   Waukesha, WI 53188
<b>Wednesday, October 26, 2022</b> 4:30 p.m. - 7:30 p.m. Virtual Meeting <a href="#">VIEW THE RECORDING HERE.</a>
<b>Thursday, October 27, 2022</b> 8:30 p.m. - 10:00 p.m. Waukesha South High School Cafeteria 401 E. Roberta Avenue   Waukesha, WI 53188 Served by routes 3 and 15

Comments on the draft plan are due by Friday, November 11, 2022, and can be provided by using the [public comment form](#). How can we give you your written comments by email, telephone, fax, or via U.S. mail using the contact information listed below:

Email: [waukeshatdp@sewrpc.org](mailto:waukeshatdp@sewrpc.org)  
Telephone: (262) 547-6721  
Fax: (262) 547-1100

## PLAN DE DESARROLLO DEL TRÁNSITO EN WAUKESHA

Reuniones de Participación Pública sobre el Proyecto de Recomendaciones del Servicio de Tránsito

### ¡COMPARTA SU OPINIÓN!

Estamos planeando el futuro de los sistemas de transporte de Waukesha y necesitamos su opinión. Por favor, únase a nosotros para dar su opinión sobre el proyecto de recomendaciones y si satisfacen sus necesidades de transporte.

**Martes, Octubre 25, 2022**  
3:00 p.m. - 6:00 p.m.  
Cafetería principal del Centro de Tránsito del Centro de la Ciudad  
212 E. St. Paul Avenue | Waukesha, WI 53188

**Miércoles, Octubre 26, 2022**  
4:00 p.m. - 7:30 p.m.  
Reunión Virtual  
Regístrate en nuestro sitio web en [www.sewrpc.org/WaukeshaTransit](http://www.sewrpc.org/WaukeshaTransit)

**Jueves, Octubre 27, 2022**  
3:00 p.m. - 6:00 p.m.  
Cafetería escolar secundaria Waukesha South  
401 E. Roberta Avenue | Waukesha, WI 53188  
Servado por las rutas 3 y 15

**¿No puede asistir a una reunión pública?**

Por favor, comparta sus comentarios a través de nuestra encuesta

- Aportaciones locales:**
- ¿El proyecto de recomendaciones de tránsito satisface sus necesidades de transporte?
  - ¿Qué recomendaciones deben seguirse?

- Las reuniones tendrán un formato de "casa abierta", lo que le permitirá asistir en cualquier momento de cada reunión. Es necesario registrarse para la reunión virtual. Se aceptarán comentarios por escrito hasta el **viernes 11 de noviembre de 2022**, que podrán enviarse en la reunión o por correo postal, sitio web, correo electrónico o fax.
- Correo: P.O. Box 1607, Waukesha, WI, 53187-1607
  - Sitio Web: [www.sewrpc.org/WaukeshaTransit](http://www.sewrpc.org/WaukeshaTransit)
  - Correo Electrónico: [waukeshatdp@sewrpc.org](mailto:waukeshatdp@sewrpc.org)
  - Fax: (262) 547-1103

Todos los comentarios enviados antes del **viernes 11 de noviembre de 2022** se tendrán en cuenta a la hora de elaborar un Plan de Desarrollo de Tránsito del Área de Waukesha final recomendado.

Los lugares de reunión son accesibles para sillas de ruedas. Se pide a las personas que necesitan servicios adicionales con la discapacidad que se pongan en contacto con el sistema de SEWRPC a (262) 547-6721 por correo electrónico antes de las reuniones para que se puedan hacer los arreglos apropiados en relación con el acceso a la accesibilidad de reuniones e interpretación de los intérpretes. La participación activa es la preferencia de los comentarios.



### SHARE YOUR FEEDBACK!

Share your feedback on the draft public transit recommendations for Waukesha Metro Transit and Waukesha County Transit.

Key input we need:

- Do the draft transit recommendations meet your company's transportation needs?
- Which recommendations should be pursued?

**Date:** Wednesday, November 9, 2022  
**Time:** 1:00 p.m. - 3:00 p.m.  
**Location:** Waukesha County Resource Alliance - 717 N. Grandview Boulevard | Waukesha, WI 53188

At the request of Waukesha County and the City of Waukesha, SEWRPC is preparing a 5-year transit plan. Draft recommendations have been prepared and your input will help inform how the final plan is implemented. Draft recommendations we plan to discuss include:

- Waukesha Metro route changes
- Transit enhancements along the Bluemound Road corridor
- Employment related on-demand transportation

### Waukesha Area Transit Draft Recommendations Survey

At the request of the City and County of Waukesha, the Southeastern Wisconsin Regional Planning Commission (SEWRPC) is preparing a short-range transit plan (TDP). Please provide feedback on the draft recommendations and whether they meet your transportation needs.

More information about this advisory plan is available on the study website at [sewrpc.org/WaukeshaTransit](http://sewrpc.org/WaukeshaTransit). Please click [here](#) to view a summary of the draft recommendations.

Questions marked with a \* are required.

Para **español**, haga clic aquí.

Zip code\*

Name

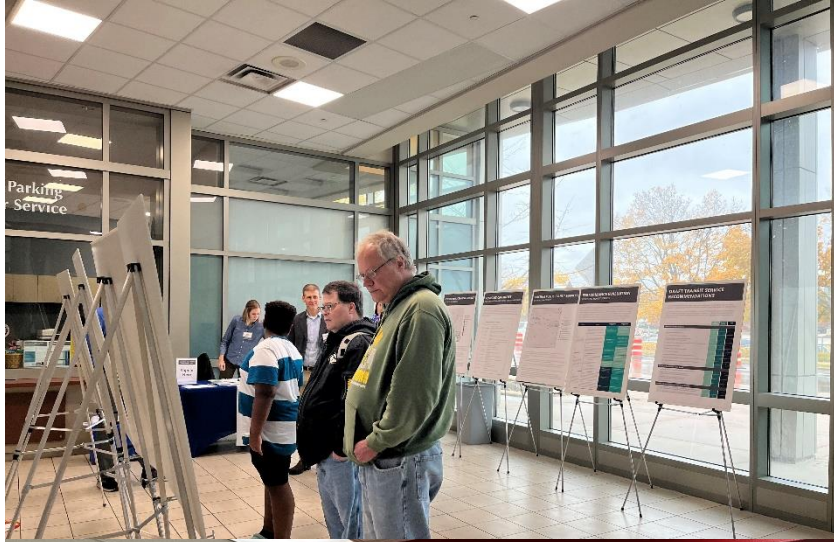
Address or nearest intersection

Do you currently use any of the following:

- Waukesha Metro Transit
- Waukesha County Commuter Routes (901, 904, 905)
- Milwaukee County Transit System
- Waukesha MetroLight
- Waukesha County paratransit
- RideLine or Shared-Fare Taxi Program through the Aging and Disability Resource Center of Waukesha County



# Public Information Meetings



Overall support for restructured Waukesha Metro Routes

Request for longer service hours and greater frequency – especially on Route 1 and extensions

Support for on-demand options to improve access

Overall support for paratransit and specialized transportation

- “I would love it if the transit system could incorporate after school activities (West High School) in the bus schedule”
- “Right now there is insufficient transportation for those partaking in 2<sup>nd</sup> and 3<sup>rd</sup> shift jobs”
- “As long as [on-demand] saves money”
- “Keeping access to services and shops for the elderly and disabled should be a priority”



Transit Service Recommendations for Consideration	City of Waukesha	Waukesha County	Both
Implement Transit Enhancements on Metro Route 1			X
Restructure Waukesha Metro Routes	X		
Combine Routes 904 and 905 to Goerke's Corners and the City of Delafield		X	
Reduce Frequency on Route 901		X	
Implement an Enhanced Fare Payment System			X
Consider Fare Policy Changes			X
Implement Prioritized Improvements to Waukesha Metro Bus Stops	X		
Continue Exploring Alternative Bus Propulsion Systems and Sizes for Future Purchases	X		
Pursue Coordinated Transportation Solutions with Regional Transit Operators			X
Develop an Enhanced Marketing and Travel Training Program			X
Implement Employment-related On-demand Transportation Solutions			X
Replace poorly performing Waukesha Metro segments or times of day with on-demand transportation services	X		
Develop Supplemental On-Demand Paratransit and Non-Emergency Medical Transportation Options			X
Develop Mobility Hubs			X
Continue collaboration between the ADRC of Waukesha County, Waukesha Metro, and Waukesha County Transit on paratransit and specialized transportation services			X
Provide County-wide shared-ride taxi service		X	

# Thank You

**Jennifer Sarnecki** | Transportation Planner

jsarnecki@sewrpc.org | 262.953.3202

SEWRPC.org



/SEWRPC



@SEW\_RPC