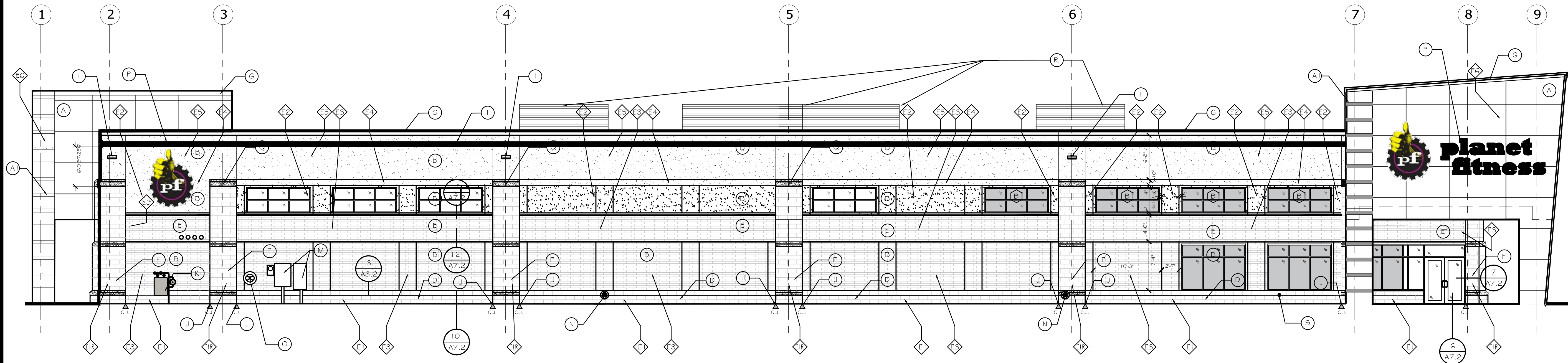


© 2019  
This print is the  
sole property of  
RMA Architects, Inc.  
Any reproduction,  
copying, or use is  
strictly prohibited  
without written  
permission.

**RMA**  
ARCHITECTS  
1050 SOUTH GRIDER STREET  
APPLETON, WISCONSIN 54914  
PHONE: 920-364-9850



**LEFT/NORTH ELEVATION** 2  
SCALE: 1/8" = 1'-0"  
SEE SHEET A3.3 FOR EXTERIOR WALL TYPES

**PLAN/MATERIALS LEGEND**

- (A) ALUMINUM COMPOSITE PANELS (ACM), MANUFACTURER: ALUCOBOND, COLOR: ANODIZED CLEAR, TYPE TO BE - RAINSCREEN SYSTEM 1 - INSTALL DIRECTLY OVER WEATHER BARRIER SYSTEM ON 3/4" FIRE TREATED PLYWOOD.
- (A1) ACCENT BAND - ALUMINUM COMPOSITE PANELS (ACM), MANUFACTURER: ALUCOBOND, COLOR: ANODIZED BLACK, TYPE TO BE - RAINSCREEN SYSTEM 1 - INSTALL DIRECTLY OVER WEATHER BARRIER SYSTEM ON 3/4" FIRE TREATED PLYWOOD.
- (B) EXTERIOR INSULATION FINISH SYSTEM, (EIFS): EQUAL TO 'DRYVIT', FINISH TO BE "SANDBLAST", COLOR: E1, E1R, E2, E4, E5 - SAME - #132 - MOUNTAIN FOG.
- (C) ALUMINUM WINDOWS/STOREFRONT DOOR ASSEMBLY, MANUFACTURER: KAWNEER, SYSTEM - TRIFAB VERSAGLAZE - 451T WITH CENTER GLAZING, COLOR: BLACK ANODIZED #29.
- (D) CMU DECORATIVE BLOCK KNEE WALL, MANUFACTURER: COUNTY MATERIALS - "HERITAGE" COLLECTION, SIZE: FULL BED VENEER, 15 5/8" X 7 5/8" EQUAL TO; COLOR: ASH BLEND; MORTAR COLOR: STANDARD GRAY; MUST SEAL CONCRETE BRICK.
- (E) THIN BRICK VENEER, MANUFACTURER: GLEN-GERY, SIZE: MODULAR - THIN BRICK = 1/2" X 2 1/4" X 7 5/8", COLOR: 'RUSTIC BURGUNDY THIN BRICK'; MORTAR COLOR: STANDARD GRAY.
- (F) CMU PILASTER, SAME AS ITEM "D", CMU DECORATIVE KNEE WALL.
- (G) PREFINISHED METAL COPING, MANUF.: METAL-ERA COLOR: MATTE BLACK.
- (H) EGRESS LIGHT.
- (I) EXTERIOR DECORATIVE LIGHTING.
- (J) CONTROL JOINT, PROVIDE AS SHOWN IN MASONRY WITH BACKER ROD AND SEALANT, CAULK COLOR: TO MATCH ADJACENT SURFACES.
- (K) GAS METER, PAINT METER AND ASSOCIATED PIPING TO MATCH WALL COLOR.
- (L) WATER SERVICE.
- (M) ELECTRIC SERVICE.
- (N) STORM CONNECTION FOR ROOF DRAIN AND OVERFLOW - "LAMB'S TONGUE".
- (O) FIRE DEPARTMENT CONNECTION FOR THE SPRINKLER SYSTEM.
- (P) EXTERIOR SIGNAGE & ELEC. REQUIREMENTS BY OTHERS.
- (Q) 12" LIMESTONE @ TOP OF PILASTER(S), COLOR: STANDARD LIMESTONE - SHAPE PER DRAWINGS.
- (R) ROOF TOP UNIT & SCREEN, COLOR: TO MATCH COPING - MATTE BLACK.
- (S) HOSE BIBB, FROST PROOF - REFER TO PLUMBING DRAWINGS FOR MORE INFORMATION.
- (T) 8" ACCENT BAND IN EIFS - COLOR TO BE YELLOW TO MATCH LOGO
- (\*) SEE SHEET A7.1 FOR WINDOW INFORMATION

**BUILD-OUT FOR:**  
**PLANET FITNESS - WAUKESHA**  
LOT 1 - EAST MAIN STREET  
WAUKESHA, WI 53186

**REVISIONS**

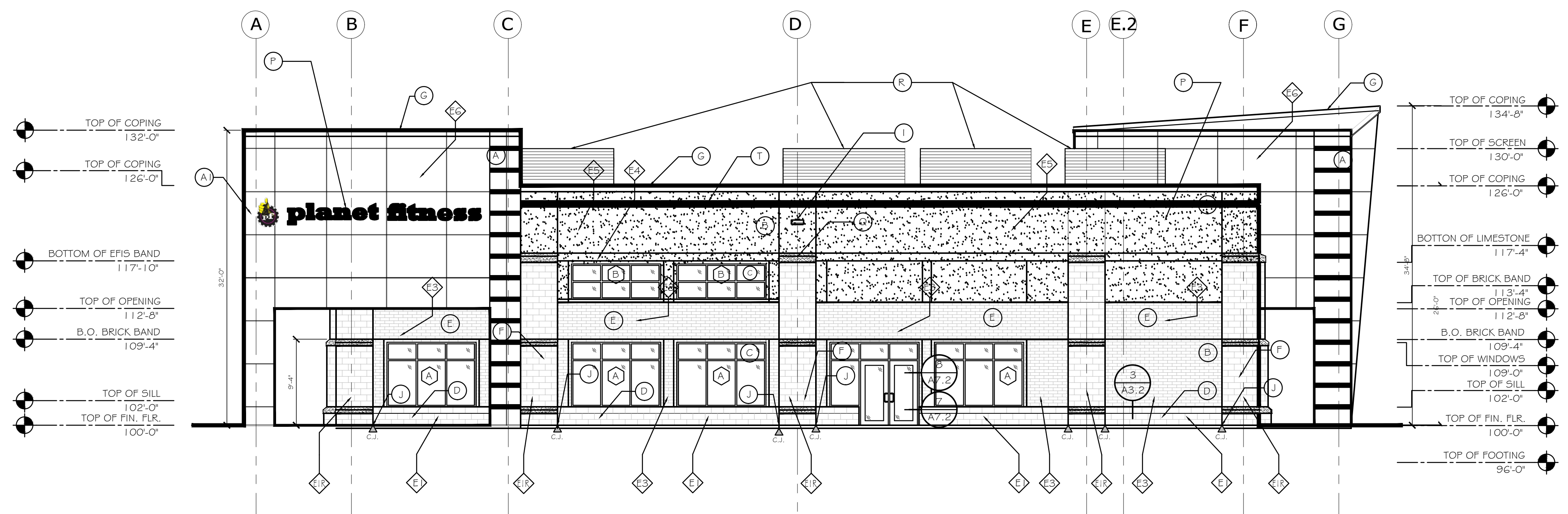
**DRAWN BY**  
TPH  
**CHECKED BY**  
TFM

**DATE**  
04/04/19

**PROJECT NO.**  
175060

**A3.2R**

**PRELIMINARY**  
NOT FOR CONSTRUCTION



**FACING ACCESS ROAD TO WOODMANS**

**BACK/EAST ELEVATION** 1  
SCALE: 1/8" = 1'-0"  
SEE SHEET A3.3 FOR EXTERIOR WALL TYPES

- TOP OF COPING 134'-8"
- TOP OF COPING 130'-0"
- TOP OF COPING 126'-0"
- BOTTOM OF EIFS BAND 117'-10"
- TOP OF OPENING 112'-8"
- B.O. BRICK BAND 109'-4"
- TOP OF SILL 102'-0"
- TOP OF FIN. FLR. 100'-0"

- TOP OF COPING 134'-8"
- TOP OF SCREEN 130'-0"
- TOP OF COPING 126'-0"
- BOTTOM OF LIMESTONE 117'-4"
- TOP OF BRICK BAND 113'-4"
- TOP OF OPENING 112'-8"
- B.O. BRICK BAND 109'-4"
- TOP OF WINDOWS 109'-0"
- TOP OF SILL 102'-0"
- TOP OF FIN. FLR. 100'-0"
- TOP OF FOOTING 96'-0"