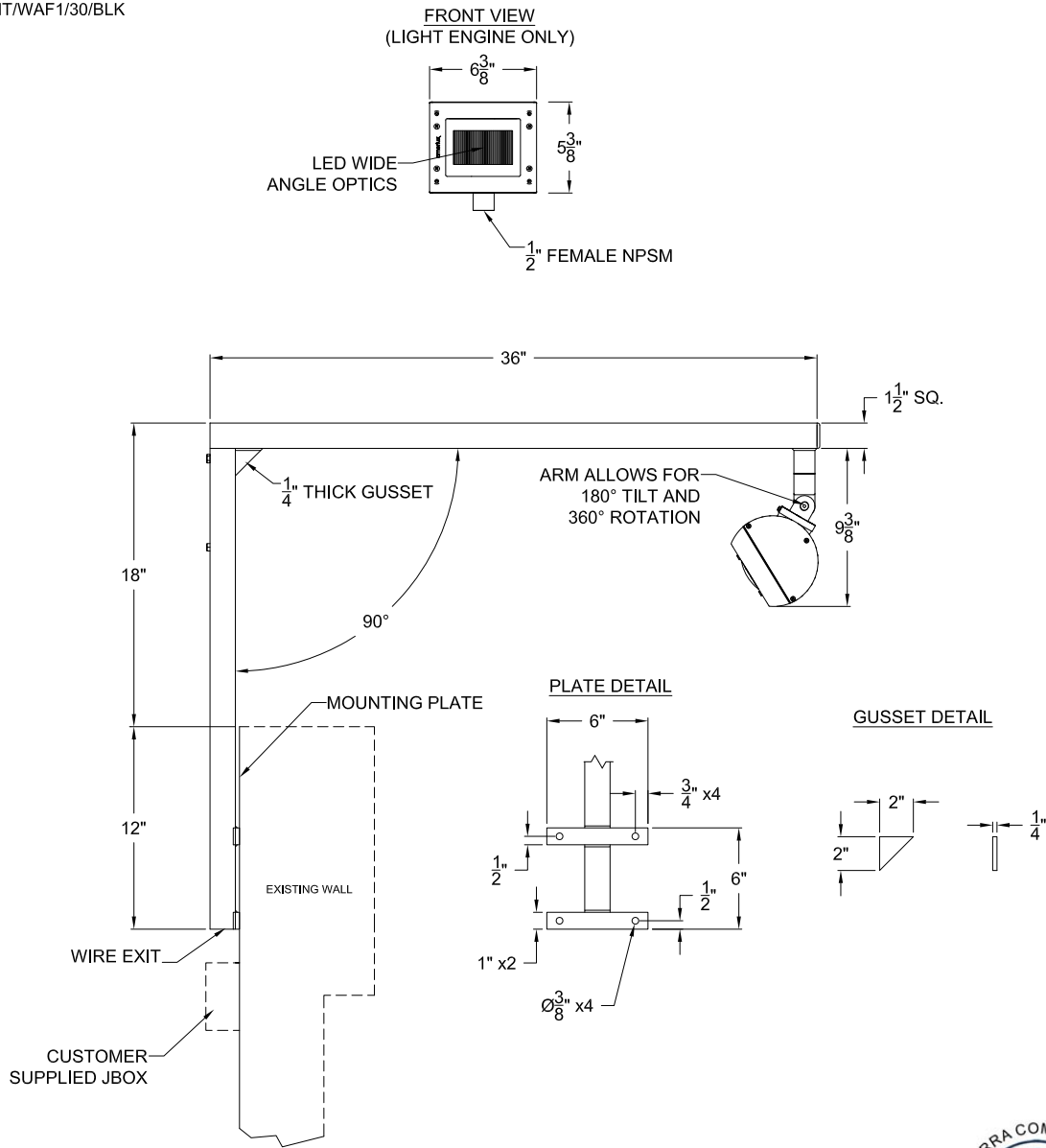



WAF1.5/BLDG MNT/WAF1/30/BLK



Approved By _____ Date _____

NOTICE: THIS DRAWING IS FOR REFERENCE ONLY. CHECK FOR LATEST REVISION PRIOR TO ORDERING. THIS DRAWING SHOULD ACCOMPANY YOUR ORDER. THANK YOU



DATE 11/19/2015		PART STRING WAF1.5/BLDG MNT/WAF1/30/BLK		FILE NAME KFC_35083.dwg	
QUOTE #/ SO # 35083				NOTES	
JOB NAME: KFC					
www.amerluxexterior.com 5220 SHANK ROAD PEARLAND, TX. 77581 PHONE:(281)997-5400 FAX:(281) 997-5441 TOLL FREE: (800) 364-0098		LIGHT SOURCE ● LED	VOLTAGE ● 120-277V	DRAWN BY HT	
		FINISH ● BLK SMOOTH ● SATIN BLACK		REVISION 2	
				GENERAL: EXTERIOR HARDWARE WILL BE STAINLESS STEEL. ELECTRICAL COMPONENTS WILL BE ETL LISTED "SUITABLE FOR WET LOCATIONS."	



Client: YUM BRANDS		Lamp Manufacturer: N/A
Fixture Manufacturer: AMERLUX		
Cat#: WAF1/BLDG MNT/WAF/30/BLK		Cat#: N/A
Capitol Light is not responsible for inaccuracies in manufacturers published specifications		

Type
E1