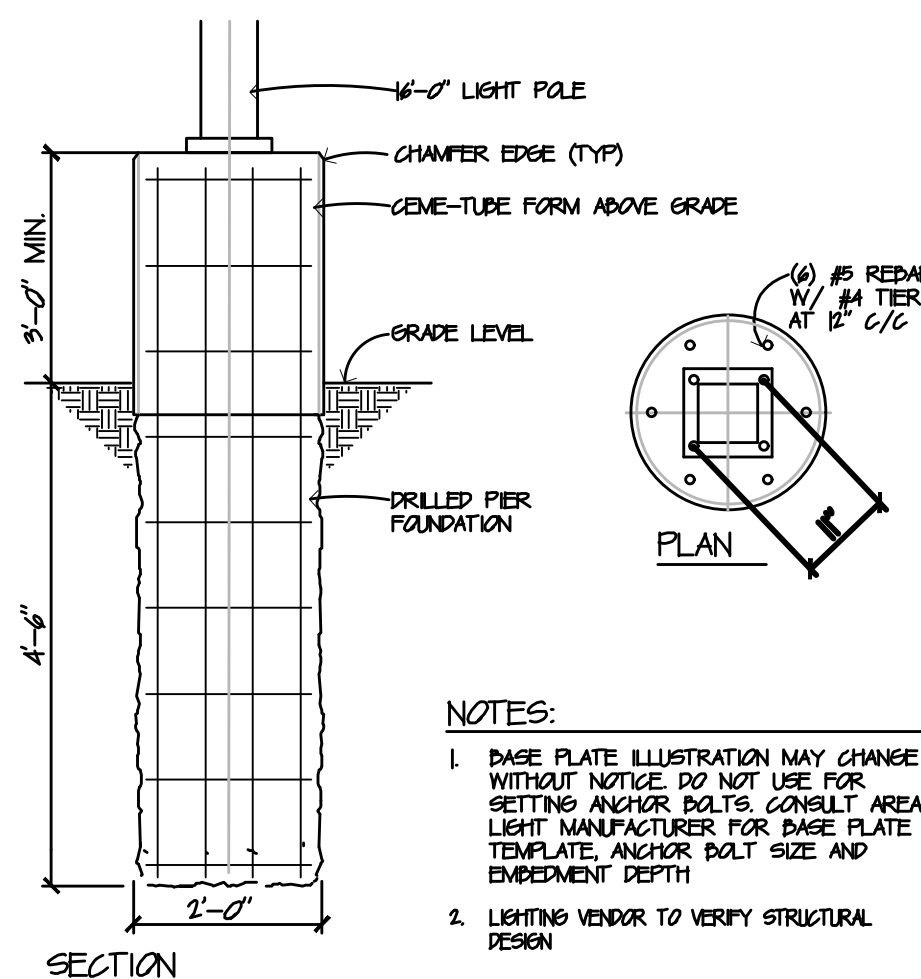


- NOTES:
- 3500 PSI CONCRETE SHALL BE USED IN CONSTRUCTION OF THE CURB & GUTTER.
 - THE CONTRACTOR IS RESPONSIBLE FOR DETERMINING THE SLOPE OF THE GUTTER PAN.
 - FOR DEPRESSED CURB HEAD SLOPE, USE THE SAME SLOPE AS ADJACENT SIDEWALK.
 - THE BOTTOM OF THE CURB AND GUTTER MAY BE CONSTRUCTED EITHER LEVEL OR PARALLEL TO THE SLOPE OF THE SUBGRADE OR BASE AGGREGATE PROVIDE MINIMUM 6" GUTTER THICKNESS MAINTAINED. TRANSVERSE CONTRACTION JOINTS SHALL BE CUT OR SAWED AT MAXIMUM 20 FOOT INTERVALS.
 - 1/2" PREFORMED EXPANSION JOINT FILLER SHALL BE PLACED TRANSVERSELY IN THE CURB ABUTTING EXISTING CURB AND SIDEWALK, WALLS OR BUILDINGS, AND AT INTERVALS NOT TO EXCEED 300 FEET, WITH PREFERRED LOCATIONS BEING AT RADIUS POINTS OR ANGLE POINTS.

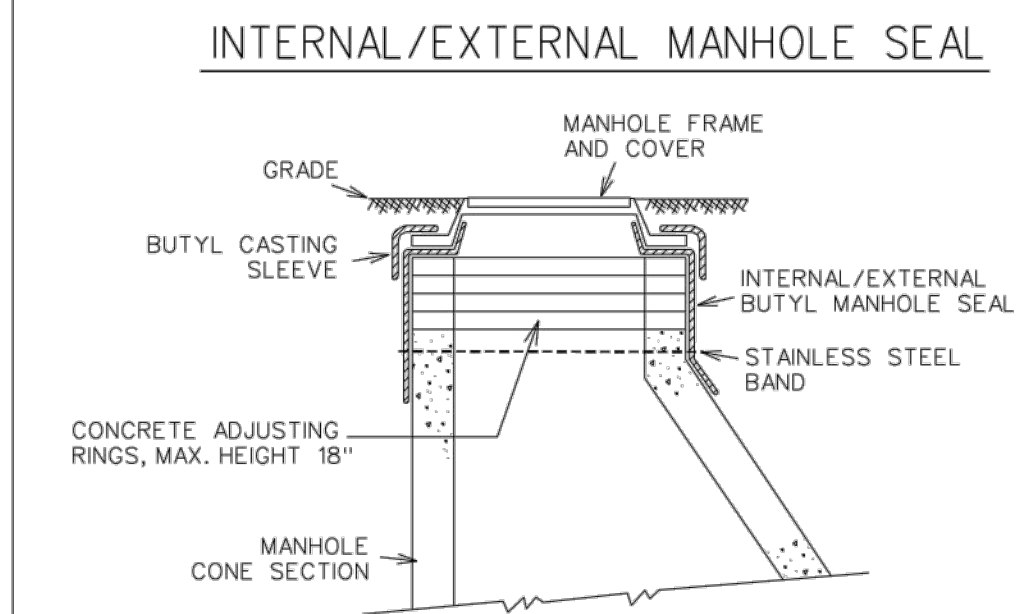
CONCRETE CURB & GUTTER DETAIL

1 | CONCRETE CURB & GUTTER DETAIL
SP5 | SCALE - N.T.S.



- NOTES:
- BASE PLATE ILLUSTRATION MAY CHANGE WITHOUT NOTICE. DO NOT USE FOR SETTING ANCHOR BOLTS. CONSULT AREA LIGHT MANUFACTURER FOR BASE PLATE TEMPLATE, ANCHOR BOLT SIZE AND EMBEDMENT DEPTH.
 - LIGHTING VENDOR TO VERIFY STRUCTURAL DESIGN.

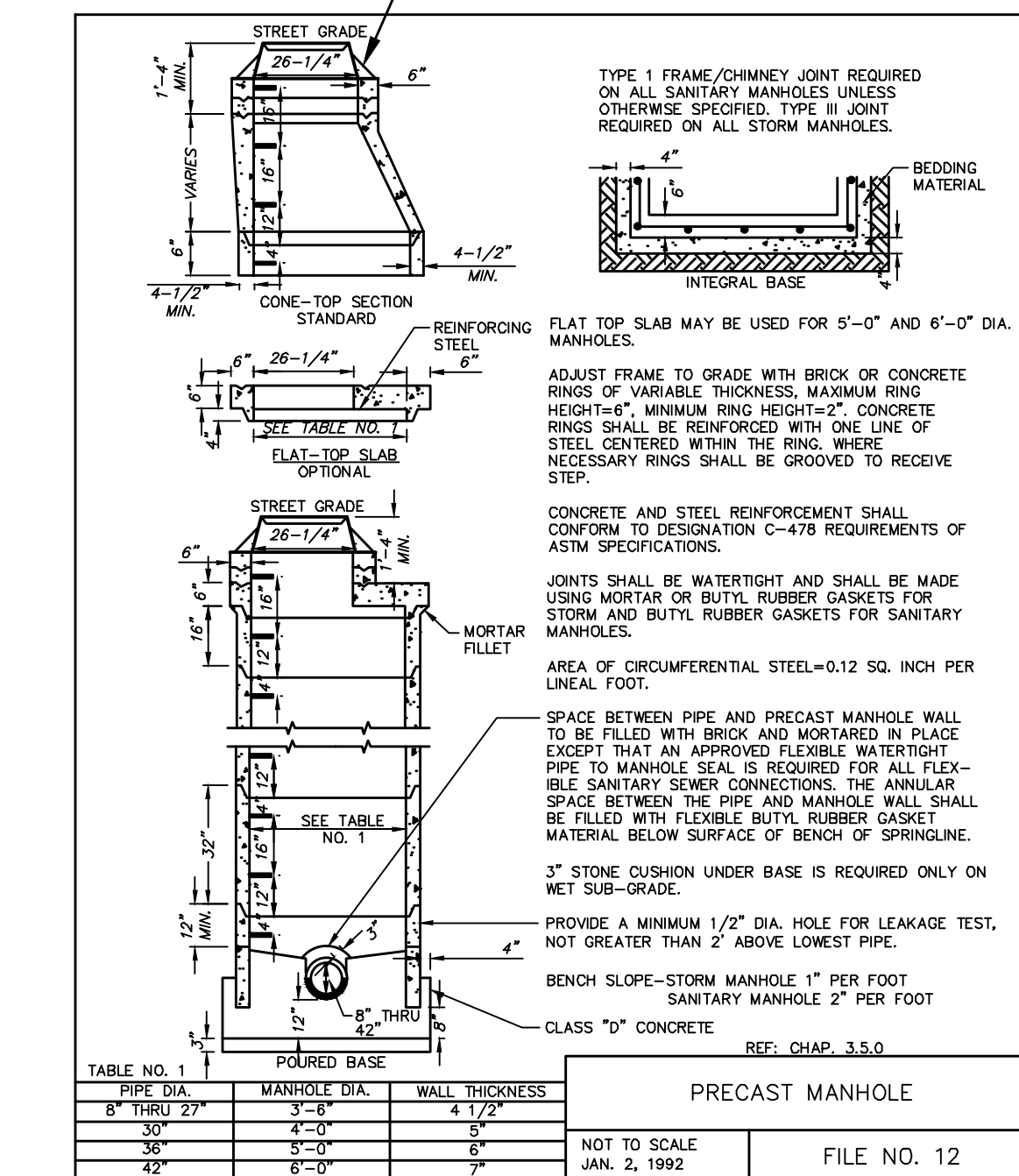
10 | ROUND AREALIGHT FOUNDATION
SP5 | SCALE - 1/2"=1'-0"



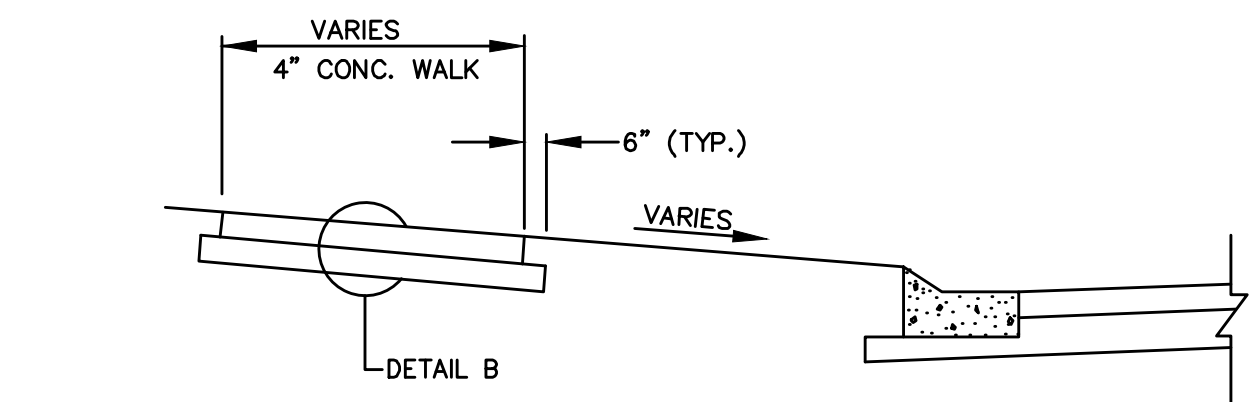
- NOTES:
- INTERNAL/EXTERNAL MANHOLE SEAL BY ADAPTOR INC., OR APPROVED EQUAL.
 - MANHOLE SEAL SHALL BE INSTALLED ACCORDING TO MANUFACTURER SPECIFICATIONS.

CASTING - SEE NOTE 7 ON SHEET SP3.0

NOTE:
ALL PUBLIC CATCH BASINS AND INLETS SHALL HAVE A 1FT SUMP

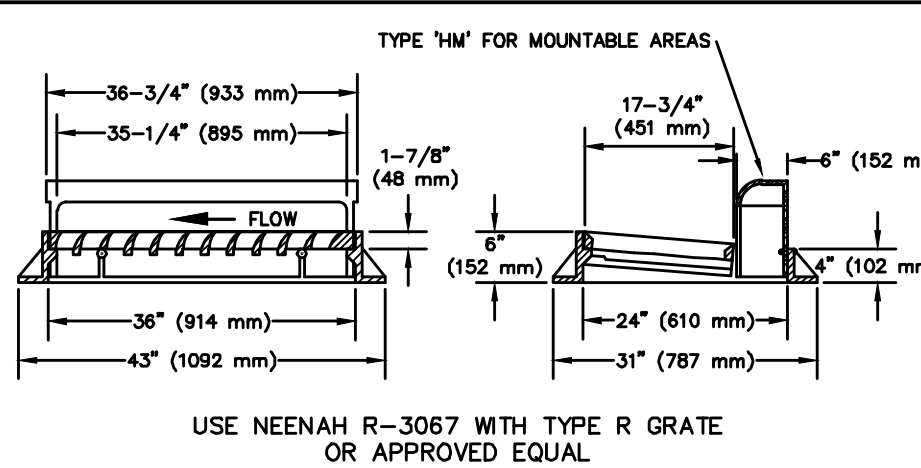


11 | PRECAST REINFORCE CONC. MANHOLE
SP5.0 | NOT TO SCALE



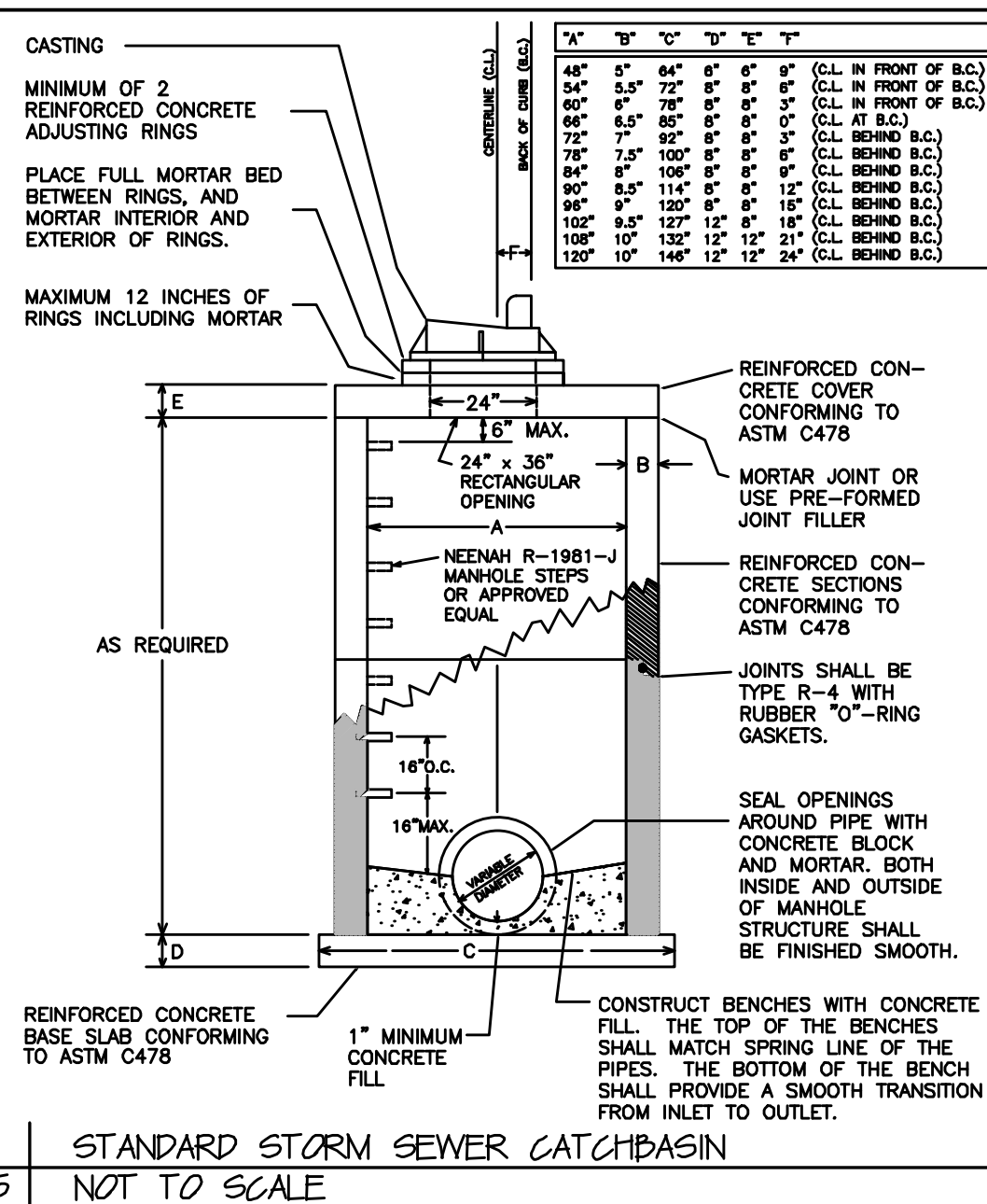
- NOTES:
- PLACE PEDESTRIAN CURB RAMPS AT ALL INTERSECTIONS.
 - PROVIDE EXPANSION JOINT MATERIAL AT MAX. 60 FOOT SPACING.
 - PROVIDE EXPANSION JOINT MATERIAL ALONG BOTH EDGES OF WALK, WHERE WALK IS CONTAINED BETWEEN FIXED OBJECTS.
 - PUBLIC SIDEWALK DESIGN IS LISTED ON SP1

3 | CONCRETE WALK/PAD DETAIL
SP5 | NOT TO SCALE

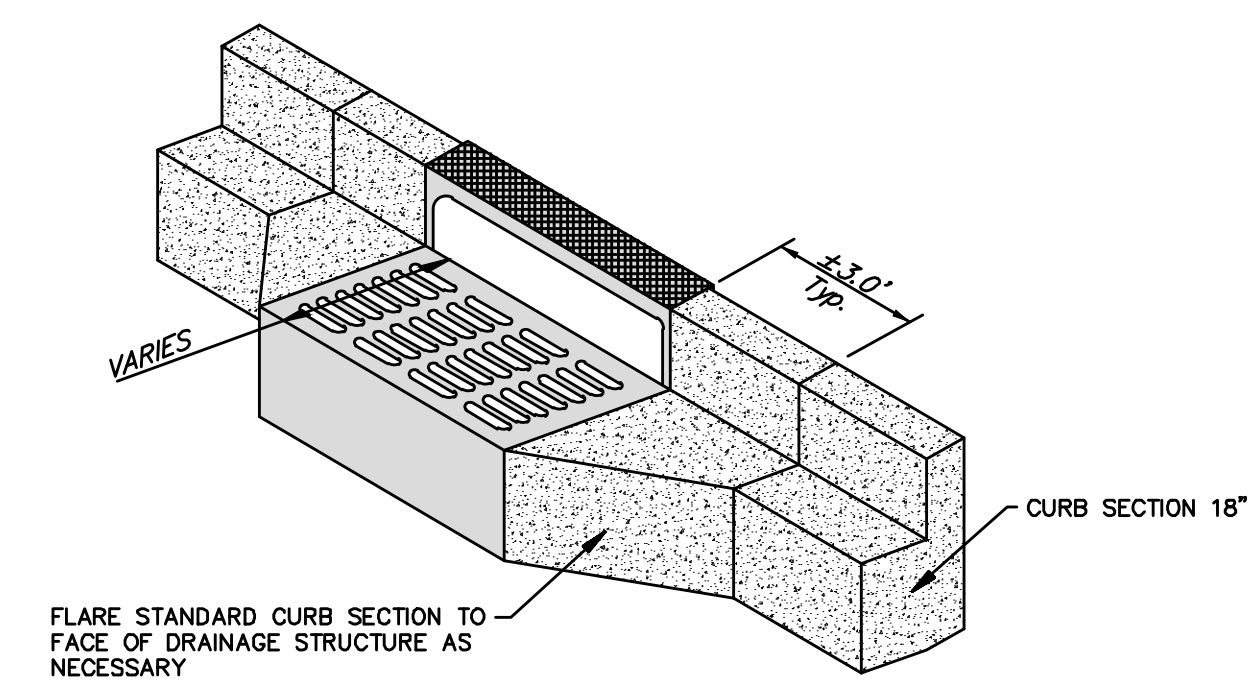


- ADJUSTING RINGS - SHALL BE PRECAST, 2" THICK, AND REINFORCED WITH 8 GAUGE STEEL WIRE. SET EACH RING IN A FULL BED OF MORTAR. TOTAL ADJUSTMENT HEIGHT SHALL BE BETWEEN 4" AND 12".
- 5" PRECAST REINFORCED CONCRETE
- 8" (203 mm)
- OPENINGS AS NEEDED
- CAST-IN-PLACE CONCRETE BASE OR 5" PRECAST BASE PLACED ON 3" CAST IN PLACE CONCRETE.

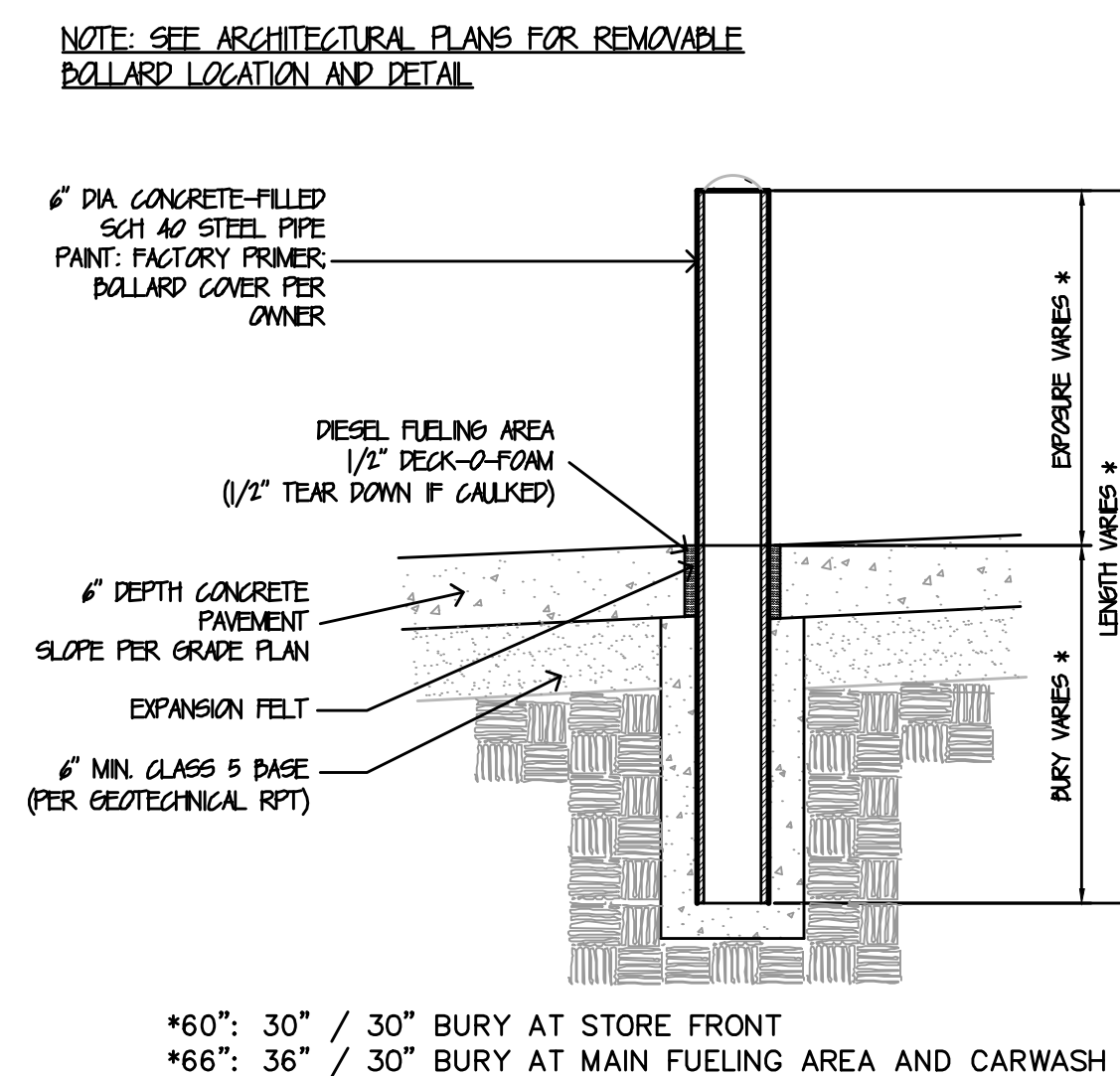
8 | 24"x 36" CURB INLET AND CASTING DETAIL
SP5 | NOT TO SCALE



12 | STANDARD STORM SEWER CATCHBASIN
SP5 | NOT TO SCALE



4 | CURB & DRAINAGE STRUCTURE INTERFACE
SP5 | NOT TO SCALE



9 | 6" PIPE BOLLARD
SP5.0 | SCALE - 3/8"=1'-0"

Kwik Trip

Kwik Star

KWIK TRIP, Inc.
P.O. BOX 2107
1626 OAK STREET
LA CROSSE, WI 54602-2107
PH. (608) 781-8988
FAX (608) 781-8960

raSmith
CREATIVITY BEYOND ENGINEERING
16745 W Bluemound Road
Brookfield, WI 53005-5938
(262) 781-1000
raSmith.com

PRELIMINARY PLANS FOR
MUNICIPAL REVIEW ONLY

CONVENIENCE STORE #1219
SITE DETAILS
LES PAUL PARKWAY
WAUKESHA, WI

#	DATE	DESCRIPTION

DRAWN BY: CBW
SCALE: GRAPHIC
PROJ. NO: 3210028
DATE: 10/20/2021
SHEET: SP5.0