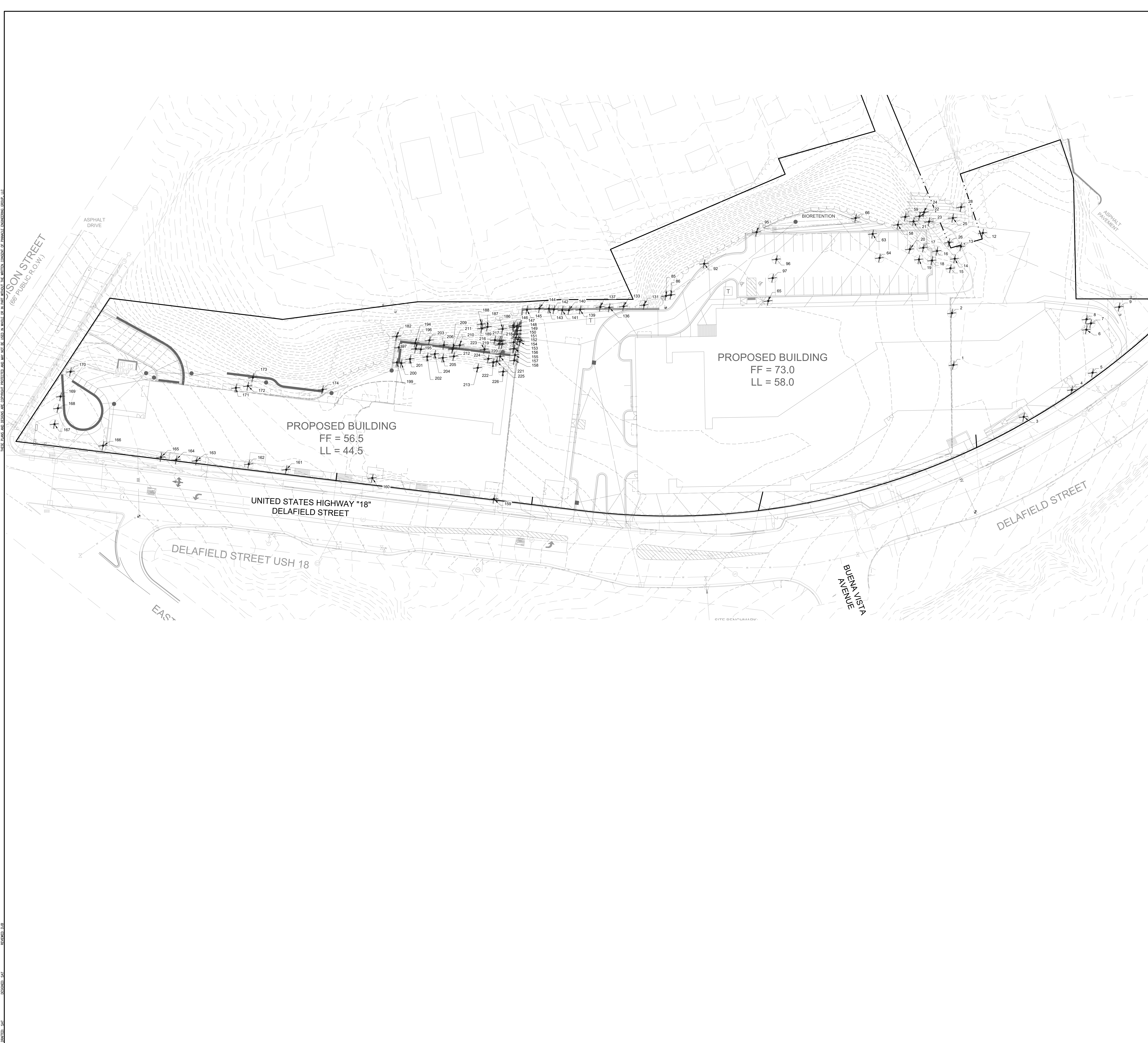
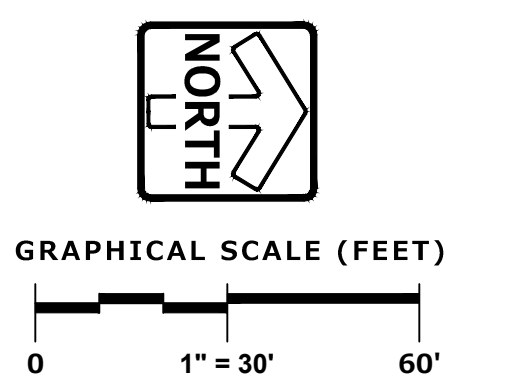


DATE PLOTTED: 06/20/2019 10:58:00 AM PROJECT: MANDEL DELAFIELD STREET DEVELOPMENT SHEET: TREE REMOVAL PLAN DRAWN BY: J. B. WILSON CHECKED BY: J. B. WILSON PLOTTED BY: J. B. WILSON



Tree Number	Tree Species	Inch Diameter	Tree Condition	Single/Multistem
1	Acer - Boxelder	6	Good	Multi-Stem
2	Morus Alba - Mulberry	8	Good	Multi-Stem
3	Gedisia Thacanthos - Honeylocust	23	Excellent	Single-Stem
4	Gedisia Thacanthos - Honeylocust	24	Excellent	Single-Stem
5	Gedisia Thacanthos - Honeylocust	24	Excellent	Single-Stem
6	Morus Alba - Mulberry	6	Good	Multi-Stem
7	Acer - Boxelder	5	Good	Multi-Stem
8	Morus Alba - Mulberry	12	Fair	Multi-Stem
9	Morus Alba - Mulberry	21	Good	Multi-Stem
12	Acer - Maple	68	Fair	Multi-Stem
13	Juglans - Black Walnut	25	Excellent	Single-Stem
14	Acer - Boxelder	28	Fair	Single-Stem
15	Ulmus - Elm	5	Good	Single-Stem
16	Tilia - Basswood / Linden	9	Excellent	Single-Stem
17	Juglans - Black Walnut	15	Excellent	Single-Stem
18	Juglans - Black Walnut	8	Good	Single-Stem
19	Fraxinus - Ash	9	Poor	Multi-Stem
20	Fraxinus - Ash	8	Poor	Multi-Stem
21	Juglans - Black Walnut	5	Excellent	Single-Stem
22	Acer - Boxelder	11	Good	Multi-Stem
23	Juglans - Black Walnut	11	Good	Single-Stem
24	Juglans - Black Walnut	22	Excellent	Single-Stem
25	Tilia - Basswood / Linden	22	Good	Multi-Stem
26	Morus Alba - Mulberry	15	Poor	Multi-Stem
28	Acer - Boxelder	13	Good	Single-Stem
58	Fraxinus - Ash	5	Poor	Single-Stem
59	Acer - Boxelder	14	Fair	Single-Stem
63	Populus - Poplar	5	Good	Single-Stem
64	Populus - Poplar	5	Good	Single-Stem
65	Salix - Willow	20	Excellent	Multi-Stem
66	Juglans - Black Walnut	10	Good	Single-Stem
65	Ulmus - Elm	6	Good	Single-Stem
86	Acer - Maple	5	Good	Single-Stem
92	Juglans - Black Walnut	9	Good	Single-Stem
95	Juglans - Black Walnut	9	Good	Single-Stem
96	Populus - Poplar	7	Good	Single-Stem
97	Salix - Willow	5	Good	Multi-Stem
131	Rubinia Pseudoacacia - Black Locust	16	Fair	Multi-Stem
133	Rubinia Pseudoacacia - Black Locust	9	Fair	Multi-Stem
136	Rubinia Pseudoacacia - Black Locust	8	Good	Multi-Stem
137	Rubinia Pseudoacacia - Black Locust	8	Good	Multi-Stem
139	Rubinia Pseudoacacia - Black Locust	9	Fair	Multi-Stem
140	Acer - Boxelder	8	Fair	Multi-Stem
141	Rubinia Pseudoacacia - Black Locust	6	Good	Multi-Stem
142	Rubinia Pseudoacacia - Black Locust	6	Good	Multi-Stem
143	Acer - Boxelder	6	Fair	Multi-Stem
144	Rubinia Pseudoacacia - Black Locust	7	Fair	Multi-Stem
145	Acer - Boxelder	7	Fair	Multi-Stem
146	Rubinia Pseudoacacia - Black Locust	8	Good	Single-Stem
147	Rubinia Pseudoacacia - Black Locust	8	Good	Single-Stem
148	Rubinia Pseudoacacia - Black Locust	11	Good	Multi-Stem
149	Rubinia Pseudoacacia - Black Locust	6	Good	Single-Stem
150	Rubinia Pseudoacacia - Black Locust	6	Good	Single-Stem
151	Acer - Boxelder	7	Fair	Multi-Stem
152	Rubinia Pseudoacacia - Black Locust	9	Good	Single-Stem
153	Juglans - Black Walnut	8	Good	Single-Stem
154	Acer - Boxelder	11	Fair	Multi-Stem
155	Acer - Boxelder	5	Fair	Single-Stem
156	Juglans - Black Walnut	20	Good	Multi-Stem
157	Acer - Boxelder	14	Fair	Multi-Stem
158	Acer - Boxelder	6	Poor	Single-Stem
159	Tilia - Basswood / Linden	36	Excellent	Single-Stem
160	Ulmus - Elm	9	Excellent	Single-Stem
161	Tilia - Basswood / Linden	7	Good	Single-Stem
162	Tilia - Basswood / Linden	8	Good	Single-Stem
163	Tilia - Basswood / Linden	11	Good	Single-Stem
164	Tilia - Basswood / Linden	8	Poor	Single-Stem
165	Tilia - Basswood / Linden	12	Good	Single-Stem
166	Tilia - Basswood / Linden	14	Poor	Single-Stem
167	Tilia - Basswood / Linden	31	Good	Single-Stem
168	Picea - Spruce	9	Poor	Single-Stem
169	Picea - Spruce	9	Poor	Single-Stem
170	Tilia - Basswood / Linden	22	Fair	Single-Stem
171	Morus Alba - Mulberry	5	Fair	Multi-Stem
172	Juglans - Black Walnut	12	Good	Multi-Stem
173	Morus Alba - Mulberry	30	Good	Multi-Stem
174	Juglans - Black Walnut	19	Good	Multi-Stem
182	Rubinia Pseudoacacia - Black Locust	14	Good	Multi-Stem
186	Juglans - Black Walnut	7	Good	Single-Stem
187	Acer - Boxelder	6	Good	Single-Stem
188	Acer - Boxelder	5	Good	Single-Stem
189	Juglans - Black Walnut	7	Good	Single-Stem
* 194	Acer - Boxelder	4	Poor	Multi-Stem
195	Acer - Boxelder	11	Fair	Multi-Stem
196	Acer - Boxelder	13	Good	Single-Stem
197	Rubinia Pseudoacacia - Black Locust	5	Good	Single-Stem
199	Rubinia Pseudoacacia - Black Locust	6	Good	Single-Stem
200	Juglans - Black Walnut	14	Good	Single-Stem
201	Acer - Boxelder	5	Fair	Multi-Stem
202	Juglans - Black Walnut	5	Good	Single-Stem
203	Acer - Boxelder	6	Fair	Multi-Stem
204	Juglans - Black Walnut	17	Good	Multi-Stem
205	Juglans - Black Walnut	11	Good	Single-Stem
206	Acer - Boxelder	9	Good	Multi-Stem
209	Juglans - Black Walnut	11	Good	Single-Stem
210	Juglans - Black Walnut	8	Good	Single-Stem
211	Acer - Boxelder	8	Fair	Single-Stem
212	Juglans - Black Walnut	12	Good	Single-Stem
213	Acer - Boxelder	17	Fair	Multi-Stem
216	Juglans - Black Walnut	11	Good	Single-Stem
217	Juglans - Black Walnut	5	Good	Single-Stem
218	Juglans - Black Walnut	8	Good	Single-Stem
219	Juglans - Black Walnut	6	Good	Single-Stem
220	Juglans - Black Walnut	5	Good	Single-Stem
221	Juglans - Black Walnut	14	Good	Single-Stem
222	Acer - Boxelder	5	Poor	Single-Stem
223	Acer - Boxelder	6	Fair	Single-Stem
224	Juglans - Black Walnut	10	Good	Single-Stem
225	Juglans - Black Walnut	17	Good	Multi-Stem
226	Acer - Boxelder	6	Fair	Multi-Stem

(*) DENOTES TREES SMALLER THAN 5" CALIPER



PINNACLE ENGINEERING GROUP
 ENGINEERING | NATURAL RESOURCES | SURVEYING
 WISCONSIN OFFICE:
 20725 WATERTOWN ROAD, SUITE 100
 BROOKFIELD, WI 53186
 (262) 774-6888
 CHICAGO | MILWAUKEE | NATIONWIDE

**MANDEL DELAFIELD STREET
 DEVELOPMENT
 WAUKESHA, WI**

TREE REMOVAL PLAN

REVISIONS		DATE	BY	SCALE	SHEET
					TR-1
					TR-1

FINAL SITE PLAN & ARCHITECTURAL REVIEW

TREE REMOVAL PLAN

www.pinnacle-engr.com