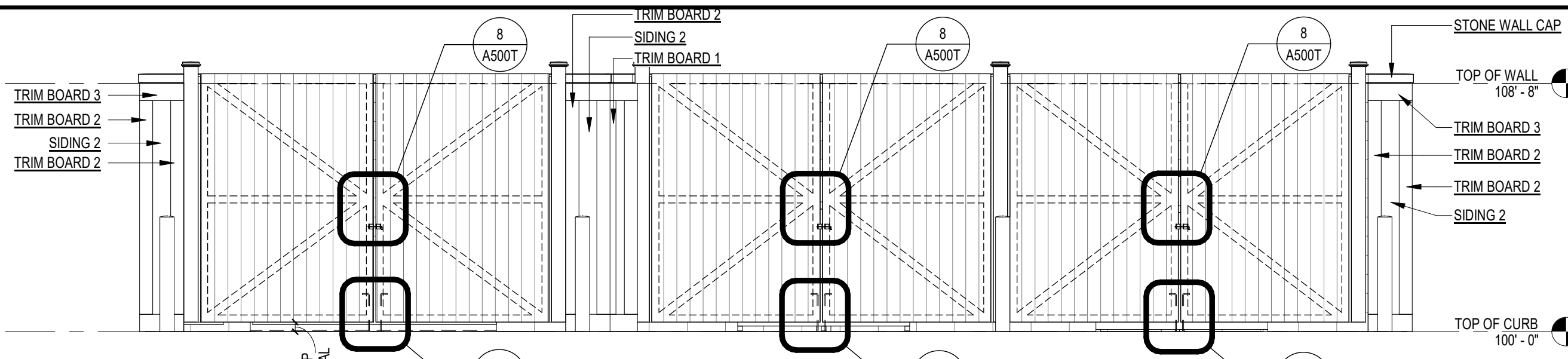
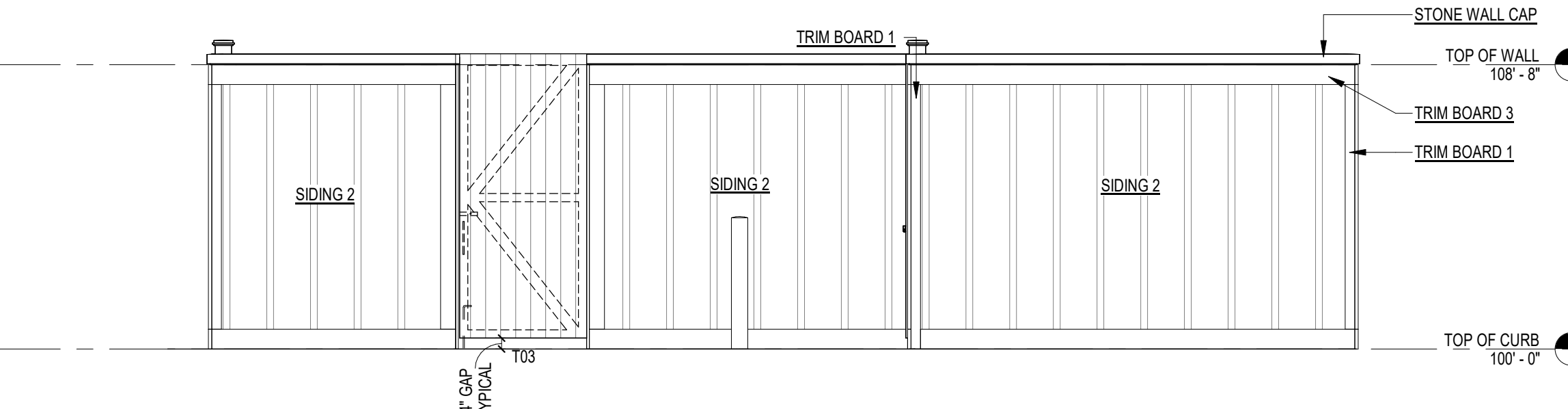


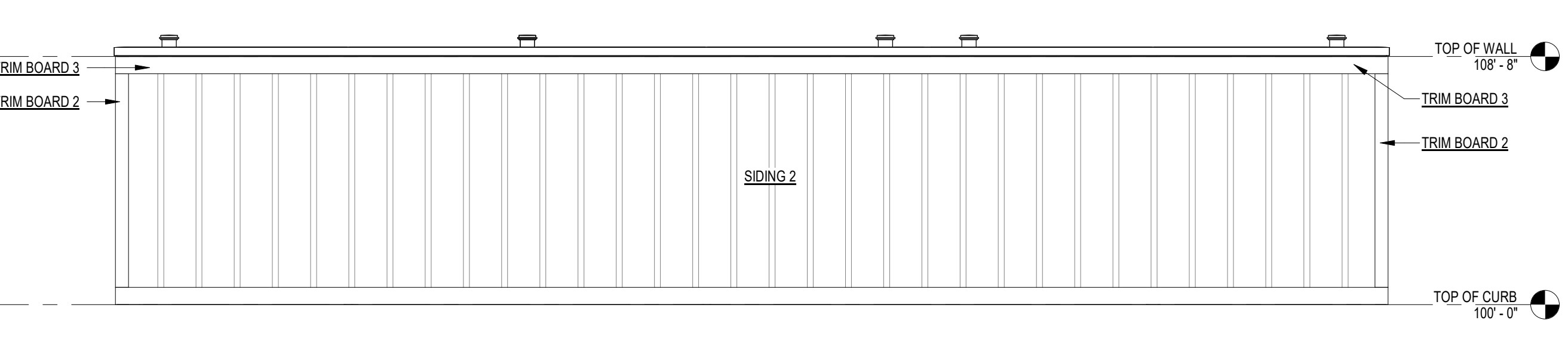
6 LEFT ELEVATION - TRASH ENCLOSURE B
1/4" = 1'-0"



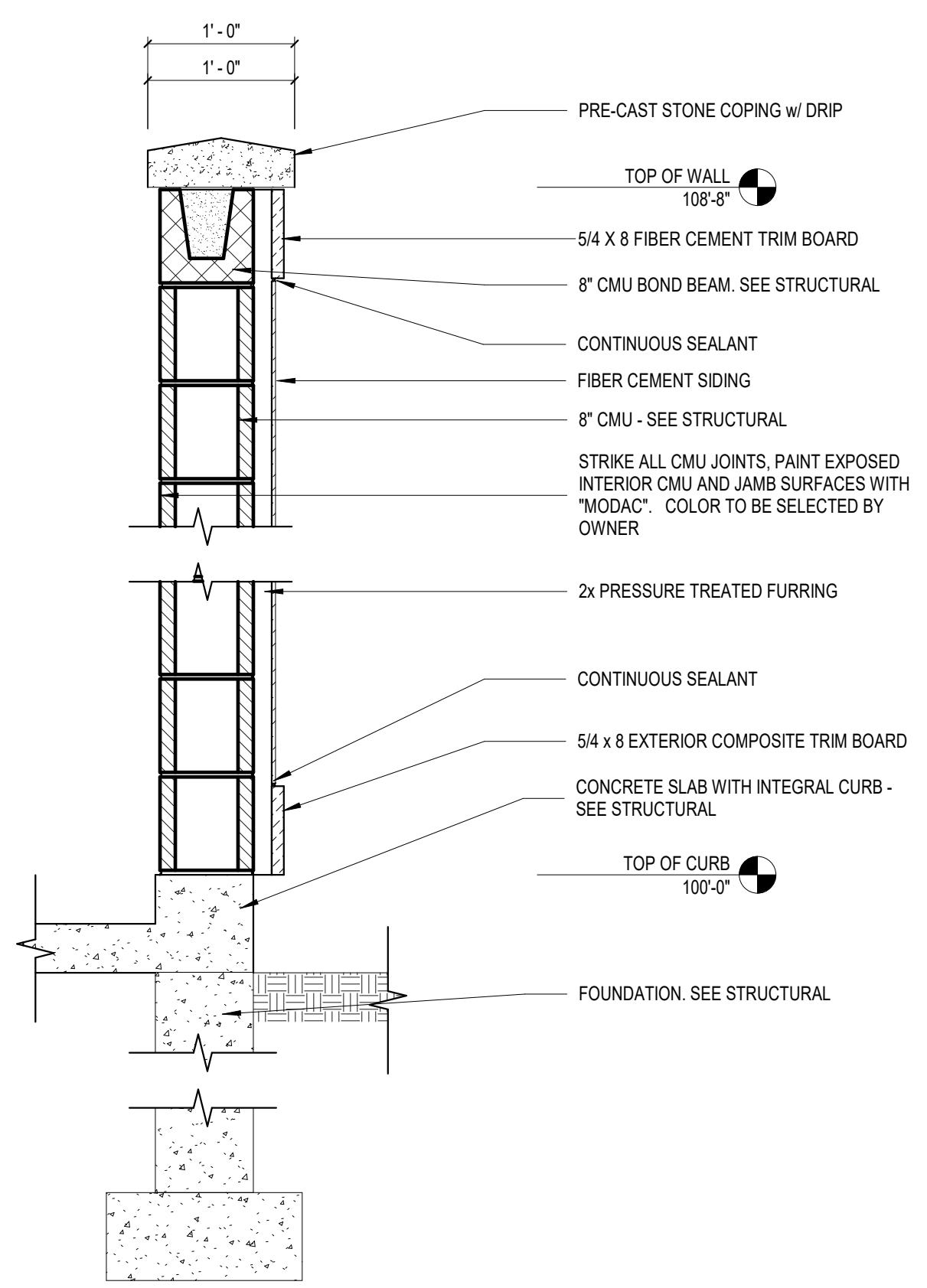
3 FRONT ELEVATION - TRASH ENCLOSURE B
1/4" = 1'-0"



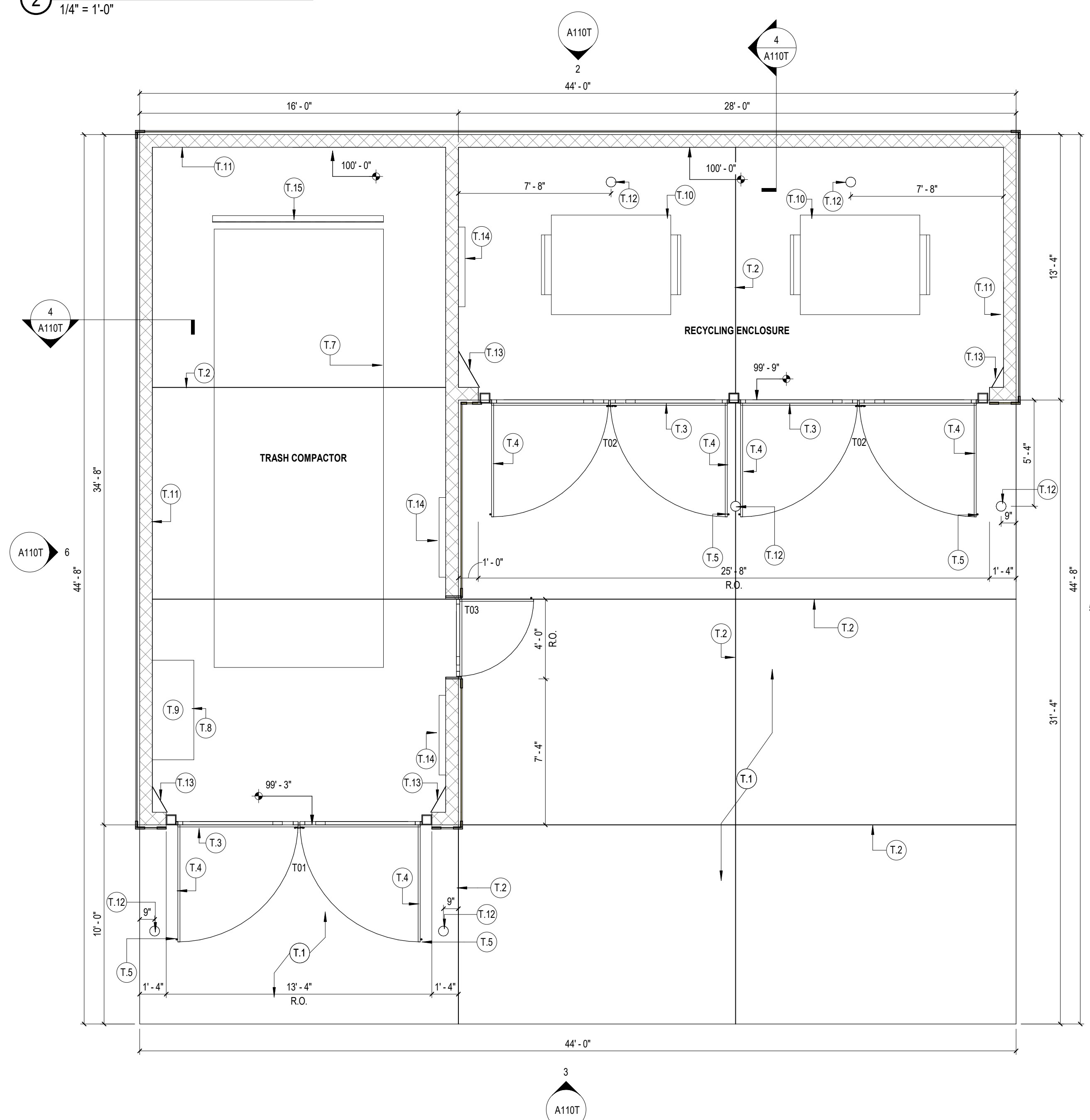
5 RIGHT ELEVATION - TRASH ENCLOSURE B
1/4" = 1'-0"



2 REAR ELEVATION - TRASH ENCLOSURE B
1/4" = 1'-0"



4 WALL SECTION - TRASH - CMU - SIDING
1" = 1'-0"



1 FLOOR PLAN - TRASH ENCLOSURE B
1/4" = 1'-0"

GENERAL NOTES

- COORDINATE TRASH COMPACTOR EQUIPMENT INSTALLATION AND ELECTRICAL CONNECTIONS WITH OWNER AND VENDOR.
- CONTRACTOR TO PROVIDE ELECTRICAL STUB OUT FOR COMPACTOR CONTROLS ASSEMBLY. PROVIDE CONDUIT FROM ADJACENT GARAGE OR APARTMENT BUILDING. DOOR LOCATION TO BE ADJUSTED PER MFRS. SPECIFICATIONS. ALIGN WALL ENCLOSURE DOOR WITH COMPACTOR DOOR.
- SAW CUT CONTROL JOINTS IN CONCRETE APRON AND CONCRETE SLAB WITH 24 HOURS. COORDINATE SPACING IN FIELD.
- PROVIDE STEEL DRAIN GRATE OVER TRENCH DRAIN. VERIFY WITH CIVIL.

KEYED NOTES

- | | |
|------|--|
| T.1 | 6" THICK CONCRETE APRON. PROVIDE 10'-0" MIN APRON - REFER TO CIVIL DRAWINGS FOR FINAL SIZE AND GEOMETRY |
| T.2 | PROVIDE CONTROL JOINT AT LOCATION INDICATED |
| T.3 | 1/2" EXPANSION JOINT FILLER, TYP. |
| T.4 | GATE TO OPEN 110 DEGREES |
| T.5 | CANE BOLT SLEEVE LOCATIONS. OFFSET CANE BOLTS SO THAT ONE CANE BOLT IS OUTSIDE AND ONE INSIDE OF GATE LEAF. |
| T.7 | TRASH COMPACTOR - PROVIDE 2'-0" MINIMUM CLEARANCES AROUND COMPACTOR. COORDINATE ENCLOSURE SIZE WITH COMPACTOR DIMENSIONS - OWNER TO PROVIDE COMPACTOR VENDOR EQUIPMENT SELECTION |
| T.8 | COORDINATE LOCATION OF CONTROL ASSEMBLY WITH COMPACTOR MANUFACTURER |
| T.9 | CONTRACTOR SHALL PROVIDE ELECTRICAL STUB-OUT FOR COMPACTOR CONTROLS ASSEMBLY. OWNER TO PROVIDE ELECTRICAL SYSTEM FOR COMPACTOR FROM SELECTED VENDOR. PROVIDE CONDUIT FROM ADJACENT ELECTRICAL HOUSE PANEL, GARAGE, CLUBHOUSE OR APARTMENT BUILDING. REFER TO ELECTRICAL. |
| T.10 | DUMPSTER AS SELECTED BY OWNER. VERIFY & COORDINATE DUMPSTER SIZES WITH ENCLOSURE. |
| T.11 | PAINT INTERIOR WALLS OF TRASH COMPACTOR ENCLOSURE AND RECYCLING ENCLOSURE TO MATCH EXTERIOR SIDING |
| T.12 | 6" CONCRETE FILLED STEEL PIPE BOLLARD. BOLLARD TO BE LOCATED TO PROTECT GATE IN OPEN POSITION - TYPICAL. COORDINATE FINAL BOLLARD LOCATIONS SO THAT BOLLARDS DO NOT INTERFERE WITH DRIVE/FIRE LANE CLEARANCES |
| T.13 | CRICKET SLOPE 1/8" PER FOOT |
| T.14 | WALL MOUNTED LIGHT FIXTURE - SEE ELECTRICAL DRAWINGS |
| T.15 | INSTALL STEEL ANGLE STOP (PAINTED) - ANCHOR TO SLAB. COORDINATE LOCATION WITH TRASH COMPACTOR VENDOR. |

MATERIALS & COMPONENTS

COMPOSITE TRIM 1	5/4x8 BORAL TRU-EXTERIOR WOODGRAIN TRIM BOARD. FINISH AND COLOR TO MATCH FIBER CEMENT TRIM. PROVIDE AT ALL SIDING LOCATIONS. INSTALL PER MANUFACTURER RECOMMENDATIONS.
SIDING 2	JAMES HARDIE - HARDIE PANEL FIBER CEMENT VERTICAL SIDING w/ HARDIE TRIM 1x3 BATTEN BOARDS AT 16" O.C. VERTICAL. INSTALL PER MANUFACTURER RECOMMENDATIONS. COLOR - REFER TO COLOR SCHEMES & EXTERIOR FINISH COLORS
STONE WALL CAP	PRE-CAST STONE CAP. 12" WIDE CAP w/ 1" OVERHANG & DRIPS. CAP SECTIONS TO NOT EXCEED 4'-0" - COLOR AS SPECIFIED BY OWNER OR NATURAL
TRIM BOARD 1	5/4 X 4 FIBER CEMENT TRIM BOARD
TRIM BOARD 2	5/4 X 6 FIBER CEMENT TRIM BOARD
TRIM BOARD 3	5/4 X 8 FIBER CEMENT TRIM BOARD

EXTERIOR FINISH COLORS

ALUMINUM GATE/FENCE	
MORTAR	
SIDING 1	
SIDING 2	
SIDING 3	
STONE SILL/CAP	
TRIM	

NOT FOR CONSTRUCTION

Revisions
06/15/2019 ADDENDUM 02

2018 PROTOTYPE

Drawing Date
09/27/2019

SPRINGS PROTOTYPE

Project No.
218006.04

Sheet Title
TRASH ENCLOSURE PLANS & ELEVATIONS

Sheet No.
A110T